



## DRILL STEM TEST REPORT

Prepared For: **Murfin Drilling Co.**

250 N. Water Ste300  
Wichita KS 67206

ATTN: Brad Rine

**Dwyer-Simoneau #1-27**

**27-5s-26w Decatur,KS**

Start Date: 2013.06.14 @ 19:00:00

End Date: 2013.06.15 @ 02:59:45

Job Ticket #: 50684                      DST #: 1

Trilobite Testing, Inc

PO Box 362 Hays, KS 67601

ph: 785-625-4778 fax: 785-625-5620

Printed: 2013.06.18 @ 11:10:59

Murfin Drilling Co.

27-5s-26w Decatur,KS

Dwyer-Simoneau #1-27

DST # 1

LKC A-D

2013.06.14



**TRILOBITE  
TESTING, INC.**

# DRILL STEM TEST REPORT

Murfin Drilling Co.  
250 N. Water Ste300  
Wichita KS 67206  
ATTN: Brad Rine

**27-5s-26w Decatur, KS**  
**Dwyer-Simoneau #1-27**  
Job Ticket: 50684      **DST#: 1**  
Test Start: 2013.06.14 @ 19:00:00

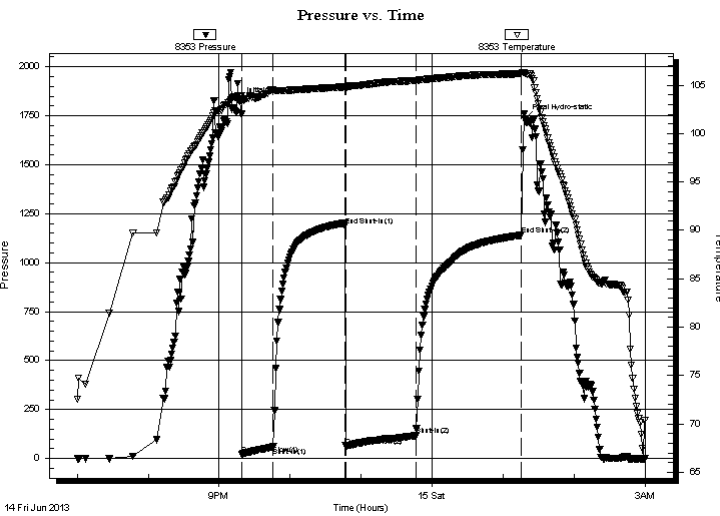
## GENERAL INFORMATION:

Formation: **LKC A-D**  
Deviated: No Whipstock: ft (KB)  
Time Tool Opened: 21:19:15  
Time Test Ended: 02:59:45  
Interval: **3621.00 ft (KB) To 3687.00 ft (KB) (TVD)**  
Total Depth: 3687.00 ft (KB) (TVD)  
Hole Diameter: 7.88 inches Hole Condition: Fair  
Test Type: Conventional Bottom Hole (Initial)  
Tester: Wilbur Steinbeck  
Unit No: 68  
Reference Elevations: 2557.00 ft (KB)  
2546.00 ft (CF)  
KB to GR/CF: 11.00 ft

## Serial #: 8353      Outside

Press @ Run Depth: 116.53 psig @ 3622.00 ft (KB)      Capacity: 8000.00 psig  
Start Date: 2013.06.14      End Date: 2013.06.15      Last Calib.: 2013.06.15  
Start Time: 19:00:15      End Time: 02:59:45      Time On Btm: 2013.06.14 @ 21:17:00  
Time Off Btm: 2013.06.15 @ 01:18:30

TEST COMMENT: 30 IF; Built to 2"  
60 ISI; No Blow  
60 FF; Built to 3"  
90 FSI; No Blow



## PRESSURE SUMMARY

Time (Min.)	Pressure (psig)	Temp (deg F)	Annotation
0	1823.91	103.87	Initial Hydro-static
3	22.69	103.54	Open To Flow (1)
29	58.67	104.51	Shut-In(1)
90	1189.27	104.82	End Shut-In(1)
90	63.59	104.73	Open To Flow (2)
150	116.53	105.48	Shut-In(2)
239	1140.65	106.18	End Shut-In(2)
242	1735.00	106.23	Final Hydro-static

## Recovery

Length (ft)	Description	Volume (bbl)
210.00	Mud	1.03

## Gas Rates

Choke (inches)	Pressure (psig)	Gas Rate (Mcf/d)





**TRILOBITE  
TESTING, INC.**

# DRILL STEM TEST REPORT

**TOOL DIAGRAM**

Murfin Drilling Co.

**27-5s-26w Decatur,KS**

250 N. Water Ste300  
Wichita KS 67206

**Dwyer-Simoneau #1-27**

Job Ticket: 50684

**DST#: 1**

ATTN: Brad Rine

Test Start: 2013.06.14 @ 19:00:00

## Tool Information

Drill Pipe:	Length: 3373.00 ft	Diameter: 3.80 inches	Volume: 47.31 bbl	Tool Weight: 2500.00 lb
Heavy Wt. Pipe:	Length: 0.00 ft	Diameter: 0.00 inches	Volume: 0.00 bbl	Weight set on Packer: 25000.00 lb
Drill Collar:	Length: 234.00 ft	Diameter: 2.25 inches	Volume: 1.15 bbl	Weight to Pull Loose: 70000.00 lb
			<u>Total Volume: 48.46 bbl</u>	Tool Chased 2.00 ft
Drill Pipe Above KB:	15.00 ft			String Weight: Initial 60000.00 lb
Depth to Top Packer:	3621.00 ft			Final 60000.00 lb
Depth to Bottom Packer:	ft			
Interval between Packers:	66.00 ft			
Tool Length:	95.00 ft			
Number of Packers:	2	Diameter: 6.75 inches		

Tool Comments:

## Tool Description

Tool Description	Length (ft)	Serial No.	Position	Depth (ft)	Accum. Lengths
Change Over Sub	1.00			3593.00	
Shut In Tool	5.00			3598.00	
Hydraulic tool	5.00			3603.00	
Jars	5.00			3608.00	
Safety Joint	3.00			3611.00	
Packer	5.00			3616.00	29.00 Bottom Of Top Packer
Packer	5.00			3621.00	
Shale	0.00			3621.00	
Stubb	1.00			3622.00	
Recorder	0.00	8360	Inside	3622.00	
Recorder	0.00	8353	Outside	3622.00	
Perforations	28.00			3650.00	
change Over Sub	1.00			3651.00	
blank spacing	32.00			3683.00	
change Over Sub	1.00			3684.00	
Bullnose	3.00			3687.00	66.00 Bottom Packers & Anchor
<b>Total Tool Length:</b>	<b>95.00</b>				



**TRILOBITE  
TESTING, INC.**

**DRILL STEM TEST REPORT**

**FLUID SUMMARY**

Murfin Drilling Co.

**27-5s-26w Decatur,KS**

250 N. Water Ste300  
Wichita KS 67206

**Dwyer-Simoneau #1-27**

Job Ticket: 50684

**DST#: 1**

ATTN: Brad Rine

Test Start: 2013.06.14 @ 19:00:00

**Mud and Cushion Information**

Mud Type: Gel Chem

Cushion Type:

Oil API:

deg API

Mud Weight: 9.00 lb/gal

Cushion Length:

ft

Water Salinity:

ppm

Viscosity: 65.00 sec/qt

Cushion Volume:

bbbl

Water Loss: 6.79 in<sup>3</sup>

Gas Cushion Type:

Resistivity: ohm.m

Gas Cushion Pressure:

psig

Salinity: 900.00 ppm

Filter Cake: inches

**Recovery Information**

Recovery Table

Length ft	Description	Volume bbl
210.00	Mud	1.033

Total Length: 210.00 ft      Total Volume: 1.033 bbl

Num Fluid Samples: 0

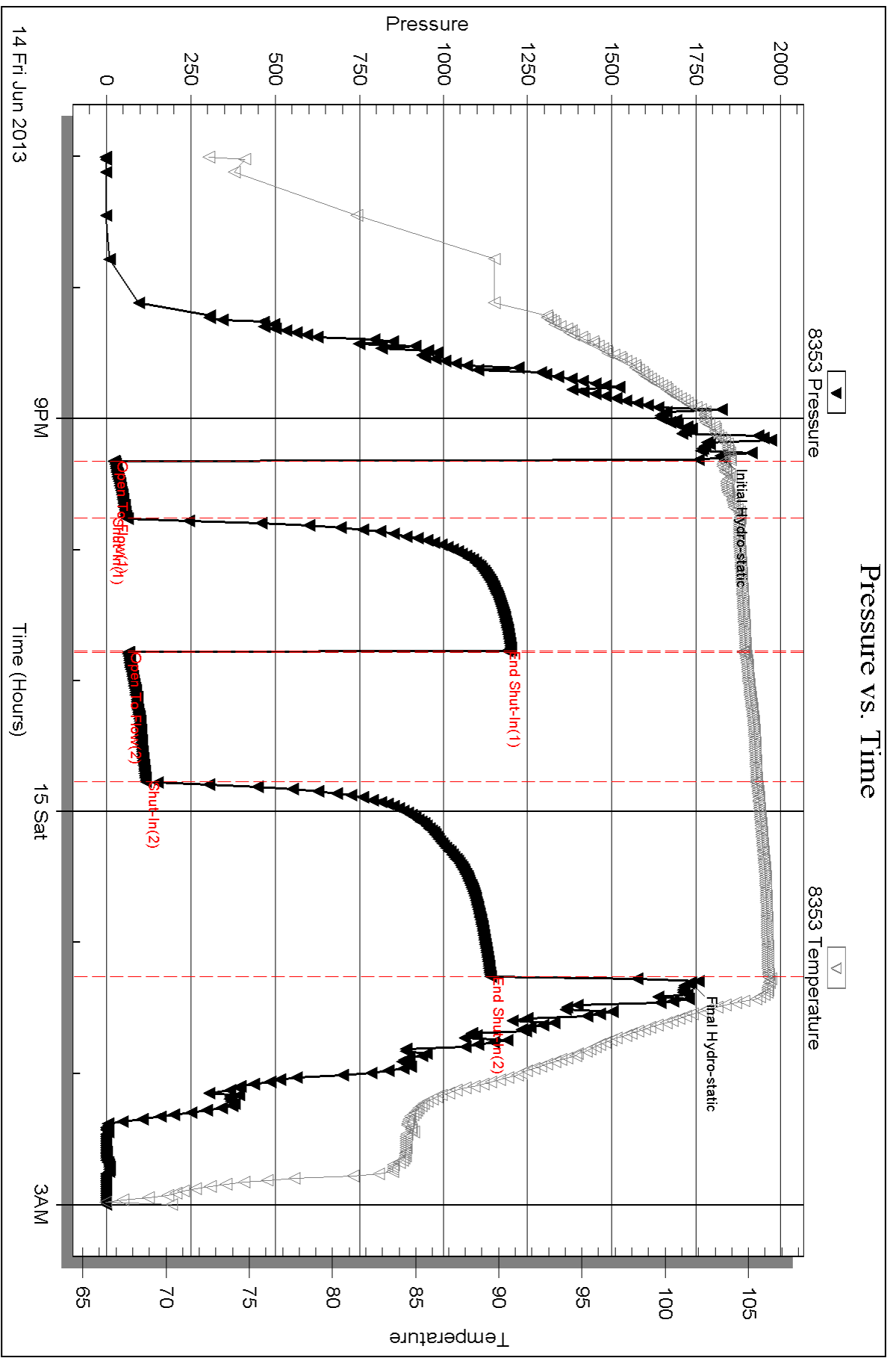
Num Gas Bombs: 0

Serial #:

Laboratory Name:

Laboratory Location:

Recovery Comments:



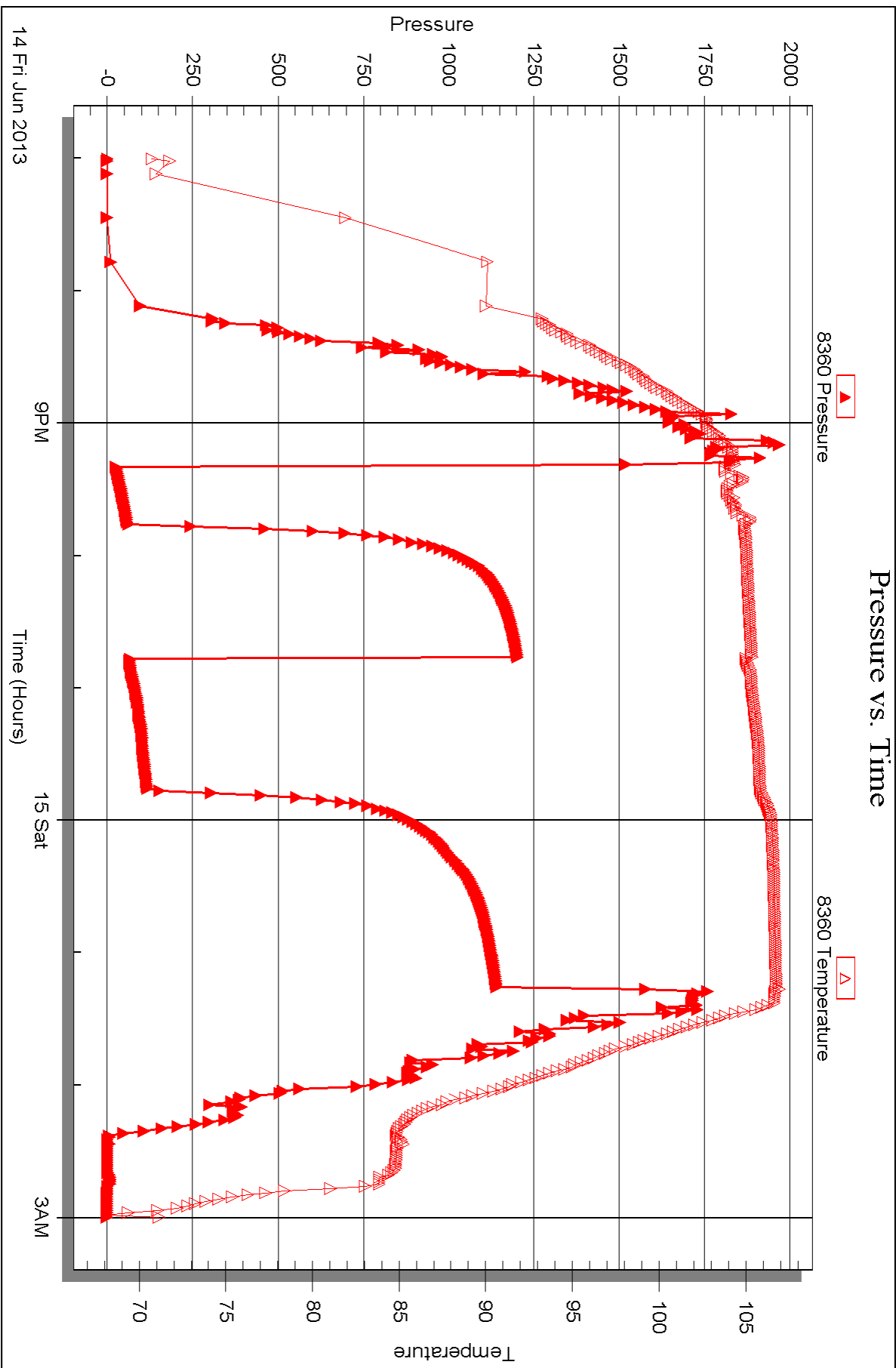
Serial #: 8360

Inside

Murfin Drilling Co.

Dwyer-Simoneau #1-27

DST Test Number: 1





## DRILL STEM TEST REPORT

Prepared For: **Murfin Drilling Co.**

250 N. Water Ste300  
Wichita KS 67206

ATTN: Brad Rine

**Dwyer-Simoneau #1-27**

**27-5s-26w Decatur,KS**

Start Date: 2013.06.15 @ 10:48:00

End Date: 2013.06.15 @ 18:20:30

Job Ticket #: 50685                      DST #: 2

Trilobite Testing, Inc

PO Box 362 Hays, KS 67601

ph: 785-625-4778 fax: 785-625-5620

Printed: 2013.06.18 @ 11:08:48





**TRILOBITE TESTING, INC.**

# DRILL STEM TEST REPORT

Murfin Drilling Co.  
 250 N. Water Ste300  
 Wichita KS 67206  
 ATTN: Brad Rine

**27-5s-26w Decatur, KS**  
**Dwyer-Simoneau #1-27**  
 Job Ticket: 50685 **DST#: 2**  
 Test Start: 2013.06.15 @ 10:48:00

## GENERAL INFORMATION:

Formation: **LKC F-G**  
 Deviated: No Whipstock: ft (KB)  
 Time Tool Opened: 12:53:45  
 Time Test Ended: 18:20:30  
 Interval: **3677.00 ft (KB) To 3718.00 ft (KB) (TVD)**  
 Total Depth: 3718.00 ft (KB) (TVD)  
 Hole Diameter: 7.88 inches Hole Condition: Fair  
 Test Type: Conventional Bottom Hole (Reset)  
 Tester: Wilbur Steinbeck  
 Unit No: 68  
 Reference Elevations: 2557.00 ft (KB)  
 2546.00 ft (CF)  
 KB to GR/CF: 11.00 ft

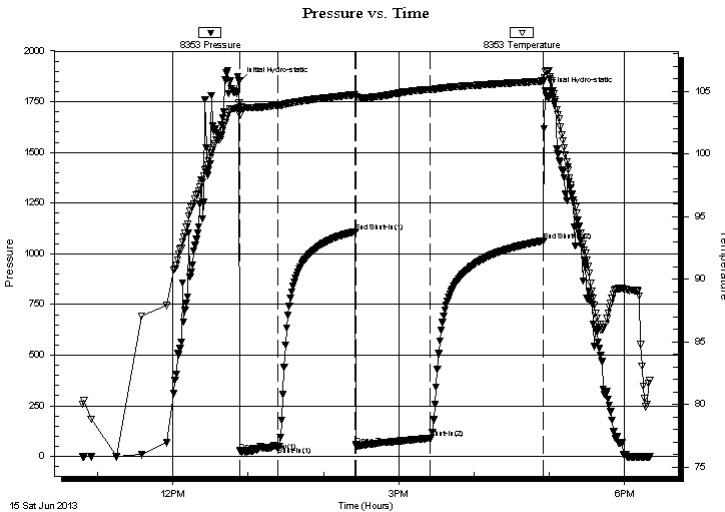
## Serial #: 8353

Outside

Press @ Run Depth: 90.55 psig @ 3678.00 ft (KB) Capacity: 8000.00 psig  
 Start Date: 2013.06.15 End Date: 2013.06.15 Last Calib.: 2013.06.15  
 Start Time: 10:48:15 End Time: 18:20:30 Time On Btm: 2013.06.15 @ 12:53:00  
 Time Off Btm: 2013.06.15 @ 16:56:45

TEST COMMENT: 30 IF; Built to 2 1/2"  
 60 ISF; No Blow  
 60 FF; Built to 2"  
 90 FSI; No Blow

## PRESSURE SUMMARY



Time (Min.)	Pressure (psig)	Temp (deg F)	Annotation
0	1850.85	104.07	Initial Hydro-static
1	27.35	103.09	Open To Flow (1)
31	48.38	103.88	Shut-In(1)
93	1109.45	104.74	End Shut-In(1)
93	54.79	104.59	Open To Flow (2)
153	90.55	105.14	Shut-In(2)
243	1064.51	105.81	End Shut-In(2)
244	1801.94	106.56	Final Hydro-static

## Recovery

Length (ft)	Description	Volume (bbl)
150.00	MCW 35%M 65%W	0.74

\* Recovery from multiple tests

## Gas Rates

Choke (inches)	Pressure (psig)	Gas Rate (Mcf/d)





**TRILOBITE  
TESTING, INC.**

# DRILL STEM TEST REPORT

**TOOL DIAGRAM**

Murfin Drilling Co.

**27-5s-26w Decatur, KS**

250 N. Water Ste300  
Wichita KS 67206

**Dwyer-Simoneau #1-27**

Job Ticket: 50685

**DST#: 2**

ATTN: Brad Rine

Test Start: 2013.06.15 @ 10:48:00

## Tool Information

Drill Pipe:	Length: 3434.00 ft	Diameter: 3.80 inches	Volume: 48.17 bbl	Tool Weight: 2500.00 lb
Heavy Wt. Pipe:	Length: 0.00 ft	Diameter: 0.00 inches	Volume: 0.00 bbl	Weight set on Packer: 25000.00 lb
Drill Collar:	Length: 234.00 ft	Diameter: 2.25 inches	Volume: 1.15 bbl	Weight to Pull Loose: lb
			<u>Total Volume: 49.32 bbl</u>	Tool Chased 1.00 ft
Drill Pipe Above KB:	20.00 ft			String Weight: Initial 60000.00 lb
Depth to Top Packer:	3677.00 ft			Final lb
Depth to Bottom Packer:	ft			
Interval between Packers:	41.00 ft			
Tool Length:	70.00 ft			
Number of Packers:	2	Diameter: 6.75 inches		

Tool Comments:

Tool Description	Length (ft)	Serial No.	Position	Depth (ft)	Accum. Lengths
------------------	-------------	------------	----------	------------	----------------

Change Over Sub	1.00			3649.00	
Shut In Tool	5.00			3654.00	
Hydraulic tool	5.00			3659.00	
Jars	5.00			3664.00	
Safety Joint	3.00			3667.00	
Packer	5.00			3672.00	29.00 Bottom Of Top Packer
Packer	5.00			3677.00	
Stubb	1.00			3678.00	
Recorder	0.00	8360	Inside	3678.00	
Recorder	0.00	8353	Outside	3678.00	
Perforations	37.00			3715.00	
Bullnose	3.00			3718.00	41.00 Bottom Packers & Anchor

**Total Tool Length: 70.00**



**TRILOBITE  
TESTING, INC.**

**DRILL STEM TEST REPORT**

**FLUID SUMMARY**

Murfin Drilling Co.

**27-5s-26w Decatur,KS**

250 N. Water Ste300  
Wichita KS 67206

**Dwyer-Simoneau #1-27**

Job Ticket: 50685

**DST#: 2**

ATTN: Brad Rine

Test Start: 2013.06.15 @ 10:48:00

**Mud and Cushion Information**

Mud Type: Gel Chem

Cushion Type:

Oil API:

deg API

Mud Weight: 9.00 lb/gal

Cushion Length:

ft

Water Salinity:

ppm

Viscosity: 70.00 sec/qt

Cushion Volume:

bbbl

Water Loss: 6.79 in<sup>3</sup>

Gas Cushion Type:

Resistivity: ohm.m

Gas Cushion Pressure:

psig

Salinity: 900.00 ppm

Filter Cake: inches

**Recovery Information**

Recovery Table

Length ft	Description	Volume bbl
150.00	MCW 35%M 65%W	0.738

Total Length: 150.00 ft      Total Volume: 0.738 bbl

Num Fluid Samples: 0

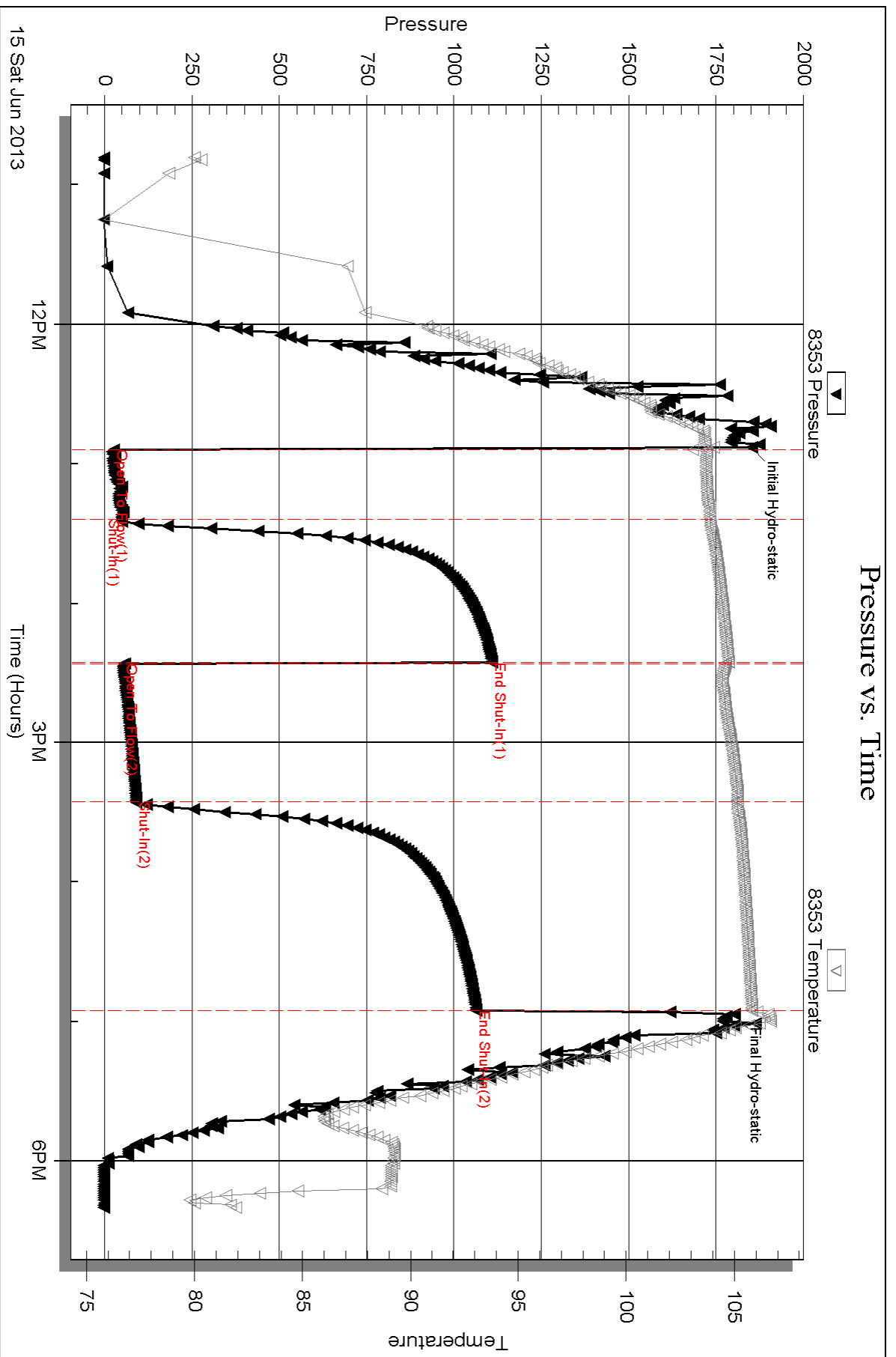
Num Gas Bombs: 0

Serial #:

Laboratory Name:

Laboratory Location:

Recovery Comments: RW .701@94.6=6000



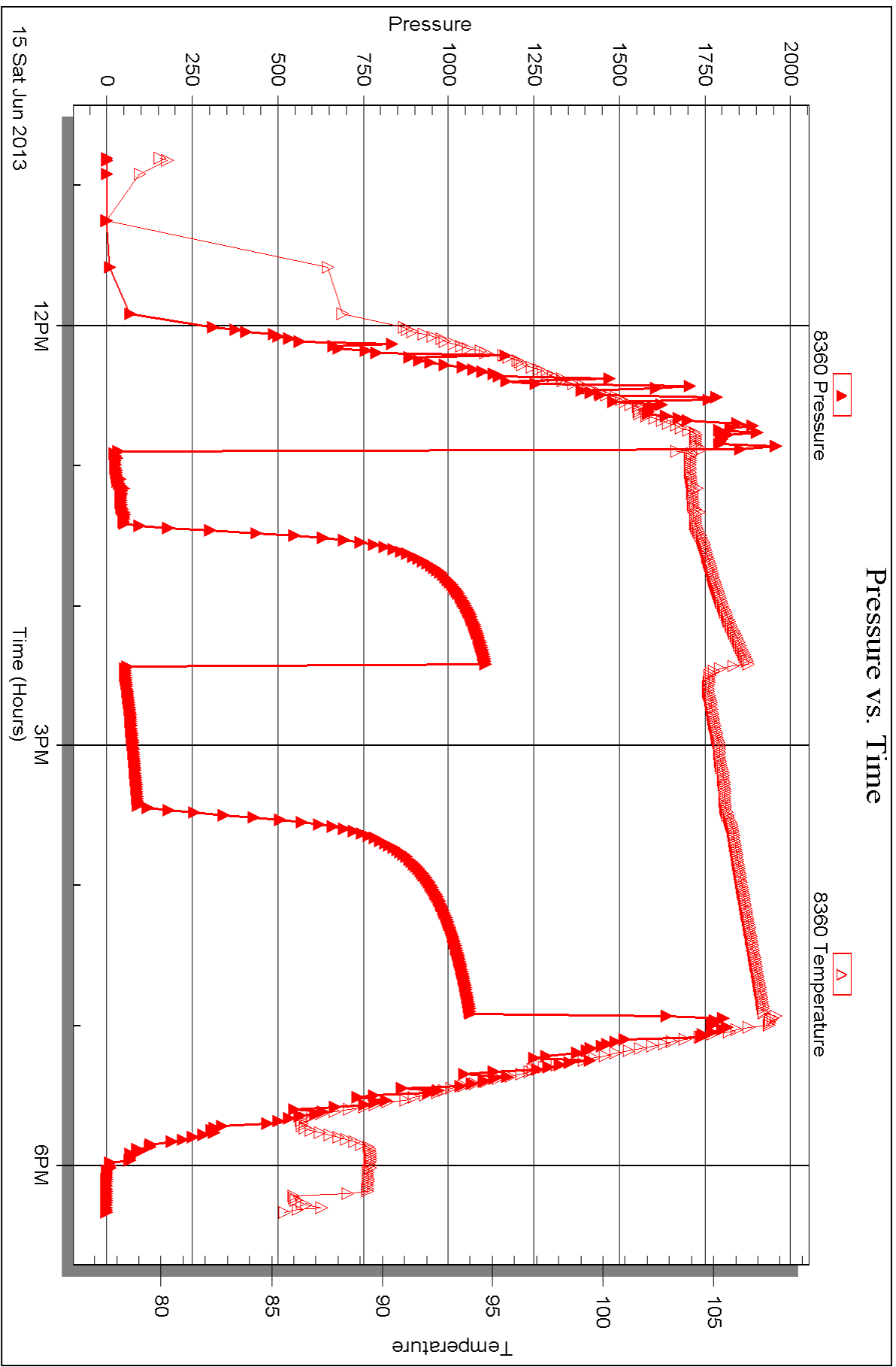
Serial #: 8360

Inside

Murfin Drilling Co.

Dwyer-Simonneau #1-27

DST Test Number: 2





## DRILL STEM TEST REPORT

Prepared For: **Murfin Drilling Co.**

250 N. Water Ste300  
Wichita KS 67206

ATTN: Brad Rine

**Dwyer-Simoneau #1-27**

**27-5s-26w Decatur,KS**

Start Date: 2013.06.16 @ 04:00:00

End Date: 2013.06.16 @ 10:54:30

Job Ticket #: 50686                      DST #: 3

Trilobite Testing, Inc  
PO Box 362 Hays, KS 67601  
ph: 785-625-4778 fax: 785-625-5620

Printed: 2013.06.18 @ 11:06:39



**TRILOBITE  
TESTING, INC.**

# DRILL STEM TEST REPORT

Murfin Drilling Co.  
250 N. Water Ste300  
Wichita KS 67206  
ATTN: Brad Rine

**27-5s-26w Decatur, KS**  
**Dwyer-Simoneau #1-27**  
Job Ticket: 50686 **DST#: 3**  
Test Start: 2013.06.16 @ 04:00:00

## GENERAL INFORMATION:

Formation: **LKC H-K**  
 Deviated: No Whipstock: ft (KB)  
 Time Tool Opened: 06:11:00  
 Time Test Ended: 10:54:30  
 Interval: **3725.00 ft (KB) To 3800.00 ft (KB) (TVD)**  
 Total Depth: 3800.00 ft (KB) (TVD)  
 Hole Diameter: 7.88 inches Hole Condition: Fair  
 Test Type: Conventional Bottom Hole (Reset)  
 Tester: Wilbur Steinbeck  
 Unit No: 68  
 Reference Elevations: 2557.00 ft (KB)  
 2546.00 ft (CF)  
 KB to GR/CF: 11.00 ft

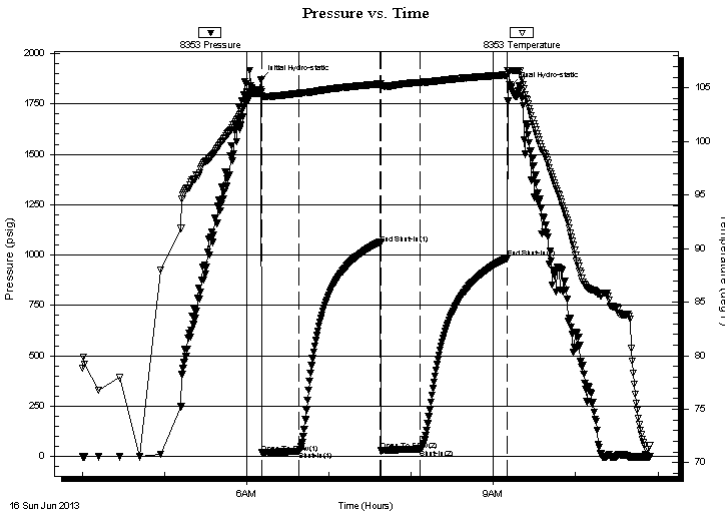
## Serial #: 8353

**Outside**

Press @ Run Depth: 37.83 psig @ 3726.00 ft (KB) Capacity: 8000.00 psig  
 Start Date: 2013.06.16 End Date: 2013.06.16 Last Calib.: 2013.06.16  
 Start Time: 04:00:15 End Time: 10:54:30 Time On Btm: 2013.06.16 @ 06:10:30  
 Time Off Btm: 2013.06.16 @ 09:12:30

TEST COMMENT: 30 IF; Built to 3/4"  
 60 ISI; No Blow  
 30 FF; No Blow  
 60 FSI; No Blow

## PRESSURE SUMMARY



Time (Min.)	Pressure (psig)	Temp (deg F)	Annotation
0	1869.16	104.64	Initial Hydro-static
1	17.43	104.27	Open To Flow (1)
28	26.03	104.49	Shut-In(1)
87	1057.74	105.37	End Shut-In(1)
88	28.89	105.22	Open To Flow (2)
116	37.83	105.53	Shut-In(2)
180	984.62	106.22	End Shut-In(2)
182	1834.83	106.64	Final Hydro-static

## Recovery

Length (ft)	Description	Volume (bbl)
5.00	Mud	0.02

\* Recovery from multiple tests

## Gas Rates

Choke (inches)	Pressure (psig)	Gas Rate (Mcf/d)







**TRILOBITE  
TESTING, INC.**

# DRILL STEM TEST REPORT

**TOOL DIAGRAM**

Murfin Drilling Co.

**27-5s-26w Decatur,KS**

250 N. Water Ste300  
Wichita KS 67206

**Dwyer-Simoneau #1-27**

Job Ticket: 50686

**DST#: 3**

ATTN: Brad Rine

Test Start: 2013.06.16 @ 04:00:00

## Tool Information

Drill Pipe:	Length: 3493.00 ft	Diameter: 3.80 inches	Volume: 49.00 bbl	Tool Weight: 2500.00 lb
Heavy Wt. Pipe:	Length: 0.00 ft	Diameter: 0.00 inches	Volume: 0.00 bbl	Weight set on Packer: 25000.00 lb
Drill Collar:	Length: 234.00 ft	Diameter: 2.25 inches	Volume: 1.15 bbl	Weight to Pull Loose: 75000.00 lb
			<u>Total Volume: 50.15 bbl</u>	Tool Chased 2.00 ft
Drill Pipe Above KB:	31.00 ft			String Weight: Initial 60000.00 lb
Depth to Top Packer:	3725.00 ft			Final 60000.00 lb
Depth to Bottom Packer:	ft			
Interval between Packers:	75.00 ft			
Tool Length:	104.00 ft			
Number of Packers:	2	Diameter: 6.75 inches		

Tool Comments:

## Tool Description

**Length (ft) Serial No. Position Depth (ft) Accum. Lengths**

Tool Description	Length (ft)	Serial No.	Position	Depth (ft)	Accum. Lengths
Change Over Sub	1.00			3697.00	
Shut In Tool	5.00			3702.00	
Hydraulic tool	5.00			3707.00	
Jars	5.00			3712.00	
Safety Joint	3.00			3715.00	
Packer	5.00			3720.00	29.00 Bottom Of Top Packer
Packer	5.00			3725.00	
Stubb	1.00			3726.00	
Recorder	0.00	8360	Inside	3726.00	
Recorder	0.00	8353	Outside	3726.00	
Perforations	37.00			3763.00	
change Over Sub	1.00			3764.00	
blank spacing	32.00			3796.00	
change Over Sub	1.00			3797.00	
Bullnose	3.00			3800.00	75.00 Bottom Packers & Anchor

**Total Tool Length: 104.00**



**TRILOBITE  
TESTING, INC.**

# DRILL STEM TEST REPORT

**FLUID SUMMARY**

Murfin Drilling Co.

**27-5s-26w Decatur,KS**

250 N. Water Ste300  
Wichita KS 67206

**Dwyer-Simoneau #1-27**

Job Ticket: 50686

**DST#: 3**

ATTN: Brad Rine

Test Start: 2013.06.16 @ 04:00:00

## Mud and Cushion Information

Mud Type: Gel Chem

Cushion Type:

Oil API:

deg API

Mud Weight: 9.00 lb/gal

Cushion Length:

ft

Water Salinity:

ppm

Viscosity: 75.00 sec/qt

Cushion Volume:

bbf

Water Loss: 6.39 in<sup>3</sup>

Gas Cushion Type:

Resistivity: ohm.m

Gas Cushion Pressure:

psig

Salinity: 1300.00 ppm

Filter Cake: inches

## Recovery Information

Recovery Table

Length ft	Description	Volume bbf
5.00	Mud	0.025

Total Length: 5.00 ft      Total Volume: 0.025 bbf

Num Fluid Samples: 0

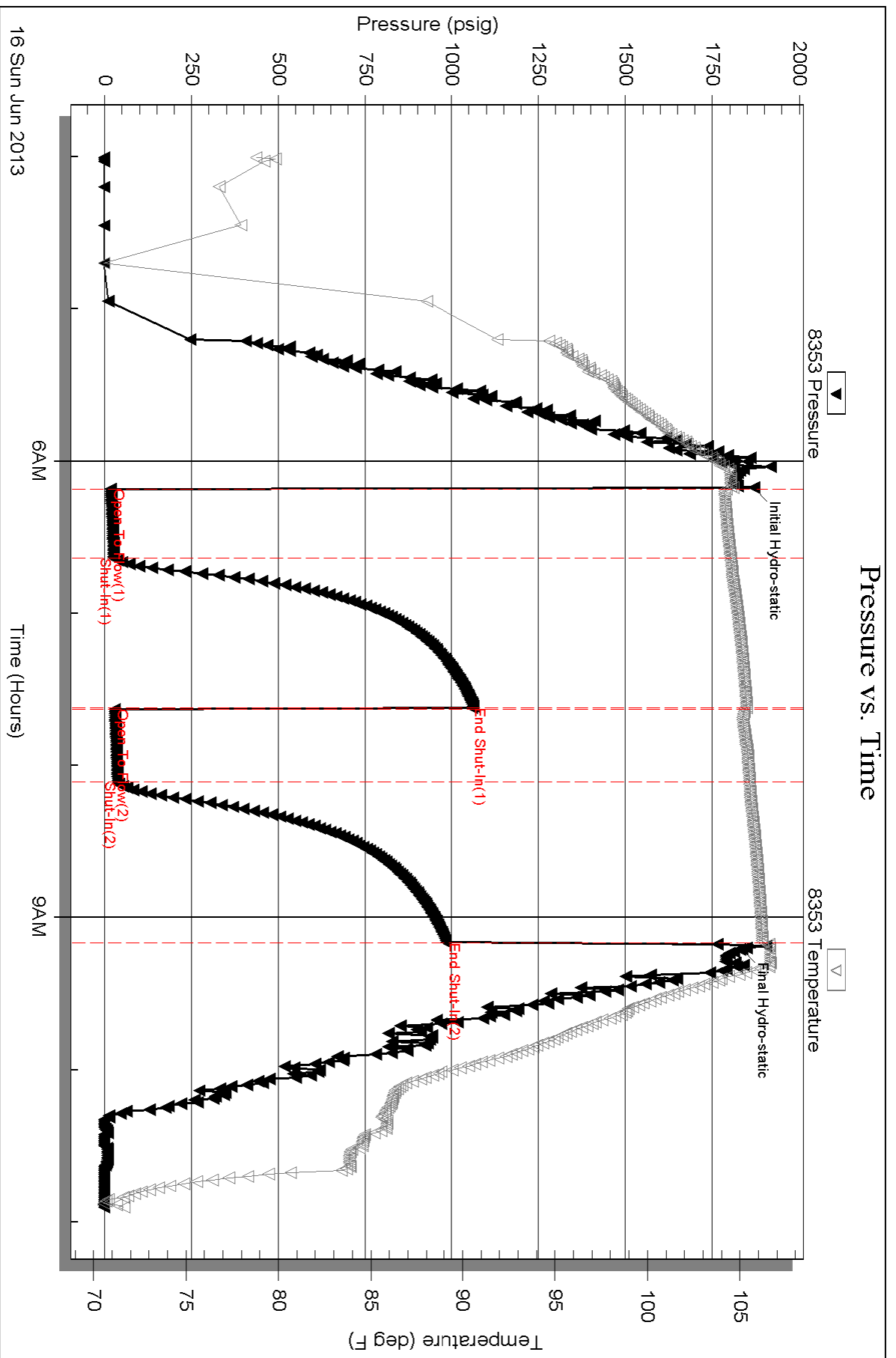
Num Gas Bombs: 0

Serial #:

Laboratory Name:

Laboratory Location:

Recovery Comments:



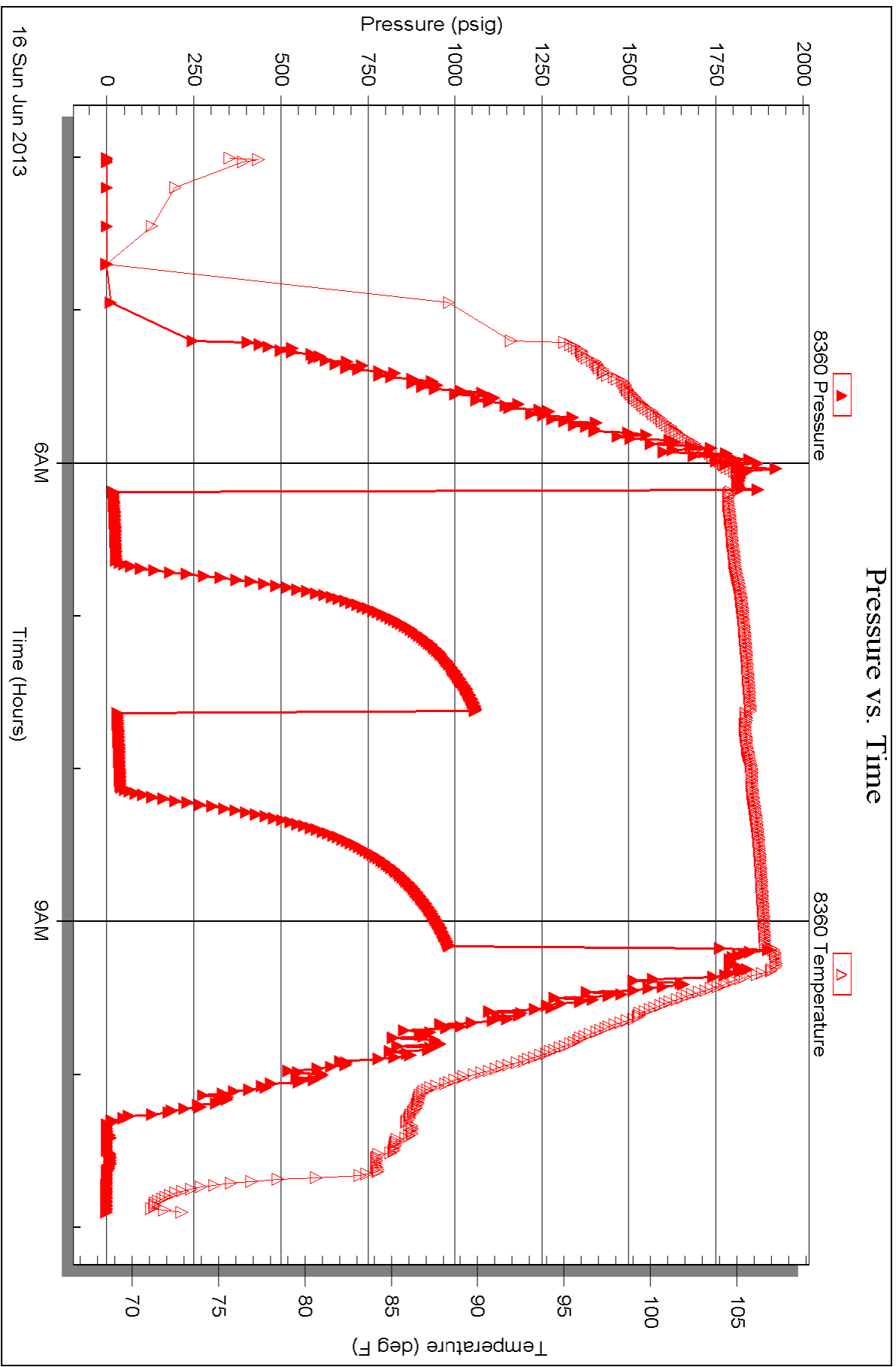
Serial #: 8360

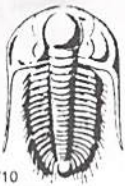
Inside

Murfin Drilling Co.

Dwyer-Simonneau #1-27

DST Test Number: 3





# TRILOBITE TESTING INC.

1515 Commerce Parkway • Hays, Kansas 67601

## Test Ticket

NO. 50684

Well Name & No. Dwyer-Simoncau # 1-27 Test No. 2 Date 6-14-13  
 Company Murfin Drilling Co Elevation 2557 KB 2546 GL  
 Address 250 N Water St 300 Wichita Ks 67206  
 Co. Rep / Geo. Brad Rine Rig Murfin 2  
 Location: Sec. 27 Twp. 5s Rge. 26w Co. Dreavor State Ks

Interval Tested 3621 3687 Zone Tested Lan A, B, D  
 Anchor Length 66' Drill Pipe Run 3373 Mud Wt. 9.2  
 Top Packer Depth 3616 Drill Collars Run 234 Vis 65  
 Bottom Packer Depth 3621 Wt. Pipe Run 0 WL \_\_\_\_\_  
 Total Depth 3687 Chlorides 900 ppm System LCM 5

Blow Description 1F; Built to 2"  
151; No blow  
FF; Built to 3 1/2"  
PSI; No blow

Rec	Feet of	%gas	%oil	%water	%mud
<u>210</u>	<u>Mud</u>			<u>100</u>	
Rec	Feet of	%gas	%oil	%water	%mud
Rec	Feet of	%gas	%oil	%water	%mud
Rec	Feet of	%gas	%oil	%water	%mud
Rec	Feet of	%gas	%oil	%water	%mud

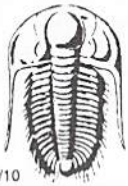
Rec Total 210 BHT 106° Gravity \_\_\_\_\_ API RW \_\_\_\_\_ @ \_\_\_\_\_ °F Chlorides \_\_\_\_\_ ppm

(A) Initial Hydrostatic 1,824  Test 1150 T-On Location 17:25  
 (B) First Initial Flow 23  Jars 250 T-Started 19:00  
 (C) First Final Flow 59  Safety Joint 75 T-Open 21:15  
 (D) Initial Shut-In 1,189  Circ Sub NA T-Pulled 1:15  
 (E) Second Initial Flow 64  Hourly Standby \_\_\_\_\_ T-Out 3:00  
 (F) Second Final Flow 117  Mileage 80 RT 124 Comments \_\_\_\_\_  
 (G) Final Shut-In 1,141  Sampler \_\_\_\_\_  
 (H) Final Hydrostatic 1,735  Straddle \_\_\_\_\_  Ruined Shale Packer \_\_\_\_\_

Initial Open 30  Shale Packer 250  Ruined Packer \_\_\_\_\_  
 Initial Shut-In 60  Extra Packer \_\_\_\_\_  Extra Copies \_\_\_\_\_  
 Final Flow 60  Extra Recorder \_\_\_\_\_ Sub Total 0  
 Final Shut-In 90  Day Standby \_\_\_\_\_ Total 1849  
 Accessibility \_\_\_\_\_ MP/DST Disc't \_\_\_\_\_  
 Sub Total 1849

Approved By \_\_\_\_\_ Our Representative [Signature]

Trilobite Testing Inc. shall not be liable for damaged of any kind of the property or personnel of the one for whom a test is made, or for any loss suffered or sustained, directly or indirectly, through the use of its equipment, or its statements or opinion concerning the results of any test, tools lost or damaged in the hole shall be paid for at cost by the party for whom the test is made.



# TRILOBITE TESTING INC.

1515 Commerce Parkway • Hays, Kansas 67601

## Test Ticket

NO. 50685

4/10

Well Name & No. Puyru - Simonsen #1-27 Test No. 2 Date 6-15-13  
 Company Murfin Drilling Co. Elevation 2557 KB 2546 GL  
 Address 250 N. Water Ste 300 Wichita Ks 67206  
 Co. Rep / Geo. Brad Rine Rig Murfin 2  
 Location: Sec. 27 Twp. S5 Rge. 26W Co. Decatur State Ks

Interval Tested 3677 3718 Zone Tested Lon F, G  
 Anchor Length 41 Drill Pipe Run 3434 Mud Wt. 8.9  
 Top Packer Depth 3672 Drill Collars Run 234 Vis 70  
 Bottom Packer Depth 3677 Wt. Pipe Run 0 WL 6.8  
 Total Depth 3718 Chlorides 900 ppm System LCM 6

Blow Description IF; Built to 2' 1/2"  
1st; No Blow  
FF; Built to 2"  
FSI; No Blow

Rec	Feet of	%gas	%oil	%water	%mud
<u>150</u>	<u>MCW</u>		<u>65</u>	<u>35</u>	
Rec	Feet of	%gas	%oil	%water	%mud
Rec	Feet of	%gas	%oil	%water	%mud
Rec	Feet of	%gas	%oil	%water	%mud
Rec	Feet of	%gas	%oil	%water	%mud

Rec Total 150 BHT 1070 Gravity \_\_\_\_\_ API RW .701 @ 94.6 °F Chlorides 6000 ppm

(A) Initial Hydrostatic 1,851  Test 1150 T-On Location 10:20  
 (B) First Initial Flow 27  Jars 250 T-Started 10:48  
 (C) First Final Flow 48  Safety Joint 75 T-Open 12:55  
 (D) Initial Shut-In 1,109  Circ Sub NA T-Pulled 18:55  
 (E) Second Initial Flow 55  Hourly Standby \_\_\_\_\_ T-Out 18:20  
 (F) Second Final Flow 91  Mileage 80 RT <sub>124</sub> Comments \_\_\_\_\_  
 (G) Final Shut-In 1,065  Sampler \_\_\_\_\_  
 (H) Final Hydrostatic 1,802  Straddle \_\_\_\_\_

Initial Open 30  Ruined Shale Packer \_\_\_\_\_  
 Initial Shut-In 60  Ruined Packer \_\_\_\_\_  
 Final Flow 60  Extra Packer \_\_\_\_\_  
 Final Shut-In 90  Extra Recorder \_\_\_\_\_  
 Sub Total 0  
 Total 1599  
 MP/DST Disc't \_\_\_\_\_

Approved By \_\_\_\_\_ Our Representative [Signature]

Trilobite Testing Inc. shall not be liable for damaged of any kind of the property or personnel of the one for whom a test is made, or for any loss suffered or sustained, directly or indirectly, through the use of its equipment, or its statements or opinion concerning the results of any test, tools lost or damaged in the hole shall be paid for at cost by the party for whom the test is made.





# TRILOBITE TESTING INC.

1515 Commerce Parkway • Hays, Kansas 67601

## Test Ticket

NO. 50686

4/10

Well Name & No. Pwyer - Simonau #1-27 Test No. 3 Date 6-16-13  
 Company Murfin Drilling Co. Elevation 2557 KB 2546 GL  
 Address 250 N Water Stc 300 Wichita Ks 67206  
 Co. Rep / Geo. Brad Rine Rig Murfin 2  
 Location: Sec. 27 Twp. S5 Rge. 26W Co. Decatur State Ks

Interval Tested 3725 3800 Zone Tested Lan H, I, J, K  
 Anchor Length 75 Drill Pipe Run 3493 Mud Wt. 9.2  
 Top Packer Depth 3720 Drill Collars Run 234 Vis 72  
 Bottom Packer Depth 3725 Wt. Pipe Run 0 WL 6.4  
 Total Depth 3800 Chlorides 1,300 ppm System LCM 5

Blow Description 1F; Built to 3/4"  
1st; No Blow  
2F; No Blow  
3rd; No Blow

Rec	Feet of	%gas	%oil	%water	%mud
<u>5</u>	<u>Mud</u>				
Rec	Feet of	%gas	%oil	%water	%mud
Rec	Feet of	%gas	%oil	%water	%mud
Rec	Feet of	%gas	%oil	%water	%mud
Rec	Feet of	%gas	%oil	%water	%mud

Rec Total 5 BHT 107° Gravity \_\_\_\_\_ API RW \_\_\_\_\_ @ \_\_\_\_\_ °F Chlorides \_\_\_\_\_ ppm

(A) Initial Hydrostatic <u>1,869</u>	<input checked="" type="checkbox"/> Test <u>1150</u>	T-On Location <u>3:40</u>
(B) First Initial Flow <u>17</u>	<input checked="" type="checkbox"/> Jars <u>250</u>	T-Started <u>4:00</u>
(C) First Final Flow <u>26</u>	<input checked="" type="checkbox"/> Safety Joint <u>75</u>	T-Open <u>6:10</u>
(D) Initial Shut-In <u>1,058</u>	<input checked="" type="checkbox"/> Circ Sub <u>N/A</u>	T-Pulled <u>9:10</u>
(E) Second Initial Flow <u>29</u>	<input type="checkbox"/> Hourly Standby _____	T-Out <u>10:55</u>
(F) Second Final Flow <u>38</u>	<input checked="" type="checkbox"/> Mileage <u>80 RT</u> <u>124</u>	Comments <u>Loaded Tools</u>
(G) Final Shut-In <u>985</u>	<input type="checkbox"/> Sampler _____	
(H) Final Hydrostatic <u>1,835</u>	<input type="checkbox"/> Straddle _____	<input type="checkbox"/> Ruined Shale Packer _____

Initial Open 30  
 Initial Shut-In 60  
 Final Flow 30  
 Final Shut-In 60

Shale Packer \_\_\_\_\_  
 Extra Packer \_\_\_\_\_  
 Extra Recorder \_\_\_\_\_  
 Day Standby \_\_\_\_\_  
 Accessibility \_\_\_\_\_  
 Sub Total 1599

Ruined Packer \_\_\_\_\_  
 Extra Copies \_\_\_\_\_  
 Sub Total 0  
 Total 1599  
 MP/DST Disc't \_\_\_\_\_

Approved By \_\_\_\_\_ Our Representative [Signature]

Trilobite Testing Inc. shall not be liable for damaged of any kind of the property or personnel of the one for whom a test is made, or for any loss suffered or sustained, directly or indirectly, through the use of its equipment, or its statements or opinion concerning the results of any test, tools lost or damaged in the hole shall be paid for at cost by the party for whom the test is made.