



**TRILOBITE  
TESTING, INC.**

# DRILL STEM TEST REPORT

Woolsey Operating Co  
125 N Market Ste 1000  
Wichita, KS 67202  
ATTN: Scott Alberg

**21-33S-10W Barber**  
**Stewart Trust B-2**  
Job Ticket: 50981      **DST#: 1**  
Test Start: 2013.06.12 @ 13:15:56

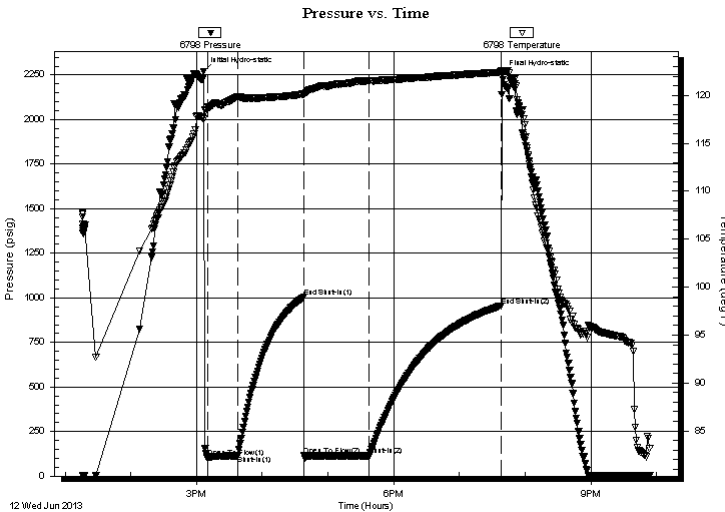
## GENERAL INFORMATION:

Formation: **Mississippi**  
Deviated: No Whipstock: ft (KB)  
Time Tool Opened: 15:09:56  
Time Test Ended: 21:54:26  
Interval: **4490.00 ft (KB) To 4580.00 ft (KB) (TVD)**  
Total Depth: 4580.00 ft (KB) (TVD)  
Hole Diameter: 7.88 inches Hole Condition: Good  
Test Type: Conventional Bottom Hole (Initial)  
Tester: Leal Cason  
Unit No: 45  
Reference Elevations: 1501.00 ft (KB)  
1489.00 ft (CF)  
KB to GR/CF: 12.00 ft

**Serial #: 6798      Inside**  
Press @ Run Depth: 114.11 psig @ 4491.00 ft (KB)      Capacity: 8000.00 psig  
Start Date: 2013.06.12      End Date: 2013.06.12      Last Calib.: 2013.06.12  
Start Time: 13:15:57      End Time: 21:54:26      Time On Btm: 2013.06.12 @ 15:06:41  
Time Off Btm: 2013.06.12 @ 19:38:56

**TEST COMMENT:** IF: Strong Blow , BOB in 2 minutes  
IS: No Blow Back  
FF: Strong Blow , BOB in 30 seconds  
FS: No Blow Back

## PRESSURE SUMMARY



Time (Min.)	Pressure (psig)	Temp (deg F)	Annotation
0	2271.23	117.51	Initial Hydro-static
4	103.85	118.74	Open To Flow (1)
31	114.62	119.87	Shut-In(1)
91	1003.87	120.12	End Shut-In(1)
92	114.11	120.09	Open To Flow (2)
151	114.11	121.54	Shut-In(2)
272	956.06	122.42	End Shut-In(2)
273	2255.23	122.35	Final Hydro-static

## Recovery

Length (ft)	Description	Volume (bbl)
0.00	2600 GIP	0.00
135.00	GCM 5%G 95%M	0.78

## Gas Rates

Choke (inches)	Pressure (psig)	Gas Rate (Mcf/d)



**TRILOBITE  
TESTING, INC.**

# DRILL STEM TEST REPORT

**FLUID SUMMARY**

Woolsey Operating Co

**21-33S-10W Barber**

125 N Market Ste 1000  
Wichita, KS 67202

**Stewart Trust B-2**

Job Ticket: 50981

**DST#: 1**

ATTN: Scott Alberg

Test Start: 2013.06.12 @ 13:15:56

## Mud and Cushion Information

Mud Type: Gel Chem

Cushion Type:

Oil API:

deg API

Mud Weight: 9.00 lb/gal

Cushion Length:

ft

Water Salinity:

ppm

Viscosity: 47.00 sec/qt

Cushion Volume:

bbbl

Water Loss: 9.59 in<sup>3</sup>

Gas Cushion Type:

Resistivity: ohm.m

Gas Cushion Pressure:

psig

Salinity: 3000.00 ppm

Filter Cake: 0.02 inches

## Recovery Information

Recovery Table

Length ft	Description	Volume bbbl
0.00	2600 GIP	0.000
135.00	GCM 5%G 95%M	0.782

Total Length: 135.00 ft

Total Volume: 0.782 bbl

Num Fluid Samples: 0

Num Gas Bombs: 0

Serial #:

Laboratory Name:

Laboratory Location:

Recovery Comments:

