



## DRILL STEM TEST REPORT

Prepared For: **Herman L. Loeb LLC**

PO Box 838  
Lawrenceville IL 62439

ATTN: Jon Christensen

### **Coolhand #1-26**

### **26-33s-26w Meade KS**

Start Date: 2013.08.09 @ 22:42:21

End Date: 2013.08.10 @ 08:49:51

Job Ticket #: 52292                      DST #: 1

Trilobite Testing, Inc

PO Box 362 Hays, KS 67601

ph: 785-625-4778 fax: 785-625-5620

Printed: 2013.08.19 @ 14:46:35







**TRILOBITE  
TESTING, INC.**

# DRILL STEM TEST REPORT

**TOOL DIAGRAM**

Herman L. Loeb LLC  
 PO Box 838  
 Lawrenceville IL 62439  
 ATTN: Jon Christensen

**26-33s-26w Meade KS**  
**Coolhand #1-26**  
 Job Ticket: 52292      **DST#: 1**  
 Test Start: 2013.08.09 @ 22:42:21

**Tool Information**

Drill Pipe:	Length: 5068.00 ft	Diameter: 3.80 inches	Volume: 71.09 bbl	Tool Weight:	2400.00 lb
Heavy Wt. Pipe:	Length: 0.00 ft	Diameter: 0.00 inches	Volume: 0.00 bbl	Weight set on Packer:	24000.00 lb
Drill Collar:	Length: 210.00 ft	Diameter: 2.25 inches	Volume: 1.03 bbl	Weight to Pull Loose:	93000.00 lb
			<u>Total Volume: 72.12 bbl</u>	Tool Chased	0.00 ft
Drill Pipe Above KB:	18.00 ft			String Weight: Initial	83000.00 lb
Depth to Top Packer:	5288.00 ft			Final	83000.00 lb
Depth to Bottom Packer:	ft				
Interval between Packers:	33.00 ft				
Tool Length:	61.00 ft				
Number of Packers:	2	Diameter: 6.75 inches			

Tool Comments:

Tool Description	Length (ft)	Serial No.	Position	Depth (ft)	Accum. Lengths
------------------	-------------	------------	----------	------------	----------------

C.O. Sub	1.00			5261.00	
Shut in tool	5.00			5266.00	
HMV	5.00			5271.00	
Jars	5.00			5276.00	
Safety Joint	3.00			5279.00	
Packer	4.00			5283.00	28.00      Bottom Of Top Packer
Packer	5.00			5288.00	
Stubb	1.00			5289.00	
Recorder	0.00	8352	Inside	5289.00	
Recorder	0.00	8370	Outside	5289.00	
Perforations	27.00			5316.00	
Bullnose	5.00			5321.00	33.00      Bottom Packers & Anchor

**Total Tool Length: 61.00**



**TRILOBITE  
TESTING, INC.**

# DRILL STEM TEST REPORT

**FLUID SUMMARY**

Herman L. Loeb LLC

**26-33s-26w Meade KS**

PO Box 838  
Lawrenceville IL 62439

**Coolhand #1-26**

Job Ticket: 52292

**DST#: 1**

ATTN: Jon Christensen

Test Start: 2013.08.09 @ 22:42:21

## Mud and Cushion Information

Mud Type: Gel Chem

Cushion Type:

Oil API:

deg API

Mud Weight: 9.00 lb/gal

Cushion Length:

ft

Water Salinity:

4000 ppm

Viscosity: 52.00 sec/qt

Cushion Volume:

bbbl

Water Loss: 8.37 in<sup>3</sup>

Gas Cushion Type:

Resistivity: 0.00 ohm.m

Gas Cushion Pressure:

psig

Salinity: 4000.00 ppm

Filter Cake: 0.20 inches

## Recovery Information

Recovery Table

Length ft	Description	Volume bbbl
35.00	GOCM 6%g 6%o 88%m	0.172
0.00	465 ft.of GIP	0.000

Total Length: 35.00 ft      Total Volume: 0.172 bbl

Num Fluid Samples: 0

Num Gas Bombs: 0

Serial #: none

Laboratory Name:

Laboratory Location:

Recovery Comments:

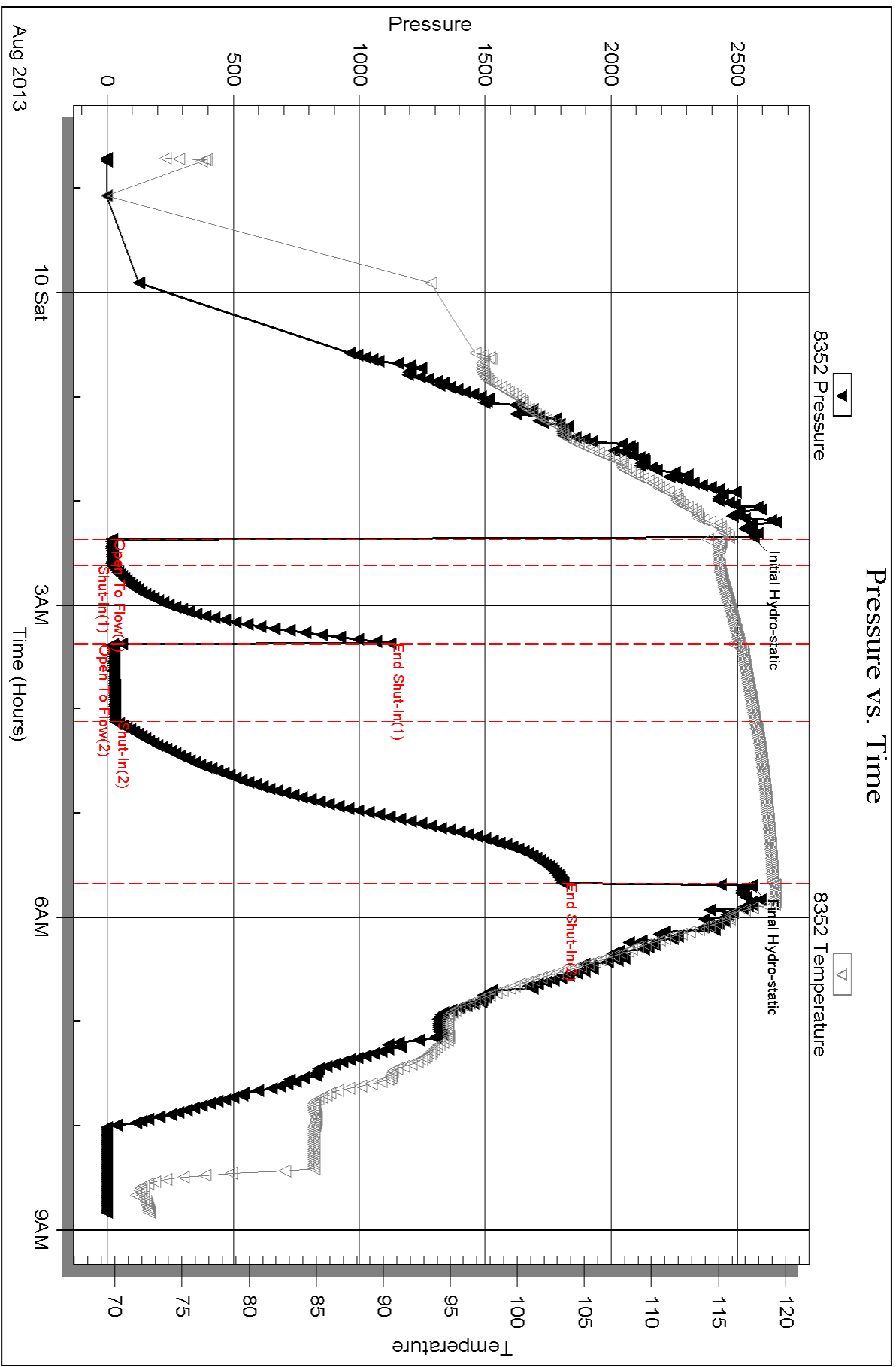
Serial #: 8352

Inside

Herrman L. Loeb LLC

Coolhand #1-26

DST Test Number: 1



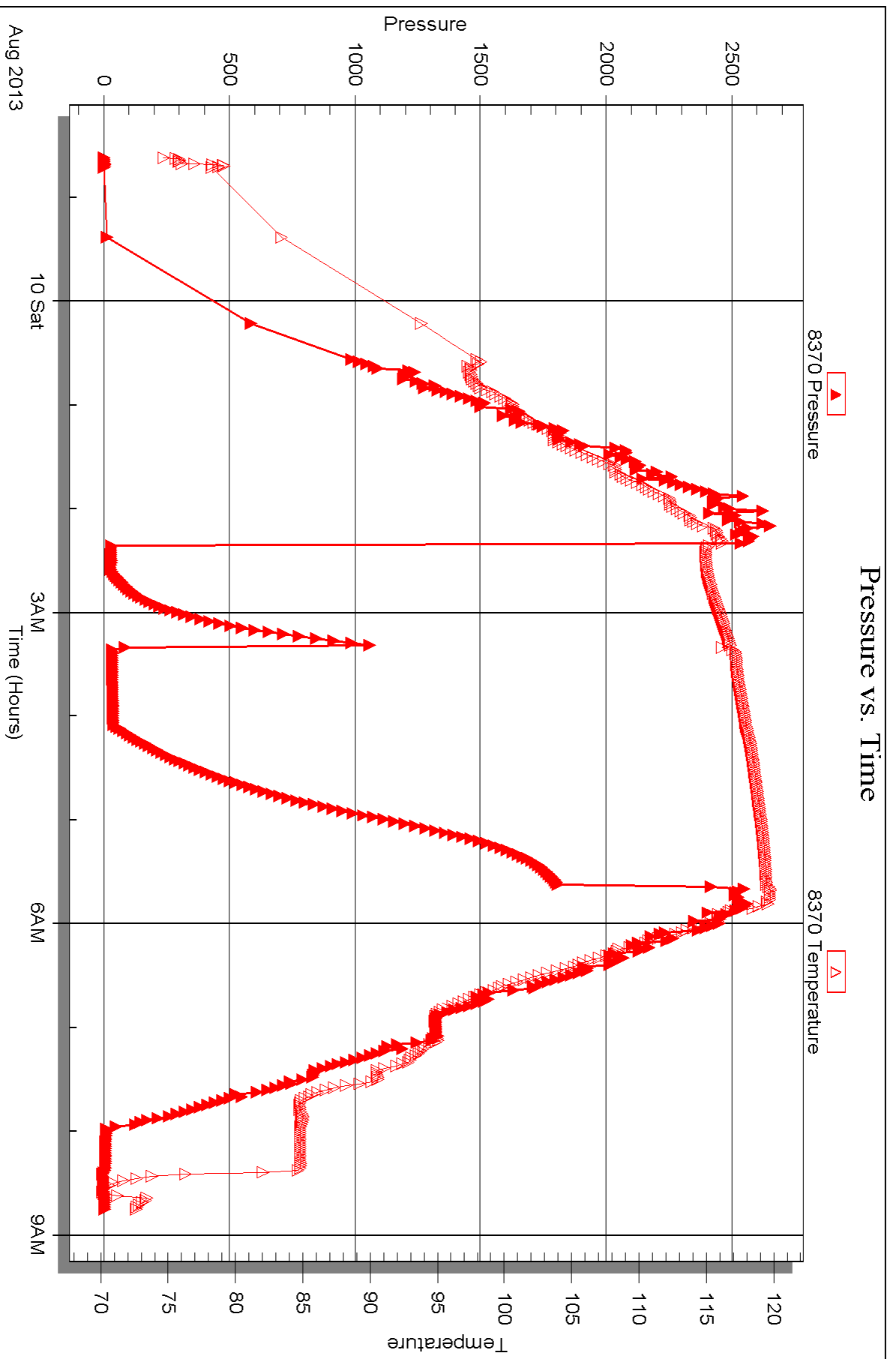
Serial #: 8370

Outside

Herrman L. Loeb LLC

Coolhand #1-26

DST Test Number: 1





## DRILL STEM TEST REPORT

Prepared For: **Herman L. Loeb LLC**

PO Box 838  
Lawrenceville IL 62439

ATTN: Jon Christensen

### **Coolhand #1-26**

### **26-33s-26w Meade KS**

Start Date: 2013.08.12 @ 14:51:35

End Date: 2013.08.13 @ 01:00:35

Job Ticket #: 52293                      DST #: 2

Trilobite Testing, Inc

PO Box 362 Hays, KS 67601

ph: 785-625-4778 fax: 785-625-5620

Printed: 2013.08.19 @ 14:45:48





**TRILOBITE TESTING, INC.**

# DRILL STEM TEST REPORT

Herman L. Loeb LLC  
 PO Box 838  
 Lawrenceville IL 62439  
 ATTN: Jon Christensen

**26-33s-26w Meade KS**  
**Coolhand #1-26**  
 Job Ticket: 52293 **DST#: 2**  
 Test Start: 2013.08.12 @ 14:51:35

## GENERAL INFORMATION:

Formation: **Chester**  
 Deviated: No Whipstock: ft (KB)  
 Time Tool Opened: 17:46:05  
 Time Test Ended: 01:00:35  
 Interval: **5687.00 ft (KB) To 5740.00 ft (KB) (TVD)**  
 Total Depth: 5740.00 ft (KB) (TVD)  
 Hole Diameter: 7.88 inches Hole Condition: Poor  
 Test Type: Conventional Bottom Hole (Reset)  
 Tester: Gary Pevoteaux  
 Unit No: 56  
 Reference Elevations: 2295.00 ft (KB)  
 2284.00 ft (CF)  
 KB to GR/CF: 11.00 ft

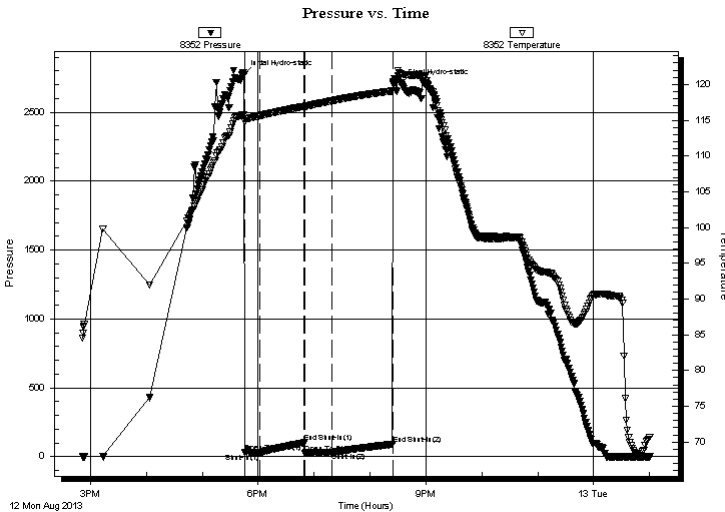
## Serial #: 8352

Inside

Press @ Run Depth: 30.73 psig @ 5688.00 ft (KB) Capacity: 8000.00 psig  
 Start Date: 2013.08.12 End Date: 2013.08.13 Last Calib.: 2013.08.13  
 Start Time: 14:51:40 End Time: 01:00:35 Time On Btm: 2013.08.12 @ 17:44:35  
 Time Off Btm: 2013.08.12 @ 20:33:20

TEST COMMENT: IF:Weak blow . Slow increase to 1 1/2".  
 IS:No blow .  
 FF:Weak blow . 1 1/2 - 2".  
 FS:No blow .

## PRESSURE SUMMARY



Time (Min.)	Pressure (psig)	Temp (deg F)	Annotation
0	2775.99	115.81	Initial Hydro-static
2	31.01	114.83	Open To Flow (1)
17	27.29	115.60	Shut-In(1)
65	101.22	116.94	End Shut-In(1)
66	26.92	116.90	Open To Flow (2)
95	30.73	117.70	Shut-In(2)
160	90.03	119.10	End Shut-In(2)
169	2705.05	121.41	Final Hydro-static

## Recovery

Length (ft)	Description	Volume (bbl)
25.00	Drig.Mud	0.12
0.00	35 ft.of GIP	0.00

\* Recovery from multiple tests

## Gas Rates

Choke (inches)	Pressure (psig)	Gas Rate (Mcf/d)





**TRILOBITE  
TESTING, INC.**

# DRILL STEM TEST REPORT

**TOOL DIAGRAM**

Herman L. Loeb LLC

**26-33s-26w Meade KS**

PO Box 838  
Lawrenceville IL 62439

**Coolhand #1-26**

Job Ticket: 52293

**DST#: 2**

ATTN: Jon Christensen

Test Start: 2013.08.12 @ 14:51:35

## Tool Information

Drill Pipe:	Length: 5481.00 ft	Diameter: 3.80 inches	Volume: 76.88 bbl	Tool Weight:	2400.00 lb
Heavy Wt. Pipe:	Length: 0.00 ft	Diameter: 0.00 inches	Volume: 0.00 bbl	Weight set on Packer:	24000.00 lb
Drill Collar:	Length: 210.00 ft	Diameter: 2.25 inches	Volume: 1.03 bbl	Weight to Pull Loose:	142000.0 lb
			<u>Total Volume: 77.91 bbl</u>	Tool Chased	0.00 ft
Drill Pipe Above KB:	32.00 ft			String Weight: Initial	90000.00 lb
Depth to Top Packer:	5687.00 ft			Final	90500.00 lb
Depth to Bottom Packer:	ft				
Interval between Packers:	53.00 ft				
Tool Length:	81.00 ft				
Number of Packers:	2	Diameter: 6.75 inches			

Tool Comments:

Tool Description	Length (ft)	Serial No.	Position	Depth (ft)	Accum. Lengths
------------------	-------------	------------	----------	------------	----------------

C.O. Sub	1.00			5660.00	
Shut in tool	5.00			5665.00	
HMV	5.00			5670.00	
Jars	5.00			5675.00	
Safety Joint	3.00			5678.00	
Packer	4.00			5682.00	28.00 Bottom Of Top Packer
Packer	5.00			5687.00	
Stubb	1.00			5688.00	
Recorder	0.00	8352	Inside	5688.00	
Recorder	0.00	8370	Outside	5688.00	
Perforations	3.00			5691.00	
Blank Spacing	32.00			5723.00	
Perforations	12.00			5735.00	
Bullnose	5.00			5740.00	53.00 Bottom Packers & Anchor

**Total Tool Length: 81.00**



**TRILOBITE  
TESTING, INC.**

# DRILL STEM TEST REPORT

**FLUID SUMMARY**

Herman L. Loeb LLC

**26-33s-26w Meade KS**

PO Box 838  
Lawrenceville IL 62439

**Coolhand #1-26**

Job Ticket: 52293

**DST#: 2**

ATTN: Jon Christensen

Test Start: 2013.08.12 @ 14:51:35

## Mud and Cushion Information

Mud Type: Gel Chem

Cushion Type:

Oil API:

deg API

Mud Weight: 9.00 lb/gal

Cushion Length:

ft

Water Salinity:

4000 ppm

Viscosity: 51.00 sec/qt

Cushion Volume:

bbbl

Water Loss: 7.98 in<sup>3</sup>

Gas Cushion Type:

Resistivity: 0.00 ohm.m

Gas Cushion Pressure:

psig

Salinity: 4000.00 ppm

Filter Cake: 0.20 inches

## Recovery Information

Recovery Table

Length ft	Description	Volume bbl
25.00	Drig.Mud	0.123
0.00	35 ft.of GIP	0.000

Total Length: 25.00 ft      Total Volume: 0.123 bbl

Num Fluid Samples: 0

Num Gas Bombs: 0

Serial #: none

Laboratory Name:

Laboratory Location:

Recovery Comments:

Serial #: 8352

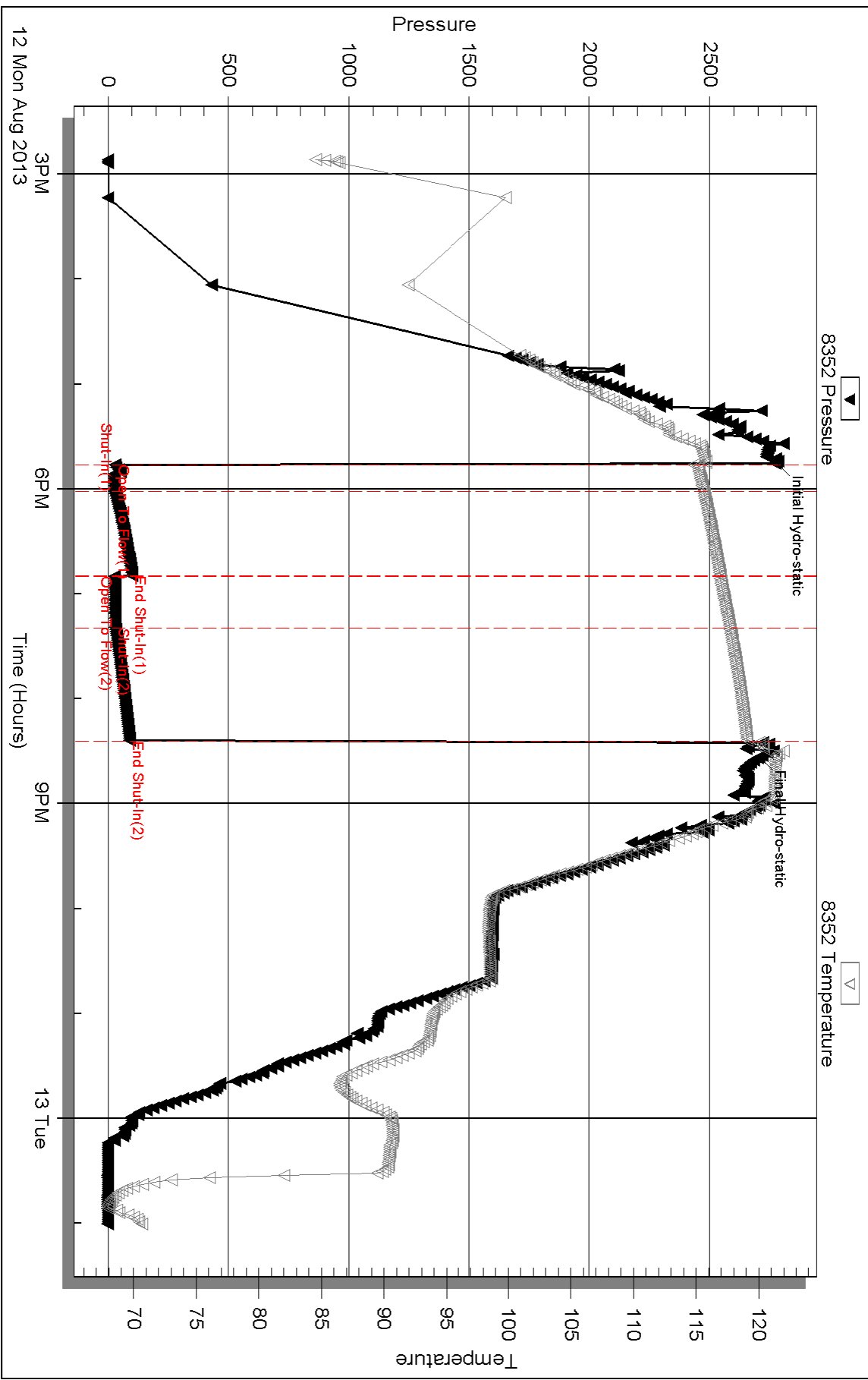
Inside

Herrman L. Loeb LLC

Coolhand #1-26

DST Test Number: 2

# Pressure vs. Time



Triobite Testing, Inc

Ref. No: 52293

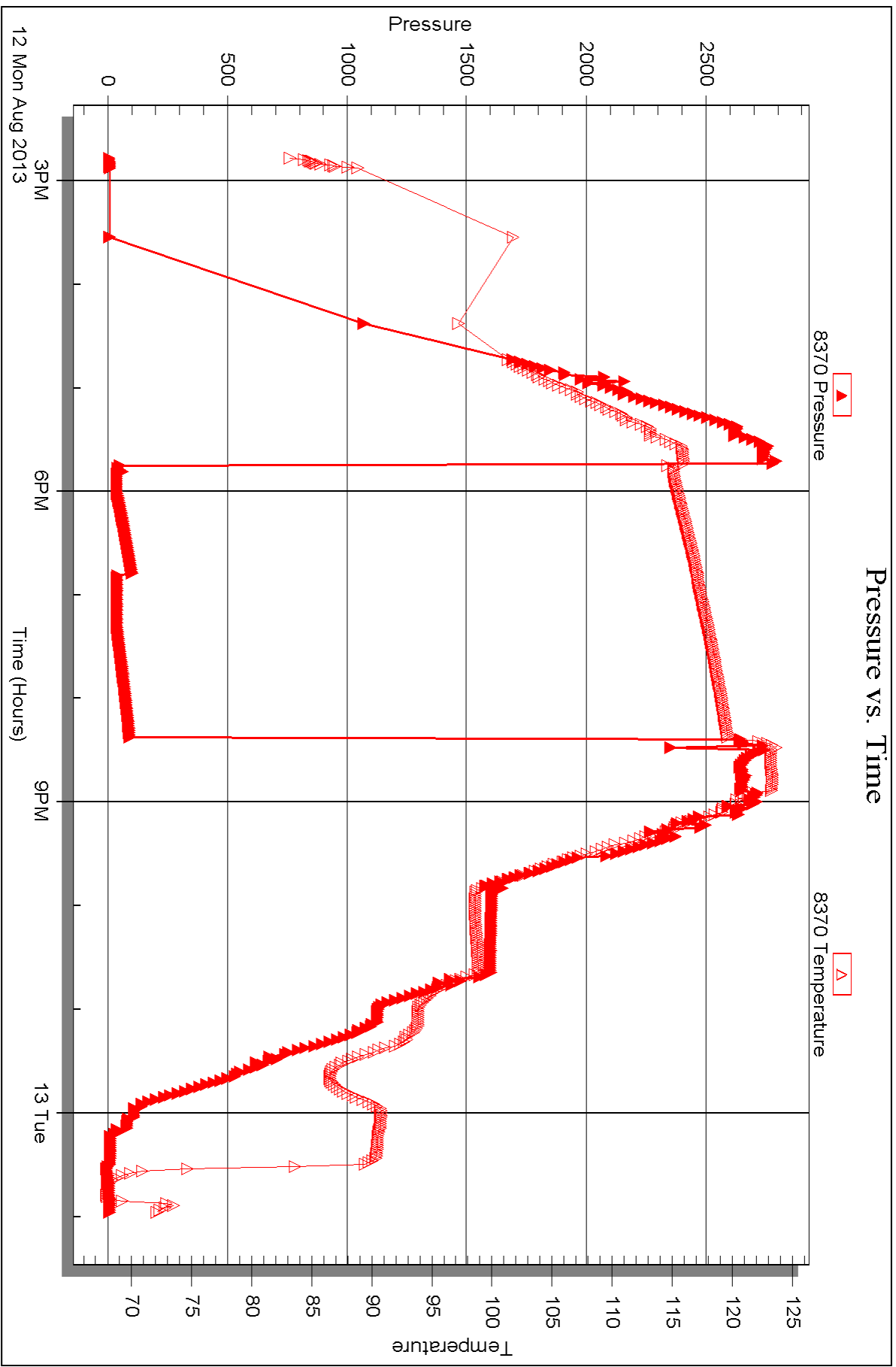
Printed: 2013.08.19 @ 14:45:51

Serial #: 8370

Outside Herman L. Loeb LLC

Coolhand #1-26

DST Test Number: 2





## DRILL STEM TEST REPORT

Prepared For: **Herman L. Loeb LLC**

PO Box 838  
Lawrenceville IL 62439

ATTN: Jon Christensen

### **Coolhand #1-26**

### **26-33s-26w Meade KS**

Start Date: 2013.08.14 @ 13:39:24

End Date: 2013.08.15 @ 00:59:09

Job Ticket #: 47523                      DST #: 3

Trilobite Testing, Inc

PO Box 362 Hays, KS 67601

ph: 785-625-4778 fax: 785-625-5620

Printed: 2013.08.19 @ 14:49:24



**TRILOBITE  
TESTING, INC.**

# DRILL STEM TEST REPORT

Herman L. Loeb LLC  
 PO Box 838  
 Lawrenceville IL 62439  
 ATTN: Jon Christensen

**26-33s-26w Meade KS**  
**Coolhand #1-26**  
 Job Ticket: 47523 **DST#: 3**  
 Test Start: 2013.08.14 @ 13:39:24

## GENERAL INFORMATION:

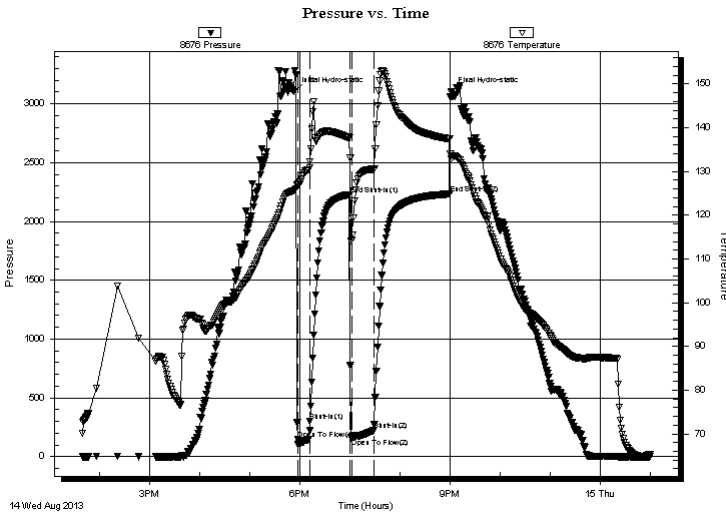
Formation: **Miss- Spergen**  
 Deviated: No Whipstock: ft (KB)  
 Time Tool Opened: 17:57:24  
 Time Test Ended: 00:59:09  
 Interval: **6346.00 ft (KB) To 6396.00 ft (KB) (TVD)**  
 Total Depth: 6444.00 ft (KB) (TVD)  
 Hole Diameter: 7.88 inches Hole Condition: Fair  
 Test Type: Conventional Straddle (Reset)  
 Tester: Chris Staats  
 Unit No: 47  
 Reference Elevations: 2295.00 ft (KB)  
 2284.00 ft (CF)  
 KB to GR/CF: 11.00 ft

**Serial #: 8676 Outside**  
 Press @ Run Depth: 222.22 psig @ 6347.00 ft (KB) Capacity: 8000.00 psig  
 Start Date: 2013.08.14 End Date: 2013.08.15 Last Calib.: 2013.08.15  
 Start Time: 13:39:29 End Time: 00:59:09 Time On Btm: 2013.08.14 @ 17:53:24  
 Time Off Btm: 2013.08.14 @ 21:01:39

**TEST COMMENT:** IF: Strong blow BOB 1 min GTS 8 min  
 IS: Strong blow back BOB 31 min  
 FF: Strong blow BOB 1 sec  
 FS: Fair blow back 7"

## PRESSURE SUMMARY

Time (Min.)	Pressure (psig)	Temp (deg F)	Annotation
0	3100.16	125.62	Initial Hydro-static
4	145.68	127.12	Open To Flow (1)
19	302.41	132.20	Shut-In(1)
67	2230.04	137.70	End Shut-In(1)
69	154.83	114.31	Open To Flow (2)
96	222.22	130.44	Shut-In(2)
186	2233.79	137.40	End Shut-In(2)
189	3105.06	132.91	Final Hydro-static



## Recovery

Length (ft)	Description	Volume (bbl)
310.00	M,W 5% mud 95% water	2.68
155.00	G,W,M 5% gas 20% water 75% mud	2.17
0.00	GTS	0.00

\* Recovery from multiple tests

## Gas Rates

	Choke (inches)	Pressure (psig)	Gas Rate (Mcf/d)
First Gas Rate	0.25	6.00	32.05
Last Gas Rate	0.50	10.00	163.25
Max. Gas Rate	0.50	20.00	230.70







**TRILOBITE  
TESTING, INC.**

# DRILL STEM TEST REPORT

**TOOL DIAGRAM**

Herman L. Loeb LLC

**26-33s-26w Meade KS**

PO Box 838  
Lawrenceville IL 62439

**Coolhand #1-26**

Job Ticket: 47523

**DST#: 3**

ATTN: Jon Christensen

Test Start: 2013.08.14 @ 13:39:24

## Tool Information

Drill Pipe:	Length: 6150.00 ft	Diameter: 3.80 inches	Volume: 86.27 bbl	Tool Weight:	2400.00 lb
Heavy Wt. Pipe:	Length: 0.00 ft	Diameter: 0.00 inches	Volume: 0.00 bbl	Weight set on Packer:	25000.00 lb
Drill Collar:	Length: 183.00 ft	Diameter: 2.25 inches	Volume: 0.90 bbl	Weight to Pull Loose:	105000.0 lb
			<u>Total Volume: 87.17 bbl</u>	Tool Chased	2.00 ft
Drill Pipe Above KB:	15.00 ft			String Weight: Initial	98000.00 lb
Depth to Top Packer:	6346.00 ft			Final	100000.0 lb
Depth to Bottom Packer:	6444.00 ft				
Interval between Packers:	98.00 ft				
Tool Length:	126.00 ft				
Number of Packers:	2	Diameter: 6.75 inches			

Tool Comments:

Tool Description	Length (ft)	Serial No.	Position	Depth (ft)	Accum. Lengths
------------------	-------------	------------	----------	------------	----------------

C.O. Sub	1.00			6319.00	
Shut in tool	5.00			6324.00	
HMV	5.00			6329.00	
Jars	5.00			6334.00	
Safety Joint	3.00			6337.00	
Packer	4.00			6341.00	28.00 Bottom Of Top Packer
Packer	5.00			6346.00	
Stubb	1.00			6347.00	
Recorder	0.00	6773	Inside	6347.00	
Recorder	0.00	8676	Outside	6347.00	
Change Over Sub	1.00			6348.00	
Drill Pipe	32.00			6380.00	
Change Over Sub	1.00			6381.00	
Perforations	10.00			6391.00	
Blank Off Sub	1.00			6392.00	
Packer - Shale	5.00			6397.00	
Recorder	0.00	6719	Below	6397.00	
Perforations	10.00			6407.00	
Change Over Sub	1.00			6408.00	
Drill Pipe	32.00			6440.00	
Change Over Sub	1.00			6441.00	
Bullnose	3.00			6444.00	98.00 Bottom Packers & Anchor

**Total Tool Length: 126.00**



**TRILOBITE  
TESTING, INC.**

# DRILL STEM TEST REPORT

**FLUID SUMMARY**

Herman L. Loeb LLC

**26-33s-26w Meade KS**

PO Box 838  
Lawrenceville IL 62439

**Coolhand #1-26**

Job Ticket: 47523

**DST#: 3**

ATTN: Jon Christensen

Test Start: 2013.08.14 @ 13:39:24

## Mud and Cushion Information

Mud Type: Gel Chem

Cushion Type:

Oil API:

deg API

Mud Weight: 9.00 lb/gal

Cushion Length:

ft

Water Salinity:

11 ppm

Viscosity: 54.00 sec/qt

Cushion Volume:

bbbl

Water Loss: 8.38 in<sup>3</sup>

Gas Cushion Type:

Resistivity: 0.00 ohm.m

Gas Cushion Pressure:

psig

Salinity: 3500.00 ppm

Filter Cake: 0.20 inches

## Recovery Information

Recovery Table

Length ft	Description	Volume bbl
310.00	M,W 5% mud 95% water	2.681
155.00	G,W,M 5% gas 20% water 75% mud	2.174
0.00	GTS	0.000

Total Length: 465.00 ft

Total Volume: 4.855 bbl

Num Fluid Samples: 0

Num Gas Bombs: 0

Serial #:

Laboratory Name:

Laboratory Location:

Recovery Comments:



**TRILOBITE  
TESTING, INC.**

## DRILL STEM TEST REPORT

**GAS RATES**

Herman L. Loeb LLC

**26-33s-26w Meade KS**

PO Box 838  
Lawrenceville IL 62439

**Coolhand #1-26**

Job Ticket: 47523

**DST#: 3**

ATTN: Jon Christensen

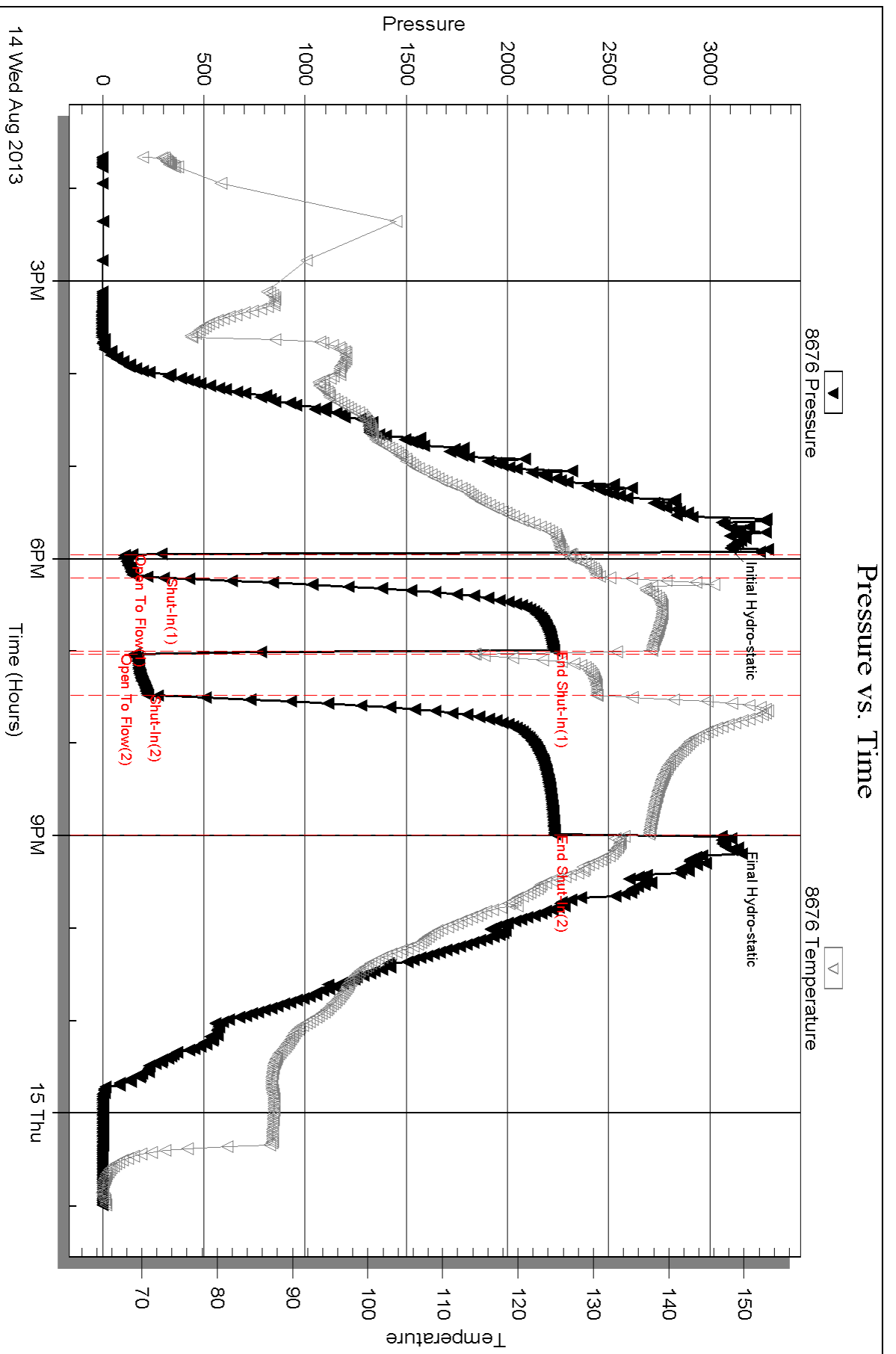
Test Start: 2013.08.14 @ 13:39:24

### Gas Rates Information

Temperature: 59 (deg F)  
Relative Density: 0.65  
Z Factor: 0.8

Gas Rates Table

Flow Period	Elapsed Time	Choke (inches)	Pressure (psig)	Gas Rate (Mcf/d)
1	13	0.25	6.00	32.05
1	15	0.25	7.00	33.63
2	5	0.50	20.00	230.70
2	10	0.50	19.00	223.96
2	15	0.50	16.00	203.72
2	20	0.50	12.00	176.74
2	25	0.50	10.00	163.25
2	30	0.50	10.00	163.25

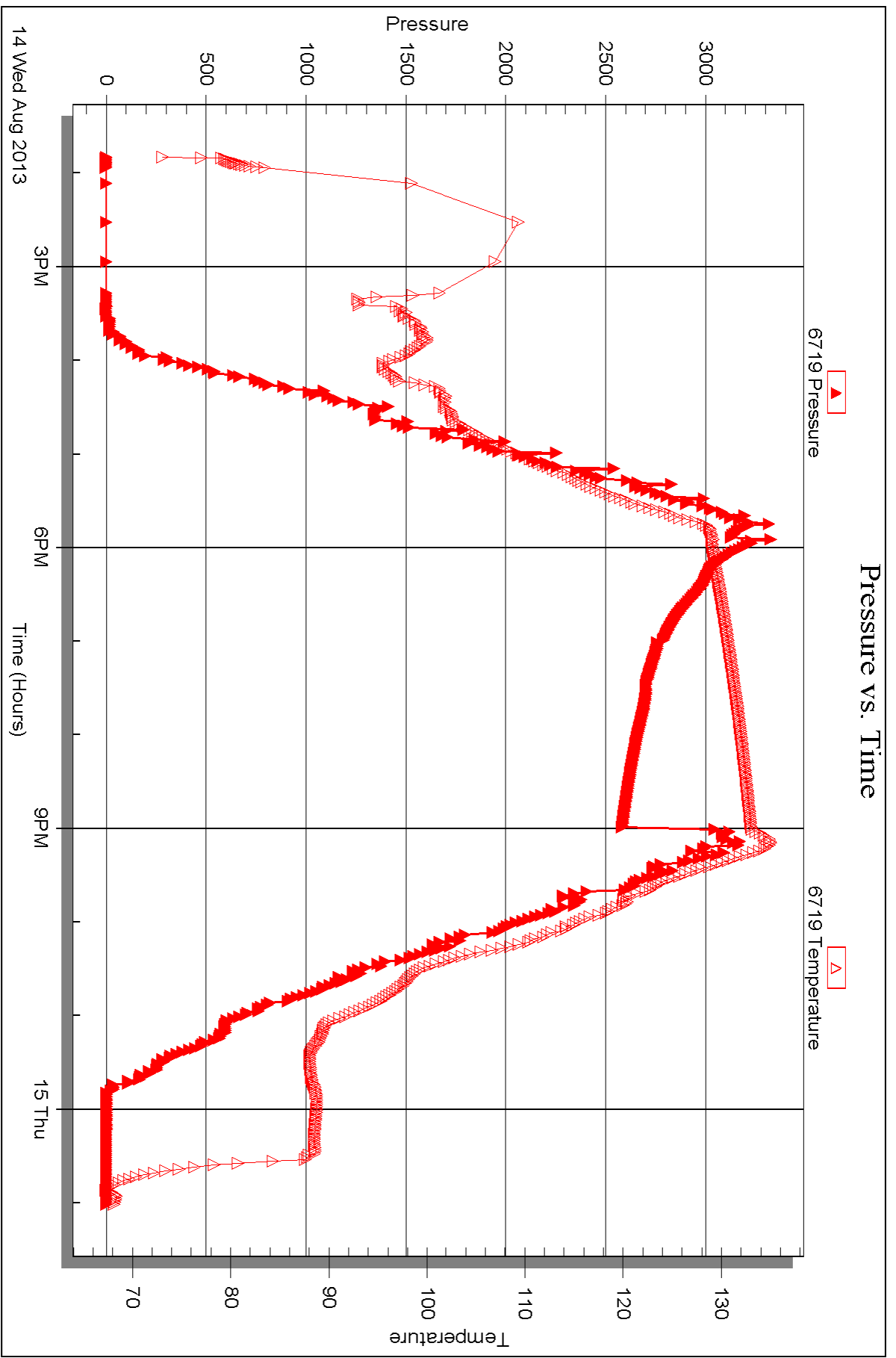


Serial #: 6719

Below (Stratton) L. Loeb LLC

Coolhand #1-26

DST Test Number: 3







# TRILOBITE TESTING INC.

1515 Commerce Parkway • Hays, Kansas 67601

## Test Ticket

NO. 52293

Well Name & No. COOLHAND # 1-26 Test No. 2 Date 8-12-13  
 Company HERMAN L. LOEB, LLC Elevation 2295 KB 2284 GL  
 Address P.O. Box 838, LAWRENCEVILLE IL. 62439  
 Co. Rep / Geo. JOHN CHRISTENSEN Rig STERLING DRILL #2  
 Location: Sec. 26 Twp. 33S Rge. 26W Co. MEADE State KS.

Interval Tested 5687 - 5740' Zone Tested CHESTER  
 Anchor Length 53' Drill Pipe Run 5481' Mud Wt. 9.0  
 Top Packer Depth 5682' Drill Collars Run 210' Vis SI  
 Bottom Packer Depth 5687' Wt. Pipe Run 0 WL 8.0cc  
 Total Depth 5740' Chlorides 4,000 ppm System LCM 7#

Blow Description IF: Weak blow. Slow increase to 1 1/2". IST: No blow.  
FF: Weak blow. 1 1/2 - 2". FSI: No blow.

Rec	Feet of	%gas	%oil	%water	%mud
<u>35</u>	<u>Coas in pipe</u>				
<u>25</u>	<u>Drilg. Mud.</u>				

Rec Total 25 Fluid BHT 119° Gravity N/A API RW N.C. @ — °F Chlorides 4,000 ppm

(A) Initial Hydrostatic <u>2776</u>	<input checked="" type="checkbox"/> Test <u>1350</u>	* T-On Location <u>1425</u>
(B) First Initial Flow <u>31</u>	<input checked="" type="checkbox"/> Jars <u>250</u>	T-Started <u>1451</u>
(C) First Final Flow <u>27</u>	<input checked="" type="checkbox"/> Safety Joint <u>75</u>	T-Open <u>1746</u>
(D) Initial Shut-In <u>101</u>	<input type="checkbox"/> Circ Sub	T-Pulled <u>2023</u>
(E) Second Initial Flow <u>27</u>	<input type="checkbox"/> Hourly Standby	T-Out <u>0100</u>
(F) Second Final Flow <u>31</u>	<input checked="" type="checkbox"/> Mileage <u>226</u> 350.30	Comments
(G) Final Shut-In <u>90</u>	<input type="checkbox"/> Sampler	
(H) Final Hydrostatic <u>2705</u>	<input type="checkbox"/> Straddle	<input type="checkbox"/> Ruined Shale Packer
	<input type="checkbox"/> Shale Packer	<input type="checkbox"/> Ruined Packer
	<input type="checkbox"/> Extra Packer	<input type="checkbox"/> Extra Copies

Initial Open 15  
 Initial Shut-In 45  
 Final Flow 30  
 Final Shut-In 60

Day Standby x2+ \* 1d 29.75h  
 Accessibility  
 Sub Total 2025.30

Sub Total 991.67  
 Total 3016.97  
 MP/DST Disc't

Approved By [Signature] Our Representative [Signature]  
 TriLOBITE TESTING, Inc. shall not be liable for damaged of any kind of the property or personnel of the one for whom a test is made, or for any loss suffered or sustained, directly or indirectly, through the use of its equipment, or its statements or opinion concerning the results of any test, tools lost or damaged in the hole shall be paid for at cost by the party for whom the test is made.





# TRILOBITE TESTING INC.

P.O. Box 1733 • Hays, Kansas 67601

## Test Ticket

NO. 47523

4/10

Well Name & No. Cool Hand #1-26 Test No. 3 Date 8-14-13  
 Company Herman L. Loeb LLC Elevation 2295 KB 2284 GL  
 Address PO Box 838 Lawrenceville IL 62439  
 Co. Rep / Geo. George Payne / Jon Christensen Rig  
 Location: Sec. 26 Twp. 33 Rge. 26 Co. Meade State KS

Interval Tested 6346 - 6396 Zone Tested Miss Spengen  
 Anchor Length 50 Drill Pipe Run 6150 Mud Wt. 9.1  
 Top Packer Depth 6341 Drill Collars Run 183 Vis 54  
 Bottom Packer Depth 6346 Wt. Pipe Run 0 WL 8.4  
 Total Depth 6444 Chlorides 3500 ppm System LCM 4#

Blow Description IF: Strong blow BOB 1 min GTS 8 min  
ISF: Strong blow back BOB 31 min  
FF: Strong blow BOB 1 sec  
FSI: Fair blow back >" Bottom Straddle packer <sup>held</sup> started.

Rec	Feet of	%gas	%oil	%water	%mud
	<u>6333' GIP</u>				
Rec <u>310'</u>	Feet of <u>M, W</u>	%gas	%oil <u>95</u>	%water <u>5</u>	%mud
Rec <u>155'</u>	Feet of <u>G, W, M</u>	<u>5</u> %gas	%oil <u>20</u>	%water <u>75</u>	%mud
Rec	Feet of	%gas	%oil	%water	%mud
Rec	Feet of	%gas	%oil	%water	%mud
Rec Total <u>465'</u>	BHT <u>140</u>	Gravity <u>—</u>	API RW <u>.62 @ 66</u>	°F Chlorides <u>11,000</u>	ppm

(A) Initial Hydrostatic 3100  Test 1450 T-On Location 13:15  
 (B) First Initial Flow 145  Jars 250 T-Started 13:39  
 (C) First Final Flow 302  Safety Joint 75 T-Open 17:57  
 (D) Initial Shut-In 2230  Circ Sub T-Pulled 21:00  
 (E) Second Initial Flow 154  Hourly Standby T-Out 00:45  
 (F) Second Final Flow 222  Mileage ~~230 miles~~ 700.60 Comments loaded tools  
 (G) Final Shut-In 2233  Sampler 8-16 21:00  
 (H) Final Hydrostatic 3105  Straddle 600  Ruined Shale Packer  
 Shale Packer  Ruined Packer  
 Extra Packer  Extra Copies  
 Extra Recorder Sub Total 800  
 Day Standby 1d 20.25h Total 3875.60  
 Accessibility MP/DST Disc't  
 Sub Total 3075.60

Approved By [Signature] Our Representative [Signature]

TriLOBite Testing Inc. shall not be liable for damaged of any kind of the property or personnel of the one for whom a test is made, or for any loss suffered or sustained, directly or indirectly, through the use of its equipment, or its statements or opinion concerning the results of any test, tools lost or damaged in the hole shall be paid for at cost by the party for whom the test is made.