



**TRILOBITE
TESTING, INC.**

DRILL STEM TEST REPORT

Shakespeare Oil Co., Inc.

S2-16-31 Scott, KS

202 W Main St.
Salem, IL 62881

York #1-2

Job Ticket: 52798

DST#: 1

ATTN: Tim Priest

Test Start: 2013.08.17 @ 21:55:00

GENERAL INFORMATION:

Formation: **LKC 'A'**

Deviated: No Whipstock: ft (KB)

Time Tool Opened: 00:02:40

Time Test Ended: 05:25:30

Test Type: Conventional Bottom Hole (Initial)

Tester: Chuck Smith

Unit No: 62

Interval: 3924.00 ft (KB) To 3950.00 ft (KB) (TVD)

Total Depth: 3950.00 ft (KB) (TVD)

Hole Diameter: 7.88 inches Hole Condition: Good

Reference Elevations: ft (KB)

2866.00 ft (CF)

KB to GR/CF: ft

Serial #: 8018 Inside

Press @ Run Depth: 66.43 psig @ 3931.00 ft (KB)

Start Date: 2013.08.17

End Date: 2013.08.18

Start Time: 21:55:02

End Time: 05:25:30

Capacity: 8000.00 psig

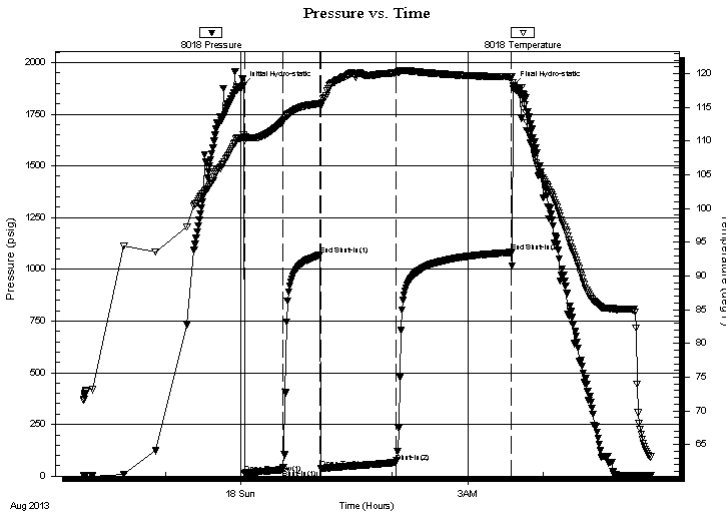
Last Calib.: 2013.08.18

Time On Btm: 2013.08.18 @ 00:01:10

Time Off Btm: 2013.08.18 @ 03:36:20

TEST COMMENT: 1 1/2" Blow .
No return.
2" Blow .
No return.

PRESSURE SUMMARY



Time (Min.)	Pressure (psig)	Temp (deg F)	Annotation
0	1887.35	110.56	Initial Hydro-static
2	13.41	110.05	Open To Flow (1)
32	31.66	112.90	Shut-In(1)
62	1069.91	115.57	End Shut-In(1)
62	37.04	115.14	Open To Flow (2)
122	66.43	120.14	Shut-In(2)
214	1082.44	119.51	End Shut-In(2)
216	1888.45	118.26	Final Hydro-static

Recovery

Length (ft)	Description	Volume (bbl)
0.00	RW: .177 @ 60 Degrees F = 50000 PPM	0.00
60.00	MW 30m 70w	0.30
60.00	OSMW 15m 85w	0.30

Gas Rates

Choke (inches)	Pressure (psig)	Gas Rate (Mcf/d)



**TRILOBITE
TESTING, INC.**

DRILL STEM TEST REPORT

FLUID SUMMARY

Shakespeare Oil Co., Inc.

S2-16-31 Scott, KS

202 W Main St.
Salem, IL 62881

York #1-2

Job Ticket: 52798

DST#: 1

ATTN: Tim Priest

Test Start: 2013.08.17 @ 21:55:00

Mud and Cushion Information

Mud Type: Gel Chem

Cushion Type:

Oil API:

deg API

Mud Weight: 9.00 lb/gal

Cushion Length:

ft

Water Salinity:

50000 ppm

Viscosity: 55.00 sec/qt

Cushion Volume:

bbbl

Water Loss: 7.99 in³

Gas Cushion Type:

Resistivity: ohm.m

Gas Cushion Pressure:

psig

Salinity: 2000.00 ppm

Filter Cake: 1.00 inches

Recovery Information

Recovery Table

Length ft	Description	Volume bbl
0.00	RW: .177 @ 60 Degrees F = 50000 PPM	0.000
60.00	MW 30m 70w	0.295
60.00	OSMW 15m 85w	0.295

Total Length: 120.00 ft

Total Volume: 0.590 bbl

Num Fluid Samples: 0

Num Gas Bombs: 0

Serial #:

Laboratory Name:

Laboratory Location:

Recovery Comments:

Serial #: 8018

Inside

Shakespeare Oil Co., Inc.

York #1-2

DST Test Number: 1

Pressure vs. Time

