



TRILOBITE TESTING, INC.

DRILL STEM TEST REPORT

Shakespeare Oil Co., Inc.

S2-16-31 Scott, KS

202 W Main St.
Salem, IL 62881

York #1-2

Job Ticket: 52799

DST#: 2

ATTN: Tim Priest

Test Start: 2013.08.18 @ 14:10:00

GENERAL INFORMATION:

Formation: **LKC 'B'**
 Deviated: No Whipstock: ft (KB)
 Test Type: Conventional Bottom Hole (Reset)
 Time Tool Opened: 15:54:30
 Tester: Chuck Smith
 Time Test Ended: 19:46:09
 Unit No: 62
 Interval: **3946.00 ft (KB) To 3972.00 ft (KB) (TVD)**
 Reference Elevations: 2876.00 ft (KB)
 Total Depth: 3972.00 ft (KB) (TVD)
 2866.00 ft (CF)
 Hole Diameter: 7.88 inches
 Hole Condition: Good
 KB to GR/CF: 10.00 ft

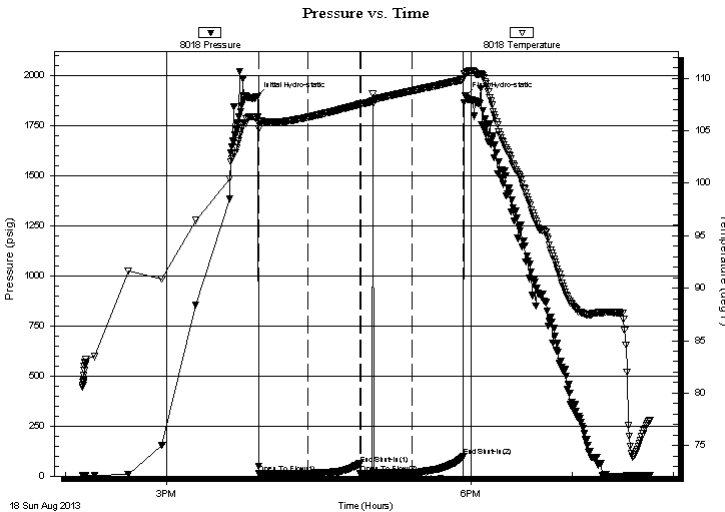
Serial #: 8018

Inside

Press @ Run Depth: 16.27 psig @ 3953.00 ft (KB) Capacity: 8000.00 psig
 Start Date: 2013.08.18 End Date: 2013.08.18 Last Calib.: 2013.08.18
 Start Time: 14:10:02 End Time: 19:46:10 Time On Btm: 2013.08.18 @ 15:52:50
 Time Off Btm: 2013.08.18 @ 17:56:20

TEST COMMENT: Weak surface blow died @ 20 min.
 No return.
 No blow, flushed tool, surge died.
 No return.

PRESSURE SUMMARY



Time (Min.)	Pressure (psig)	Temp (deg F)	Annotation
0	1894.40	106.26	Initial Hydro-static
2	13.44	105.70	Open To Flow (1)
31	14.31	106.28	Shut-In(1)
62	61.19	107.52	End Shut-In(1)
62	14.35	107.51	Open To Flow (2)
93	16.27	108.80	Shut-In(2)
123	96.39	109.88	End Shut-In(2)
124	1895.82	110.43	Final Hydro-static

Recovery

Length (ft)	Description	Volume (bbl)
1.00	VSOCM 1 to 99m	0.00

* Recovery from multiple tests

Gas Rates

Choke (inches)	Pressure (psig)	Gas Rate (Mcf/d)



**TRILOBITE
TESTING, INC.**

DRILL STEM TEST REPORT

FLUID SUMMARY

Shakespeare Oil Co., Inc.

S2-16-31 Scott, KS

202 W Main St.
Salem, IL 62881

York #1-2

Job Ticket: 52799

DST#: 2

ATTN: Tim Priest

Test Start: 2013.08.18 @ 14:10:00

Mud and Cushion Information

Mud Type: Gel Chem

Cushion Type:

Oil API:

deg API

Mud Weight: 9.00 lb/gal

Cushion Length:

ft

Water Salinity:

ppm

Viscosity: 55.00 sec/qt

Cushion Volume:

bbbl

Water Loss: 8.77 in³

Gas Cushion Type:

Resistivity: ohm.m

Gas Cushion Pressure:

psig

Salinity: 3000.00 ppm

Filter Cake: 1.00 inches

Recovery Information

Recovery Table

Length ft	Description	Volume bbl
1.00	VSOCM 1o 99m	0.005

Total Length: 1.00 ft Total Volume: 0.005 bbl

Num Fluid Samples: 0

Num Gas Bombs: 0

Serial #:

Laboratory Name:

Laboratory Location:

Recovery Comments:

