



**TRILOBITE
TESTING, INC.**

DRILL STEM TEST REPORT

Shakespeare Oil Co., Inc.

S2-16s-31w Scott, KS

202 W Main St.
Salem, IL 62881

York #1-2

Job Ticket: 53038

DST#: 3

ATTN: Tim Priest

Test Start: 2013.08.19 @ 08:23:00

GENERAL INFORMATION:

Formation: **Lansing "E-F"**

Deviated: No Whipstock: ft (KB)

Time Tool Opened: 10:32:50

Time Test Ended: 14:37:09

Test Type: Conventional Bottom Hole (Reset)

Tester: Cornelio Landa III (

Unit No: 62

Interval: 4008.00 ft (KB) To 4024.00 ft (KB) (TVD)

Total Depth: 4024.00 ft (KB) (TVD)

Hole Diameter: 7.88 inches Hole Condition: Fair

Reference Elevations: 2876.00 ft (KB)

2866.00 ft (CF)

KB to GR/CF: 10.00 ft

Serial #: 8018

Inside

Press @ Run Depth: 21.62 psig @ 4011.00 ft (KB)

Start Date: 2013.08.19

End Date:

2013.08.19

Start Time: 08:23:02

End Time:

14:37:10

Capacity: 8000.00 psig

Last Calib.: 2013.08.19

Time On Btm: 2013.08.19 @ 10:32:40

Time Off Btm: 2013.08.19 @ 13:03:09

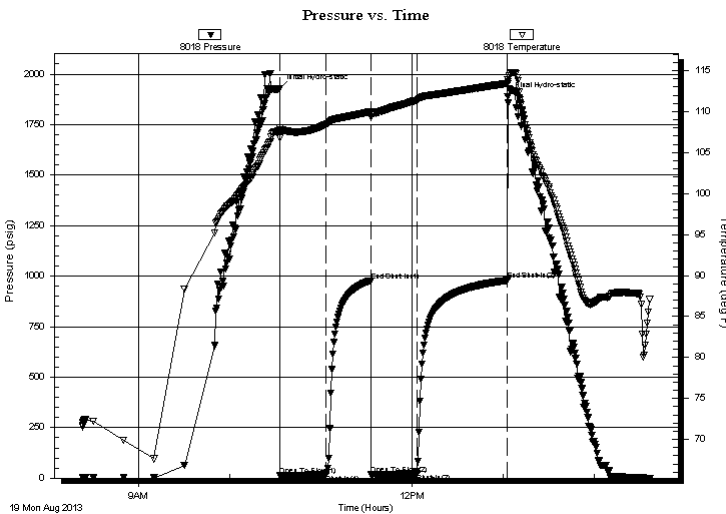
TEST COMMENT: IF: Surface blow -Died in 10 mins.

IS: No return

FF: No blow

FS: No return

PRESSURE SUMMARY



Time (Min.)	Pressure (psig)	Temp (deg F)	Annotation
0	1929.46	107.97	Initial Hydro-static
1	12.81	106.74	Open To Flow (1)
31	16.75	108.42	Shut-In(1)
61	978.17	109.99	End Shut-In(1)
61	17.55	109.34	Open To Flow (2)
91	21.62	111.37	Shut-In(2)
151	979.42	113.45	End Shut-In(2)
151	1889.96	113.93	Final Hydro-static

Recovery

Length (ft)	Description	Volume (bbl)
5.00	mud 100m	0.02

* Recovery from multiple tests

Gas Rates

Choke (inches)	Pressure (psig)	Gas Rate (Mcf/d)



**TRILOBITE
TESTING, INC.**

DRILL STEM TEST REPORT

FLUID SUMMARY

Shakespeare Oil Co., Inc.

S2-16s-31w Scott, KS

202 W Main St.
Salem, IL 62881

York #1-2

Job Ticket: 53038

DST#: 3

ATTN: Tim Priest

Test Start: 2013.08.19 @ 08:23:00

Mud and Cushion Information

Mud Type: Gel Chem

Cushion Type:

Oil API:

deg API

Mud Weight: 9.00 lb/gal

Cushion Length:

ft

Water Salinity:

ppm

Viscosity: 50.00 sec/qt

Cushion Volume:

bbbl

Water Loss: 8.79 in³

Gas Cushion Type:

Resistivity: ohm.m

Gas Cushion Pressure:

psig

Salinity: 3000.00 ppm

Filter Cake: 1.00 inches

Recovery Information

Recovery Table

Length ft	Description	Volume bbl
5.00	mud 100m	0.025

Total Length: 5.00 ft Total Volume: 0.025 bbl

Num Fluid Samples: 0

Num Gas Bombs: 0

Serial #:

Laboratory Name:

Laboratory Location:

Recovery Comments:

Serial #: 8018

Inside

Shakespeare Oil Co., Inc.

York #1-2

DST Test Number: 3

Pressure vs. Time

