



**TRILOBITE  
TESTING, INC.**

# DRILL STEM TEST REPORT

Shakespeare Oil Co., Inc.

**S2-16s-31w Scott, KS**

202 W Main St.  
Salem, IL 62881

**York #1-2**

Job Ticket: 53039

**DST#: 4**

ATTN: Tim Priest

Test Start: 2013.08.20 @ 05:37:00

## GENERAL INFORMATION:

Formation: **Lansing "H"**

Deviated: No Whipstock: ft (KB)

Time Tool Opened: 08:17:00

Time Test Ended: 14:00:20

Test Type: Conventional Bottom Hole (Reset)

Tester: Cornelio Landa III

Unit No: 62

**Interval: 4094.00 ft (KB) To 4130.00 ft (KB) (TVD)**

Reference Elevations: 2876.00 ft (KB)

Total Depth: 4130.00 ft (KB) (TVD)

2866.00 ft (CF)

Hole Diameter: 7.88 inches Hole Condition: Good

KB to GR/CF: 10.00 ft

**Serial #: 8018 Inside**

Press @ Run Depth: 82.30 psig @ 4098.00 ft (KB)

Capacity: 8000.00 psig

Start Date: 2013.08.20 End Date: 2013.08.20

Last Calib.: 2013.08.20

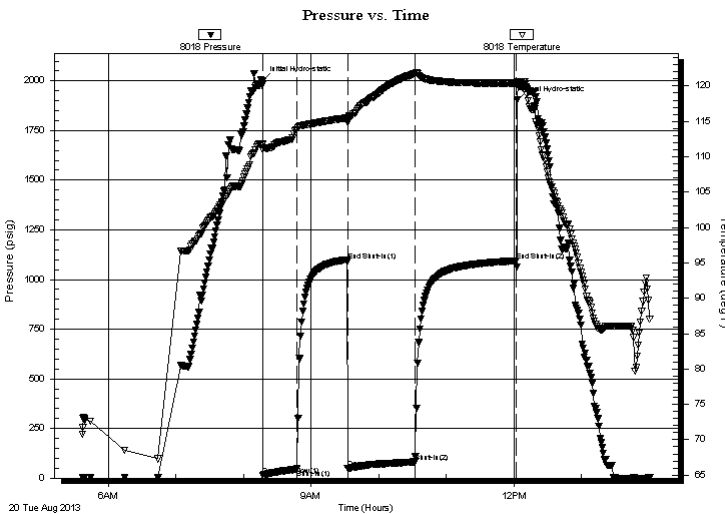
Start Time: 05:37:02 End Time: 14:00:20

Time On Btm: 2013.08.20 @ 08:16:50

Time Off Btm: 2013.08.20 @ 12:02:50

**TEST COMMENT:** IF: 2 1/2 in. of blow  
IS: Bled off in 1 min. - No return  
FF: Surface blow after 5 min. open-built to 3 1/2 in. of blow  
FS: Bled off in 2 1/2 min. - No return

## PRESSURE SUMMARY



Time (Min.)	Pressure (psig)	Temp (deg F)	Annotation
0	1999.99	111.77	Initial Hydro-static
1	15.36	111.05	Open To Flow (1)
31	46.12	113.86	Shut-In(1)
76	1092.64	115.49	End Shut-In(1)
76	49.72	114.84	Open To Flow (2)
136	82.30	121.79	Shut-In(2)
225	1094.34	120.42	End Shut-In(2)
226	1902.65	120.63	Final Hydro-static

## Recovery

Length (ft)	Description	Volume (bbl)
60.00	Mw 30m 70w	0.30
60.00	Om 15o 85m	0.30
30.00	Om 15o 85m	0.42
0.00	Rw .18 @ 87 degrees 28000 ppm	0.00

\* Recovery from multiple tests

## Gas Rates

	Choke (inches)	Pressure (psig)	Gas Rate (Mcf/d)



**TRILOBITE  
TESTING, INC.**

# DRILL STEM TEST REPORT

**FLUID SUMMARY**

Shakespeare Oil Co., Inc.

**S2-16s-31w Scott, KS**

202 W Main St.  
Salem, IL 62881

**York #1-2**

Job Ticket: 53039

**DST#: 4**

ATTN: Tim Priest

Test Start: 2013.08.20 @ 05:37:00

## Mud and Cushion Information

Mud Type: Gel Chem

Cushion Type:

Oil API:

deg API

Mud Weight: 9.00 lb/gal

Cushion Length:

ft

Water Salinity:

28000 ppm

Viscosity: 52.00 sec/qt

Cushion Volume:

bbbl

Water Loss: 9.19 in<sup>3</sup>

Gas Cushion Type:

Resistivity: ohm.m

Gas Cushion Pressure:

psig

Salinity: 4000.00 ppm

Filter Cake: 1.00 inches

## Recovery Information

Recovery Table

Length ft	Description	Volume bbbl
60.00	Mw 30m 70w	0.295
60.00	Om 15o 85m	0.304
30.00	Om 15o 85m	0.421
0.00	Rw .18 @ 87 degrees 28000 ppm	0.000

Total Length: 150.00 ft

Total Volume: 1.020 bbl

Num Fluid Samples: 0

Num Gas Bombs: 0

Serial #:

Laboratory Name:

Laboratory Location:

Recovery Comments:

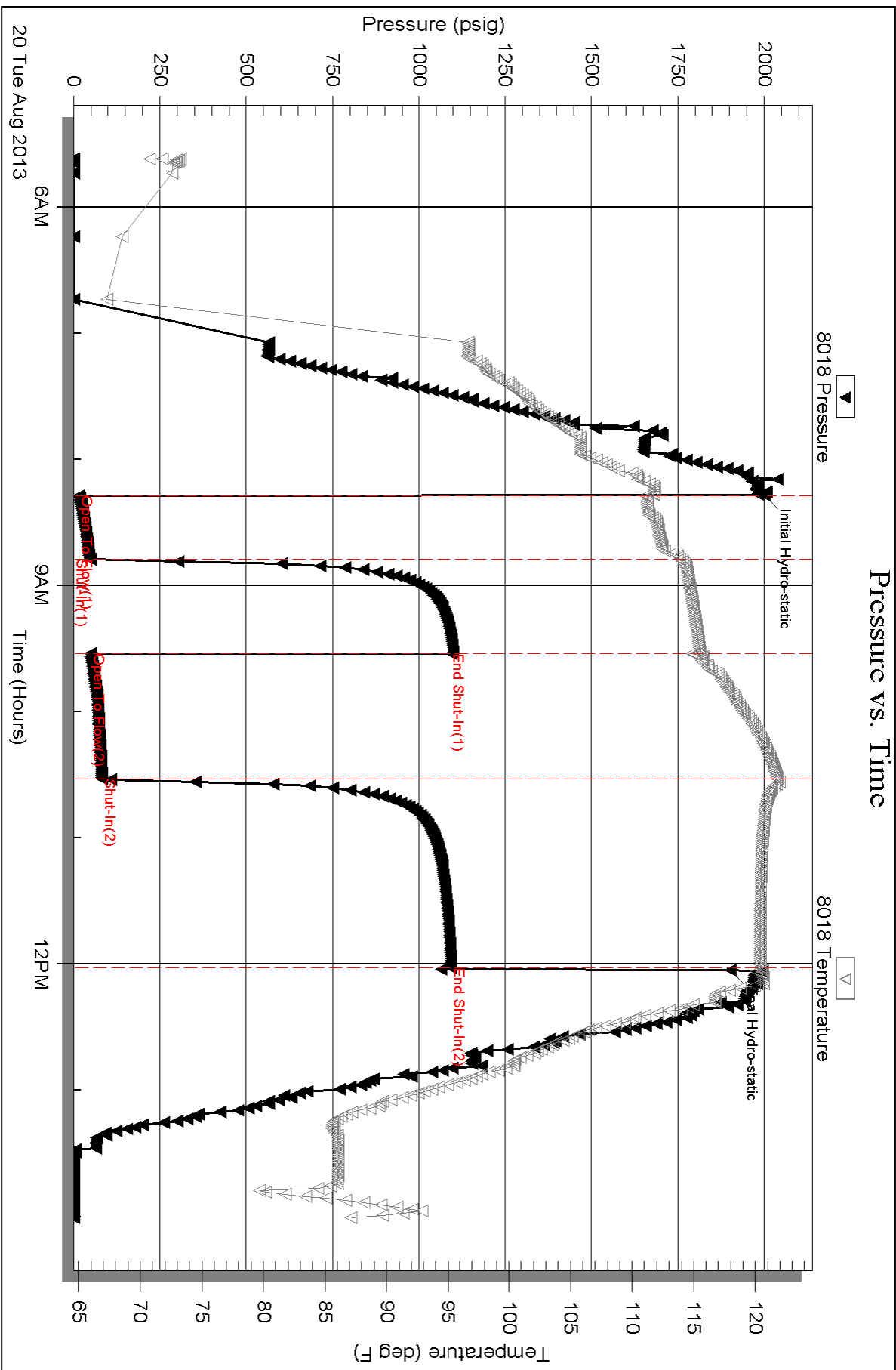
Serial #: 8018

Inside

Shakespeare Oil Co., Inc.

York #1-2

DST Test Number: 4



Triobite Testing, Inc

Ref. No: 53039

Printed: 2013.08.20 @ 14:48:24