



TRILOBITE TESTING, INC.

DRILL STEM TEST REPORT

Shakespeare Oil Co., Inc.

S2-16s-31w Scott, KS

202 W Main St.
Salem, IL 62881

York #1-2

Job Ticket: 53040

DST#: 5

ATTN: Tim Priest

Test Start: 2013.08.21 @ 00:30:00

GENERAL INFORMATION:

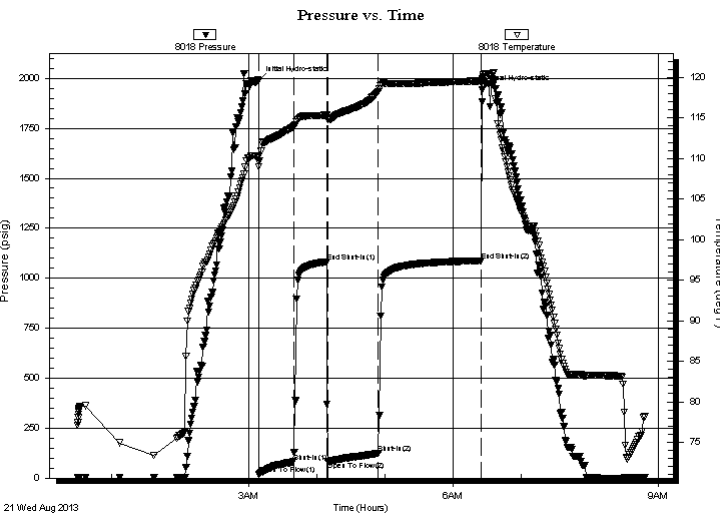
Formation: **Lkc "I"**
 Deviated: No Whipstock: ft (KB)
 Test Type: Conventional Bottom Hole (Reset)
 Time Tool Opened: 03:09:10 Tester: Cornelio Landa III (
 Time Test Ended: 08:49:09 Unit No: 62
 Interval: **4124.00 ft (KB) To 4160.00 ft (KB) (TVD)** Reference Elevations: 2876.00 ft (KB)
 Total Depth: 4160.00 ft (KB) (TVD) 2866.00 ft (CF)
 Hole Diameter: 7.88 inches Hole Condition: Fair KB to GR/CF: 10.00 ft

Serial #: 8018

Inside

Press @ RunDepth: 125.51 psig @ 4128.00 ft (KB) Capacity: 8000.00 psig
 Start Date: 2013.08.21 End Date: 2013.08.21 Last Calib.: 2013.08.21
 Start Time: 00:30:02 End Time: 08:49:10 Time On Btm: 2013.08.21 @ 03:09:00
 Time Off Btm: 2013.08.21 @ 06:25:30

TEST COMMENT: IF: B.o.b. in 17 min.
 IS: Bled off in 3 1/2 mins.- Surface blow back after 2 min. open-died in 8 min.
 FF: B.o.b. in 14 mins.
 FS: Bled off in 3 1/2 mins.- Surface blow back after 2 min. open-built to 1/2 in.



PRESSURE SUMMARY

Time (Min.)	Pressure (psig)	Temp (deg F)	Annotation
0	1989.46	110.20	Initial Hydro-static
1	17.28	108.99	Open To Flow (1)
31	81.21	113.92	Shut-In(1)
61	1082.43	115.35	End Shut-In(1)
61	84.57	114.87	Open To Flow (2)
106	125.51	118.26	Shut-In(2)
196	1087.74	119.54	End Shut-In(2)
197	1941.50	119.74	Final Hydro-static

Recovery

Length (ft)	Description	Volume (bbl)
60.00	Gmo 10g 20m 70o	0.30
60.00	Go 30g 70o	0.30
120.00	Go 30g 70o	1.68
60.00	Go 50g 50o	0.84
0.00	360 GIP	0.00

* Recovery from multiple tests

Gas Rates

Choke (inches)	Pressure (psig)	Gas Rate (Mcf/d)



**TRILOBITE
TESTING, INC.**

DRILL STEM TEST REPORT

FLUID SUMMARY

Shakespeare Oil Co., Inc.

S2-16s-31w Scott, KS

202 W Main St.
Salem, IL 62881

York #1-2

Job Ticket: 53040

DST#: 5

ATTN: Tim Priest

Test Start: 2013.08.21 @ 00:30:00

Mud and Cushion Information

Mud Type: Gel Chem

Cushion Type:

Oil API:

36 deg API

Mud Weight: 9.00 lb/gal

Cushion Length:

ft

Water Salinity:

ppm

Viscosity: 56.00 sec/qt

Cushion Volume:

bbbl

Water Loss: 7.20 in³

Gas Cushion Type:

Resistivity: ohm.m

Gas Cushion Pressure:

psig

Salinity: 2400.00 ppm

Filter Cake: 1.00 inches

Recovery Information

Recovery Table

Length ft	Description	Volume bbbl
60.00	Gmo 10g 20m 70o	0.295
60.00	Go 30g 70o	0.304
120.00	Go 30g 70o	1.683
60.00	Go 50g 50o	0.842
0.00	360 GIP	0.000

Total Length: 300.00 ft Total Volume: 3.124 bbl

Num Fluid Samples: 0

Num Gas Bombs: 0

Serial #:

Laboratory Name:

Laboratory Location:

Recovery Comments: 36 Gravity

Serial #: 8018

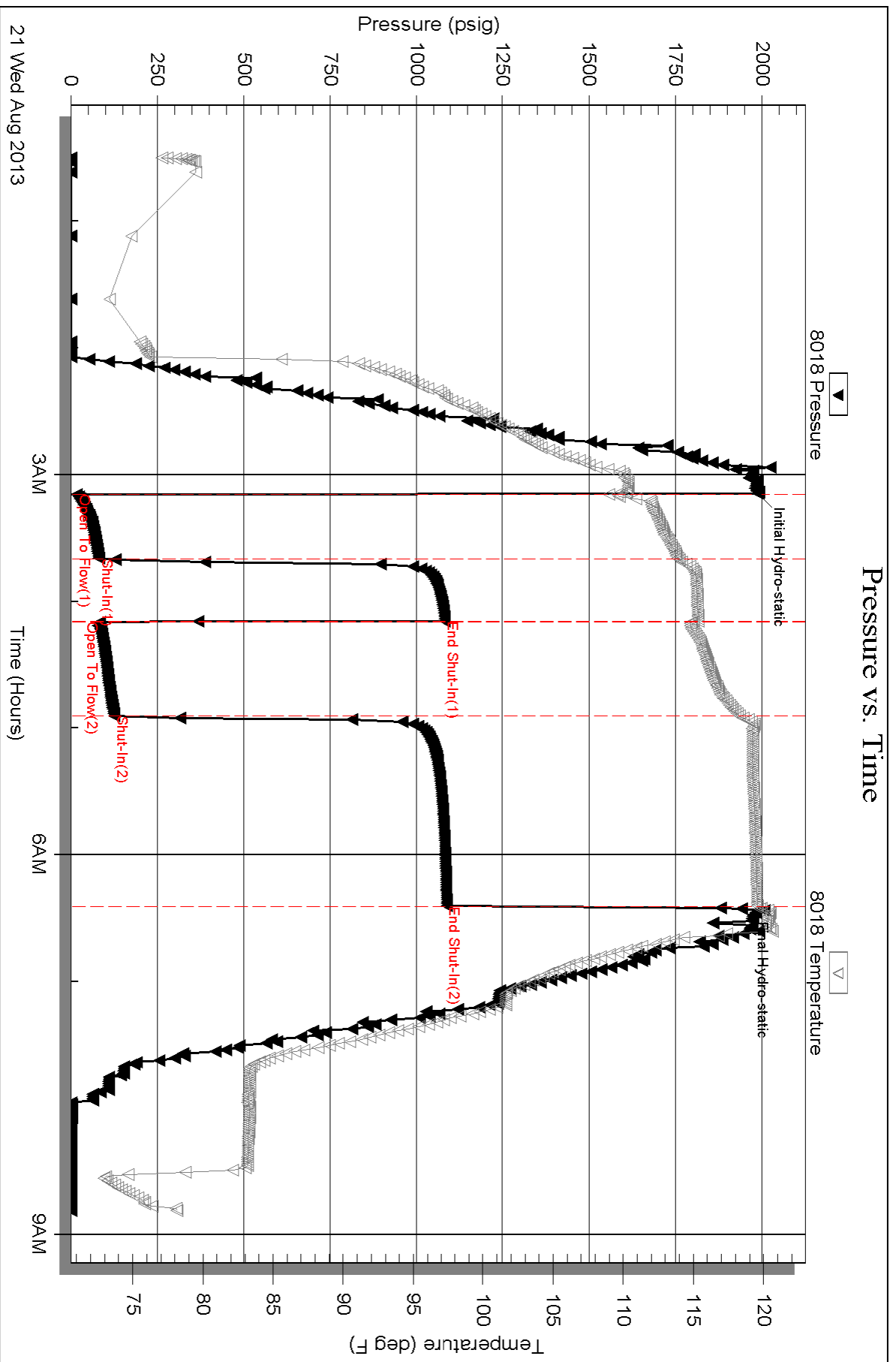
Inside

Shakespeare Oil Co., Inc.

York #1-2

DST Test Number: 5

Pressure vs. Time



Triobite Testing, Inc

Ref. No: 53040

Printed: 2013.08.21 @ 09:23:00