



DRILL STEM TEST REPORT

Prepared For: **Shelby Resources**

2717 Canal Blvd. Hays Kansas 67601

ATTN: Jeremy Schwartz

Schlessiger Cattle

2-18s-14w-Barton

Start Date: 2013.05.24 @ 07:50:00

End Date: 2013.05.24 @ 18:52:00

Job Ticket #: 18381 DST #: 4

Superior Testers Enterprises LLC
PO Box 138 Great Bend KS 67530
1-800-792-6902

Printed: 2013.05.24 @ 20:08:59



DRILL STEM TEST REPORT

Shelby Resources
 2717 Canal Blvd. Hays Kansas 67601
 ATTN: Jeremy Schwartz

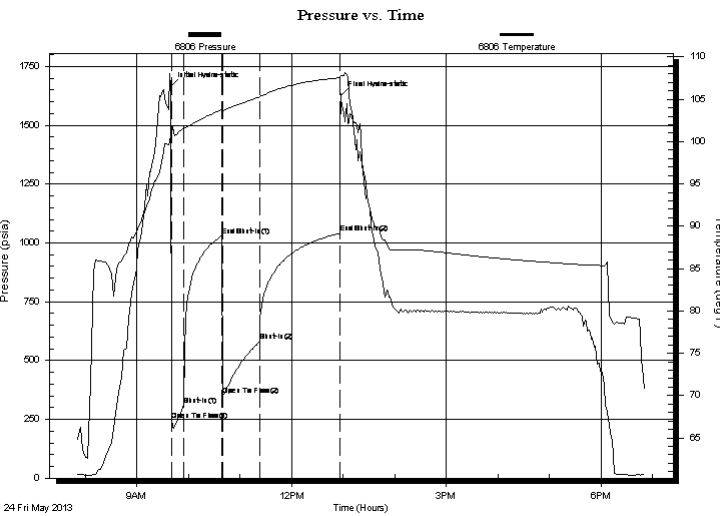
2-18s-14w-Barton
Schlessiger Cattle
 Job Ticket: 18381 **DST#: 4**
 Test Start: 2013.05.24 @ 07:50:00

GENERAL INFORMATION:

Formation: **Arbuckle**
 Deviated: No Whipstock: ft (KB)
 Test Type: Conventional Bottom Hole (Initial)
 Time Tool Opened: 09:40:00 Tester: Dustin Ellis
 Time Test Ended: 18:52:00 Unit No: 3315-Great Bend-30
 Interval: **3294.00 ft (KB) To 3335.00 ft (KB) (TVD)** Reference Elevations: 1842.00 ft (KB)
 Total Depth: 3335.00 ft (KB) (TVD) 1833.00 ft (CF)
 Hole Diameter: 7.88 inches Hole Condition: Fair KB to GR/CF: 9.00 ft

Serial #: 6806 Outside
 Press@RunDepth: 582.28 psia @ 3332.00 ft (KB) Capacity: 5000.00 psia
 Start Date: 2013.05.24 End Date: 2013.05.24 Last Calib.: 1899.12.30
 Start Time: 07:50:00 End Time: 18:52:00 Time On Btm: 2013.05.24 @ 09:39:30
 Time Off Btm: 2013.05.24 @ 12:57:30

TEST COMMENT: 1st Open 15 minutes Strong blow built to the bottom of a 5 gallon bucket of water in 2 minutes.
 1st Shut in 45 minutes Yes blow back
 2nd Open 45 minutes Strong blow built to the bottom of a 5 gallon bucket of water in 3 minutes.
 2nd Shut in 90 minutes No blow back.



PRESSURE SUMMARY

Time (Min.)	Pressure (psia)	Temp (deg F)	Annotation
0	1666.25	100.65	Initial Hydro-static
1	248.55	100.78	Open To Flow (1)
15	308.10	101.54	Shut-In(1)
60	1029.55	103.75	End Shut-In(1)
61	351.41	103.67	Open To Flow (2)
104	582.28	105.28	Shut-In(2)
197	1040.79	107.53	End Shut-In(2)
198	1627.68	107.74	Final Hydro-static

Recovery

Length (ft)	Description	Volume (bbl)
1344.00	Clean gassy oil	16.33
0.00	Oil 95% Mud 5%	0.00
0.00	Gravity of oil 36 Corrected.	0.00
124.00	Slight mud cut oil 95%Oil 5%mud	1.74
0.00	122 Feet of gas in pipe	0.00

Gas Rates

Choke (inches)	Pressure (psia)	Gas Rate (Mcf/d)



DRILL STEM TEST REPORT

Shelby Resources
 2717 Canal Blvd. Hays Kansas 67601
 ATTN: Jeremy Schwartz

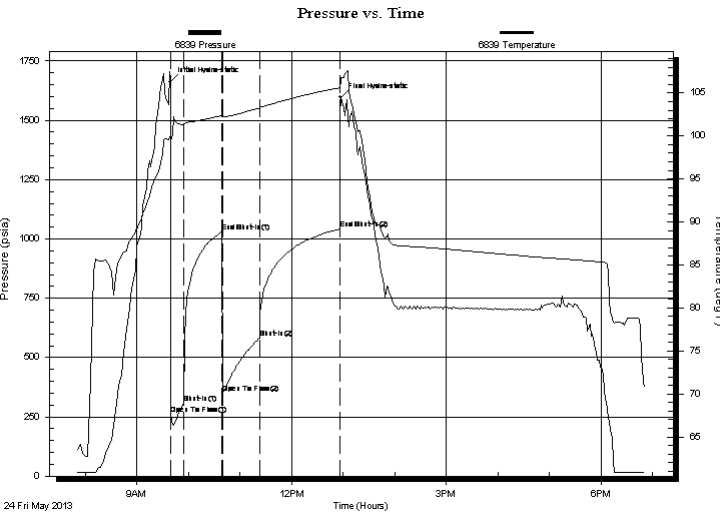
2-18s-14w-Barton
Schlessiger Cattle
 Job Ticket: 18381 **DST#: 4**
 Test Start: 2013.05.24 @ 07:50:00

GENERAL INFORMATION:

Formation: **Arbuckle**
 Deviated: No Whipstock: ft (KB)
 Test Type: Conventional Bottom Hole (Initial)
 Time Tool Opened: 09:40:00 Tester: Dustin Ellis
 Time Test Ended: 18:52:00 Unit No: 3315-Great Bend-30
 Interval: **3294.00 ft (KB) To 3335.00 ft (KB) (TVD)** Reference Elevations: 1842.00 ft (KB)
 Total Depth: 3335.00 ft (KB) (TVD) 1833.00 ft (CF)
 Hole Diameter: 7.88 inches Hole Condition: Fair KB to GR/CF: 9.00 ft

Serial #: 6839 Inside
 Press@RunDepth: 1041.91 psia @ 3331.00 ft (KB) Capacity: 5000.00 psia
 Start Date: 2013.05.24 End Date: 2013.05.24 Last Calib.: 2013.05.24
 Start Time: 07:50:00 End Time: 18:52:00 Time On Btm: 2013.05.24 @ 09:39:00
 Time Off Btm: 2013.05.24 @ 12:57:00

TEST COMMENT: 1st Open 15 minutes Strong blow built to the bottom of a 5 gallon bucket of water in 2 minutes.
 1st Shut in 45 minutes Yes blow back
 2nd Open 45 minutes Strong blow built to the bottom of a 5 gallon bucket of water in 3 minutes.
 2nd Shut in 90 minutes No blow back.



PRESSURE SUMMARY

Time (Min.)	Pressure (psia)	Temp (deg F)	Annotation
0	1662.79	100.10	Initial Hydro-static
1	260.47	99.45	Open To Flow (1)
16	307.27	101.38	Shut-In(1)
60	1030.82	102.39	End Shut-In(1)
61	350.44	102.19	Open To Flow (2)
104	582.28	103.24	Shut-In(2)
197	1041.91	105.60	End Shut-In(2)
198	1597.59	106.21	Final Hydro-static

Recovery

Length (ft)	Description	Volume (bbl)
1344.00	Clean gassy oil	16.33
0.00	Oil 95% Mud 5%	0.00
0.00	Gravity of oil 36 Corrected.	0.00
124.00	Slight mud cut oil 95%Oil 5%mud	1.74
0.00	122 Feet of gas in pipe	0.00

Gas Rates

Choke (inches)	Pressure (psia)	Gas Rate (Mcf/d)
----------------	-----------------	------------------



DRILL STEM TEST REPORT

TOOL DIAGRAM

Shelby Resources
 2717 Canal Blvd. Hays Kansas 67601
 ATTN: Jeremy Schwartz

2-18s-14w-Barton
Schlessiger Cattle
 Job Ticket: 18381 **DST#: 4**
 Test Start: 2013.05.24 @ 07:50:00

Tool Information

Drill Pipe:	Length: 3011.00 ft	Diameter: 3.80 inches	Volume: 42.24 bbl	Tool Weight: 2000.00 lb
Heavy Wt. Pipe:	Length: 0.00 ft	Diameter: 0.00 inches	Volume: 0.00 bbl	Weight set on Packer: 20000.00 lb
Drill Collar:	Length: 276.44 ft	Diameter: 2.25 inches	Volume: 1.36 bbl	Weight to Pull Loose: 78000.00 lb
			<u>Total Volume: 43.60 bbl</u>	Tool Chased 0.00 ft
Drill Pipe Above KB:	21.44 ft			String Weight: Initial 69000.00 lb
Depth to Top Packer:	3294.00 ft			Final 75000.00 lb
Depth to Bottom Packer:	ft			
Interval between Packers:	41.00 ft			
Tool Length:	69.00 ft			
Number of Packers:	2	Diameter: 6.75 inches		

Tool Comments:

Tool Description	Length (ft)	Serial No.	Position	Depth (ft)	Accum. Lengths
Shut-In Tool	5.00			3271.00	
Hydraulic Tool	5.00			3276.00	
Safety Joint	2.00			3278.00	
Jars	6.00			3284.00	
Packer	5.00			3289.00	28.00 Bottom Of Top Packer
Packer	5.00			3294.00	
Anchor	36.00			3330.00	
Recorder	1.00	6839	Inside	3331.00	
Recorder	1.00	6806	Outside	3332.00	
Bullnose	3.00			3335.00	41.00 Bottom Packers & Anchor
Total Tool Length:	69.00				



DRILL STEM TEST REPORT

FLUID SUMMARY

Shelby Resources
 2717 Canal Blvd. Hays Kansas 67601
 ATTN: Jeremy Schwartz

2-18s-14w-Barton
Schlessiger Cattle
 Job Ticket: 18381 **DST#: 4**
 Test Start: 2013.05.24 @ 07:50:00

Mud and Cushion Information

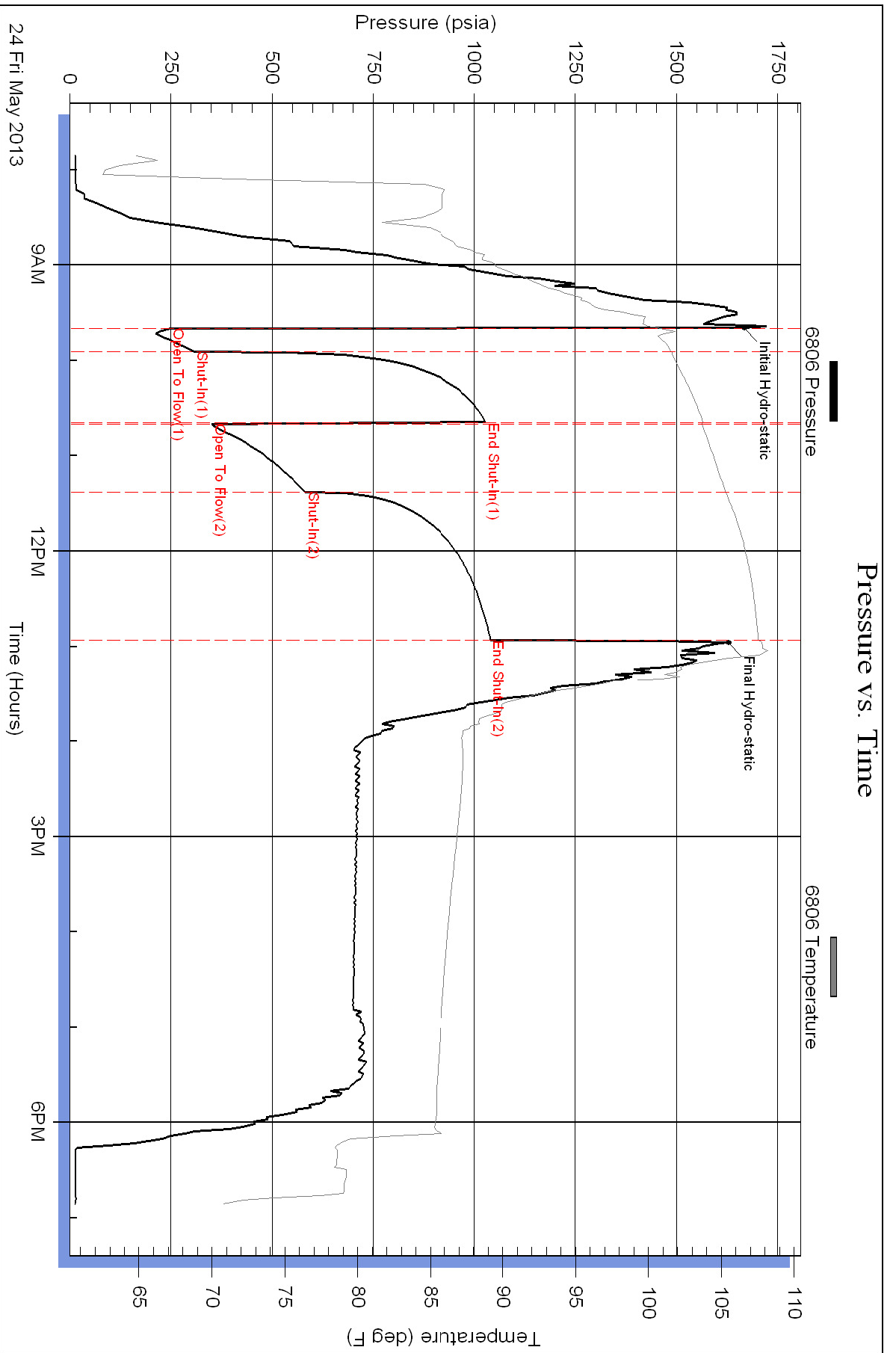
Mud Type: Gel Chem	Cushion Type:	Oil API:	deg API
Mud Weight: 9.00 lb/gal	Cushion Length: ft	Water Salinity:	ppm
Viscosity: 65.00 sec/qt	Cushion Volume: bbl		
Water Loss: 8.80 in ³	Gas Cushion Type:		
Resistivity: ohm.m	Gas Cushion Pressure: psia		
Salinity: 5900.00 ppm			
Filter Cake: 1.00 inches			

Recovery Information

Recovery Table

Length ft	Description	Volume bbl
1344.00	Clean gassy oil	16.335
0.00	Oil 95% Mud 5%	0.000
0.00	Gravity of oil 36 Corrected.	0.000
124.00	Slight mud cut oil 95%Oil 5%mud	1.739
0.00	122 Feet of gas in pipe	0.000

Total Length: 1468.00 ft Total Volume: 18.074 bbl
 Num Fluid Samples: 0 Num Gas Bombs: 0 Serial #:
 Laboratory Name: Laboratory Location:
 Recovery Comments:



Pressure vs. Time

