



## DRILL STEM TEST REPORT

Prepared For: **Shelby Resources LLC**

2717 Canal Boulevard  
Suite C  
Hays, Kansas 67601

ATTN: Jeremy Schwartz

**Nancy #1-17**

**17/17S/13W/Barton**

Start Date: 2013.08.21 @ 05:07:00

End Date: 2013.08.21 @ 09:16:00

Job Ticket #: 17607                      DST #: 3

Superior Testers Enterprises LLC  
PO Box 138 Great Bend KS 67530  
1-800-792-6902

Printed: 2013.08.21 @ 09:30:41

Shelby Resources LLC

17/17S/13W/Barton

Nancy #1-17

DST # 3

Lansing/Kansas City

2013.08.21



# DRILL STEM TEST REPORT

Shelby Resources LLC  
 2717 Canal Boulevard  
 Suite C  
 Hays, Kansas 67601  
 ATTN: Jeremy Schwartz

**17/17S/13W/Barton**  
**Nancy #1-17**  
 Job Ticket: 17607 **DST#: 3**  
 Test Start: 2013.08.21 @ 05:07:00

## GENERAL INFORMATION:

Formation: **Lansing/Kansas City**  
 Deviated: No Whipstock: ft (KB)  
 Time Tool Opened: 06:23:00  
 Time Test Ended: 09:16:00  
 Interval: **3335.00 ft (KB) To 3452.00 ft (KB) (TVD)**  
 Total Depth: 3452.00 ft (KB) (TVD)  
 Hole Diameter: 7.80 inches Hole Condition: Fair  
 Test Type: Conventional Bottom Hole (Initial)  
 Tester: Ken Swinney  
 Unit No: 3325 Great Bend/32  
 Reference Elevations: 1992.00 ft (KB)  
 1979.00 ft (CF)  
 KB to GR/CF: 13.00 ft

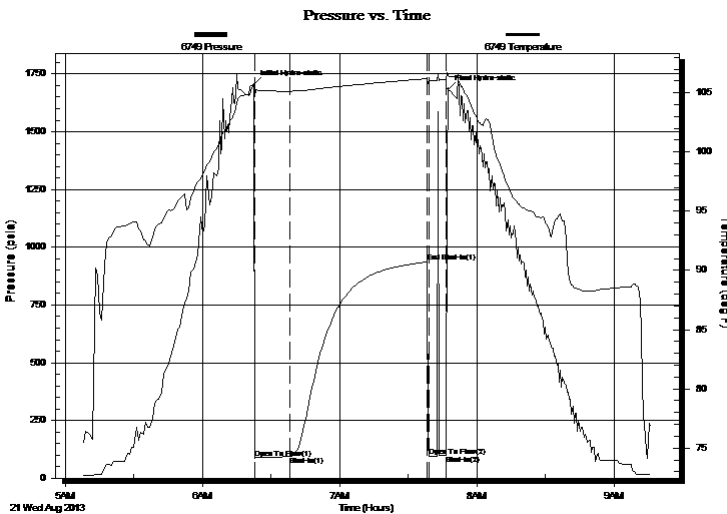
## Serial #: 6749

Inside

Press @ Run Depth: 92.58 psia @ 3448.08 ft (KB) Capacity: 5000.00 psia  
 Start Date: 2013.08.21 End Date: 2013.08.21 Last Calib.: 2013.08.21  
 Start Time: 05:07:00 End Time: 09:16:00 Time On Btm: 2013.08.21 @ 06:22:30  
 Time Off Btm: 2013.08.21 @ 07:47:30

TEST COMMENT: 1ST Open 15 Minutes/Weak blow /Blow built to 1/2 inch  
 1ST Shut In 60 Minutes/No blow back  
 2ND Open 10 Minutes/Dead no blow /Flush tool no help/Pull test

## PRESSURE SUMMARY



Time (Min.)	Pressure (psia)	Temp (deg F)	Annotation
0	1702.10	105.59	Initial Hydro-static
1	86.25	104.70	Open To Flow (1)
16	92.58	105.13	Shut-In(1)
76	935.84	106.19	End Shut-In(1)
77	93.57	106.03	Open To Flow (2)
84	99.04	106.13	Shut-In(2)
85	1684.13	106.48	Final Hydro-static

## Recovery

Length (ft)	Description	Volume (bbl)
15.00	Mud 100%	0.07

## Gas Rates

Choke (inches)	Pressure (psia)	Gas Rate (Mcf/d)



# DRILL STEM TEST REPORT

Shelby Resources LLC  
 2717 Canal Boulevard  
 Suite C  
 Hays, Kansas 67601  
 ATTN: Jeremy Schwartz

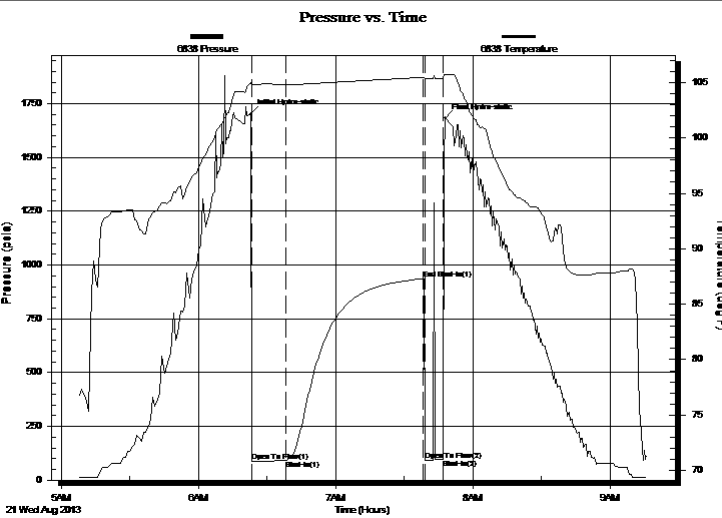
**17/17S/13W/Barton**  
**Nancy #1-17**  
 Job Ticket: 17607      **DST#: 3**  
 Test Start: 2013.08.21 @ 05:07:00

## GENERAL INFORMATION:

Formation: **Lansing/Kansas City**  
 Deviated: No Whipstock:      ft (KB)  
 Time Tool Opened: 06:23:00  
 Time Test Ended: 09:16:00  
 Interval: **3335.00 ft (KB) To 3452.00 ft (KB) (TVD)**  
 Total Depth: 3452.00 ft (KB) (TVD)  
 Hole Diameter: 7.80 inches Hole Condition: Fair  
 Test Type: Conventional Bottom Hole (Initial)  
 Tester: Ken Swinney  
 Unit No: 3325 Great Bend/32  
 Reference Elevations: 1992.00 ft (KB)  
 1979.00 ft (CF)  
 KB to GR/CF: 13.00 ft

**Serial #: 6838      Outside**  
 Press @ Run Depth: 936.73 psia @ 3449.08 ft (KB)      Capacity: 5000.00 psia  
 Start Date: 2013.08.21      End Date: 2013.08.21      Last Calib.: 2013.08.21  
 Start Time: 05:07:00      End Time: 09:16:00      Time On Btm: 2013.08.21 @ 06:23:00  
 Time Off Btm: 2013.08.21 @ 07:48:00

**TEST COMMENT:** 1ST Open 15 Minutes/Weak blow /Blow built to 1/2 inch  
 1ST Shut In 60 Minutes/No blow back  
 2ND Open 10 Minutes/Dead no blow /Flush tool no help/Pull test



PRESSURE SUMMARY			
Time (Min.)	Pressure (psia)	Temp (deg F)	Annotation
0	1703.31	104.99	Initial Hydro-static
1	86.56	104.78	Open To Flow (1)
15	90.78	104.84	Shut-In(1)
75	936.73	105.48	End Shut-In(1)
76	92.41	105.37	Open To Flow (2)
84	97.66	105.38	Shut-In(2)
85	1682.35	105.73	Final Hydro-static

Recovery		
Length (ft)	Description	Volume (bbl)
15.00	Mud 100%	0.07

Gas Rates			
	Choke (inches)	Pressure (psia)	Gas Rate (Mcf/d)



# DRILL STEM TEST REPORT

**TOOL DIAGRAM**

Shelby Resources LLC

**17/17S/13W/Barton**

2717 Canal Boulevard  
Suite C  
Hays, Kansas 67601  
ATTN: Jeremy Schwartz

**Nancy #1-17**

Job Ticket: 17607

**DST#: 3**

Test Start: 2013.08.21 @ 05:07:00

## Tool Information

Drill Pipe:	Length: 2993.00 ft	Diameter: 3.80 inches	Volume: 41.98 bbl	Tool Weight: 2000.00 lb
Heavy Wt. Pipe:	Length: 0.00 ft	Diameter: 0.00 inches	Volume: 0.00 bbl	Weight set on Packer: 20000.00 lb
Drill Collar:	Length: 330.00 ft	Diameter: 2.25 inches	Volume: 1.62 bbl	Weight to Pull Loose: 86000.00 lb
			Total Volume: 43.60 bbl	Tool Chased 0.00 ft
Drill Pipe Above KB:	15.00 ft			String Weight: Initial 70000.00 lb
Depth to Top Packer:	3335.00 ft			Final 70000.00 lb
Depth to Bottom Packer:	ft			
Interval between Packers:	117.08 ft			
Tool Length:	144.08 ft			
Number of Packers:	2	Diameter: 6.75 inches		

Tool Comments:

Tool Description	Length (ft)	Serial No.	Position	Depth (ft)	Accum. Lengths
------------------	-------------	------------	----------	------------	----------------

Shut In Tool	5.00			3313.00	
Hydraulic Tool	5.00			3318.00	
Jars	5.00			3323.00	
Safety Joint	2.00			3325.00	
Packer	5.00			3330.00	27.00 Bottom Of Top Packer
Packer	5.00			3335.00	
Perforations	5.00			3340.00	
Change Over Sub	0.75			3340.75	
Drill Pipe	95.58			3436.33	
Change Over Sub	0.75			3437.08	
Anchor	10.00			3447.08	
Recorder	1.00	6749	Inside	3448.08	
Recorder	1.00	6838	Outside	3449.08	
Bullnose	3.00			3452.08	117.08 Bottom Packers & Anchor

**Total Tool Length: 144.08**



# DRILL STEM TEST REPORT

## FLUID SUMMARY

Shelby Resources LLC  
2717 Canal Boulevard  
Suite C  
Hays, Kansas 67601  
ATTN: Jeremy Schwartz

**17/17S/13W/Barton**  
**Nancy #1-17**  
Job Ticket: 17607      **DST#: 3**  
Test Start: 2013.08.21 @ 05:07:00

### Mud and Cushion Information

Mud Type: Gel Chem	Cushion Type:	Oil API:	deg API
Mud Weight: 9.00 lb/gal	Cushion Length: ft	Water Salinity:	ppm
Viscosity: 60.00 sec/qt	Cushion Volume: bbl		
Water Loss: 8.80 in <sup>3</sup>	Gas Cushion Type:		
Resistivity: ohm.m	Gas Cushion Pressure: psia		
Salinity: 5800.00 ppm			
Filter Cake: 1.00 inches			

### Recovery Information

Recovery Table

Length ft	Description	Volume bbl
15.00	Mud 100%	0.074

Total Length: 15.00 ft      Total Volume: 0.074 bbl

Num Fluid Samples: 0

Num Gas Bombs: 0

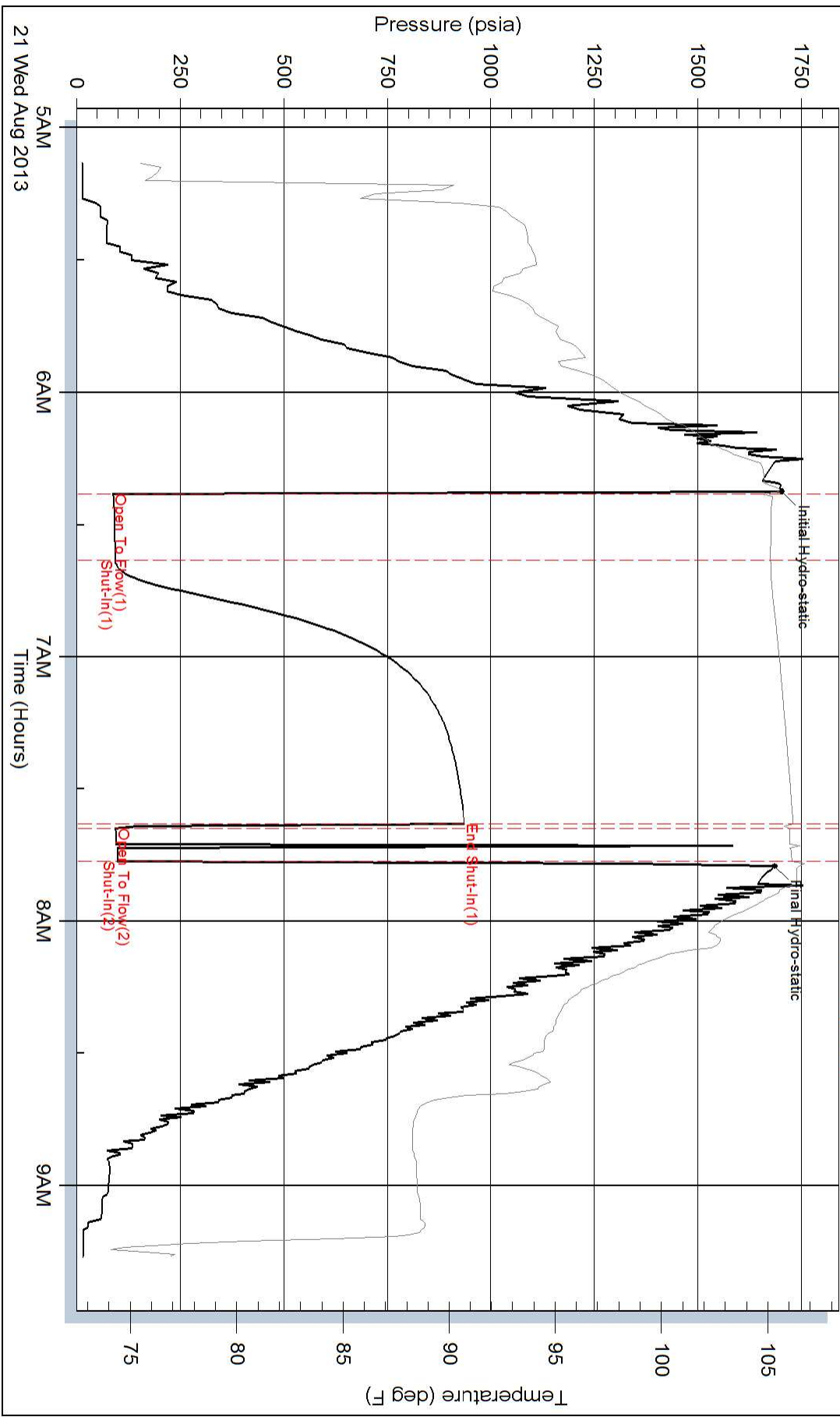
Serial #:

Laboratory Name:

Laboratory Location:

Recovery Comments:

### Pressure vs. Time



### Pressure vs. Time

