



TRILOBITE TESTING, INC.

DRILL STEM TEST REPORT

Pioneer Resources

25-14s-16w Ellis

80 Windmill Dr
Phillipsburg Ks 67661

Baumrucker #5

Job Ticket: 54816

DST#: 2

ATTN: Roger Wells/ Charlie

Test Start: 2013.09.25 @ 15:20:41

GENERAL INFORMATION:

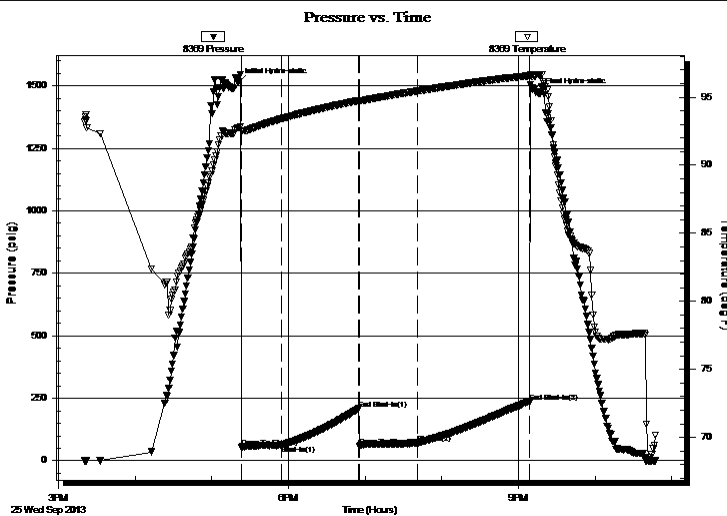
Formation: **Toronto-LKC "C"**
 Deviated: No Whipstock: ft (KB)
 Time Tool Opened: 17:23:21
 Time Test Ended: 22:48:05
 Interval: **3032.00 ft (KB) To 3137.00 ft (KB) (TVD)**
 Total Depth: 3137.00 ft (KB) (TVD)
 Hole Diameter: 7.85 inches Hole Condition: Fair
 Test Type: Conventional Bottom Hole (Reset)
 Tester: Ray Schwager
 Unit No: 70
 Reference Elevations: 1851.00 ft (KB)
 1846.00 ft (CF)
 KB to GR/CF: 5.00 ft

Serial #: 8369

Inside

Press @ Run Depth: 72.21 psig @ 3041.00 ft (KB) Capacity: 8000.00 psig
 Start Date: 2013.09.25 End Date: 2013.09.25 Last Calib.: 2013.09.25
 Start Time: 15:20:41 End Time: 22:48:05 Time On Btm: 2013.09.25 @ 17:21:06
 Time Off Btm: 2013.09.25 @ 21:15:35

TEST COMMENT: 30-IFP-vy w k surface bl thru-out
 60-ISIP-no bl
 15-FFP-w k bl , did in 40min started at 3/4"bl
 90-FSIP-no bl



PRESSURE SUMMARY

Time (Min.)	Pressure (psig)	Temp (deg F)	Annotation
0	1513.55	92.77	Initial Hydro-static
3	54.90	92.49	Open To Flow (1)
34	61.71	93.40	Shut-In(1)
94	207.85	94.75	End Shut-In(1)
95	59.10	94.71	Open To Flow (2)
140	72.21	95.44	Shut-In(2)
228	236.38	96.57	End Shut-In(2)
235	1471.86	96.65	Final Hydro-static

Recovery

Length (ft)	Description	Volume (bbl)
20.00	Oil Spotted mud	0.00

Gas Rates

Choke (inches)	Pressure (psig)	Gas Rate (Mcf/d)

* Recovery from multiple tests



**TRILOBITE
TESTING, INC.**

DRILL STEM TEST REPORT

FLUID SUMMARY

Pioneer Resources

25-14s-16w Ellis

80 Windmill Dr
Phillipsburg Ks 67661

Baumrucker #5

Job Ticket: 54816

DST#: 2

ATTN: Roger Wells/ Charlie

Test Start: 2013.09.25 @ 15:20:41

Mud and Cushion Information

Mud Type: Gel Chem

Cushion Type:

Oil API:

deg API

Mud Weight: 9.00 lb/gal

Cushion Length:

ft

Water Salinity:

ppm

Viscosity: 53.00 sec/qt

Cushion Volume:

bbbl

Water Loss: 7.18 in³

Gas Cushion Type:

Resistivity: ohm.m

Gas Cushion Pressure:

psig

Salinity: 5700.00 ppm

Filter Cake: 1.00 inches

Recovery Information

Recovery Table

Length ft	Description	Volume bbl
20.00	Oil Spotted mud	0.000

Total Length: 20.00 ft Total Volume: bbl

Num Fluid Samples: 0

Num Gas Bombs: 0

Serial #:

Laboratory Name:

Laboratory Location:

Recovery Comments:

