



DRILL STEM TEST REPORT

Prepared For: **Norstar Petroleum Inc**

88 Inverness Cir E Unit F104
Englewood, CO 80112

ATTN: Bob Elder

Wieland #1-13

13-11s-32w Logan,KS

Start Date: 2013.09.09 @ 10:20:40

End Date: 2013.09.09 @ 17:15:19

Job Ticket #: 52849 DST #: 1

Trilobite Testing, Inc
PO Box 362 Hays, KS 67601
ph: 785-625-4778 fax: 785-625-5620

Printed: 2013.09.13 @ 09:21:41



**TRILOBITE
TESTING, INC.**

DRILL STEM TEST REPORT

Norstar Petroleum Inc
88 Inverness Cir E Unit F104
Englewood, CO 80112
ATTN: Bob Elder

13-11s-32w Logan, KS
Wieland #1-13
Job Ticket: 52849 **DST#: 1**
Test Start: 2013.09.09 @ 10:20:40

GENERAL INFORMATION:

Formation: **B-C**
Deviated: No Whipstock: ft (KB) Test Type: Conventional Bottom Hole (Initial)
Time Tool Opened: 12:29:35 Tester: Shane McBride
Time Test Ended: 17:15:19 Unit No: 55
Interval: 4060.00 ft (KB) To 4100.00 ft (KB) (TVD) Reference Elevations: 3031.00 ft (KB)
Total Depth: 4100.00 ft (KB) (TVD) 3022.00 ft (CF)
Hole Diameter: 7.88 inches Hole Condition: Fair KB to GR/CF: 9.00 ft

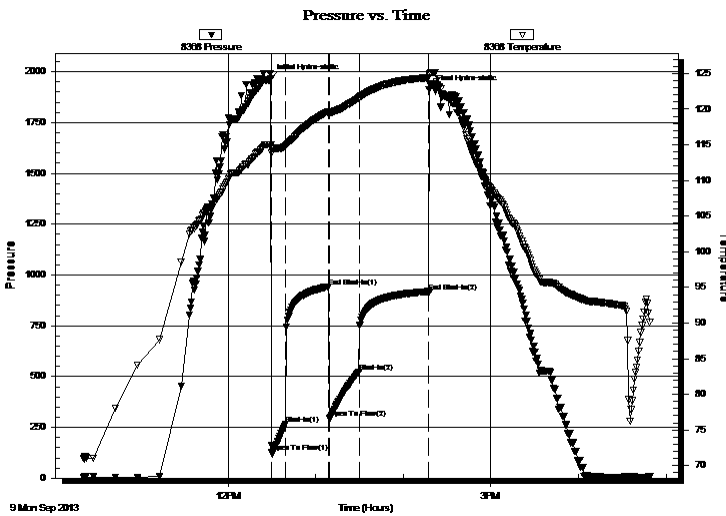
Serial #: 8368

Outside

Press @ Run Depth: 521.74 psig @ 4061.00 ft (KB) Capacity: 8000.00 psig
Start Date: 2013.09.09 End Date: 2013.09.09 Last Calib.: 2013.09.09
Start Time: 10:20:40 End Time: 16:49:19 Time On Btm: 2013.09.09 @ 12:29:05
Time Off Btm: 2013.09.09 @ 14:17:35

TEST COMMENT: B.O.B. in 2 1/2 min.
No return
B.O.B. in 4 min.
No return

PRESSURE SUMMARY



Time (Min.)	Pressure (psig)	Temp (deg F)	Annotation
0	1966.42	114.98	Initial Hydro-static
1	127.01	114.41	Open To Flow (1)
10	266.55	114.78	Shut-In(1)
40	942.19	119.64	End Shut-In(1)
40	295.15	119.38	Open To Flow (2)
61	521.74	121.56	Shut-In(2)
108	918.22	124.40	End Shut-In(2)
109	1912.71	124.82	Final Hydro-static

Recovery

Length (ft)	Description	Volume (bbl)
125.00	m c w w/oil spots 50m 50w	1.75
300.00	s m c w 20m 80w	4.21
660.00	water 100w	9.26

Gas Rates

Choke (inches)	Pressure (psig)	Gas Rate (Mcf/d)



**TRILOBITE
TESTING, INC.**

DRILL STEM TEST REPORT

TOOL DIAGRAM

Norstar Petroleum Inc
88 Inverness Cir E Unit F104
Englewood, CO 80112
ATTN: Bob Elder

13-11s-32w Logan,KS
Wieland #1-13
Job Ticket: 52849 **DST#: 1**
Test Start: 2013.09.09 @ 10:20:40

Tool Information

Drill Pipe:	Length: 4065.00 ft	Diameter: 3.80 inches	Volume: 57.02 bbl	Tool Weight: 1500.00 lb
Heavy Wt. Pipe:	Length: 0.00 ft	Diameter: 0.00 inches	Volume: 0.00 bbl	Weight set on Packer: 25000.00 lb
Drill Collar:	Length: 0.00 ft	Diameter: 0.00 inches	Volume: 0.00 bbl	Weight to Pull Loose: 90000.00 lb
			<u>Total Volume: 57.02 bbl</u>	Tool Chased 0.00 ft
Drill Pipe Above KB:	33.00 ft			String Weight: Initial 65000.00 lb
Depth to Top Packer:	4060.00 ft			Final 70000.00 lb
Depth to Bottom Packer:	ft			
Interval between Packers:	40.00 ft			
Tool Length:	68.00 ft			
Number of Packers:	2	Diameter: 6.75 inches		

Tool Comments:

Tool Description	Length (ft)	Serial No.	Position	Depth (ft)	Accum. Lengths
------------------	-------------	------------	----------	------------	----------------

Tool Description	Length (ft)	Serial No.	Position	Depth (ft)	Accum. Lengths
Change Over Sub	1.00			4033.00	
Shut In Tool	5.00			4038.00	
Hydraulic tool	5.00			4043.00	
Jars	5.00			4048.00	
Safety Joint	3.00			4051.00	
Packer	5.00			4056.00	28.00 Bottom Of Top Packer
Packer	4.00			4060.00	
Stubb	1.00			4061.00	
Recorder	0.00	6667	Inside	4061.00	
Recorder	0.00	8368	Outside	4061.00	
Perforations	34.00			4095.00	
Bullnose	5.00			4100.00	40.00 Bottom Packers & Anchor

Total Tool Length: 68.00



**TRILOBITE
TESTING, INC.**

DRILL STEM TEST REPORT

FLUID SUMMARY

Norstar Petroleum Inc

13-11s-32w Logan,KS

88 Inverness Cir E Unit F104
Englewood, CO 80112

Wieland #1-13

Job Ticket: 52849

DST#: 1

ATTN: Bob Elder

Test Start: 2013.09.09 @ 10:20:40

Mud and Cushion Information

Mud Type: Gel Chem

Cushion Type:

Oil API:

0 deg API

Mud Weight: 9.00 lb/gal

Cushion Length:

ft

Water Salinity:

50000 ppm

Viscosity: 53.00 sec/qt

Cushion Volume:

bbbl

Water Loss: 8.71 in³

Gas Cushion Type:

Resistivity: 0.00 ohm.m

Gas Cushion Pressure:

psig

Salinity: 1500.00 ppm

Filter Cake: 1.00 inches

Recovery Information

Recovery Table

Length ft	Description	Volume bbl
125.00	m c w w/oil spots 50m 50w	1.753
300.00	s m c w 20m 80w	4.208
660.00	water 100w	9.258

Total Length: 1085.00 ft Total Volume: 15.219 bbl

Num Fluid Samples: 0

Num Gas Bombs: 0

Serial #:

Laboratory Name:

Laboratory Location:

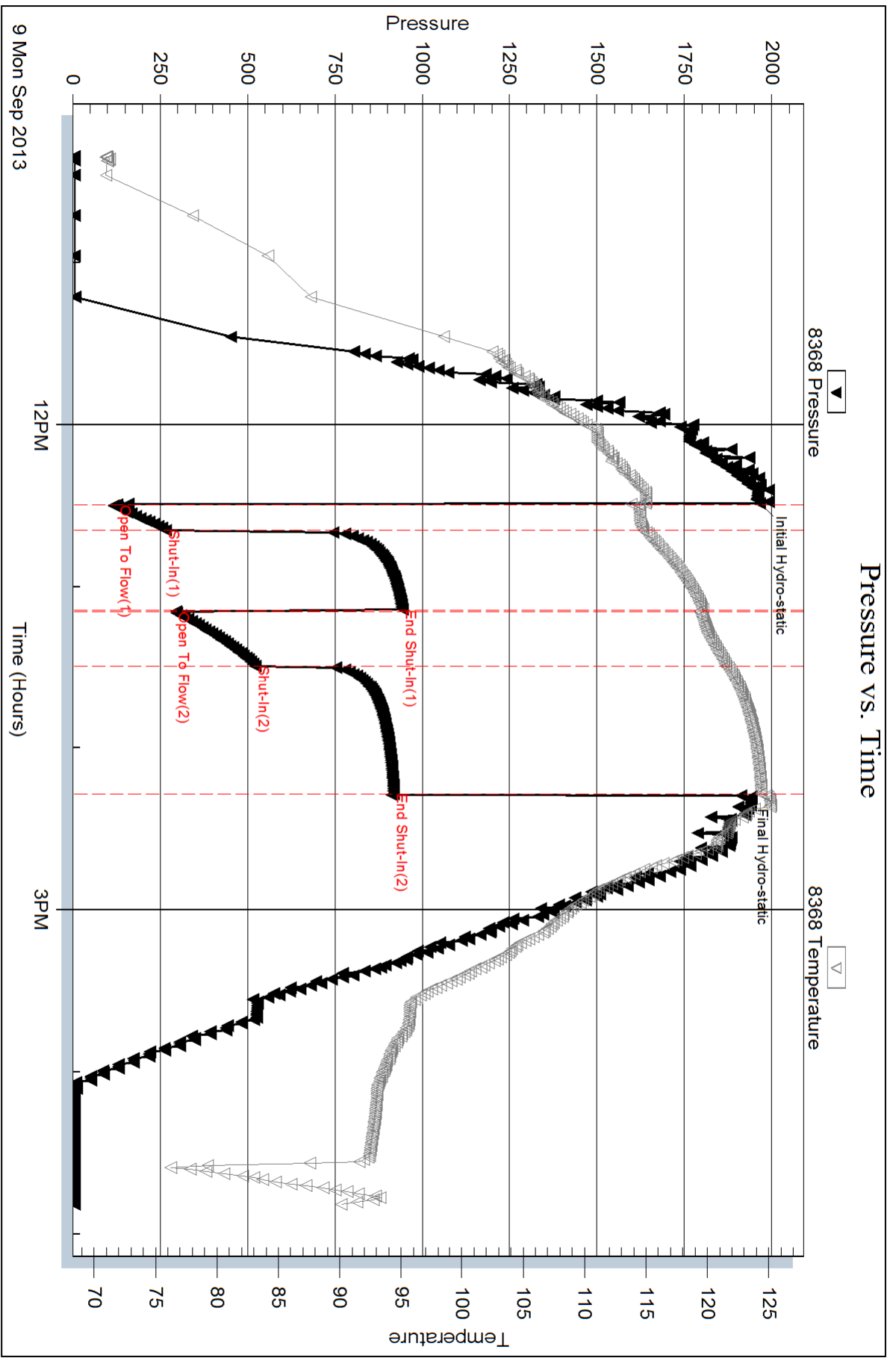
Recovery Comments: rw .130 @ 75* = 50,000 chlor

Serial #: 8368

Outside Norstar Petroleum Inc

Welland #1-13

DST Test Number: 1



Trilobite Testing, Inc

Ref. No: 52849

Printed: 2013.09.13 @ 09:21:43

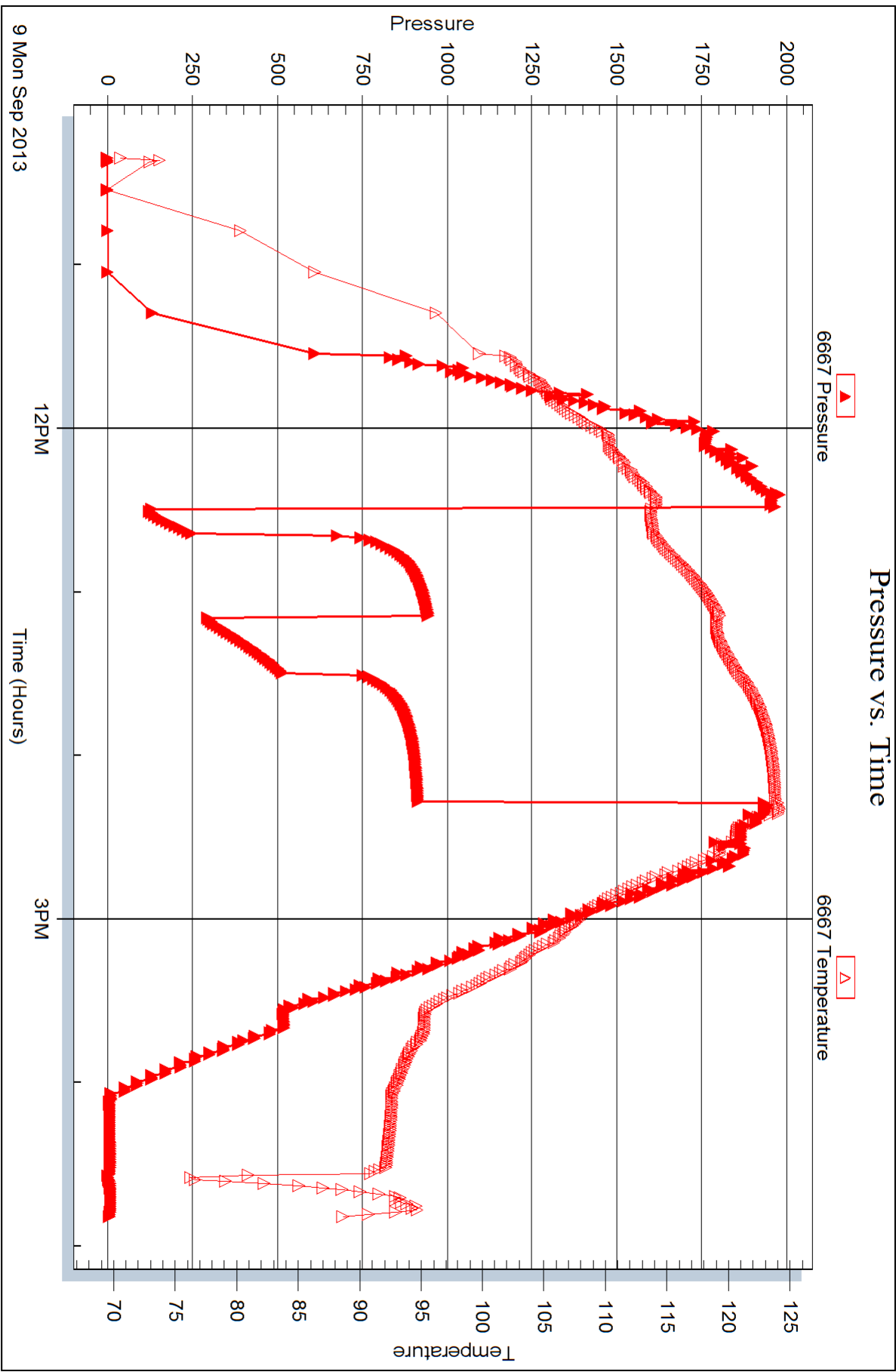
Serial #: 6667

Inside

Norstar Petroleum Inc

Welland #1-13

DST Test Number: 1





DRILL STEM TEST REPORT

Prepared For: **Norstar Petroleum Inc**

88 Inverness Cir E Unit F104
Englewood, CO 80112

ATTN: Bob Elder

Wieland #1-13

13-11s-32w Logan,KS

Start Date: 2013.09.10 @ 01:00:59

End Date: 2013.09.10 @ 08:05:23

Job Ticket #: 52850 DST #: 2

Trilobite Testing, Inc
PO Box 362 Hays, KS 67601
ph: 785-625-4778 fax: 785-625-5620

Printed: 2013.09.13 @ 09:21:04



TRILOBITE TESTING, INC.

DRILL STEM TEST REPORT

Norstar Petroleum Inc
 88 Inverness Cir E Unit F104
 Englewood, CO 80112
 ATTN: Bob Elder

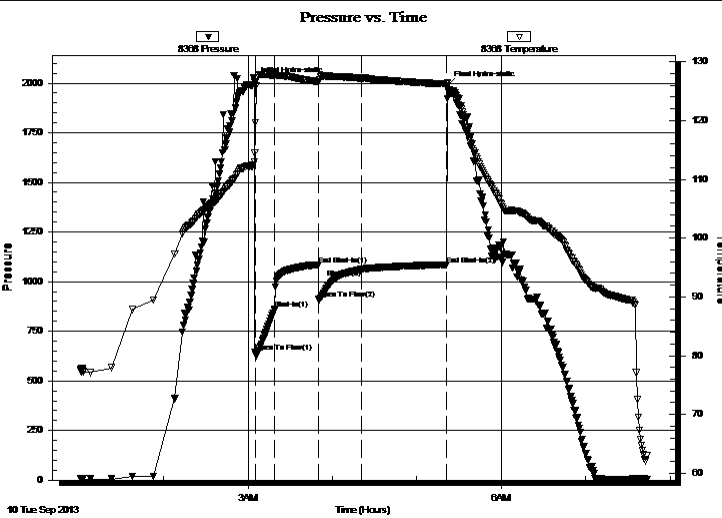
13-11s-32w Logan, KS
Wieland #1-13
 Job Ticket: 52850 **DST#: 2**
 Test Start: 2013.09.10 @ 01:00:59

GENERAL INFORMATION:

Formation: **E-F**
 Deviated: No Whipstock: ft (KB)
 Test Type: Conventional Bottom Hole (Reset)
 Time Tool Opened: 03:04:54 Tester: Shane McBride
 Time Test Ended: 08:05:23 Unit No: 55
 Interval: **4108.00 ft (KB) To 4134.00 ft (KB) (TVD)** Reference Elevations: 3031.00 ft (KB)
 Total Depth: 4134.00 ft (KB) (TVD) 3022.00 ft (CF)
 Hole Diameter: 7.88 inches Hole Condition: Fair KB to GR/CF: 9.00 ft

Serial #: 8368 Outside
 Press @ Run Depth: 1062.84 psig @ 4109.00 ft (KB) Capacity: 8000.00 psig
 Start Date: 2013.09.10 End Date: 2013.09.10 Last Calib.: 2013.09.10
 Start Time: 01:00:59 End Time: 07:43:23 Time On Btm: 2013.09.10 @ 03:04:24
 Time Off Btm: 2013.09.10 @ 05:21:54

TEST COMMENT: B.O.B. in 1 min.
 No return
 B.O.B. in 2 min
 No return



PRESSURE SUMMARY			
Time (Min.)	Pressure (psig)	Temp (deg F)	Annotation
0	2007.33	112.97	Initial Hydro-static
1	645.30	114.55	Open To Flow (1)
15	861.09	127.65	Shut-In(1)
46	1085.76	126.60	End Shut-In(1)
46	911.60	126.43	Open To Flow (2)
77	1062.84	127.20	Shut-In(2)
137	1085.40	126.21	End Shut-In(2)
138	1985.35	125.75	Final Hydro-static

Recovery		
Length (ft)	Description	Volume (bbl)
180.00	m c w 40m 60w	2.52
300.00	s m c w 15m 85w	4.21
1620.00	water 100w (reversed out)	22.72
120.00	water 100w (under circ sub)	1.68

* Recovery from multiple tests

Gas Rates			
	Choke (inches)	Pressure (psig)	Gas Rate (Mcf/d)



**TRILOBITE
TESTING, INC.**

DRILL STEM TEST REPORT

TOOL DIAGRAM

Norstar Petroleum Inc
88 Inverness Cir E Unit F104
Englewood, CO 80112
ATTN: Bob Elder

13-11s-32w Logan,KS
Wieland #1-13
Job Ticket: 52850 **DST#: 2**
Test Start: 2013.09.10 @ 01:00:59

Tool Information

Drill Pipe:	Length: 4097.00 ft	Diameter: 3.80 inches	Volume: 57.47 bbl	Tool Weight: 1500.00 lb
Heavy Wt. Pipe:	Length: 0.00 ft	Diameter: 0.00 inches	Volume: 0.00 bbl	Weight set on Packer: 25000.00 lb
Drill Collar:	Length: 0.00 ft	Diameter: 0.00 inches	Volume: 0.00 bbl	Weight to Pull Loose: 95000.00 lb
			<u>Total Volume: 57.47 bbl</u>	Tool Chased 0.00 ft
Drill Pipe Above KB:	17.00 ft			String Weight: Initial 65000.00 lb
Depth to Top Packer:	4108.00 ft			Final 75000.00 lb
Depth to Bottom Packer:	ft			
Interval between Packers:	26.00 ft			
Tool Length:	54.00 ft			
Number of Packers:	2	Diameter: 6.75 inches		

Tool Comments:

Tool Description	Length (ft)	Serial No.	Position	Depth (ft)	Accum. Lengths
-------------------------	--------------------	-------------------	-----------------	-------------------	-----------------------

Change Over Sub	1.00			4081.00	
Shut In Tool	5.00			4086.00	
Hydraulic tool	5.00			4091.00	
Jars	5.00			4096.00	
Safety Joint	3.00			4099.00	
Packer	5.00			4104.00	28.00 Bottom Of Top Packer
Packer	4.00			4108.00	
Stubb	1.00			4109.00	
Recorder	0.00	6667	Inside	4109.00	
Recorder	0.00	8368	Outside	4109.00	
Perforations	20.00			4129.00	
Bullnose	5.00			4134.00	26.00 Bottom Packers & Anchor

Total Tool Length: 54.00



**TRILOBITE
TESTING, INC.**

DRILL STEM TEST REPORT

FLUID SUMMARY

Norstar Petroleum Inc

13-11s-32w Logan,KS

88 Inverness Cir E Unit F104
Englewood, CO 80112

Wieland #1-13

Job Ticket: 52850

DST#: 2

ATTN: Bob Elder

Test Start: 2013.09.10 @ 01:00:59

Mud and Cushion Information

Mud Type: Gel Chem

Cushion Type:

Oil API:

0 deg API

Mud Weight: 9.00 lb/gal

Cushion Length:

ft

Water Salinity:

32500 ppm

Viscosity: 53.00 sec/qt

Cushion Volume:

bbbl

Water Loss: 8.70 in³

Gas Cushion Type:

Resistivity: 0.00 ohm.m

Gas Cushion Pressure:

psig

Salinity: 1500.00 ppm

Filter Cake: 1.00 inches

Recovery Information

Recovery Table

Length ft	Description	Volume bbbl
180.00	m c w 40m 60w	2.525
300.00	s m c w 15m 85w	4.208
1620.00	water 100w (reversed out)	22.724
120.00	water 100w (under circ sub)	1.683

Total Length: 2220.00 ft

Total Volume: 31.140 bbl

Num Fluid Samples: 0

Num Gas Bombs: 0

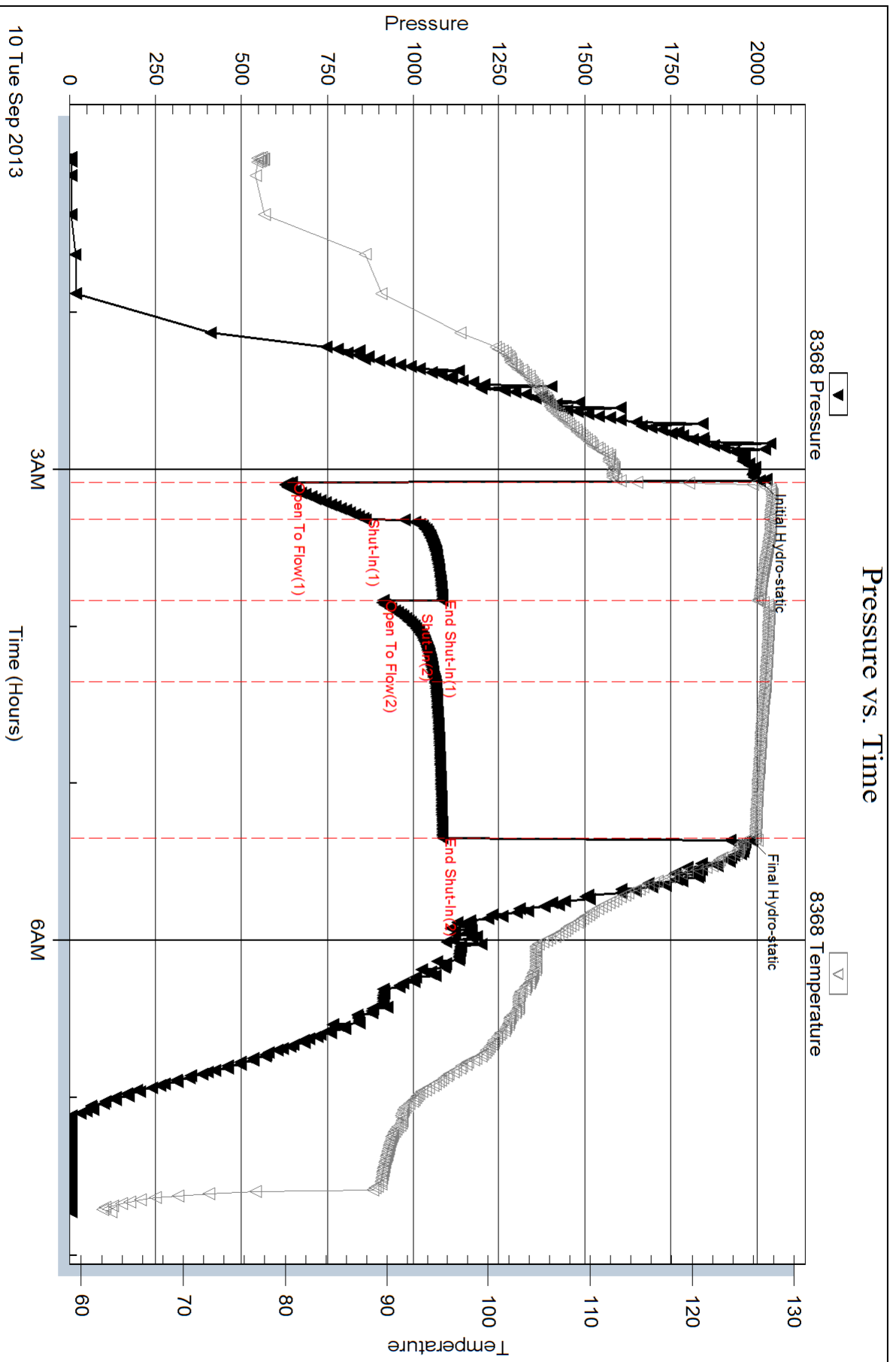
Serial #:

Laboratory Name:

Laboratory Location:

Recovery Comments: rw .218 @ 70*f = 32,500 chlor

Pressure vs. Time



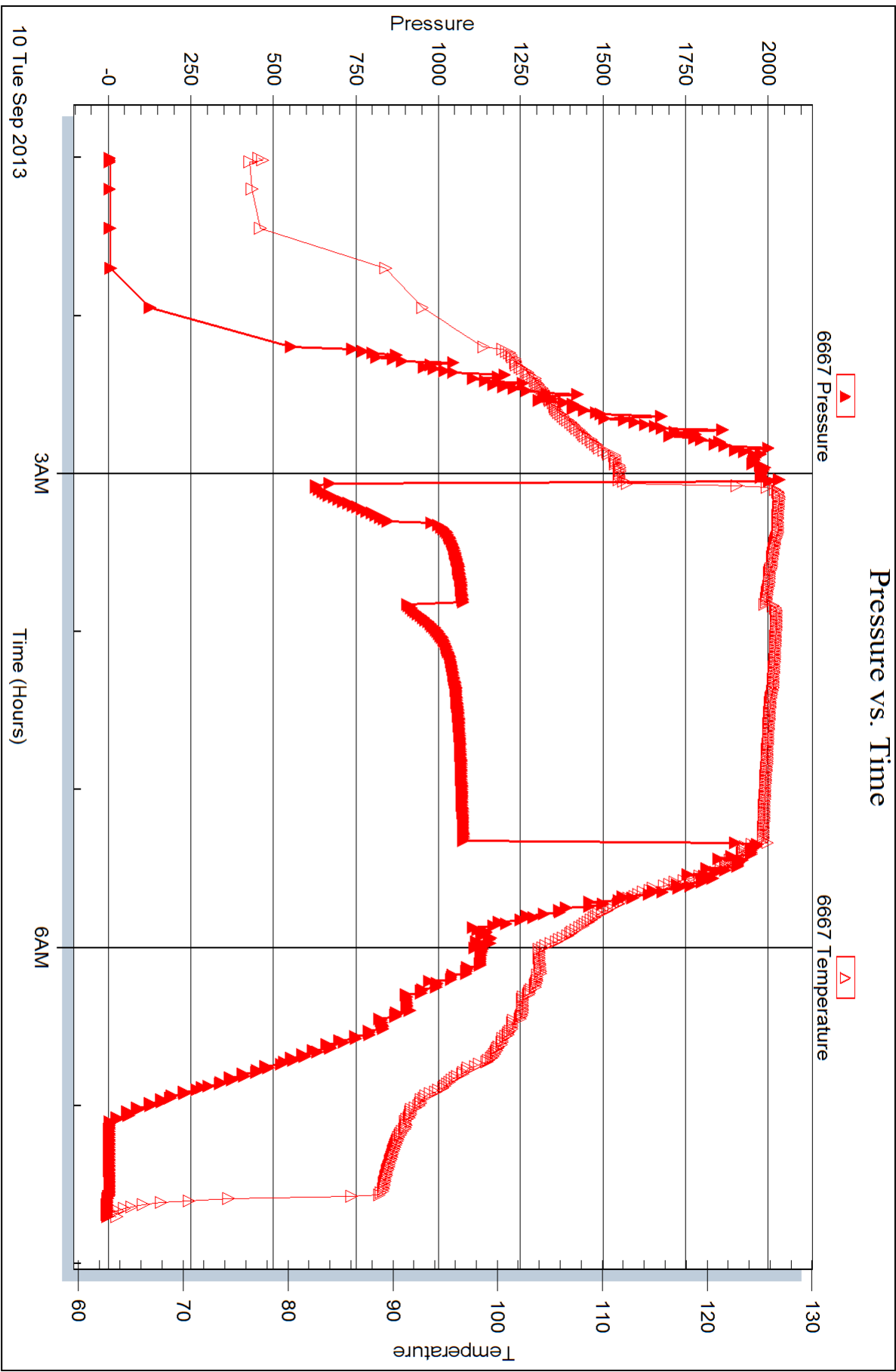
Serial #: 6667

Inside

Norstar Petroleum Inc

Welland #1-13

DST Test Number: 2





DRILL STEM TEST REPORT

Prepared For: **Norstar Petroleum Inc**

88 Inverness Cir E Unit F104
Englewood, CO 80112

ATTN: Bob Elder

Wieland #1-13

13-11s-32w Logan,KS

Start Date: 2013.09.10 @ 19:05:45

End Date: 2013.09.11 @ 03:20:54

Job Ticket #: 54626 DST #: 3

Trilobite Testing, Inc
PO Box 362 Hays, KS 67601
ph: 785-625-4778 fax: 785-625-5620

Printed: 2013.09.13 @ 09:17:58



**TRILOBITE
TESTING, INC.**

DRILL STEM TEST REPORT

TOOL DIAGRAM

Norstar Petroleum Inc
88 Inverness Cir E Unit F104
Englewood, CO 80112
ATTN: Bob Elder

13-11s-32w Logan,KS
Wieland #1-13
Job Ticket: 54626 **DST#: 3**
Test Start: 2013.09.10 @ 19:05:45

Tool Information

Drill Pipe:	Length: 4160.00 ft	Diameter: 3.80 inches	Volume: 58.35 bbl	Tool Weight: 1500.00 lb
Heavy Wt. Pipe:	Length: 0.00 ft	Diameter: 0.00 inches	Volume: 0.00 bbl	Weight set on Packer: 25000.00 lb
Drill Collar:	Length: 0.00 ft	Diameter: 0.00 inches	Volume: 0.00 bbl	Weight to Pull Loose: 95000.00 lb
			<u>Total Volume: 58.35 bbl</u>	Tool Chased 0.00 ft
Drill Pipe Above KB:	12.00 ft			String Weight: Initial 66000.00 lb
Depth to Top Packer:	4176.00 ft			Final 68000.00 lb
Depth to Bottom Packer:	ft			
Interval between Packers:	34.00 ft			
Tool Length:	62.00 ft			
Number of Packers:	2	Diameter: 6.75 inches		

Tool Comments:

Tool Description	Length (ft)	Serial No.	Position	Depth (ft)	Accum. Lengths
-------------------------	--------------------	-------------------	-----------------	-------------------	-----------------------

Change Over Sub	1.00			4149.00	
Shut In Tool	5.00			4154.00	
Hydraulic tool	5.00			4159.00	
Jars	5.00			4164.00	
Safety Joint	3.00			4167.00	
Packer	5.00			4172.00	28.00 Bottom Of Top Packer
Packer	4.00			4176.00	
Stubb	1.00			4177.00	
Recorder	0.00	6667	Inside	4177.00	
Recorder	0.00	8368	Outside	4177.00	
Perforations	28.00			4205.00	
Bullnose	5.00			4210.00	34.00 Bottom Packers & Anchor

Total Tool Length: 62.00



**TRILOBITE
TESTING, INC.**

DRILL STEM TEST REPORT

FLUID SUMMARY

Norstar Petroleum Inc
88 Inverness Cir E Unit F104
Englewood, CO 80112
ATTN: Bob Elder

13-11s-32w Logan,KS
Wieland #1-13
Job Ticket: 54626 **DST#: 3**
Test Start: 2013.09.10 @ 19:05:45

Mud and Cushion Information

Mud Type: Gel Chem	Cushion Type:	Oil API: 31 deg API
Mud Weight: 9.00 lb/gal	Cushion Length: ft	Water Salinity: 45000 ppm
Viscosity: 53.00 sec/qt	Cushion Volume: bbl	
Water Loss: 7.95 in ³	Gas Cushion Type:	
Resistivity: 0.00 ohm.m	Gas Cushion Pressure: psig	
Salinity: 2500.00 ppm		
Filter Cake: 1.00 inches		

Recovery Information

Recovery Table

Length ft	Description	Volume bbl
20.00	c g o 5g 950	0.281
150.00	m c w trace of oil 30%m 70%w	2.104
0.00	70' very weak gas in pipe	0.000

Total Length: 170.00 ft Total Volume: 2.385 bbl

Num Fluid Samples: 0 Num Gas Bombs: 0 Serial #:

Laboratory Name: Laboratory Location:

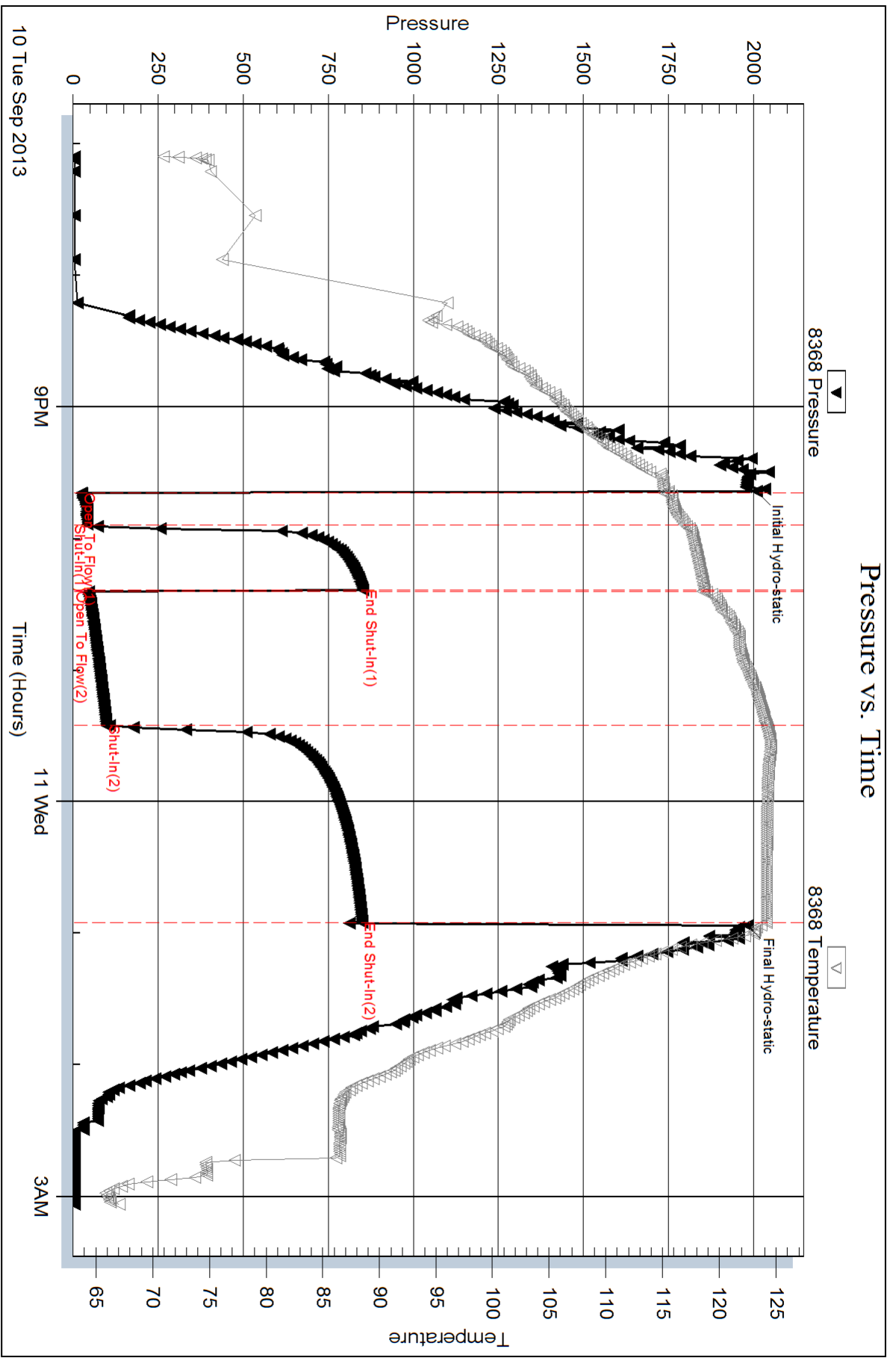
Recovery Comments: rw .154 @ 71*f =45,000 chlor

Serial #: 8368

Outside Norstar Petroleum Inc

Welland #1-13

DST Test Number: 3



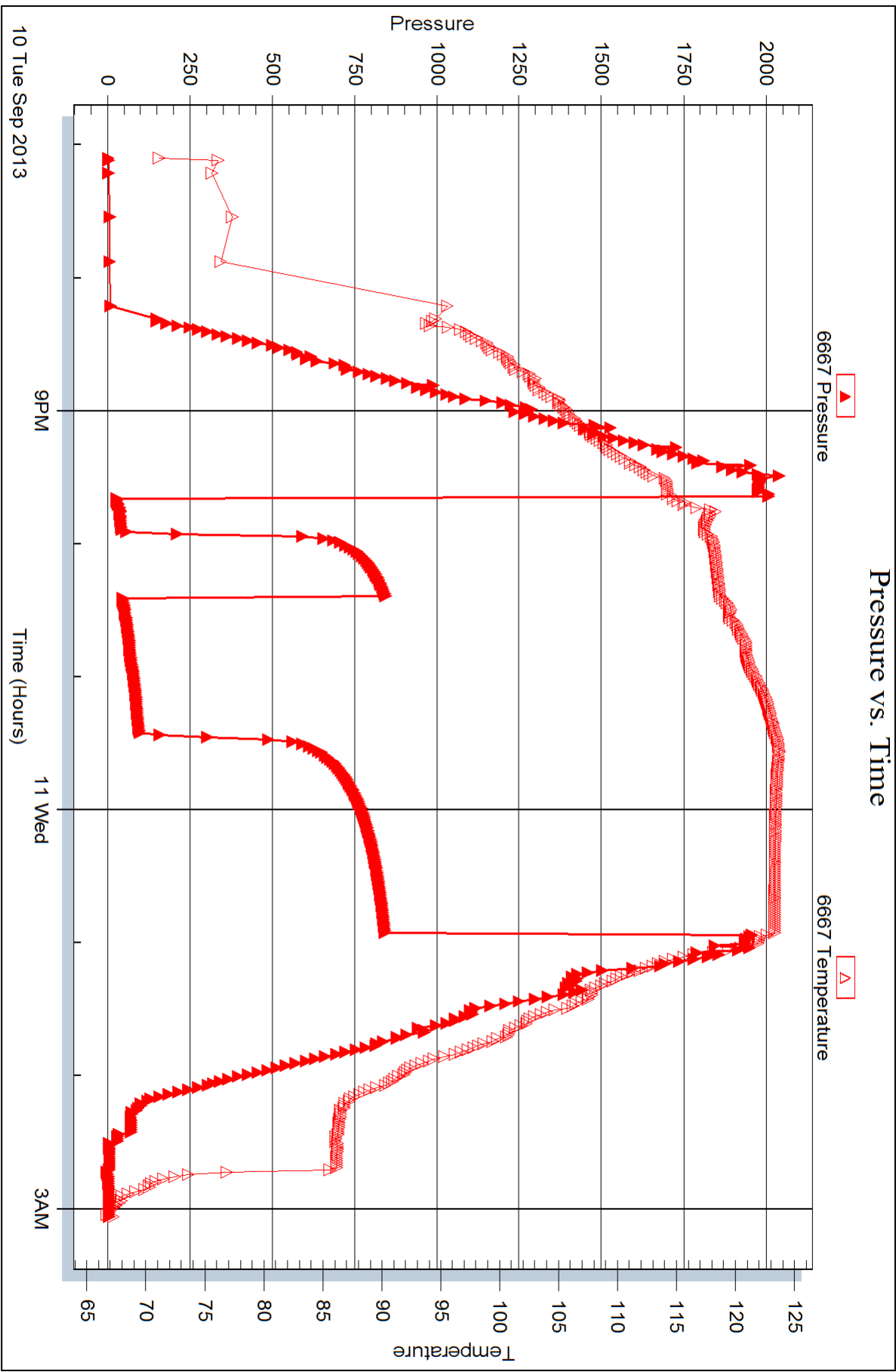
Serial #: 6667

Inside

Norstar Petroleum Inc

Welland #1-13

DST Test Number: 3





DRILL STEM TEST REPORT

Prepared For: **Norstar Petroleum Inc**

88 Inverness Cir E Unit F104
Englewood, CO 80112

ATTN: Bob Elder

Wieland #1-13

13-11s-32w Logan,KS

Start Date: 2013.09.11 @ 12:30:21

End Date: 2013.09.11 @ 18:35:15

Job Ticket #: 54627 DST #: 4

Trilobite Testing, Inc
PO Box 362 Hays, KS 67601
ph: 785-625-4778 fax: 785-625-5620

Printed: 2013.09.13 @ 09:17:24



**TRILOBITE
TESTING, INC.**

DRILL STEM TEST REPORT

Norstar Petroleum Inc
88 Inverness Cir E Unit F104
Englewood, CO 80112
ATTN: Bob Elder

13-11s-32w Logan,KS

Wieland #1-13

Job Ticket: 54627

DST#: 4

Test Start: 2013.09.11 @ 12:30:21

GENERAL INFORMATION:

Formation: **J**
 Deviated: **No** Whipstock: **ft (KB)** Test Type: **Conventional Bottom Hole (Reset)**
 Time Tool Opened: **14:11:31** Tester: **Shane McBride**
 Time Test Ended: **18:35:15** Unit No: **55**
Interval: 4207.00 ft (KB) To 4258.00 ft (KB) (TVD) Reference Elevations: **3031.00 ft (KB)**
 Total Depth: **4258.00 ft (KB) (TVD)** **3022.00 ft (CF)**
 Hole Diameter: **7.88 inches** Hole Condition: **Fair** KB to GR/CF: **9.00 ft**

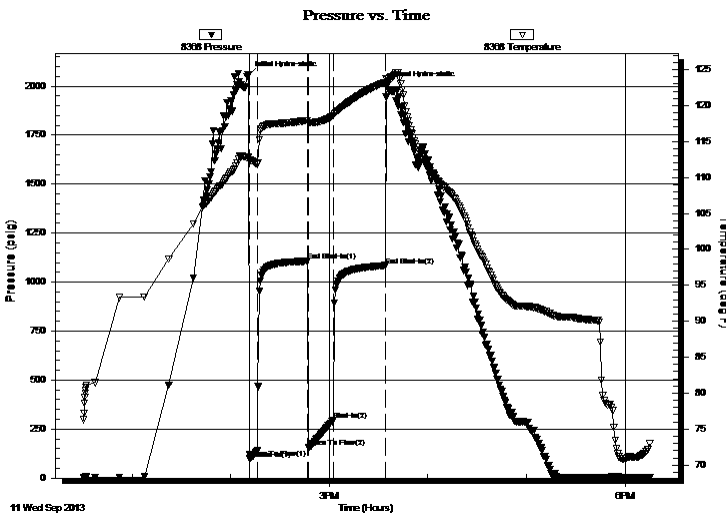
Serial #: 8368

Outside

Press @ Run Depth: **294.41 psig @ 4208.00 ft (KB)** Capacity: **8000.00 psig**
 Start Date: **2013.09.11** End Date: **2013.09.11** Last Calib.: **2013.09.11**
 Start Time: **12:30:21** End Time: **18:15:15** Time On Btm: **2013.09.11 @ 14:10:46**
 Time Off Btm: **2013.09.11 @ 15:35:16**

TEST COMMENT: B.O.B. in 2 1/2 min.
 No return
 B.O.B. in 3 1/2 min.
 No return

PRESSURE SUMMARY



Time (Min.)	Pressure (psig)	Temp (deg F)	Annotation
0	2055.73	112.89	Initial Hydro-static
1	101.77	112.41	Open To Flow (1)
6	143.69	111.85	Shut-In(1)
36	1107.22	117.94	End Shut-In(1)
37	155.68	117.63	Open To Flow (2)
52	294.41	118.58	Shut-In(2)
84	1084.95	123.25	End Shut-In(2)
85	2004.74	123.71	Final Hydro-static

Recovery

Length (ft)	Description	Volume (bbl)
90.00	o & w c m 15o 25w 60m	1.26
240.00	g o & m c w 15g 20o 25m 40w	3.37
300.00	g o & m c w 10g 20o 20m 50w	4.21

* Recovery from multiple tests

Gas Rates

Choke (inches)	Pressure (psig)	Gas Rate (Mcf/d)



**TRILOBITE
TESTING, INC.**

DRILL STEM TEST REPORT

TOOL DIAGRAM

Norstar Petroleum Inc
88 Inverness Cir E Unit F104
Englewood, CO 80112
ATTN: Bob Elder

13-11s-32w Logan,KS
Wieland #1-13
Job Ticket: 54627 **DST#: 4**
Test Start: 2013.09.11 @ 12:30:21

Tool Information

Drill Pipe:	Length: 4191.00 ft	Diameter: 3.80 inches	Volume: 58.79 bbl	Tool Weight: 1500.00 lb
Heavy Wt. Pipe:	Length: 0.00 ft	Diameter: 0.00 inches	Volume: 0.00 bbl	Weight set on Packer: 25000.00 lb
Drill Collar:	Length: 0.00 ft	Diameter: 0.00 inches	Volume: 0.00 bbl	Weight to Pull Loose: 95000.00 lb
			<u>Total Volume: 58.79 bbl</u>	Tool Chased 0.00 ft
Drill Pipe Above KB:	12.00 ft			String Weight: Initial 67000.00 lb
Depth to Top Packer:	4207.00 ft			Final 71000.00 lb
Depth to Bottom Packer:	ft			
Interval between Packers:	51.00 ft			
Tool Length:	79.00 ft			
Number of Packers:	2	Diameter: 6.75 inches		

Tool Comments:

Tool Description	Length (ft)	Serial No.	Position	Depth (ft)	Accum. Lengths
-------------------------	--------------------	-------------------	-----------------	-------------------	-----------------------

Change Over Sub	1.00			4180.00	
Shut In Tool	5.00			4185.00	
Hydraulic tool	5.00			4190.00	
Jars	5.00			4195.00	
Safety Joint	3.00			4198.00	
Packer	5.00			4203.00	28.00 Bottom Of Top Packer
Packer	4.00			4207.00	
Stubb	1.00			4208.00	
Recorder	0.00	6667	Inside	4208.00	
Recorder	0.00	8368	Outside	4208.00	
Perforations	12.00			4220.00	
Change Over Sub	1.00			4221.00	
Drill Pipe	31.00			4252.00	
Change Over Sub	1.00			4253.00	
Bullnose	5.00			4258.00	51.00 Bottom Packers & Anchor

Total Tool Length: 79.00



**TRILOBITE
TESTING, INC.**

DRILL STEM TEST REPORT

FLUID SUMMARY

Norstar Petroleum Inc

13-11s-32w Logan,KS

88 Inverness Cir E Unit F104
Englewood, CO 80112

Wieland #1-13

Job Ticket: 54627

DST#: 4

ATTN: Bob Elder

Test Start: 2013.09.11 @ 12:30:21

Mud and Cushion Information

Mud Type: Gel Chem

Cushion Type:

Oil API:

0 deg API

Mud Weight: 9.00 lb/gal

Cushion Length:

ft

Water Salinity:

48500 ppm

Viscosity: 58.00 sec/qt

Cushion Volume:

bbbl

Water Loss: 9.17 in³

Gas Cushion Type:

Resistivity: 0.00 ohm.m

Gas Cushion Pressure:

psig

Salinity: 3200.00 ppm

Filter Cake: 1.00 inches

Recovery Information

Recovery Table

Length ft	Description	Volume bbl
90.00	o & w c m 15o 25w 60m	1.262
240.00	g o & m c w 15g 20o 25m 40w	3.367
300.00	g o & m c w 10g 20o 20m 50w	4.208

Total Length: 630.00 ft Total Volume: 8.837 bbl

Num Fluid Samples: 0

Num Gas Bombs: 0

Serial #:

Laboratory Name:

Laboratory Location:

Recovery Comments: rw .134 @ 76*f =48,500 chlor

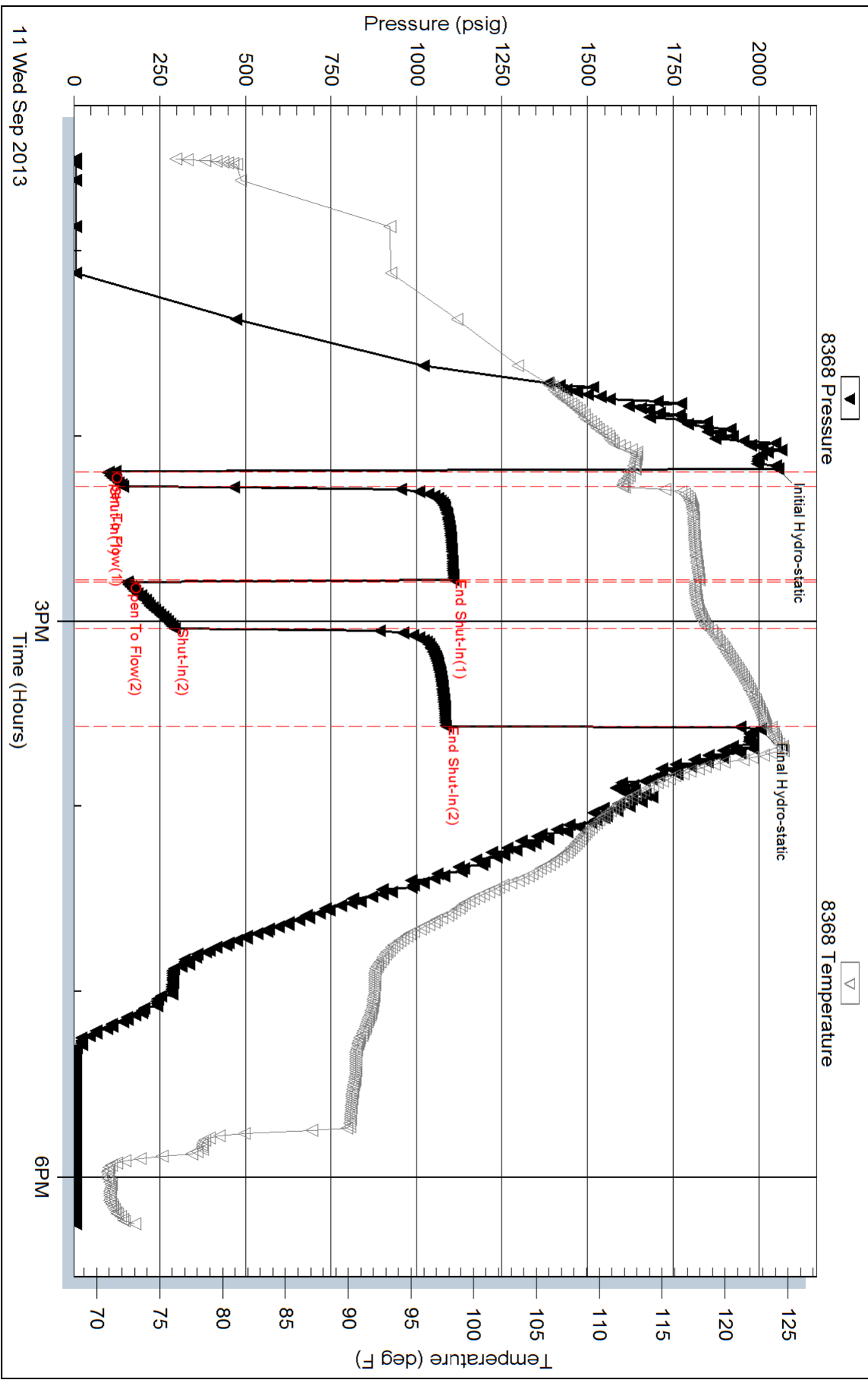
Serial #: 8368

Outside Norstar Petroleum Inc

Welland #1-13

DST Test Number: 4

Pressure vs. Time



Trilobite Testing, Inc

Ref. No: 54627

Printed: 2013.09.13 @ 09:17:25

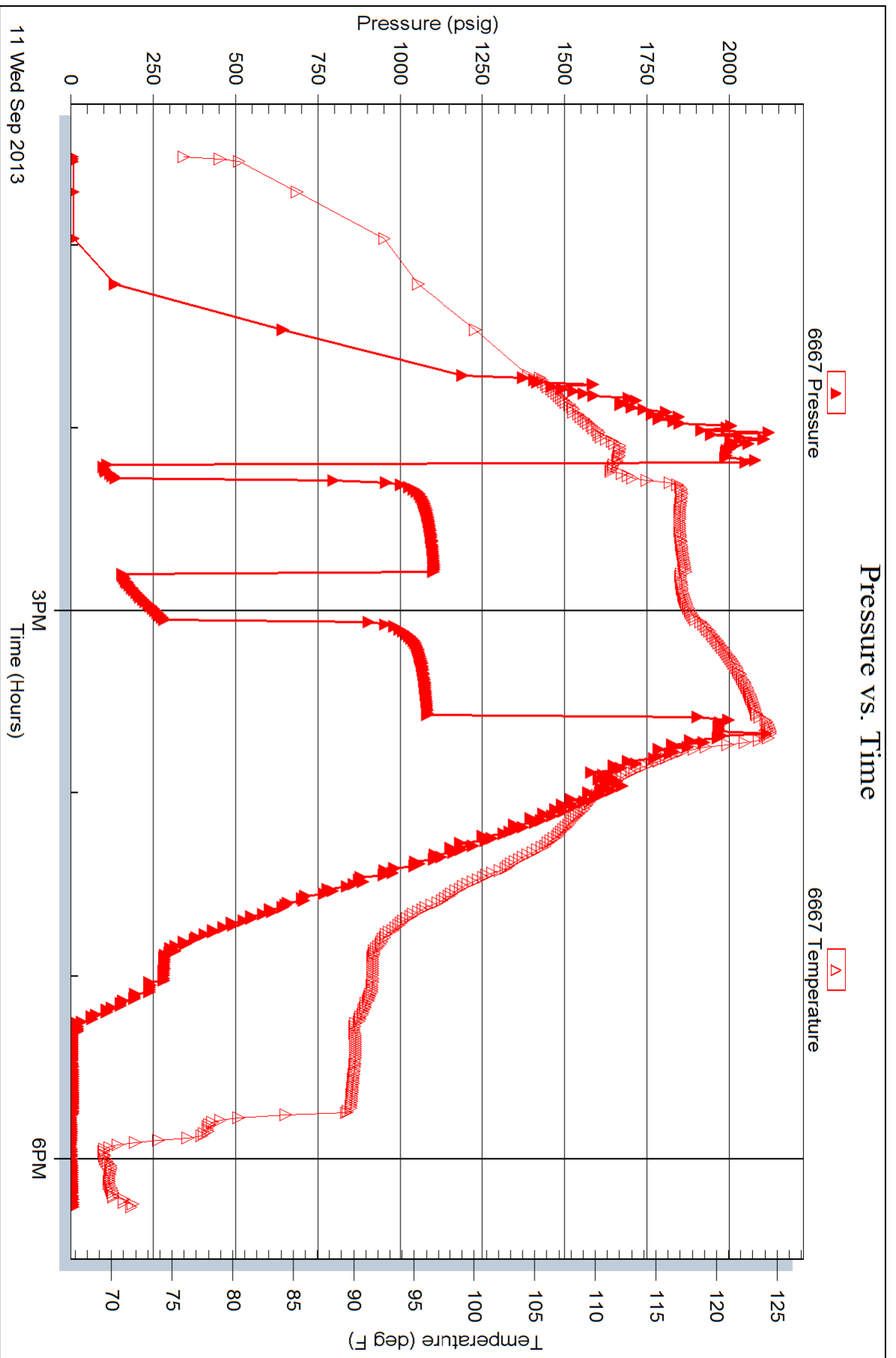
Serial #: 6667

Inside

Norstar Petroleum Inc

Welland #1-13

DST Test Number: 4





4/10

TRILOBITE TESTING INC.

1515 Commerce Parkway • Hays, Kansas 67601

Test Ticket

NO. 52849

Well Name & No. Wieland #1-13 Test No. #1 Date 9/9/13
 Company Norstar Petroleum Inc Elevation 3031 KB 3022 GL
 Address 88 Inverness Cir Edwrt F104 Englewood Colo 80112
 Co. Rep / Geo. Bob Elder Rig Val #4
 Location: Sec. 13 Twp. 11S Rge. 32W Co. Logan State Ks

Interval Tested 4060 4100 Zone Tested B-C
 Anchor Length 40 Drill Pipe Run 4065' Mud Wt. 9.2
 Top Packer Depth 4055 Drill Collars Run — Vis 53
 Bottom Packer Depth 4060 Wt. Pipe Run — WL 8.8
 Total Depth 4100 Chlorides 1500 ppm System LCM #2

Blow Description B.O.B. in 2 1/2 min.
No return
B.O.B. in 4 min
No return

Rec	Feet of	%gas	%oil	%water	%mud
<u>125</u>	<u>Feet of mcw w/oil spots</u>		<u>50</u>	<u>30</u>	
<u>300</u>	<u>Feet of smcw</u>		<u>80</u>	<u>20</u>	
<u>660</u>	<u>Feet of water</u>		<u>100</u>		

Rec Total 1085' BHT 125° Gravity — API RW. 130 @ 75° F Chlorides 50000 ppm

(A) Initial Hydrostatic 1966 Test 1250 T-On Location 09:40
 (B) First Initial Flow 127 Jars 250 T-Started 10:20
 (C) First Final Flow 266 Safety Joint 75 T-Open 12:28
 (D) Initial Shut-In 942 Circ Sub N/C T-Pulled 14:13
 (E) Second Initial Flow 295 Hourly Standby T-Out 17:15
 (F) Second Final Flow 521 Mileage 92 RT 142.60
 (G) Final Shut-In 918 Sampler
 (H) Final Hydrostatic 1912 Straddle Ruined Shale Packer
 Shale Packer Ruined Packer
 Extra Packer Extra Copies
 Extra Recorder
 Day Standby
 Accessibility

Initial Open 10
 Initial Shut-In 30
 Final Flow 20
 Final Shut-In 45
 Sub Total 0
 Total 1717.60
 MP/DST Disc't/

Approved By Bob Elder Our Representative [Signature]

Trilobite Testing Inc. shall not be liable for damaged of any kind of the property or personnel of the one for whom a test is made, or for any loss suffered or sustained, directly or indirectly, through the use of its equipment, or its statements or opinion concerning the results of any test, tools lost or damaged in the hole shall be paid for at cost by the party for whom the test is made.



TRILOBITE TESTING INC.

1515 Commerce Parkway • Hays, Kansas 67601

Test Ticket

NO. 52850

Well Name & No. Wieland #1-13 Test No. #2 Date 9/10/13
 Company Noistar Petroleum Inc. Elevation 3031 KB 3022 GL
 Address 88 Inverness Cir E unit F104 Englewood Colo 80112
 Co. Rep / Geo. Bob Elder Rig Val #1
 Location: Sec. 13 Twp. 11S Rge. 32W Co. Logan State Ks

Interval Tested 4108 4134 Zone Tested E-F
 Anchor Length 26 Drill Pipe Run 4097 Mud Wt. 9.2
 Top Packer Depth 4103 Drill Collars Run — Vis 53
 Bottom Packer Depth 4108 Wt. Pipe Run — WL 8.8
 Total Depth 4134 Chlorides 1500 ppm System LCM #2

Blow Description B.O.B. in 1 min.
No return
B.O.B. in 2 min
No return

Rec	Feet of	%gas	%oil	%water	%mud
<u>180</u>	<u>Feet of m.c.w</u>		<u>60</u>	<u>40</u>	
<u>300</u>	<u>Feet of s.m.c.w</u>		<u>85</u>	<u>15</u>	
<u>1620</u>	<u>Feet of water (Reversed out)</u>		<u>100</u>		
<u>120</u>	<u>Feet of water (under Circ Sub)</u>		<u>100</u>		
<u> </u>	<u>Feet of</u>				

Rec Total 2220 BHT 127° Gravity — API RW 218 @ 70° F Chlorides 32,500 ppm

(A) Initial Hydrostatic <u>2007</u>	<input checked="" type="checkbox"/> Test <u>1250</u>	T-On Location <u>00:40</u>
(B) First Initial Flow <u>645</u>	<input checked="" type="checkbox"/> Jars <u>250</u>	T-Started <u>01:00</u>
(C) First Final Flow <u>861</u>	<input checked="" type="checkbox"/> Safety Joint <u>75</u>	T-Open <u>03:05</u>
(D) Initial Shut-In <u>1085</u>	<input checked="" type="checkbox"/> Circ Sub <u>50⁰⁰</u>	T-Pulled <u>05:20</u>
(E) Second Initial Flow <u>911</u>	<input type="checkbox"/> Hourly Standby	T-Out
(F) Second Final Flow <u>1062</u>	<input checked="" type="checkbox"/> Mileage <u>92 RT</u> <u>142.60</u>	Comments
(G) Final Shut-In <u>1085</u>	<input type="checkbox"/> Sampler	
(H) Final Hydrostatic <u>1985</u>	<input type="checkbox"/> Straddle	<input type="checkbox"/> Ruined Shale Packer
	<input type="checkbox"/> Shale Packer	<input type="checkbox"/> Ruined Packer
	<input type="checkbox"/> Extra Packer	<input type="checkbox"/> Extra Copies

Initial Open 15
 Initial Shut-In 30
 Final Flow 30
 Final Shut-In 60

Sub Total 1767.60 MP/DST Disc P

Approved By Bob Elder Our Representative [Signature]

TriLOBITE Testing Inc. shall not be liable for damaged of any kind of the property or personnel of the one for whom a test is made, or for any loss suffered or sustained, directly or indirectly, through the use of its equipment, or its statements or opinion concerning the results of any test, tools lost or damaged in the hole shall be paid for at cost by the party for whom the test is made.



TRILOBITE TESTING INC.

1515 Commerce Parkway • Hays, Kansas 67601

Test Ticket

NO. 54626

Well Name & No. Wieland #1-13 Test No. #3 Date 9/11/13
 Company Horst Petroleum Inc Elevation 3031 KB 3022 GL
 Address 88 Inverness Cir Unit F104, Englewood, Colo. 80122
 Co. Rep / Geo. Bob Elder Rig Tal #4
 Location: Sec. 13 Twp. 11S Rge. 32W Co. Hogan State Ks

Interval Tested 4176 4210 Zone Tested H
 Anchor Length 34 Drill Pipe Run 4160 Mud Wt. 9.0
 Top Packer Depth 4171 Drill Collars Run — Vis 53
 Bottom Packer Depth 4176 Wt. Pipe Run — WL 8.0
 Total Depth 4210 Chlorides 2500 ppm System LCM #2

Blow Description 5 1/4" in blow
No return
B.O.B. in 48 min
Weak surface return in 10min. died in 35min

Rec	Feet of	%gas	%oil	%water	%mud
<u>20'</u>	<u>C90</u>	<u>5</u>	<u>95</u>		
<u>150'</u>	<u>mcw trace / 6 oil</u>		<u>Trace</u>	<u>70</u>	<u>30</u>
Rec	Feet of	%gas	%oil	%water	%mud
Rec	Feet of <u>(70' very weak gas in pipe)</u>	%gas	%oil	%water	%mud
Rec	Feet of	%gas	%oil	%water	%mud

Rec Total 170' BHT 124° Gravity — API RW .154 @ 71 °F Chlorides 45,000 ppm

(A) Initial Hydrostatic <u>2010</u>	<input checked="" type="checkbox"/> Test <u>1250</u>	T-On Location <u>18:20</u>
(B) First Initial Flow <u>26</u>	<input checked="" type="checkbox"/> Jars <u>250</u>	T-Started <u>19:05</u>
(C) First Final Flow <u>45</u>	<input checked="" type="checkbox"/> Safety Joint <u>75</u>	T-Open <u>21:38</u>
(D) Initial Shut-In <u>852</u>	<input checked="" type="checkbox"/> Circ Sub <u>N/C</u>	T-Pulled <u>00:53</u>
(E) Second Initial Flow <u>47</u>	<input type="checkbox"/> Hourly Standby	T-Out <u>03:20</u>
(F) Second Final Flow <u>98</u>	<input checked="" type="checkbox"/> Mileage <u>92.45</u> 142.60	Comments
(G) Final Shut-In <u>849</u>	<input type="checkbox"/> Sampler	
(H) Final Hydrostatic <u>1982</u>	<input type="checkbox"/> Straddle	<input type="checkbox"/> Ruined Shale Packer
	<input type="checkbox"/> Shale Packer	<input type="checkbox"/> Ruined Packer

Initial Open 15
 Initial Shut-In 30
 Final Flow 60
 Final Shut-In 90

Extra Packer
 Extra Recorder
 Day Standby
 Accessibility

Sub Total 1717.60

Total 1717.60
 MP/DST Disc't

Approved By [Signature] Our Representative [Signature]

Trilobite Testing Inc. shall not be liable for damaged of any kind of the property or personnel of the one for whom a test is made, or for any loss suffered or sustained, directly or indirectly, through the use of its equipment, or its statements or opinion concerning the results of any test, tools lost or damaged in the hole shall be paid for at cost by the party for whom the test is made.



TRILOBITE TESTING INC.

1515 Commerce Parkway • Hays, Kansas 67601

Test Ticket

NO. 54628

Well Name & No. Wichard # 1-13 Test No. # 4 Date 9/11/13
 Company Noistar Petroleum Inc Elevation 3031 KB 3022 GL
 Address 88 Inverness Cir E Unit #104, Englewood, Colo. 80112
 Co. Rep / Geo. Bob. Elder Rig Vgt # 4
 Location: Sec. 13 Twp. 11S Rge. 32W Co. Dogon State Ks

Interval Tested 4207 4258 Zone Tested J
 Anchor Length 51 Drill Pipe Run 4191 Mud Wt. 9.1
 Top Packer Depth 4202 Drill Collars Run — Vis 58
 Bottom Packer Depth 4207 Wt. Pipe Run — WL 9.2
 Total Depth 4258 Chlorides 3200 ppm System LCM # 1

Blow Description B.O.B. in 2 1/2 min
No return
B.O.B. in 3 1/2 min
No return

Rec	Feet of	%gas	%oil	%water	%mud
<u>90</u>	<u>0' 3/4" m</u>	<u>15</u>	<u>25</u>	<u>60</u>	<u>—</u>
<u>240</u>	<u>9' 0 3/4" mcw</u>	<u>15</u>	<u>20</u>	<u>40</u>	<u>25</u>
<u>300</u>	<u>9' 0 3/4" mcw</u>	<u>10</u>	<u>20</u>	<u>50</u>	<u>20</u>
Rec	Feet of	%gas	%oil	%water	%mud
Rec	Feet of	%gas	%oil	%water	%mud

Rec Total 630' BHT 124° Gravity — API RW 134 @ 76° F Chlorides 48,500 ppm

(A) Initial Hydrostatic <u>2055</u>	<input checked="" type="checkbox"/> Test <u>1250</u>	T-On Location <u>12:20</u>
(B) First Initial Flow <u>101</u>	<input checked="" type="checkbox"/> Jars <u>250</u>	T-Started <u>12:30</u>
(C) First Final Flow <u>143</u>	<input checked="" type="checkbox"/> Safety Joint <u>75</u>	T-Open <u>14:15</u>
(D) Initial Shut-In <u>1107</u>	<input checked="" type="checkbox"/> Circ Sub <u>n/c</u>	T-Pulled <u>15:35</u>
(E) Second Initial Flow <u>155</u>	<input type="checkbox"/> Hourly Standby	T-Out <u>18:35</u>
(F) Second Final Flow <u>294</u>	<input checked="" type="checkbox"/> Mileage <u>92 RT</u> 264.96	Comments <u>loaded tools 9/12 19:45</u>
(G) Final Shut-In <u>1084</u>	<input type="checkbox"/> Sampler	
(H) Final Hydrostatic <u>2004</u>	<input type="checkbox"/> Straddle	<input type="checkbox"/> Ruined Shale Packer

Initial Open 5 Extra Packer Extra Copies
 Initial Shut-In 30 Extra Recorder Sub Total 800
 Final Flow 15 Day Standby 1d 1.25h Total 2639.96
 Final Shut-In 30 Accessibility MP/DST Disc't —
 Sub Total 1839.96

Approved By: Bob Elder Our Representative: [Signature]

Trilobite Testing Inc. shall not be liable for damaged of any kind of the property or personnel of the one for whom a test is made, or for any loss suffered or sustained, directly or indirectly, through the use of its equipment, or its statements or opinion concerning the results of any test, tools lost or damaged in the hole shall be paid for at cost by the party for whom the test is made.