

DRILL STEM TEST REPORT

Prepared For: **Landmark Resources Inc**

1616 S Voss Rd Ste 600
Houston, TX 77057

ATTN: Terry Mcleod

Gerstberger #1-30

30-17s-36w Wichita,KS

Start Date: 2013.09.04 @ 22:45:46

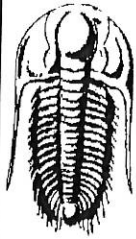
End Date: 2013.09.05 @ 07:25:01

Job Ticket #: 52847 DST #: 1

Trilobite Testing, Inc

PO Box 362 Hays, KS 67601

ph: 785-625-4778 fax: 785-625-5620



TRILOBITE TESTING, INC.

DRILL STEM TEST REPORT

Landmark Resources Inc

30-17s-36w Wichita,KS

1616 S Voss Rd Ste 600
Houston, TX 77057

Gerstberger #1-30

Job Ticket: 52847

DST#: 1

ATTN: Terry Mcleod

Test Start: 2013.09.04 @ 22:45:46

GENERAL INFORMATION:

Formation: **Marmaton**

Deviated: No Whipstock: ft (KB)

Time Tool Opened: 00:52:46

Time Test Ended: 07:25:01

Test Type: Conventional Bottom Hole (Initial)

Tester: Shane McBride

Unit No: 55

Interval: 4416.00 ft (KB) To 4487.00 ft (KB) (TVD)

Total Depth: 4487.00 ft (KB) (TVD)

Hole Diameter: 7.88 inches Hole Condition: Fair

Reference Elevations: 3306.00 ft (KB)

3294.00 ft (CF)

KB to GR/CF: 12.00 ft

Serial #: 8368 Outside

Press@RunDepth: 111.88 psig @ 4417.00 ft (KB)

Start Date: 2013.09.04

End Date:

2013.09.05

Capacity: 8000.00 psig

Last Calib.: 2013.09.05

Start Time: 22:45:51

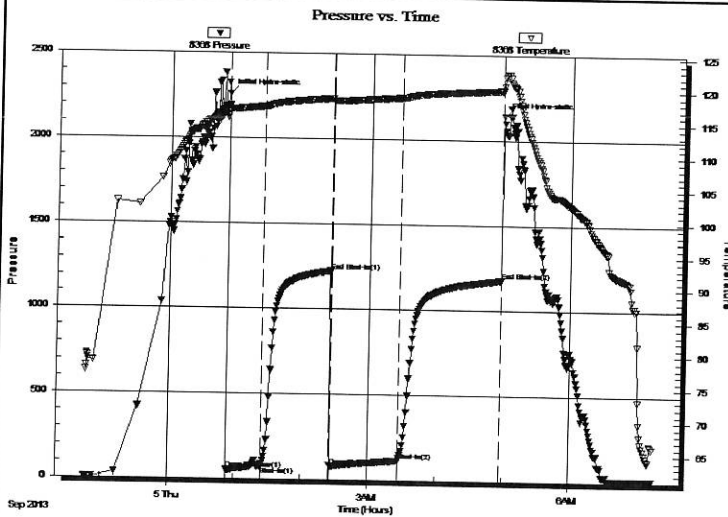
End Time:

07:15:00

Time On Btm: 2013.09.05 @ 00:52:31

Time Off Btm: 2013.09.05 @ 04:58:31

TEST COMMENT: 2 3/4" blow
No return
1 1/2" blow
No return



PRESSURE SUMMARY

Time (Min.)	Pressure (psig)	Temp (deg F)	Annotation
0	2262.22	117.48	Initial Hydro-static
1	49.61	116.60	Open To Flow (1)
31	72.39	117.37	Shut-In(1)
93	1224.15	118.63	End Shut-In(1)
94	78.88	118.29	Open To Flow (2)
154	111.88	118.86	Shut-In(2)
245	1177.04	120.07	End Shut-In(2)
246	2142.23	120.73	Final Hydro-static

Recovery

Length (ft)	Description	Volume (bbl)
70.00	free oil 100% oil	0.34
110.00	o c m 20%o 80%m	0.54

Gas Rates

	Choke (inches)	Pressure (psig)	Gas Rate (Mcf/d)



**TRILOBITE
TESTING, INC.**

DRILL STEM TEST REPORT

TOOL DIAGRAM

Landmark Resources Inc

30-17s-36w Wichita,KS

1616 S Voss Rd Ste 600
Houston, TX 77057

Gerstberger #1-30

Job Ticket: 52847

DST#: 1

ATTN: Terry Mcleod

Test Start: 2013.09.04 @ 22:45:46

Tool Information

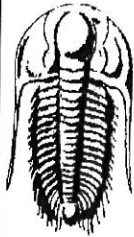
Drill Pipe:	Length: 4165.00 ft	Diameter: 3.80 inches	Volume: 58.42 bbl	Tool Weight: 1500.00 lb
Heavy Wt. Pipe:	Length: 0.00 ft	Diameter: 0.00 inches	Volume: 0.00 bbl	Weight set on Packer: 25000.00 lb
Drill Collar:	Length: 238.00 ft	Diameter: 2.25 inches	Volume: 1.17 bbl	Weight to Pull Loose: 90000.00 lb
			<u>Total Volume: 59.59 bbl</u>	Tool Chased 0.00 ft
Drill Pipe Above KB:	15.00 ft			String Weight: Initial 68000.00 lb
Depth to Top Packer:	4416.00 ft			Final 69000.00 lb
Depth to Bottom Packer:	ft			
Interval between Packers:	71.00 ft			
Tool Length:	99.00 ft			
Number of Packers:	2	Diameter: 6.75 inches		

Tool Comments:

Tool Description

Tool Description	Length (ft)	Serial No.	Position	Depth (ft)	Accum. Lengths
Change Over Sub	1.00			4389.00	
Shut In Tool	5.00			4394.00	
Hydraulic tool	5.00			4399.00	
Jars	5.00			4404.00	
Safety Joint	3.00			4407.00	
Packer	5.00			4412.00	28.00 Bottom Of Top Packer
Packer	4.00			4416.00	
Stubb	1.00			4417.00	
Recorder	0.00	6667	Inside	4417.00	
Recorder	0.00	8368	Outside	4417.00	
Perforations	31.00			4448.00	
Change Over Sub	1.00			4449.00	
Drill Pipe	32.00			4481.00	
Change Over Sub	1.00			4482.00	
Bullnose	5.00			4487.00	71.00 Bottom Packers & Anchor

Total Tool Length: 99.00



**TRILOBITE
TESTING, INC**

DRILL STEM TEST REPORT

FLUID SUMMARY

Landmark Resources Inc

30-17s-36w Wichita,KS

1616 S Voss Rd Ste 600
Houston, TX 77057

Gerstberger #1-30

Job Ticket: 52847

DST#: 1

ATTN: Terry Mcleod

Test Start: 2013.09.04 @ 22:45:46

Mud and Cushion Information

Mud Type: Gel Chem

Cushion Type:

Oil API:

25 deg API

Mud Weight: 9.00 lb/gal

Cushion Length:

ft

Water Salinity:

0 ppm

Viscosity: 51.00 sec/qt

Cushion Volume:

bbbl

Water Loss: 8.72 in³

Gas Cushion Type:

Resistivity: 0.00 ohm.m

Gas Cushion Pressure:

psig

Salinity: 3600.00 ppm

Filter Cake: 1.00 inches

Recovery Information

Recovery Table

Length ft	Description	Volume bbl
70.00	free oil 100% oil	0.344
110.00	o c m 20% o 80% m	0.541

Total Length: 180.00 ft

Total Volume: 0.885 bbl

Num Fluid Samples: 0

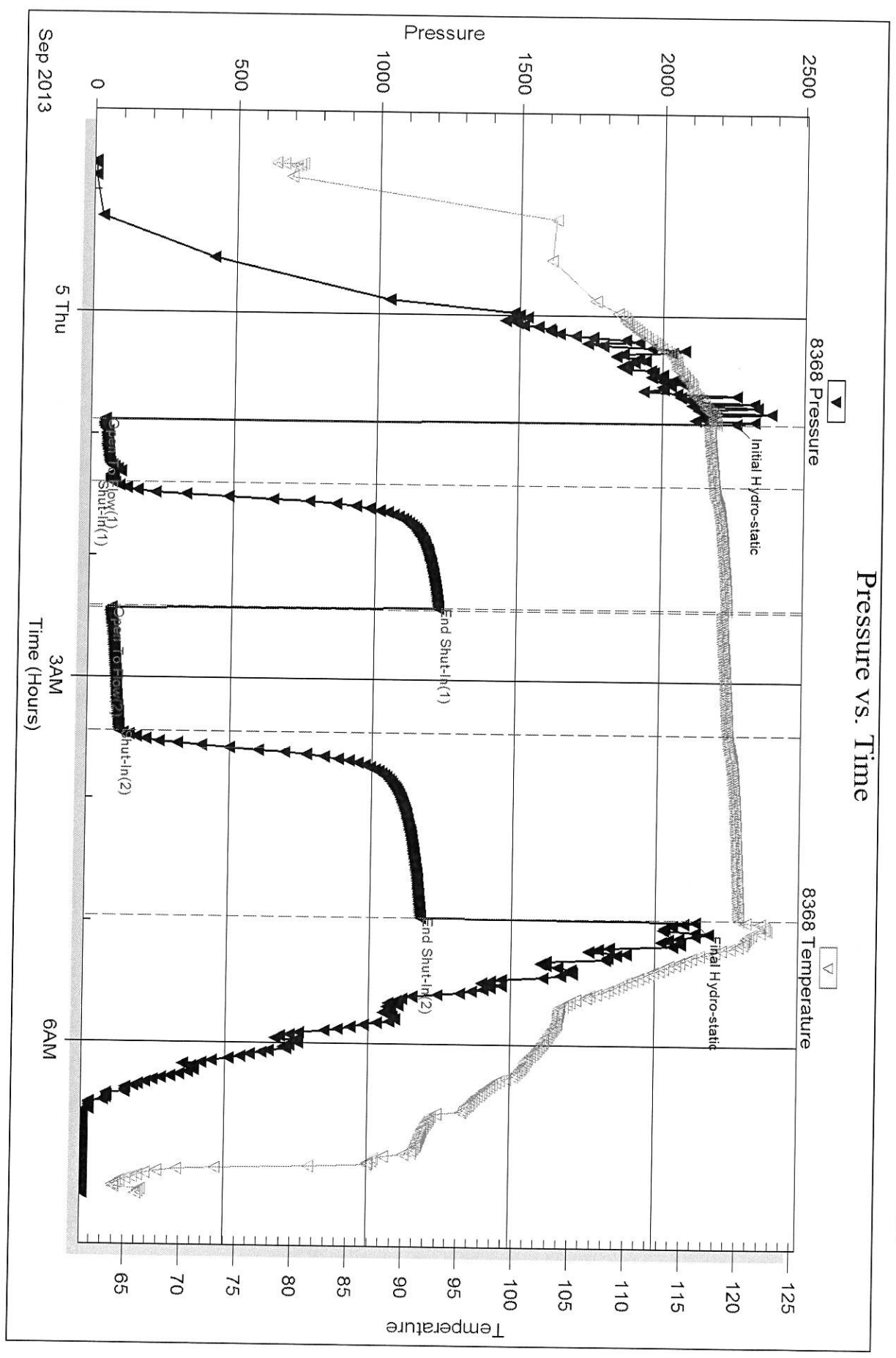
Num Gas Bombs: 0

Serial #:

Laboratory Name:

Laboratory Location:

Recovery Comments:





DRILL STEM TEST REPORT

Prepared For: **Landmark Resources Inc**

1616 S Voss Rd Ste 600
Houston, TX 77057

ATTN: Terry Mcleod

Gerstberger #1-30

30-17s-36w Wichita,KS

Start Date: 2013.09.05 @ 13:40:14

End Date: 2013.09.05 @ 22:35:39

Job Ticket #: 52848 DST #: 2

Trilobite Testing, Inc

PO Box 362 Hays, KS 67601

ph: 785-625-4778 fax: 785-625-5620



TRILOBITE TESTING INC.

1515 Commerce Parkway • Hays, Kansas 67601

Test Ticket

NO. 52847

Well Name & No. Gerstberger #1-30 Test No. #1 Date 9/5/13
 Company Landmark Resources Inc Elevation 3306 KB 3294 GL
 Address 1666 S. Voss Rd Ste 600 Houston, TX 77057
 Co. Rep / Geo. Tom Pronold Rig Martin #22
 Location: Sec. 30 Twp. 17 Rge. 36 Co. Wichita State Ks

Interval Tested 4416 4487 Zone Tested Marmaton
 Anchor Length 71 Drill Pipe Run 4165' Mud Wt. 9.3
 Top Packer Depth 4411 Drill Collars Run 238' Vis 51
 Bottom Packer Depth 4416 Wt. Pipe Run --- WL 8.8
 Total Depth 4487 Chlorides 3600 ppm System LCM #4

Blow Description 2 3/4" in blow
No return
1 1/2" in blow
No return

Rec	Feet of	%gas	%oil	%water	%mud
<u>70</u>	<u>Free Oil</u>		<u>100</u>		
<u>110</u>	<u>OCM</u>	<u>20</u>		<u>80</u>	

Rec Total 180' BHT 120' Gravity 25 API RW ---@ --- F Chlorides --- ppm

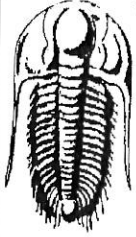
(A) Initial Hydrostatic <u>2262</u>	<input checked="" type="checkbox"/> Test 1250	T-On Location <u>22:10</u>
(B) First Initial Flow <u>49</u>	<input checked="" type="checkbox"/> Jars 250	T-Started <u>22:45</u>
(C) First Final Flow <u>72</u>	<input checked="" type="checkbox"/> Safety Joint 75	T-Open <u>00:53</u>
(D) Initial Shut-In <u>1224</u>	<input checked="" type="checkbox"/> Circ Sub <u>N/A</u>	T-Pulled <u>04:53</u>
(E) Second Initial Flow <u>78</u>	<input type="checkbox"/> Hourly Standby	T-Out <u>07:25</u>
(F) Second Final Flow <u>111</u>	<input checked="" type="checkbox"/> Mileage <u>62 RT</u> 96.10	Comments
(G) Final Shut-In <u>1177</u>	<input type="checkbox"/> Sampler	
(H) Final Hydrostatic <u>2142</u>	<input type="checkbox"/> Straddle	

Initial Open 30
 Initial Shut-In 60
 Final Flow 60
 Final Shut-In 90

Ruined Shale Packer
 Ruined Packer
 Extra Copies
 Sub Total 0
 Total 1671.10
 MP/DST Disc't

Sub Total 1671.10
 Approved By _____ Our Representative

Trilobite Testing Inc. shall not be liable for damaged of any kind of the property or personnel of the one for whom a test is made, or for any loss suffered or sustained, directly or indirectly, through the use of its equipment, or its statements or opinion concerning the results of any test. Tools lost or damaged in the hole shall be paid for at cost by the party for whom the test is made.



TRILOBITE TESTING, INC

DRILL STEM TEST REPORT

Landmark Resources Inc
 1616 S Voss Rd Ste 600
 Houston, TX 77057
 ATTN: Terry Mcleod

30-17s-36w Wichita,KS

Gerstberger #1-30

Job Ticket: 52848

DST#: 2

Test Start: 2013.09.05 @ 13:40:14

GENERAL INFORMATION:

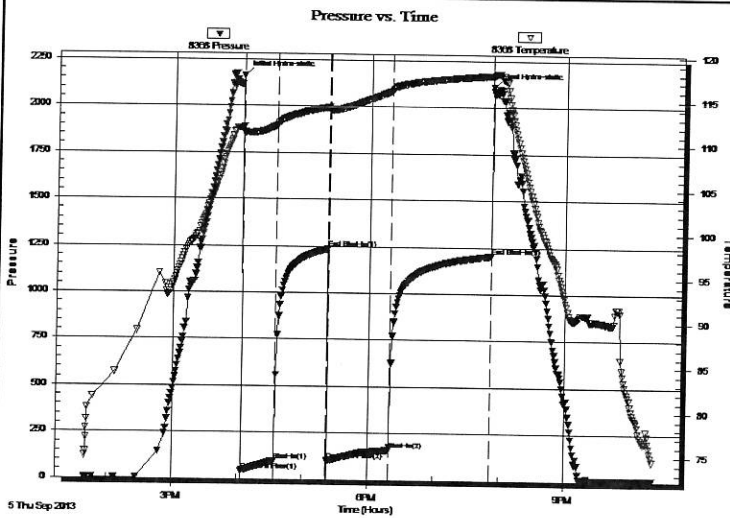
Formation: **Marmaton**
 Deviated: No Whipstock: ft (KB)
 Time Tool Opened: 16:03:39
 Time Test Ended: 22:35:39
 Test Type: Conventional Straddle (Reset)
 Tester: Shane McBride
 Unit No: 55
 Interval: **4335.00 ft (KB) To 4410.00 ft (KB) (TVD)**
 Total Depth: 4487.00 ft (KB) (TVD)
 Reference Elevations: 3306.00 ft (KB)
 3294.00 ft (CF)
 Hole Diameter: 7.88 inches Hole Condition: Fair
 KB to GR/CF: 12.00 ft

Serial #: 8368

Outside

Press@RunDepth: 159.29 psig @ 4336.00 ft (KB)
 Capacity: 8000.00 psig
 Start Date: 2013.09.05 End Date: 2013.09.05 Last Calib.: 2013.09.05
 Start Time: 13:40:14 End Time: 22:21:39
 Time On Btm: 2013.09.05 @ 16:03:09
 Time Off Btm: 2013.09.05 @ 19:52:39

TEST COMMENT: 4" blow
 No return
 5" blow
 No return



PRESSURE SUMMARY

Time (Min.)	Pressure (psig)	Temp (deg F)	Annotation
0	2160.95	111.96	Initial Hydro-static
1	43.15	111.19	Open To Flow (1)
31	96.31	112.14	Shut-In(1)
79	1236.08	114.21	End Shut-In(1)
80	99.85	113.80	Open To Flow (2)
137	159.29	116.08	Shut-In(2)
229	1204.44	117.86	End Shut-In(2)
230	2109.90	117.86	Final Hydro-static

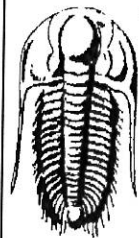
Recovery

Length (ft)	Description	Volume (bbl)
270.00	s w c m 20%w 80%m	1.62

Gas Rates

	Choke (inches)	Pressure (psig)	Gas Rate (Mcf/d)

* Recovery from multiple tests



TRILOBITE TESTING, INC

DRILL STEM TEST REPORT

Landmark Resources Inc

1616 S Voss Rd Ste 600
Houston, TX 77057

ATTN: Terry Mcleod

30-17s-36w Wichita, KS

Gerstberger #1-30

Job Ticket: 52848

DST#: 2

Test Start: 2013.09.05 @ 13:40:14

GENERAL INFORMATION:

Formation: **Marmaton**

Deviated: No Whipstock: ft (KB)

Time Tool Opened: 16:03:39

Time Test Ended: 22:35:39

Test Type: Conventional Straddle (Reset)

Tester: Shane McBride

Unit No: 55

Interval: **4335.00 ft (KB) To 4410.00 ft (KB) (TVD)**

Reference Elevations: 3306.00 ft (KB)

Total Depth: 4487.00 ft (KB) (TVD)

3294.00 ft (CF)

Hole Diameter: 7.88 inches Hole Condition: Fair

KB to GR/CF: 12.00 ft

Serial #: **6667** Inside

Press@RunDepth: psig @ 4336.00 ft (KB)

Capacity: 8000.00 psig

Start Date: 2013.09.05 End Date: 2013.09.05

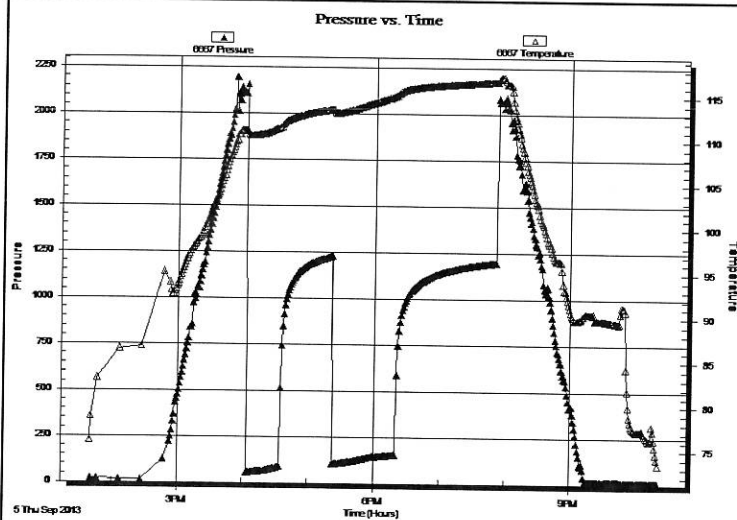
Last Calib.: 2013.09.05

Start Time: 13:40:16 End Time: 22:21:31

Time On Btm:

Time Off Btm:

TEST COMMENT: 4" blow
No return
5" blow
No return



PRESSURE SUMMARY

Time (Min.)	Pressure (psig)	Temp (deg F)	Annotation

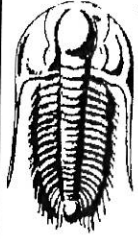
Recovery

Length (ft)	Description	Volume (bbl)
270.00	s w c m 20%w 80%m	1.62

* Recovery from multiple tests

Gas Rates

Choke (inches)	Pressure (psig)	Gas Rate (Mcf/d)



TRILOBITE
TESTING, INC.

DRILL STEM TEST REPORT

Landmark Resources Inc

1616 S Voss Rd Ste 600
Houston, TX 77057

ATTN: Terry McLeod

30-17s-36w Wichita, KS

Gerstberger #1-30

Job Ticket: 52848

DST#: 2

Test Start: 2013.09.05 @ 13:40:14

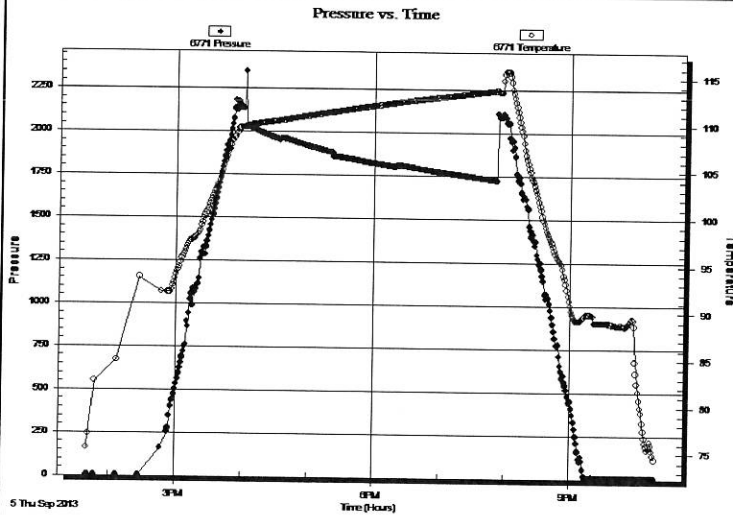
GENERAL INFORMATION:

Formation: Marmaton		Test Type: Conventional Straddle (Reset)
Deviated: No Whipstock:	ft (KB)	Tester: Shane McBride
Time Tool Opened: 16:03:39		Unit No: 55
Time Test Ended: 22:35:39		
Interval: 4335.00 ft (KB) To 4410.00 ft (KB) (TVD)		Reference Elevations: 3306.00 ft (KB)
Total Depth: 4487.00 ft (KB) (TVD)		3294.00 ft (CF)
Hole Diameter: 7.88 inches	Hole Condition: Fair	KB to GR/CF: 12.00 ft

Serial #: 6771 Below (Straddle)

Press@RunDepth: psig @ 4416.00 ft (KB)	Capacity: 8000.00 psig	
Start Date: 2013.09.05	End Date: 2013.09.05	Last Calib.: 2013.09.05
Start Time: 13:40:21	End Time: 22:18:36	Time On Btm: _____
		Time Off Btm: _____

TEST COMMENT: 4" blow
No return
5" blow
No return



PRESSURE SUMMARY

Time (Min.)	Pressure (psig)	Temp (deg F)	Annotation

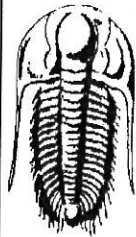
Recovery

Length (ft)	Description	Volume (bbl)
270.00	s w c m 20%w 80%m	1.62

* Recovery from multiple tests

Gas Rates

Choke (inches)	Pressure (psig)	Gas Rate (Mcf/d)



**TRILOBITE
TESTING, INC**

DRILL STEM TEST REPORT

TOOL DIAGRAM

Landmark Resources Inc

30-17s-36w Wichita,KS

1616 S Voss Rd Ste 600
Houston, TX 77057

Gerstberger #1-30

Job Ticket: 52848

DST#: 2

ATTN: Terry Mcleod

Test Start: 2013.09.05 @ 13:40:14

Tool Information

Drill Pipe:	Length: 4097.00 ft	Diameter: 3.80 inches	Volume: 57.47 bbl	Tool Weight: 1500.00 lb
Heavy Wt. Pipe:	Length: 0.00 ft	Diameter: 0.00 inches	Volume: 0.00 bbl	Weight set on Packer: 30000.00 lb
Drill Collar:	Length: 238.00 ft	Diameter: 2.25 inches	Volume: 1.17 bbl	Weight to Pull Loose: 92000.00 lb
			<u>Total Volume: 58.64 bbl</u>	Tool Chased 0.00 ft
Drill Pipe Above KB:	28.00 ft			String Weight: Initial 69000.00 lb
Depth to Top Packer:	4335.00 ft			Final 70000.00 lb
Depth to Bottom Packer:	4487.00 ft			
Interval between Packers:	152.00 ft			
Tool Length:	180.00 ft			
Number of Packers:	2	Diameter: 6.75 inches		

Tool Comments:

Tool Description

Tool Description	Length (ft)	Serial No.	Position	Depth (ft)	Accum. Lengths
Change Over Sub	1.00			4308.00	
Shut In Tool	5.00			4313.00	
Hydraulic tool	5.00			4318.00	
Jars	5.00			4323.00	
Safety Joint	3.00			4326.00	
Packer	5.00			4331.00	28.00 Bottom Of Top Packer
Packer	4.00			4335.00	
Stubb	1.00			4336.00	
Recorder	0.00	6667	Inside	4336.00	
Recorder	0.00	8368	Outside	4336.00	
Perforations	31.00			4367.00	
Change Over Sub	1.00			4368.00	
Drill Pipe	32.00			4400.00	
Change Over Sub	1.00			4401.00	
Perforations	5.00			4406.00	
Blank Off Sub	1.00			4407.00	
top of s packer	3.00			4410.00	
Packer - Shale	0.00			4410.00	
Stubb	1.00			4411.00	
Anchor	5.00			4416.00	
Recorder	0.00	6771	Below	4416.00	
Change Over Sub	1.00			4417.00	
Drill Pipe	64.00			4481.00	
Change Over Sub	1.00			4482.00	
Bullnose	5.00			4487.00	152.00 Bottom Packers & Anchor
Total Tool Length:	180.00				



TRILOBITE
TESTING, INC.

DRILL STEM TEST REPORT

FLUID SUMMARY

Landmark Resources Inc

30-17s-36w Wichita,KS

1616 S Voss Rd Ste 600
Houston, TX 77057

Gerstberger #1-30

Job Ticket: 52848

DST#: 2

ATTN: Terry Mcleod

Test Start: 2013.09.05 @ 13:40:14

Mud and Cushion Information

Mud Type: Gel Chem

Cushion Type:

Oil API:

0 deg API

Mud Weight: 9.00 lb/gal

Cushion Length:

ft

Water Salinity:

25000 ppm

Viscosity: 63.00 sec/qt

Cushion Volume:

bbbl

Water Loss: 8.74 in³

Gas Cushion Type:

Resistivity: 0.00 ohm.m

Gas Cushion Pressure:

psig

Salinity: 5000.00 ppm

Filter Cake: 1.00 inches

Recovery Information

Recovery Table

Length ft	Description	Volume bbl
270.00	s w c m 20%w 80%m	1.619

Total Length: 270.00 ft Total Volume: 1.619 bbl

Num Fluid Samples: 0

Num Gas Bombs: 0

Serial #:

Laboratory Name:

Laboratory Location:

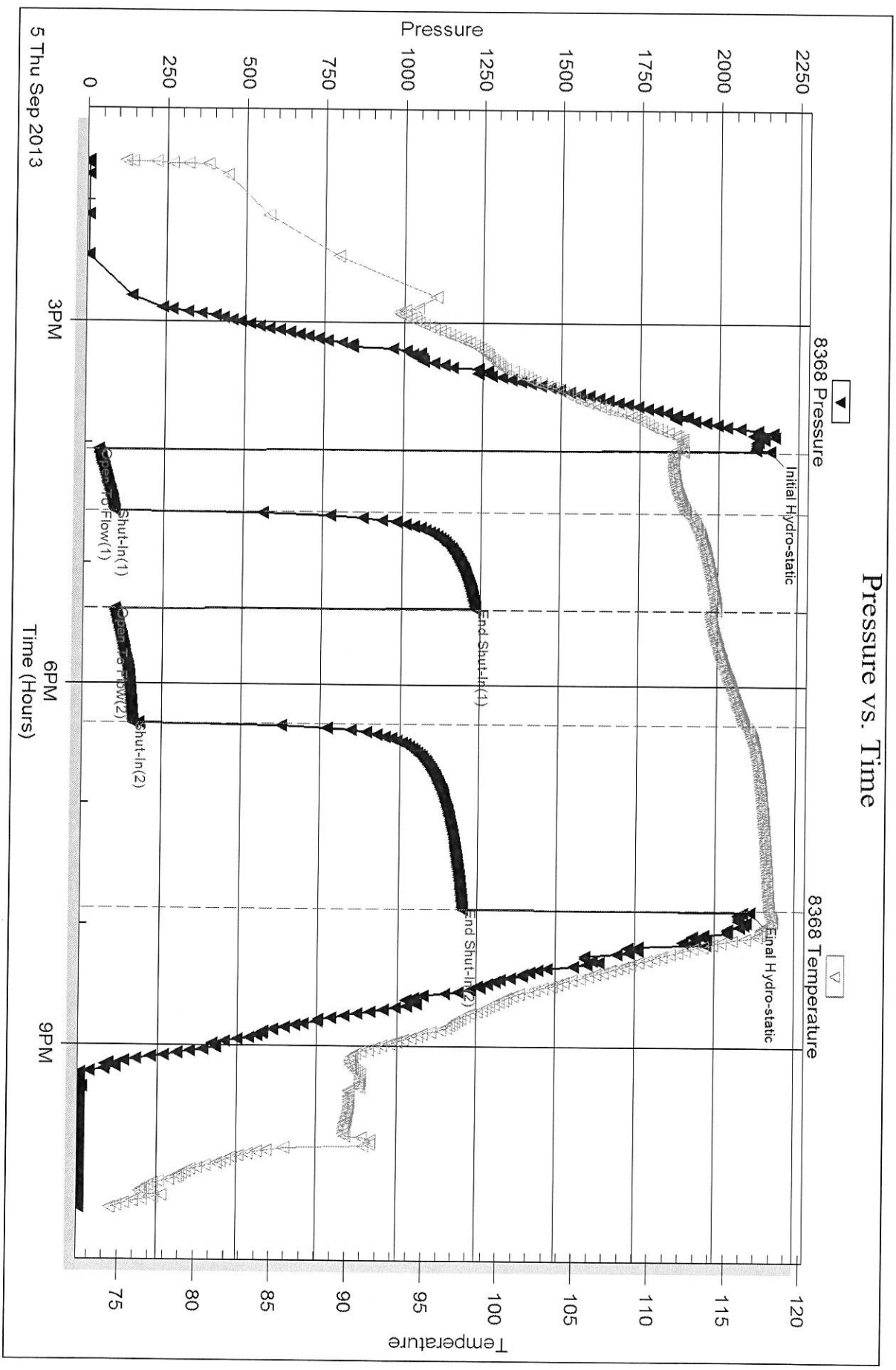
Recovery Comments: rw .247 @ 79*f =25,000 chlor

Serial #: 8368

Outside Landmark Resources Inc

Gerstberger #1-30

DST Test Number: 2



Triobite Testing, Inc

Ref. No: 52848

Printed: 2013.09.10 @ 10:32:56

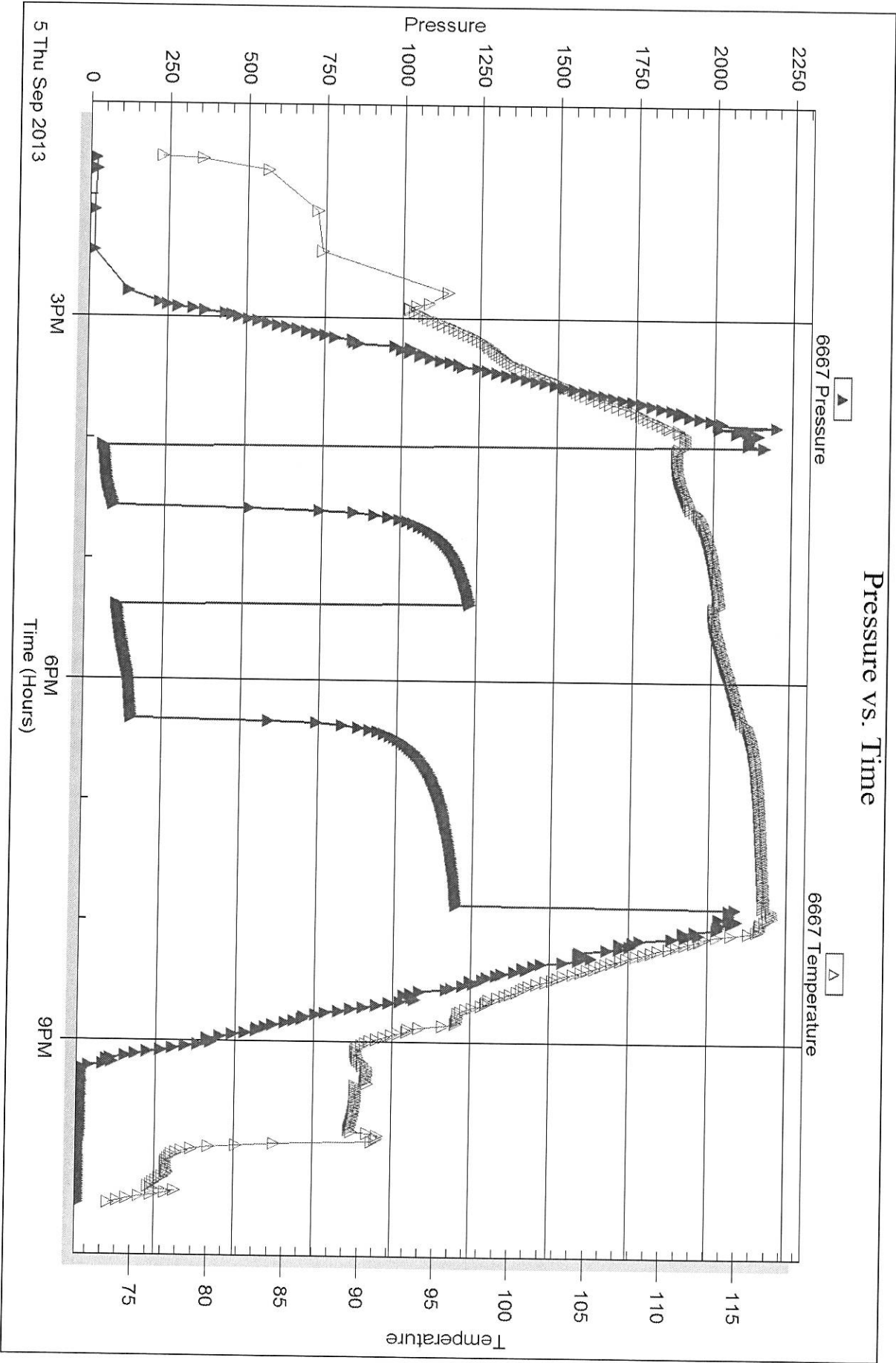
Serial #: 6667

Inside

Landmark Resources Inc

Gerstberger #1-30

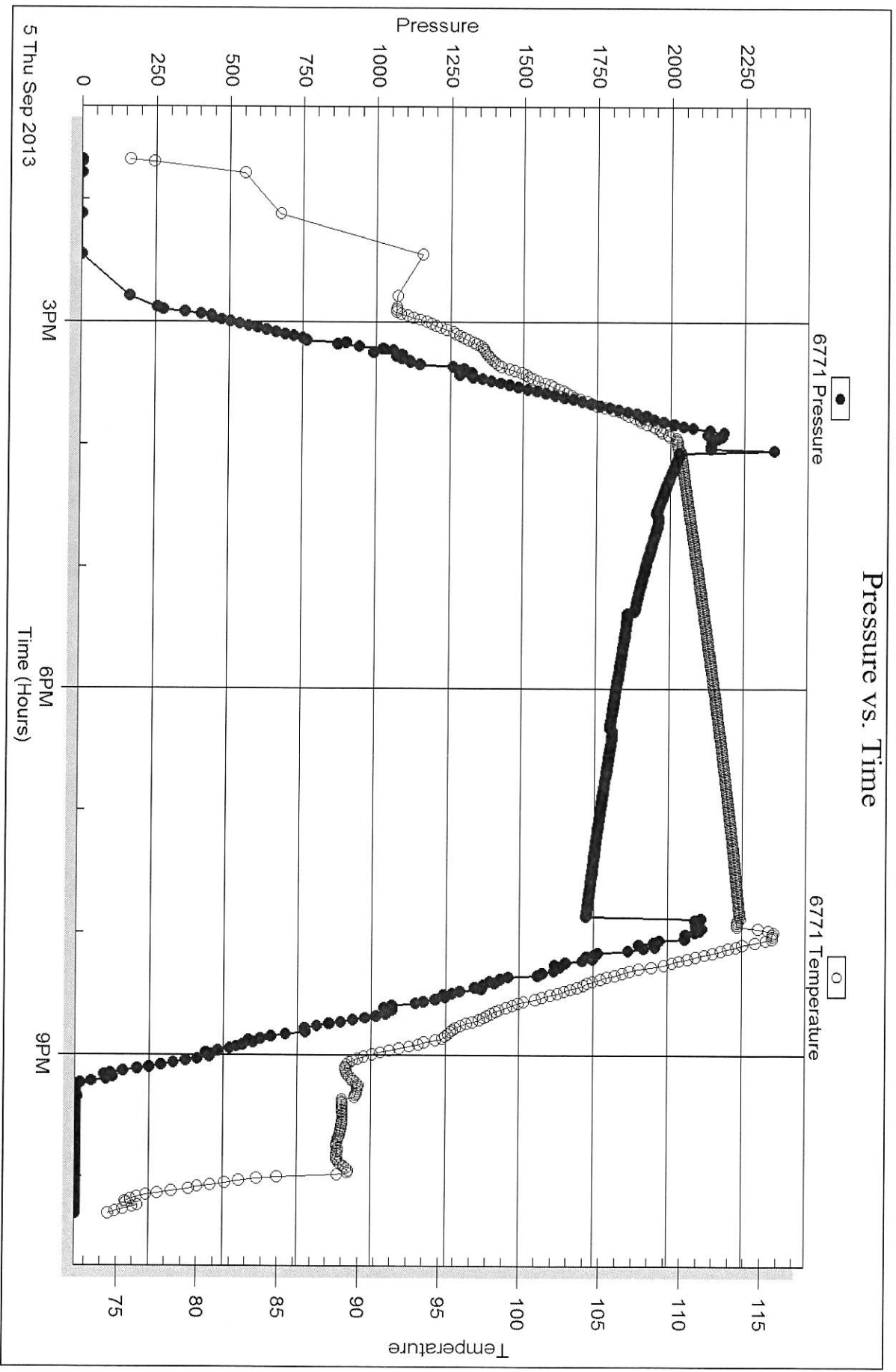
DST Test Number: 2

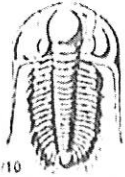


Trilobite Testing, Inc

Ref. No: 52848

Printed: 2013.09.10 @ 10:32:57





TRILOBITE TESTING INC.

1515 Commerce Parkway • Hays, Kansas 67601

Test Ticket

NO. 52848

Well Name & No. Gerstberger #1-30 Test No. #2 Date 9/5/13
 Company Landmark Resources Inc Elevation 3306 KB 3294 GL
 Address 1666 S. Voss Rd Ste 600, Houston, TX, 77057
 Co. Rep / Geo. Terry McLeod Rig Mudwin #22
 Location: Sec. 30 Twp. 17 Rge. 36 Co. Wichita State Ks

Interval Tested 4335 4410 Zone Tested Marmaton
 Anchor Length 75 Drill Pipe Run 4097 Mud Wt. 9.4
 Top Packer Depth 4330 Drill Collars Run 238 Vis 63
 Bottom Packer Depth (4410) 4335 Wt. Pipe Run --- WL 8.8
 Total Depth 4487 Chlorides 5000 ppm System LCM #4

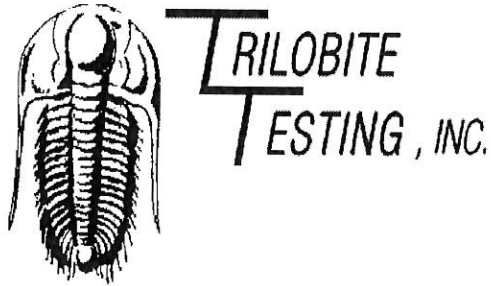
Blow Description 4" in blow
No return
5" in blow
No return

Rec	Feet of	SW cm	w/o. spots	%gas	%oil	%water	%mud
270'					20	80	
Rec	Feet of			%gas	%oil	%water	%mud
Rec	Feet of			%gas	%oil	%water	%mud
Rec	Feet of			%gas	%oil	%water	%mud

Rec Total 270' BHT 118° Gravity --- API RW 247 @ 79° F Chlorides 25000 ppm
 (A) Initial Hydrostatic 2160 Test 1250 T-On Location 13:20
 (B) First Initial Flow 43 Jars 250 T-Started 13:40
 (C) First Final Flow 96 Safety Joint 75 T-Open 16:05
 (D) Initial Shut-In 1236 Circ Sub N/C T-Pulled 19:50
 (E) Second Initial Flow 99 Hourly Standby T-Out 22:35
 (F) Second Final Flow 159 Mileage 62 RT 96.10 Comments
 (G) Final Shut-In 1204 Sampler
 (H) Final Hydrostatic 2109 Straddle 600 Ruined Shale Packer
 Shale Packer 250 Ruined Packer

Initial Open 30 Extra Packer
 Initial Shut-In 45 Extra Recorder
 Final Flow 60 Day Standby
 Final Shut-In 90 Accessibility
 Sub Total 2521.10 MP/DST Disc't

Approved By Terry McLeod Our Representative [Signature]
 TriLOBITE Testing Inc. shall not be liable for or damaged of any kind of the property or personnel of the one for whom a test is made, or for any loss suffered or sustained, directly or indirectly, through the use of its equipment, or its statements or opinions concerning the results of any test, tools lost or damaged in the hole shall be paid for at cost by the party for whom the test is made.



DRILL STEM TEST REPORT

Prepared For: **Landmark Resources Inc**

1616 S Voss Rd Ste 600
Houston, TX 77057

ATTN: Terry Mcleod

Gerstberger #1-30

30-17s-36w Wichita,KS

Start Date: 2013.09.08 @ 13:28:00

End Date: 2013.09.08 @ 20:48:39

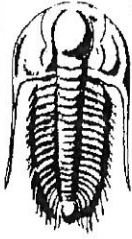
Job Ticket #: 53016 DST #: 3

Trilobite Testing, Inc

PO Box 362 Hays, KS 67601

ph: 785-625-4778 fax: 785-625-5620

Printed: 2013.09.10 @ 10:31:48



**TRILOBITE
TESTING, INC**

DRILL STEM TEST REPORT

Landmark Resources Inc
1616 S Voss Rd Ste 600
Houston, TX 77057
ATTN: Terry Mcleod

30-17s-36w Wichita,KS

Gerstberger #1-30

Job Ticket: 53016

DST#: 3

Test Start: 2013.09.08 @ 13:28:00

GENERAL INFORMATION:

Formation: **Morrow Sand**

Deviated: No Whipstock: ft (KB)

Time Tool Opened: 15:47:55

Time Test Ended: 20:48:39

Test Type: Conventional Straddle (Reset)

Tester: Will MacLean

Unit No: 58

Interval: 4724.00 ft (KB) To 4843.00 ft (KB) (TVD)

Reference Elevations: 3306.00 ft (KB)

Total Depth: 5000.00 ft (KB) (TVD)

3294.00 ft (CF)

Hole Diameter: 7.88 inches Hole Condition: Good

KB to GR/CF: 12.00 ft

Serial #: 8674

Inside

Press@RunDepth: 47.71 psig @ 4725.00 ft (KB)

Capacity: 8000.00 psig

Start Date: 2013.09.08

End Date: 2013.09.08

Last Calib.: 2013.09.08

Start Time: 13:28:00

End Time: 20:48:39

Time On Btm: 2013.09.08 @ 15:47:25

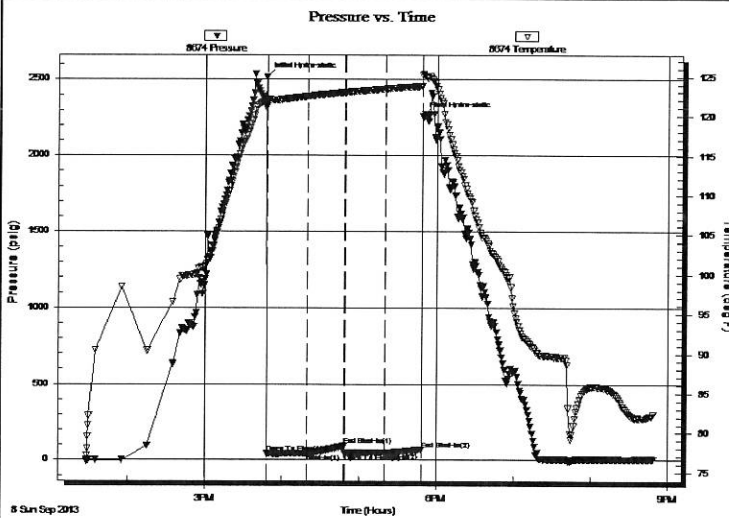
Time Off Btm: 2013.09.08 @ 17:48:54

TEST COMMENT: IF- 1/2" Blow Died Back to a Weak Surface Blow

IS- No Blow

FF- No Blow

FS- No Blow



PRESSURE SUMMARY

Time (Min.)	Pressure (psig)	Temp (deg F)	Annotation
0	2512.90	121.95	Initial Hydro-static
1	40.37	121.29	Open To Flow (1)
32	44.10	122.53	Shut-In(1)
61	93.76	123.02	End Shut-In(1)
61	45.11	123.01	Open To Flow (2)
93	47.71	123.48	Shut-In(2)
122	70.23	123.81	End Shut-In(2)
122	2260.46	125.18	Final Hydro-static

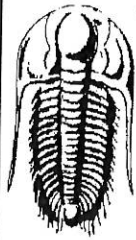
Recovery

Length (ft)	Description	Volume (bbl)
15.00	WCM 4%w 96%m	0.07

* Recovery from multiple tests

Gas Rates

	Choke (inches)	Pressure (psig)	Gas Rate (Mcf/d)



TRILOBITE TESTING, INC.

DRILL STEM TEST REPORT

Landmark Resources Inc

30-17s-36w Wichita,KS

1616 S Voss Rd Ste 600
Houston, TX 77057

Gerstberger #1-30

Job Ticket: 53016

DST#: 3

ATTN: Terry McLeod

Test Start: 2013.09.08 @ 13:28:00

GENERAL INFORMATION:

Formation: **Morrow Sand**

Deviated: No Whipstock: ft (KB)

Time Tool Opened: 15:47:55

Time Test Ended: 20:48:39

Test Type: Conventional Straddle (Reset)

Tester: Will MacLean

Unit No: 58

Interval: 4724.00 ft (KB) To 4843.00 ft (KB) (TVD)

Total Depth: 5000.00 ft (KB) (TVD)

Reference Elevations: 3306.00 ft (KB)

Hole Diameter: 7.88 inches Hole Condition: Good

3294.00 ft (CF)

KB to GR/CF: 12.00 ft

Serial #: 8355 Outside

Press@RunDepth: psig @ 4725.00 ft (KB)

Capacity: 8000.00 psig

Start Date: 2013.09.08 End Date: 2013.09.08

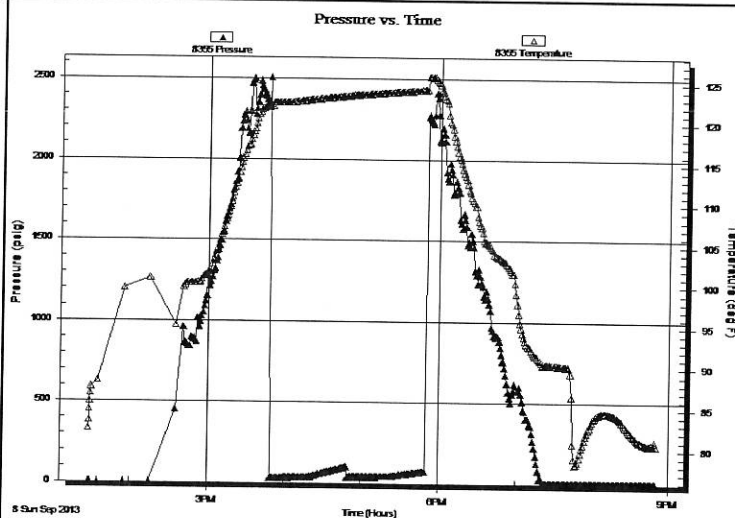
Last Calib.: 2013.09.08

Start Time: 13:28:05 End Time: 20:50:14

Time On Btm:

Time Off Btm:

TEST COMMENT: IF- 1/2" Blow Died Back to a Weak Surface Blow
IS- No Blow
FF- No Blow
FSI- No Blow



PRESSURE SUMMARY

Time (Min.)	Pressure (psig)	Temp (deg F)	Annotation

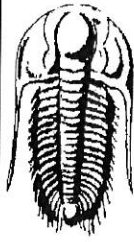
Recovery

Length (ft)	Description	Volume (bbl)
15.00	WCM 4%w 96%m	0.07

Gas Rates

Choke (inches)	Pressure (psig)	Gas Rate (Mcf/d)

* Recovery from multiple tests



TRILOBITE TESTING, INC.

DRILL STEM TEST REPORT

Landmark Resources Inc
 1616 S Voss Rd Ste 600
 Houston, TX 77057
 ATTN: Terry Mcleod

30-17s-36w Wichita,KS
Gerstberger #1-30
 Job Ticket: 53016 **DST#: 3**
 Test Start: 2013.09.08 @ 13:28:00

GENERAL INFORMATION:

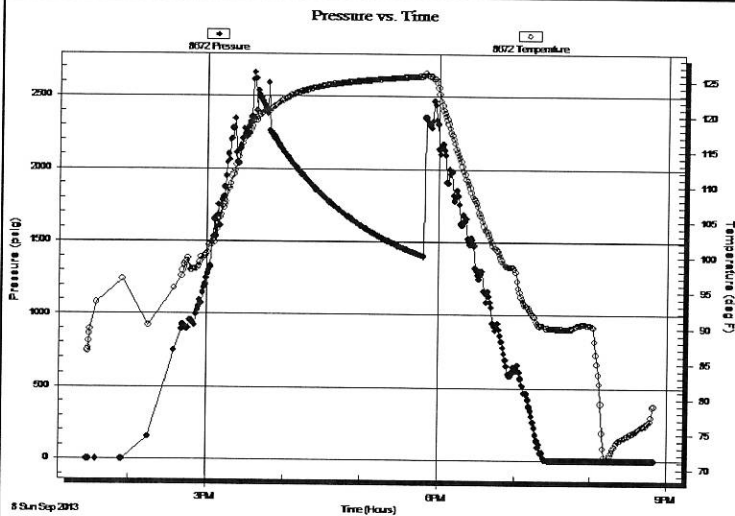
Formation: **Morrow Sand**
 Deviated: No Whipstock: ft (KB)
 Time Tool Opened: 15:47:55
 Time Test Ended: 20:48:39
 Interval: **4724.00 ft (KB) To 4843.00 ft (KB) (TVD)**
 Total Depth: 5000.00 ft (KB) (TVD)
 Hole Diameter: 7.88 inches Hole Condition: Good

Test Type: Conventional Straddle (Reset)
 Tester: Will MacLean
 Unit No: 58
 Reference Elevations: 3306.00 ft (KB)
 3294.00 ft (CF)
 KB to GR/CF: 12.00 ft

Serial #: 8672 Below (Straddle)

Press@RunDepth: psig @ 4844.00 ft (KB)
 Start Date: 2013.09.08 End Date: 2013.09.08
 Start Time: 13:28:05 End Time: 20:49:59
 Capacity: 8000.00 psig
 Last Calib.: 2013.09.08
 Time On Btm:
 Time Off Btm:

TEST COMMENT: IF- 1/2" Blow Died Back to a Weak Surface Blow
 IS- No Blow
 FF- No Blow
 FSI- No Blow



PRESSURE SUMMARY

Time (Min.)	Pressure (psig)	Temp (deg F)	Annotation

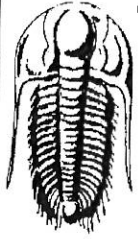
Recovery

Length (ft)	Description	Volume (bbl)
15.00	WCM 4%w 96%m	0.07

Gas Rates

Choke (inches)	Pressure (psig)	Gas Rate (Mcf/d)

* Recovery from multiple tests



TRILOBITE
TESTING, INC.

DRILL STEM TEST REPORT

TOOL DIAGRAM

Landmark Resources Inc

30-17s-36w Wichita,KS

1616 S Voss Rd Ste 600
Houston, TX 77057

Gerstberger #1-30

Job Ticket: 53016

DST#: 3

ATTN: Terry Mcleod

Test Start: 2013.09.08 @ 13:28:00

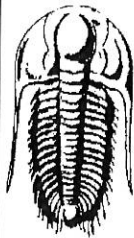
Tool Information

Drill Pipe:	Length: 4478.00 ft	Diameter: 3.80 inches	Volume: 62.81 bbl	Tool Weight: 2000.00 lb
Heavy Wt. Pipe:	Length: 0.00 ft	Diameter: 0.00 inches	Volume: 0.00 bbl	Weight set on Packer: 28000.00 lb
Drill Collar:	Length: 238.00 ft	Diameter: 2.25 inches	Volume: 1.17 bbl	Weight to Pull Loose: 8000.00 lb
			<u>Total Volume: 63.98 bbl</u>	Tool Chased ft
Drill Pipe Above KB:	20.00 ft			String Weight: Initial 78000.00 lb
Depth to Top Packer:	4724.00 ft			Final 78000.00 lb
Depth to Bottom Packer:	4843.00 ft			
Interval between Packers:	119.00 ft			
Tool Length:	310.00 ft			
Number of Packers:	3	Diameter: 6.75 inches		

Tool Comments:

Tool Description

Tool Description	Length (ft)	Serial No.	Position	Depth (ft)	Accum. Lengths
Change Over Sub	1.00			4697.00	
Shut In Tool	5.00			4702.00	
Hydraulic tool	5.00			4707.00	
Jars	5.00			4712.00	
Safety Joint	3.00			4715.00	
Packer	5.00			4720.00	28.00 Bottom Of Top Packer
Packer	4.00			4724.00	
Stubb	1.00			4725.00	
Recorder	0.00	8355	Outside	4725.00	
Recorder	0.00	8674	Inside	4725.00	
Perforations	17.00			4742.00	
Change Over Sub	1.00			4743.00	
Drill Pipe	95.00			4838.00	
Change Over Sub	1.00			4839.00	
Blank Off Sub	1.00			4840.00	
Top of S Packer	3.00			4843.00	119.00 Tool Interval
Packer	0.00			4843.00	
Stubb	1.00			4844.00	
Recorder	0.00	8672	Below	4844.00	
Perforations	1.00			4845.00	
Change Over Sub	1.00			4846.00	
Drill Pipe	157.00			5003.00	
Change Over Sub	1.00			5004.00	
Bullnose	2.00			5006.00	163.00 Bottom Packers & Anchor
Total Tool Length:	310.00				



TRILOBITE TESTING, INC

DRILL STEM TEST REPORT

FLUID SUMMARY

Landmark Resources Inc

30-17s-36w Wichita,KS

1616 S Voss Rd Ste 600
Houston, TX 77057

Gerstberger #1-30

Job Ticket: 53016

DST#: 3

ATTN: Terry Mcleod

Test Start: 2013.09.08 @ 13:28:00

Mud and Cushion Information

Mud Type: Gel Chem

Cushion Type:

Oil API:

deg API

Mud Weight: 10.00 lb/gal

Cushion Length:

ft

Water Salinity:

ppm

Viscosity: 50.00 sec/qt

Cushion Volume:

bbl

Water Loss: 10.74 in³

Gas Cushion Type:

Resistivity: 0.00 ohm.m

Gas Cushion Pressure:

psig

Salinity: 7000.00 ppm

Filter Cake: 1.00 inches

Recovery Information

Recovery Table

Length ft	Description	Volume bbl
15.00	WCM 4%w 96%m	0.074

Total Length: 15.00 ft Total Volume: 0.074 bbl

Num Fluid Samples: 0

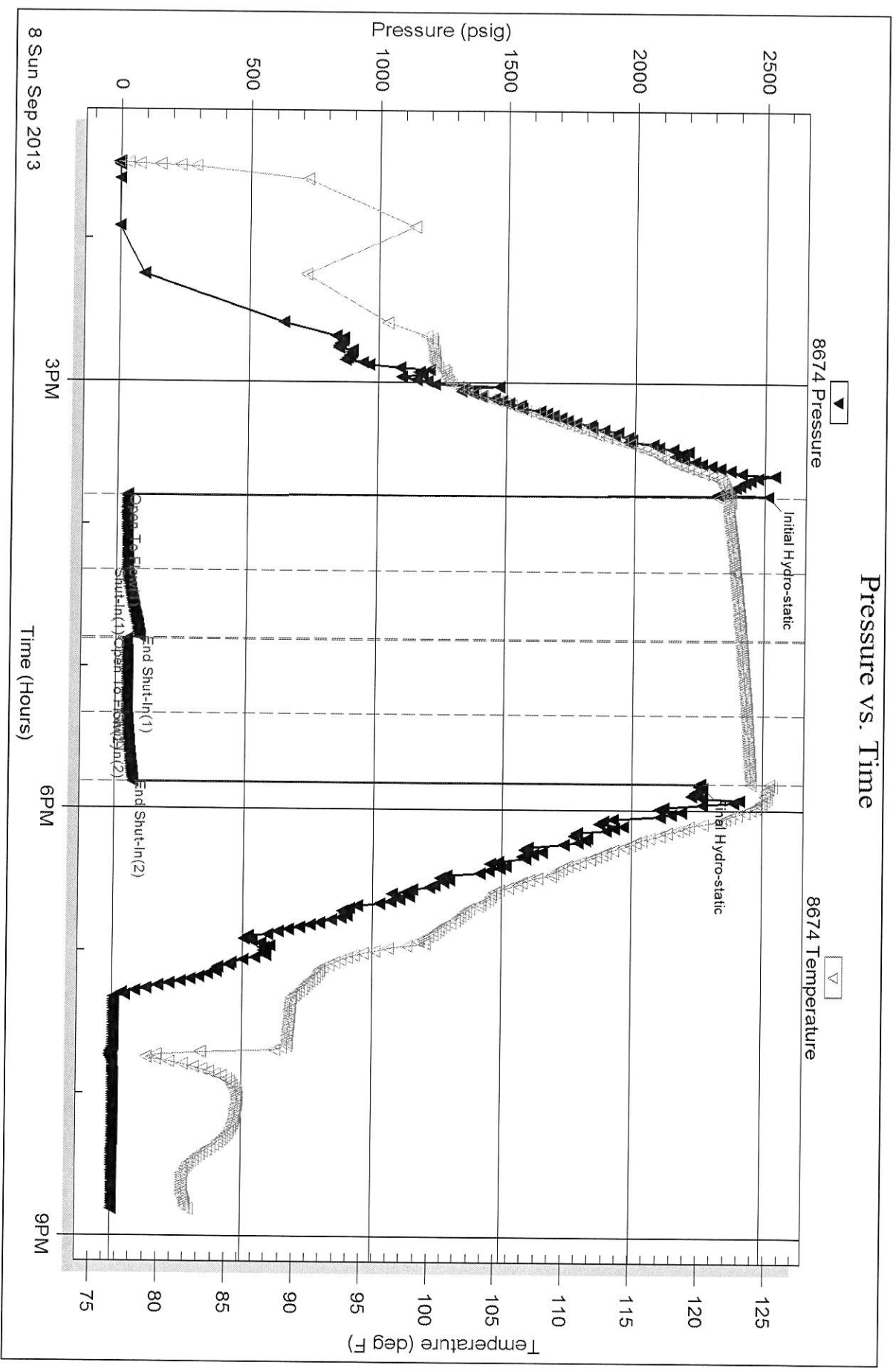
Num Gas Bombs: 0

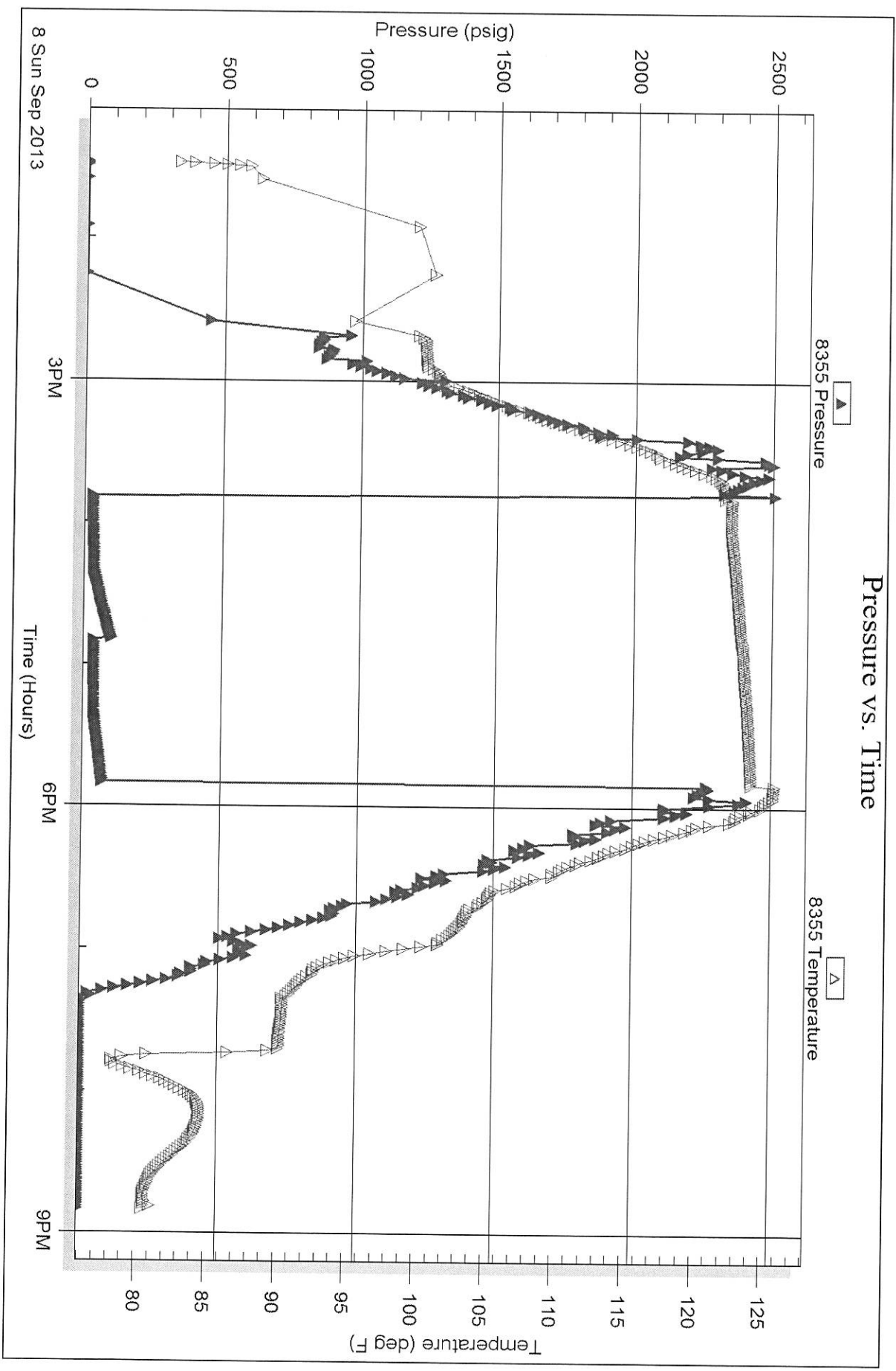
Serial #:

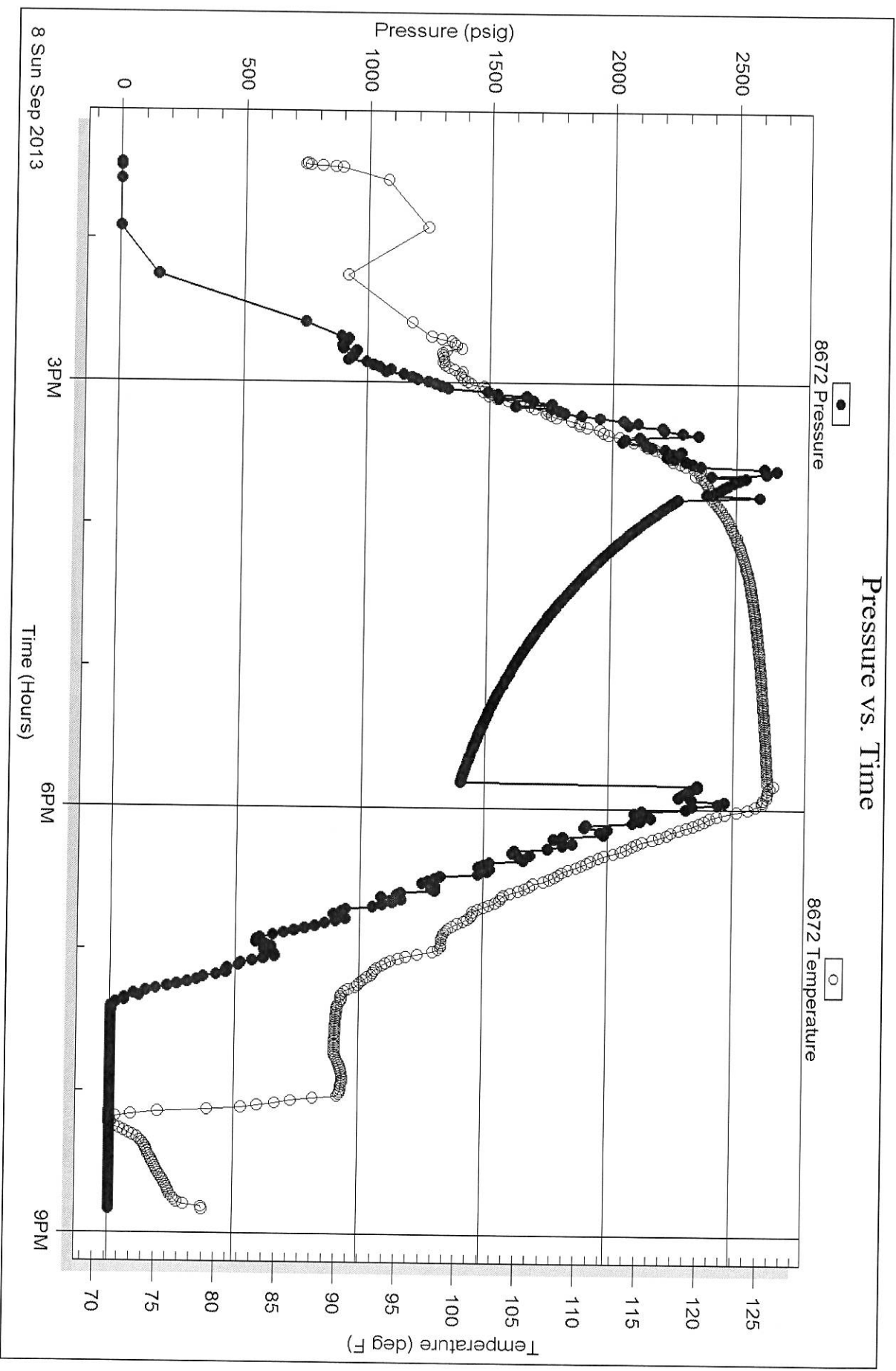
Laboratory Name:

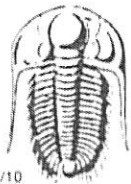
Laboratory Location:

Recovery Comments:









TRILOBITE TESTING INC.

1515 Commerce Parkway • Hays, Kansas 67601

Test Ticket

NO. 53016

Well Name & No. Gerstberger #1-30 Test No. DST #3 Date 9-8-13
 Company Landmark Resources Inc Elevation 3306 KB 3294 GL
 Address 1616 S. Voss Rd Ste 600 Houston TX 77057
 Co. Rep / Geo. Terry McLead Rig Martin Rig #22
 Location: Sec. 30 Twp. 17 Rge. 36 Co. Wichita State KS

Interval Tested 4724-4843 Zone Tested Morrow Sand
 Anchor Length 119 Drill Pipe Run 4478 Mud Wt. 9.5
 Top Packer Depth 4724 Drill Collars Run 238 Vis 50
 Bottom Packer Depth 4843 Wt. Pipe Run 0 WL 10.8
 Total Depth 5000RTD 5006 LTD Chlorides 7000 ppm System LCM 416

Blow Description IF - 1/2 Blow Dried Back to a Weak Surface Blow
IST - No Blow
FF - No Blow
FST - No Blow

Rec	Feet of	%gas	%oil	%water	%mud
<u>15</u>	<u>A WCM</u>			<u>4</u>	<u>96</u>
Rec	Feet of	%gas	%oil	%water	%mud
Rec	Feet of	%gas	%oil	%water	%mud
Rec	Feet of	%gas	%oil	%water	%mud

Rec Total 15 BHT 122 Gravity _____ API RW _____ @ _____ ° F Chlorides _____ ppm

(A) Initial Hydrostatic 2512 Test 1250 T-On Location 10:40
 (B) First Initial Flow 40 Jars 250 T-Started 13:28
 (C) First Final Flow 44 Safety Joint 75 T-Open 15:47
 (D) Initial Shut-In 93 Circ Sub NIC T-Pulled 17:48
 (E) Second Initial Flow 45 Hourly Standby _____ T-Out 20:48
 (F) Second Final Flow 47 Mileage 66 R/T 96.10 Comments _____
 (G) Final Shut-In 70 Sampler _____
 (H) Final Hydrostatic 2260 Straddle 600 Ruined Shale Packer _____
 Shale Packer 250 Ruined Packer _____
 Extra Packer _____ Extra Copies _____
 Extra Recorder _____ Sub Total 0
 Day Standby _____ Total 2521.10
 Accessibility _____ MP/DST Disc't _____

Initial Open 30
 Initial Shut-In 30
 Final Flow 30
 Final Shut-In 30
 Sub Total 2521.10

Approved By Terry McLead Our Representative Nick Man

Trilobite Testing Inc. shall not be liable for damaged of any kind of the property or personnel of the one for whom a test is made, or for any loss suffered or sustained, directly or indirectly, through the use of its equipment, or its statements or opinion concerning the results of any test, tools lost or damaged in the hole shall be paid for at cost by the party for whom the test is made.