



DRILL STEM TEST REPORT

Prepared For: **Carrie Exploration & Development & General Partner**
210 W 22nd Hays KS 67601

ATTN: Herb Deines

Peace Creek C-1

25-22s-10w Reno

Start Date: 2013.10.27 @ 21:00:00

End Date: 2013.10.28 @ 02:40:00

Job Ticket #: 18451 DST #: 2

Superior Testers Enterprises LLC
PO Box 138 Great Bend KS 67530
1-800-792-6902

Printed: 2013.10.28 @ 03:04:34



DRILL STEM TEST REPORT

Carrie Exploration & Development & General Partnership
210 W 22nd Hays KS 67601

25-22s-10w Reno

Peace Creek C-1

Job Ticket: 18451

DST#: 2

ATTN: Herb Deines

Test Start: 2013.10.27 @ 21:00:00

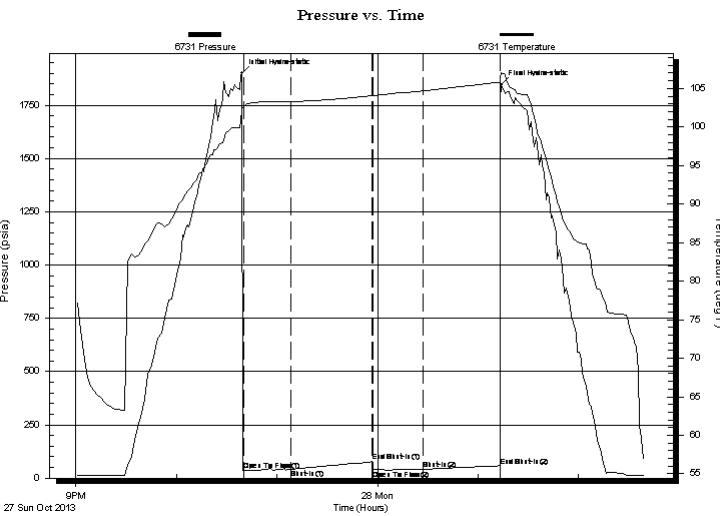
GENERAL INFORMATION:

Formation: **Viola**
 Deviated: No Whipstock: ft (KB)
 Test Type: Conventional Bottom Hole (Initial)
 Time Tool Opened: 22:40:00 Tester: Jared Scheck
 Time Test Ended: 02:40:00 Unit No: 3320-Great Bend-
 Interval: **3700.00 ft (KB) To 3720.00 ft (KB) (TVD)** Reference Elevations: 1750.00 ft (KB)
 Total Depth: 3720.00 ft (KB) (TVD) 1740.00 ft (CF)
 Hole Diameter: 7.88 inches Hole Condition: Fair KB to GR/CF: 10.00 ft

Serial #: 6731

Press@RunDepth: 40.78 psia @ ft (KB) Capacity: 5000.00 psia
 Start Date: 2013.10.27 End Date: 2013.10.28 Last Calib.: 2013.10.28
 Start Time: 21:00:00 End Time: 02:40:00 Time On Btm: 2013.10.27 @ 22:39:00
 Time Off Btm: 2013.10.28 @ 01:14:00

TEST COMMENT: 1st Opening 30 Minutes-Weak surface blow built 1/2 inch into water in 30 minutes
 1st Shut-in 45 Minutes-No blow back
 2nd Opening 30 Minutes-Very weak surface blow flushed tool good surge built 1/2 inch into water in 30 minutes
 2nd Shut-in 45 Minutes-No blow back



PRESSURE SUMMARY

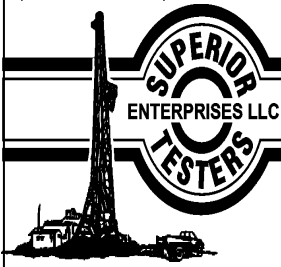
Time (Min.)	Pressure (psia)	Temp (deg F)	Annotation
0	1899.87	102.36	Initial Hydro-static
1	35.00	102.66	Open To Flow (1)
30	40.72	103.31	Shut-In(1)
78	76.76	104.06	End Shut-In(1)
79	38.46	104.07	Open To Flow (2)
108	40.78	104.67	Shut-In(2)
154	57.70	105.82	End Shut-In(2)
155	1846.13	107.08	Final Hydro-static

Recovery

Length (ft)	Description	Volume (bbl)
15.00	mud	0.21

Gas Rates

	Choke (inches)	Pressure (psia)	Gas Rate (Mcf/d)



DRILL STEM TEST REPORT

Carrie Exploration & Development & General Partnership
210 W 22nd Hays KS 67601

25-22s-10w Reno

Peace Creek C-1

Job Ticket: 18451

DST#: 2

ATTN: Herb Deines

Test Start: 2013.10.27 @ 21:00:00

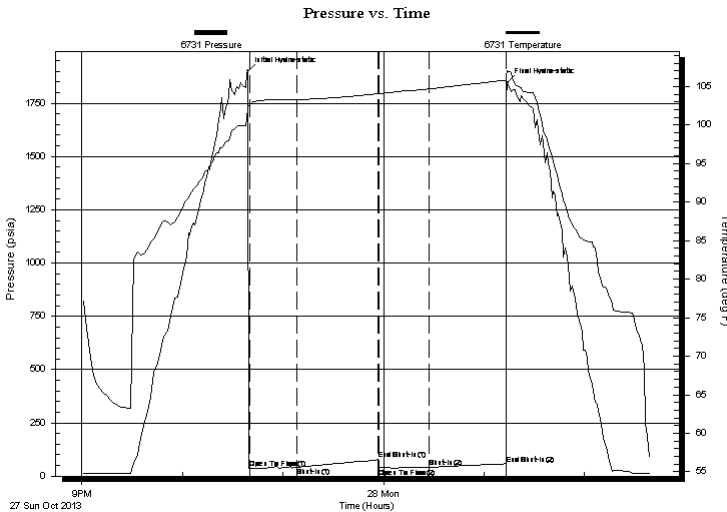
GENERAL INFORMATION:

Formation: **Viola**
 Deviated: No Whipstock: ft (KB)
 Test Type: Conventional Bottom Hole (Initial)
 Time Tool Opened: 22:40:00 Tester: Jared Scheck
 Time Test Ended: 02:40:00 Unit No: 3320-Great Bend-
 Interval: **3700.00 ft (KB) To 3720.00 ft (KB) (TVD)** Reference Elevations: 1750.00 ft (KB)
 Total Depth: 3720.00 ft (KB) (TVD) 1740.00 ft (CF)
 Hole Diameter: 7.88 inches Hole Condition: Fair KB to GR/CF: 10.00 ft

Serial #: 8159

Press@RunDepth: 59.25 psia @ ft (KB) Capacity: 5000.00 psia
 Start Date: 2013.10.27 End Date: 2013.10.28 Last Calib.: 2013.10.28
 Start Time: 21:00:00 End Time: 02:40:00 Time On Btm: 2013.10.27 @ 22:39:00
 Time Off Btm: 2013.10.28 @ 01:14:00

TEST COMMENT: 1st Opening 30 Minutes-Weak surface blow built 1/2 inch into water in 30 minutes
 1st Shut-in 45 Minutes-No blow back
 2nd Opening 30 Minutes-Very weak surface blow flushed tool good surge built 1/2 inch into water in 30 minutes
 2nd Shut-in 45 Minutes-No blow back



PRESSURE SUMMARY			
Time (Min.)	Pressure (psia)	Temp (deg F)	Annotation
0	1904.65	102.17	Initial Hydro-static
1	42.26	102.32	Open To Flow (1)
31	44.74	102.21	Shut-In(1)
77	76.06	103.85	End Shut-In(1)
80	44.88	103.94	Open To Flow (2)
109	45.79	104.54	Shut-In(2)
154	59.25	106.41	End Shut-In(2)
155	1837.24	107.33	Final Hydro-static

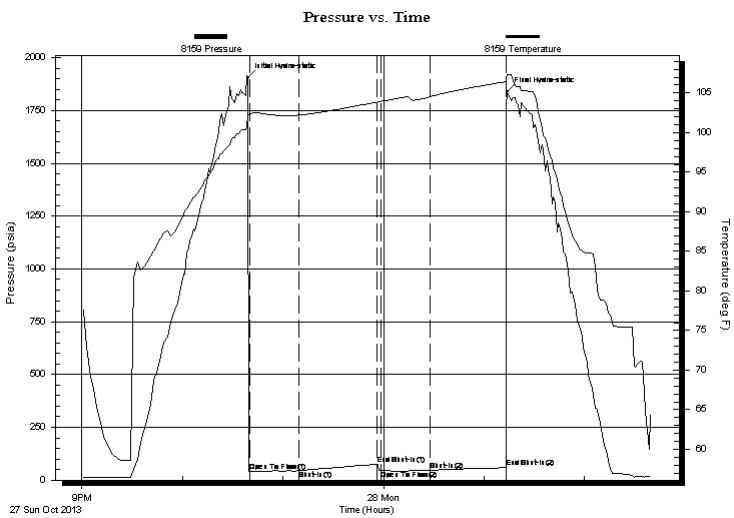
Recovery

Length (ft)	Description	Volume (bbl)
15.00	mud	0.21

Gas Rates

	Choke (inches)	Pressure (psia)	Gas Rate (Mcf/d)

Length	Recovery Table	Volume
Length	Description	Volume





DRILL STEM TEST REPORT

TOOL DIAGRAM

Carrie Exploration & Development & General Partnership
210 W 22nd Hays KS 67601

25-22s-10w Reno

Peace Creek C-1

Job Ticket: 18451

DST#: 2

ATTN: Herb Deines

Test Start: 2013.10.27 @ 21:00:00

Tool Information

Drill Pipe:	Length: 3694.00 ft	Diameter: 3.80 inches	Volume: 51.82 bbl	Tool Weight: 1000.00 lb
Heavy Wt. Pipe:	Length: 0.00 ft	Diameter: 0.00 inches	Volume: 0.00 bbl	Weight set on Packer: 20000.00 lb
Drill Collar:	Length: 0.00 ft	Diameter: 0.00 inches	Volume: 0.00 bbl	Weight to Pull Loose: 58000.00 lb
			<u>Total Volume: 51.82 bbl</u>	Tool Chased 0.00 ft
Drill Pipe Above KB:	14.00 ft			String Weight: Initial 47000.00 lb
Depth to Top Packer:	3700.00 ft			Final 47000.00 lb
Depth to Bottom Packer:	ft			
Interval between Packers:	20.00 ft			
Tool Length:	40.00 ft			
Number of Packers:	2	Diameter: 6.75 inches		
Tool Comments:				

Tool Description	Length (ft)	Serial No.	Position	Depth (ft)	Accum. Lengths
------------------	-------------	------------	----------	------------	----------------

Shut-In Tool	5.00			3685.00	
Hydrolic Tool	5.00			3690.00	
Packer	5.00			3695.00	20.00 Bottom Of Top Packer
Packer	5.00			3700.00	
Anchor	15.00			3715.00	
Recorder	1.00		Inside	3716.00	
Recorder	1.00		Outside	3717.00	
Bullnose	3.00			3720.00	20.00 Bottom Packers & Anchor

Total Tool Length: 40.00



DRILL STEM TEST REPORT

FLUID SUMMARY

Carrie Exploration & Development & General Partnership
210 W 22nd Hays KS 67601

25-22s-10w Reno

Peace Creek C-1

Job Ticket: 18451

DST#: 2

ATTN: Herb Deines

Test Start: 2013.10.27 @ 21:00:00

Mud and Cushion Information

Mud Type: Gel Chem

Mud Weight: lb/gal

Viscosity: sec/qt

Water Loss: in³

Resistivity: ohm.m

Salinity: ppm

Filter Cake: inches

Cushion Type:

Cushion Length: ft

Cushion Volume: bbl

Gas Cushion Type:

Gas Cushion Pressure: psia

Oil API:

Water Salinity: ppm

deg API

Recovery Information

Recovery Table

Length ft	Description	Volume bbl
15.00	mud	0.210

Total Length: 15.00 ft Total Volume: 0.210 bbl

Num Fluid Samples: 0

Num Gas Bombs: 0

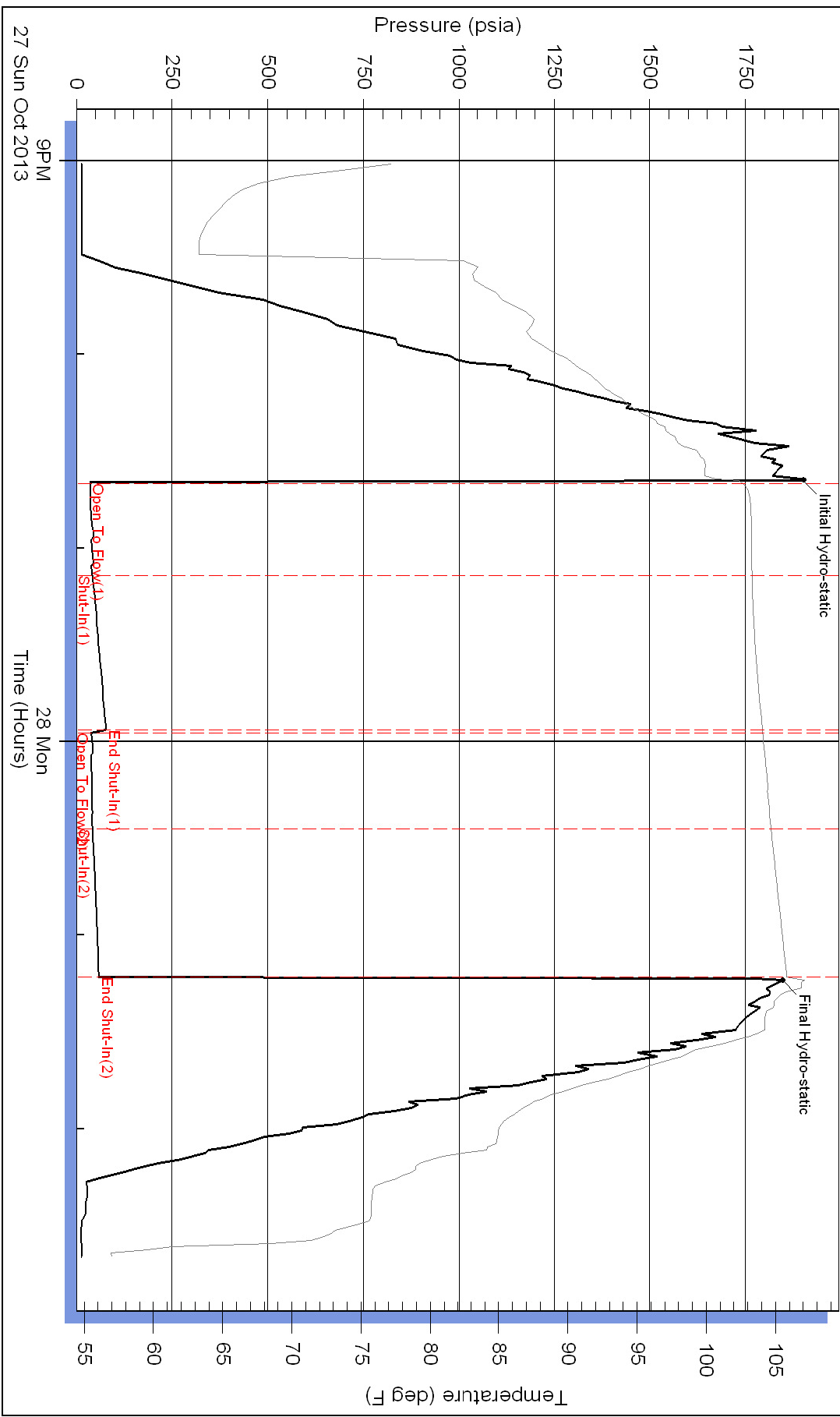
Serial #:

Laboratory Name:

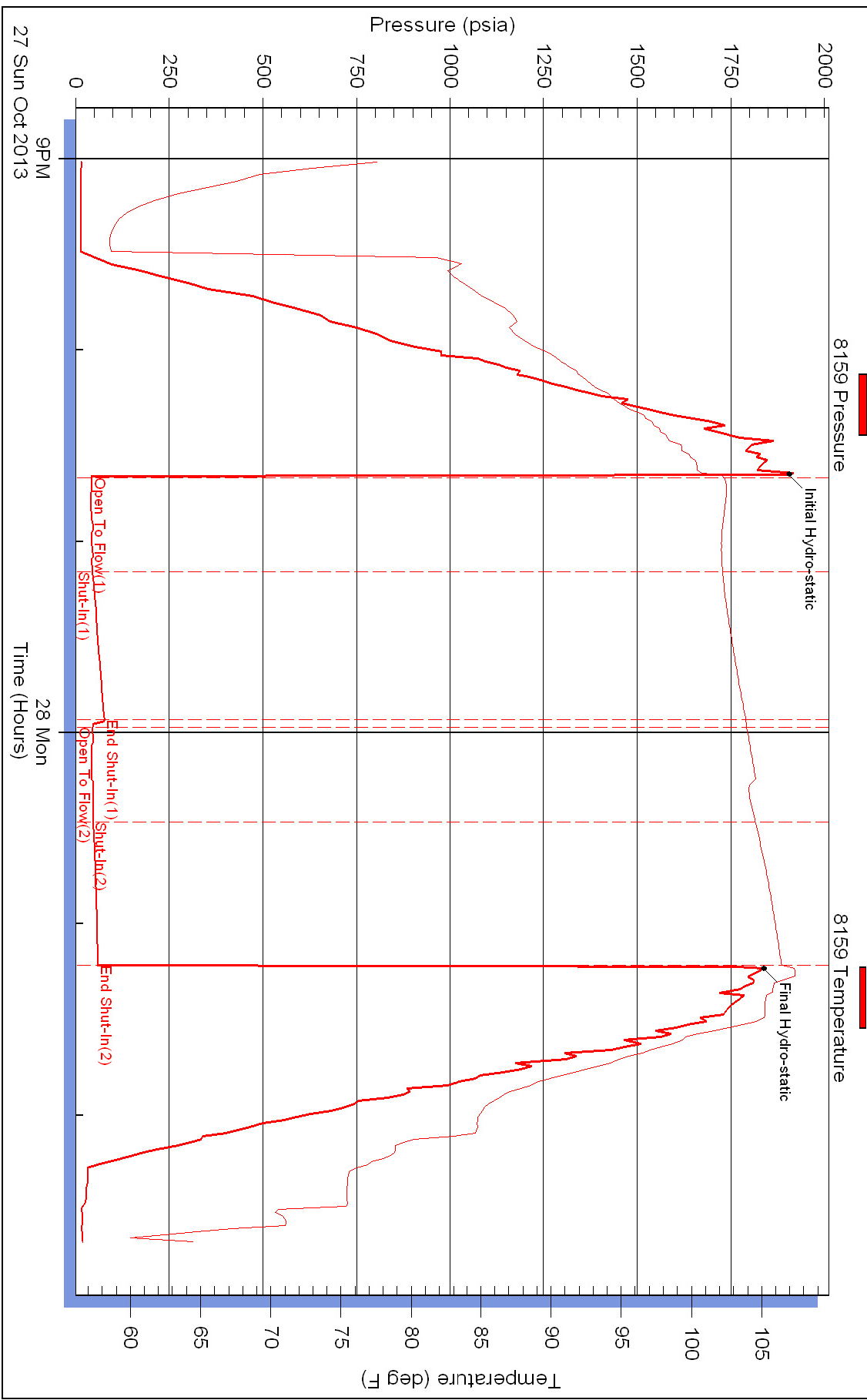
Laboratory Location:

Recovery Comments:

Pressure vs. Time



Pressure vs. Time



27 Sun Oct 2013 9PM

28 Mon Time (Hours)