

DRILL STEM TEST REPORT

Prepared For: **Castle Resources Inc**

PO Box 87
Schoenchen KS 67867

ATTN: Jerry Green

Peaslee #1

9-8s-18w Rooks,KS

Start Date: 2013.07.26 @ 08:58:00

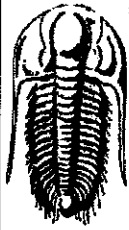
End Date: 2013.07.26 @ 16:57:30

Job Ticket #: 53937 DST #: 1

Trilobite Testing, Inc
PO Box 362 Hays, KS 67601
ph: 785-625-4778 fax: 785-625-5620

Printed: 2013.07.29 @ 09:45:09

Castle Resources Inc
9-8s-18w Rooks,KS
Peaslee #1
DST # 1
2013.07.26



**TRILOBITE
TESTING, INC.**

DRILL STEM TEST REPORT

Castle Resources Inc
PO Box 87
Schoenchen KS 67867
ATTN: Jerry Green

9-8s-18w Rooks,KS
Peaslee #1
Job Ticket: 53937 **DST#: 1**
Test Start: 2013.07.26 @ 08:58:00

GENERAL INFORMATION:

Formation:

Deviated: No Whipstock: ft (KB)

Time Tool Opened: 11:52:15

Time Test Ended: 16:57:30

Test Type: Conventional Straddle (Initial)

Tester: Cody Bloedorn

Unit No: 53

Interval: **3360.00 ft (KB) To 3402.00 ft (KB) (TVD)**

Total Depth: 3430.00 ft (KB) (TVD)

Hole Diameter: 7.88 inches Hole Condition: Fair

Reference Elevations: 1910.00 ft (KB)

1905.00 ft (CF)

KB to GR/CF: 5.00 ft

Serial #: 6799

Inside

Press@RunDepth: 87.68 psig @ 3364.00 ft (KB)

Start Date: 2013.07.26

End Date: 2013.07.26

Start Time: 08:58:05

End Time: 16:57:29

Capacity: 8000.00 psig

Last Calib.: 2013.07.26

Time On Btm: 2013.07.26 @ 11:51:45

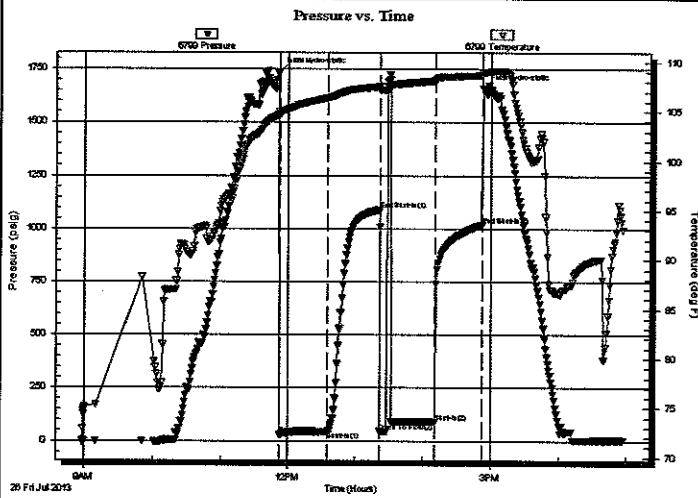
Time Off Btm: 2013.07.26 @ 14:52:45

TEST COMMENT: 45 - IF- 5" in 23 minutes, died back to 4"

45 - IS- No return

45 - FF- No blow for 5 min. Flushed tool, 7" blow and dying to 6"

45 - FS- No return



PRESSURE SUMMARY

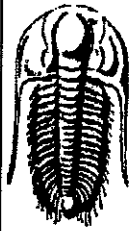
Time (Min.)	Pressure (psig)	Temp (deg F)	Annotation
0	1734.88	104.98	Initial Hydro-static
1	29.11	104.69	Open To Flow (1)
44	43.93	106.36	Shut-In(1)
90	1088.94	107.50	End Shut-In(1)
91	44.96	107.18	Open To Flow (2)
139	87.68	108.08	Shut-In(2)
181	1017.46	108.67	End Shut-In(2)
181	1661.17	108.91	Final Hydro-static

Recovery

Length (ft)	Description	Volume (bbl)
150.00	Mud, with oil spots	2.10

Gas Rates

	Choke (inches)	Pressure (psig)	Gas Rate (Mcf/d)



**TRILOBITE
TESTING, INC**

DRILL STEM TEST REPORT

TOOL DIAGRAM

Castle Resources Inc
PO Box 87
Schoenchen KS 67867
ATTN: Jerry Green

9-8s-18w Rooks,KS
Peaslee #1
Job Ticket: 53937 DST#: 1
Test Start: 2013.07.26 @ 08:58:00

Tool Information

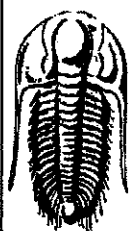
Drill Pipe:	Length: 3364.00 ft	Diameter: 3.80 inches	Volume: 47.19 bbl	Tool Weight: 2000.00 lb
Heavy Wt. Pipe:	Length: 0.00 ft	Diameter: 0.00 inches	Volume: 0.00 bbl	Weight set on Packer: 30000.00 lb
Drill Collar:	Length: 0.00 ft	Diameter: 0.00 inches	Volume: 0.00 bbl	Weight to Pull Loose: 60000.00 lb
			<u>Total Volume: 47.19 bbl</u>	Tool Chased 0.00 ft
Drill Pipe Above KB:	25.00 ft			String Weight: Initial 42000.00 lb
Depth to Top Packer:	3360.00 ft			Final 44000.00 lb
Depth to Bottom Packer:	3402.00 ft			
Interval between Packers:	42.00 ft			
Tool Length:	94.00 ft			
Number of Packers:	3	Diameter: 6.75 inches		

Tool Comments:

Tool Description

Tool Description	Length (ft)	Serial No.	Position	Depth (ft)	Accum. Lengths
Change Over Sub	1.00			3340.00	
Shut In Tool	5.00			3345.00	
Hydraulic tool	5.00			3350.00	
Packer	5.00			3355.00	21.00 Bottom Of Top Packer
Packer	5.00			3360.00	
Stubb	1.00			3361.00	
Perforations	2.00			3363.00	
Change Over Sub	1.00			3364.00	
Recorder	0.00	6799	Inside	3364.00	
Recorder	0.00	8648	Outside	3364.00	
Drill Pipe	31.00			3395.00	
Change Over Sub	1.00			3396.00	
Perforations	5.00			3401.00	
Blank Off Sub	1.00			3402.00	42.00 Tool Interval
Packer	4.00			3406.00	
Stubb	1.00			3407.00	
Recorder	0.00	8655	Below	3407.00	
Perforations	23.00			3430.00	
Bullnose	3.00			3433.00	31.00 Bottom Packers & Anchor

Total Tool Length: 94.00



**TRILOBITE
TESTING, INC**

DRILL STEM TEST REPORT

FLUID SUMMARY

Castle Resources Inc

9-8s-18w Rooks,KS

PO Box 87
Schoenchen KS 67867

Peaslee #1

Job Ticket: 53937

DST#: 1

ATTN: Jerry Green

Test Start: 2013.07.26 @ 08:58:00

Mud and Cushion Information

Mud Type: Gel Chem	Cushion Type:	Oil API:	deg API
Mud Weight: 10.00 lb/gal	Cushion Length: ft	Water Salinity:	ppm
Viscosity: 42.00 sec/qt	Cushion Volume: bbl		
Water Loss: 9.99 in ³	Gas Cushion Type:		
Resistivity: ohm.m	Gas Cushion Pressure: psig		
Salinity: 4000.00 ppm			
Filter Cake: inches			

Recovery Information

Recovery Table

Length ft	Description	Volume bbl
150.00	Mud, with oil spots	2.104

Total Length: 150.00 ft Total Volume: 2.104 bbl

Num Fluid Samples: 0

Num Gas Bombs: 0

Serial #:

Laboratory Name:

Laboratory Location:

Recovery Comments:

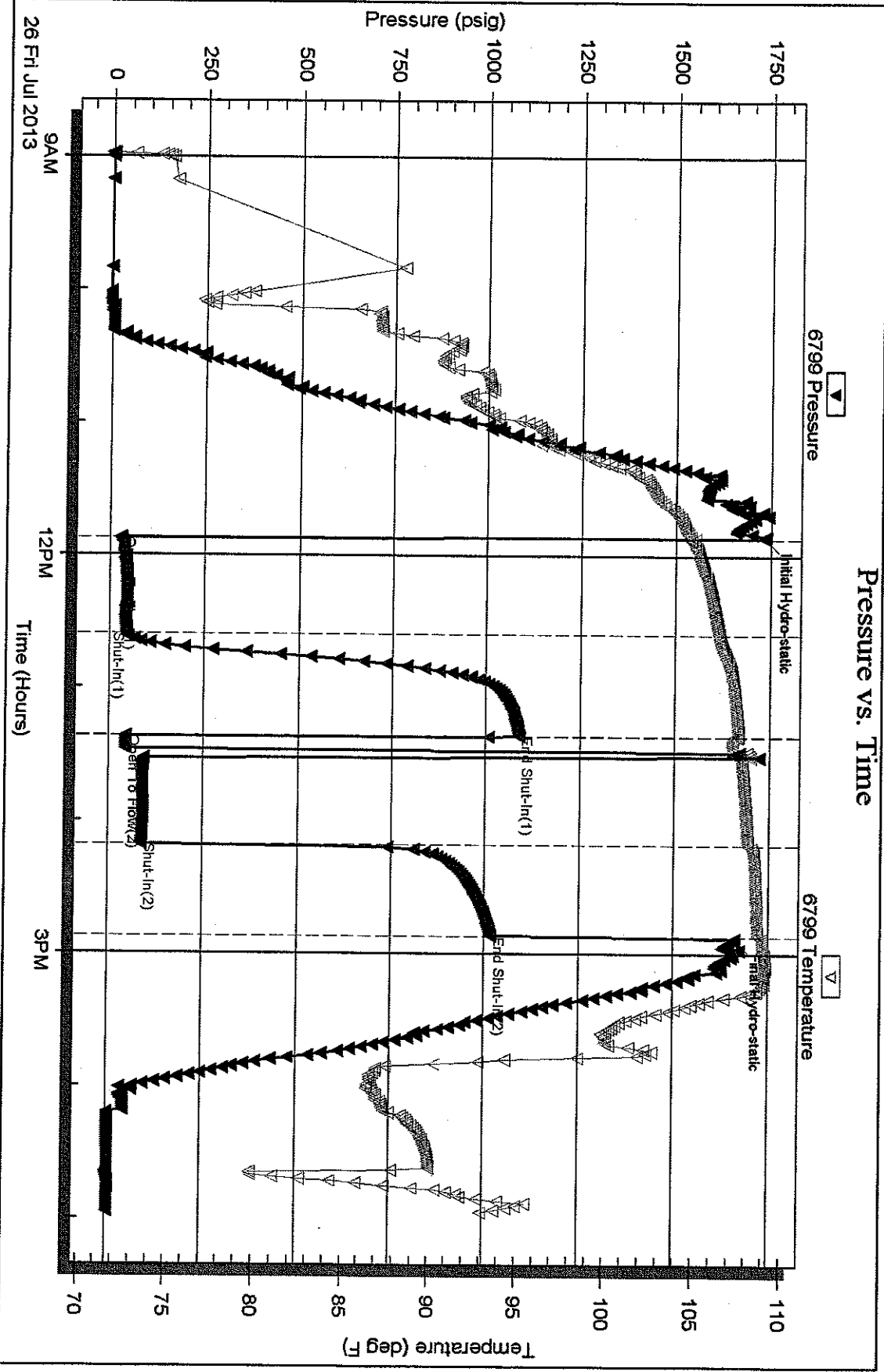
Serial #: 6799

Inside

Castle Resources Inc

Peaslee #1

DST Test Number: 1

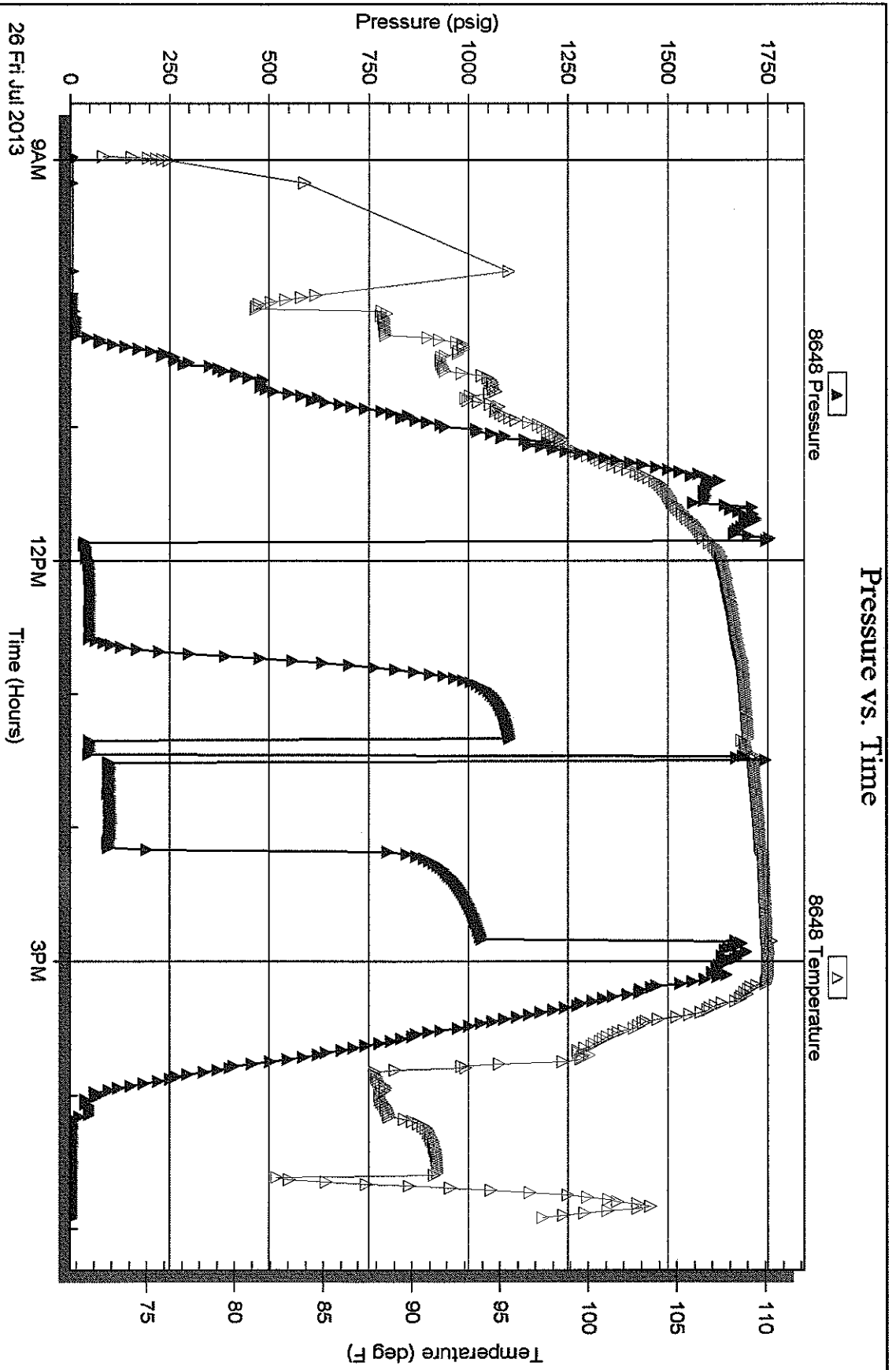


Serial #: 8648

Outside Castle Resources Inc

Peaslee #1

DST Test Number: 1

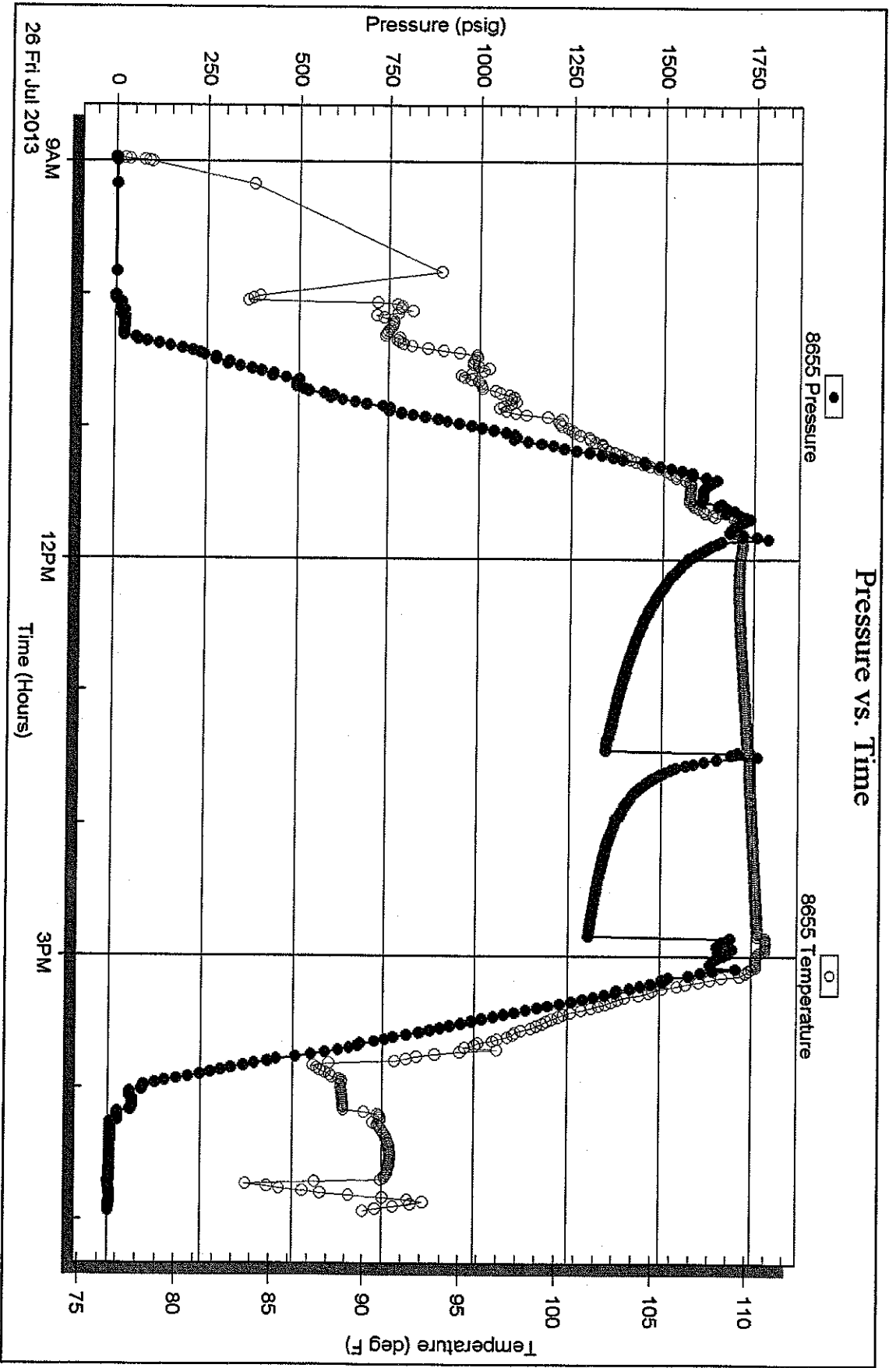


Serial #: 8655

Below (Straddle) Resources Inc

Peaslee #1

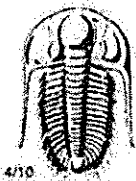
DST Test Number: 1



Trilobite Testing, Inc

Ref. No: 53937

Printed: 2013.07.29 @ 09:45:13



TRILOBITE TESTING INC.

1515 Commerce Parkway • Hays, Kansas 67601

Test Ticket

NO. 53937

Well Name & No.	Peaslee #1	Test No.	1	Date	7-26-13
Company	Castle Resources INC	Elevation	1905	KB	1910
Address	Po Box 87, Schoenchen KS, 67867				
Co. Rep / Geo.	Jerry Green	Rig	White Knight		
Location: Sec.	9	Twp.	8s	Rge.	18w
		Co.	Rooks	State	KS

Interval Tested	3360 - 3402	Zone Tested	
Anchor Length	42' TD=3430	Drill Pipe Run	3364'
Top Packer Depth	3355	Drill Collars Run	—
Bottom Packer Depth	3360	Wt. Pipe Run	—
Total Depth	3402	Chlorides	4,000 ppm System
		LCM	—

Blow Description IF - 5" in 23 minutes. died back to 4"
 IST - No return
 FF - No blow for 5 min. Flushed tool, 7" blow died back to 6"
 PSI - No return

Rec	Feet of	%gas	%oil	%water	%mud
150	Mud with oil spots			100	

Rec Total 150' BHT 108° Gravity — API RW — @ — F Chlorides — ppm

(A) Initial Hydrostatic	1734	<input checked="" type="checkbox"/> Test	150	T-On Location	7:55am
(B) First Initial Flow	29	<input type="checkbox"/> Jars		T-Started	8:58am
(C) First Final Flow	43	<input type="checkbox"/> Safety Joint		T-Open	11:53am
(D) Initial Shut-In	1088	<input type="checkbox"/> Circ Sub		T-Pulled	2:53pm
(E) Second Initial Flow	44	<input type="checkbox"/> Hourly Standby		T-Out	4:58pm
(F) Second Final Flow	87	<input type="checkbox"/> Mileage	79 RT x 2 122.45	Comments	Mileage x2 for bringing shale packer out by Daniel. 122.45
(G) Final Shut-In	1017	<input type="checkbox"/> Sampler		<input type="checkbox"/> Ruined Shale Packer	
(H) Final Hydrostatic	1661	<input checked="" type="checkbox"/> Straddle	600	<input type="checkbox"/> Ruined Packer	

Initial Open	45	<input checked="" type="checkbox"/> Shale Packer	250	<input type="checkbox"/> Extra Copies	
Initial Shut-In	45	<input type="checkbox"/> Extra Packer		Sub Total	0
Final Flow	45	<input type="checkbox"/> Extra Recorder		Total	2244.90
Final Shut-In	45	<input type="checkbox"/> Day Standby		MP/DST Disc't	
		<input type="checkbox"/> Accessibility		Sub Total	2122.45

Approved By _____ Our Representative Cody Ble

Trilobite Testing Inc. shall not be liable for damaged of any kind of the property or personnel of the one for whom a test is made, or for any loss suffered or sustained, directly or indirectly, through the use of its equipment, or its statements or opinion concerning the results of any test, tools lost or damaged in the hole shall be paid for at cost by the party for whom the test is made.