



DRILL STEM TEST REPORT

Prepared For: **Prospect Oil & Gas Corp**

PO Box 837
Russell, KS 67665

ATTN: Brad Hutchison

Steinle #3

31-13s-12w Russell,KS

Start Date: 2013.06.11 @ 19:53:24

End Date: 2013.06.12 @ 02:48:24

Job Ticket #: 53866 DST #: 1

Trilobite Testing, Inc

PO Box 362 Hays, KS 67601

ph: 785-625-4778 fax: 785-625-5620

Printed: 2013.06.14 @ 09:37:07



TRILOBITE TESTING, INC.

DRILL STEM TEST REPORT

Prospect Oil & Gas Corp
 PO Box 837
 Russell, KS 67665
 ATTN: Brad Hutchison

31-13s-12w Russell, KS

Steinle #3

Job Ticket: 53866

DST#: 1

Test Start: 2013.06.11 @ 19:53:24

GENERAL INFORMATION:

Formation: **Lansing A**

Deviated: No Whipstock: ft (KB)

Time Tool Opened: 21:44:54

Time Test Ended: 02:48:24

Test Type: Conventional Bottom Hole (Initial)

Tester: Jeff Brown

Unit No: 67

Interval: **3005.00 ft (KB) To 3045.00 ft (KB) (TVD)**

Reference Elevations: 1845.00 ft (KB)

Total Depth: 3045.00 ft (KB) (TVD)

1840.00 ft (CF)

Hole Diameter: 7.88 inches Hole Condition: Good

KB to GR/CF: 5.00 ft

Serial #: 6625 Outside

Press @ Run Depth: 194.93 psig @ 3040.00 ft (KB)

Capacity: 8000.00 psig

Start Date: 2013.06.11

End Date:

2013.06.12

Last Calib.:

2013.06.12

Start Time: 19:53:25

End Time:

02:44:24

Time On Btm:

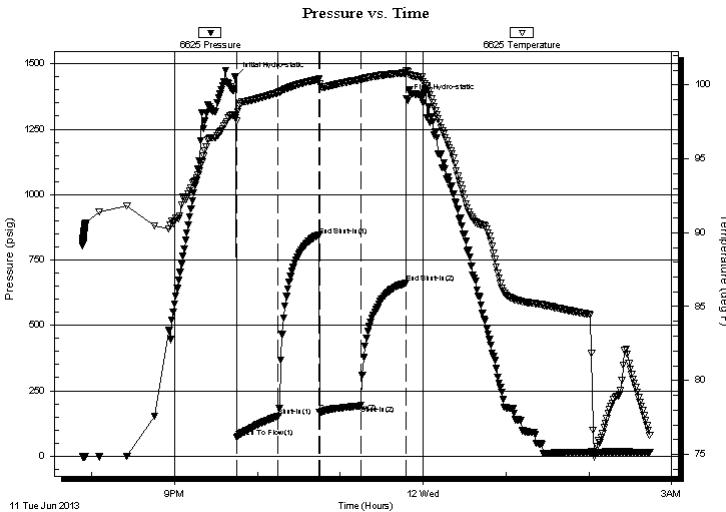
2013.06.11 @ 21:44:24

Time Off Btm:

2013.06.11 @ 23:47:54

TEST COMMENT: IFP=Strong blow BOB in 4 1/2 min
 ISI=Dead no blow back
 FFP=Fair blow built to 8 3/4"
 FSI=Weak surface blow back

PRESSURE SUMMARY



Time (Min.)	Pressure (psig)	Temp (deg F)	Annotation
0	1451.45	97.81	Initial Hydro-static
1	71.87	97.56	Open To Flow (1)
31	153.30	99.48	Shut-In(1)
60	843.23	100.39	End Shut-In(1)
61	168.93	100.05	Open To Flow (2)
91	194.93	100.37	Shut-In(2)
123	662.34	100.82	End Shut-In(2)
124	1367.22	100.98	Final Hydro-static

Recovery

Length (ft)	Description	Volume (bbl)
126.00	SOCGMW 5%G 5%O 20%M 70%W	0.89
250.00	SOCGWM 10%G 5%O 35%W 50%M	1.73
31.00	OCVM 10%O 10%W 80%M	0.43
0.00	63-GIP	0.00

Gas Rates

Choke (inches)	Pressure (psig)	Gas Rate (Mcf/d)



**TRILOBITE
TESTING, INC.**

DRILL STEM TEST REPORT

TOOL DIAGRAM

Prospect Oil & Gas Corp

31-13s-12w Russell,KS

PO Box 837
Russell, KS 67665

Steinle #3

Job Ticket: 53866

DST#: 1

ATTN: Brad Hutchison

Test Start: 2013.06.11 @ 19:53:24

Tool Information

Drill Pipe:	Length: 2616.00 ft	Diameter: 3.80 inches	Volume: 36.70 bbl	Tool Weight: 2000.00 lb
Heavy Wt. Pipe:	Length: 343.00 ft	Diameter: 2.70 inches	Volume: 2.43 bbl	Weight set on Packer: 20000.00 lb
Drill Collar:	Length: 30.00 ft	Diameter: 2.25 inches	Volume: 0.15 bbl	Weight to Pull Loose: 42000.00 lb
			<u>Total Volume: 39.28 bbl</u>	Tool Chased 0.00 ft
Drill Pipe Above KB:	4.00 ft			String Weight: Initial 34000.00 lb
Depth to Top Packer:	3005.00 ft			Final 36000.00 lb
Depth to Bottom Packer:	ft			
Interval between Packers:	40.00 ft			
Tool Length:	60.00 ft			
Number of Packers:	2	Diameter: 6.75 inches		

Tool Comments:

Tool Description

Tool Description	Length (ft)	Serial No.	Position	Depth (ft)	Accum. Lengths
Change Over Sub	1.00			2986.00	
Shut In Tool	5.00			2991.00	
Hydraulic tool	5.00			2996.00	
Packer	4.00			3000.00	20.00 Bottom Of Top Packer
Packer	5.00			3005.00	
Stubb	1.00			3006.00	
Perforations	2.00			3008.00	
Change Over Sub	1.00			3009.00	
Drill Pipe	30.00			3039.00	
Change Over Sub	1.00			3040.00	
Recorder	0.00	6625	Outside	3040.00	
Recorder	0.00	8679	Inside	3040.00	
Perforations	2.00			3042.00	
Bullnose	3.00			3045.00	40.00 Bottom Packers & Anchor

Total Tool Length: 60.00



**TRILOBITE
TESTING, INC.**

DRILL STEM TEST REPORT

FLUID SUMMARY

Prospect Oil & Gas Corp

31-13s-12w Russell,KS

PO Box 837
Russell, KS 67665

Steinle #3

Job Ticket: 53866

DST#: 1

ATTN: Brad Hutchison

Test Start: 2013.06.11 @ 19:53:24

Mud and Cushion Information

Mud Type: Gel Chem

Cushion Type:

Oil API:

deg API

Mud Weight: 9.00 lb/gal

Cushion Length:

ft

Water Salinity:

30000 ppm

Viscosity: 45.00 sec/qt

Cushion Volume:

bbbl

Water Loss: 7.19 in³

Gas Cushion Type:

Resistivity: ohm.m

Gas Cushion Pressure:

psig

Salinity: 8000.00 ppm

Filter Cake: inches

Recovery Information

Recovery Table

Length ft	Description	Volume bbbl
126.00	SOCGMW 5%G 5%O 20%M 70%W	0.892
250.00	SOCGMW 10%G 5%O 35%W 50%M	1.726
31.00	OCWM 10%O 10%W 80%M	0.435
0.00	63-GIP	0.000

Total Length: 407.00 ft

Total Volume: 3.053 bbl

Num Fluid Samples: 0

Num Gas Bombs: 0

Serial #:

Laboratory Name:

Laboratory Location:

Recovery Comments: Rw .219 @ 76.6

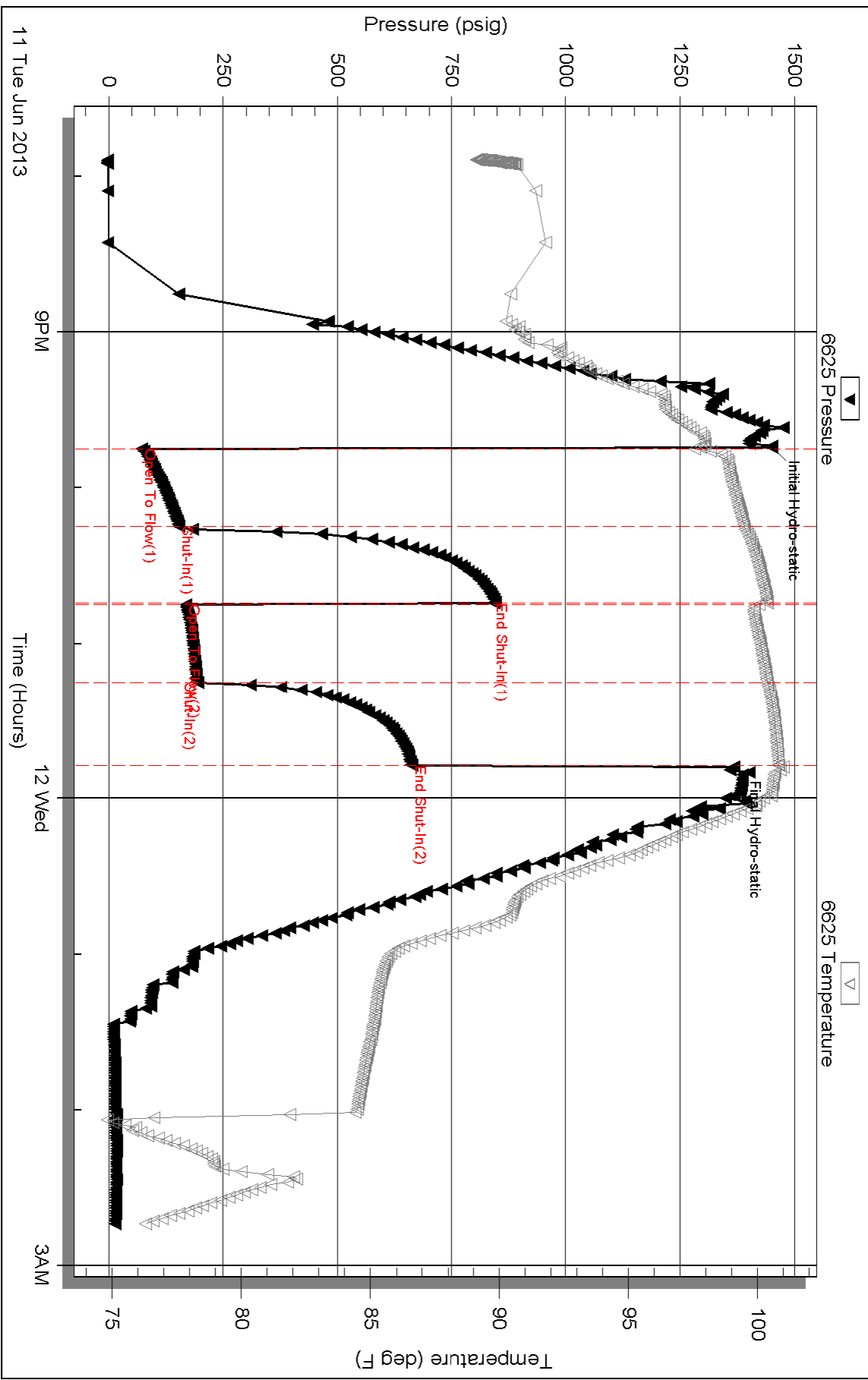
Serial #: 6625

Outside Prospect Oil & Gas Corp

Steinle #3

DST Test Number: 1

Pressure vs. Time



Triobite Testing, Inc

Ref. No: 53866

Printed: 2013.06.14 @ 09:37:09

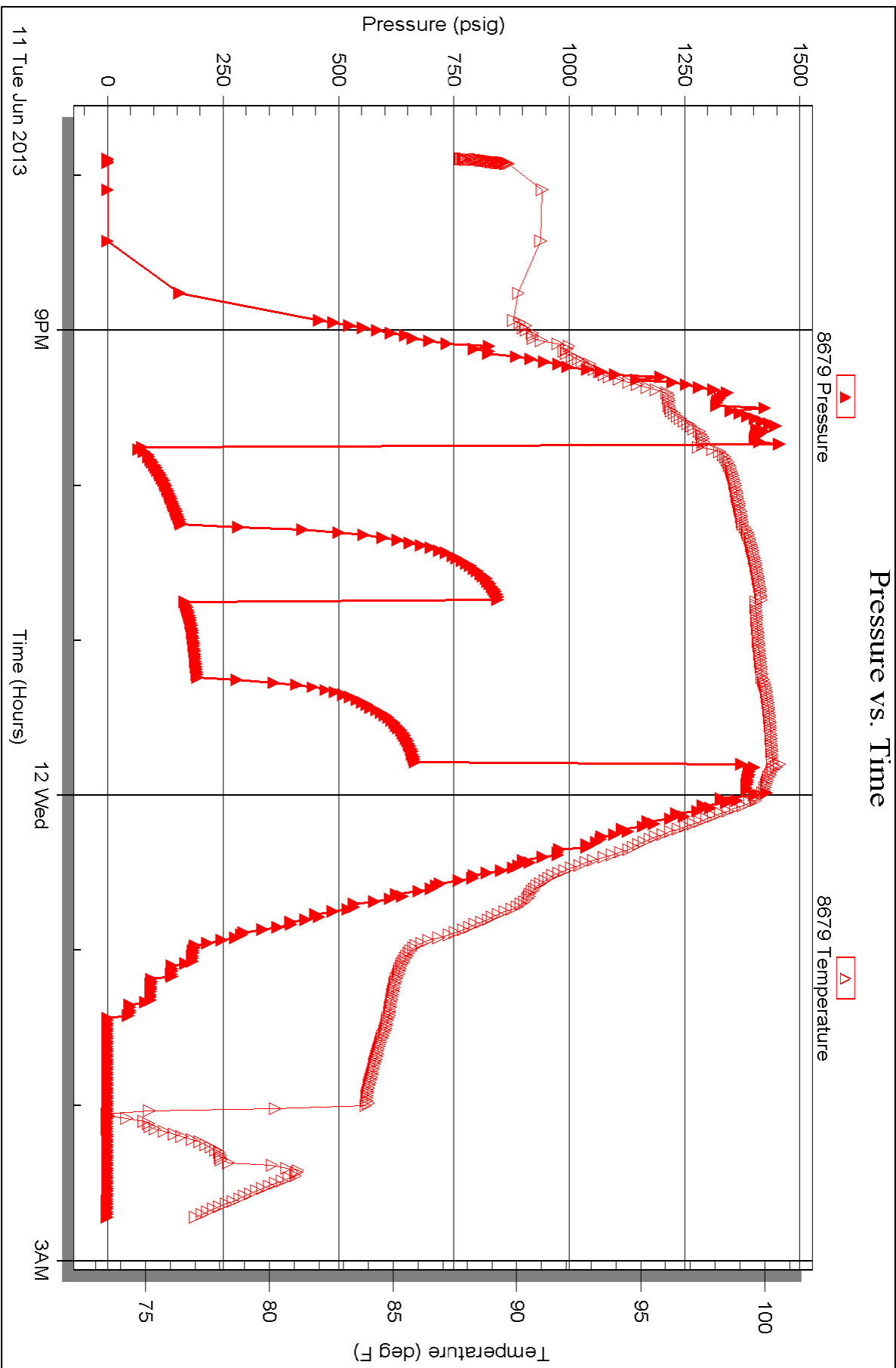
Serial #: 8679

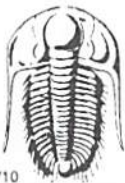
Inside

Prospect Oil & Gas Corp

Steinle #3

DST Test Number: 1





TRILOBITE TESTING INC.

1515 Commerce Parkway • Hays, Kansas 67601

Test Ticket

NO. 53866

Well Name & No. Steink #3 Test No. 1 Date 4-11-13
 Company Prospect Oil & Gas Corp Elevation 1845 KB 1840 GL
 Address PO Box 837 Russell KS 67665
 Co. Rep / Geo. Brad Hutchison Rig Shields
 Location: Sec. 31 Twp. 13 S Rge. 12 W Co. Russell State Ks

Interval Tested 3005-3045 Zone Tested LANSING - A -
 Anchor Length 40 Drill Pipe Run 2616 Mud Wt. 9.0
 Top Packer Depth 3000 Drill Collars Run 31 Vis 45
 Bottom Packer Depth 3005 Wt. Pipe Run 343 WL 7.2
 Total Depth 3045 Chlorides 8000 ppm System LCM NA
 Blow Description fl. Strong Blow BOB IN 4 1/2 min
fl. Dead No Blow Back
fl. Fair Blow Built TO 8 3/4 IN
fl. Weak Surface Blow Back

Rec	Feet of	%gas	%oil	%water	%mud
126	SOC G MW	5	5	70	20
250	SOC G MW	10	5	35	50
31	α WM		10	10	80
	63-GIP				

Rec Total 407 BHT 101 Gravity _____ API RW 219 @ 76.6 °F Chlorides 30,000 ppm
 (A) Initial Hydrostatic 1451 Test 1150 T-On Location 19:30
 (B) First Initial Flow 72 Jars T-Started 19:53
 (C) First Final Flow 153 Safety Joint T-Open 21:45
 (D) Initial Shut-In 843 Circ Sub T-Pulled 23:45
 (E) Second Initial Flow 169 Hourly Standby T-Out 2:48
 (F) Second Final Flow 195 Mileage 70 RT ²¹⁷ Comments locked Tool's @ 17:59
 (G) Final Shut-In 662 Sampler on 6-12-13
 (H) Final Hydrostatic 1367 Straddle Ruined Shale Packer
 Shale Packer Ruined Packer
 Extra Packer Extra Copies
 Extra Recorder Sub Total 0
 Day Standby Total 1367
 Accessibility MP/DST Disc't _____
 Sub Total 1367

Approved By _____ Our Representative Jeff Brown

Trilobite Testing Inc. shall not be liable for damaged of any kind of the property or personnel of the one for whom a test is made, or for any loss suffered or sustained, directly or indirectly, through the use of its equipment, or its statements or opinion concerning the results of any test, tools lost or damaged in the hole shall be paid for at cost by the party for whom the test is made.