



**TRILOBITE
TESTING, INC.**

DRILL STEM TEST REPORT

Samuel Gary Jr & Associates

25-14s-18w

1515 w ynkoop Ste 700
Denver Co 80202

Lawrence 1-25

Job Ticket: 041061

DST#: 2

ATTN: Chris Mitchell

Test Start: 2013.07.17 @ 17:59:25

GENERAL INFORMATION:

Formation: **Lansing-I-J-K**

Deviated: No Whipstock: ft (KB)

Time Tool Opened: 19:51:25

Time Test Ended: 01:48:55

Test Type: Conventional Bottom Hole (Reset)

Tester: Jeff Brown

Unit No: 67

Interval: 3406.00 ft (KB) To 3476.00 ft (KB) (TVD)

Reference Elevations: 1976.00 ft (KB)

Total Depth: 3476.00 ft (KB) (TVD)

1966.00 ft (CF)

Hole Diameter: 7.88 inches Hole Condition: Good

KB to GR/CF: 10.00 ft

Serial #: 6625 Inside

Press @ Run Depth: 37.36 psig @ 3444.00 ft (KB)

Capacity: 8000.00 psig

Start Date: 2013.07.17

End Date:

2013.07.18

Last Calib.:

2013.07.18

Start Time:

17:59:26

End Time:

01:44:55

Time On Btm:

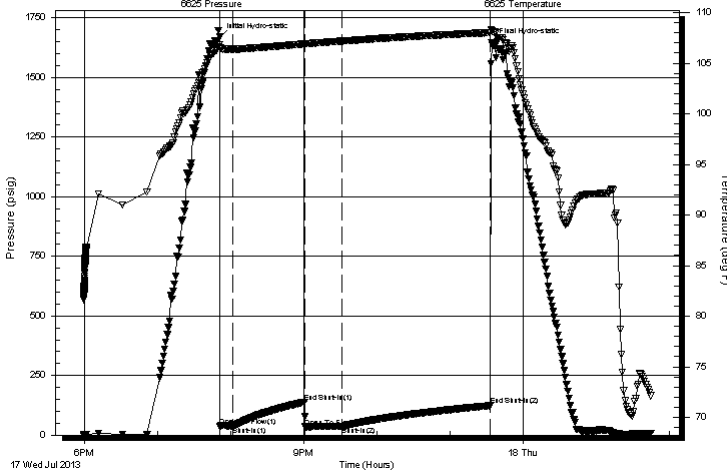
2013.07.17 @ 19:50:55

Time Off Btm:

2013.07.17 @ 23:34:25

TEST COMMENT: IFP=10-min=Weak blow built to 2-1/2 in
ISI=60-min=Dead no blow back
FFP=30-min=Fair blow built to 4 in
FSI=120-min=Dead no blow back

PRESSURE SUMMARY



Time (Min.)	Pressure (psig)	Temp (deg F)	Annotation
0	1669.44	106.81	Initial Hydro-static
1	37.14	106.52	Open To Flow (1)
11	37.62	106.39	Shut-In(1)
70	138.52	106.90	End Shut-In(1)
71	34.33	106.91	Open To Flow (2)
101	37.36	107.18	Shut-In(2)
222	123.44	108.02	End Shut-In(2)
224	1647.63	108.17	Final Hydro-static

Recovery

Length (ft)	Description	Volume (bbl)
15.00	OCM 10%O 90%M	0.21

Gas Rates

	Choke (inches)	Pressure (psig)	Gas Rate (Mcf/d)

* Recovery from multiple tests



**TRILOBITE
TESTING, INC.**

DRILL STEM TEST REPORT

FLUID SUMMARY

Samuel Gary Jr & Associates

25-14s-18w

1515 Wynkoop Ste 700
Denver Co 80202

Lawrence 1-25

Job Ticket: 041061

DST#: 2

ATTN: Chris Mitchell

Test Start: 2013.07.17 @ 17:59:25

Mud and Cushion Information

Mud Type: Gel Chem

Cushion Type:

Oil API:

deg API

Mud Weight: 9.00 lb/gal

Cushion Length:

ft

Water Salinity:

ppm

Viscosity: 58.00 sec/qt

Cushion Volume:

bbbl

Water Loss: 7.40 in³

Gas Cushion Type:

Resistivity: ohm.m

Gas Cushion Pressure:

psig

Salinity: 2200.00 ppm

Filter Cake: inches

Recovery Information

Recovery Table

Length ft	Description	Volume bbl
15.00	OCM 10%O 90%M	0.210

Total Length: 15.00 ft Total Volume: 0.210 bbl

Num Fluid Samples: 0

Num Gas Bombs: 0

Serial #:

Laboratory Name:

Laboratory Location:

Recovery Comments: 2000 ML of total fluid =MCWO 5%W 40%M 55%O

100 PSI

800 ML of mud-100 ML of water-1100 ML of oil

Serial #: 6625

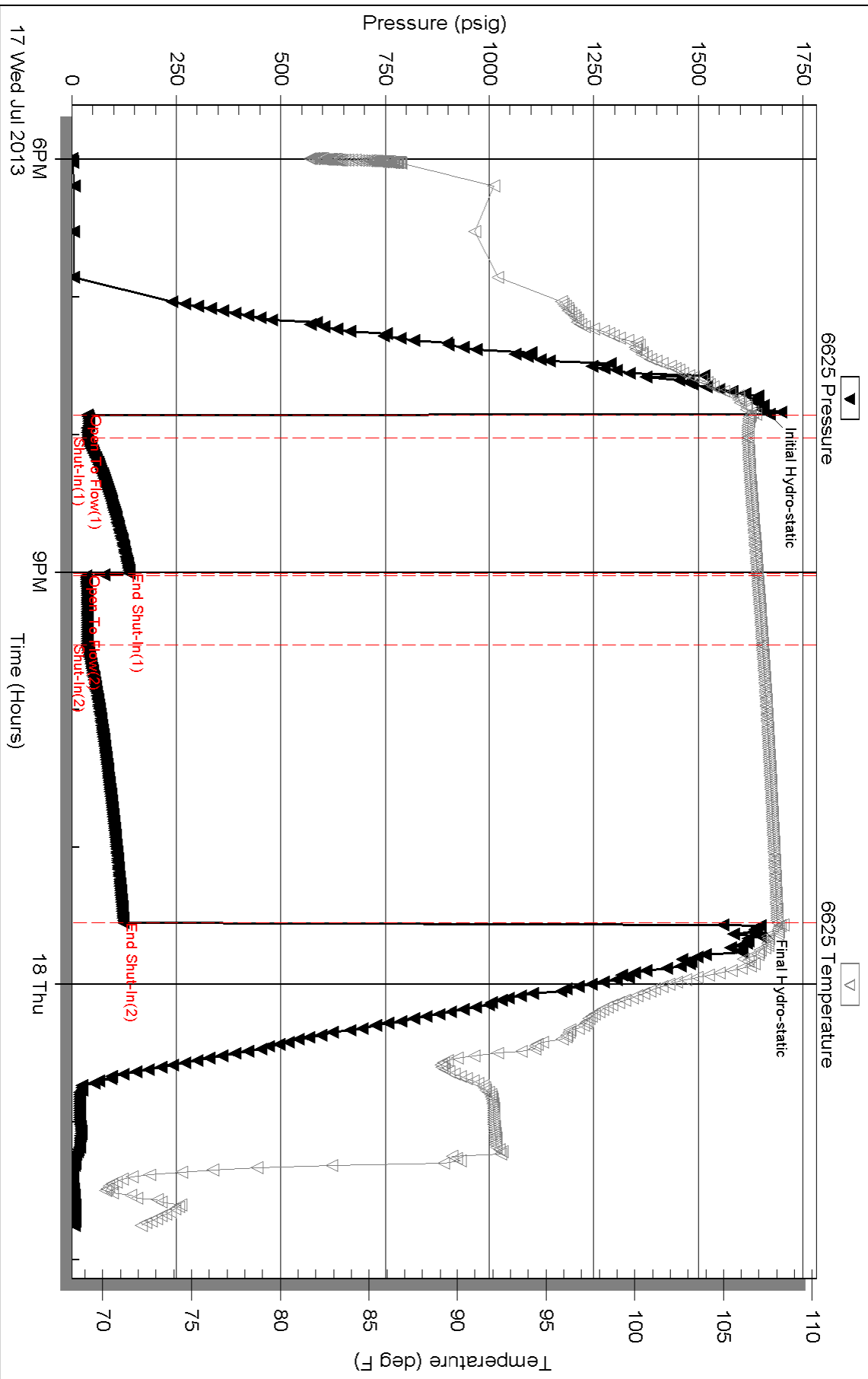
Inside

Samuel Gary Jr & Associates

Lawrence 1-25

DST Test Number: 2

Pressure vs. Time



Serial #: 8167

Fluid

Samuel Gary Jr & Associates

Lawrence 1-25

DST Test Number: 2

