



**TRILOBITE
TESTING, INC.**

DRILL STEM TEST REPORT

Samuel Gary Jr & Assoc Inc

1-13s-23w Trego

1515 Wynkoop
Ste 700
Denver Co 80202
ATTN: Clayton Camozzi

Max EtAl #1-1

Job Ticket: 54257

DST#: 2

Test Start: 2013.07.23 @ 16:10:43

GENERAL INFORMATION:

Formation: **LKC F**

Deviated: No Whipstock: ft (KB)

Time Tool Opened: 17:55:08

Time Test Ended: 00:36:37

Test Type: Conventional Bottom Hole (Reset)

Tester: Ray Schwager

Unit No: 70

Interval: 3748.00 ft (KB) To 3762.00 ft (KB) (TVD)

Reference Elevations: 2306.00 ft (KB)

Total Depth: 3744.00 ft (KB) (TVD)

2298.00 ft (CF)

Hole Diameter: 7.85 inches Hole Condition: Fair

KB to GR/CF: 8.00 ft

Serial #: 8369

Inside

Press @ Run Depth: 189.65 psig @ 3756.00 ft (KB)

Capacity: 8000.00 psig

Start Date: 2013.07.23

End Date:

2013.07.24

Last Calib.:

2013.07.24

Start Time: 16:10:43

End Time:

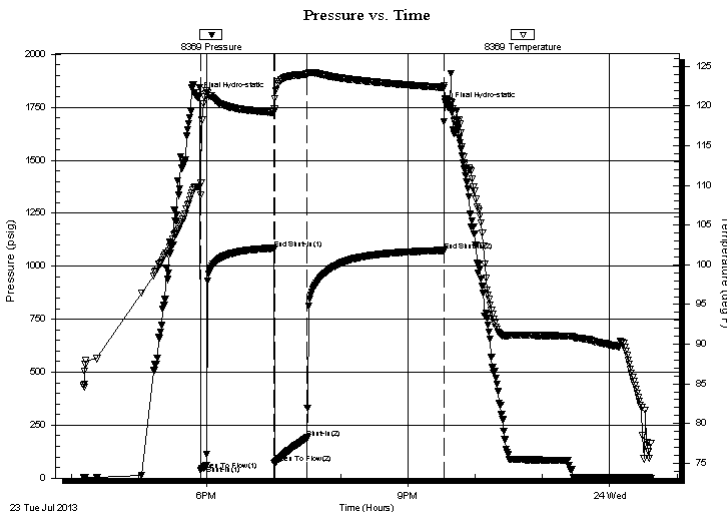
00:36:37

Time On Btm:

Time Off Btm: 2013.07.23 @ 17:51:53

TEST COMMENT: 5-IFP-w k to a gd bl 1/2" to 8 1/2" bl
60-ISIP-no bl
30-FFP-w k to strg in 9 min
120-FSIP-1 1/2" bl bk

PRESSURE SUMMARY



Time (Min.)	Pressure (psig)	Temp (deg F)	Annotation
0	1799.40	109.80	Final Hydro-static
4	36.82	108.75	Open To Flow (1)
9	61.98	121.87	Shut-In(1)
69	1079.93	119.21	End Shut-In(1)
69	69.71	119.63	Open To Flow (2)
99	189.65	124.03	Shut-In(2)
221	1075.15	122.35	End Shut-In(2)
224	1752.93	120.68	Final Hydro-static

Recovery

Length (ft)	Description	Volume (bbl)
185.00	Water	2.32
105.00	O&GCMW 10%G10%O30%M50%W	1.47
60.00	CO	0.84
0.00	325'GIP	0.00

Gas Rates

	Choke (inches)	Pressure (psig)	Gas Rate (Mcf/d)

* Recovery from multiple tests



**TRILOBITE
TESTING, INC.**

DRILL STEM TEST REPORT

FLUID SUMMARY

Samuel Gary Jr & Assoc Inc

1-13s-23w Trego

1515 Wynkoop
Ste 700
Denver Co 80202

Max EtAl #1-1

Job Ticket: 54257

DST#: 2

ATTN: Clayton Camozzi

Test Start: 2013.07.23 @ 16:10:43

Mud and Cushion Information

Mud Type: Gel Chem
Mud Weight: 9.00 lb/gal
Viscosity: 59.00 sec/qt
Water Loss: 8.72 in³
Resistivity: ohm.m
Salinity: 1500.00 ppm
Filter Cake: 1.00 inches

Cushion Type:
Cushion Length: ft
Cushion Volume: bbl
Gas Cushion Type:
Gas Cushion Pressure: psig

Oil API: 28 deg API
Water Salinity: 86000 ppm

Recovery Information

Recovery Table

Length ft	Description	Volume bbl
185.00	Water	2.322
105.00	O&GCMW 10%G10%O30%M50%W	1.473
60.00	CO	0.842
0.00	325'GIP	0.000

Total Length: 350.00 ft Total Volume: 4.637 bbl

Num Fluid Samples: 0 Num Gas Bombs: 0 Serial #:

Laboratory Name: Laboratory Location:

Recovery Comments: Sampler Data : PSI 575# 150MLgas 1800MLOil 1050ML w ater
RW .09 @ 70F

Serial #: 8369

Inside

Samuel Gary Jr & Assoc Inc

Max EAI #1-1

DST Test Number: 2

