

DRILL STEM TEST REPORT

Prepared For: **F.G Holl Company LLC.**

9431 East Central Ste 100
Wichita Ks. 67206

ATTN: Ryan Greenbaum

Hanson A Unit 1-15

15-20s-16w Pawnee

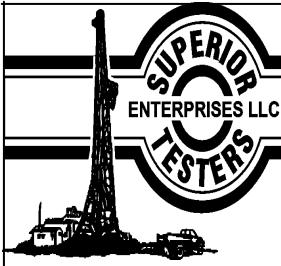
Start Date: 2013.10.24 @ 08:59:00

End Date: 2013.10.24 @ 15:06:00

Job Ticket #: 18575 DST #: 4

Superior Testers Enterprises LLC
PO Box 138 Great Bend KS 67530
1-800-792-6902

Printed: 2013.10.25 @ 01:19:22



DRILL STEM TEST REPORT

F.G Holl Company LLC.

15-20s-16w Pawnee

9431 East Central Ste 100
Wichita Ks. 67206

Hanson A Unit 1-15

Job Ticket: 18575

DST#: 4

ATTN: Ryan Greenbaum

Test Start: 2013.10.24 @ 08:59:00

GENERAL INFORMATION:

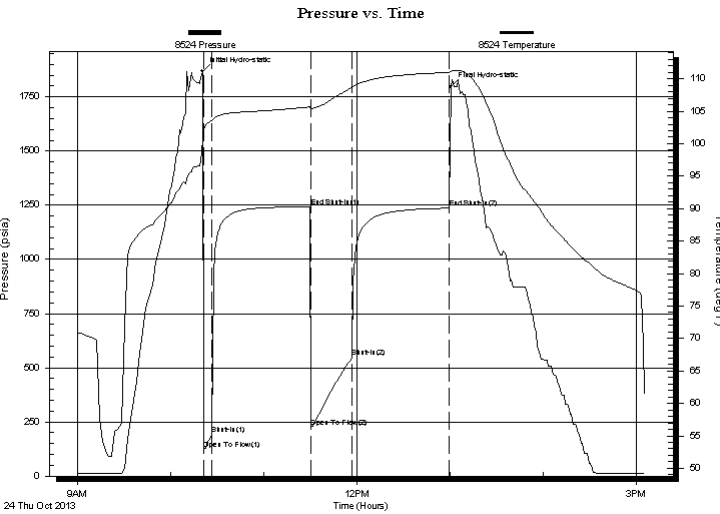
Formation: **Arbuckle**
 Deviated: No Whipstock: ft (KB)
 Test Type: Conventional Bottom Hole (Initial)
 Time Tool Opened: 10:21:30
 Tester: Dustin Ellis
 Time Test Ended: 15:06:00
 Unit No: 3315-Great Bend-35
 Interval: **3765.00 ft (KB) To 3780.00 ft (KB) (TVD)**
 Reference Elevations: 2033.00 ft (KB)
 Total Depth: 3780.00 ft (KB) (TVD)
 2025.00 ft (CF)
 Hole Diameter: 7.88 inches
 Hole Condition: Fair
 KB to GR/CF: 8.00 ft

Serial #: 8524

Outside

Press @ Run Depth: 548.04 psia @ 3776.00 ft (KB) Capacity: 5000.00 psia
 Start Date: 2013.10.24 End Date: 2013.10.24 Last Calib.: 2013.10.25
 Start Time: 08:59:00 End Time: 15:06:00 Time On Btm: 2013.10.24 @ 10:20:30
 Time Off Btm: 2013.10.24 @ 13:00:30

TEST COMMENT: 1st Open 15 minutes Strong building blow built to bottom bucket in 4 minutes.
 1st Shut in 60 minutes No blow back
 2nd Open 30 minutes Strong building blow built to bottom bucket in 4 minutes.
 2nd Shut in 60 minutes No blow back



PRESSURE SUMMARY

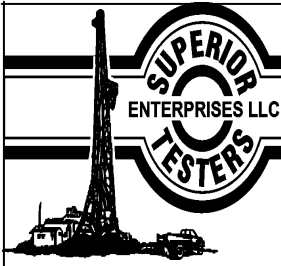
Time (Min.)	Pressure (psia)	Temp (deg F)	Annotation
0	1868.29	100.65	Initial Hydro-static
1	122.64	102.31	Open To Flow (1)
6	191.41	103.61	Shut-In(1)
70	1242.20	105.68	End Shut-In(1)
70	226.40	105.46	Open To Flow (2)
97	548.04	108.64	Shut-In(2)
159	1236.01	111.00	End Shut-In(2)
160	1796.95	111.16	Final Hydro-static

Recovery

Length (ft)	Description	Volume (bbl)
1037.00	Water 100%	14.55
0.00	Chlorides 42,000.3ohms @58degrees	0.00

Gas Rates

	Choke (inches)	Pressure (psia)	Gas Rate (Mcf/d)



DRILL STEM TEST REPORT

TOOL DIAGRAM

F.G Holl Company LLC.

15-20s-16w Pawnee

9431 East Central Ste 100
Wichita Ks. 67206

Hanson A Unit 1-15

Job Ticket: 18575

DST#: 4

ATTN: Ryan Greenbaum

Test Start: 2013.10.24 @ 08:59:00

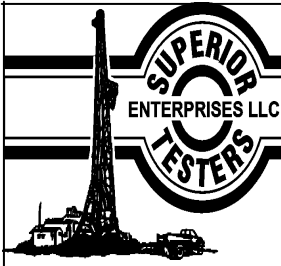
Tool Information

Drill Pipe:	Length: 3755.00 ft	Diameter: 3.80 inches	Volume: 52.67 bbl	Tool Weight: 2000.00 lb
Heavy Wt. Pipe:	Length: 0.00 ft	Diameter: 0.00 inches	Volume: 0.00 bbl	Weight set on Packer: 20000.00 lb
Drill Collar:	Length: 0.00 ft	Diameter: 0.00 inches	Volume: 0.00 bbl	Weight to Pull Loose: 62000.00 lb
			<u>Total Volume: 52.67 bbl</u>	Tool Chased 3.00 ft
Drill Pipe Above KB:	10.00 ft			String Weight: Initial 50000.00 lb
Depth to Top Packer:	3765.00 ft			Final 50000.00 lb
Depth to Bottom Packer:	ft			
Interval between Packers:	15.00 ft			
Tool Length:	35.00 ft			
Number of Packers:	2	Diameter: 6.75 inches		

Tool Comments:

Tool Description	Length (ft)	Serial No.	Position	Depth (ft)	Accum. Lengths
Shut-In Tool	5.00			3750.00	
Hydraulic Tool	5.00			3755.00	
Packer	5.00			3760.00	20.00 Bottom Of Top Packer
Packer	5.00			3765.00	
Anchor	10.00			3775.00	
Recorder	1.00	8524	Outside	3776.00	
Recorder	1.00	6839	Inside	3777.00	
Bull Plug	3.00			3780.00	15.00 Bottom Packers & Anchor

Total Tool Length: 35.00



DRILL STEM TEST REPORT

FLUID SUMMARY

F.G Holl Company LLC.

15-20s-16w Pawnee

9431 East Central Ste 100
Wichita Ks. 67206

Hanson A Unit 1-15

Job Ticket: 18575

DST#: 4

ATTN: Ryan Greenbaum

Test Start: 2013.10.24 @ 08:59:00

Mud and Cushion Information

Mud Type: Gel Chem
 Mud Weight: 9.00 lb/gal
 Viscosity: 54.00 sec/qt
 Water Loss: 7.60 in³
 Resistivity: ohm.m
 Salinity: 8500.00 ppm
 Filter Cake: 1.00 inches

Cushion Type:
 Cushion Length: ft
 Cushion Volume: bbl
 Gas Cushion Type:
 Gas Cushion Pressure: psia

Oil API: deg API
 Water Salinity: ppm

Recovery Information

Recovery Table

Length ft	Description	Volume bbl
1037.00	Water 100%	14.546
0.00	Chlorides 42,000.3ohms@58degrees	0.000

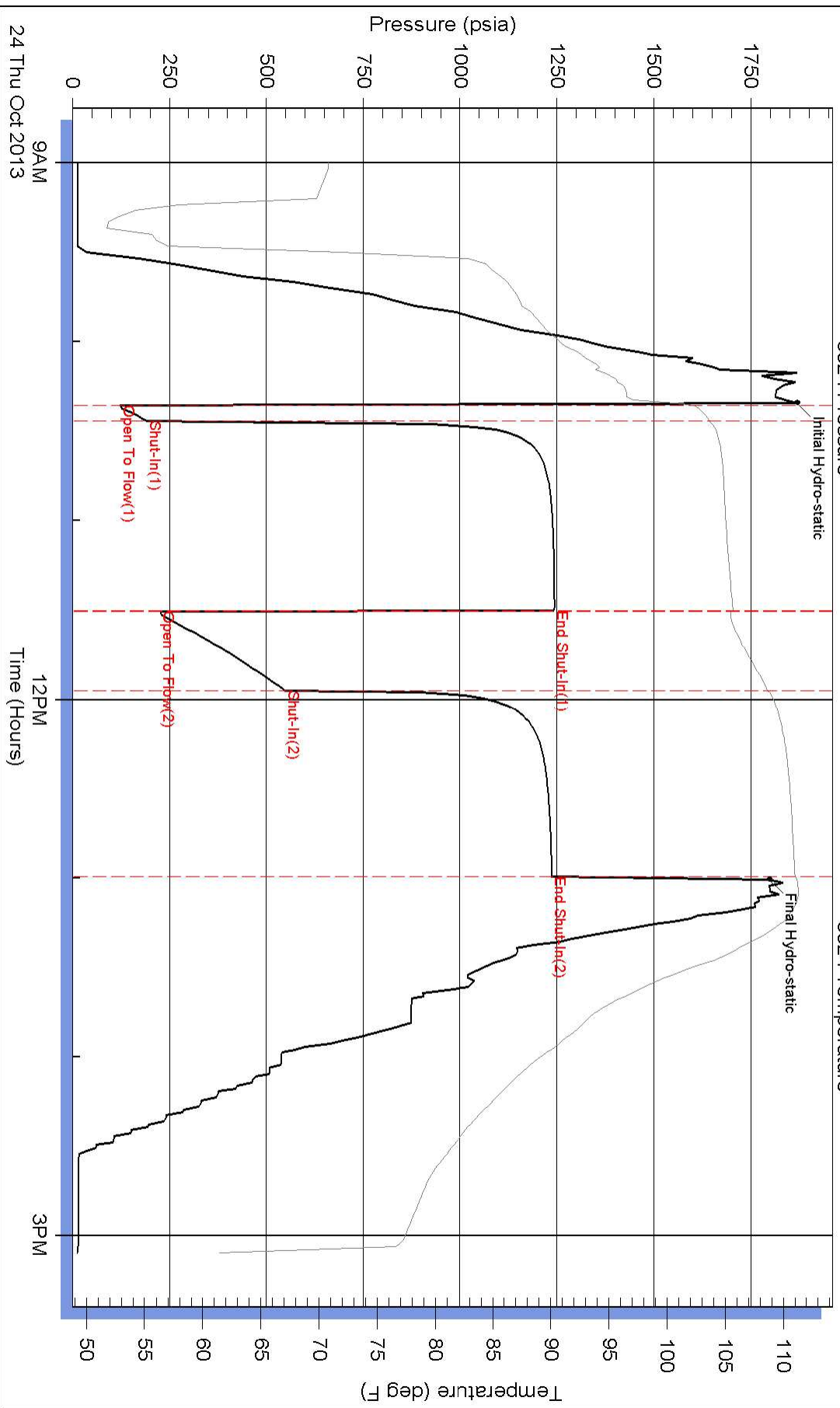
Total Length: 1037.00 ft Total Volume: 14.546 bbl

Num Fluid Samples: 0 Num Gas Bombs: 0 Serial #:

Laboratory Name: Laboratory Location:

Recovery Comments:

Pressure vs. Time



Pressure vs. Time

