



TRILOBITE TESTING, INC

DRILL STEM TEST REPORT

Sunflower Energy
 10801 Mastin Ste 920
 Overland, Ks 66210
 ATTN: Wes Hansen

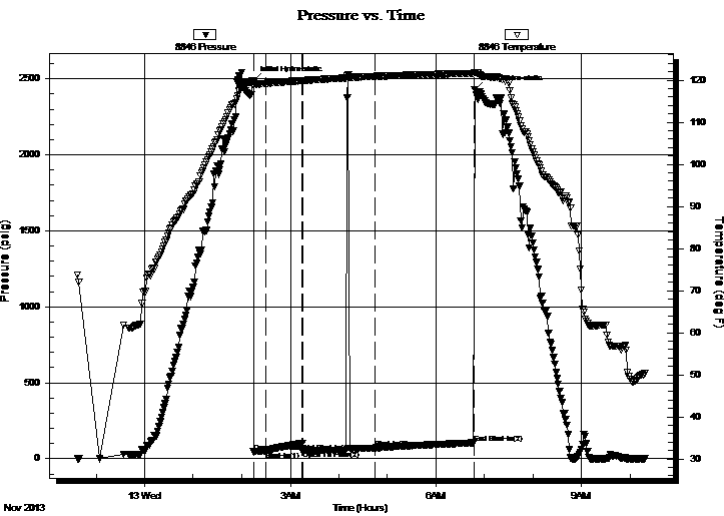
19-27-29 Gray, Ks
RPM Farms 1-19
 Job Ticket: 54698 **DST#: 4**
 Test Start: 2013.11.12 @ 22:37:15

GENERAL INFORMATION:

Formation: **Basel Penn Sand**
 Deviated: No Whipstock: ft (KB)
 Time Tool Opened: 02:14:30
 Time Test Ended: 10:18:00
 Interval: **4980.00 ft (KB) To 5040.00 ft (KB) (TVD)**
 Total Depth: 5040.00 ft (KB) (TVD)
 Hole Diameter: 7.88 inches Hole Condition: Fair
 Test Type: Conventional Bottom Hole (Reset)
 Tester: Mike Roberts
 Unit No: 65
 Reference Elevations: 2775.00 ft (KB)
 2766.00 ft (CF)
 KB to GR/CF: 9.00 ft

Serial #: 8846 **Inside**
 Press@RunDepth: 70.21 psig @ 4981.00 ft (KB) Capacity: 8000.00 psig
 Start Date: 2013.11.12 End Date: 2013.11.13 Last Calib.: 2013.11.13
 Start Time: 22:37:15 End Time: 10:18:00 Time On Btm: 2013.11.13 @ 02:14:15
 Time Off Btm: 2013.11.13 @ 06:47:45

TEST COMMENT: IF: Built to 1" blow
 IS: No return blow
 FF: No blow --flushed tool--Weak surface blow died in 10 min.
 FS: No return blow



PRESSURE SUMMARY

Time (Min.)	Pressure (psig)	Temp (deg F)	Annotation
0	2487.40	119.81	Initial Hydro-static
1	45.06	118.67	Open To Flow (1)
16	50.41	119.25	Shut-In(1)
61	102.21	119.92	End Shut-In(1)
61	54.42	119.91	Open To Flow (2)
150	70.21	120.93	Shut-In(2)
273	104.22	121.67	End Shut-In(2)
274	2430.49	121.87	Final Hydro-static

Recovery

Length (ft)	Description	Volume (bbl)
70.00	mud 100% m	0.34

* Recovery from multiple tests

Gas Rates

Choke (inches)	Pressure (psig)	Gas Rate (Mcf/d)



TRILOBITE TESTING, INC

DRILL STEM TEST REPORT

Sunflower Energy
 10801 Mastin Ste 920
 Overland, Ks 66210
 ATTN: Wes Hansen

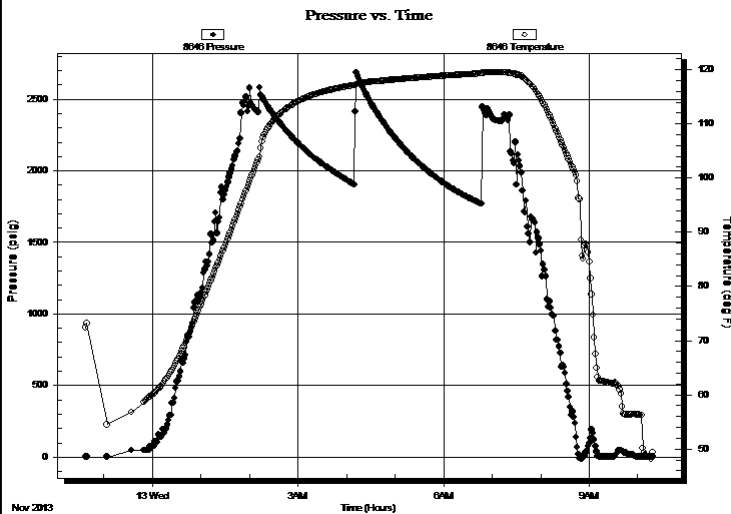
19-27-29 Gray, Ks
RPM Farms 1-19
 Job Ticket: 54698 **DST#: 4**
 Test Start: 2013.11.12 @ 22:37:15

GENERAL INFORMATION:

Formation: **Basel Penn Sand**
 Deviated: No Whipstock: ft (KB)
 Time Tool Opened: 02:14:30
 Time Test Ended: 10:18:00
 Interval: **4980.00 ft (KB) To 5040.00 ft (KB) (TVD)**
 Total Depth: 5040.00 ft (KB) (TVD)
 Hole Diameter: 7.88 inches Hole Condition: Fair
 Test Type: Conventional Bottom Hole (Reset)
 Tester: Mike Roberts
 Unit No: 65
 Reference Elevations: 2775.00 ft (KB)
 2766.00 ft (CF)
 KB to GR/CF: 9.00 ft

Serial #: 8646 Below (Straddle)
 Press@RunDepth: psig @ 5234.00 ft (KB) Capacity: 8000.00 psig
 Start Date: 2013.11.12 End Date: 2013.11.13 Last Calib.: 2013.11.13
 Start Time: 22:37:15 End Time: 10:18:15 Time On Btm:
 Time Off Btm:

TEST COMMENT: IF: Built to 1" blow
 IS: No return blow
 FF: No blow --flushed tool--Weak surface blow died in 10 min.
 FS: No return blow



PRESSURE SUMMARY

Time (Min.)	Pressure (psig)	Temp (deg F)	Annotation

Recovery

Length (ft)	Description	Volume (bbl)
70.00	mud 100% m	0.34

* Recovery from multiple tests

Gas Rates

Choke (inches)	Pressure (psig)	Gas Rate (Mcf/d)



**TRILOBITE
TESTING, INC**

DRILL STEM TEST REPORT

FLUID SUMMARY

Sunflower Energy

19-27-29 Gray, Ks

10801 Mastin Ste 920
Overland, Ks 66210

RPM Farms 1-19

Job Ticket: 54698

DST#: 4

ATTN: Wes Hansen

Test Start: 2013.11.12 @ 22:37:15

Mud and Cushion Information

Mud Type: Gel Chem

Cushion Type:

Oil API:

0 deg API

Mud Weight: 9.00 lb/gal

Cushion Length:

ft

Water Salinity:

0 ppm

Viscosity: 55.00 sec/qt

Cushion Volume:

bbbl

Water Loss: 7.58 in³

Gas Cushion Type:

Resistivity: 0.00 ohm.m

Gas Cushion Pressure:

psig

Salinity: 2400.00 ppm

Filter Cake: 1.00 inches

Recovery Information

Recovery Table

Length ft	Description	Volume bbl
70.00	mud 100% m	0.344

Total Length: 70.00 ft Total Volume: 0.344 bbl

Num Fluid Samples: 0

Num Gas Bombs: 0

Serial #:

Laboratory Name:

Laboratory Location:

Recovery Comments:

