



**TRILOBITE  
TESTING, INC.**

## DRILL STEM TEST REPORT

Vincent Oil Corporation

**22-28S-23W Ford**

155 N Market Ste 700  
Wichita, KS 67202

**Hawes Ranch 1-22**

Job Ticket: 52381

**DST#: 1**

ATTN: Jim Hall

Test Start: 2013.07.31 @ 14:03:52

### GENERAL INFORMATION:

Formation: **Pawnee**

Deviated: No Whipstock: ft (KB)

Time Tool Opened: 16:27:37

Time Test Ended: 23:46:07

Test Type: Conventional Bottom Hole (Initial)

Tester: Leal Cason

Unit No: 45

Interval: **4952.00 ft (KB) To 4982.00 ft (KB) (TVD)**

Reference Elevations: 2478.00 ft (KB)

Total Depth: 4982.00 ft (KB) (TVD)

2466.00 ft (CF)

Hole Diameter: 7.88 inches Hole Condition: Good

KB to GR/CF: 12.00 ft

### Serial #: 6798

Inside

Press@RunDepth: 377.67 psig @ 4953.00 ft (KB)

Capacity: 8000.00 psig

Start Date: 2013.07.31

End Date:

2013.07.31

Last Calib.: 2013.07.31

Start Time: 14:03:53

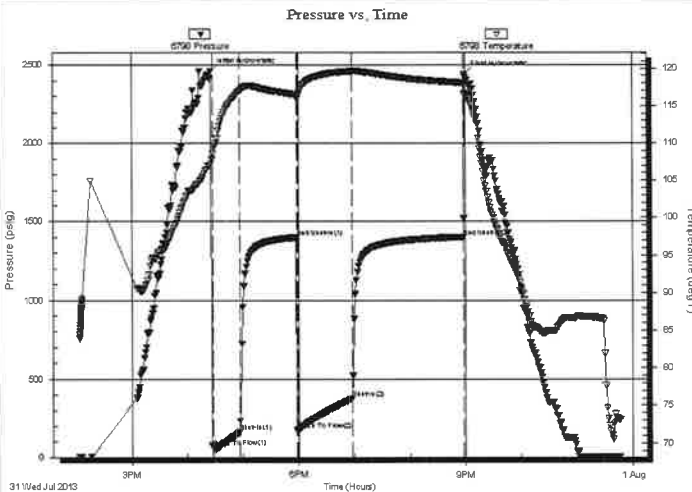
End Time:

23:46:07

Time On Btm: 2013.07.31 @ 16:25:52

Time Off Btm: 2013.07.31 @ 20:59:22

**TEST COMMENT:** IF: Strong Blow, BOB in 90 seconds  
IS: Blow Back Built to 3 inches  
FF: Strong Blow, BOB in 9 minutes  
FS: 1/2 inch Blow Back



### PRESSURE SUMMARY

Time (Min.)	Pressure (psig)	Temp (deg F)	Annotation
0	2459.59	107.12	Initial Hydro-static
2	64.62	108.54	Open To Flow (1)
31	162.49	116.97	Shut-In(1)
92	1398.98	116.48	End Shut-In(1)
93	174.47	116.01	Open To Flow (2)
152	377.67	119.64	Shut-In(2)
273	1401.06	118.04	End Shut-In(2)
274	2437.75	116.59	Final Hydro-static

### Recovery

Length (ft)	Description	Volume (bbl)
0.00	660 GIP	0.00
496.00	Water	6.96
124.00	SOMCW 2%O 12%M 86%W	1.74
184.00	GSY MMCO 15%G 12%M 12%W 61%O	2.58

### Gas Rates

	Choke (inches)	Pressure (psig)	Gas Rate (Mcf/d)



**TRILOBITE  
TESTING, INC.**

## DRILL STEM TEST REPORT

**FLUID SUMMARY**

Vincent Oil Corporation

**22-28S-23W Ford**

155 N Market Ste 700  
Wichita, KS 67202

**Hawes Ranch 1-22**

Job Ticket: 52381

**DST#: 1**

ATTN: Jim Hall

Test Start: 2013.07.31 @ 14:03:52

### Mud and Cushion Information

Mud Type: Gel Chem

Cushion Type:

Oil API:

deg API

Mud Weight: 9.00 lb/gal

Cushion Length:

ft

Water Salinity:

85000 ppm

Viscosity: 49.00 sec/qt

Cushion Volume:

bbbl

Water Loss: 9.19 in<sup>3</sup>

Gas Cushion Type:

Resistivity: ohm.m

Gas Cushion Pressure:

psig

Salinity: 5100.00 ppm

Filter Cake: 0.02 inches

### Recovery Information

Recovery Table

Length ft	Description	Volume bbbl
0.00	660 GIP	0.000
496.00	Water	6.958
124.00	SOMCW 2%O 12%M 86%W	1.739
184.00	GSY MMCO 15%G 12%M 12%W 61%O	2.581

Total Length: 804.00 ft      Total Volume: 11.278 bbl

Num Fluid Samples: 0

Num Gas Bombs: 0

Serial #:

Laboratory Name:

Laboratory Location:

Recovery Comments: RW was .08 @ 81 degrees

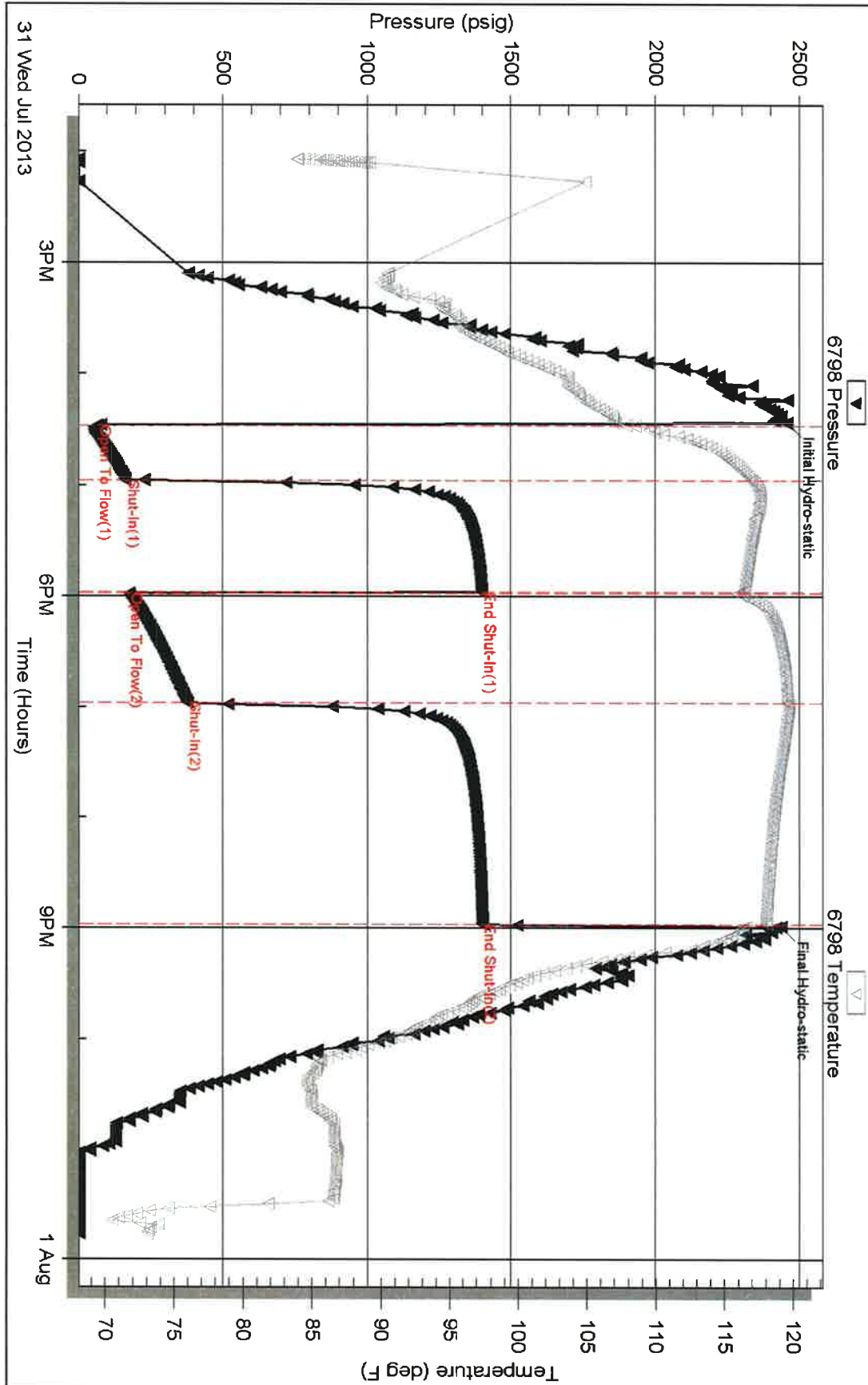
Serial #: 6798

Inside Vincent Oil Corporation

Hawes Ranch 1-22

DST Test Number: 1

### Pressure vs. Time



Triobite Testing, Inc

Ref. No: 52381

Printed: 2013.08.01 @ 07:41:54



**TRILOBITE TESTING, INC.**

## DRILL STEM TEST REPORT

Vincent Oil Corporation

**22-28S-23W Ford,KS**

155 N Market Ste 700  
Wichita, KS 67202

**Hawes Ranch 1-22**

Job Ticket: 52382

**DST#: 2**

ATTN: Jim Hall

Test Start: 2013.08.02 @ 00:33:15

### GENERAL INFORMATION:

Formation: **Penn Conglomerate**

Deviated: No Whipstock: ft (KB)

Time Tool Opened: 03:29:00

Time Test Ended: 10:27:45

Test Type: Conventional Bottom Hole (Reset)

Tester: Leal Cason

Unit No: 45

Interval: **5004.00 ft (KB) To 5129.00 ft (KB) (TVD)**

Reference Elevations: 2478.00 ft (KB)

Total Depth: 5129.00 ft (KB) (TVD)

2466.00 ft (CF)

Hole Diameter: 7.88 inches Hole Condition: Good

KB to GR/CF: 12.00 ft

### Serial #: 6798

Inside

Press@RunDepth: 1107.21 psig @ 5005.00 ft (KB)

Capacity: 8000.00 psig

Start Date: 2013.08.02

End Date:

2013.08.02

Last Calib.: 2013.08.02

Start Time: 00:33:16

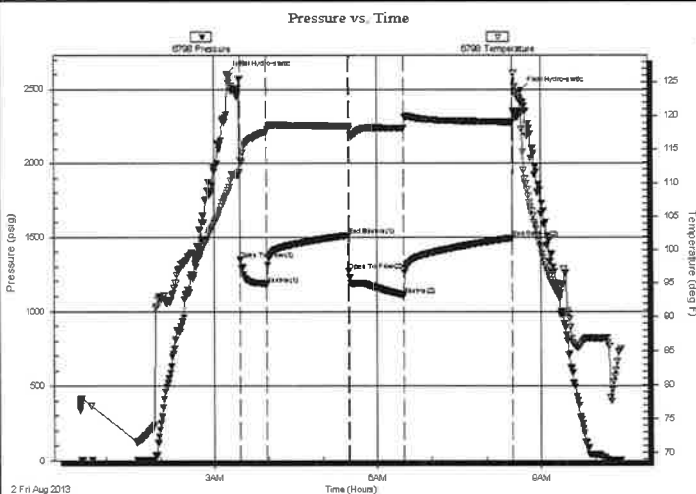
End Time:

10:27:45

Time On Btm: 2013.08.02 @ 03:15:15

Time Off Btm: 2013.08.02 @ 08:38:00

**TEST COMMENT:** IF: Strong Blow, BOB in 20 seconds, GTS in 4 minutes, Gauged & Caught Sample  
 IS: Would Not Bleed Off  
 FF: Strong Blow, BOB & GTS Immediate, Gauged & Caught Sample  
 FS: Weak 1/4 inch Blow Back



### PRESSURE SUMMARY

Time (Min.)	Pressure (psig)	Temp (deg F)	Annotation
0	2602.60	108.53	Initial Hydro-static
14	1352.07	113.28	Open To Flow (1)
43	1177.29	117.62	Shut-In(1)
134	1513.87	118.39	End Shut-In(1)
134	1273.38	118.00	Open To Flow (2)
194	1107.21	118.11	Shut-In(2)
314	1494.47	119.06	End Shut-In(2)
323	2492.78	120.24	Final Hydro-static

### Recovery

Length (ft)	Description	Volume (bbl)
0.00	GTS	0.00
90.00	SGCM 2%G 98%M	1.26

\* Recovery from multiple tests

### Gas Rates

	Choke (inches)	Pressure (psig)	Gas Rate (Mcf/d)
First Gas Rate	1.50	90.00	6382.86
Last Gas Rate	1.50	60.00	4548.70
Max. Gas Rate	1.50	180.00	11885.32



**TRILOBITE  
TESTING, INC.**

## DRILL STEM TEST REPORT

**FLUID SUMMARY**

Vincent Oil Corporation

**22-28S-23W Ford,KS**

155 N Market Ste 700  
Wichita, KS 67202

**Hawes Ranch 1-22**

Job Ticket: 52382

**DST#: 2**

ATTN: Jim Hall

Test Start: 2013.08.02 @ 00:33:15

### Mud and Cushion Information

Mud Type: Gel Chem

Cushion Type:

Oil API:

deg API

Mud Weight: 9.00 lb/gal

Cushion Length:

ft

Water Salinity:

ppm

Viscosity: 55.00 sec/qt

Cushion Volume:

bbbl

Water Loss: 9.19 in<sup>3</sup>

Gas Cushion Type:

Resistivity: ohm.m

Gas Cushion Pressure:

psig

Salinity: 7300.00 ppm

Filter Cake: 0.02 inches

### Recovery Information

Recovery Table

Length ft	Description	Volume bbl
0.00	GTS	0.000
90.00	SGCM 2%G 98%M	1.262

Total Length: 90.00 ft      Total Volume: 1.262 bbl

Num Fluid Samples: 0

Num Gas Bombs: 0

Serial #:

Laboratory Name:

Laboratory Location:

Recovery Comments:



**TRILOBITE  
TESTING, INC.**

## DRILL STEM TEST REPORT

**GAS RATES**

Vincent Oil Corporation

**22-28s-23w Ford,KS**

155 N Market Ste 700  
Wichita, KS 67202

**Hawes Ranch #1-22**

Job Ticket: 52382

**DST#: 2**

ATTN: Jim Hall

Test Start: 2013.08.02 @ 00:33:15

### Gas Rates Information

Temperature: 59 (deg F)  
Relative Density: 0.65  
Z Factor: 0.8

Gas Rates Table

Flow Period	Elapsed Time	Choke (inches)	Pressure (psig)	Gas Rate (Mcf/d)
1	10	1.00	90.00	3001.38
1	10	1.00	90.00	3001.38
1	20	1.00	180.00	5588.77
1	30	1.00	180.00	5588.77
2	10	1.00	58.00	2081.41
2	20	1.00	58.00	2081.41
2	30	1.00	58.00	2081.41
2	40	1.00	60.00	2138.91
2	50	1.00	60.00	2138.91
2	60	1.00	60.00	2138.91

Serial #: 6798

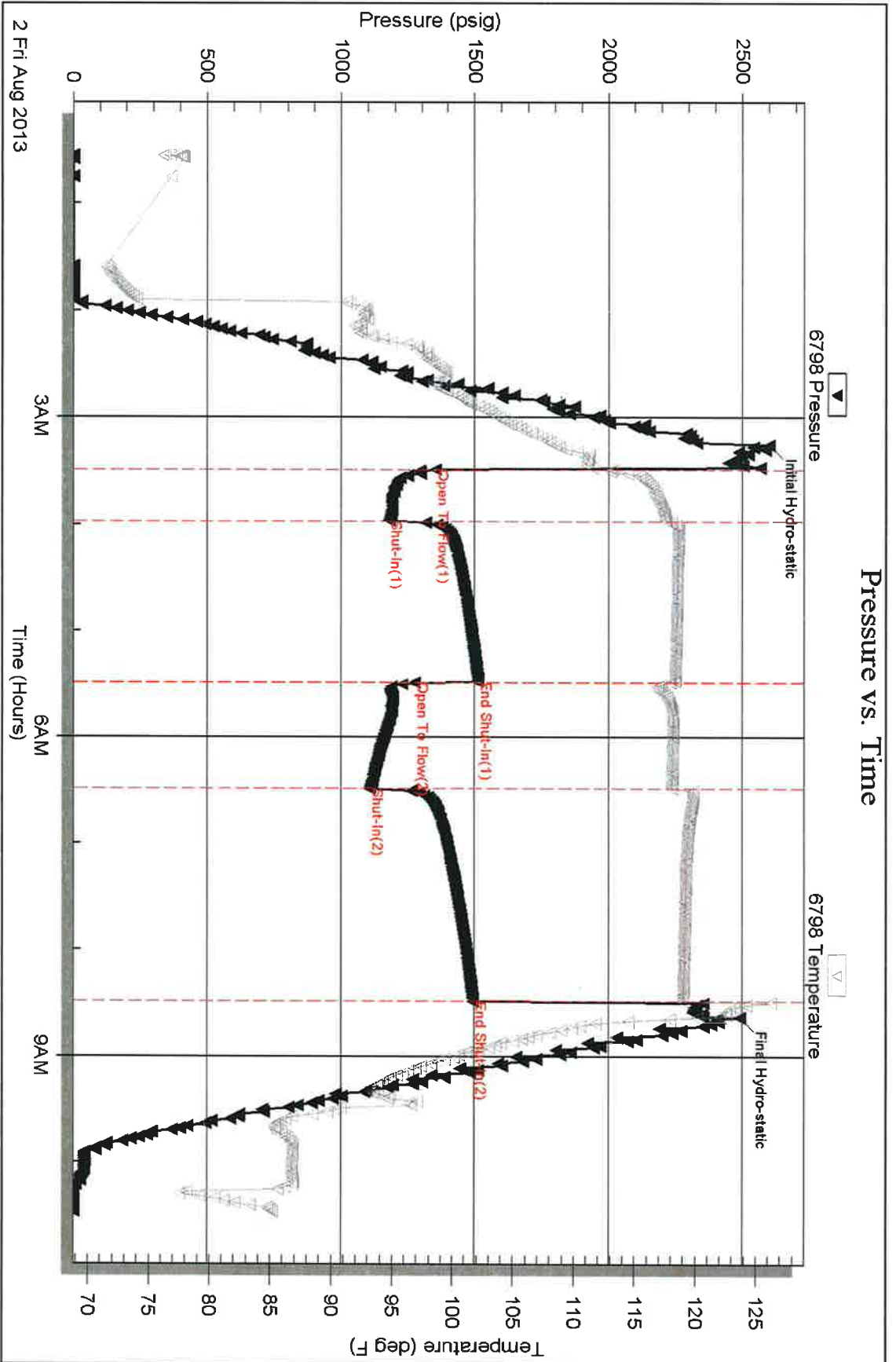
Inside

Vincent Oil Corporation

Hawes Ranch 1-22

DST Test Number: 2

### Pressure vs. Time



Tridolite Testing, Inc

Ref. No: 52382

Printed: 2013.08.02 @ 10:44:31



**TRILOBITE  
TESTING, INC.**

## DRILL STEM TEST REPORT

Vincent Oil Corporation

**22-28S-23W Ford**

155 N Market Ste 700  
Wichita, KS 67202

**Hawes Ranch 1-22**

Job Ticket: 52383

**DST#: 3**

ATTN: Jim Hall

Test Start: 2013.08.02 @ 22:29:57

### GENERAL INFORMATION:

Formation: **Mississippi**

Deviated: No Whipstock: ft (KB)

Time Tool Opened: 00:44:42

Time Test Ended: 07:39:42

Test Type: Conventional Bottom Hole (Reset)

Tester: Leal Cason

Unit No: 45

Interval: **5140.00 ft (KB) To 5152.00 ft (KB) (TVD)**

Total Depth: 5152.00 ft (KB) (TVD)

Hole Diameter: 7.88 inches Hole Condition: Good

Reference Elevations: 2478.00 ft (KB)

2466.00 ft (CF)

KB to GR/CF: 12.00 ft

### Serial #: 6798

Inside

Press@RunDepth: 222.25 psig @ 5141.00 ft (KB)

Capacity: 8000.00 psig

Start Date: 2013.08.02

End Date:

2013.08.03

Last Calib.: 2013.08.03

Start Time: 22:29:58

End Time:

07:39:42

Time On Btm: 2013.08.03 @ 00:41:57

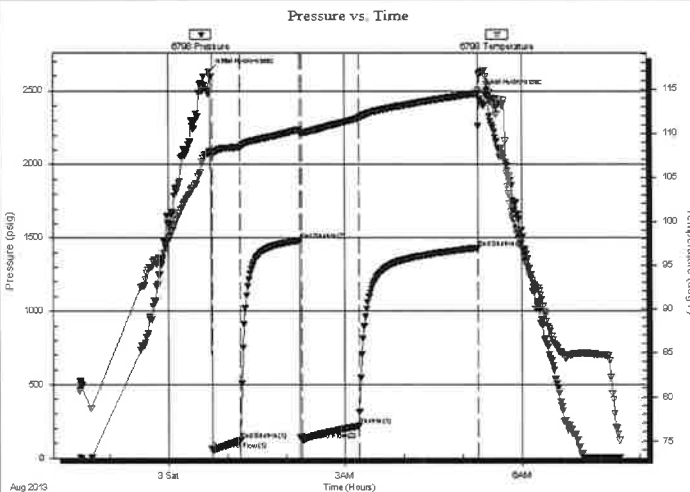
Time Off Btm: 2013.08.03 @ 05:16:27

TEST COMMENT: IF: Strong Blow, BOB in 10 seconds, GTS in 29 minutes

ISI: No Blow Back

FF: Strong Blow, BOB & GTS Immediate, Gauged & Caught Sample

FSI: No Blow Back



### PRESSURE SUMMARY

Time (Min.)	Pressure (psig)	Temp (deg F)	Annotation
0	2629.95	107.85	Initial Hydro-static
3	58.44	107.42	Open To Flow (1)
32	121.02	108.47	End Shut-In(1)
92	1482.63	110.45	End Shut-In(2)
94	120.86	110.06	Open To Flow (2)
153	222.25	111.73	Shut-In(1)
274	1431.86	114.54	End Shut-In(3)
275	2486.87	116.55	Final Hydro-static

### Recovery

Length (ft)	Description	Volume (bbl)
0.00	GTS	0.00
310.00	Water	4.35
80.00	WCM 40%W 60%M	1.12

\* Recovery from multiple tests

### Gas Rates

	Choke (inches)	Pressure (psig)	Gas Rate (Mcf/d)
First Gas Rate	0.25	14.00	45.05
Last Gas Rate	0.25	18.00	51.40
Max. Gas Rate	0.25	18.00	51.40





**TRILOBITE  
TESTING, INC.**

## DRILL STEM TEST REPORT

**FLUID SUMMARY**

Vincent Oil Corporation

**22-28S-23W Ford**

155 N Market Ste 700  
Wichita, KS 67202

**Hawes Ranch 1-22**

Job Ticket: 52383

**DST#: 3**

ATTN: Jim Hall

Test Start: 2013.08.02 @ 22:29:57

### Mud and Cushion Information

Mud Type: Gel Chem

Cushion Type:

Oil API:

deg API

Mud Weight: 9.00 lb/gal

Cushion Length:

ft

Water Salinity:

75000 ppm

Viscosity: 61.00 sec/qt

Cushion Volume:

bbbl

Water Loss: 8.79 in<sup>3</sup>

Gas Cushion Type:

Resistivity: ohm.m

Gas Cushion Pressure:

psig

Salinity: 7300.00 ppm

Filter Cake: 0.02 inches

### Recovery Information

Recovery Table

Length ft	Description	Volume bbl
0.00	GTS	0.000
310.00	Water	4.348
80.00	WCM 40%W 60%M	1.122

Total Length: 390.00 ft      Total Volume: 5.470 bbl

Num Fluid Samples: 0

Num Gas Bombs: 0

Serial #:

Laboratory Name:

Laboratory Location:

Recovery Comments: RW w as .1 @ 74 degrees



**TRILOBITE  
TESTING, INC.**

## DRILL STEM TEST REPORT

**GAS RATES**

Vincent Oil Corporation

**22-28S-23W Ford**

155 N Market Ste 700  
Wichita, KS 67202

**Hawes Ranch 1-22**

Job Ticket: 52383

**DST#: 3**

ATTN: Jim Hall

Test Start: 2013.08.02 @ 22:29:57

### Gas Rates Information

Temperature: 59 (deg F)  
Relative Density: 0.65  
Z Factor: 0.8

Gas Rates Table

Flow Period	Elapsed Time	Choke (inches)	Pressure (psig)	Gas Rate (Mcf/d)
2	10	0.25	14.00	45.05
2	10	0.25	14.00	45.05
2	20	0.25	16.00	48.23
2	30	0.25	18.00	51.40
2	40	0.25	18.00	51.40
2	50	0.25	18.00	51.40

### Pressure vs. Time

