



**TRILOBITE
TESTING, INC.**

DRILL STEM TEST REPORT

John O. Farmer Inc.
370 W. Wichita Ave.
Russell, KS 67665-2635
ATTN: Austin Klaus

19-15s.-12w. Lyon Co. KS
Converse 1
Job Ticket: 52346 **DST#: 1**
Test Start: 2013.08.05 @ 15:37:12

GENERAL INFORMATION:

Formation: **Simpson Sand**
Deviated: No Whipstock: 0.00 ft (KB)
Time Tool Opened: 17:22:57
Time Test Ended: 23:07:27
Interval: **2949.00 ft (KB) To 2967.00 ft (KB) (TVD)**
Total Depth: 2967.00 ft (KB) (TVD)
Hole Diameter: 7.88 inches Hole Condition: Fair
Reference Elevations: 1250.00 ft (KB)
1242.00 ft (CF)
KB to GR/CF: 8.00 ft
Test Type: Conventional Bottom Hole (Initial)
Tester: Ryan Reynolds
Unit No: 48

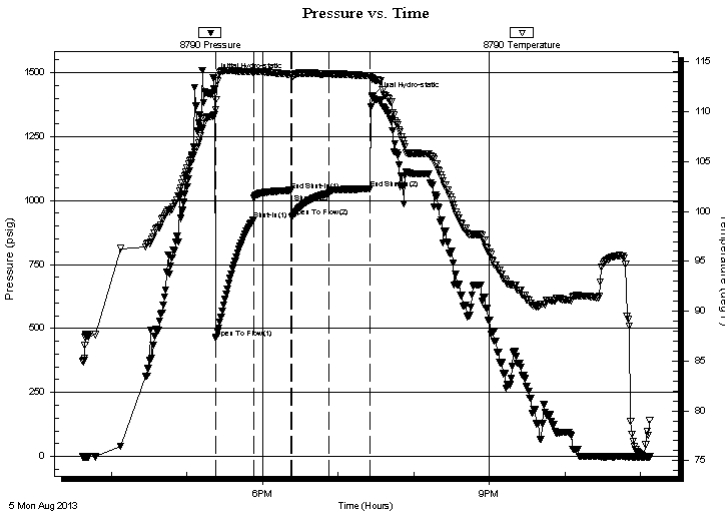
Serial #: 8790

Inside

Press @ Run Depth: 1028.01 psig @ 2950.00 ft (KB) Capacity: 8000.00 psig
Start Date: 2013.08.05 End Date: 2013.08.05 Last Calib.: 2013.08.05
Start Time: 15:37:17 End Time: 23:07:26 Time On Btm: 2013.08.05 @ 17:20:57
Time Off Btm: 2013.08.05 @ 19:26:42

TEST COMMENT: IF: Strong blow . BOB @ 30sec. No GTS
IS: No blow
FF: Strong blow . BOB @ 1 1/2min. --- 1/2"
FS: No blow

PRESSURE SUMMARY



Time (Min.)	Pressure (psig)	Temp (deg F)	Annotation
0	1479.32	109.61	Initial Hydro-static
2	462.06	110.19	Open To Flow (1)
32	925.51	113.99	Shut-In(1)
62	1039.71	113.76	End Shut-In(1)
63	935.59	113.71	Open To Flow (2)
92	1028.01	113.81	Shut-In(2)
125	1045.23	113.61	End Shut-In(2)
126	1407.85	113.42	Final Hydro-static

Recovery

Length (ft)	Description	Volume (bbl)
1400.00	MCW 11% mud, 89% w tr	16.53
945.00	MCW 23% mud, 77% w tr	13.26

Gas Rates

Choke (inches)	Pressure (psig)	Gas Rate (Mcf/d)



**TRILOBITE
TESTING, INC.**

DRILL STEM TEST REPORT

FLUID SUMMARY

John O. Farmer Inc.

19-15s.-12w. Lyon Co. KS

370 W. Wichita Ave.
Russell, KS 67665-2635

Converse 1

Job Ticket: 52346

DST#: 1

ATTN: Austin Klaus

Test Start: 2013.08.05 @ 15:37:12

Mud and Cushion Information

Mud Type: Gel Chem

Cushion Type:

Oil API:

deg API

Mud Weight: 9.00 lb/gal

Cushion Length:

ft

Water Salinity: 21000 ppm

Viscosity: 52.00 sec/qt

Cushion Volume:

bbf

Water Loss: 9.59 in³

Gas Cushion Type:

Resistivity: ohm.m

Gas Cushion Pressure:

psig

Salinity: 1000.00 ppm

Filter Cake: 0.02 inches

Recovery Information

Recovery Table

Length ft	Description	Volume bbf
1400.00	MCW 11% mud, 89% w tr	16.532
945.00	MCW 23% mud, 77% w tr	13.256

Total Length: 2345.00 ft Total Volume: 29.788 bbf

Num Fluid Samples: 0

Num Gas Bombs: 0

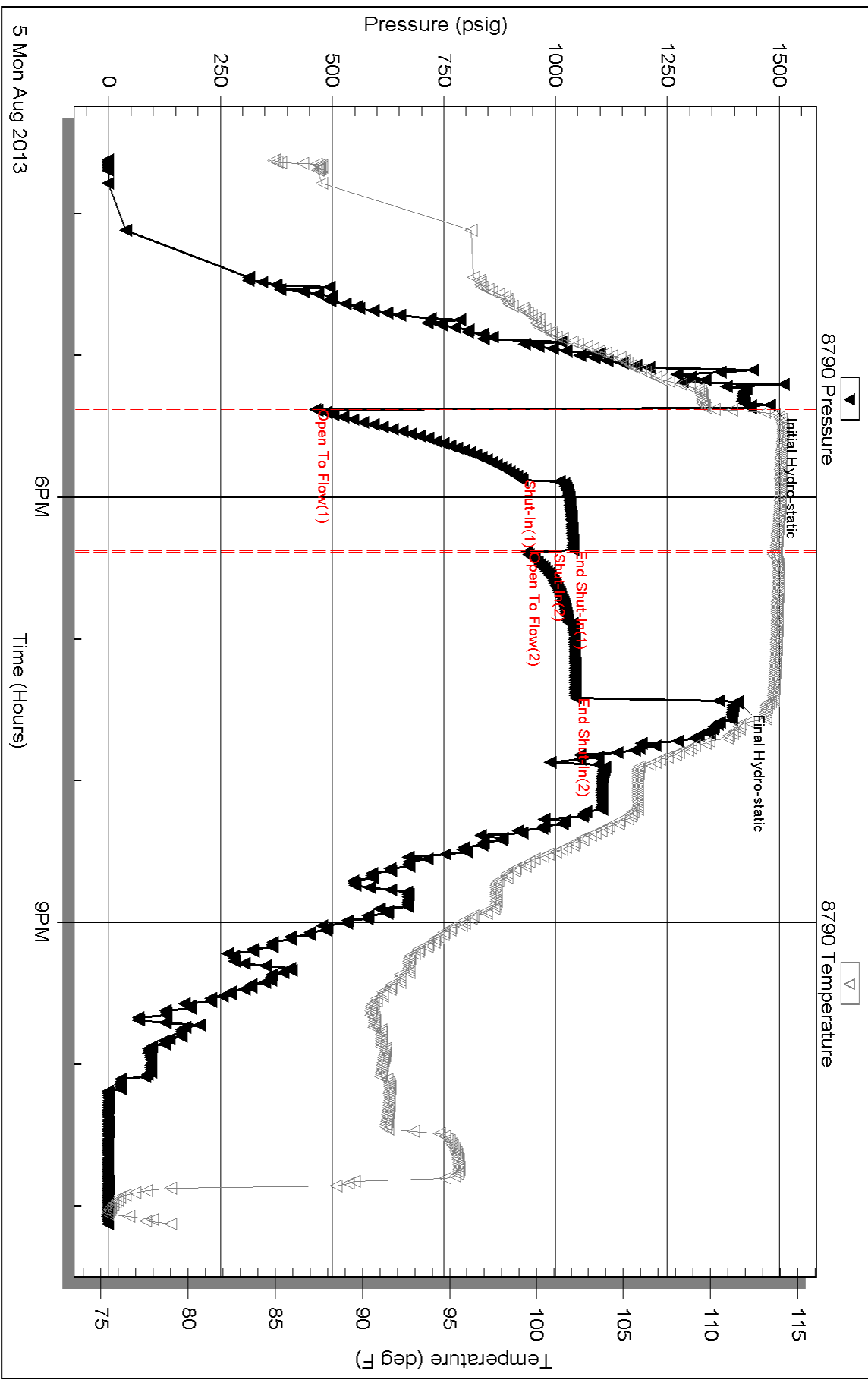
Serial #: none

Laboratory Name:

Laboratory Location:

Recovery Comments:

Pressure vs. Time



5 Mon Aug 2013