



TRILOBITE TESTING, INC.

DRILL STEM TEST REPORT

Woolsey Operating Co. LLC

5-34s-10w Barber Ks.

125 N. Market, Ste. 1000
Wichita Ks. 67202

Circle GU A#2

Job Ticket: 52291

DST#: 1

ATTN: Bill Klaver

Test Start: 2013.08.06 @ 05:16:19

GENERAL INFORMATION:

Formation: **Miss.**

Deviated: No Whipstock: ft (KB)

Time Tool Opened: 09:02:04

Time Test Ended: 16:28:34

Test Type: Conventional Bottom Hole (Initial)

Tester: Gary Pevoteaux

Unit No: 56

Interval: 4536.00 ft (KB) To 4658.00 ft (KB) (TVD)

Reference Elevations: 1438.00 ft (KB)

Total Depth: 4658.00 ft (KB) (TVD)

1430.00 ft (CF)

Hole Diameter: 7.88 inches Hole Condition: Fair

KB to GR/CF: 8.00 ft

Serial #: 8352 Inside

Press @ Run Depth: 118.22 psig @ 4537.00 ft (KB)

Capacity: 8000.00 psig

Start Date: 2013.08.06

End Date:

2013.08.06

Last Calib.:

2013.08.06

Start Time: 05:16:24

End Time:

16:28:34

Time On Btm:

2013.08.06 @ 08:58:04

Time Off Btm:

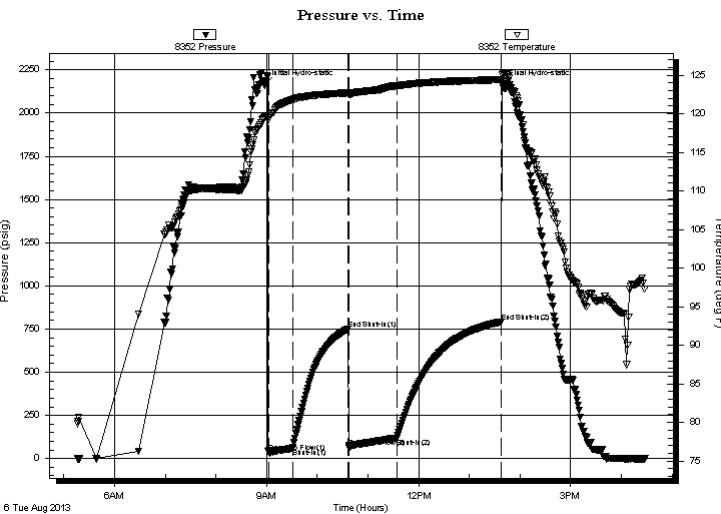
2013.08.06 @ 13:39:04

TEST COMMENT: IF: Strong blow . B.O.B. in 3 1/2 mins.

IS: No blow .

FF: Strong blow . B.O.B. in 15 secs.

FS: No blow .



PRESSURE SUMMARY

Time (Min.)	Pressure (psig)	Temp (deg F)	Annotation
0	2164.67	119.54	Initial Hydro-static
4	38.87	119.18	Open To Flow (1)
33	59.79	121.82	Shut-In(1)
99	751.10	122.71	End Shut-In(1)
100	66.73	122.43	Open To Flow (2)
156	118.22	123.60	Shut-In(2)
280	791.78	124.40	End Shut-In(2)
281	2167.21	125.13	Final Hydro-static

Recovery

Length (ft)	Description	Volume (bbl)
75.00	SOC, GM 1%o 19%g 80%m	0.37
150.00	GCM 6%g 94%m	0.74
0.00	2685 ft. of GIP	0.00

Gas Rates

	Choke (inches)	Pressure (psig)	Gas Rate (Mcf/d)



**TRILOBITE
TESTING, INC.**

DRILL STEM TEST REPORT

FLUID SUMMARY

Woolsey Operating Co. LLC

5-34s-10w Barber Ks.

125 N. Market, Ste. 1000
Wichita Ks. 67202

Circle GU A#2

Job Ticket: 52291

DST#: 1

ATTN: Bill Klaver

Test Start: 2013.08.06 @ 05:16:19

Mud and Cushion Information

Mud Type: Gel Chem	Cushion Type:	Oil API:	deg API
Mud Weight: 9.00 lb/gal	Cushion Length: ft	Water Salinity:	3000 ppm
Viscosity: 45.00 sec/qt	Cushion Volume: bbl		
Water Loss: 9.59 in ³	Gas Cushion Type:		
Resistivity: 0.00 ohm.m	Gas Cushion Pressure: psig		
Salinity: 3000.00 ppm			
Filter Cake: 0.20 inches			

Recovery Information

Recovery Table

Length ft	Description	Volume bbl
75.00	SOC, GM 1%o 19%g 80%m	0.369
150.00	GCM 6%g 94%m	0.738
0.00	2685 ft. of GIP	0.000

Total Length: 225.00 ft Total Volume: 1.107 bbl

Num Fluid Samples: 0

Num Gas Bombs: 0

Serial #: none

Laboratory Name:

Laboratory Location:

Recovery Comments:

Serial #: 8352

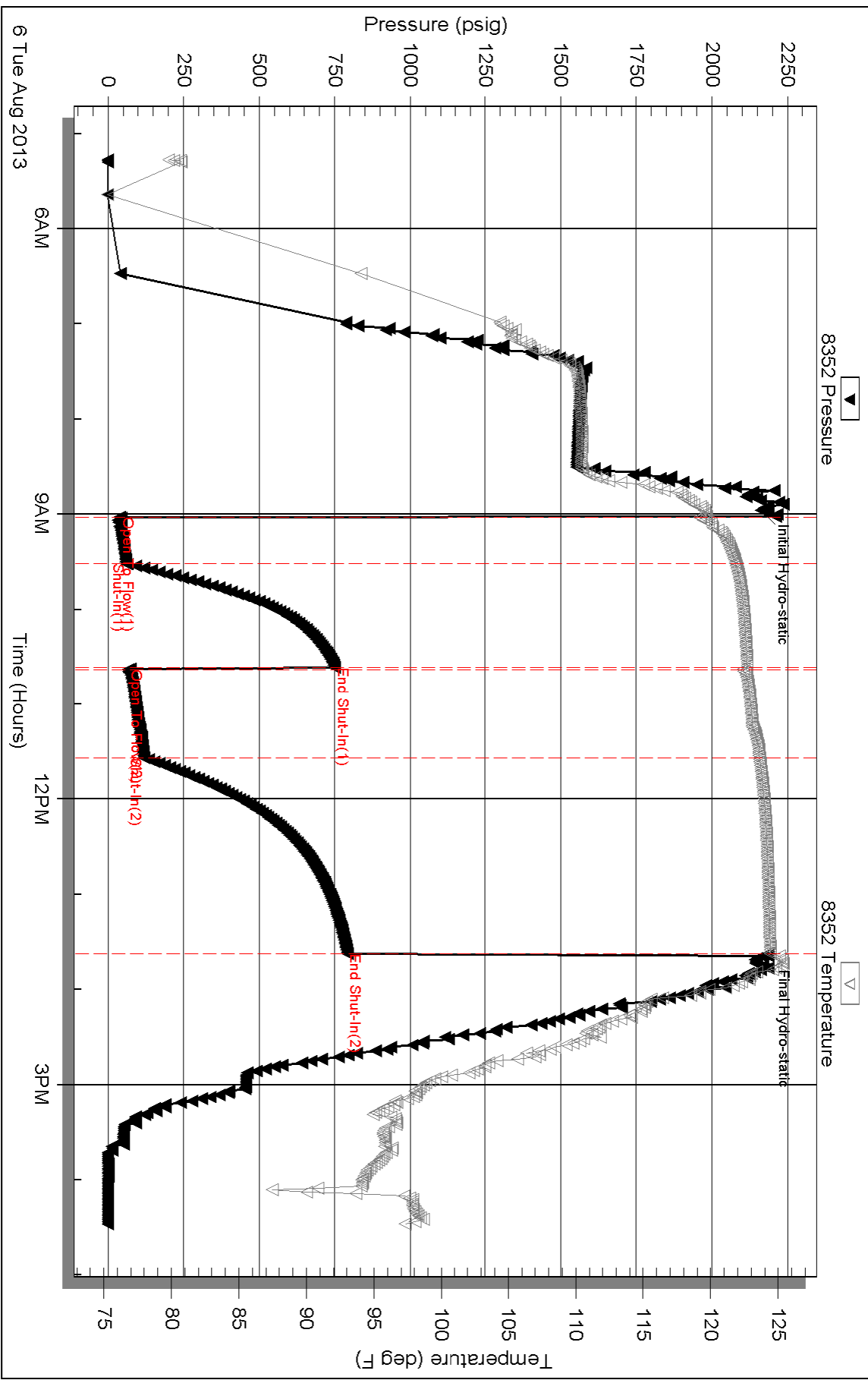
Inside

Woodsey Operating Co. LLC

Circle GU A#2

DST Test Number: 1

Pressure vs. Time



Triobite Testing, Inc

Ref. No: 52291

Printed: 2013.08.07 @ 07:46:32