



**TRILOBITE TESTING, INC.**

# DRILL STEM TEST REPORT

Hess Oil Comp  
 p.o. box 1009  
 McPherson, Ks  
 67460-1009  
 ATTN: Seth Evenson

**16-17s-22w Ness, Ks**  
**McCurdy #1**  
 Job Ticket: 54636 **DST#: 2**  
 Test Start: 2013.09.26 @ 10:55:54

## GENERAL INFORMATION:

Formation: **Lower Cherokee**  
 Deviated: No Whipstock: 0.00 ft (KB)  
 Time Tool Opened: 13:17:34  
 Time Test Ended: 18:55:03  
 Interval: **4264.00 ft (KB) To 4318.00 ft (KB) (TVD)**  
 Total Depth: 4318.00 ft (KB) (TVD)  
 Hole Diameter: 7.88 inches Hole Condition: Fair  
 Test Type: Conventional Bottom Hole (Reset)  
 Tester: Shane McBride  
 Unit No: 55  
 Reference Elevations: 2301.00 ft (KB)  
 2296.00 ft (CF)  
 KB to GR/CF: 5.00 ft

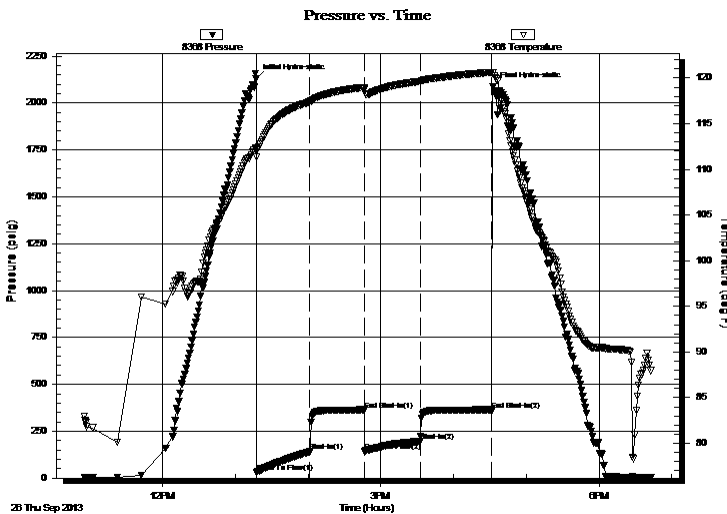
## Serial #: 8368

Outside

Press @ Run Depth: 196.82 psig @ 4265.00 ft (KB) Capacity: 8000.00 psig  
 Start Date: 2013.09.26 End Date: 2013.09.26 Last Calib.: 2013.09.26  
 Start Time: 10:55:54 End Time: 18:43:03 Time On Btm: 2013.09.26 @ 13:17:19  
 Time Off Btm: 2013.09.26 @ 16:32:33

TEST COMMENT: 11 1/2" in blow  
 No return  
 5 1/4" in blow  
 No return

## PRESSURE SUMMARY



Time (Min.)	Pressure (psig)	Temp (deg F)	Annotation
0	2129.76	112.36	Initial Hydro-static
1	29.93	111.31	Open To Flow (1)
45	141.08	117.39	Shut-In(1)
89	364.05	118.99	End Shut-In(1)
90	143.43	118.81	Open To Flow (2)
135	196.82	119.64	Shut-In(2)
194	364.43	120.62	End Shut-In(2)
196	2087.15	120.54	Final Hydro-static

## Recovery

Length (ft)	Description	Volume (bbl)
300.00	water 100%w	1.48
70.00	m c w 15%m 85%w	0.46

## Gas Rates

Choke (inches)	Pressure (psig)	Gas Rate (Mcf/d)

\* Recovery from multiple tests



**TRILOBITE  
TESTING, INC.**

# DRILL STEM TEST REPORT

**FLUID SUMMARY**

Hess Oil Comp

**16-17s-22w Ness, Ks**

p.o. box 1009  
McPherson, Ks  
67460-1009

**McCurdy #1**

Job Ticket: 54636

**DST#: 2**

ATTN: Seth Evenson

Test Start: 2013.09.26 @ 10:55:54

## Mud and Cushion Information

Mud Type: Gel Chem

Cushion Type:

Oil API:

0 deg API

Mud Weight: 9.00 lb/gal

Cushion Length:

ft

Water Salinity:

28000 ppm

Viscosity: 61.00 sec/qt

Cushion Volume:

bbbl

Water Loss: 7.97 in<sup>3</sup>

Gas Cushion Type:

Resistivity: 0.00 ohm.m

Gas Cushion Pressure:

psig

Salinity: 5000.00 ppm

Filter Cake: 1.00 inches

## Recovery Information

Recovery Table

Length ft	Description	Volume bbbl
300.00	water 100%w	1.475
70.00	m c w 15% m 85% w	0.463

Total Length: 370.00 ft      Total Volume: 1.938 bbl

Num Fluid Samples: 0

Num Gas Bombs: 0

Serial #:

Laboratory Name:

Laboratory Location:

Recovery Comments: rw .225 @ 77\*f = 28,000 chlor

Serial #: 8368

Outside Hess Oil Comp

McCurdy #1

DST Test Number: 2

