



**TRILOBITE  
TESTING, INC.**

# DRILL STEM TEST REPORT

Sam Gary Jr & Associates

**24-15S-16W-Ellis Co**

1515 Wynkoop Ste 700  
Denver CO 80202

**Candace #1-24**

Job Ticket: 54389

**DST#: 1**

ATTN: Chris Mitchell

Test Start: 2013.08.19 @ 00:55:13

## GENERAL INFORMATION:

Formation: **H**  
 Deviated: No Whipstock: ft (KB)  
 Time Tool Opened: 02:43:13  
 Time Test Ended: 08:25:33  
 Interval: **3256.00 ft (KB) To 3280.00 ft (KB) (TVD)**  
 Total Depth: 3530.00 ft (KB) (TVD)  
 Hole Diameter: 7.88 inches Hole Condition: Good  
 Test Type: Conventional Straddle (Initial)  
 Tester: Tate Lang  
 Unit No: 41  
 Reference Elevations: 1866.00 ft (KB)  
 1856.00 ft (CF)  
 KB to GR/CF: 10.00 ft

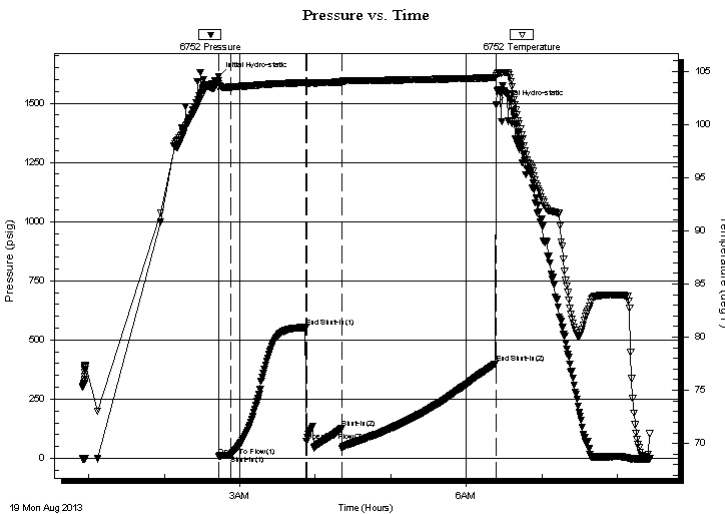
## Serial #: 6752

Inside

Press @ Run Depth: 126.63 psig @ 3257.00 ft (KB) Capacity: 8000.00 psig  
 Start Date: 2013.08.19 End Date: 2013.08.19 Last Calib.: 2013.08.19  
 Start Time: 00:55:14 End Time: 08:25:33 Time On Btm: 2013.08.19 @ 02:43:03  
 Time Off Btm: 2013.08.19 @ 06:23:33

TEST COMMENT: Weak surface blow built to 1/4 in.  
 Dead no blow back  
 Dead no blow  
 Dead no blow back

## PRESSURE SUMMARY



Time (Min.)	Pressure (psig)	Temp (deg F)	Annotation
0	1611.82	103.86	Initial Hydro-static
1	8.78	103.48	Open To Flow (1)
10	13.99	103.54	Shut-In(1)
69	552.87	103.95	End Shut-In(1)
70	70.46	103.88	Open To Flow (2)
98	126.63	104.02	Shut-In(2)
221	400.33	104.41	End Shut-In(2)
221	1492.92	104.55	Final Hydro-static

## Recovery

Length (ft)	Description	Volume (bbl)
20.00	3%O 97%M	0.28

## Gas Rates

Choke (inches)	Pressure (psig)	Gas Rate (Mcf/d)







**TRILOBITE  
TESTING, INC.**

# DRILL STEM TEST REPORT

**FLUID SUMMARY**

Sam Gary Jr & Associates

**24-15S-16W-Ellis Co**

1515 Wynkoop Ste 700  
Denver CO 80202

**Candace #1-24**

Job Ticket: 54389

**DST#: 1**

ATTN: Chris Mitchell

Test Start: 2013.08.19 @ 00:55:13

## Mud and Cushion Information

Mud Type: Gel Chem

Cushion Type:

Oil API:

deg API

Mud Weight: 9.00 lb/gal

Cushion Length:

ft

Water Salinity:

ppm

Viscosity: 51.00 sec/qt

Cushion Volume:

bbbl

Water Loss: 7.99 in<sup>3</sup>

Gas Cushion Type:

Resistivity: ohm.m

Gas Cushion Pressure:

psig

Salinity: 4500.00 ppm

Filter Cake: 1.00 inches

## Recovery Information

Recovery Table

Length ft	Description	Volume bbl
20.00	3%O 97%M	0.281

Total Length: 20.00 ft      Total Volume: 0.281 bbl

Num Fluid Samples: 0

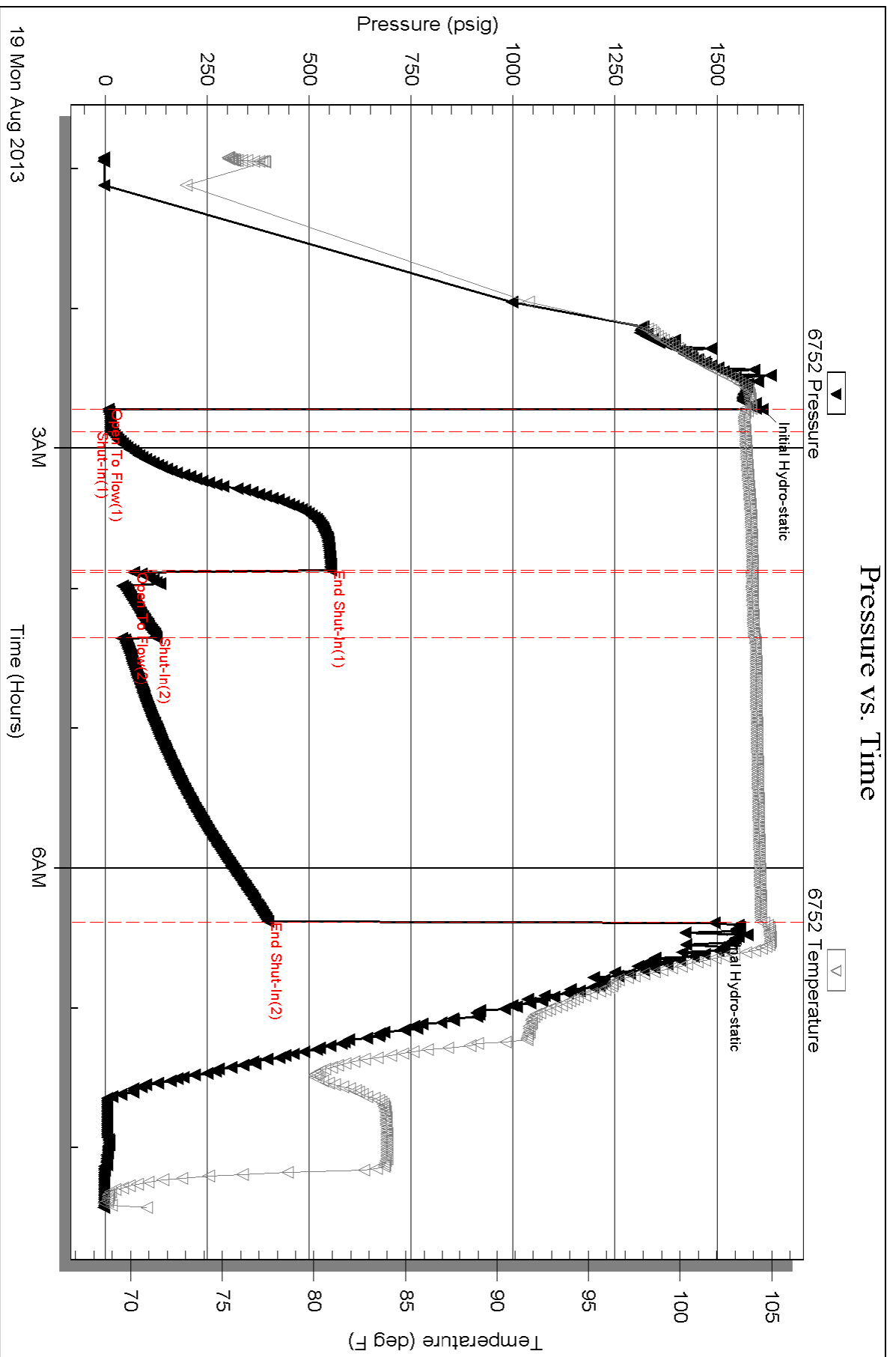
Num Gas Bombs: 0

Serial #:

Laboratory Name:

Laboratory Location:

Recovery Comments:



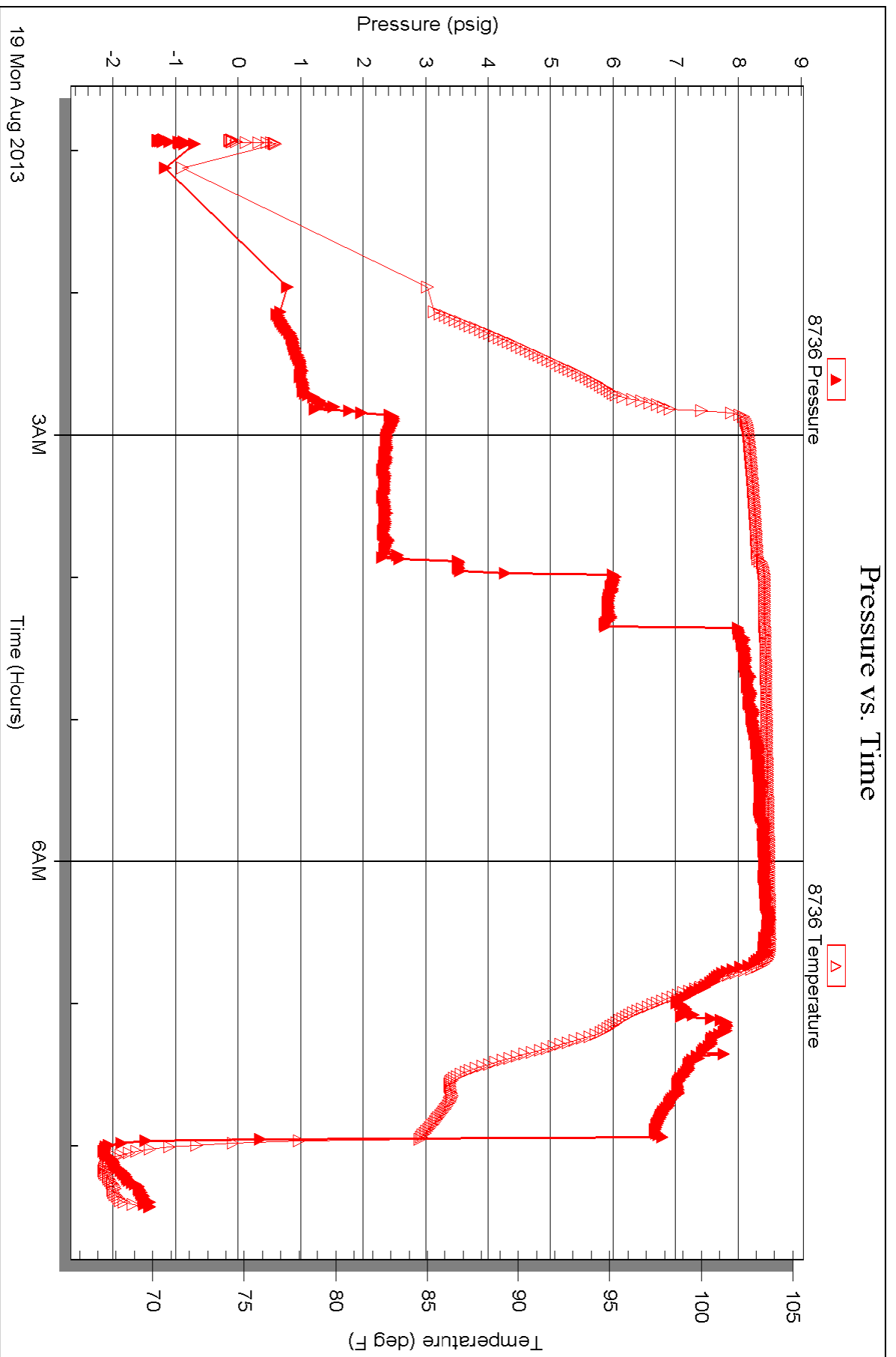
Serial #: 8736

Fluid

Sam Gary Jr & Associates

Candace #1-24

DST Test Number: 1



Triobite Testing, Inc

Ref. No: 54389

Printed: 2013.08.19 @ 08:54:23

