



**TRILOBITE  
TESTING, INC.**

# DRILL STEM TEST REPORT

Vincent Oil Corp

**15-29s-22w Ford, KS**

155 N Market St 700  
Wichita, KS 67202

**Ellis #3-15**

Job Ticket: 52843

**DST#: 1**

ATTN: Tom Dudgeon

Test Start: 2013.08.20 @ 15:35:24

## GENERAL INFORMATION:

Formation: **Conglomerent**

Deviated: No Whipstock: 0.00 ft (KB)

Time Tool Opened: 17:58:49

Time Test Ended: 00:45:04

Test Type: Conventional Bottom Hole (Initial)

Tester: Shane McBride

Unit No: 15

**Interval: 5186.00 ft (KB) To 5291.00 ft (KB) (TVD)**

Reference Elevations: 2504.00 ft (KB)

Total Depth: 5291.00 ft (KB) (TVD)

2492.00 ft (CF)

Hole Diameter: 7.88 inches Hole Condition: Fair

KB to GR/CF: 12.00 ft

**Serial #: 8368 Outside**

Press @ Run Depth: 32.05 psig @ 5187.00 ft (KB)

Capacity: 8000.00 psig

Start Date: 2013.08.20

End Date:

2013.08.21

Last Calib.: 2013.08.21

Start Time: 15:35:24

End Time:

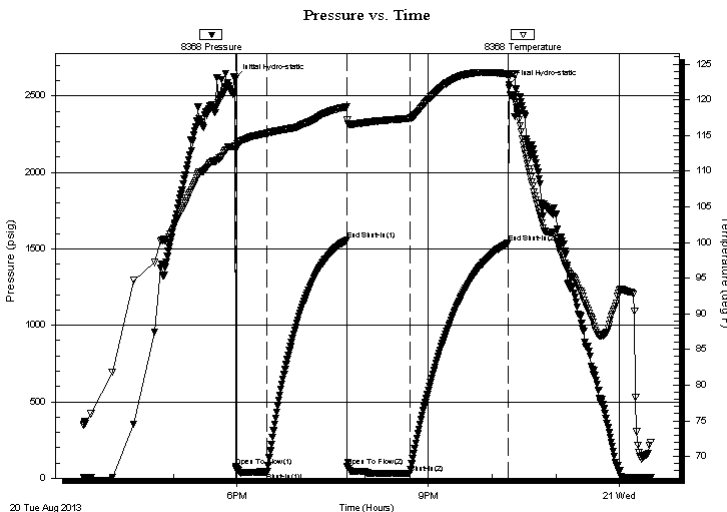
00:29:04

Time On Btm: 2013.08.20 @ 17:58:04

Time Off Btm: 2013.08.20 @ 22:15:49

**TEST COMMENT:** B.O.B. in 1 min  
No return  
B.O.B. @ open G.T.S. in 17 min to weak to gauge  
No return

## PRESSURE SUMMARY



Time (Min.)	Pressure (psig)	Temp (deg F)	Annotation
0	2612.05	113.47	Initial Hydro-static
1	77.86	113.09	Open To Flow (1)
30	41.18	115.33	Shut-In(1)
105	1557.25	119.00	End Shut-In(1)
106	74.35	117.14	Open To Flow (2)
165	32.05	117.40	Shut-In(2)
258	1539.41	123.57	End Shut-In(2)
258	2573.07	123.21	Final Hydro-static

## Recovery

Length (ft)	Description	Volume (bbl)
35.00	mud 100%m	0.49
0.00	GTS	0.00

## Gas Rates

	Choke (inches)	Pressure (psig)	Gas Rate (Mcf/d)



**TRILOBITE  
TESTING, INC.**

## DRILL STEM TEST REPORT

**FLUID SUMMARY**

Vincent Oil Corp

**15-29s-22w Ford, KS**

155 N Market St 700  
Wichita, KS 67202

**Ellis #3-15**

Job Ticket: 52843

**DST#: 1**

ATTN: Tom Dudgeon

Test Start: 2013.08.20 @ 15:35:24

### Mud and Cushion Information

Mud Type: Gel Chem

Cushion Type:

Oil API:

0 deg API

Mud Weight: 9.00 lb/gal

Cushion Length:

ft

Water Salinity:

0 ppm

Viscosity: 54.00 sec/qt

Cushion Volume:

bbbl

Water Loss: 11.18 in<sup>3</sup>

Gas Cushion Type:

Resistivity: 0.00 ohm.m

Gas Cushion Pressure:

psig

Salinity: 6400.00 ppm

Filter Cake: 1.00 inches

### Recovery Information

Recovery Table

Length ft	Description	Volume bbl
35.00	mud 100%m	0.491
0.00	GTS	0.000

Total Length: 35.00 ft

Total Volume: 0.491 bbl

Num Fluid Samples: 0

Num Gas Bombs: 0

Serial #:

Laboratory Name:

Laboratory Location:

Recovery Comments:

### Pressure vs. Time

