



**TRILOBITE TESTING, INC.**

# DRILL STEM TEST REPORT

Vincent Oil Corp

**15-29s-22w Ford, KS**

155 N Market St 700  
Wichita, KS 67202

**Ellis #3-15**

ATTN: Tom Dudgeon

Job Ticket: 52349

**DST#: 2**

Test Start: 2013.08.21 @ 13:49:25

## GENERAL INFORMATION:

Formation: **Miss.**

Deviated: No Whipstock: 0.00 ft (KB)

Time Tool Opened: 16:25:10

Time Test Ended: 20:32:40

Test Type: Conventional Bottom Hole (Reset)

Tester: Ryan Reynolds

Unit No: 48

**Interval: 5298.00 ft (KB) To 5324.00 ft (KB) (TVD)**

Reference Elevations: 2504.00 ft (KB)

Total Depth: 5324.00 ft (KB) (TVD)

2492.00 ft (CF)

Hole Diameter: 7.88 inches Hole Condition: Fair

KB to GR/CF: 12.00 ft

**Serial #: 8790 Inside**

Press @ Run Depth: 23.39 psig @ 5299.00 ft (KB)

Capacity: 8000.00 psig

Start Date: 2013.08.21

End Date:

2013.08.21

Last Calib.:

2013.08.21

Start Time: 13:49:30

End Time:

20:32:39

Time On Btm:

2013.08.21 @ 16:19:55

Time Off Btm:

2013.08.21 @ 18:30:40

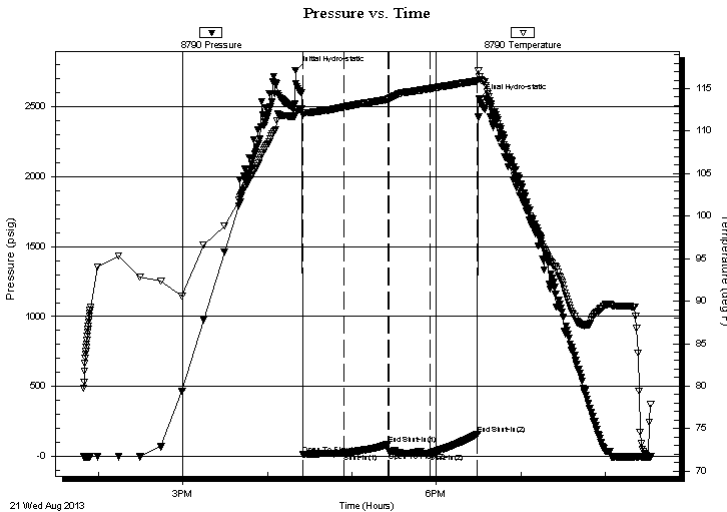
TEST COMMENT: IF: Weak blow. Surf. - dead @ 7min.

IS: No blow

FF: No - Weak blow. 0 - surf. @ 22-30min.

FS: No blow

## PRESSURE SUMMARY



| Time (Min.) | Pressure (psig) | Temp (deg F) | Annotation           |
|-------------|-----------------|--------------|----------------------|
| 0           | 2759.55         | 112.01       | Initial Hydro-static |
| 6           | 13.08           | 111.86       | Open To Flow (1)     |
| 35          | 24.40           | 112.83       | Shut-In(1)           |
| 66          | 87.00           | 113.72       | End Shut-In(1)       |
| 67          | 32.71           | 113.80       | Open To Flow (2)     |
| 96          | 23.39           | 115.01       | Shut-In(2)           |
| 130         | 160.12          | 115.92       | End Shut-In(2)       |
| 131         | 2559.17         | 116.34       | Final Hydro-static   |

## Recovery

| Length (ft) | Description                      | Volume (bbl) |
|-------------|----------------------------------|--------------|
| 10.00       | VSLI O&WCM 1%oil, 2%w tr, 97%mud | 0.05         |
| 0.00        | 60' GIP                          | 0.00         |
|             |                                  |              |
|             |                                  |              |
|             |                                  |              |

## Gas Rates

|  | Choke (inches) | Pressure (psig) | Gas Rate (Mcf/d) |
|--|----------------|-----------------|------------------|
|  |                |                 |                  |

\* Recovery from multiple tests



**TRILOBITE  
TESTING, INC.**

# DRILL STEM TEST REPORT

**FLUID SUMMARY**

Vincent Oil Corp

**15-29s-22w Ford, KS**

155 N Market St 700  
Wichita, KS 67202

**Ellis #3-15**

Job Ticket: 52349

**DST#: 2**

ATTN: Tom Dudgeon

Test Start: 2013.08.21 @ 13:49:25

## Mud and Cushion Information

Mud Type: Gel Chem

Cushion Type:

Oil API:

deg API

Mud Weight: 9.00 lb/gal

Cushion Length:

ft

Water Salinity:

6600 ppm

Viscosity: 57.00 sec/qt

Cushion Volume:

bbbl

Water Loss: 9.19 in<sup>3</sup>

Gas Cushion Type:

Resistivity: 0.00 ohm.m

Gas Cushion Pressure:

psig

Salinity: 6600.00 ppm

Filter Cake: 0.02 inches

## Recovery Information

Recovery Table

| Length<br>ft | Description                      | Volume<br>bbl |
|--------------|----------------------------------|---------------|
| 10.00        | VSLI O&WCM 1%oil, 2%w tr, 97%mud | 0.049         |
| 0.00         | 60' GIP                          | 0.000         |

Total Length: 10.00 ft      Total Volume: 0.049 bbl

Num Fluid Samples: 0

Num Gas Bombs: 0

Serial #: none

Laboratory Name:

Laboratory Location:

Recovery Comments:

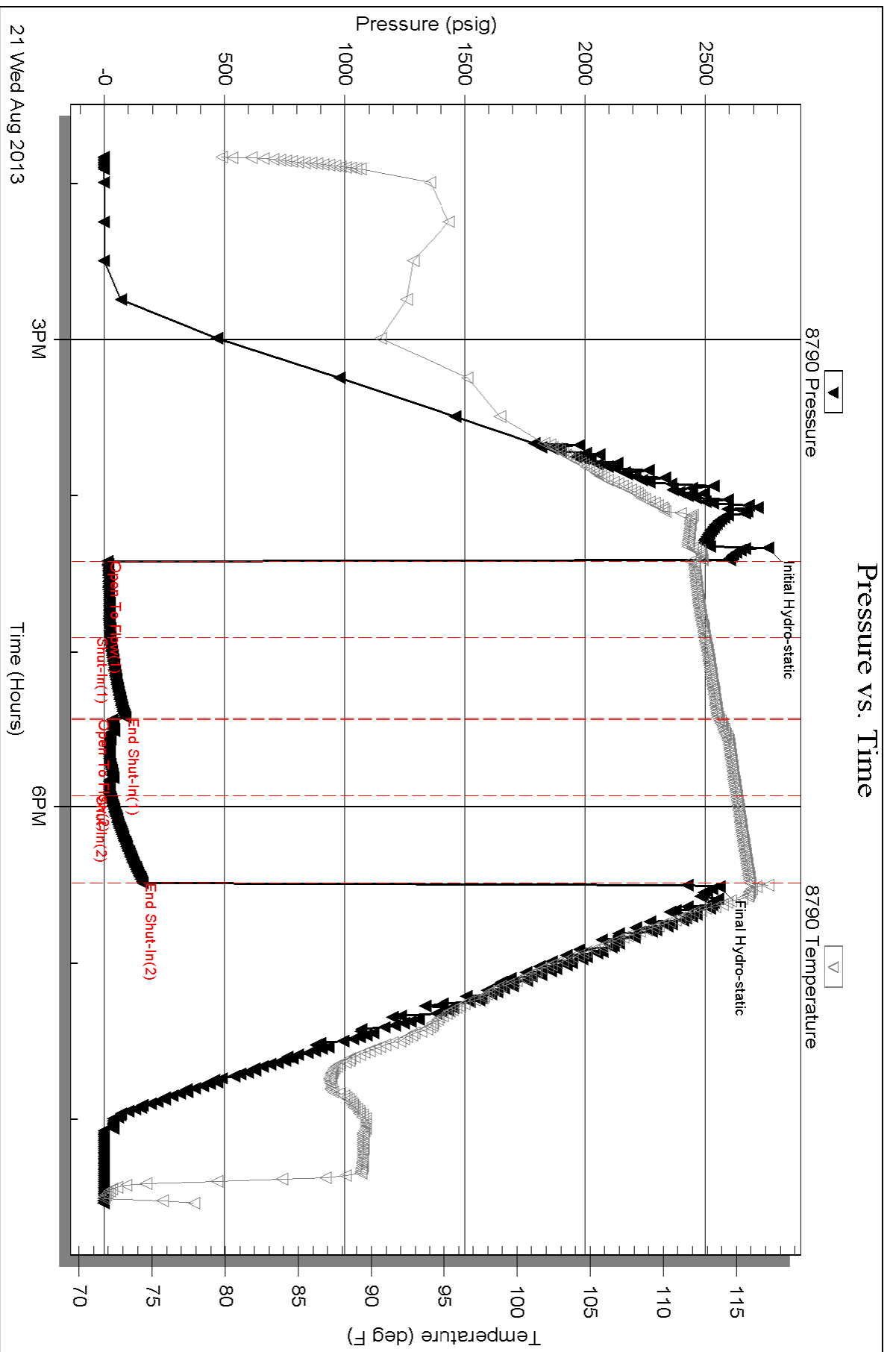
Serial #: 8790

Inside

Vincent Oil Corp

Ellis #3-15

DST Test Number: 2



Triobite Testing, Inc

Ref. No: 52349

Printed: 2013.08.22 @ 07:58:11