



DRILL STEM TEST REPORT

Prepared For: **H&C Oil Operating Inc**

PO Box 86
Plainville KS 67663

ATTN: Marc Downing

13-10-26 Sheridan,KS

Delbert Walt Trust #13-2

Start Date: 2013.10.06 @ 07:09:05

End Date: 2013.10.06 @ 10:55:00

Job Ticket #: 54469 DST #: 1

Trilobite Testing, Inc
PO Box 362 Hays, KS 67601
ph: 785-625-4778 fax: 785-625-5620

Printed: 2013.10.10 @ 16:00:53

H&C Oil Operating Inc

Delbert Walt Trust #13-2

13-10-26 Sheridan,KS

DST # 1

LKC "A"

2013.10.06



**TRILOBITE
TESTING, INC.**

DRILL STEM TEST REPORT

TOOL DIAGRAM

H&C Oil Operating Inc

Delbert Walt Trust #13-2

PO Box 86
Plainville KS 67663

13-10-26 Sheridan,KS

ATTN: Marc Downing

Job Ticket: 54469

DST#: 1

Test Start: 2013.10.06 @ 07:09:05

Tool Information

Drill Pipe:	Length: 3777.00 ft	Diameter: 3.80 inches	Volume: 52.98 bbl	Tool Weight: 2000.00 lb
Heavy Wt. Pipe:	Length: 0.00 ft	Diameter: 0.00 inches	Volume: 0.00 bbl	Weight set on Packer: 30000.00 lb
Drill Collar:	Length: 0.00 ft	Diameter: 0.00 inches	Volume: 0.00 bbl	Weight to Pull Loose: lb
			<u>Total Volume: 52.98 bbl</u>	Tool Chased: ft
Drill Pipe Above KB:	22.00 ft			String Weight: Initial lb
Depth to Top Packer:	3776.00 ft			Final lb
Depth to Bottom Packer:	ft			
Interval between Packers:	60.00 ft			
Tool Length:	81.00 ft			
Number of Packers:	2	Diameter:	6.75 inches	

Tool Comments: Miss Run, Half way to bottom and hit a bridge.

Tool Description	Length (ft)	Serial No.	Position	Depth (ft)	Accum. Lengths
Change Over Sub	1.00			3756.00	
Shut In Tool	5.00			3761.00	
Hydraulic tool	5.00			3766.00	
Packer	5.00			3771.00	21.00 Bottom Of Top Packer
Packer	5.00			3776.00	
Stubb	1.00			3777.00	
Perforations	5.00			3782.00	
Change Over Sub	1.00			3783.00	
Drill Pipe	31.00			3814.00	
Change Over Sub	1.00			3815.00	
Recorder	0.00	6799	Inside	3815.00	
Recorder	0.00	8648	Outside	3815.00	
Perforations	18.00			3833.00	
Bullnose	3.00			3836.00	60.00 Bottom Packers & Anchor

Total Tool Length: 81.00



**TRILOBITE
TESTING, INC.**

DRILL STEM TEST REPORT

FLUID SUMMARY

H&C Oil Operating Inc

Delbert Walt Trust #13-2

PO Box 86
Plainville KS 67663

13-10-26 Sheridan,KS

Job Ticket: 54469

DST#: 1

ATTN: Marc Downing

Test Start: 2013.10.06 @ 07:09:05

Mud and Cushion Information

Mud Type: Gel Chem

Cushion Type:

Oil API:

deg API

Mud Weight: 9.00 lb/gal

Cushion Length:

ft

Water Salinity:

ppm

Viscosity: sec/qt

Cushion Volume:

bbbl

Water Loss: 5.98 in³

Gas Cushion Type:

Resistivity: ohm.m

Gas Cushion Pressure:

psig

Salinity: 1000.00 ppm

Filter Cake: inches

Recovery Information

Recovery Table

Length ft	Description	Volume bbbl

Total Length: ft Total Volume: bbl

Num Fluid Samples: 0 Num Gas Bombs: 0 Serial #:

Laboratory Name: Laboratory Location:

Recovery Comments:

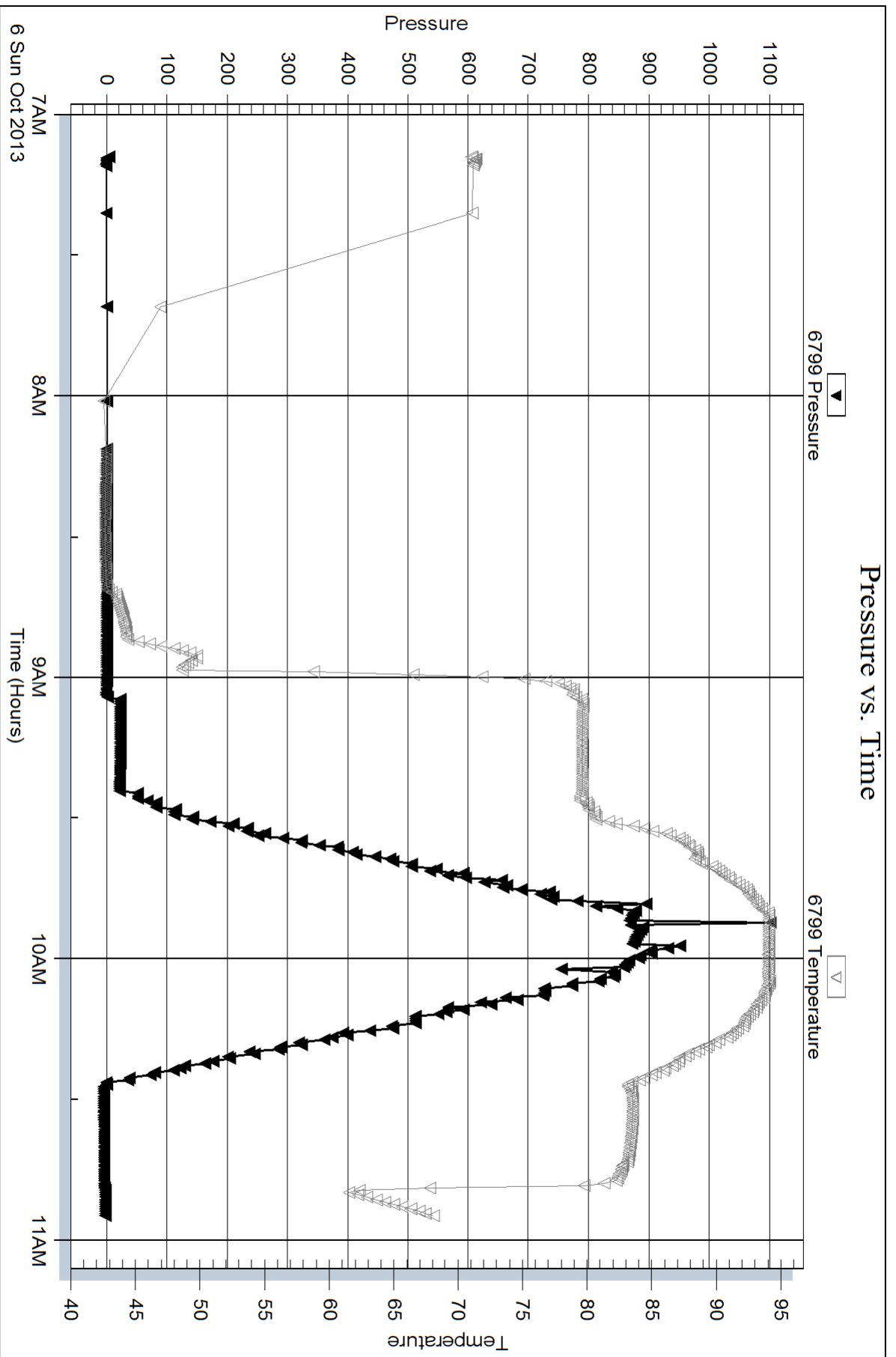
Serial #: 6799

Inside

H&C Oil Operating Inc

13-10-26 Sheridan, KS

DST Test Number: 1

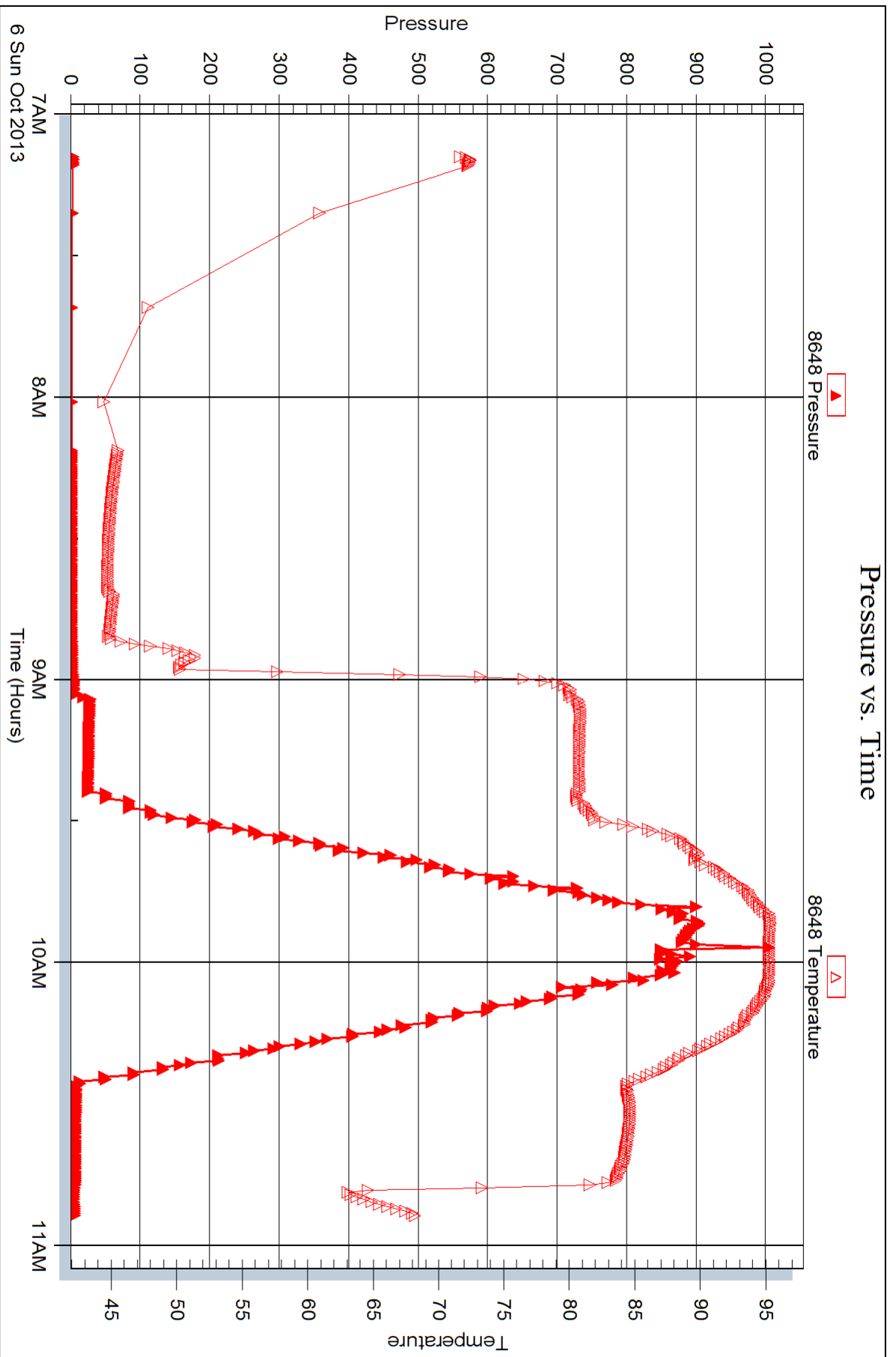


Serial #: 8648

Outside H&C Oil Operating Inc

13-10-26 Sheridan, KS

DST Test Number: 1





DRILL STEM TEST REPORT

Prepared For: **H&C Oil Operating Inc**

PO Box 86
Plainville KS 67663

ATTN: Marc Downing

13-10-26 Sheridan,KS

Delbert Walt Trust #13-2

Start Date: 2013.10.06 @ 17:14:00

End Date: 2013.10.06 @ 22:21:15

Job Ticket #: 54470 DST #: 2

Trilobite Testing, Inc

PO Box 362 Hays, KS 67601

ph: 785-625-4778 fax: 785-625-5620

Printed: 2013.10.10 @ 16:00:26

H&C Oil Operating Inc

Delbert Walt Trust #13-2

13-10-26 Sheridan,KS

DST # 2

LKC "A"

2013.10.06



TRILOBITE TESTING, INC.

DRILL STEM TEST REPORT

H&C Oil Operating Inc

PO Box 86
Plainville KS 67663

ATTN: Marc Downing

Delbert Walt Trust #13-2

13-10-26 Sheridan,KS

Job Ticket: 54470

DST#: 2

Test Start: 2013.10.06 @ 17:14:00

GENERAL INFORMATION:

Formation: **LKC "A"**

Deviated: No Whipstock: ft (KB)

Time Tool Opened: 18:36:30

Time Test Ended: 22:21:15

Test Type: Conventional Bottom Hole (Reset)

Tester: Cody Bloedorn

Unit No: 53

Interval: 3776.00 ft (KB) To 3836.00 ft (KB) (TVD)

Reference Elevations: 2562.00 ft (KB)

Total Depth: 3836.00 ft (KB) (TVD)

2556.00 ft (CF)

Hole Diameter: 7.88 inches Hole Condition: Fair

KB to GR/CF: 6.00 ft

Serial #: 6799 Inside

Press @ Run Depth: 26.55 psig @ 3815.00 ft (KB)

Capacity: 8000.00 psig

Start Date: 2013.10.06

End Date:

2013.10.06

Last Calib.: 2013.10.06

Start Time: 17:14:05

End Time:

22:21:14

Time On Btm: 2013.10.06 @ 18:36:15

Time Off Btm: 2013.10.06 @ 20:39:00

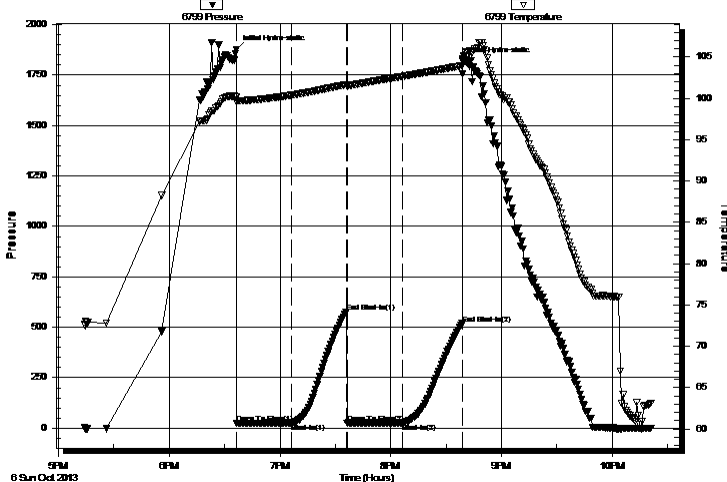
TEST COMMENT: 30 - IF- 1/4" blow and died off to surface blow

30 - IS- No return

30 - FF- No blow

30 - FS- No return

Pressure vs. Time



PRESSURE SUMMARY

Time (Min.)	Pressure (psig)	Temp (deg F)	Annotation
0	1876.90	100.15	Initial Hydro-static
1	23.60	99.59	Open To Flow (1)
30	25.12	100.39	Shut-In(1)
60	576.89	101.67	End Shut-In(1)
60	25.30	101.49	Open To Flow (2)
90	26.55	102.67	Shut-In(2)
123	518.11	103.96	End Shut-In(2)
123	1819.19	104.63	Final Hydro-static

Recovery

Length (ft)	Description	Volume (bbl)
6.00	SOCM, 5%O, 95%M	0.08
1.00	Free oil, 100%O	0.01

Gas Rates

Choke (inches)	Pressure (psig)	Gas Rate (Mcf/d)

* Recovery from multiple tests



**TRILOBITE
TESTING, INC.**

DRILL STEM TEST REPORT

TOOL DIAGRAM

H&C Oil Operating Inc

Delbert Walt Trust #13-2

PO Box 86
Plainville KS 67663

13-10-26 Sheridan,KS

Job Ticket: 54470

DST#: 2

ATTN: Marc Downing

Test Start: 2013.10.06 @ 17:14:00

Tool Information

Drill Pipe:	Length: 3777.00 ft	Diameter: 3.80 inches	Volume: 52.98 bbl	Tool Weight: 2000.00 lb
Heavy Wt. Pipe:	Length: 0.00 ft	Diameter: 0.00 inches	Volume: 0.00 bbl	Weight set on Packer: 30000.00 lb
Drill Collar:	Length: 0.00 ft	Diameter: 0.00 inches	Volume: 0.00 bbl	Weight to Pull Loose: 66000.00 lb
			<u>Total Volume: 52.98 bbl</u>	Tool Chased 0.00 ft
Drill Pipe Above KB:	22.00 ft			String Weight: Initial 62000.00 lb
Depth to Top Packer:	3776.00 ft			Final 62000.00 lb
Depth to Bottom Packer:	ft			
Interval between Packers:	60.00 ft			
Tool Length:	81.00 ft			
Number of Packers:	2	Diameter: 6.75 inches		

Tool Comments:

Tool Description	Length (ft)	Serial No.	Position	Depth (ft)	Accum. Lengths
------------------	-------------	------------	----------	------------	----------------

Change Over Sub	1.00			3756.00	
Shut In Tool	5.00			3761.00	
Hydraulic tool	5.00			3766.00	
Packer	5.00			3771.00	21.00 Bottom Of Top Packer
Packer	5.00			3776.00	
Stubb	1.00			3777.00	
Perforations	5.00			3782.00	
Change Over Sub	1.00			3783.00	
Drill Pipe	31.00			3814.00	
Change Over Sub	1.00			3815.00	
Recorder	0.00	6799	Inside	3815.00	
Recorder	0.00	8648	Outside	3815.00	
Perforations	18.00			3833.00	
Bullnose	3.00			3836.00	60.00 Bottom Packers & Anchor

Total Tool Length: 81.00



**TRILOBITE
TESTING, INC.**

DRILL STEM TEST REPORT

FLUID SUMMARY

H&C Oil Operating Inc

Delbert Walt Trust #13-2

PO Box 86
Plainville KS 67663

13-10-26 Sheridan,KS

Job Ticket: 54470 **DST#: 2**

ATTN: Marc Downing

Test Start: 2013.10.06 @ 17:14:00

Mud and Cushion Information

Mud Type: Gel Chem	Cushion Type:	Oil API:	deg API
Mud Weight: 9.00 lb/gal	Cushion Length: ft	Water Salinity:	ppm
Viscosity: 60.00 sec/qt	Cushion Volume: bbl		
Water Loss: 5.97 in ³	Gas Cushion Type:		
Resistivity: ohm.m	Gas Cushion Pressure: psig		
Salinity: 1000.00 ppm			
Filter Cake: inches			

Recovery Information

Recovery Table

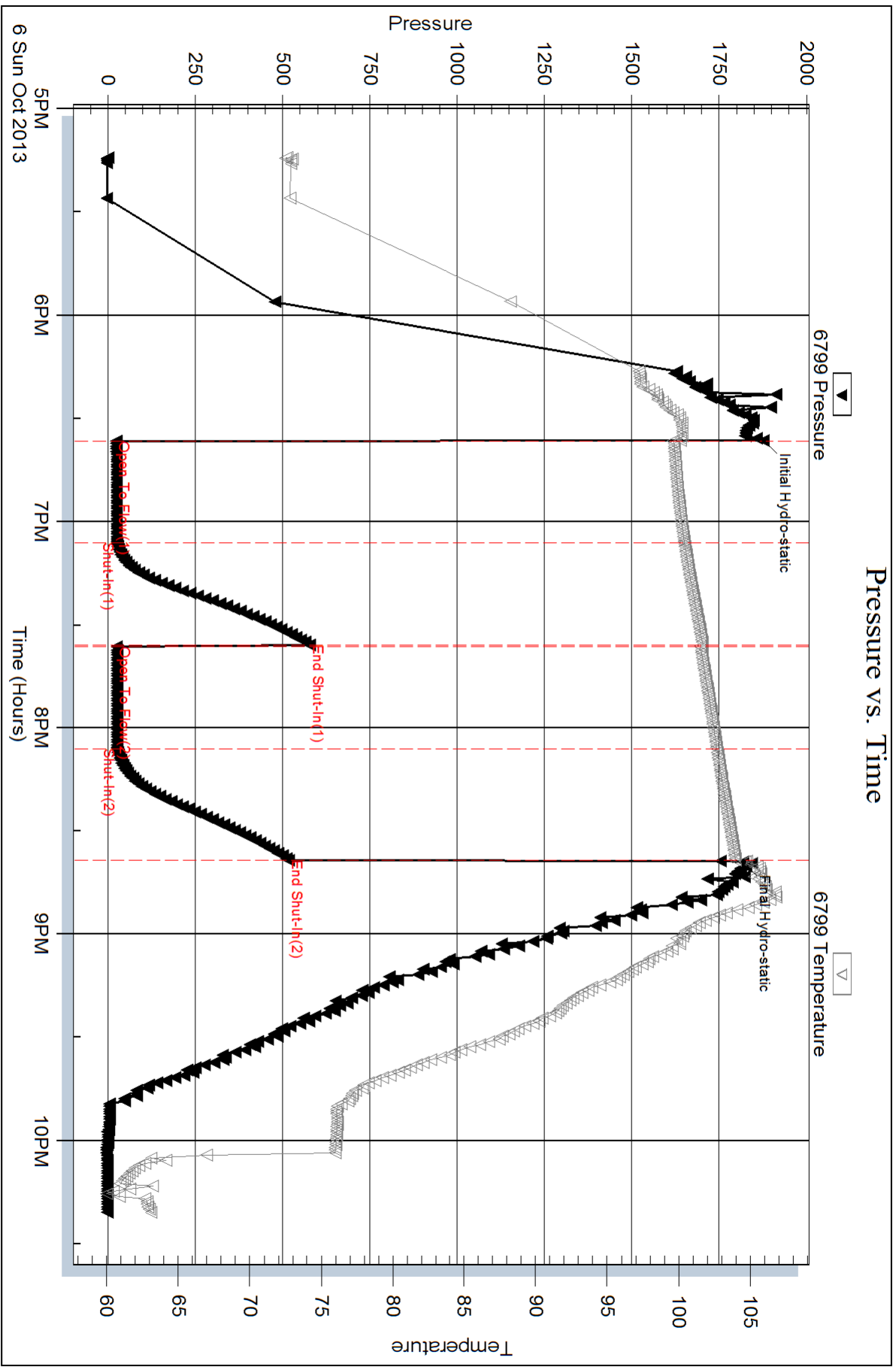
Length ft	Description	Volume bbl
6.00	SOCM, 5%O, 95%M	0.084
1.00	Free oil, 100%O	0.014

Total Length: 7.00 ft Total Volume: 0.098 bbl

Num Fluid Samples: 0 Num Gas Bombs: 0 Serial #:

Laboratory Name: Laboratory Location:

Recovery Comments:

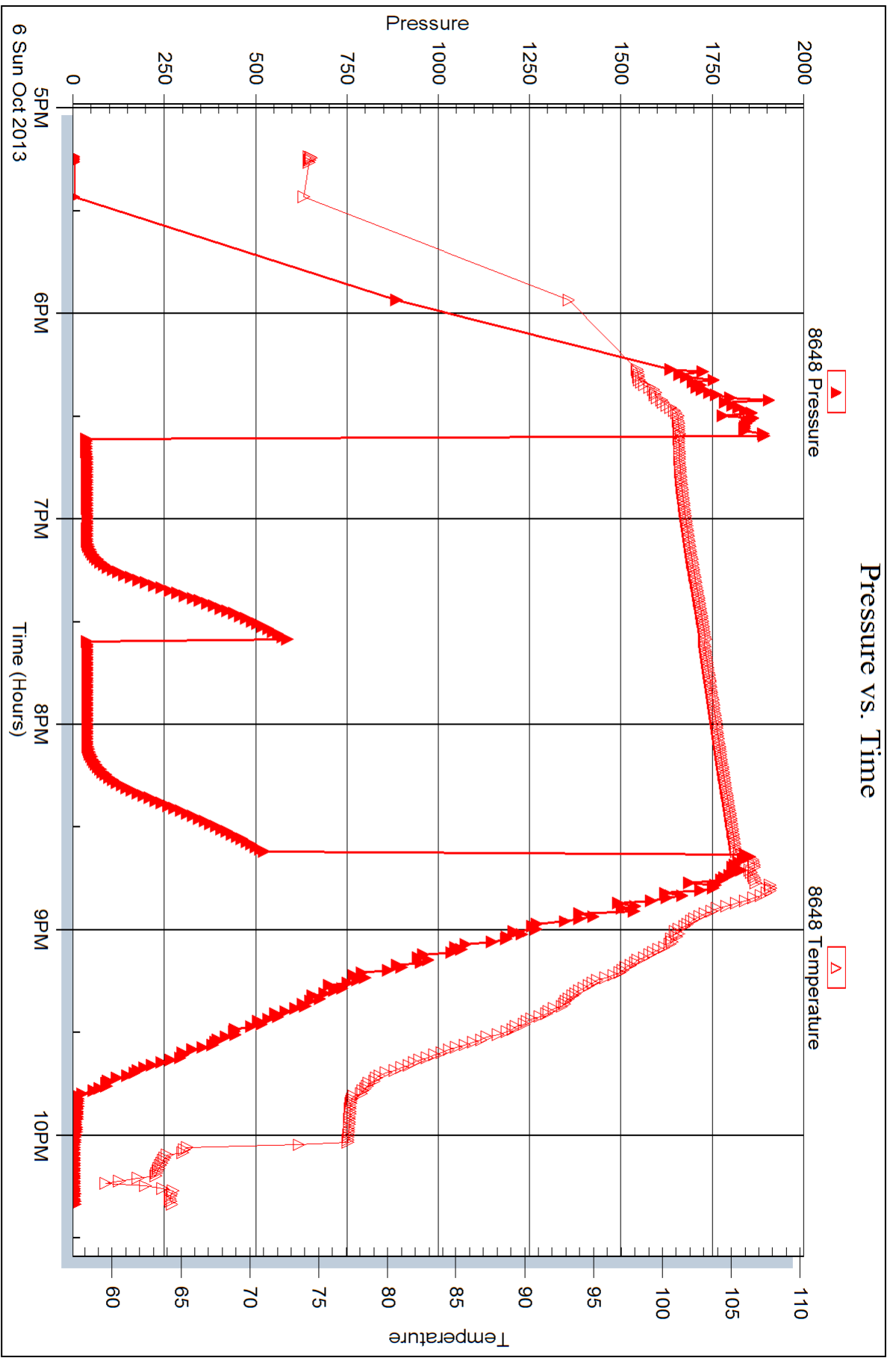


Serial #: 8648

Outside H&C Oil Operating Inc

13-10-26 Sheridan, KS

DST Test Number: 2





DRILL STEM TEST REPORT

Prepared For: **H&C Oil Operating Inc**

PO Box 86
Plainville KS 67663

ATTN: Marc Downing

13-10-26 Sheridan,KS

Delbert Walt Trust #13-2

Start Date: 2013.10.07 @ 06:24:00

End Date: 2013.10.07 @ 13:45:00

Job Ticket #: 54471 DST #: 3

Trilobite Testing, Inc
PO Box 362 Hays, KS 67601
ph: 785-625-4778 fax: 785-625-5620

Printed: 2013.10.10 @ 15:59:52

H&C Oil Operating Inc

Delbert Walt Trust #13-2

13-10-26 Sheridan,KS

DST # 3

LKC "C-D"

2013.10.07



**TRILOBITE
TESTING, INC.**

DRILL STEM TEST REPORT

H&C Oil Operating Inc

PO Box 86
Plainville KS 67663

ATTN: Marc Downing

Delbert Walt Trust #13-2

13-10-26 Sheridan,KS

Job Ticket: 54471

DST#: 3

Test Start: 2013.10.07 @ 06:24:00

GENERAL INFORMATION:

Formation: **LKC "C-D"**

Deviated: No Whipstock: ft (KB)

Time Tool Opened: 08:44:30

Time Test Ended: 13:45:00

Test Type: Conventional Bottom Hole (Reset)

Tester: Cody Bloedorn

Unit No: 53

Interval: 3831.00 ft (KB) To 3880.00 ft (KB) (TVD)

Reference Elevations: 2562.00 ft (KB)

Total Depth: 3880.00 ft (KB) (TVD)

2556.00 ft (CF)

Hole Diameter: 7.88 inches Hole Condition: Fair

KB to GR/CF: 6.00 ft

Serial #: 6799

Inside

Press @ Run Depth: 105.52 psig @ 3870.00 ft (KB)

Capacity: 8000.00 psig

Start Date: 2013.10.07

End Date:

2013.10.07

Last Calib.: 2013.10.07

Start Time: 06:24:05

End Time:

13:44:59

Time On Btm: 2013.10.07 @ 08:44:15

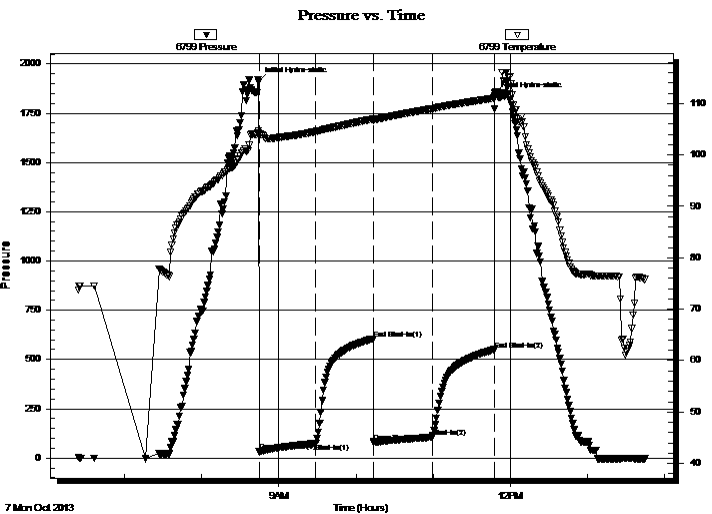
Time Off Btm: 2013.10.07 @ 11:48:00

TEST COMMENT: 45 - IF- B.O.B. in 10 minutes

45 - IS- Surface return

45 - FF-6.5" blow

45 - FS- Surface return



PRESSURE SUMMARY

Time (Min.)	Pressure (psig)	Temp (deg F)	Annotation
0	1908.81	104.76	Initial Hydro-static
1	31.99	104.16	Open To Flow (1)
45	74.61	104.54	Shut-In(1)
89	604.72	107.01	End Shut-In(1)
90	79.08	106.89	Open To Flow (2)
135	105.52	109.01	Shut-In(2)
184	549.37	111.04	End Shut-In(2)
184	1834.07	111.48	Final Hydro-static

Recovery

Length (ft)	Description	Volume (bbl)
62.00	MW, 40%M, 60%W	0.87
114.00	OCM, 20%O, 80%M	1.60
10.00	Free Oil, 100%O	0.14

* Recovery from multiple tests

Gas Rates

	Choke (inches)	Pressure (psig)	Gas Rate (Mcf/d)



TRILOBITE TESTING, INC.

DRILL STEM TEST REPORT

H&C Oil Operating Inc

PO Box 86
Plainville KS 67663

ATTN: Marc Downing

Delbert Walt Trust #13-2

13-10-26 Sheridan,KS

Job Ticket: 54471

DST#: 3

Test Start: 2013.10.07 @ 06:24:00

GENERAL INFORMATION:

Formation: **LKC "C-D"**

Deviated: No Whipstock: ft (KB)

Time Tool Opened: 08:44:30

Time Test Ended: 13:45:00

Test Type: Conventional Bottom Hole (Reset)

Tester: Cody Bloedorn

Unit No: 53

Interval: 3831.00 ft (KB) To 3880.00 ft (KB) (TVD)

Reference Elevations: 2562.00 ft (KB)

Total Depth: 3880.00 ft (KB) (TVD)

2556.00 ft (CF)

Hole Diameter: 7.88 inches Hole Condition: Fair

KB to GR/CF: 6.00 ft

Serial #: 8648 Outside

Press @RunDepth: psig @ 3870.00 ft (KB)

Capacity: 8000.00 psig

Start Date: 2013.10.07 End Date: 2013.10.07

Last Calib.: 2013.10.07

Start Time: 06:24:05 End Time: 13:43:14

Time On Btm:

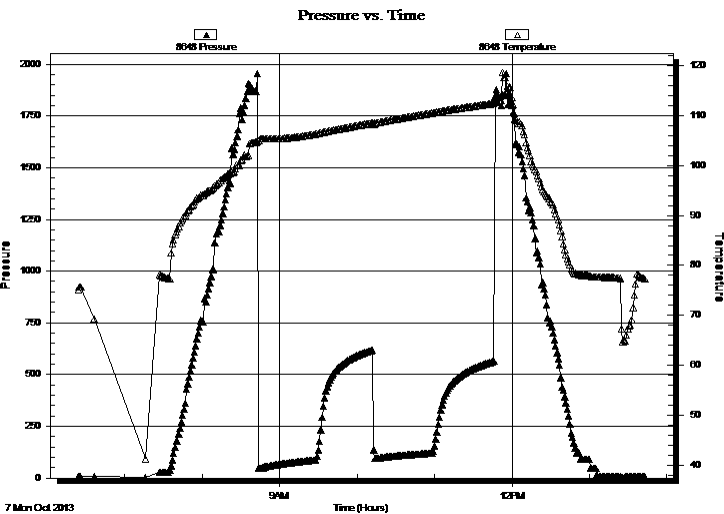
Time Off Btm:

TEST COMMENT: 45 - IF- B.O.B. in 10 minutes

45 - IS- Surface return

45 - FF-6.5" blow

45 - FS- Surface return



PRESSURE SUMMARY

Time (Min.)	Pressure (psig)	Temp (deg F)	Annotation

Recovery

Length (ft)	Description	Volume (bbl)
62.00	MW, 40%M, 60%W	0.87
114.00	OCM, 20%O, 80%M	1.60
10.00	Free Oil, 100%O	0.14

Gas Rates

Choke (inches)	Pressure (psig)	Gas Rate (Mcf/d)

* Recovery from multiple tests



**TRILOBITE
TESTING, INC.**

DRILL STEM TEST REPORT

TOOL DIAGRAM

H&C Oil Operating Inc

Delbert Walt Trust #13-2

PO Box 86
Plainville KS 67663

13-10-26 Sheridan,KS

ATTN: Marc Downing

Job Ticket: 54471

DST#: 3

Test Start: 2013.10.07 @ 06:24:00

Tool Information

Drill Pipe:	Length: 3838.00 ft	Diameter: 3.80 inches	Volume: 53.84 bbl	Tool Weight: 2000.00 lb
Heavy Wt. Pipe:	Length: 0.00 ft	Diameter: 0.00 inches	Volume: 0.00 bbl	Weight set on Packer: 30000.00 lb
Drill Collar:	Length: 0.00 ft	Diameter: 0.00 inches	Volume: 0.00 bbl	Weight to Pull Loose: 70000.00 lb
			<u>Total Volume: 53.84 bbl</u>	Tool Chased 0.00 ft
Drill Pipe Above KB:	28.00 ft			String Weight: Initial 63000.00 lb
Depth to Top Packer:	3831.00 ft			Final 65000.00 lb
Depth to Bottom Packer:	ft			
Interval between Packers:	49.00 ft			
Tool Length:	70.00 ft			
Number of Packers:	2	Diameter: 6.75 inches		

Tool Comments:

Tool Description	Length (ft)	Serial No.	Position	Depth (ft)	Accum. Lengths
------------------	-------------	------------	----------	------------	----------------

Change Over Sub	1.00			3811.00	
Shut In Tool	5.00			3816.00	
Hydraulic tool	5.00			3821.00	
Packer	5.00			3826.00	21.00 Bottom Of Top Packer
Packer	5.00			3831.00	
Stubb	1.00			3832.00	
Perforations	5.00			3837.00	
Change Over Sub	1.00			3838.00	
Drill Pipe	31.00			3869.00	
Change Over Sub	1.00			3870.00	
Recorder	0.00	6799	Inside	3870.00	
Recorder	0.00	8648	Outside	3870.00	
Perforations	7.00			3877.00	
Bullnose	3.00			3880.00	49.00 Bottom Packers & Anchor

Total Tool Length: 70.00



**TRILOBITE
TESTING, INC.**

DRILL STEM TEST REPORT

FLUID SUMMARY

H&C Oil Operating Inc

Delbert Walt Trust #13-2

PO Box 86
Plainville KS 67663

13-10-26 Sheridan,KS

Job Ticket: 54471

DST#: 3

ATTN: Marc Downing

Test Start: 2013.10.07 @ 06:24:00

Mud and Cushion Information

Mud Type: Gel Chem

Cushion Type:

Oil API:

deg API

Mud Weight: 9.00 lb/gal

Cushion Length:

ft

Water Salinity:

ppm

Viscosity: 63.00 sec/qt

Cushion Volume:

bbbl

Water Loss: 5.78 in³

Gas Cushion Type:

Resistivity: ohm.m

Gas Cushion Pressure:

psig

Salinity: 1100.00 ppm

Filter Cake: inches

Recovery Information

Recovery Table

Length ft	Description	Volume bbl
62.00	MW, 40%M, 60%W	0.870
114.00	OCM, 20%O, 80%M	1.599
10.00	Free Oil, 100%O	0.140

Total Length: 186.00 ft Total Volume: 2.609 bbl

Num Fluid Samples: 0

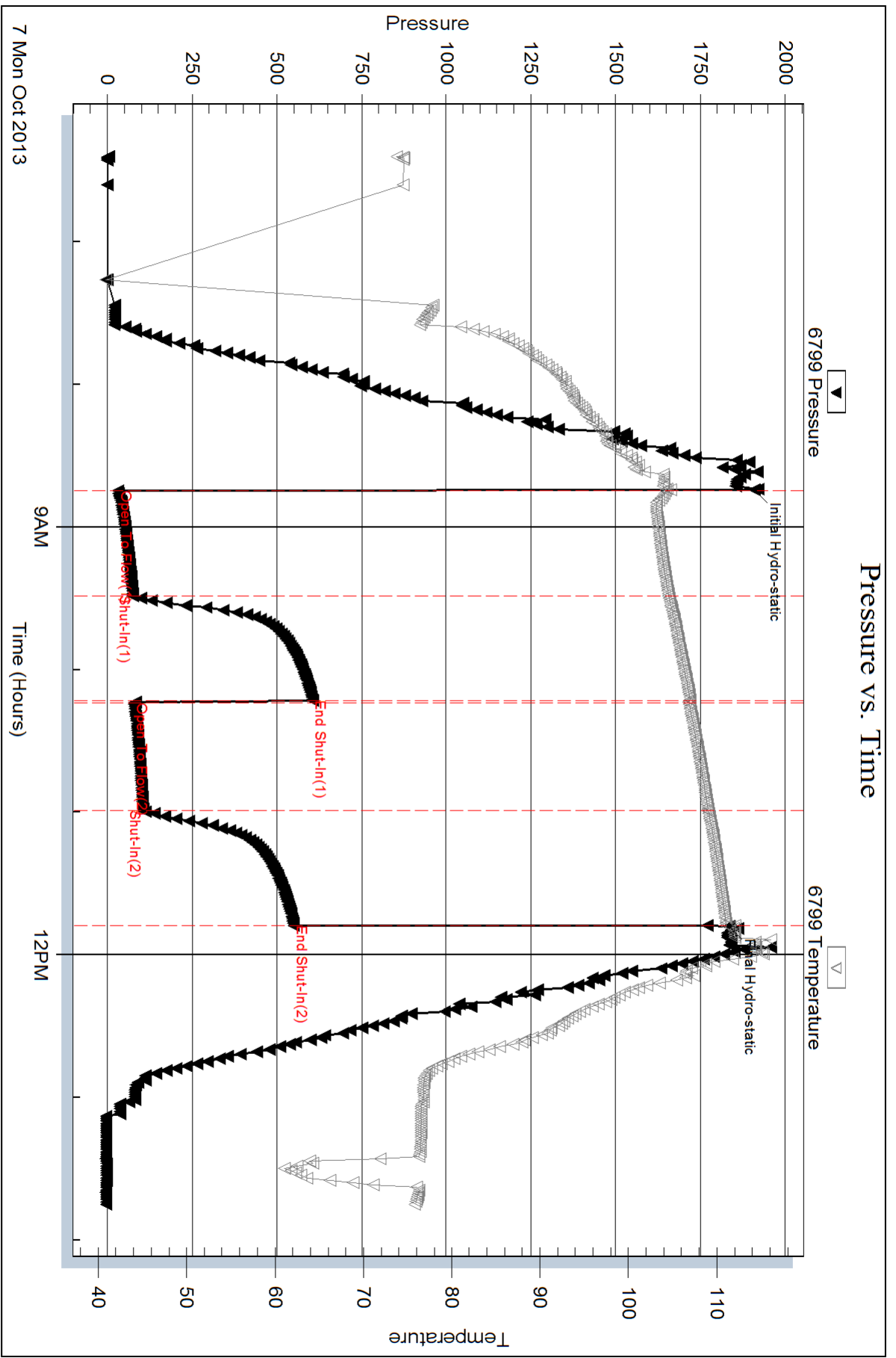
Num Gas Bombs: 0

Serial #:

Laboratory Name:

Laboratory Location:

Recovery Comments:

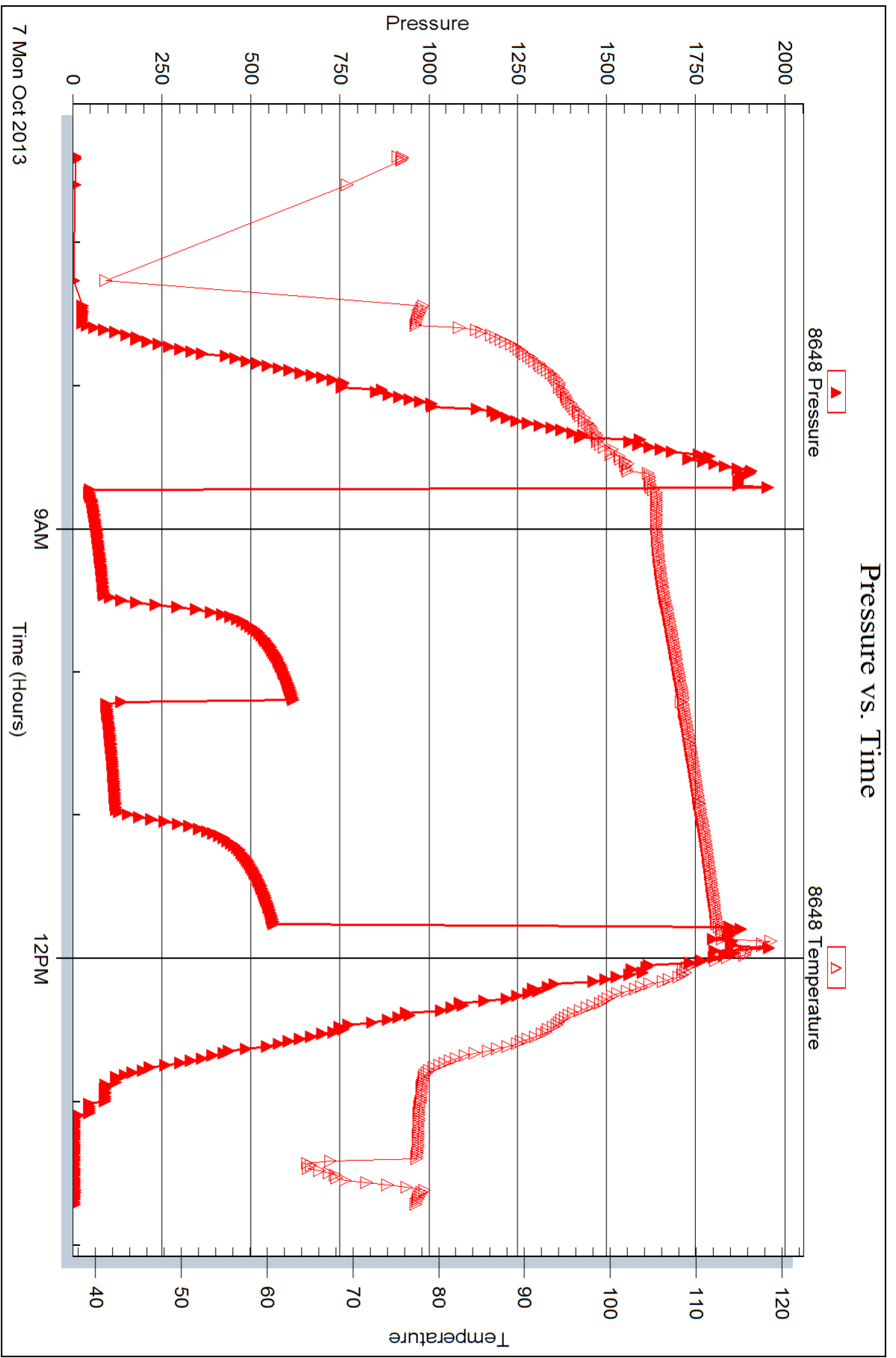


Serial #: 8648

Outside H&C Oil Operating Inc

13-10-26 Sheridan, KS

DST Test Number: 3





DRILL STEM TEST REPORT

Prepared For: **H&C Oil Operating Inc**

PO Box 86
Plainville KS 67663

ATTN: Marc Downing

13-10-26 Sheridan,KS

Delbert Walt Trust #13-2

Start Date: 2013.10.07 @ 21:23:00

End Date: 2013.10.08 @ 03:28:00

Job Ticket #: 54472 DST #: 4

Trilobite Testing, Inc
PO Box 362 Hays, KS 67601
ph: 785-625-4778 fax: 785-625-5620

Printed: 2013.10.10 @ 15:59:21

H&C Oil Operating Inc

Delbert Walt Trust #13-2

13-10-26 Sheridan,KS

DST # 4

LKC "E-F"

2013.10.07



TRILOBITE TESTING, INC.

DRILL STEM TEST REPORT

H&C Oil Operating Inc

PO Box 86
Plainville KS 67663

ATTN: Marc Downing

Delbert Walt Trust #13-2

13-10-26 Sheridan,KS

Job Ticket: 54472

DST#: 4

Test Start: 2013.10.07 @ 21:23:00

GENERAL INFORMATION:

Formation: **LKC "E-F"**

Deviated: No Whipstock: ft (KB)

Time Tool Opened: 22:47:00

Time Test Ended: 03:28:00

Test Type: Conventional Bottom Hole (Reset)

Tester: Cody Bloedorn

Unit No: 53

Interval: 3879.00 ft (KB) To 3903.00 ft (KB) (TVD)

Reference Elevations: 2562.00 ft (KB)

Total Depth: 3903.00 ft (KB) (TVD)

2556.00 ft (CF)

Hole Diameter: 7.88 inches Hole Condition: Fair

KB to GR/CF: 6.00 ft

Serial #: 6799

Inside

Press @ Run Depth: 84.83 psig @ 3885.00 ft (KB)

Capacity: 8000.00 psig

Start Date: 2013.10.07

End Date:

2013.10.08

Last Calib.: 2013.10.08

Start Time: 21:23:05

End Time:

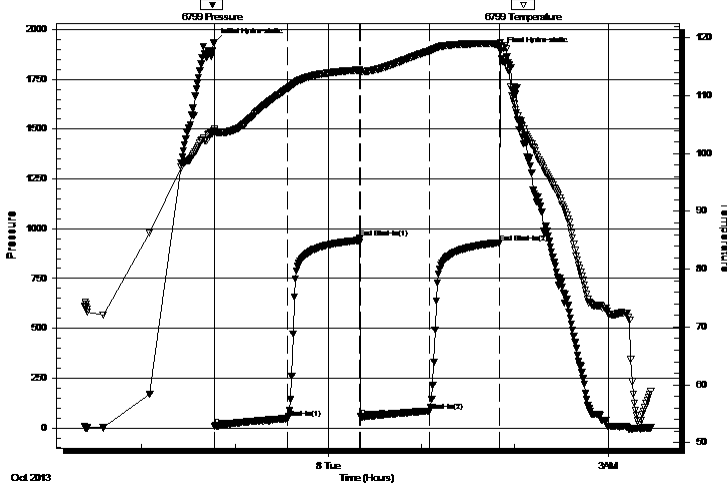
03:27:59

Time On Btm: 2013.10.07 @ 22:46:45

Time Off Btm: 2013.10.08 @ 01:50:45

TEST COMMENT: 45 - IF- 9" blow
45 - IS- No return
45 - FF- 6" blow
45 - FS- Weak surface blow after 10 Min.

Pressure vs. Time



PRESSURE SUMMARY

Time (Min.)	Pressure (psig)	Temp (deg F)	Annotation
0	1934.24	104.18	Initial Hydro-static
1	8.67	103.66	Open To Flow (1)
47	47.61	111.21	Shut-In(1)
94	954.90	114.44	End Shut-In(1)
94	54.96	114.16	Open To Flow (2)
139	84.83	117.71	Shut-In(2)
184	929.40	118.94	End Shut-In(2)
184	1891.62	119.21	Final Hydro-static

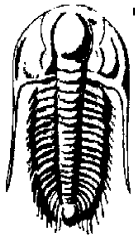
Recovery

Length (ft)	Description	Volume (bbl)
124.00	WM, 50%W, 50%M	1.74
40.00	OCWM, 5%W, 15%O, 80%M	0.56
5.00	Free Oil, 100%O	0.07

* Recovery from multiple tests

Gas Rates

	Choke (inches)	Pressure (psig)	Gas Rate (Mcf/d)



TRILOBITE TESTING, INC.

DRILL STEM TEST REPORT

H&C Oil Operating Inc

Delbert Walt Trust #13-2

PO Box 86
Plainville KS 67663

13-10-26 Sheridan, KS

ATTN: Marc Downing

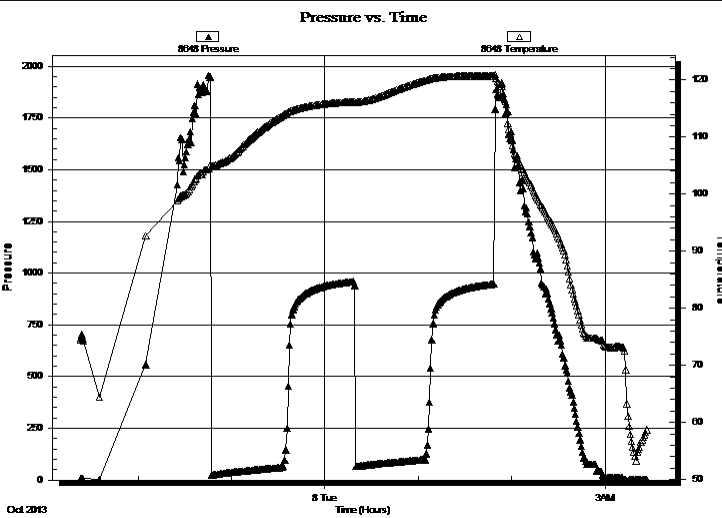
Job Ticket: 54472 **DST#: 4**
Test Start: 2013.10.07 @ 21:23:00

GENERAL INFORMATION:

Formation: **LKC "E-F"**
Deviated: No Whipstock: ft (KB) Test Type: Conventional Bottom Hole (Reset)
Time Tool Opened: 22:47:00 Tester: Cody Bloedorn
Time Test Ended: 03:28:00 Unit No: 53
Interval: 3879.00 ft (KB) To 3903.00 ft (KB) (TVD) Reference Elevations: 2562.00 ft (KB)
Total Depth: 3903.00 ft (KB) (TVD) 2556.00 ft (CF)
Hole Diameter: 7.88 inches Hole Condition: Fair KB to GR/CF: 6.00 ft

Serial #: 8648 **Outside**
Press @ Run Depth: psig @ 3885.00 ft (KB) Capacity: 8000.00 psig
Start Date: 2013.10.07 End Date: 2013.10.08 Last Calib.: 2013.10.08
Start Time: 21:23:05 End Time: 03:26:44 Time On Btm:
Time Off Btm:

TEST COMMENT: 45 - IF- 9" blow
45 - IS- No return
45 - FF- 6" blow
45 - FS- Weak surface blow after 10 Min.



Time (Min.)	Pressure (psig)	Temp (deg F)	Annotation

Length (ft)	Description	Volume (bbl)
124.00	WM, 50%W, 50%M	1.74
40.00	OCWM, 5%W, 15%O, 80%M	0.56
5.00	Free Oil, 100%O	0.07

	Choke (inches)	Pressure (psig)	Gas Rate (Mcf/d)

* Recovery from multiple tests



**TRILOBITE
TESTING, INC.**

DRILL STEM TEST REPORT

TOOL DIAGRAM

H&C Oil Operating Inc

Delbert Walt Trust #13-2

PO Box 86
Plainville KS 67663

13-10-26 Sheridan,KS

ATTN: Marc Downing

Job Ticket: 54472

DST#: 4

Test Start: 2013.10.07 @ 21:23:00

Tool Information

Drill Pipe:	Length: 3869.00 ft	Diameter: 3.80 inches	Volume: 54.27 bbl	Tool Weight: 2000.00 lb
Heavy Wt. Pipe:	Length: 0.00 ft	Diameter: 0.00 inches	Volume: 0.00 bbl	Weight set on Packer: 30000.00 lb
Drill Collar:	Length: 0.00 ft	Diameter: 0.00 inches	Volume: 0.00 bbl	Weight to Pull Loose: 68000.00 lb
			<u>Total Volume: 54.27 bbl</u>	Tool Chased 0.00 ft
Drill Pipe Above KB:	11.00 ft			String Weight: Initial 63000.00 lb
Depth to Top Packer:	3879.00 ft			Final 64000.00 lb
Depth to Bottom Packer:	ft			
Interval between Packers:	24.00 ft			
Tool Length:	45.00 ft			
Number of Packers:	2	Diameter: 6.75 inches		

Tool Comments:

Tool Description	Length (ft)	Serial No.	Position	Depth (ft)	Accum. Lengths
------------------	-------------	------------	----------	------------	----------------

Change Over Sub	1.00			3859.00	
Shut In Tool	5.00			3864.00	
Hydraulic tool	5.00			3869.00	
Packer	5.00			3874.00	21.00 Bottom Of Top Packer
Packer	5.00			3879.00	
Stubb	1.00			3880.00	
Perforations	5.00			3885.00	
Recorder	0.00	6799	Inside	3885.00	
Recorder	0.00	8648	Outside	3885.00	
Perforations	15.00			3900.00	
Bullnose	3.00			3903.00	24.00 Bottom Packers & Anchor

Total Tool Length: 45.00



**TRILOBITE
TESTING, INC.**

DRILL STEM TEST REPORT

FLUID SUMMARY

H&C Oil Operating Inc

Delbert Walt Trust #13-2

PO Box 86
Plainville KS 67663

13-10-26 Sheridan,KS

Job Ticket: 54472 **DST#: 4**

ATTN: Marc Downing

Test Start: 2013.10.07 @ 21:23:00

Mud and Cushion Information

Mud Type: Gel Chem	Cushion Type:	Oil API:	deg API
Mud Weight: 9.00 lb/gal	Cushion Length: ft	Water Salinity:	38000 ppm
Viscosity: 63.00 sec/qt	Cushion Volume: bbl		
Water Loss: 5.78 in ³	Gas Cushion Type:		
Resistivity: ohm.m	Gas Cushion Pressure: psig		
Salinity: 1100.00 ppm			
Filter Cake: inches			

Recovery Information

Recovery Table

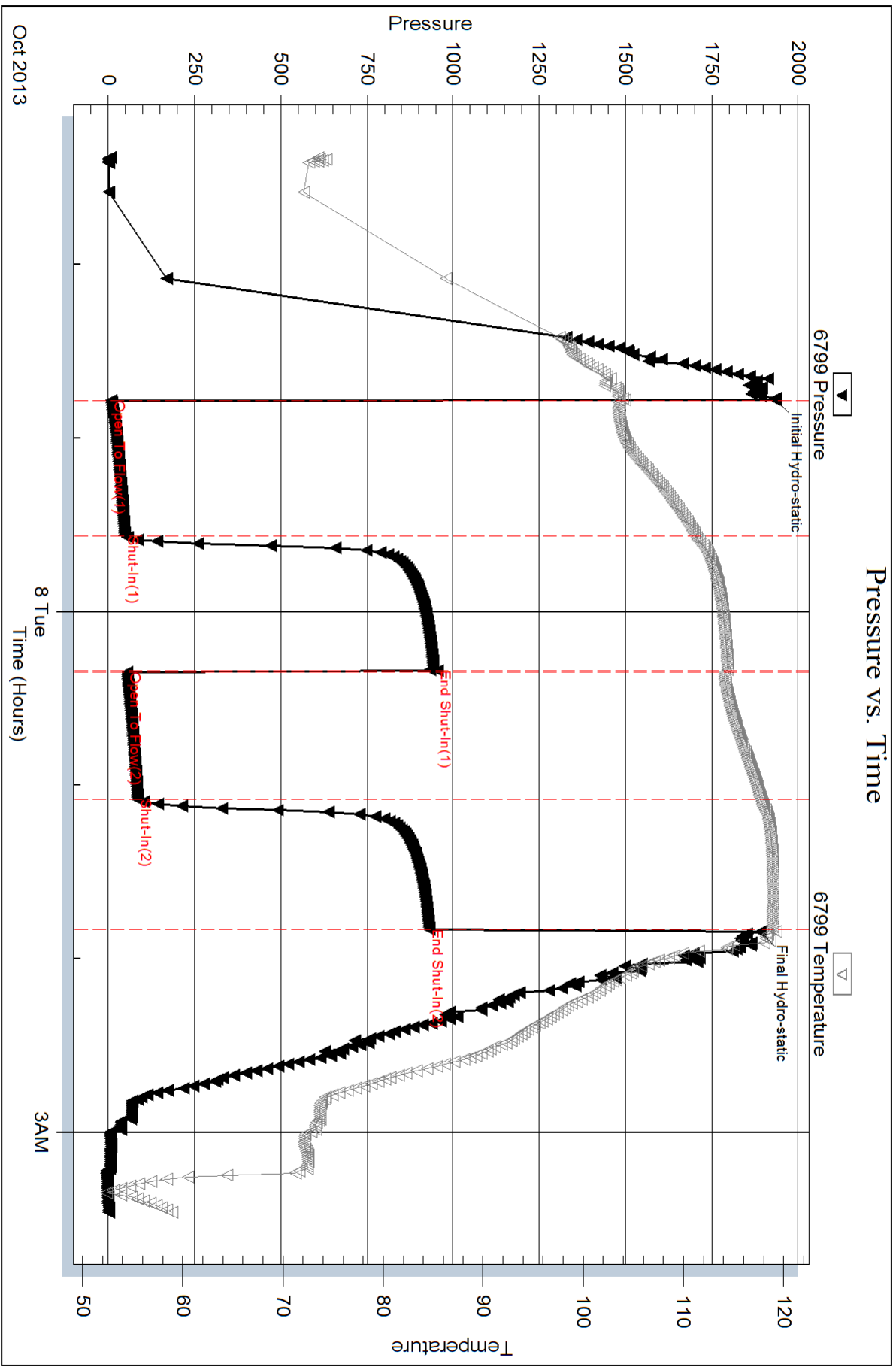
Length ft	Description	Volume bbl
124.00	WM, 50%W, 50%M	1.739
40.00	OCWM, 5%W, 15%O, 80%M	0.561
5.00	Free Oil, 100%O	0.070

Total Length: 169.00 ft Total Volume: 2.370 bbl

Num Fluid Samples: 0 Num Gas Bombs: 0 Serial #:

Laboratory Name: Laboratory Location:

Recovery Comments: .38 @ 60 degrees = 38000







DRILL STEM TEST REPORT

Prepared For: **H&C Oil Operating Inc**

PO Box 86
Plainville KS 67663

ATTN: Marc Downing

13-10-26 Sheridan,KS

Delbert Walt Trust #13-2

Start Date: 2013.10.08 @ 14:47:00

End Date: 2013.10.08 @ 21:23:45

Job Ticket #: 54473 DST #: 5

Trilobite Testing, Inc

PO Box 362 Hays, KS 67601

ph: 785-625-4778 fax: 785-625-5620

Printed: 2013.10.10 @ 15:58:53

H&C Oil Operating Inc

Delbert Walt Trust #13-2

13-10-26 Sheridan,KS

DST # 5

LKC "H"

2013.10.08



**TRILOBITE
TESTING, INC.**

DRILL STEM TEST REPORT

H&C Oil Operating Inc

PO Box 86
Plainville KS 67663

ATTN: Marc Downing

Delbert Walt Trust #13-2

13-10-26 Sheridan,KS

Job Ticket: 54473

DST#: 5

Test Start: 2013.10.08 @ 14:47:00

GENERAL INFORMATION:

Formation: **LKC "H-I"**
 Deviated: No Whipstock: ft (KB)
 Time Tool Opened: 16:37:30
 Time Test Ended: 21:23:45
 Interval: **3934.00 ft (KB) To 3985.00 ft (KB) (TVD)**
 Total Depth: 3985.00 ft (KB) (TVD)
 Hole Diameter: 7.88 inches Hole Condition: Fair
 Test Type: Conventional Bottom Hole (Reset)
 Tester: Cody Bloedorn
 Unit No: 53
 Reference Elevations: 2562.00 ft (KB)
 2556.00 ft (CF)
 KB to GR/CF: 6.00 ft

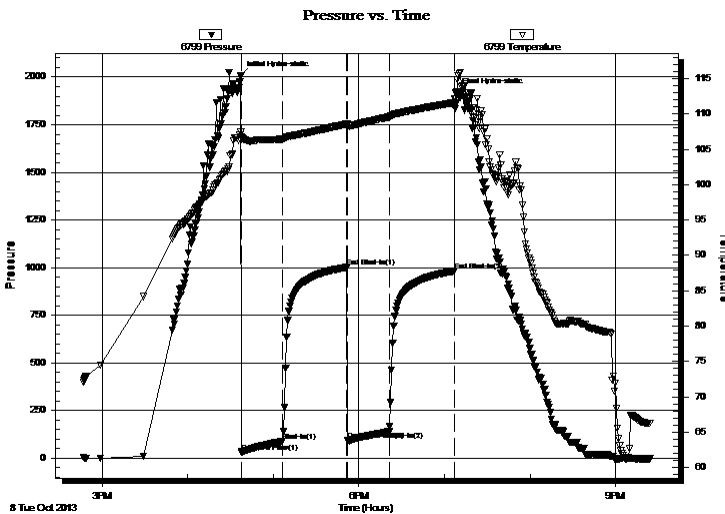
Serial #: 6799

Inside

Press @ RunDepth: 138.70 psig @ 3973.00 ft (KB) Capacity: 8000.00 psig
 Start Date: 2013.10.08 End Date: 2013.10.08 Last Calib.: 2013.10.08
 Start Time: 14:47:05 End Time: 21:23:44 Time On Btm: 2013.10.08 @ 16:37:15
 Time Off Btm: 2013.10.08 @ 19:07:45

TEST COMMENT: 30 - IF- B.O.B. in 5 minutes
 45 - IS- 1/2" retrun in 8 minutes. stayed there throughout
 30 - FF- B.O.B. in 6 minutes
 45 - FS- 8" return

PRESSURE SUMMARY



Time (Min.)	Pressure (psig)	Temp (deg F)	Annotation
0	2006.62	107.54	Initial Hydro-static
1	30.16	106.78	Open To Flow (1)
30	87.84	106.47	Shut-In(1)
75	1001.17	108.60	End Shut-In(1)
75	94.34	108.33	Open To Flow (2)
104	138.70	109.58	Shut-In(2)
150	981.91	111.63	End Shut-In(2)
151	1916.41	112.20	Final Hydro-static

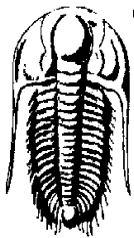
Recovery

Length (ft)	Description	Volume (bbl)
62.00	GOCMW, 10%G, 10%O, 30%M, 50%W	0.87
124.00	GOCM, 20%G, 20%O, 60%M	1.74
154.00	GMCWO, 5%W, 5%M, 10%G, 80%O	2.16
0.00	589' of G.I.P.	0.00

* Recovery from multiple tests

Gas Rates

	Choke (inches)	Pressure (psig)	Gas Rate (Mcf/d)



**TRILOBITE
TESTING, INC.**

DRILL STEM TEST REPORT

H&C Oil Operating Inc

PO Box 86
Plainville KS 67663

ATTN: Marc Downing

Delbert Walt Trust #13-2

13-10-26 Sheridan,KS

Job Ticket: 54473

DST#: 5

Test Start: 2013.10.08 @ 14:47:00

GENERAL INFORMATION:

Formation: **LKC "H-I"**

Deviated: No Whipstock: ft (KB)

Time Tool Opened: 16:37:30

Time Test Ended: 21:23:45

Interval: 3934.00 ft (KB) To 3985.00 ft (KB) (TVD)

Total Depth: 3985.00 ft (KB) (TVD)

Hole Diameter: 7.88 inches Hole Condition: Fair

Test Type: Conventional Bottom Hole (Reset)

Tester: Cody Bloedorn

Unit No: 53

Reference Elevations: 2562.00 ft (KB)

2556.00 ft (CF)

KB to GR/CF: 6.00 ft

Serial #: 8648

Outside

Press @ Run Depth: psig @ 3973.00 ft (KB)

Start Date: 2013.10.08 End Date: 2013.10.08

Start Time: 14:47:05 End Time: 21:22:14

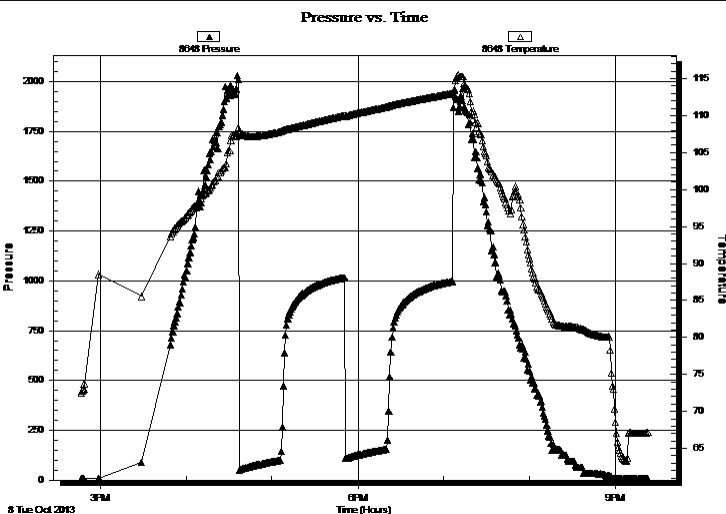
Capacity: 8000.00 psig

Last Calib.: 2013.10.08

Time On Btm:

Time Off Btm:

TEST COMMENT: 30 - IF- B.O.B. in 5 minutes
45 - IS- 1/2" retrun in 8 minutes. stayed there throughout
30 - FF- B.O.B. in 6 minutes
45 - FS- 8" return



PRESSURE SUMMARY

Time (Min.)	Pressure (psig)	Temp (deg F)	Annotation

Recovery

Length (ft)	Description	Volume (bbl)
62.00	GOCMW, 10%G, 10%O, 30%M, 50%W	0.87
124.00	GOCM, 20%G, 20%O, 60%M	1.74
154.00	GMCWO, 5%W, 5%M, 10%G, 80%O	2.16
0.00	589' of G.I.P.	0.00

Gas Rates

	Choke (inches)	Pressure (psig)	Gas Rate (Mcf/d)

* Recovery from multiple tests



**TRILOBITE
TESTING, INC.**

DRILL STEM TEST REPORT

TOOL DIAGRAM

H&C Oil Operating Inc

Delbert Walt Trust #13-2

PO Box 86
Plainville KS 67663

13-10-26 Sheridan,KS

ATTN: Marc Downing

Job Ticket: 54473

DST#: 5

Test Start: 2013.10.08 @ 14:47:00

Tool Information

Drill Pipe:	Length: 3930.00 ft	Diameter: 3.80 inches	Volume: 55.13 bbl	Tool Weight: 2000.00 lb
Heavy Wt. Pipe:	Length: 0.00 ft	Diameter: 0.00 inches	Volume: 0.00 bbl	Weight set on Packer: 30000.00 lb
Drill Collar:	Length: 0.00 ft	Diameter: 0.00 inches	Volume: 0.00 bbl	Weight to Pull Loose: 68000.00 lb
			<u>Total Volume: 55.13 bbl</u>	Tool Chased 0.00 ft
Drill Pipe Above KB:	17.00 ft			String Weight: Initial 62000.00 lb
Depth to Top Packer:	3934.00 ft			Final 64000.00 lb
Depth to Bottom Packer:	ft			
Interval between Packers:	51.00 ft			
Tool Length:	72.00 ft			
Number of Packers:	2	Diameter: 6.75 inches		

Tool Comments:

Tool Description

Tool Description	Length (ft)	Serial No.	Position	Depth (ft)	Accum. Lengths
Change Over Sub	1.00			3914.00	
Shut In Tool	5.00			3919.00	
Hydraulic tool	5.00			3924.00	
Packer	5.00			3929.00	21.00 Bottom Of Top Packer
Packer	5.00			3934.00	
Stubb	1.00			3935.00	
Perforations	5.00			3940.00	
Change Over Sub	1.00			3941.00	
Drill Pipe	31.00			3972.00	
Change Over Sub	1.00			3973.00	
Recorder	0.00	6799	Inside	3973.00	
Recorder	0.00	8648	Outside	3973.00	
Perforations	9.00			3982.00	
Bullnose	3.00			3985.00	51.00 Bottom Packers & Anchor

Total Tool Length: 72.00



**TRILOBITE
TESTING, INC.**

DRILL STEM TEST REPORT

FLUID SUMMARY

H&C Oil Operating Inc

Delbert Walt Trust #13-2

PO Box 86
Plainville KS 67663

13-10-26 Sheridan,KS

Job Ticket: 54473

DST#: 5

ATTN: Marc Downing

Test Start: 2013.10.08 @ 14:47:00

Mud and Cushion Information

Mud Type: Gel Chem

Cushion Type:

Oil API:

deg API

Mud Weight: 9.00 lb/gal

Cushion Length:

ft

Water Salinity:

ppm

Viscosity: 50.00 sec/qt

Cushion Volume:

bbbl

Water Loss: 5.99 in³

Gas Cushion Type:

Resistivity: ohm.m

Gas Cushion Pressure:

psig

Salinity: 1100.00 ppm

Filter Cake: inches

Recovery Information

Recovery Table

Length ft	Description	Volume bbbl
62.00	GOCMW, 10%G, 10%O, 30%M, 50%W	0.870
124.00	GOCM, 20%G, 20%O, 60%M	1.739
154.00	GMCWO, 5%W, 5%M, 10%G, 80%O	2.160
0.00	589' of G.I.P.	0.000

Total Length: 340.00 ft

Total Volume: 4.769 bbl

Num Fluid Samples: 0

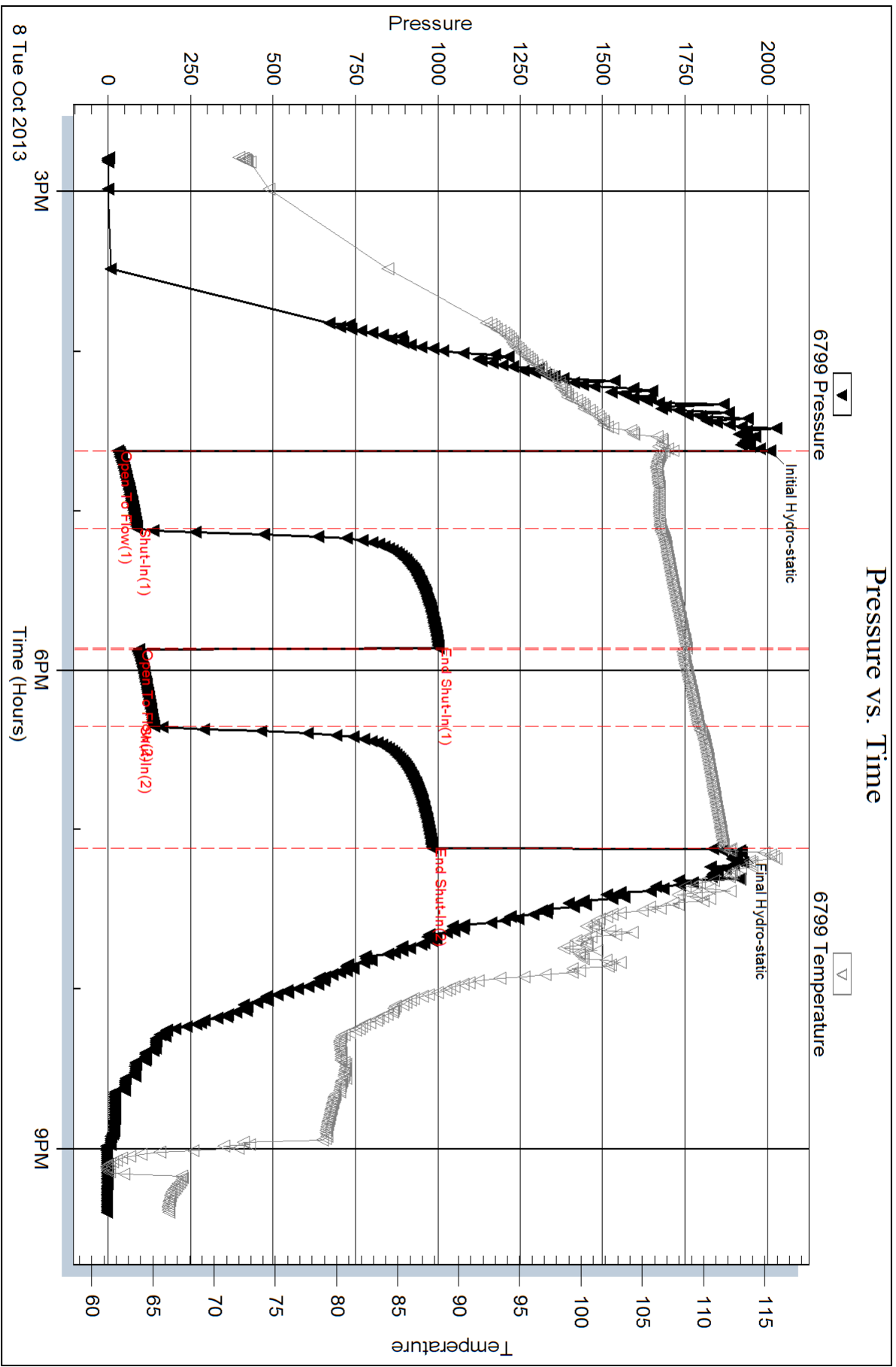
Num Gas Bombs: 0

Serial #:

Laboratory Name:

Laboratory Location:

Recovery Comments:

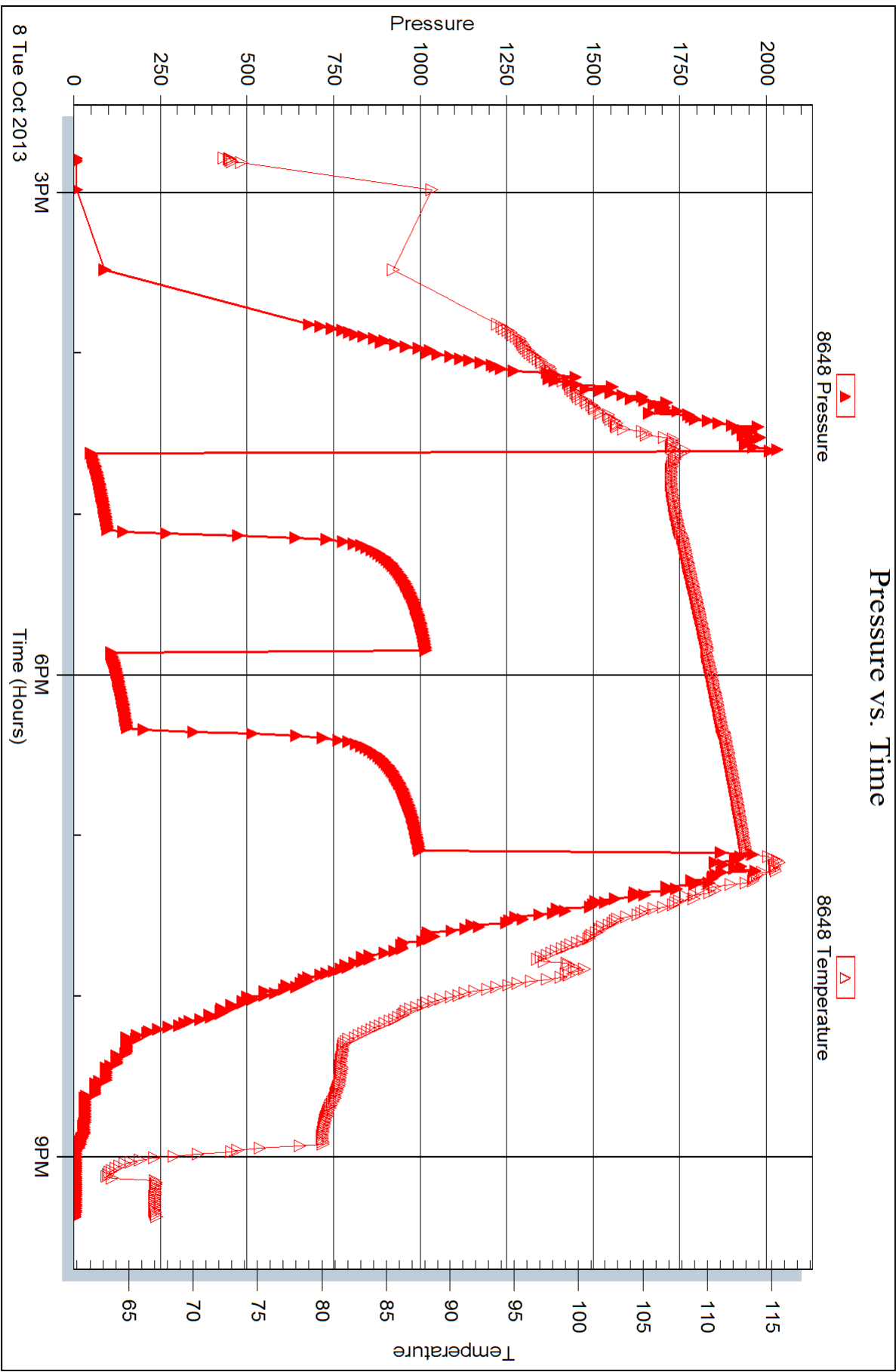


Serial #: 8648

Outside H&C Oil Operating Inc

13-10-26 Sheridan, KS

DST Test Number: 5





DRILL STEM TEST REPORT

Prepared For: **H&C Oil Operating Inc**

PO Box 86
Plainville KS 67663

ATTN: Marc Downing

13-10-26 Sheridan,KS

Delbert Walt Trust #13-2

Start Date: 2013.10.09 @ 04:37:00

End Date: 2013.10.09 @ 11:22:15

Job Ticket #: 54474 DST #: 6

Trilobite Testing, Inc

PO Box 362 Hays, KS 67601

ph: 785-625-4778 fax: 785-625-5620

Printed: 2013.10.10 @ 15:57:50

H&C Oil Operating Inc

Delbert Walt Trust #13-2

13-10-26 Sheridan,KS

DST # 6

LKC "I+J"

2013.10.09



TRILOBITE TESTING, INC.

DRILL STEM TEST REPORT

H&C Oil Operating Inc

Delbert Walt Trust #13-2

PO Box 86
Plainville KS 67663

13-10-26 Sheridan,KS

ATTN: Marc Downing

Job Ticket: 54474

DST#: 6

Test Start: 2013.10.09 @ 04:37:00

GENERAL INFORMATION:

Formation: **LKC "I+J"**
 Deviated: No Whipstock: ft (KB)
 Test Type: Conventional Bottom Hole (Reset)
 Time Tool Opened: 06:38:30
 Tester: Cody Bloedorn
 Time Test Ended: 11:22:15
 Unit No: 53
 Interval: **3965.00 ft (KB) To 4012.00 ft (KB) (TVD)**
 Reference Elevations: 2562.00 ft (KB)
 Total Depth: 4012.00 ft (KB) (TVD)
 2556.00 ft (CF)
 Hole Diameter: 7.88 inches
 Hole Condition: Fair
 KB to GR/CF: 6.00 ft

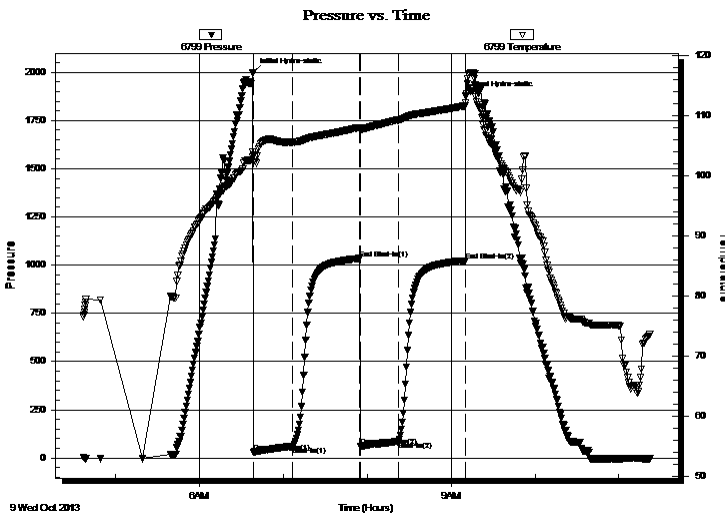
Serial #: 6799

Inside

Press @ Run Depth: 84.70 psig @ 4004.00 ft (KB) Capacity: 8000.00 psig
 Start Date: 2013.10.09 End Date: 2013.10.09 Last Calib.: 2013.10.09
 Start Time: 04:37:05 End Time: 11:22:14 Time On Btm: 2013.10.09 @ 06:38:15
 Time Off Btm: 2013.10.09 @ 09:10:15

TEST COMMENT: 30 - IF- B.O.B. in 5 minutes
 45 - IS- No return
 30 - FF- B.O.B. in 4 minutes
 45 - FS- No return

PRESSURE SUMMARY



Time (Min.)	Pressure (psig)	Temp (deg F)	Annotation
0	1999.24	103.93	Initial Hydro-static
1	30.03	103.38	Open To Flow (1)
29	59.51	105.62	Shut-In(1)
76	1034.28	108.06	End Shut-In(1)
77	62.50	107.76	Open To Flow (2)
104	84.70	109.32	Shut-In(2)
152	1023.41	111.65	End Shut-In(2)
152	1880.30	112.11	Final Hydro-static

Recovery

Length (ft)	Description	Volume (bbl)
124.00	GHOCM, 10%M, 40%O, 50%G	1.74
30.00	SOCM, 5%O, 95%M	0.42
0.00	713' of G.I.P.	0.00

* Recovery from multiple tests

Gas Rates

Choke (inches)	Pressure (psig)	Gas Rate (Mcf/d)



**TRILOBITE
TESTING, INC.**

DRILL STEM TEST REPORT

TOOL DIAGRAM

H&C Oil Operating Inc

Delbert Walt Trust #13-2

PO Box 86
Plainville KS 67663

13-10-26 Sheridan,KS

ATTN: Marc Downing

Job Ticket: 54474

DST#: 6

Test Start: 2013.10.09 @ 04:37:00

Tool Information

Drill Pipe:	Length: 3961.00 ft	Diameter: 3.80 inches	Volume: 55.56 bbl	Tool Weight: 2000.00 lb
Heavy Wt. Pipe:	Length: 0.00 ft	Diameter: 0.00 inches	Volume: 0.00 bbl	Weight set on Packer: 30000.00 lb
Drill Collar:	Length: 0.00 ft	Diameter: 0.00 inches	Volume: 0.00 bbl	Weight to Pull Loose: 68000.00 lb
			<u>Total Volume: 55.56 bbl</u>	Tool Chased 0.00 ft
Drill Pipe Above KB:	17.00 ft			String Weight: Initial 62000.00 lb
Depth to Top Packer:	3965.00 ft			Final 64000.00 lb
Depth to Bottom Packer:	ft			
Interval between Packers:	47.00 ft			
Tool Length:	68.00 ft			
Number of Packers:	2	Diameter: 6.75 inches		

Tool Comments:

Tool Description

Tool Description	Length (ft)	Serial No.	Position	Depth (ft)	Accum. Lengths
Change Over Sub	1.00			3945.00	
Shut In Tool	5.00			3950.00	
Hydraulic tool	5.00			3955.00	
Packer	5.00			3960.00	21.00 Bottom Of Top Packer
Packer	5.00			3965.00	
Stubb	1.00			3966.00	
Perforations	5.00			3971.00	
Change Over Sub	1.00			3972.00	
Drill Pipe	31.00			4003.00	
Change Over Sub	1.00			4004.00	
Recorder	0.00	6799	Inside	4004.00	
Recorder	0.00	8648	Outside	4004.00	
Perforations	5.00			4009.00	
Bullnose	3.00			4012.00	47.00 Bottom Packers & Anchor

Total Tool Length: 68.00



**TRILOBITE
TESTING, INC.**

DRILL STEM TEST REPORT

FLUID SUMMARY

H&C Oil Operating Inc

Delbert Walt Trust #13-2

PO Box 86
Plainville KS 67663

13-10-26 Sheridan,KS

Job Ticket: 54474

DST#: 6

ATTN: Marc Downing

Test Start: 2013.10.09 @ 04:37:00

Mud and Cushion Information

Mud Type: Gel Chem

Cushion Type:

Oil API:

deg API

Mud Weight: 9.00 lb/gal

Cushion Length:

ft

Water Salinity:

ppm

Viscosity: 50.00 sec/qt

Cushion Volume:

bbbl

Water Loss: 5.99 in³

Gas Cushion Type:

Resistivity: ohm.m

Gas Cushion Pressure:

psig

Salinity: 1100.00 ppm

Filter Cake: inches

Recovery Information

Recovery Table

Length ft	Description	Volume bbl
124.00	GHOCM, 10%M, 40%O, 50%G	1.739
30.00	SOCM, 5%O, 95%M	0.421
0.00	713' of G.I.P.	0.000

Total Length: 154.00 ft Total Volume: 2.160 bbl

Num Fluid Samples: 0

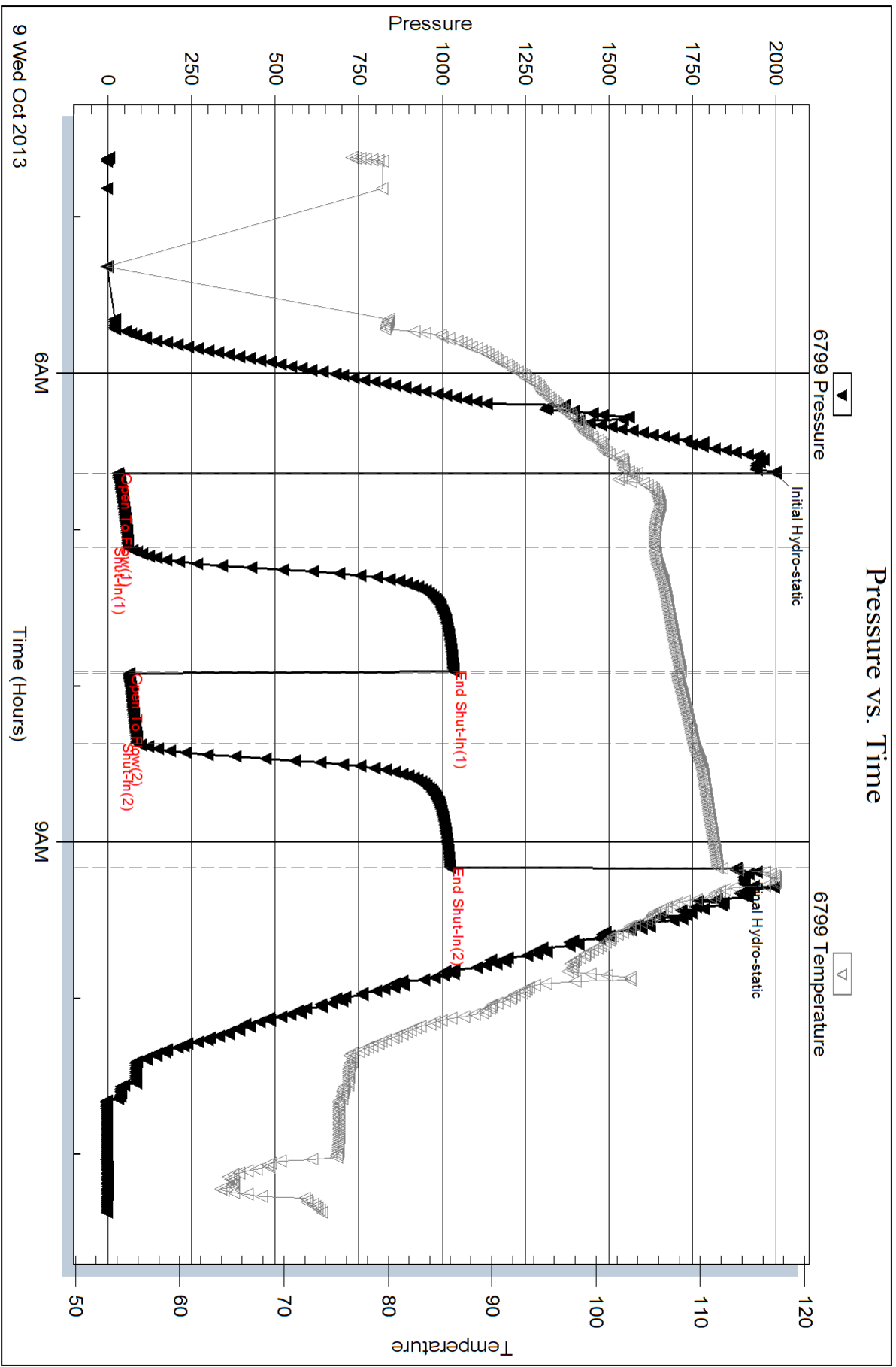
Num Gas Bombs: 0

Serial #:

Laboratory Name:

Laboratory Location:

Recovery Comments:

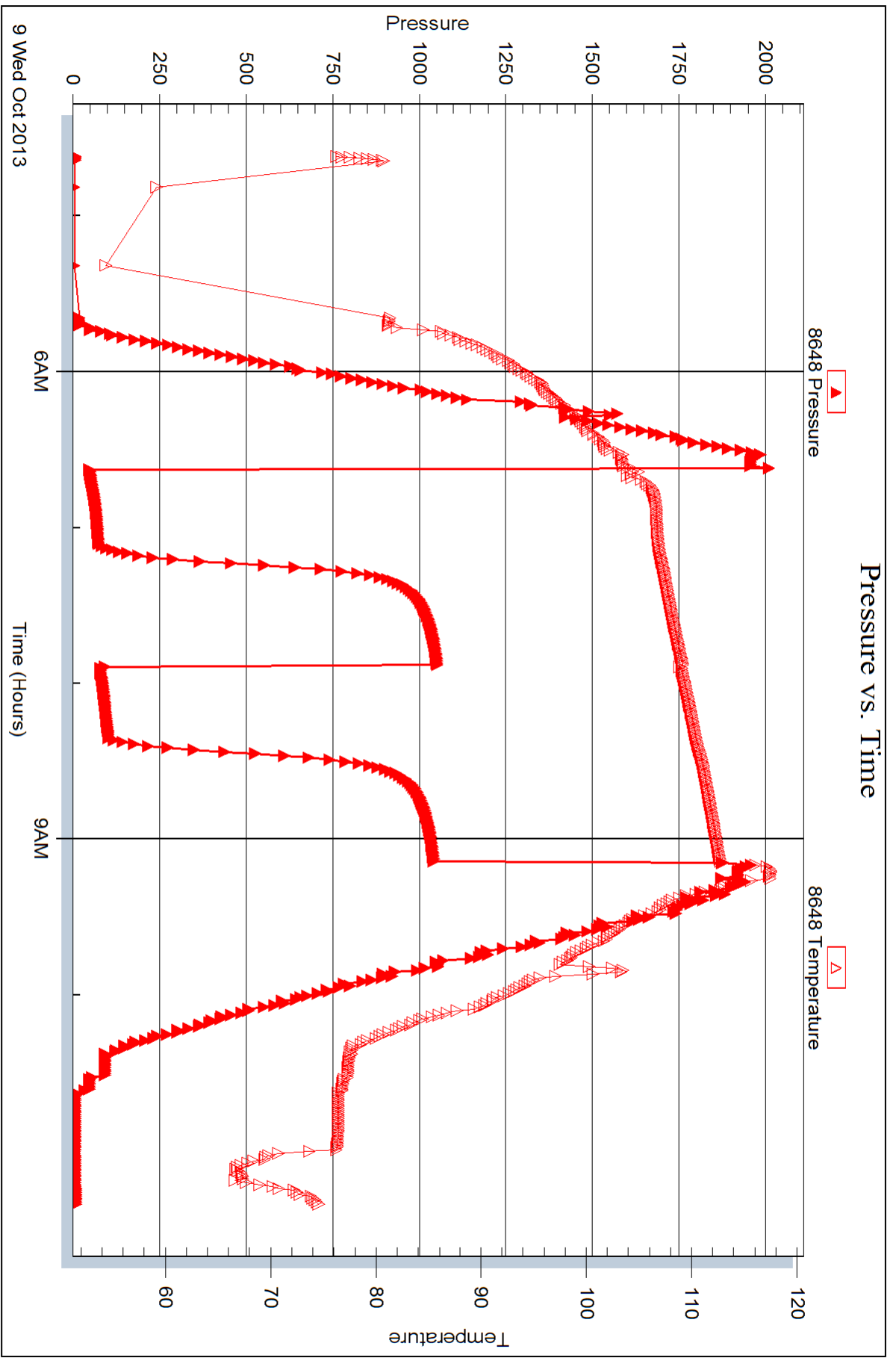


Serial #: 8648

Outside H&C Oil Operating Inc

13-10-26 Sheridan, KS

DST Test Number: 6



Trilobite Testing, Inc

Ref. No: 54474

Printed: 2013.10.10 @ 15:57:52



DRILL STEM TEST REPORT

Prepared For: **H&C Oil Operating Inc**

PO Box 86
Plainville KS 67663

ATTN: Marc Downing

13-10-26 Sheridan,KS

Delbert Walt Trust #13-2

Start Date: 2013.10.09 @ 19:25:00

End Date: 2013.10.10 @ 01:05:00

Job Ticket #: 54475 DST #: 7

Trilobite Testing, Inc

PO Box 362 Hays, KS 67601

ph: 785-625-4778 fax: 785-625-5620

Printed: 2013.10.10 @ 15:57:17

H&C Oil Operating Inc

Delbert Walt Trust #13-2

13-10-26 Sheridan,KS

DST # 7

LKC "K"

2013.10.09



TRILOBITE TESTING, INC.

DRILL STEM TEST REPORT

H&C Oil Operating Inc

Delbert Walt Trust #13-2

PO Box 86
Plainville KS 67663

13-10-26 Sheridan,KS

ATTN: Marc Downing

Job Ticket: 54475

DST#: 7

Test Start: 2013.10.09 @ 19:25:00

GENERAL INFORMATION:

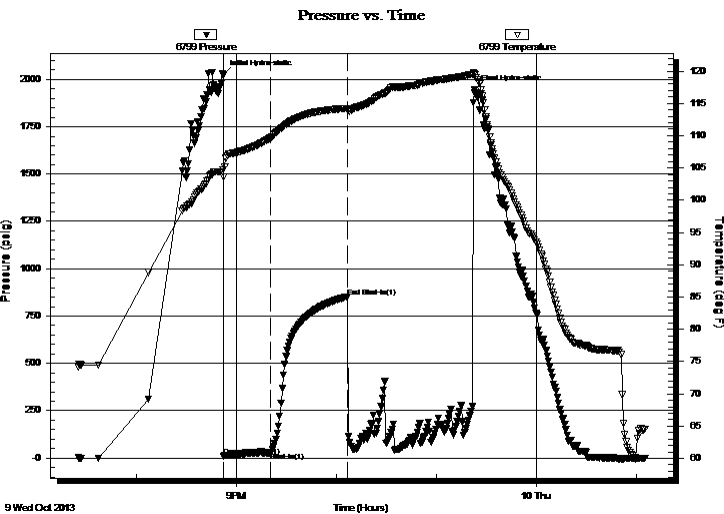
Formation: **LKC "K"**
 Deviated: No Whipstock: ft (KB)
 Time Tool Opened: 20:52:00
 Time Test Ended: 01:05:00
 Interval: **4008.00 ft (KB) To 4034.00 ft (KB) (TVD)**
 Total Depth: 4034.00 ft (KB) (TVD)
 Hole Diameter: 7.88 inches Hole Condition: Fair
 Test Type: Conventional Bottom Hole (Reset)
 Tester: Cody Bloedorn
 Unit No: 53
 Reference Elevations: 2562.00 ft (KB)
 2556.00 ft (CF)
 KB to GR/CF: 6.00 ft

Serial #: 6799

Inside

Press @ Run Depth: 28.68 psig @ 4009.00 ft (KB) Capacity: 8000.00 psig
 Start Date: 2013.10.09 End Date: 2013.10.10 Last Calib.: 2013.10.10
 Start Time: 19:25:05 End Time: 01:04:59 Time On Btm: 2013.10.09 @ 20:51:45
 Time Off Btm: 2013.10.09 @ 23:22:30

TEST COMMENT: 30 - IF- B.O.B. in 8 minutes
 45 - IS- Surface return for 7 minutes and then died.
 30 - FF- B.O.B. in 11 minutes
 45 - FS- No return



PRESSURE SUMMARY

Time (Min.)	Pressure (psig)	Temp (deg F)	Annotation
0	2023.84	104.75	Initial Hydro-static
1	10.23	103.56	Open To Flow (1)
29	28.68	109.63	Shut-In(1)
75	852.35	114.23	End Shut-In(1)
151	1943.74	119.57	Final Hydro-static

Recovery

Length (ft)	Description	Volume (bbl)
154.00	GHOCM, 10%M, 40%G, 50%O	2.16
0.00	496' of G.I.P.	0.00

* Recovery from multiple tests

Gas Rates

Choke (inches)	Pressure (psig)	Gas Rate (Mcf/d)



**TRILOBITE
TESTING, INC.**

DRILL STEM TEST REPORT

TOOL DIAGRAM

H&C Oil Operating Inc

Delbert Walt Trust #13-2

PO Box 86
Plainville KS 67663

13-10-26 Sheridan,KS

ATTN: Marc Downing

Job Ticket: 54475

DST#: 7

Test Start: 2013.10.09 @ 19:25:00

Tool Information

Drill Pipe:	Length: 3992.00 ft	Diameter: 3.80 inches	Volume: 56.00 bbl	Tool Weight: 2000.00 lb
Heavy Wt. Pipe:	Length: 0.00 ft	Diameter: 0.00 inches	Volume: 0.00 bbl	Weight set on Packer: 30000.00 lb
Drill Collar:	Length: 0.00 ft	Diameter: 0.00 inches	Volume: 0.00 bbl	Weight to Pull Loose: lb
			<u>Total Volume: 56.00 bbl</u>	Tool Chased 0.00 ft
Drill Pipe Above KB:	5.00 ft			String Weight: Initial 64000.00 lb
Depth to Top Packer:	4008.00 ft			Final lb
Depth to Bottom Packer:	ft			
Interval between Packers:	26.00 ft			
Tool Length:	47.00 ft			
Number of Packers:	2	Diameter: 6.75 inches		

Tool Comments:

Tool Description	Length (ft)	Serial No.	Position	Depth (ft)	Accum. Lengths
------------------	-------------	------------	----------	------------	----------------

Change Over Sub	1.00			3988.00	
Shut In Tool	5.00			3993.00	
Hydraulic tool	5.00			3998.00	
Packer	5.00			4003.00	21.00 Bottom Of Top Packer
Packer	5.00			4008.00	
Stubb	1.00			4009.00	
Recorder	0.00	6799	Inside	4009.00	
Recorder	0.00	8648	Outside	4009.00	
Perforations	22.00			4031.00	
Bullnose	3.00			4034.00	26.00 Bottom Packers & Anchor
Total Tool Length:	47.00				



**TRILOBITE
TESTING, INC.**

DRILL STEM TEST REPORT

FLUID SUMMARY

H&C Oil Operating Inc

Delbert Walt Trust #13-2

PO Box 86
Plainville KS 67663

13-10-26 Sheridan,KS

Job Ticket: 54475

DST#: 7

ATTN: Marc Downing

Test Start: 2013.10.09 @ 19:25:00

Mud and Cushion Information

Mud Type: Gel Chem

Cushion Type:

Oil API:

deg API

Mud Weight: 9.00 lb/gal

Cushion Length:

ft

Water Salinity:

ppm

Viscosity: 50.00 sec/qt

Cushion Volume:

bbbl

Water Loss: 5.99 in³

Gas Cushion Type:

Resistivity: ohm.m

Gas Cushion Pressure:

psig

Salinity: 1100.00 ppm

Filter Cake: inches

Recovery Information

Recovery Table

Length ft	Description	Volume bbl
154.00	GHOCM, 10%M, 40%G, 50%O	2.160
0.00	496' of G.I.P.	0.000

Total Length: 154.00 ft Total Volume: 2.160 bbl

Num Fluid Samples: 0

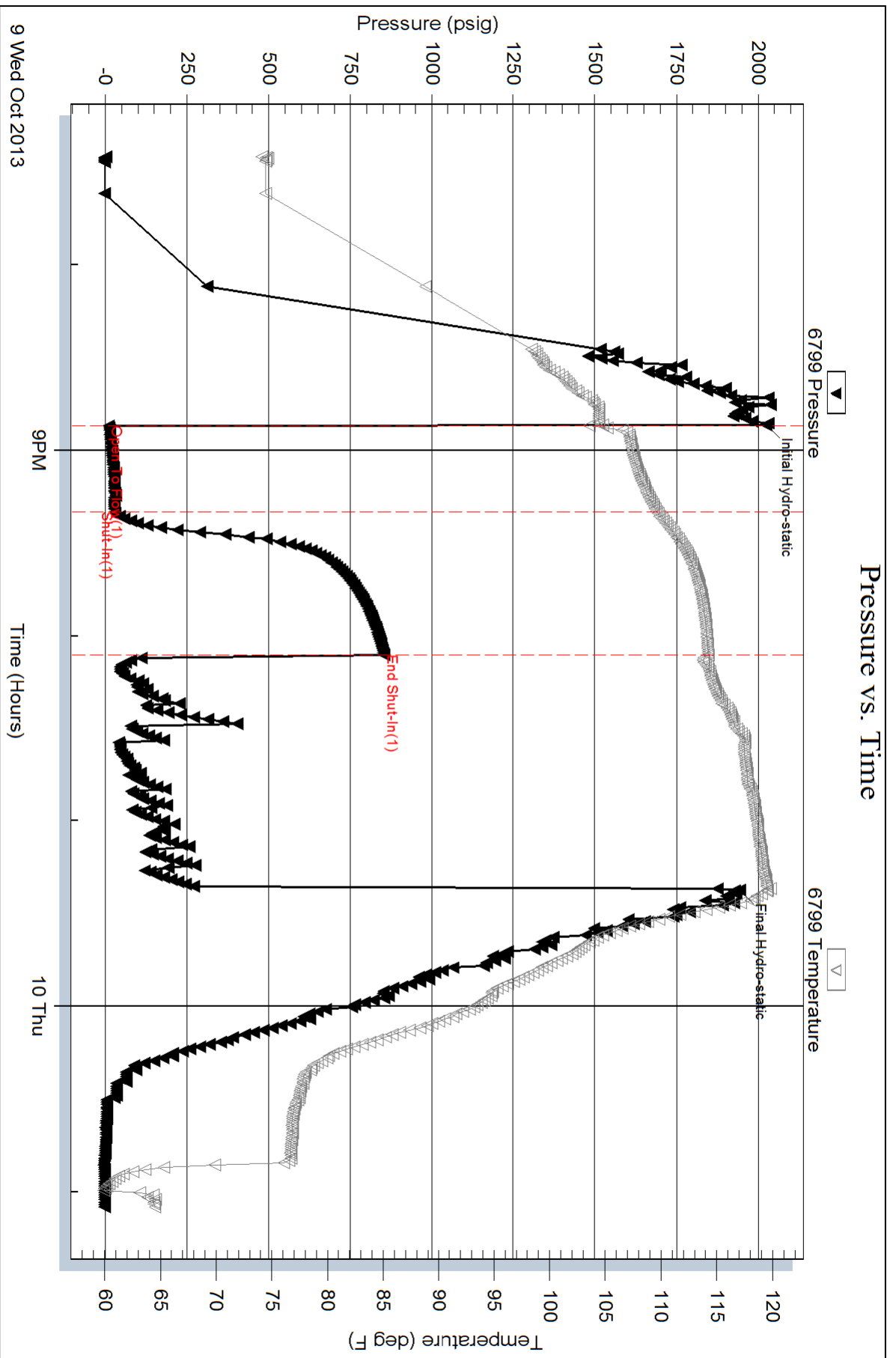
Num Gas Bombs: 0

Serial #:

Laboratory Name:

Laboratory Location:

Recovery Comments:

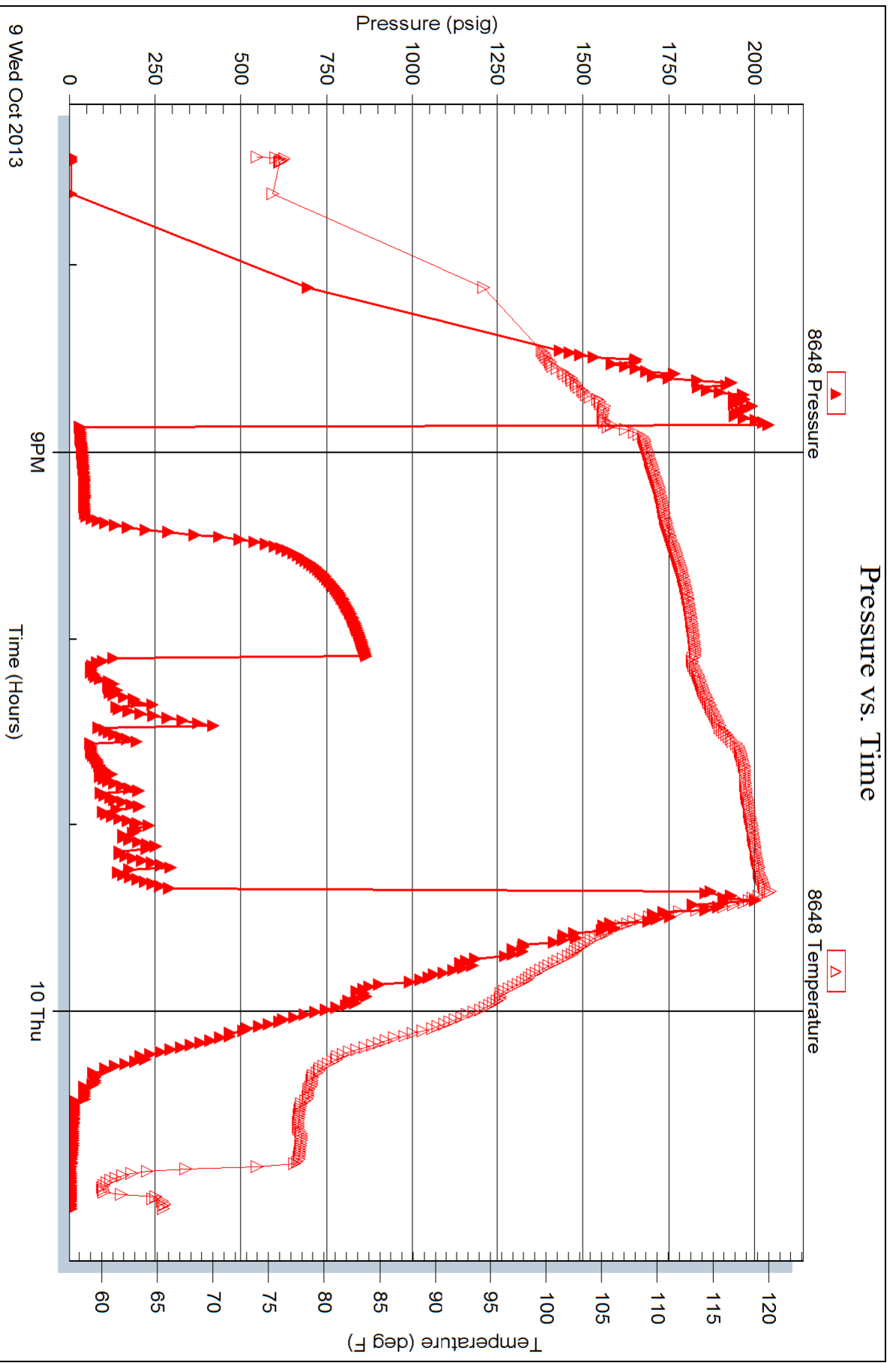


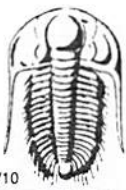
Serial #: 8648

Outside H&C Oil Operating Inc

13-10-26 Sheridan, KS

DST Test Number: 7





TRILOBITE TESTING INC.

1515 Commerce Parkway • Hays, Kansas 67601

Test Ticket

NO. 54469

Well Name & No. Delbert Walt Trust #13-2 Test No. 1 Date 10-6-13
 Company H & C Oil Operating Inc Elevation 2562 KB 2556 GL
 Address Po Box 86, Plainville KS, 67663
 Co. Rep / Geo. Marc Downing Rig American Eagle #2
 Location: Sec. 13 Twp. 105 Rge. 26w Co. Sheridan State KS

Interval Tested 3776 - 3836 Zone Tested LKC "A"
 Anchor Length 60' Drill Pipe Run 3777 Mud Wt. 8.8
 Top Packer Depth 3771 Drill Collars Run — Vis 608
 Bottom Packer Depth 3776 Wt. Pipe Run — WL 6.0
 Total Depth 3836 Chlorides 1,000 ppm System LCM —

Blow Description ~~IS~~ Miss Run - Hit Bridge - tried to go through
~~IS~~ it. Didnt work - Came out with tool
~~IS~~
~~IS~~

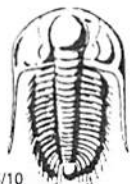
Rec	Feet of	%gas	%oil	%water	%mud

Rec Total _____ BHT _____ Gravity _____ API RW _____ @ _____ °F Chlorides _____ ppm

(A) Initial Hydrostatic _____ Test 950 T-On Location 6:30 am
 (B) First Initial Flow _____ Jars _____ T-Started 7:09 am
 (C) First Final Flow _____ Safety Joint _____ T-Open _____
 (D) Initial Shut-In _____ Circ Sub _____ T-Pulled _____
 (E) Second Initial Flow _____ Hourly Standby _____ T-Out 10:54 am
 (F) Second Final Flow _____ Mileage 123 RT 190.65 Comments _____
 (G) Final Shut-In _____ Sampler _____
 (H) Final Hydrostatic _____ Straddle _____ Ruined Shale Packer _____
 Shale Packer _____ Ruined Packer _____
 Extra Packer _____ Extra Copies _____
 Initial Open _____ Extra Recorder _____ Sub Total 0
 Initial Shut-In _____ Day Standby _____ Total 1140.65
 Final Flow _____ Accessibility _____ MP/DST Disc't _____
 Final Shut-In _____ Sub Total 1140.65

Approved By _____ Our Representative Cody Bledorn

Trilobite Testing Inc. shall not be liable for damaged of any kind of the property or personnel of the one for whom a test is made, or for any loss suffered or sustained, directly or indirectly, through the use of its equipment, or its statements or opinion concerning the results of any test, tools lost or damaged in the hole shall be paid for at cost by the party for whom the test is made.



TRILOBITE TESTING INC.

1515 Commerce Parkway • Hays, Kansas 67601

Test Ticket

NO. 54470

Well Name & No. Delbert Walf Trust 13-2 Test No. 2 Date 10-6-13
 Company H&C Oil Operating Inc Elevation 2562 KB 2556 GL
 Address Po Box 86, Plainville KS, 67663
 Co. Rep / Geo. Marc Downing Rig American Eagle #2
 Location: Sec. 13 Twp. 10s Rge. 26w Co. Sheridan State KS

Interval Tested 3776 - 3836 Zone Tested LKC "A"
 Anchor Length 60' Drill Pipe Run 3777' Mud Wt. 8.8
 Top Packer Depth 3771 Drill Collars Run — Vis 60+
 Bottom Packer Depth 3776 Wt. Pipe Run — WL 6.0
 Total Depth 3836 Chlorides 1,000 ppm System LCM —

Blow Description IF - 1/4" blow, died back to surface blow
ISI - No return
FF - No blow
FSI - No return

Rec	Feet of	%gas	%oil	%water	%mud
<u>6</u>	<u>SOCM</u>	<u>5</u>		<u>95</u>	
<u>1</u>	<u>Free oil</u>	<u>100</u>			

Rec Total 7' BHT 1030 Gravity — API RW — @ — °F Chlorides — ppm

(A) Initial Hydrostatic <u>1876</u>	<input checked="" type="checkbox"/> Test <u>1150</u>	T-On Location <u>4:46 pm</u>
(B) First Initial Flow <u>23</u>	<input type="checkbox"/> Jars	T-Started <u>5:14 pm</u>
(C) First Final Flow <u>25</u>	<input type="checkbox"/> Safety Joint	T-Open <u>6:37 pm</u>
(D) Initial Shut-In <u>576</u>	<input type="checkbox"/> Circ Sub	T-Pulled <u>8:37 pm</u>
(E) Second Initial Flow <u>25</u>	<input type="checkbox"/> Hourly Standby	T-Out <u>10:22 pm</u>
(F) Second Final Flow <u>26</u>	<input checked="" type="checkbox"/> Mileage <u>123 RT 190.65</u>	Comments
(G) Final Shut-In <u>518</u>	<input type="checkbox"/> Sampler	
(H) Final Hydrostatic <u>1819</u>	<input type="checkbox"/> Straddle	

Initial Open 30
 Initial Shut-In 30
 Final Flow 30
 Final Shut-In 30

Ruined Shale Packer
 Ruined Packer
 Extra Copies
 Sub Total 0
 Total 1340.65
 MP/DST Disc't

Sub Total 1340.65

Approved By _____ Our Representative Cody V...

Trilobite Testing Inc. shall not be liable for damaged of any kind of the property or personnel of the one for whom a test is made, or for any loss suffered or sustained, directly or indirectly, through the use of its equipment, or its statements or opinion concerning the results of any test, tools lost or damaged in the hole shall be paid for at cost by the party for whom the test is made.



TRILOBITE TESTING INC.

1515 Commerce Parkway • Hays, Kansas 67601

Test Ticket

NO. 54471

Well Name & No. Delbert Walt Trust #13-2 Test No. 3 Date 10-7-13
 Company H&C Oil Operating INC Elevation 2562 KB 2556 GL
 Address Po Box 86, Plainville KS, 67663
 Co. Rep / Geo. Marc Downing Rig American Eagle #2
 Location: Sec. 13 Twp. 105 Rge. 26W Co. Sheridan State KS

Interval Tested 3831 - 3880 Zone Tested LKC "C-D"
 Anchor Length 49' Drill Pipe Run 3838' Mud Wt. 9.0
 Top Packer Depth 3826 Drill Collars Run — Vis 03
 Bottom Packer Depth 3831 Wt. Pipe Run — WL 5.8
 Total Depth 3880 Chlorides 1100 ppm System LCM 4#

Blow Description IF - B.O.B. in 10 Minutes
ISI - surface return
FF - 6.5" blow
FSI - Surface return

Rec	Feet of	%gas	%oil	%water	%mud
<u>62</u>	<u>MW</u>		<u>60</u>	<u>40</u>	
<u>114</u>	<u>OCM</u>	<u>20</u>		<u>80</u>	
<u>10</u>	<u>Free oil</u>	<u>100</u>			
Rec	Feet of	%gas	%oil	%water	%mud
Rec	Feet of	%gas	%oil	%water	%mud

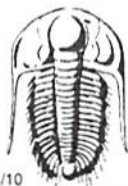
Rec Total 186' BHT 111° Gravity — API RW — @ — °F Chlorides — ppm

(A) Initial Hydrostatic 1908 Test 1150 T-On Location 5:45 am
 (B) First Initial Flow 31 Jars — T-Started 6:24 am
 (C) First Final Flow 74 Safety Joint — T-Open 8:45 am
 (D) Initial Shut-In 604 Circ Sub — T-Pulled 11:45 pm
 (E) Second Initial Flow 79 Hourly Standby — T-Out 1:46 pm
 (F) Second Final Flow 105 Mileage 123 RT 190.65 Comments —
 (G) Final Shut-In 549 Sampler —
 (H) Final Hydrostatic 1834 Straddle —

Initial Open 45 Shale Packer — Ruined Shale Packer —
 Initial Shut-In 45 Extra Packer — Ruined Packer —
 Final Flow 45 Extra Recorder — Extra Copies —
 Final Shut-In 45 Day Standby — Sub Total 0
 Accessibility — Total 1340.65
 Sub Total 1340.65 MP/DST Disc't —

Approved By _____ Our Representative Cody Bloedorn

Trilobite Testing Inc. shall not be liable for damaged of any kind of the property or personnel of the one for whom a test is made, or for any loss suffered or sustained, directly or indirectly, through the use of its equipment, or its statements or opinion concerning the results of any test, tools lost or damaged in the hole shall be paid for at cost by the party for whom the test is made.



TRILOBITE TESTING INC.

1515 Commerce Parkway • Hays, Kansas 67601

Test Ticket

NO. 54472

Well Name & No. Delbert Walt Trust #13-2 Test No. 4 Date 10-7-13
 Company H & C Oil Operating INC Elevation 2562 KB 2556 GL
 Address Po Box 86, Plainville KS, 67663
 Co. Rep / Geo. Marc Downing Rig American Eagle #2
 Location: Sec. 13 Twp. 10s Rge. 26w Co. Sheridan State KS

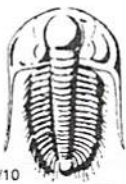
Interval Tested 3879 - 3903 Zone Tested LKC "E & F"
 Anchor Length 24' Drill Pipe Run 3869 Mud Wt. 9.0
 Top Packer Depth 3874 Drill Collars Run - Vis 63
 Bottom Packer Depth 3879 Wt. Pipe Run - WL 5.8
 Total Depth 3903 Chlorides 1100 ppm System LCM 4H
 Blow Description IF - 9" blow
ISI - No return
FF - 6" blow
FSI - No return for 10 Min. Then Weak Surface blow

Rec	Feet of	%gas	%oil	%water	%mud
<u>124</u>	<u>WM</u>			<u>50</u>	<u>50</u>
<u>40</u>	<u>OCWM</u>		<u>15</u>	<u>5</u>	<u>80</u>
<u>5</u>	<u>Free oil</u>		<u>100</u>		

Rec Total 169 BHT 118° Gravity - API RW .39 @ 60 °F Chlorides 38,000 ppm
 (A) Initial Hydrostatic 1934 Test 1150 T-On Location 9:07 pm
 (B) First Initial Flow 8 Jars - T-Started 9:23 pm
 (C) First Final Flow 47 Safety Joint - T-Open 10:47 pm
 (D) Initial Shut-In 954 Circ Sub - T-Pulled 1:47 am
 (E) Second Initial Flow 54 Hourly Standby - T-Out 3:30 am
 (F) Second Final Flow 84 Mileage 123 RT 190.65
 (G) Final Shut-In 929 Sampler -
 (H) Final Hydrostatic 1891 Straddle -
 Shale Packer -
 Extra Packer -
 Extra Recorder -
 Day Standby -
 Accessibility -
 Sub Total 1340.65
 Initial Open 45
 Initial Shut-In 45
 Final Flow 45
 Final Shut-In 45
 Sub Total 1340.65

Approved By _____ Our Representative Cody B...

Trilobite Testing Inc. shall not be liable for damaged of any kind of the property or personnel of the one for whom a test is made, or for any loss suffered or sustained, directly or indirectly, through the use of its equipment, or its statements or opinion concerning the results of any test, tools lost or damaged in the hole shall be paid for at cost by the party for whom the test is made.



TRILOBITE TESTING INC.

1515 Commerce Parkway • Hays, Kansas 67601

Test Ticket

NO. 54473

Well Name & No. Delbert Walt Trust #13-2 Test No. 5 Date 10-8-13
 Company H&C Oil Operating Inc Elevation 2562 KB 2556 GL
 Address Po Box 86, Plainville KS, 67663
 Co. Rep / Geo. Marc Downing Rig American Eagle #2
 Location: Sec. 13 Twp. 10S Rge. 26W Co. Sheridan State KS

Interval Tested 3934 - 3985 Zone Tested LKC "H-I"
 Anchor Length 51' Drill Pipe Run 3930' Mud Wt. 9.1
 Top Packer Depth 3929 Drill Collars Run — Vis 50
 Bottom Packer Depth 3934 Wt. Pipe Run — WL 6.0
 Total Depth 3985 Chlorides 1100 ppm System LCM 2#

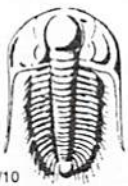
Blow Description IF - B.O.B. in 5 minutes
ISI - 1/2" return in 8 minutes. Stayed there throughout
FF - B.O.B. in 6 minutes
FSI - 8" return

Rec	Feet of	%gas	%oil	%water	%mud
<u>62</u>	<u>60CMW</u>	<u>10</u>	<u>10</u>	<u>50</u>	<u>30</u>
<u>124</u>	<u>60CM</u>	<u>20</u>	<u>20</u>	<u>—</u>	<u>60</u>
<u>154</u>	<u>6MCWO</u>	<u>10</u>	<u>80</u>	<u>50</u>	<u>5</u>
Rec	Feet of	%gas	%oil	%water	%mud
Rec	Feet of <u>589' of G.I.P.</u>	%gas	%oil	%water	%mud
Rec Total	<u>340'</u> BHT <u>1110</u>	Gravity	API RW	@	°F Chlorides

(A) Initial Hydrostatic 2006 Test 1150 T-On Location 2:26 pm
 (B) First Initial Flow 30 Jars — T-Started 2:47 pm
 (C) First Final Flow 87 Safety Joint — T-Open 4:37 pm
 (D) Initial Shut-In 1001 Circ Sub — T-Pulled 7:07 pm
 (E) Second Initial Flow 94 Hourly Standby — T-Out 9:23 pm
 (F) Second Final Flow 138 Mileage 123 RT 190.65 Comments —
 (G) Final Shut-In 981 Sampler —
 (H) Final Hydrostatic 1916 Straddle —
 Shale Packer — Ruined Shale Packer —
 Extra Packer — Ruined Packer —
 Extra Recorder — Extra Copies —
 Initial Open 30 Day Standby — Sub Total 0
 Initial Shut-In 45 Accessibility — Total 1340.65
 Final Flow 30 Sub Total 1340.65 MP/DST Disc't —
 Final Shut-In 45

Approved By _____ Our Representative Lody Blad

Trilobite Testing Inc. shall not be liable for damaged of any kind of the property or personnel of the one for whom a test is made, or for any loss suffered or sustained, directly or indirectly, through the use of its equipment, or its statements or opinion concerning the results of any test, tools lost or damaged in the hole shall be paid for at cost by the party for whom the test is made.



TRILOBITE TESTING INC.

1515 Commerce Parkway • Hays, Kansas 67601

Test Ticket

NO. **54474**

Well Name & No. Delbert Walt Trust #13-2 Test No. 6 Date 10-9-13
 Company H & C Oil Operating Inc Elevation 2562 KB 2556 GL
 Address PO Box 86, Plainville KS, 67663
 Co. Rep / Geo. Marc Downing Rig American Eagle #2
 Location: Sec. 13 Twp. 10s Rge. 26W Co. Sheridan State KS

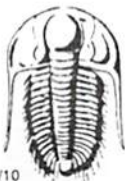
Interval Tested 3965 - 4012 Zone Tested LKC "I & J"
 Anchor Length 47' Drill Pipe Run 3961' Mud Wt. 9.1
 Top Packer Depth 3960 Drill Collars Run — Vis 50
 Bottom Packer Depth 3965 Wt. Pipe Run — WL 6.0
 Total Depth 4012 Chlorides 1100 ppm System LCM —
 Blow Description IF - B.O.B. in 5 minutes
ISI - No return
FF - B.O.B. in 4 minutes
FSI - No return

Rec	Feet of	%gas	%oil	%water	%mud
<u>124</u>	<u>6 HOCM</u>	<u>50</u>	<u>40</u>	<u>10</u>	<u>—</u>
<u>30</u>	<u>50CM</u>	<u>—</u>	<u>5</u>	<u>95</u>	<u>—</u>
<u>—</u>	<u>—</u>	<u>—</u>	<u>—</u>	<u>—</u>	<u>—</u>
<u>—</u>	<u>713' G.I.P.</u>	<u>—</u>	<u>—</u>	<u>—</u>	<u>—</u>
<u>—</u>	<u>—</u>	<u>—</u>	<u>—</u>	<u>—</u>	<u>—</u>

Rec Total 154 BHT 111° Gravity — API RW — @ — ° F Chlorides — ppm

(A) Initial Hydrostatic 1999 Test 1250 T-On Location 4:00am
 (B) First Initial Flow 30 Jars — T-Started 4:37am
 (C) First Final Flow 59 Safety Joint — T-Open 6:39am
 (D) Initial Shut-In 1034 Circ Sub — T-Pulled 9:09am
 (E) Second Initial Flow 62 Hourly Standby — T-Out 11:22am
 (F) Second Final Flow 84 Mileage 123 RT 190.65 Comments *over 4,000 Feet*
 (G) Final Shut-In 1023 Sampler —
 (H) Final Hydrostatic 1880 Straddle — Ruined Shale Packer —
 Shale Packer — Ruined Packer —
 Extra Packer — Extra Copies —
 Initial Open 30 Extra Recorder — Sub Total 0
 Initial Shut-In 45 Day Standby — Total 1440.65
 Final Flow 30 Accessibility — MP/DST Disc't —
 Final Shut-In 45 Sub Total 1440.65

Approved By _____ Our Representative Cody Bloedorn
 Trilobite Testing Inc. shall not be liable for damaged of any kind of the property or personnel of the one for whom a test is made, or for any loss suffered or sustained, directly or indirectly, through the use of its equipment, or its statements or opinion concerning the results of any test, tools lost or damaged in the hole shall be paid for at cost by the party for whom the test is made.



TRILOBITE TESTING INC.

1515 Commerce Parkway • Hays, Kansas 67601

Test Ticket

NO. 54475

Well Name & No. Delbert Walt Trust #13-2 Test No. 7 Date 10-9-13
 Company H & C Oil Operating Inc Elevation 2562 KB 2556 GL
 Address Po Box 86, Plainville KS, 67663
 Co. Rep / Geo. Marc Downing Rig American Eagle #2
 Location: Sec. 13 Twp. 10s Rge. 26w Co. Sheridan State KS

Interval Tested 4008 - 4034 Zone Tested LKC "K"
 Anchor Length 26' Drill Pipe Run 3992' Mud Wt. 9.1
 Top Packer Depth 4003 Drill Collars Run — Vis 50
 Bottom Packer Depth 4008 Wt. Pipe Run — WL 6.0
 Total Depth 4034 Chlorides 1100 ppm System LCM —

Blow Description IF - B.O.B. in 8 minutes
ISI - Surface return for 7 minutes. Died.
FF - B.O.B. in 11 minutes
FSI - No return

Rec	Feet of	%gas	%oil	%water	%mud
<u>154</u>	<u>640CM</u>	<u>40</u>	<u>50</u>	<u>10</u>	
	<u>496' G.I.P.</u>				

Rec Total 154 BHT 1140 Gravity — API RW — @ — °F Chlorides — ppm

(A) Initial Hydrostatic 2023 Test 1050 T-On Location 7:02 pm
 (B) First Initial Flow 10 Jars — T-Started 7:25 pm
 (C) First Final Flow 28 Safety Joint — T-Open 8:52 pm
 (D) Initial Shut-In 852 Circ Sub — T-Pulled 11:22 pm
 (E) Second Initial Flow — Hourly Standby — T-Out 1:05 am
 (F) Second Final Flow — Mileage 123 RT 190.65 Comments —
 (G) Final Shut-In — Sampler —
 (H) Final Hydrostatic 1943 Straddle — Ruined Shale Packer —
 Shale Packer — Ruined Packer —
 Extra Packer — Extra Copies —
 Extra Recorder — Sub Total 0
 Day Standby — Total 1240.65
 Accessibility — MP/DST Disc't —
 Sub Total 1240.65

Approved By _____ Our Representative Cody Black

Trilobite Testing Inc. shall not be liable for damaged of any kind of the property or personnel of the one for whom a test is made, or for any loss suffered or sustained, directly or indirectly, through the use of its equipment, or its statements or opinion concerning the results of any test, tools lost or damaged in the hole shall be paid for at cost by the party for whom the test is made.