



DRILL STEM TEST REPORT

Prepared For: **American Warrior Inc**

PO Box 399
Garden City KS 67846

ATTN: Cecil O'Brate, Kevin

Kramer #3-31

31-24s-29w Gray,KS

Start Date: 2013.10.07 @ 03:50:25

End Date: 2013.10.07 @ 10:16:12

Job Ticket #: 54823 DST #: 1

Trilobite Testing, Inc

PO Box 362 Hays, KS 67601

ph: 785-625-4778 fax: 785-625-5620

Printed: 2013.10.09 @ 14:06:41



TRILOBITE TESTING, INC.

DRILL STEM TEST REPORT

American Warrior Inc
 PO Box 399
 Garden City KS 67846
 ATTN: Cecil O'Brate, Kevin

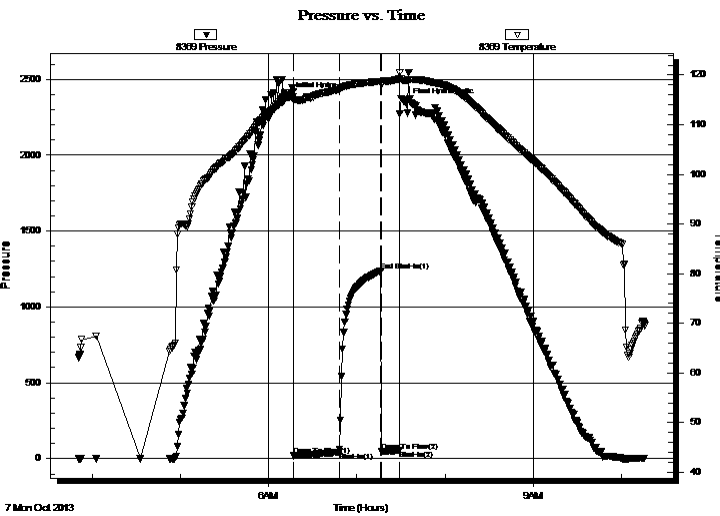
31-24s-29w Gray, KS
Kramer #3-31
 Job Ticket: 54823 **DST#: 1**
 Test Start: 2013.10.07 @ 03:50:25

GENERAL INFORMATION:

Formation: **Ft. Scott**
 Deviated: No Whipstock: ft (KB)
 Test Type: Conventional Bottom Hole (Initial)
 Time Tool Opened: 06:16:50 Tester: Ray Schwager
 Time Test Ended: 10:16:12 Unit No: 70
 Interval: **4715.00 ft (KB) To 4750.00 ft (KB) (TVD)** Reference Elevations: 2835.00 ft (KB)
 Total Depth: 4750.00 ft (KB) (TVD) 2824.00 ft (CF)
 Hole Diameter: 7.88 inches Hole Condition: Poor KB to GR/CF: 11.00 ft

Serial #: 8369 Inside
 Press @ Run Depth: 43.46 psig @ 4720.00 ft (KB) Capacity: 8000.00 psig
 Start Date: 2013.10.07 End Date: 2013.10.07 Last Calib.: 2013.10.07
 Start Time: 03:50:25 End Time: 10:16:12 Time On Btm: 2013.10.07 @ 06:14:20
 Time Off Btm: 2013.10.07 @ 07:33:35

TEST COMMENT: 30-IFP-w k surface bl thru-out
 30-ISIP-no bl
 10-FFP-no bl , pulled tool



PRESSURE SUMMARY

Time (Min.)	Pressure (psig)	Temp (deg F)	Annotation
0	2384.61	115.50	Initial Hydro-static
3	19.77	114.98	Open To Flow (1)
34	43.46	117.13	Shut-In(1)
62	1236.25	118.72	End Shut-In(1)
63	47.35	118.03	Open To Flow (2)
75	55.34	119.20	Shut-In(2)
80	2349.42	118.91	Final Hydro-static

Recovery

Length (ft)	Description	Volume (bbl)
65.00	MW 30%M70%W	0.32

Gas Rates

Choke (inches)	Pressure (psig)	Gas Rate (Mcf/d)



**TRILOBITE
TESTING, INC.**

DRILL STEM TEST REPORT

TOOL DIAGRAM

American Warrior Inc

31-24s-29w Gray,KS

PO Box 399
Garden City KS 67846

Kramer #3-31

Job Ticket: 54823

DST#: 1

ATTN: Cecil O'Brate, Kevin

Test Start: 2013.10.07 @ 03:50:25

Tool Information

Drill Pipe:	Length: 4397.00 ft	Diameter: 3.80 inches	Volume: 61.68 bbl	Tool Weight:	2200.00 lb
Heavy Wt. Pipe:	Length: 0.00 ft	Diameter: 0.00 inches	Volume: 0.00 bbl	Weight set on Packer:	25000.00 lb
Drill Collar:	Length: 310.00 ft	Diameter: 2.25 inches	Volume: 1.52 bbl	Weight to Pull Loose:	90000.00 lb
			<u>Total Volume: 63.20 bbl</u>	Tool Chased	0.00 ft
Drill Pipe Above KB:	20.00 ft			String Weight: Initial	75000.00 lb
Depth to Top Packer:	4715.00 ft			Final	75000.00 lb
Depth to Bottom Packer:	ft				
Interval between Packers:	35.00 ft				
Tool Length:	63.00 ft				
Number of Packers:	2	Diameter: 6.75 inches			

Tool Comments:

Tool Description	Length (ft)	Serial No.	Position	Depth (ft)	Accum. Lengths
------------------	-------------	------------	----------	------------	----------------

Change Over Sub	1.00			4688.00	
Shut In Tool	5.00			4693.00	
Hydraulic tool	5.00			4698.00	
Jars	5.00			4703.00	
Safety Joint	2.00			4705.00	
Packer	5.00			4710.00	28.00 Bottom Of Top Packer
Packer	5.00			4715.00	
Stubb	1.00			4716.00	
Perforations	4.00			4720.00	
Recorder	0.00	8369	Inside	4720.00	
Recorder	0.00	8700	Outside	4720.00	
Perforations	27.00			4747.00	
Bullnose	3.00			4750.00	35.00 Bottom Packers & Anchor

Total Tool Length: 63.00



**TRILOBITE
TESTING, INC.**

DRILL STEM TEST REPORT

FLUID SUMMARY

American Warrior Inc

31-24s-29w Gray,KS

PO Box 399
Garden City KS 67846

Kramer #3-31

Job Ticket: 54823

DST#: 1

ATTN: Cecil O'Brate, Kevin

Test Start: 2013.10.07 @ 03:50:25

Mud and Cushion Information

Mud Type: Gel Chem

Cushion Type:

Oil API:

deg API

Mud Weight: 10.00 lb/gal

Cushion Length:

ft

Water Salinity:

40000 ppm

Viscosity: 48.00 sec/qt

Cushion Volume:

bbf

Water Loss: 7.93 in³

Gas Cushion Type:

Resistivity: ohm.m

Gas Cushion Pressure:

psig

Salinity: 4000.00 ppm

Filter Cake: 1.00 inches

Recovery Information

Recovery Table

Length ft	Description	Volume bbf
65.00	MW 30%M70%W	0.320

Total Length: 65.00 ft Total Volume: 0.320 bbf

Num Fluid Samples: 0

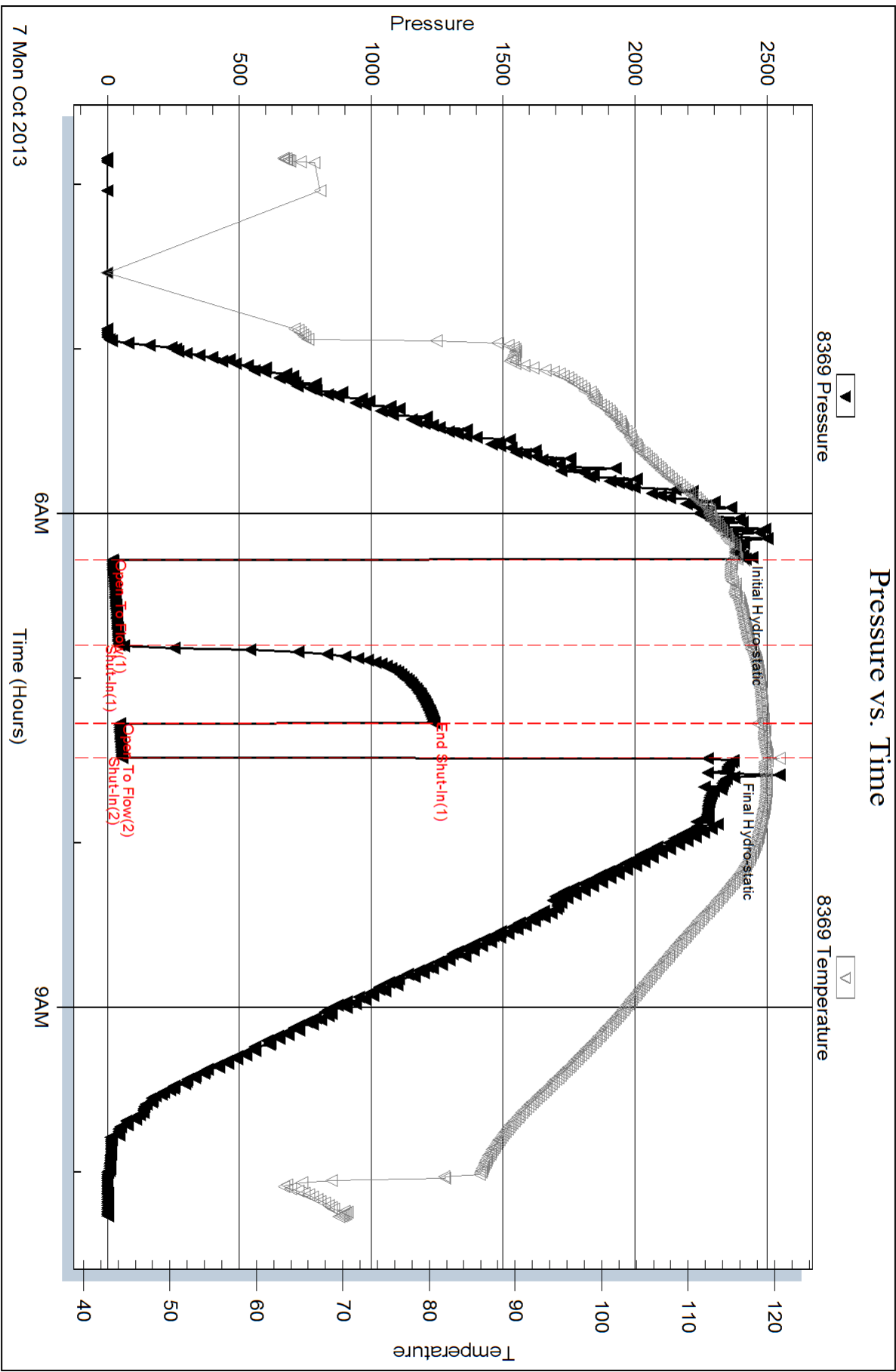
Num Gas Bombs: 0

Serial #:

Laboratory Name:

Laboratory Location:

Recovery Comments: RW .2@60F

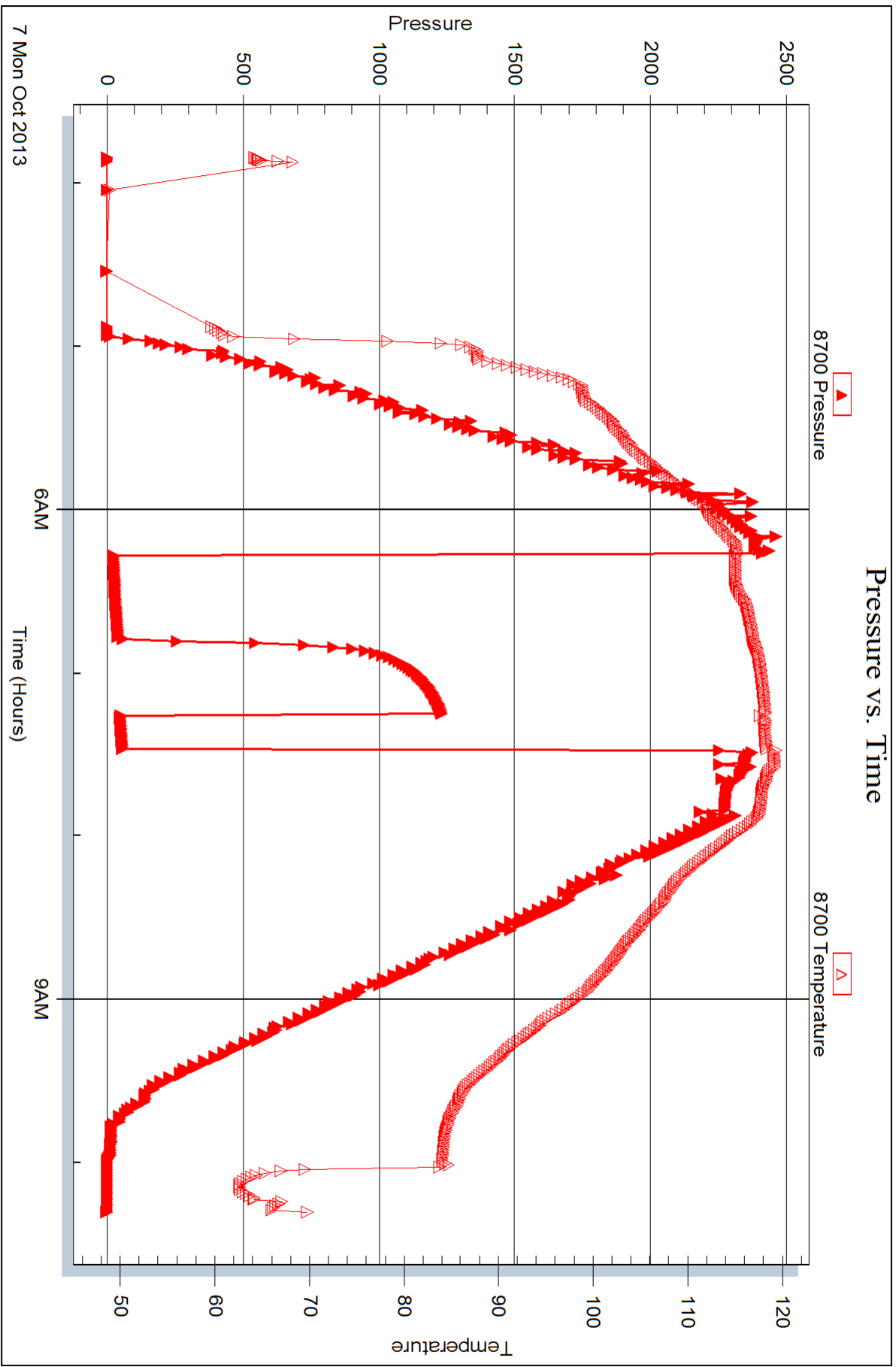


Serial #: 8700

Outside American Warrior Inc

Kramer #3-31

DST Test Number: 1



Trilobite Testing, Inc

Ref. No: 54823

Printed: 2013.10.09 @ 14:06:43



DRILL STEM TEST REPORT

Prepared For: **American Warrior Inc**

PO Box 399
Garden City KS 67846

ATTN: Cecil O'Brate, Kevin

Kramer #3-31

31-24s-29w Gray,KS

Start Date: 2013.10.08 @ 14:50:10

End Date: 2013.10.08 @ 21:22:49

Job Ticket #: 54824 DST #: 2

Trilobite Testing, Inc

PO Box 362 Hays, KS 67601

ph: 785-625-4778 fax: 785-625-5620

Printed: 2013.10.09 @ 14:06:02



TRILOBITE TESTING, INC.

DRILL STEM TEST REPORT

American Warrior Inc
 PO Box 399
 Garden City KS 67846
 ATTN: Cecil O'Brate, Kevin

31-24s-29w Gray, KS
Kramer #3-31
 Job Ticket: 54824 **DST#: 2**
 Test Start: 2013.10.08 @ 14:50:10

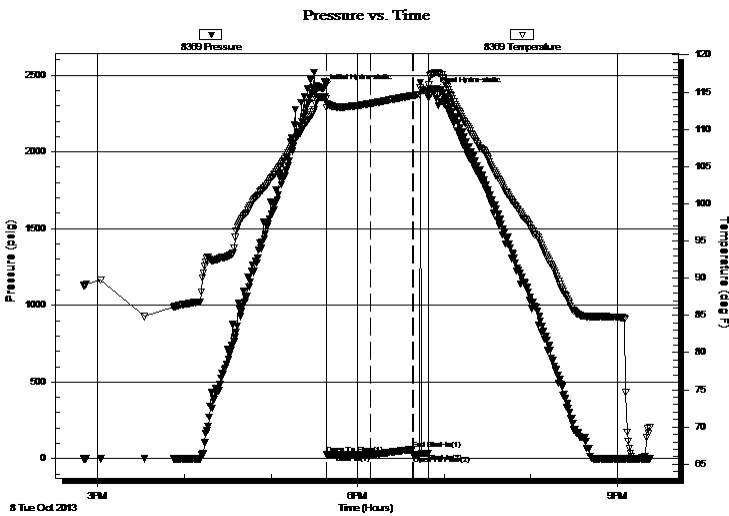
GENERAL INFORMATION:

Formation: **Morrow**
 Deviated: No Whipstock: ft (KB)
 Test Type: Conventional Bottom Hole (Reset)
 Time Tool Opened: 17:38:35
 Tester: Ray Schwager
 Time Test Ended: 21:22:49
 Unit No: 70
Interval: 4840.00 ft (KB) To 4902.00 ft (KB) (TVD)
 Reference Elevations: 2835.00 ft (KB)
 Total Depth: 4902.00 ft (KB) (TVD) 2824.00 ft (CF)
 Hole Diameter: 7.88 inches Hole Condition: Poor KB to GR/CF: 11.00 ft

Serial #: 8369 Inside
 Press @ Run Depth: 25.53 psig @ 4842.00 ft (KB) Capacity: 8000.00 psig
 Start Date: 2013.10.08 End Date: 2013.10.08 Last Calib.: 2013.10.08
 Start Time: 14:50:10 End Time: 21:22:49 Time On Btm: 2013.10.08 @ 17:36:05
 Time Off Btm: 2013.10.08 @ 18:52:20

TEST COMMENT: 30-IFP-w k surface bl , died in 20 min
 30-ISIP-no bl
 10-FFP-no bl , flushed tool , got surge pulled tool

PRESSURE SUMMARY



Time (Min.)	Pressure (psig)	Temp (deg F)	Annotation
0	2413.92	114.37	Initial Hydro-static
3	25.92	112.95	Open To Flow (1)
33	25.53	113.47	Shut-In(1)
62	61.08	114.54	End Shut-In(1)
63	23.69	114.55	Open To Flow (2)
73	35.22	115.16	Shut-In(2)
77	2392.99	117.51	Final Hydro-static

Recovery

Length (ft)	Description	Volume (bbl)
10.00	SOCM 1%O99%M	0.05

* Recovery from multiple tests

Gas Rates

Choke (inches)	Pressure (psig)	Gas Rate (Mcf/d)



**TRILOBITE
TESTING, INC.**

DRILL STEM TEST REPORT

TOOL DIAGRAM

American Warrior Inc

31-24s-29w Gray,KS

PO Box 399
Garden City KS 67846

Kramer #3-31

Job Ticket: 54824

DST#: 2

ATTN: Cecil O'Brate, Kevin

Test Start: 2013.10.08 @ 14:50:10

Tool Information

Drill Pipe:	Length: 4520.00 ft	Diameter: 3.80 inches	Volume: 63.40 bbl	Tool Weight: 2200.00 lb
Heavy Wt. Pipe:	Length: 0.00 ft	Diameter: 0.00 inches	Volume: 0.00 bbl	Weight set on Packer: 25000.00 lb
Drill Collar:	Length: 310.00 ft	Diameter: 2.25 inches	Volume: 1.52 bbl	Weight to Pull Loose: 90000.00 lb
			<u>Total Volume: 64.92 bbl</u>	Tool Chased 0.00 ft
Drill Pipe Above KB:	18.00 ft			String Weight: Initial 76000.00 lb
Depth to Top Packer:	4840.00 ft			Final 76000.00 lb
Depth to Bottom Packer:	ft			
Interval between Packers:	62.00 ft			
Tool Length:	90.00 ft			
Number of Packers:	2	Diameter: 6.75 inches		

Tool Comments:

Tool Description

Tool Description	Length (ft)	Serial No.	Position	Depth (ft)	Accum. Lengths
Change Over Sub	1.00			4813.00	
Shut In Tool	5.00			4818.00	
Hydraulic tool	5.00			4823.00	
Jars	5.00			4828.00	
Safety Joint	2.00			4830.00	
Packer	5.00			4835.00	28.00 Bottom Of Top Packer
Packer	5.00			4840.00	
Stubb	1.00			4841.00	
Perforations	1.00			4842.00	
Recorder	0.00	8369	Inside	4842.00	
Recorder	0.00	8700	Outside	4842.00	
Blank Spacing	33.00			4875.00	
Perforations	24.00			4899.00	
Bullnose	3.00			4902.00	62.00 Bottom Packers & Anchor

Total Tool Length: 90.00



**TRILOBITE
TESTING, INC.**

DRILL STEM TEST REPORT

FLUID SUMMARY

American Warrior Inc

31-24s-29w Gray,KS

PO Box 399
Garden City KS 67846

Kramer #3-31

Job Ticket: 54824

DST#: 2

ATTN: Cecil O'Brate, Kevin

Test Start: 2013.10.08 @ 14:50:10

Mud and Cushion Information

Mud Type: Gel Chem

Cushion Type:

Oil API:

deg API

Mud Weight: 9.00 lb/gal

Cushion Length:

ft

Water Salinity:

ppm

Viscosity: 50.00 sec/qt

Cushion Volume:

bbbl

Water Loss: 10.76 in³

Gas Cushion Type:

Resistivity: ohm.m

Gas Cushion Pressure:

psig

Salinity: 4700.00 ppm

Filter Cake: 1.00 inches

Recovery Information

Recovery Table

Length ft	Description	Volume bbl
10.00	SOCM 1%O99%M	0.049

Total Length: 10.00 ft Total Volume: 0.049 bbl

Num Fluid Samples: 0

Num Gas Bombs: 0

Serial #:

Laboratory Name:

Laboratory Location:

Recovery Comments:

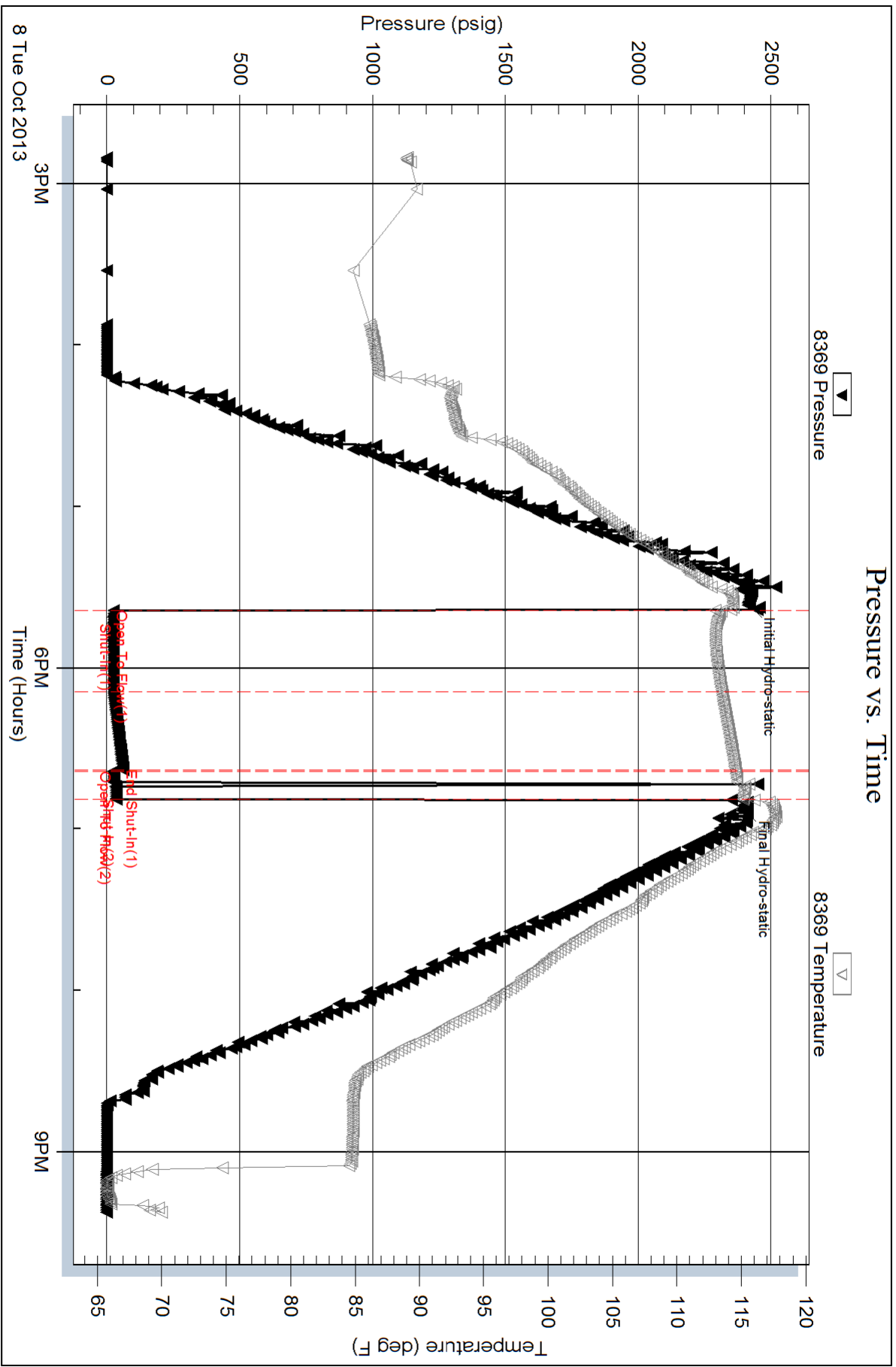
Serial #: 8369

Inside

American Warrior Inc

Kramer #3-31

DST Test Number: 2



Triobite Testing, Inc

Ref. No: 54824

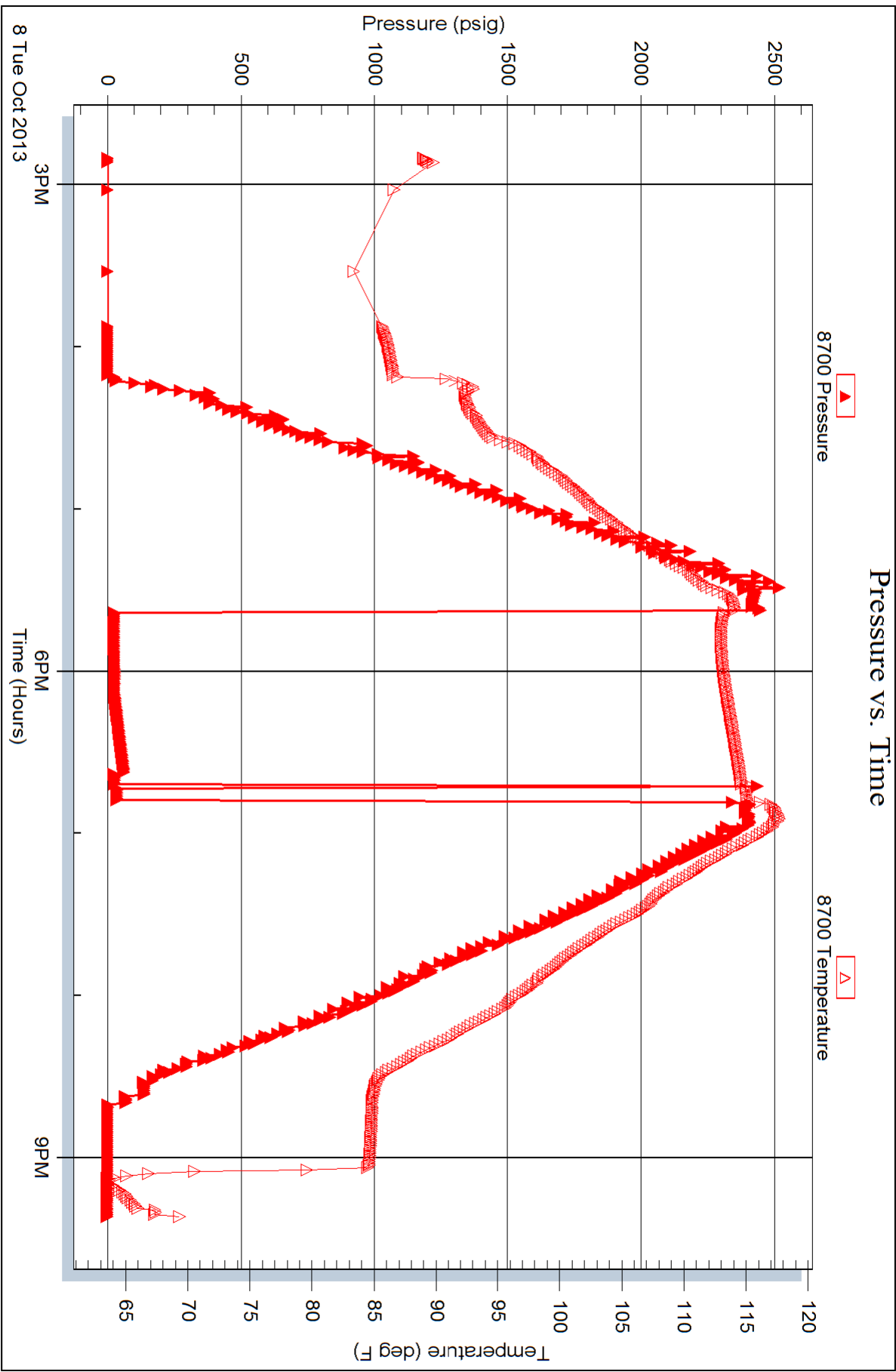
Printed: 2013.10.09 @ 14:06:04

Serial #: 8700

Outside American Warrior Inc

Kramer #3-31

DST Test Number: 2





TRILOBITE TESTING INC.

1515 Commerce Parkway • Hays, Kansas 67601

Test Ticket

NO. 54823

Well Name & No. KRAMER #3-31 Test No. 1 Date 10-7-13
 Company AMERICAN WARRIOR INC Elevation 2835 KB 2824 GL
 Address 3118 Cummings Rd, PO. Box 399 Garden City, Ks 67846
 Co. Rep / Geo. Kevin Timson Rig Duke rig 5
 Location: Sec. 31 Twp. 24^s Rge. 29^N Co. GRAY State Ks

Interval Tested 4715-4750 Zone Tested FT. SCOTT
 Anchor Length 35 Drill Pipe Run 4397 Mud Wt. 9.5
 Top Packer Depth 4710 Drill Collars Run 310 Vis 48
 Bottom Packer Depth 4715 Wt. Pipe Run — WL 8
 Total Depth 4750 Chlorides 4000 ppm System LCM 2#
 Blow Description IFP - WEAK SURFACE BLOW THRU-OUT
ISIP - NO BLOW
FFP - NO BLOW

Rec	Feet of	%gas	%oil	%water	%mud
<u>65</u>	<u>MW</u>			<u>70</u>	<u>30</u>
Rec	Feet of	%gas	%oil	%water	%mud
Rec	Feet of	%gas	%oil	%water	%mud
Rec	Feet of	%gas	%oil	%water	%mud
Rec	Feet of	%gas	%oil	%water	%mud

Rec Total 65 BHT 119 Gravity — API RW .2 @ 60 ° F Chlorides 40000 ppm
 (A) Initial Hydrostatic 2384 Test 1250 T-On Location 0150
 (B) First Initial Flow 19 Jars 250 T-Started 0350
 (C) First Final Flow 43 Safety Joint 75 T-Open 0615
 (D) Initial Shut-In 1236 Circ Sub T-Pulled 0725
 (E) Second Initial Flow 47 Hourly Standby T-Out 1016
 (F) Second Final Flow 55 Mileage 262 RT 126rt 195.30 Comments MOTEL STAY
 (G) Final Shut-In — Sampler Ruined Shale Packer
 (H) Final Hydrostatic 2349 Straddle Ruined Packer
 Shale Packer Extra Copies
 Extra Packer Sub Total 0
 Extra Recorder Total 1770.30
 Day Standby MP/DST Disc't
 Accessibility Sub Total 1770.30

Initial Open 30
 Initial Shut-In 30
 Final Flow 10
 Final Shut-In pulled tool

Approved By _____ Our Representative RAY SCHWAGER Thank you

Trilobite Testing Inc. shall not be liable for damaged of any kind of the property or personnel of the one for whom a test is made, or for any loss suffered or sustained, directly or indirectly, through the use of its equipment, or its statements or opinion concerning the results of any test, tools lost or damaged in the hole shall be paid for at cost by the party for whom the test is made.



TRILOBITE TESTING INC.

1515 Commerce Parkway • Hays, Kansas 67601

Test Ticket

NO. 54824

Well Name & No. KRAMER #3-31 Test No. 2 Date 10-8-13
 Company AMERICAN WARRIOR INC Elevation 2835 KB 2824 GL
 Address 3118 Cummings Rd. P.O. Box 399 Garden City, Ks 67846
 Co. Rep / Geo. Kevin Timson Rig Duke rig 5
 Location: Sec. 31 Twp. 24^s Rge. 29^w Co. GRAY State Ks

Interval Tested 4840-4902 Zone Tested MORROW
 Anchor Length 62 Drill Pipe Run 4520 Mud Wt. 9.4
 Top Packer Depth 4835 Drill Collars Run 310 Vis 50
 Bottom Packer Depth 4840 Wt. Pipe Run — WL 10.8
 Total Depth 4902 Chlorides 4700 ppm System LCM 3#
 Blow Description IFP - WEAK SURFACE BLOW, died in 20 min.
ISTP - NO Blow
FFP - NO Blow, flushed Tool, got surge

Rec	Feet of	%gas	%oil	%water	%mud
<u>10</u>	<u>50 CM</u>	<u>1</u>		<u>99</u>	
Rec	Feet of	%gas	%oil	%water	%mud
Rec	Feet of	%gas	%oil	%water	%mud
Rec	Feet of	%gas	%oil	%water	%mud
Rec	Feet of	%gas	%oil	%water	%mud

Rec Total 10 BHT 117 Gravity — API RW — @ — ° F Chlorides — ppm

(A) Initial Hydrostatic <u>2413</u>	<input checked="" type="checkbox"/> Test 1250	T-On Location <u>1230</u>
(B) First Initial Flow <u>25</u>	<input checked="" type="checkbox"/> Jars 250	T-Started <u>1450</u>
(C) First Final Flow <u>25</u>	<input checked="" type="checkbox"/> Safety Joint 75	T-Open <u>1740</u>
(D) Initial Shut-In <u>61</u>	<input type="checkbox"/> Circ Sub	T-Pulled <u>1850</u>
(E) Second Initial Flow <u>23</u>	<input type="checkbox"/> Hourly Standby	T-Out <u>2220</u>
(F) Second Final Flow <u>35</u>	<input checked="" type="checkbox"/> Mileage 195.30	Comments <u>MOTEL STAY</u>
(G) Final Shut-In <u>—</u>	<input type="checkbox"/> Sampler	
(H) Final Hydrostatic <u>2392</u>	<input type="checkbox"/> Straddle	<input type="checkbox"/> Ruined Shale Packer
Initial Open <u>30</u>	<input type="checkbox"/> Shale Packer	<input type="checkbox"/> Ruined Packer
Initial Shut-In <u>30</u>	<input type="checkbox"/> Extra Packer	<input type="checkbox"/> Extra Copies
Final Flow <u>10</u>	<input type="checkbox"/> Extra Recorder	Sub Total <u>0</u>
Final Shut-In <u>pulled Tool</u>	<input type="checkbox"/> Day Standby	Total <u>1770.30</u>
	<input type="checkbox"/> Accessibility	MP/DST Disc't
	Sub Total <u>1770.30</u>	

Approved By _____ Our Representative RAY SCHWAGER Thank you

Trilobite Testing Inc. shall not be liable for damaged of any kind of the property or personnel of the one for whom a test is made, or for any loss suffered or sustained, direct or indirectly, through the use of its equipment, or its statements or opinion concerning the results of any test, tools lost or damaged in the hole shall be paid for at cost by the party for whom the test is made.