



DRILL STEM TEST REPORT

CAPTIVA ENERGY L.L.C
 2717 CANAL BLVD SUITE C
 HAYS KS 67601
 ATTN: KEITH REAVIS

MEIGS TRUST 1-5

5-29-13

Job Ticket: 16399

DST#: 2

Test Start: 2009.05.31 @ 09:18:51

GENERAL INFORMATION:

Formation: **SIMPSON**
 Deviated: No Whipstock: ft (KB)
 Time Tool Opened: 11:41:51
 Time Test Ended: 16:03:21
 Interval: **4518.00 ft (KB) To 4558.00 ft (KB) (TVD)**
 Total Depth: 4558.00 ft (KB) (TVD)
 Hole Diameter: 7.88 inches Hole Condition: Fair
 Test Type: Conventional Bottom Hole (Initial)
 Tester: DAVID NICHOLS
 Unit No: 3345 114 M GB
 Reference Elevations: 1968.00 ft (KB)
 1956.00 ft (CF)
 KB to GR/CF: 12.00 ft

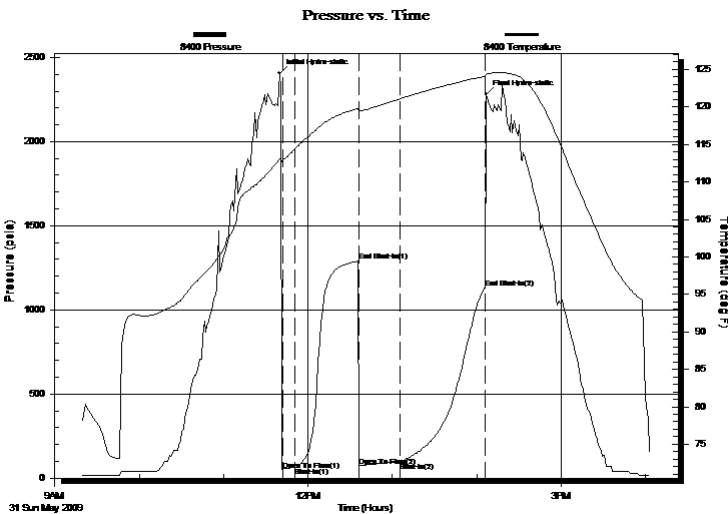
Serial #: 8400

Inside

Press@RunDepth: 96.16 psia @ 4553.00 ft (KB) Capacity: 5000.00 psia
 Start Date: 2009.05.31 End Date: 2009.05.31 Last Calib.: 2009.05.31
 Start Time: 09:18:51 End Time: 16:03:21 Time On Btm: 2009.05.31 @ 11:39:51
 Time Off Btm: 2009.05.31 @ 14:06:51

TEST COMMENT: 10-INITIAL OPENING WEAK BLOW BUILT TO 1 1/2 INTO WATER
 45-INITIAL SHUT IN NO BLOW BACK
 30-FINAL OPENING WEAK BLOW BUILT TO 2 1/2 INCHES INTO WATER
 60-FINAL SHUT IN NO BLOW BACK

PRESSURE SUMMARY



Time (Min.)	Pressure (psia)	Temp (deg F)	Annotation
0	2406.43	113.09	Initial Hydro-static
2	49.73	112.89	Open To Flow (1)
11	62.51	114.40	Shut-In(1)
56	1289.73	119.83	End Shut-In(1)
57	73.22	119.41	Open To Flow (2)
86	96.16	121.09	Shut-In(2)
146	1127.73	124.05	End Shut-In(2)
147	2281.23	124.36	Final Hydro-static

Recovery

Length (ft)	Description	Volume (bbl)
80.00	mud w with a slight show of oil 1% O 99% M	0.39

Gas Rates

Choke (inches)	Pressure (psia)	Gas Rate (Mcf/d)



DRILL STEM TEST REPORT

CAPTIVA ENERGY L.L.C
 2717 CANAL BLVD SUITE C
 HAYS KS 67601
 ATTN: KEITH REAVIS

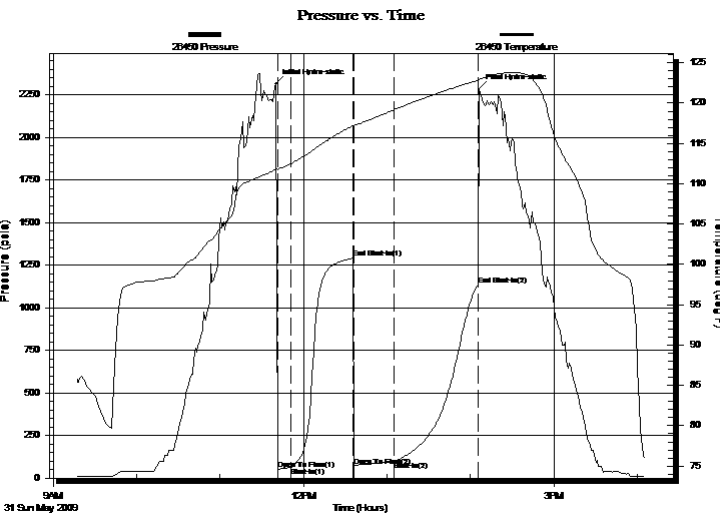
MEIGS TRUST 1-5
5-29-13
 Job Ticket: 16399 **DST#: 2**
 Test Start: 2009.05.31 @ 09:18:51

GENERAL INFORMATION:

Formation: **SIMPSON**
 Deviated: No Whipstock: ft (KB)
 Test Type: Conventional Bottom Hole (Initial)
 Time Tool Opened: 11:41:51 Tester: DAVID NICHOLS
 Time Test Ended: 16:03:21 Unit No: 3345 114 M GB
 Interval: **4518.00 ft (KB) To 4558.00 ft (KB) (TVD)** Reference Elevations: 1968.00 ft (KB)
 Total Depth: 4558.00 ft (KB) (TVD) 1956.00 ft (CF)
 Hole Diameter: 7.88 inches Hole Condition: Fair KB to GR/CF: 12.00 ft

Serial #: 26450 Outside
 Press@RunDepth: 1133.25 psia @ 4553.00 ft (KB) Capacity: 5000.00 psia
 Start Date: 2009.05.31 End Date: 2009.05.31 Last Calib.: 2009.05.31
 Start Time: 09:17:37 End Time: 16:05:48 Time On Btm: 2009.05.31 @ 11:40:18
 Time Off Btm: 2009.05.31 @ 14:06:19

TEST COMMENT: 10-INITIAL OPENING WEAK BLOW BUILT TO 1 1/2 INTO WATER
 45-INITIAL SHUT IN NO BLOW BACK
 30-FINAL OPENING WEAK BLOW BUILT TO 2 1/2 INCHES INTO WATER
 60-FINAL SHUT IN NO BLOW BACK



PRESSURE SUMMARY

Time (Min.)	Pressure (psia)	Temp (deg F)	Annotation
0	2312.52	111.82	Initial Hydro-static
2	49.22	111.74	Open To Flow (1)
11	62.06	112.48	Shut-In(1)
56	1289.32	117.19	End Shut-In(1)
57	72.21	117.18	Open To Flow (2)
86	96.99	119.18	Shut-In(2)
146	1133.25	122.83	End Shut-In(2)
147	2283.54	122.95	Final Hydro-static

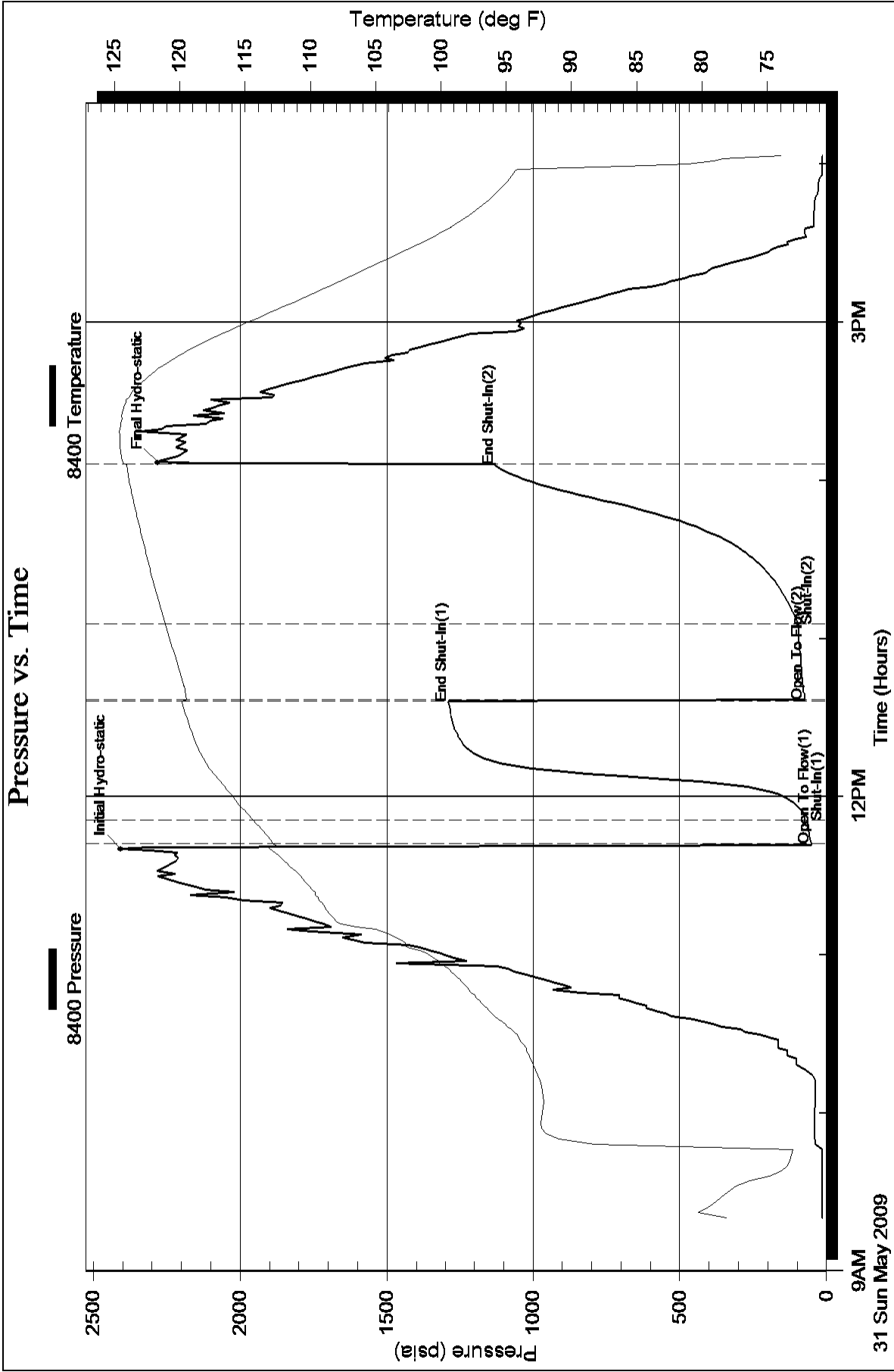
Recovery

Length (ft)	Description	Volume (bbl)
80.00	mud w with a slight show of oil 1% O 99% M	0.39

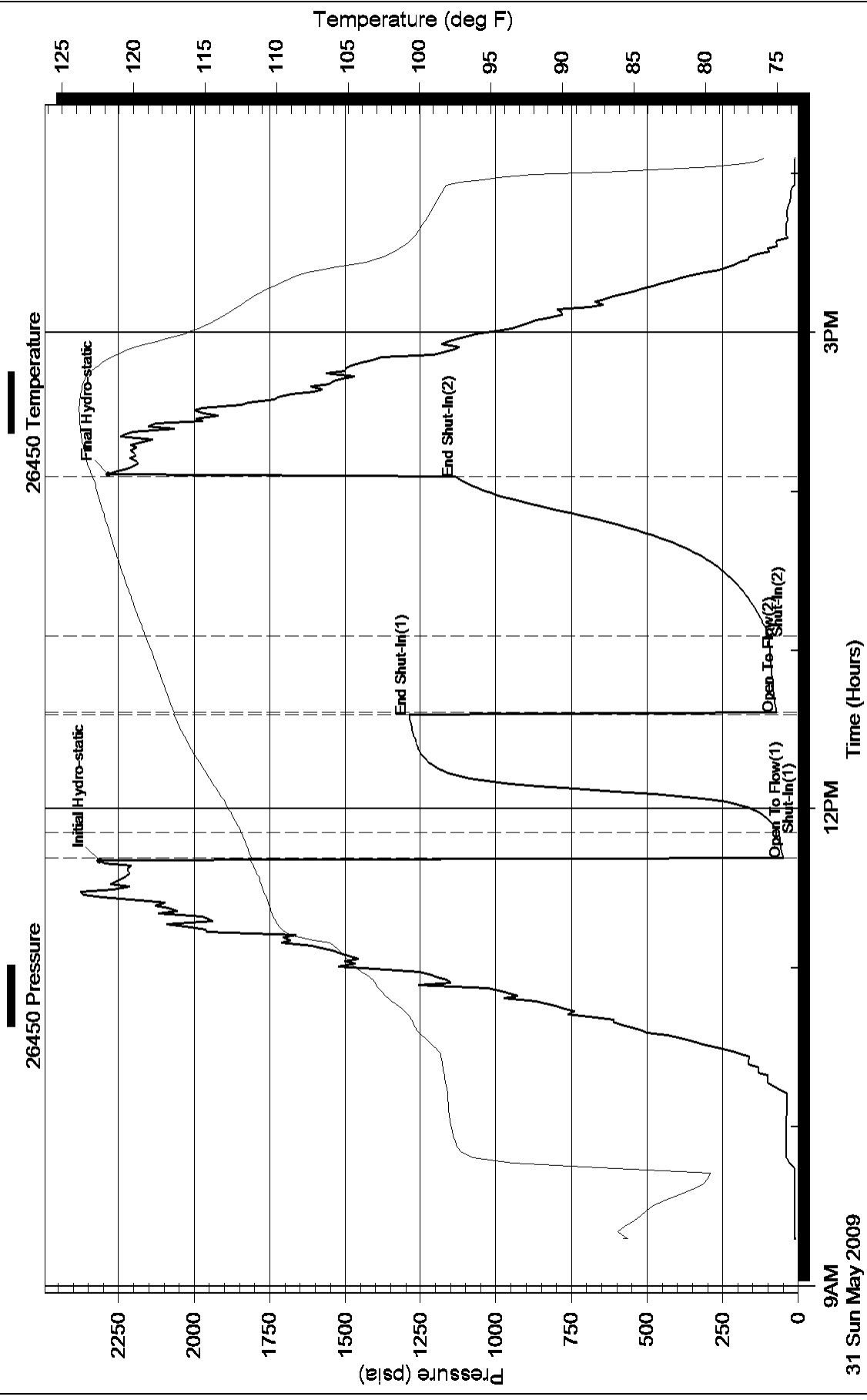
Gas Rates

Choke (inches)	Pressure (psia)	Gas Rate (Mcf/d)

Pressure vs. Time



Pressure vs. Time



9AM
31 Sun May 2009

3PM

12PM
Time (Hours)