



DRILL STEM TEST REPORT

Prepared For: **Chieftain Oil Co. Inc.**

PO Box 124
Kiowa KS 67070

ATTN: Arden Ratzlaff

Lorraine C #2

27-33s-11w Barber,KS

Start Date: 2013.10.18 @ 12:07:29

End Date: 2013.10.18 @ 20:00:29

Job Ticket #: 52363 DST #: 1

Trilobite Testing, Inc

PO Box 362 Hays, KS 67601

ph: 785-625-4778 fax: 785-625-5620

Printed: 2013.10.21 @ 15:43:52



TRILOBITE TESTING, INC.

DRILL STEM TEST REPORT

Chieftain Oil Co. Inc.

27-33s-11w Barber, KS

PO Box 124
Kiowa KS 67070

Lorraine C #2

Job Ticket: 52363

DST#: 1

ATTN: Arden Ratzlaff

Test Start: 2013.10.18 @ 12:07:29

GENERAL INFORMATION:

Formation: **Miss.**

Deviated: No Whipstock: ft (KB)

Time Tool Opened: 13:49:44

Time Test Ended: 20:00:29

Test Type: Conventional Bottom Hole (Initial)

Tester: Gary Pevoteaux

Unit No: 56

Interval: 4516.00 ft (KB) To 4582.00 ft (KB) (TVD)

Reference Elevations: 1453.00 ft (KB)

Total Depth: 4582.00 ft (KB) (TVD)

1440.00 ft (CF)

Hole Diameter: 7.88 inches Hole Condition: Fair

KB to GR/CF: 13.00 ft

Serial #: 8352 Inside

Press @ Run Depth: 37.20 psig @ 4517.00 ft (KB)

Capacity: 8000.00 psig

Start Date: 2013.10.18

End Date:

2013.10.18

Last Calib.:

2013.10.18

Start Time: 12:07:34

End Time:

20:00:28

Time On Btm:

2013.10.18 @ 13:49:29

Time Off Btm:

2013.10.18 @ 17:31:44

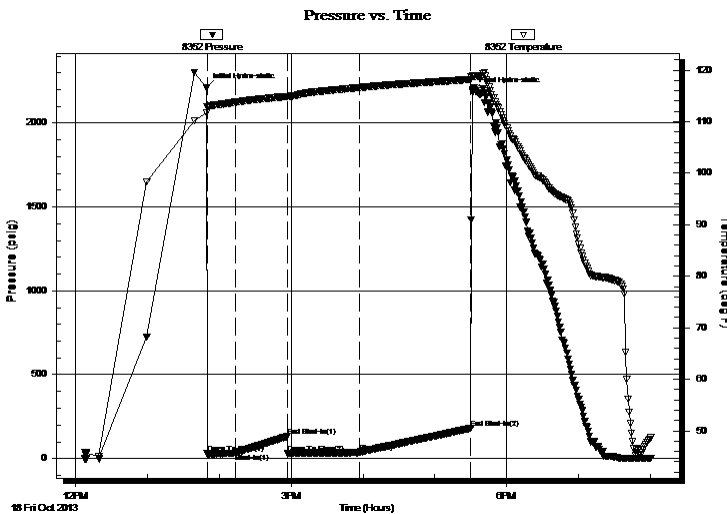
TEST COMMENT: IF:Weak blow . 1/2 - 3 1/2"

IS:No blow .

FF:Weak blow . 1/2 - 4".

FS:No blow .

PRESSURE SUMMARY



Time (Min.)	Pressure (psig)	Temp (deg F)	Annotation
0	2209.60	111.68	Initial Hydro-static
1	28.60	112.84	Open To Flow (1)
24	32.46	113.78	Shut-In(1)
68	131.24	114.91	End Shut-In(1)
68	29.00	114.86	Open To Flow (2)
128	37.20	116.63	Shut-In(2)
221	180.65	118.20	End Shut-In(2)
223	2189.45	118.84	Final Hydro-static

Recovery

Length (ft)	Description	Volume (bbl)
40.00	SGCM 4%g 96%m	0.20
0.00	140 ft. of GIP	0.00

Gas Rates

	Choke (inches)	Pressure (psig)	Gas Rate (Mcf/d)



**TRILOBITE
TESTING, INC.**

DRILL STEM TEST REPORT

TOOL DIAGRAM

Chieftain Oil Co. Inc.

27-33s-11w Barber, KS

PO Box 124
Kiowa KS 67070

Lorraine C #2

Job Ticket: 52363

DST#: 1

ATTN: Arden Ratzlaff

Test Start: 2013.10.18 @ 12:07:29

Tool Information

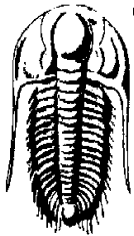
Drill Pipe:	Length: 4367.00 ft	Diameter: 3.80 inches	Volume: 61.26 bbl	Tool Weight: 2400.00 lb
Heavy Wt. Pipe:	Length: 0.00 ft	Diameter: 0.00 inches	Volume: 0.00 bbl	Weight set on Packer: 24000.00 lb
Drill Collar:	Length: 150.00 ft	Diameter: 2.25 inches	Volume: 0.74 bbl	Weight to Pull Loose: 90000.00 lb
			<u>Total Volume: 62.00 bbl</u>	Tool Chased 0.00 ft
Drill Pipe Above KB:	24.00 ft			String Weight: Initial 62000.00 lb
Depth to Top Packer:	4516.00 ft			Final 62000.00 lb
Depth to Bottom Packer:	ft			
Interval between Packers:	66.00 ft			
Tool Length:	89.00 ft			
Number of Packers:	2	Diameter: 6.75 inches		

Tool Comments:

Tool Description	Length (ft)	Serial No.	Position	Depth (ft)	Accum. Lengths
------------------	-------------	------------	----------	------------	----------------

C.O. Sub	1.00			4494.00	
Shut in tool	5.00			4499.00	
Hydraulic tool	5.00			4504.00	
Safety Joint	3.00			4507.00	
Packer	4.00			4511.00	23.00 Bottom Of Top Packer
Packer	5.00			4516.00	
Stubb	1.00			4517.00	
Recorder	0.00	8352	Inside	4517.00	
Recorder	0.00	8370	Outside	4517.00	
Perforations	6.00			4523.00	
Blank Spacing	32.00			4555.00	
Perforations	22.00			4577.00	
Bullnose	5.00			4582.00	66.00 Bottom Packers & Anchor

Total Tool Length: 89.00



**TRILOBITE
TESTING, INC.**

DRILL STEM TEST REPORT

FLUID SUMMARY

Chieftain Oil Co. Inc.

27-33s-11w Barber,KS

PO Box 124
Kiowa KS 67070

Lorraine C #2

Job Ticket: 52363

DST#: 1

ATTN: Arden Ratzlaff

Test Start: 2013.10.18 @ 12:07:29

Mud and Cushion Information

Mud Type: Gel Chem

Cushion Type:

Oil API:

deg API

Mud Weight: 9.00 lb/gal

Cushion Length:

ft

Water Salinity:

3600 ppm

Viscosity: 61.00 sec/qt

Cushion Volume:

bbbl

Water Loss: 6.99 in³

Gas Cushion Type:

Resistivity: 0.00 ohm.m

Gas Cushion Pressure:

psig

Salinity: 3600.00 ppm

Filter Cake: 0.20 inches

Recovery Information

Recovery Table

Length ft	Description	Volume bbbl
40.00	SGCM 4%g 96%m	0.197
0.00	140 ft. of GIP	0.000

Total Length: 40.00 ft Total Volume: 0.197 bbl

Num Fluid Samples: 0

Num Gas Bombs: 0

Serial #: None

Laboratory Name:

Laboratory Location:

Recovery Comments:

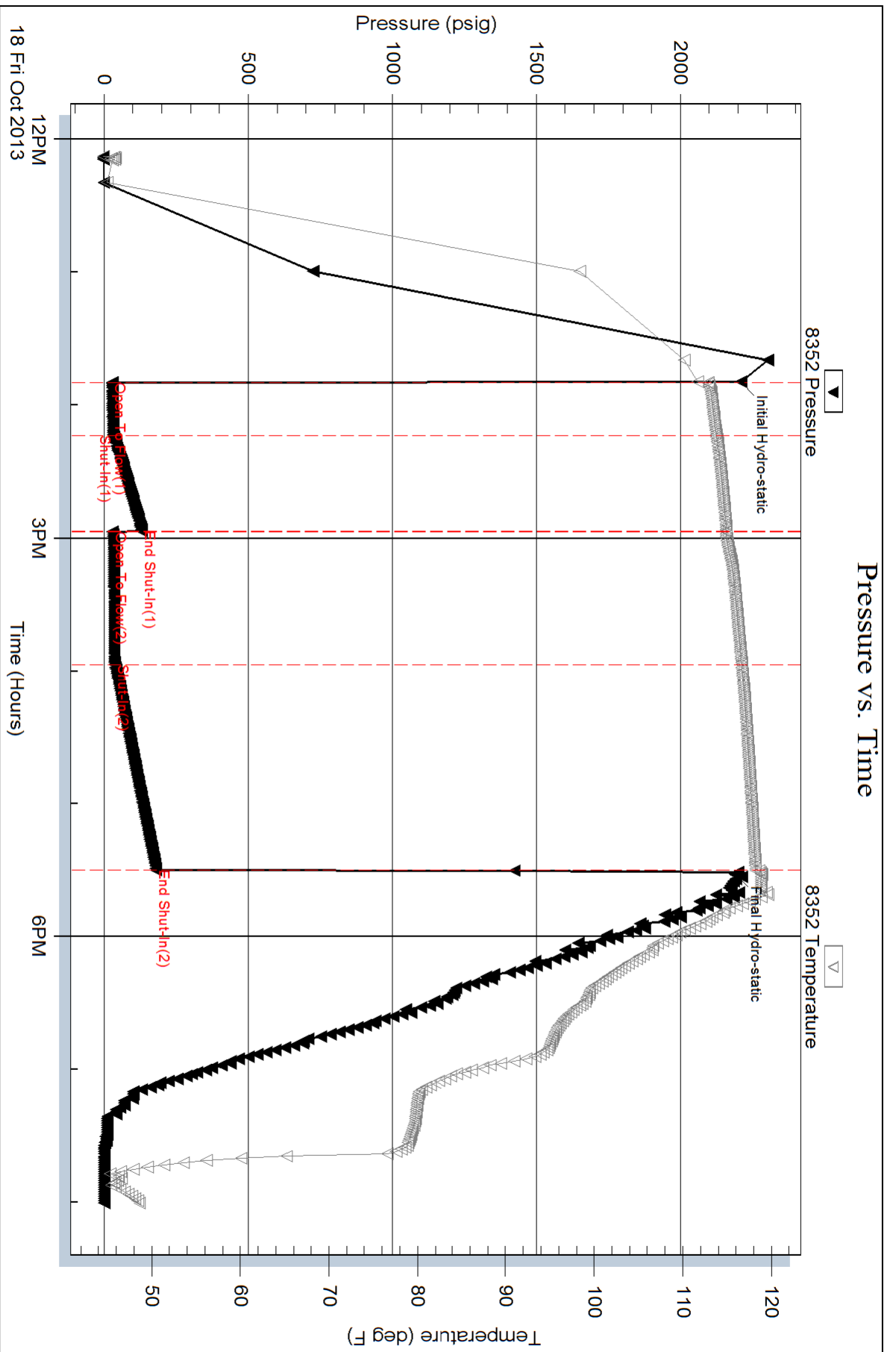
Serial #: 8352

Inside

Chieftain Oil Co. Inc.

Lorraine C#2

DST Test Number: 1



Triobite Testing, Inc

Ref. No: 52363

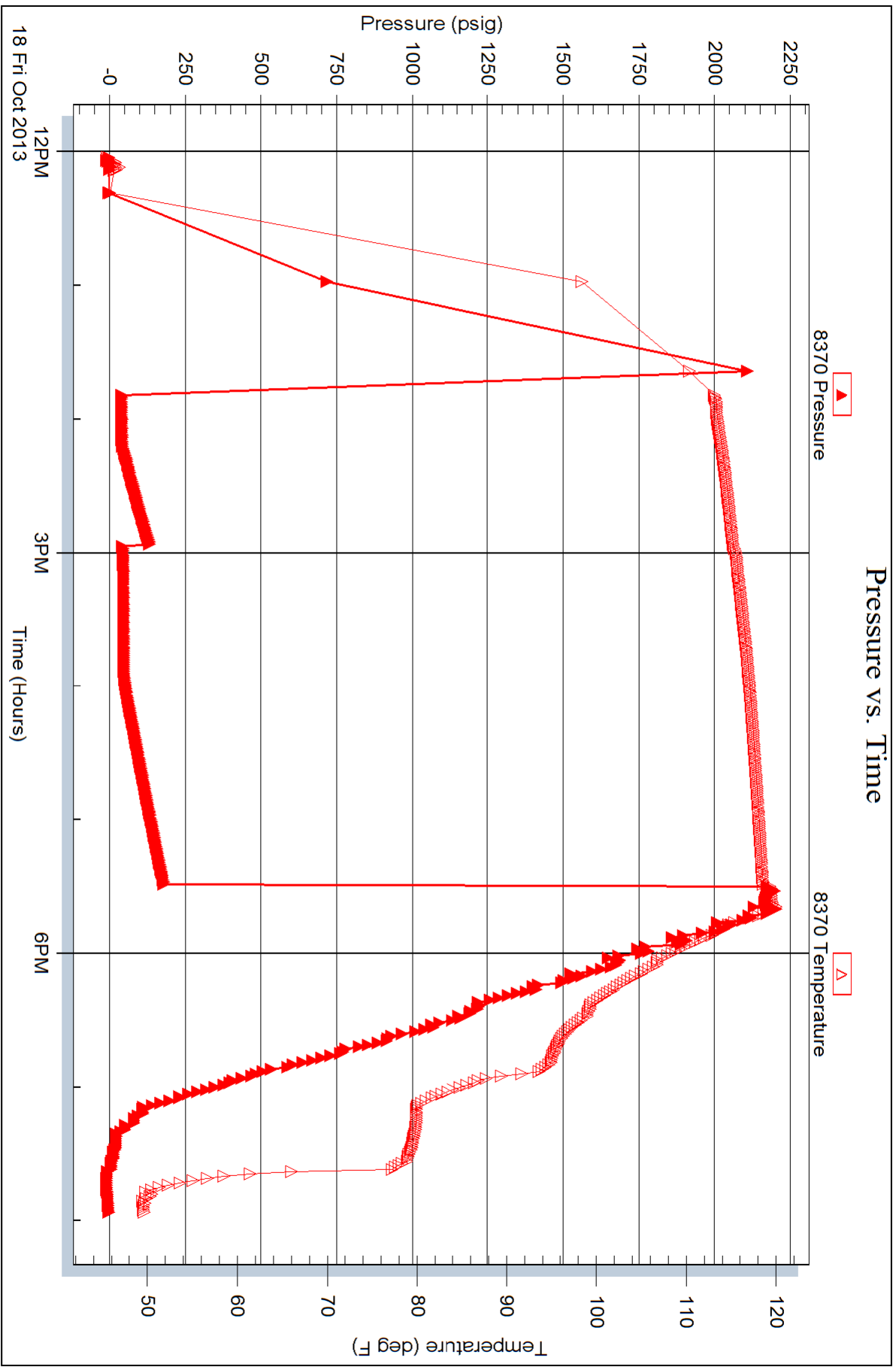
Printed: 2013.10.21 @ 15:43:54

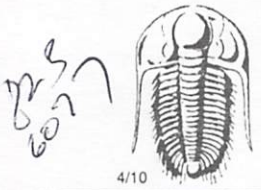
Serial #: 8370

Outside Chieftain Oil Co. Inc.

Lorraine C#2

DST Test Number: 1





TRILOBITE TESTING INC.

1515 Commerce Parkway • Hays, Kansas 67601

Test Ticket

NO. 52363

Well Name & No. LORRAINE C #2 Test No. 1 Date 10-18-13
 Company CHIEFTAIN Oil Co. Inc. Elevation 1453 KB 1440 GL
 Address 1015.5TH ST. P.O. Box 124, Kizona Ks.
 Co. Rep / Geo. ARDEN RATZLAFF Rig Fossil Drill #3
 Location: Sec. 27 Twp. 33^s Rge. 11^w Co. BARBER State Ks.

Interval Tested ~~4516~~ 4516 - 4582' Zone Tested Mess.
 Anchor Length 66' Drill Pipe Run 4367' Mud Wt. 9.2
 Top Packer Depth 4511' Drill Collars Run 150' Vis 61
 Bottom Packer Depth 4516' Wt. Pipe Run 0 WL 7.0 cc
 Total Depth 4582' Chlorides 3600 ppm System LCM 3th
 Blow Description IF: Work blow. 1/2 - 3 1/2" ISI: No blow.

FF: Work blow. 1/2 - 4" FSI: No blow.

Rec	Feet of	%gas	%oil	%water	%mud
<u>140</u>	<u>Feet of Gas in pipe</u>				
<u>40</u>	<u>Feet of SGCM</u>	<u>4</u>			<u>96</u>

Rec Total 40 Fluid BHT 118° Gravity N/A API RW N.C. @ - °F Chlorides 3600 ppm

(A) Initial Hydrostatic <u>2210</u>	<input checked="" type="checkbox"/> Test <u>1250</u>	T-On Location <u>1108</u>
(B) First Initial Flow <u>29</u>	<input type="checkbox"/> Jars	T-Started <u>1207</u>
(C) First Final Flow <u>32</u>	<input checked="" type="checkbox"/> Safety Joint <u>75</u>	T-Open <u>1349</u>
(D) Initial Shut-In <u>131</u>	<input type="checkbox"/> Circ Sub	T-Pulled <u>1725</u>
(E) Second Initial Flow <u>29</u>	<input type="checkbox"/> Hourly Standby	T-Out <u>2000</u>
(F) Second Final Flow <u>37</u>	<input checked="" type="checkbox"/> Mileage <u>(96)</u> <u>297.60</u>	Comments <u>loaded tools 10/20 17:30</u>
(G) Final Shut-In <u>181</u>	<input type="checkbox"/> Sampler	<input type="checkbox"/> Ruined Shale Packer
(H) Final Hydrostatic <u>2189</u>	<input type="checkbox"/> Straddle	<input type="checkbox"/> Ruined Packer
Initial Open <u>30</u>	<input type="checkbox"/> Shale Packer	<input type="checkbox"/> Extra Copies
Initial Shut-In <u>45</u>	<input type="checkbox"/> Extra Packer	Sub Total <u>800</u>
Final Flow <u>60</u>	<input type="checkbox"/> Extra Recorder	Total
Final Shut-In <u>90</u>	<input checked="" type="checkbox"/> Day Standby <u>1 DAY</u> <u>17.5h</u>	MP/DST Disc't
	<input type="checkbox"/> Accessibility	
	Sub Total <u>1622.60</u>	

Approved By Arden Ratzlaff Our Representative Gary P. [Signature]
 TriLOBITE TESTING INC. shall not be liable for damaged of any kind of the property or personnel of the one for whom a test is made, or for any loss suffered or sustained, directly or indirectly, through the use of its equipment, or its statements or opinion concerning the results of any test, tools lost or damaged in the hole shall be paid for at cost by the party for whom the test is made.