



**TRILOBITE
TESTING, INC**

DRILL STEM TEST REPORT

McElvain Energy Inc
1050 17th STE 2500
Denver, Co 80265
ATTN: Rodney Gonzalas

30-10S-21W Graham,KS

Grecian #30-15

Job Ticket: 56085 **DST#: 1**

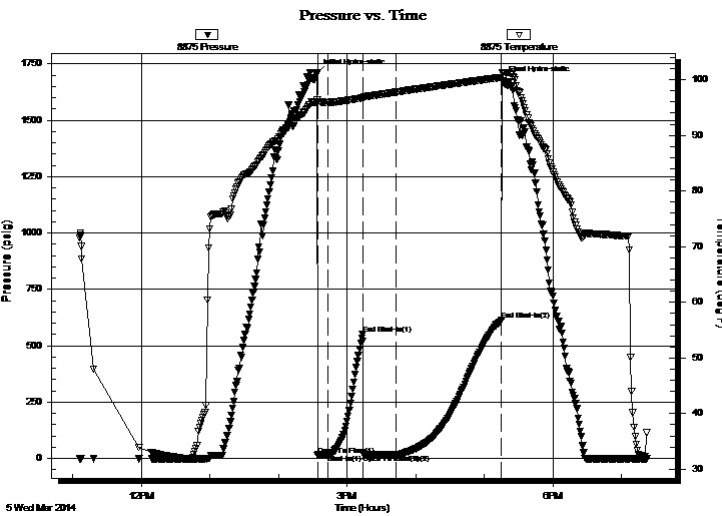
Test Start: 2014.03.05 @ 11:06:00

GENERAL INFORMATION:

Formation: **LKC B-D**
 Deviated: No Whipstock: ft (KB)
 Time Tool Opened: 14:34:00
 Time Test Ended: 19:22:15
 Interval: **3540.00 ft (KB) To 3584.00 ft (KB) (TVD)**
 Total Depth: 3584.00 ft (KB) (TVD)
 Hole Diameter: 7.88 inches Hole Condition: Good
 Test Type: Conventional Bottom Hole (Initial)
 Tester: Tim Phillips
 Unit No: 73
 Reference Elevations: 2229.00 ft (KB)
 2219.00 ft (CF)
 KB to GR/CF: 10.00 ft

Serial #: 8875 Outside
 Press@RunDepth: 16.23 psig @ 3581.00 ft (KB) Capacity: 8000.00 psig
 Start Date: 2014.03.05 End Date: 2014.03.05 Last Calib.: 2014.03.05
 Start Time: 11:06:05 End Time: 19:22:14 Time On Btm: 2014.03.05 @ 14:33:45
 Time Off Btm: 2014.03.05 @ 17:15:45

TEST COMMENT: IFP- Blow built to 3/4 in
 IS-Dead no blow back
 FF-Blow built to 1 1/4 in
 FS- Dead no blow back



PRESSURE SUMMARY

Time (Min.)	Pressure (psig)	Temp (deg F)	Annotation
0	1708.68	96.34	Initial Hydro-static
1	14.13	95.86	Open To Flow (1)
10	16.99	95.92	Shut-In(1)
40	550.44	96.76	End Shut-In(1)
41	20.57	96.64	Open To Flow (2)
70	16.23	97.77	Shut-In(2)
161	613.35	100.40	End Shut-In(2)
162	1675.38	101.31	Final Hydro-static

Recovery

Length (ft)	Description	Volume (bbl)
8.00	SOCM 10% O, 90% M	0.11
2.00	CO 100% O	0.03

Gas Rates

	Choke (inches)	Pressure (psig)	Gas Rate (Mcf/d)



DRILL STEM TEST REPORT

McElvain Energy Inc
1050 17th STE 2500
Denver, Co 80265
ATTN: Rodney Gonzalas

30-10S-21W Graham,KS
Grecian #30-15
Job Ticket: 56085 **DST#: 1**
Test Start: 2014.03.05 @ 11:06:00

GENERAL INFORMATION:

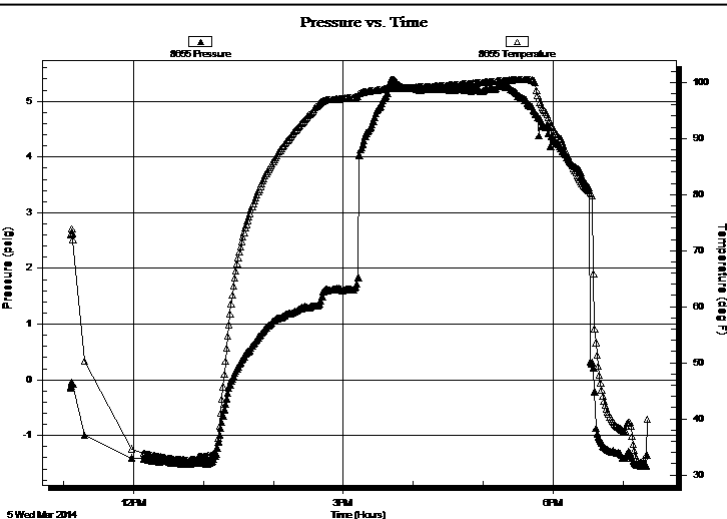
Formation: **LKC B-D**
 Deviated: No Whipstock: ft (KB)
 Time Tool Opened: 14:34:00
 Time Test Ended: 19:22:15
Interval: 3540.00 ft (KB) To 3584.00 ft (KB) (TVD)
 Total Depth: 3584.00 ft (KB) (TVD)
 Hole Diameter: 7.88 inches Hole Condition: Good

Test Type: Conventional Bottom Hole (Initial)
 Tester: Tim Phillips
 Unit No: 73

Reference Elevations: 2229.00 ft (KB)
 2219.00 ft (CF)
 KB to GR/CF: 10.00 ft

Serial #: 8655 Fluid
 Press@RunDepth: psig @ 3506.00 ft (KB) Capacity: 8000.00 psig
 Start Date: 2014.03.05 End Date: 2014.03.05 Last Calib.: 2014.03.05
 Start Time: 11:06:05 End Time: 19:20:44 Time On Btm:
 Time Off Btm:

TEST COMMENT: IFP- Blow built to 3/4 in
 IS-Dead no blow back
 FF-Blow built to 1 1/4 in
 FS- Dead no blow back



PRESSURE SUMMARY

Time (Min.)	Pressure (psig)	Temp (deg F)	Annotation

Recovery

Length (ft)	Description	Volume (bbl)
8.00	SOCM 10% O, 90% M	0.11
2.00	CO 100% O	0.03

Gas Rates

Choke (inches)	Pressure (psig)	Gas Rate (Mcf/d)



**TRILOBITE
TESTING, INC**

DRILL STEM TEST REPORT

FLUID SUMMARY

McElvain Energy Inc
1050 17th STE 2500
Denver, Co 80265
ATTN: Rodney Gonzalas

30-10S-21W Graham,KS
Grecian #30-15
Job Ticket: 56085 **DST#: 1**
Test Start: 2014.03.05 @ 11:06:00

Mud and Cushion Information

Mud Type: Gel Chem	Cushion Type:	Oil API:	deg API
Mud Weight: 9.00 lb/gal	Cushion Length: ft	Water Salinity:	ppm
Viscosity: 47.00 sec/qt	Cushion Volume: bbl		
Water Loss: 6.40 in ³	Gas Cushion Type:		
Resistivity: ohm.m	Gas Cushion Pressure: psig		
Salinity: 1400.00 ppm			
Filter Cake: 1.00 inches			

Recovery Information

Recovery Table

Length ft	Description	Volume bbl
8.00	SOCM 10% O, 90% M	0.112
2.00	CO 100% O	0.028

Total Length: 10.00 ft Total Volume: 0.140 bbl

Num Fluid Samples: 0 Num Gas Bombs: 0 Serial #:

Laboratory Name: Laboratory Location:

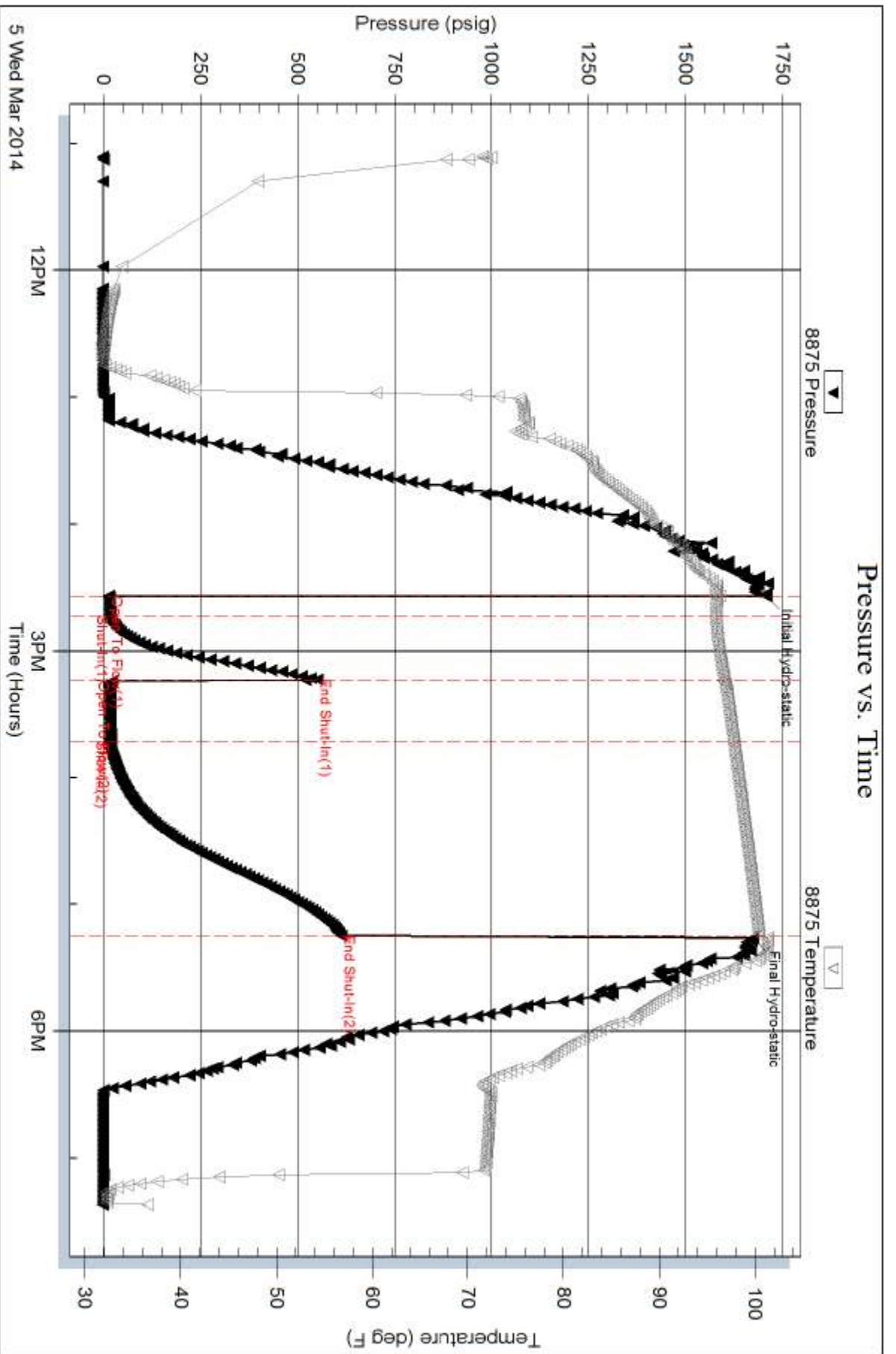
Recovery Comments: Sampler 2500ml of SOCM at 50 psi

Serial #: 8875

Outside McElvain Energy Inc

Greilan #30-15

DST Test Number: 1



Tribble Testing, Inc

Ref. No: 56085

Printed: 2014.03.06 @ 07:45:37

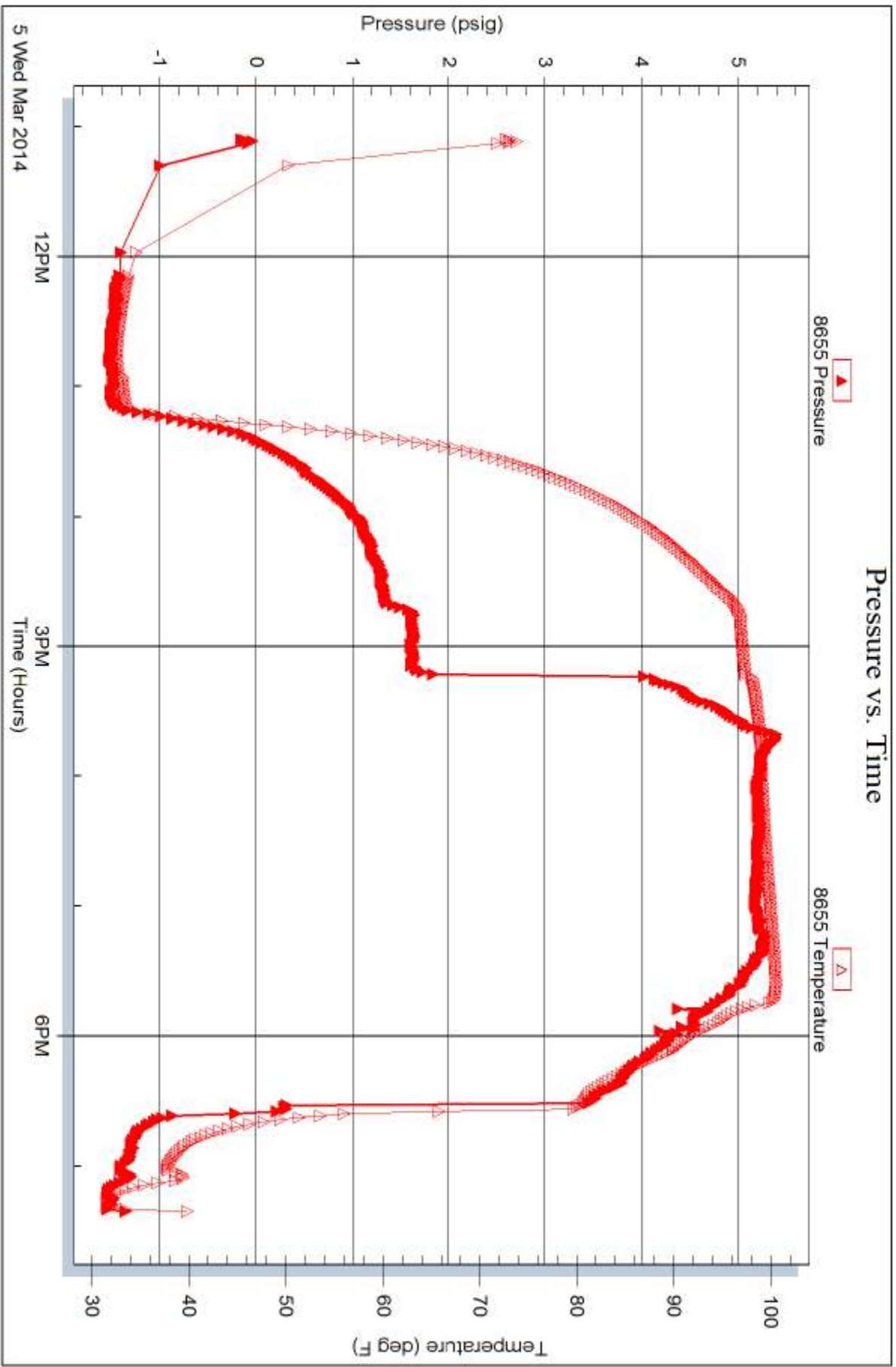
Serial #: 8655

Fluid

McEvain Energy Inc

Greclan #30-15

DST Test Number: 1



Trilobite Testing, Inc

Ref. No: 56085

Printed: 2014.03.06 @ 07:45:37