



TRILOBITE TESTING, INC.

DRILL STEM TEST REPORT

McElvain Energy Inc
 1050 17th STE 2500
 Denver, Co 80265
 ATTN: Rodney Gonzalas

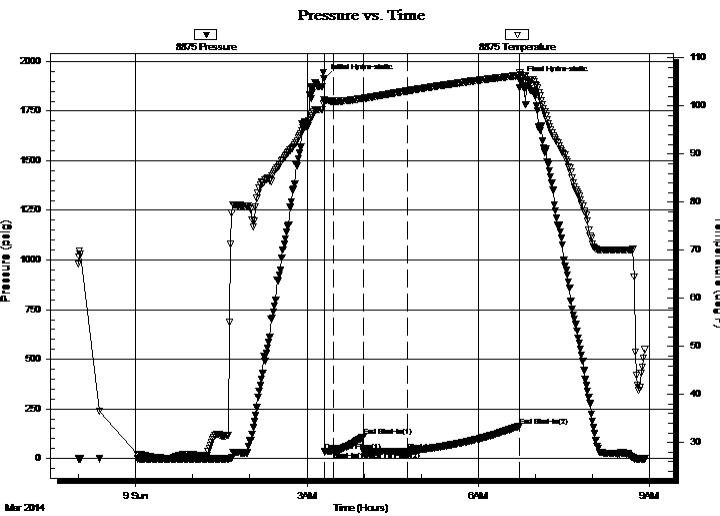
30-10S-21W Graham KS
Grecian #30-15
 Job Ticket: 56087 **DST#: 5**
 Test Start: 2014.03.08 @ 23:00:00

GENERAL INFORMATION:

Formation: **Conglomerate**
 Deviated: No Whipstock: ft (KB)
 Time Tool Opened: 03:18:15
 Time Test Ended: 08:54:45
 Interval: **3832.00 ft (KB) To 3894.00 ft (KB) (TVD)**
 Total Depth: 3894.00 ft (KB) (TVD)
 Hole Diameter: 7.88 inches Hole Condition: Good
 Test Type: Conventional Bottom Hole (Reset)
 Tester: Cody Bloedorn
 Unit No: 73
 Reference Elevations: 2229.00 ft (KB)
 2219.00 ft (CF)
 KB to GR/CF: 10.00 ft

Serial #: 8875 Outside
 Press @ Run Depth: 36.04 psig @ 3869.00 ft (KB) Capacity: 8000.00 psig
 Start Date: 2014.03.08 End Date: 2014.03.09 Last Calib.: 2014.03.09
 Start Time: 23:00:05 End Time: 08:54:45 Time On Btm: 2014.03.09 @ 03:18:00
 Time Off Btm: 2014.03.09 @ 06:44:15

TEST COMMENT: 10 - IF- 1 1/4" blow
 30 - IS- No return
 45 - FF- surged and died
 120 - FS- No return



PRESSURE SUMMARY

Time (Min.)	Pressure (psig)	Temp (deg F)	Annotation
0	1915.06	101.32	Initial Hydro-static
1	34.26	100.83	Open To Flow (1)
10	35.14	101.00	Shut-In(1)
41	109.98	101.61	End Shut-In(1)
42	35.41	101.60	Open To Flow (2)
87	36.04	103.12	Shut-In(2)
206	161.27	106.35	End Shut-In(2)
207	1904.64	106.59	Final Hydro-static

Recovery

Length (ft)	Description	Volume (bbl)
4.00	Mud, with spots of oil, 100%M	0.06

* Recovery from multiple tests

Gas Rates

Choke (inches)	Pressure (psig)	Gas Rate (Mcf/d)



TRILOBITE TESTING, INC.

DRILL STEM TEST REPORT

McElvain Energy Inc
 1050 17th STE 2500
 Denver, Co 80265
 ATTN: Rodney Gonzalas

30-10S-21W Graham KS
Grecian #30-15
 Job Ticket: 56087 **DST#: 5**
 Test Start: 2014.03.08 @ 23:00:00

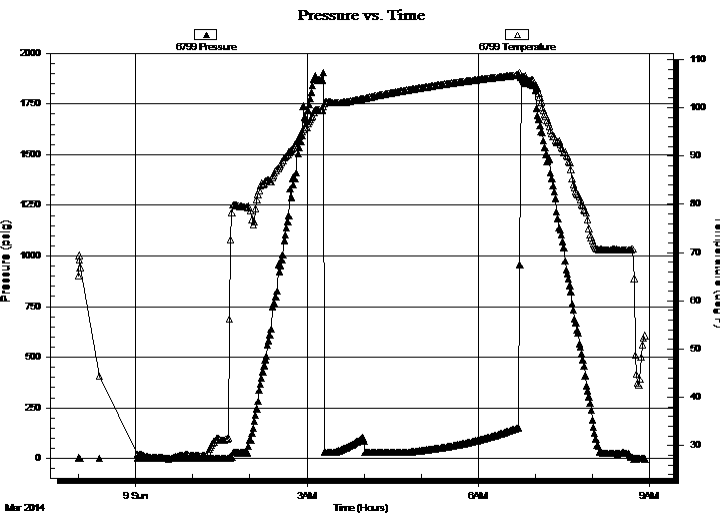
GENERAL INFORMATION:

Formation: **Conglomerate**
 Deviated: No Whipstock: ft (KB)
 Time Tool Opened: 03:18:15
 Time Test Ended: 08:54:45
 Interval: **3832.00 ft (KB) To 3894.00 ft (KB) (TVD)**
 Total Depth: 3894.00 ft (KB) (TVD)
 Hole Diameter: 7.88 inches Hole Condition: Good
 Test Type: Conventional Bottom Hole (Reset)
 Tester: Cody Bloedorn
 Unit No: 73
 Reference Elevations: 2229.00 ft (KB)
 2219.00 ft (CF)
 KB to GR/CF: 10.00 ft

Serial #: 6799 Inside

Press @ Run Depth: psig @ 3869.00 ft (KB) Capacity: 8000.00 psig
 Start Date: 2014.03.08 End Date: 2014.03.09 Last Calib.: 2014.03.09
 Start Time: 23:00:05 End Time: 08:54:45 Time On Btm:
 Time Off Btm:

TEST COMMENT: 10 - IF- 1 1/4" blow
 30 - IS- No return
 45 - FF- surged and died
 120 - FS- No return



PRESSURE SUMMARY

Time (Min.)	Pressure (psig)	Temp (deg F)	Annotation

Recovery

Length (ft)	Description	Volume (bbl)
4.00	Mud, with spots of oil, 100%M	0.06

Gas Rates

Choke (inches)	Pressure (psig)	Gas Rate (Mcf/d)

* Recovery from multiple tests



TRILOBITE TESTING, INC.

DRILL STEM TEST REPORT

McElvain Energy Inc
 1050 17th STE 2500
 Denver, Co 80265
 ATTN: Rodney Gonzalas

30-10S-21W Graham KS
Grecian #30-15
 Job Ticket: 56087 **DST#: 5**
 Test Start: 2014.03.08 @ 23:00:00

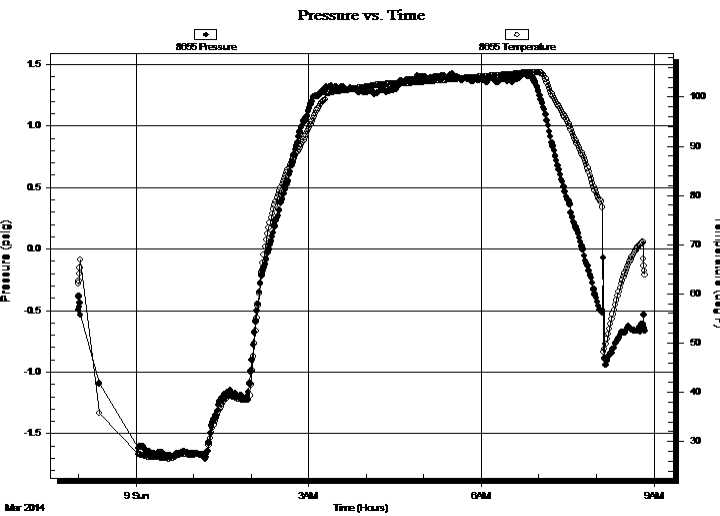
GENERAL INFORMATION:

Formation: **Conglomerate**
 Deviated: No Whipstock: ft (KB)
 Time Tool Opened: 03:18:15
 Time Test Ended: 08:54:45
Interval: 3832.00 ft (KB) To 3894.00 ft (KB) (TVD)
 Total Depth: 3894.00 ft (KB) (TVD)
 Hole Diameter: 7.88 inches Hole Condition: Good
 Test Type: Conventional Bottom Hole (Reset)
 Tester: Cody Bloedorn
 Unit No: 73
 Reference Elevations: 2229.00 ft (KB)
 2219.00 ft (CF)
 KB to GR/CF: 10.00 ft

Serial #: 8655 Fluid

Press @ Run Depth: psig @ 3797.00 ft (KB) Capacity: 8000.00 psig
 Start Date: 2014.03.08 End Date: 2014.03.09 Last Calib.: 2014.03.09
 Start Time: 23:00:05 End Time: 08:50:28 Time On Btm:
 Time Off Btm:

TEST COMMENT: 10 - IF- 1 1/4" blow
 30 - IS- No return
 45 - FF- surged and died
 120 - FS- No return



PRESSURE SUMMARY

Time (Min.)	Pressure (psig)	Temp (deg F)	Annotation

Recovery

Length (ft)	Description	Volume (bbl)
4.00	Mud, with spots of oil, 100%M	0.06

Gas Rates

Choke (inches)	Pressure (psig)	Gas Rate (Mcf/d)

* Recovery from multiple tests



**TRILOBITE
TESTING, INC.**

DRILL STEM TEST REPORT

FLUID SUMMARY

McElvain Energy Inc
1050 17th STE 2500
Denver, Co 80265
ATTN: Rodney Gonzalas

30-10S-21W Graham KS
Grecian #30-15
Job Ticket: 56087 **DST#: 5**
Test Start: 2014.03.08 @ 23:00:00

Mud and Cushion Information

Mud Type: Gel Chem	Cushion Type:	Oil API:	deg API
Mud Weight: 9.00 lb/gal	Cushion Length: ft	Water Salinity:	ppm
Viscosity: 55.00 sec/qt	Cushion Volume: bbl		
Water Loss: 6.40 in ³	Gas Cushion Type:		
Resistivity: ohm.m	Gas Cushion Pressure: psig		
Salinity: 1400.00 ppm			
Filter Cake: inches			

Recovery Information

Recovery Table

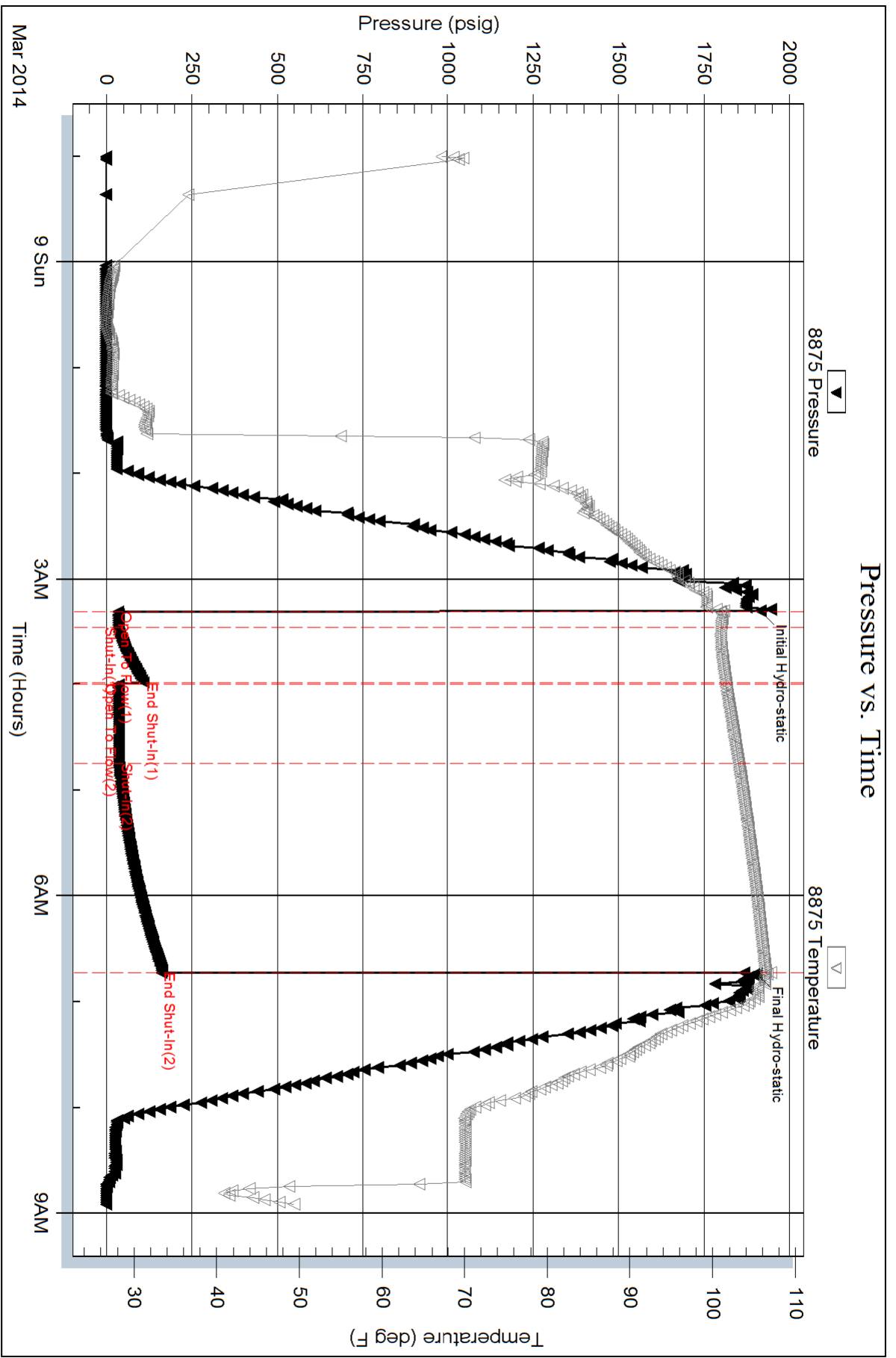
Length ft	Description	Volume bbl
4.00	Mud, w ith spots of oil, 100%M	0.056

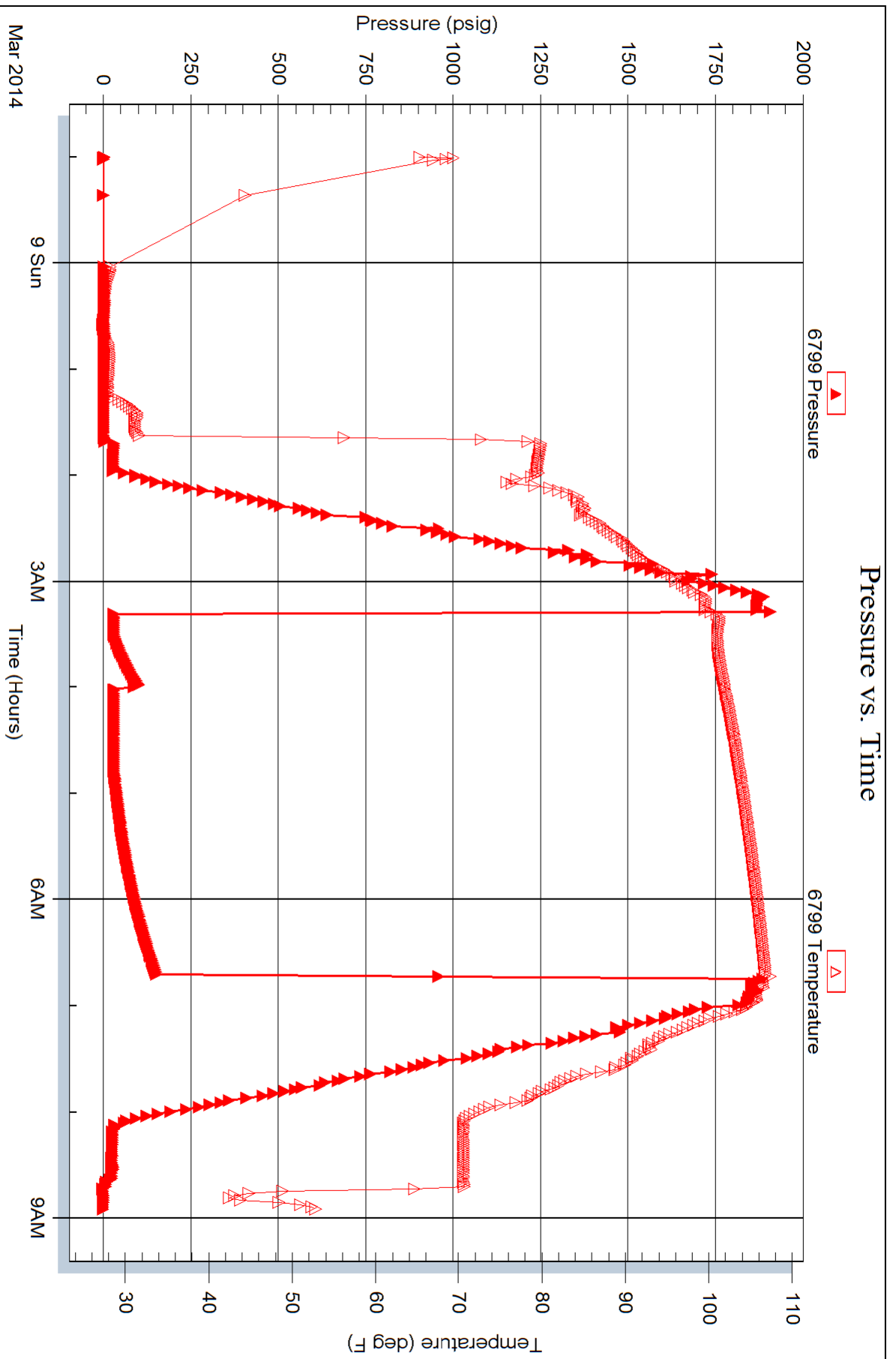
Total Length: 4.00 ft Total Volume: 0.056 bbl

Num Fluid Samples: 0 Num Gas Bombs: 0 Serial #:

Laboratory Name: Laboratory Location:

Recovery Comments: Sampler: PSI: 60, 2,000ML of mud w ith oil spots





Serial #: 8655

Fluid

McElvain Energy Inc

Greician #30-15

DST Test Number: 5

