



TRILOBITE TESTING, INC.

DRILL STEM TEST REPORT

Samuel Gary Jr & Associates Inc

26-14s-17w

Dinkel 1-26

Job Ticket: 041769

DST#: 1

ATTN:

Test Start: 2013.09.20 @ 15:23:59

GENERAL INFORMATION:

Formation: **Arbuckle**

Deviated: No Whipstock: ft (KB)

Time Tool Opened: 17:20:29

Time Test Ended: 22:53:59

Test Type: Conventional Straddle (Initial)

Tester: Jeff Brown

Unit No: # 67

Interval: 3485.00 ft (KB) To 3500.00 ft (KB) (TVD)

Reference Elevations: 1963.00 ft (KB)

Total Depth: 3625.00 ft (KB) (TVD)

1955.00 ft (CF)

Hole Diameter: 7.88 inches Hole Condition: Good

KB to GR/CF: 8.00 ft

Serial #: 6625 Inside

Press @ Run Depth: 37.21 psig @ 3488.00 ft (KB)

Capacity: 8000.00 psig

Start Date: 2013.09.20 End Date: 2013.09.20

Last Calib.: 2013.09.20

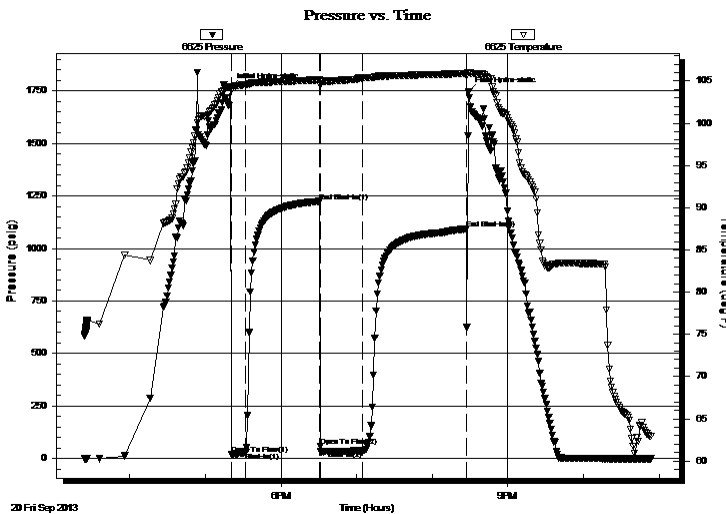
Start Time: 15:24:00 End Time: 22:53:59

Time On Btm: 2013.09.20 @ 17:19:59

Time Off Btm: 2013.09.20 @ 20:28:59

TEST COMMENT: IFP=10-min=Weak blow built to 1-1/4 in
 ISI=75-min=Dead no blow back
 FFP=20-min=Weak blow built to 1-1/2 in
 FSI=80-Min=Dead no blow back

PRESSURE SUMMARY



Time (Min.)	Pressure (psig)	Temp (deg F)	Annotation
0	1765.04	104.36	Initial Hydro-static
1	19.91	103.84	Open To Flow (1)
12	30.68	104.56	Shut-In(1)
71	1224.35	105.15	End Shut-In(1)
71	59.40	104.53	Open To Flow (2)
105	37.21	105.40	Shut-In(2)
187	1092.99	105.88	End Shut-In(2)
189	1748.33	106.03	Final Hydro-static

Recovery

Length (ft)	Description	Volume (bbl)
42.00	OCM 10%O 90%M	0.32
8.00	Free Oil 100%O	0.11

Gas Rates

	Choke (inches)	Pressure (psig)	Gas Rate (Mcf/d)



TRILOBITE TESTING, INC.

DRILL STEM TEST REPORT

Samuel Gary Jr & Associates Inc

26-14s-17w

Dinkel 1-26

Job Ticket: 041769

DST#: 1

ATTN:

Test Start: 2013.09.20 @ 15:23:59

GENERAL INFORMATION:

Formation: **Arbuckle**

Deviated: No Whipstock: ft (KB)

Time Tool Opened: 17:20:29

Time Test Ended: 22:53:59

Test Type: Conventional Straddle (Initial)

Tester: Jeff Brown

Unit No: # 67

Interval: 3485.00 ft (KB) To 3500.00 ft (KB) (TVD)

Reference Elevations: 1963.00 ft (KB)

Total Depth: 3625.00 ft (KB) (TVD)

1955.00 ft (CF)

Hole Diameter: 7.88 inches Hole Condition: Good

KB to GR/CF: 8.00 ft

Serial #: 8167 Fluid

Press @ Run Depth: psig @ 3450.00 ft (KB)

Capacity: 8000.00 psig

Start Date: 2013.09.20

End Date: 2013.09.20

Last Calib.: 2013.09.20

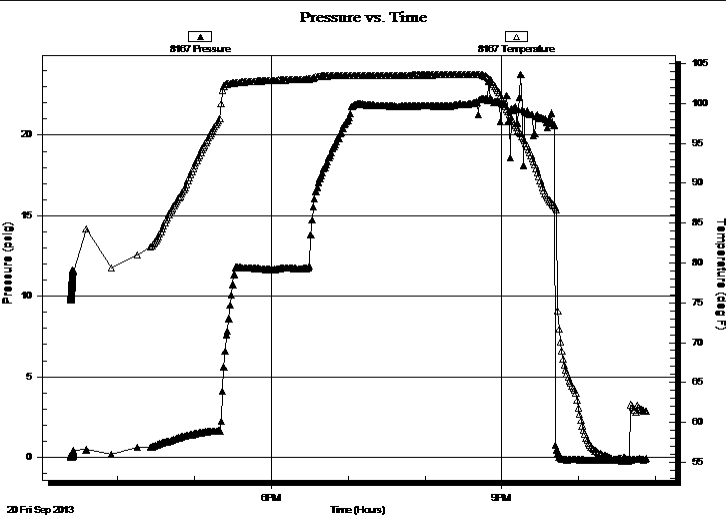
Start Time: 15:23:16

End Time: 22:53:15

Time On Btm:

Time Off Btm:

TEST COMMENT: IFP=10-min=Weak blow built to 1-1/4 in
 ISI=75-min=Dead no blow back
 FFP=20-min=Weak blow built to 1-1/2 in
 FSI=80-Min=Dead no blow back



PRESSURE SUMMARY

Time (Min.)	Pressure (psig)	Temp (deg F)	Annotation

Recovery

Length (ft)	Description	Volume (bbl)
42.00	OCM 10%O 90%M	0.32
8.00	Free Oil 100%O	0.11

Gas Rates

	Choke (inches)	Pressure (psig)	Gas Rate (Mcf/d)



TRILOBITE TESTING, INC.

DRILL STEM TEST REPORT

Samuel Gary Jr & Associates Inc

26-14s-17w

Dinkel 1-26

Job Ticket: 041769

DST#: 1

ATTN:

Test Start: 2013.09.20 @ 15:23:59

GENERAL INFORMATION:

Formation: **Arbuckle**

Deviated: No Whipstock: ft (KB)

Time Tool Opened: 17:20:29

Time Test Ended: 22:53:59

Test Type: Conventional Straddle (Initial)

Tester: Jeff Brown

Unit No: # 67

Interval: 3485.00 ft (KB) To 3500.00 ft (KB) (TVD)

Reference Elevations: 1963.00 ft (KB)

Total Depth: 3625.00 ft (KB) (TVD)

1955.00 ft (CF)

Hole Diameter: 7.88 inches Hole Condition: Good

KB to GR/CF: 8.00 ft

Serial #: 8736 Below (Straddle)

Press @ Run Depth: psig @ 3522.00 ft (KB)

Capacity: 8000.00 psig

Start Date: 2013.09.20 End Date: 2013.09.20

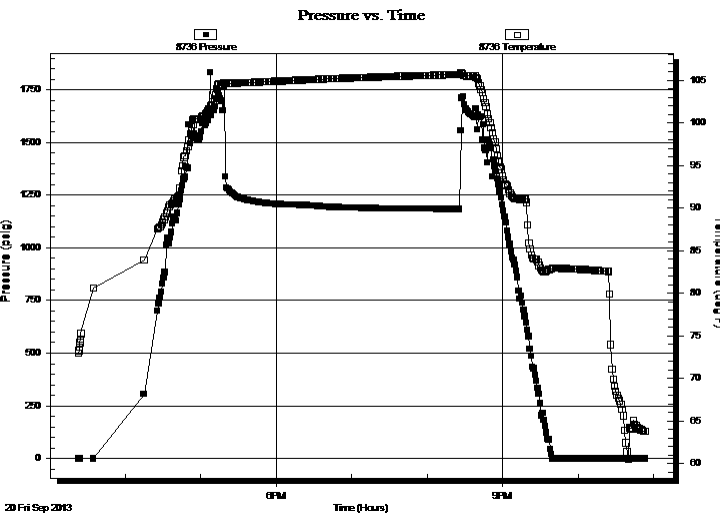
Last Calib.: 2013.09.20

Start Time: 15:23:07 End Time: 22:53:01

Time On Btm:

Time Off Btm:

TEST COMMENT: IFP=10-min=Weak blow built to 1-1/4 in
 ISL=75-min=Dead no blow back
 FFP=20-min=Weak blow built to 1-1/2 in
 FSL=80-Min=Dead no blow back



PRESSURE SUMMARY

Time (Min.)	Pressure (psig)	Temp (deg F)	Annotation

Recovery

Length (ft)	Description	Volume (bbl)
42.00	OCM 10%O 90%M	0.32
8.00	Free Oil 100%O	0.11

Gas Rates

Choke (inches)	Pressure (psig)	Gas Rate (Mcf/d)



**TRILOBITE
TESTING, INC.**

DRILL STEM TEST REPORT

FLUID SUMMARY

Samuel Gary Jr & Associates Inc

26-14s-17w

Dinkel 1-26

Job Ticket: 041769

DST#: 1

ATTN:

Test Start: 2013.09.20 @ 15:23:59

Mud and Cushion Information

Mud Type: Gel Chem

Mud Weight: 9.00 lb/gal

Viscosity: 68.00 sec/qt

Water Loss: 8.79 in³

Resistivity: ohm.m

Salinity: 6300.00 ppm

Filter Cake: inches

Cushion Type:

Cushion Length: ft

Cushion Volume: bbl

Gas Cushion Type:

Gas Cushion Pressure: psig

Oil API:

Water Salinity: deg API

ppm

Recovery Information

Recovery Table

Length ft	Description	Volume bbl
42.00	OCM 10%O 90%M	0.316
8.00	Free Oil 100%O	0.112

Total Length: 50.00 ft Total Volume: 0.428 bbl

Num Fluid Samples: 0

Num Gas Bombs: 0

Serial #:

Laboratory Name:

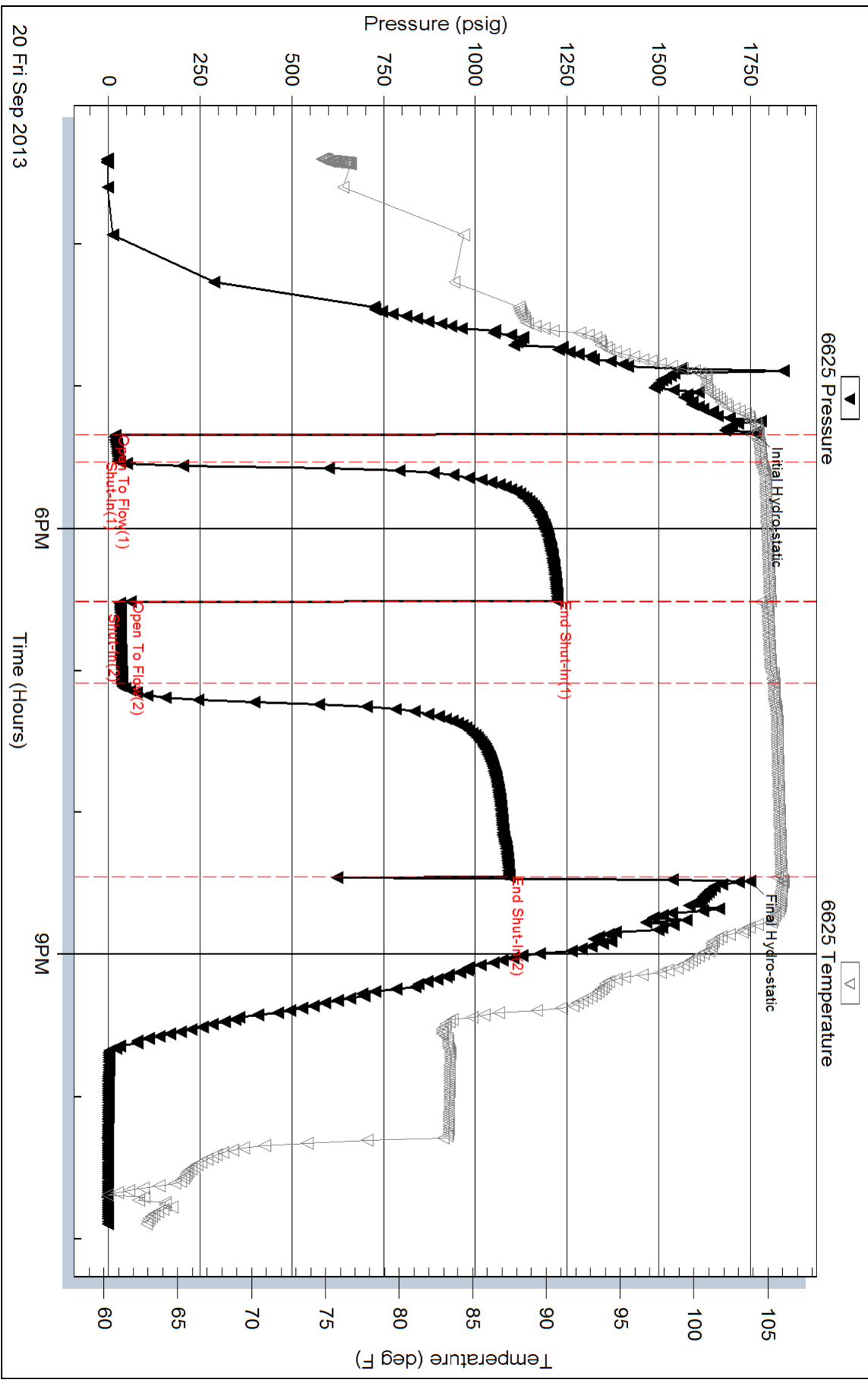
Laboratory Location:

Recovery Comments: 2000 ML of fluid 240 PSI

800 ML of mud

1200 ML of Oil

Pressure vs. Time



Serial #: 8167

Fluid

Samuel Gary Jr & Associates Inc

Dinkel 1-26

DST Test Number: 1



Trilobite Testing, Inc

Ref. No: 041769

Printed: 2013.09.21 @ 00:41:55

Serial #: 8736

Below (Stratton) Gary Jr & Associates Inc

Dinkel 1-26

DST Test Number: 1

