



TRILOBITE TESTING, INC.

DRILL STEM TEST REPORT

Mustang Energy Corp.

22-11s-19w Ellis, KS

PO Box 1121
Hays, KS 67601

M. R. Allen #14

Job Ticket: 55428

DST#: 1

ATTN: Herb Deines

Test Start: 2013.11.28 @ 15:43:01

GENERAL INFORMATION:

Formation: **Topeka**

Deviated: No Whipstock: ft (KB)

Time Tool Opened: 18:08:41

Time Test Ended: 23:14:40

Test Type: Conventional Bottom Hole (Initial)

Tester: Brannan L

Unit No: 49

Interval: 3020.00 ft (KB) To 3050.00 ft (KB) (TVD)

Reference Elevations: 2047.00 ft (KB)

Total Depth: 3050.00 ft (KB) (TVD)

2042.00 ft (CF)

Hole Diameter: 7.88 inches Hole Condition: Fair

KB to GR/CF: 5.00 ft

Serial #: 8898 Outside

Press @ Run Depth: 53.01 psig @ 3022.00 ft (KB)

Capacity: 8000.00 psig

Start Date: 2013.11.28

End Date:

2013.11.28

Last Calib.:

2013.11.28

Start Time: 15:43:02

End Time:

23:14:41

Time On Btm:

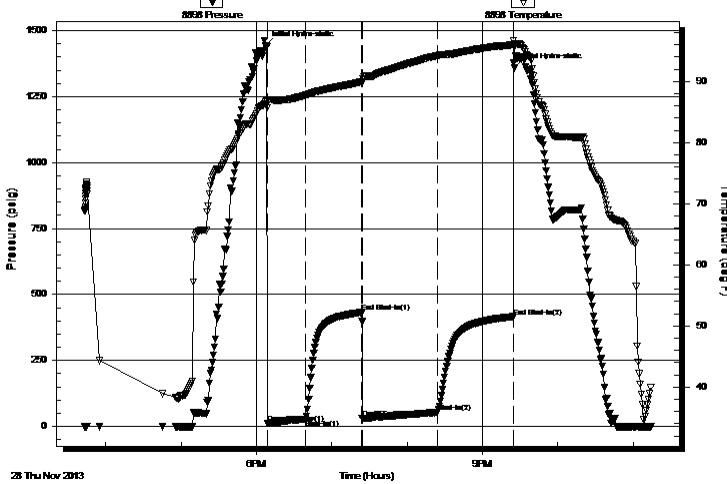
2013.11.28 @ 18:07:01

Time Off Btm:

2013.11.28 @ 21:25:21

TEST COMMENT: 30- IF- Slow ly built to 2"
45- IS- No blow
60- FF- Built very slow ly to 2"
60- FSI- No blow

Pressure vs. Time



PRESSURE SUMMARY

Time (Min.)	Pressure (psig)	Temp (deg F)	Annotation
0	1444.46	86.61	Initial Hydro-static
2	11.12	85.75	Open To Flow (1)
33	27.93	87.78	Shut-In(1)
77	431.96	89.95	End Shut-In(1)
78	29.70	89.77	Open To Flow (2)
138	53.01	94.26	Shut-In(2)
198	414.88	96.05	End Shut-In(2)
199	1358.47	96.19	Final Hydro-static

Recovery

Length (ft)	Description	Volume (bbl)
100.00	MW, 60%W	0.49

Gas Rates

Choke (inches)	Pressure (psig)	Gas Rate (Mcf/d)



**TRILOBITE
TESTING, INC.**

DRILL STEM TEST REPORT

FLUID SUMMARY

Mustang Energy Corp.

22-11s-19w Ellis, KS

PO Box 1121
Hays, KS 67601

M. R. Allen #14

Job Ticket: 55428

DST#: 1

ATTN: Herb Deines

Test Start: 2013.11.28 @ 15:43:01

Mud and Cushion Information

Mud Type: Gel Chem

Cushion Type:

Oil API:

deg API

Mud Weight: 9.00 lb/gal

Cushion Length:

ft

Water Salinity:

40000 ppm

Viscosity: 54.00 sec/qt

Cushion Volume:

bbbl

Water Loss: 8.79 in³

Gas Cushion Type:

Resistivity: ohm.m

Gas Cushion Pressure:

psig

Salinity: 2000.00 ppm

Filter Cake: inches

Recovery Information

Recovery Table

Length ft	Description	Volume bbl
100.00	MW, 60%W	0.492

Total Length: 100.00 ft Total Volume: 0.492 bbl

Num Fluid Samples: 0

Num Gas Bombs: 0

Serial #:

Laboratory Name:

Laboratory Location:

Recovery Comments:

