



DRILL STEM TEST REPORT

FLUID SUMMARY

FG Holl Company L.L.C

26-17s-15w Barton

9431 E Central Ste 100 Wichita KS 67206+2563

Lang?Bahr Unit #2-26

Job Ticket: 18455

DST#: 3

ATTN: Rene Husted

Test Start: 2013.11.07 @ 22:10:00

Mud and Cushion Information

Mud Type: Gel Chem

Cushion Type:

Oil API:

deg API

Mud Weight: 9.00 lb/gal

Cushion Length:

ft

Water Salinity:

ppm

Viscosity: 57.00 sec/qt

Cushion Volume:

bbbl

Water Loss: 9.19 in³

Gas Cushion Type:

Resistivity: ohm.m

Gas Cushion Pressure:

psia

Salinity: 6800.00 ppm

Filter Cake: 1.00 inches

Recovery Information

Recovery Table

Length ft	Description	Volume bbl
35.00	spot oil cut mud 1%oil 99%mud	0.491
0.00	145 gas in pipe	0.000

Total Length: 35.00 ft Total Volume: 0.491 bbl

Num Fluid Samples: 0

Num Gas Bombs: 0

Serial #:

Laboratory Name:

Laboratory Location:

Recovery Comments:



DRILL STEM TEST REPORT

TOOL DIAGRAM

FG Holl Company L.L.C

26-17s-15w Barton

9431 E Central Ste 100 Wichita KS 67206+2563

Lang?Bahr Unit #2-26

Job Ticket: 18455

DST#: 3

ATTN: Rene Husted

Test Start: 2013.11.07 @ 22:10:00

Tool Information

Drill Pipe:	Length: 3374.00 ft	Diameter: 3.80 inches	Volume: 47.33 bbl	Tool Weight:	1000.00 lb
Heavy Wt. Pipe:	Length: 0.00 ft	Diameter: 0.00 inches	Volume: 0.00 bbl	Weight set on Packer:	20000.00 lb
Drill Collar:	Length: 0.00 ft	Diameter: 0.00 inches	Volume: 0.00 bbl	Weight to Pull Loose:	53000.00 lb
			Total Volume: 47.33 bbl	Tool Chased	0.00 ft
Drill Pipe Above KB:	28.00 ft			String Weight: Initial	48000.00 lb
Depth to Top Packer:	3374.00 ft			Final	48000.00 lb
Depth to Bottom Packer:	ft				
Interval between Packers:	76.00 ft				
Tool Length:	104.00 ft				
Number of Packers:	2	Diameter:	6.75 inches		
Tool Comments:					

Tool Description	Length (ft)	Serial No.	Position	Depth (ft)	Accum. Lengths
------------------	-------------	------------	----------	------------	----------------

Shut-In Tool	5.00			3351.00	
Hydraulic Tool	5.00			3356.00	
Jars	6.00			3362.00	
Safety Joint	2.00			3364.00	
Packer	5.00			3369.00	28.00 Bottom Of Top Packer
Packer	5.00			3374.00	
Anchor	0.00			3374.00	
Change Over Sub	0.75			3374.75	
Drill Pipe	31.50			3406.25	
Change Over Sub	0.75			3407.00	
Anchor	38.00			3445.00	
Recorder	1.00	6731	Inside	3446.00	
Recorder	1.00	8159	Outside	3447.00	
Bullnose	3.00			3450.00	76.00 Bottom Packers & Anchor

Total Tool Length: 104.00



DRILL STEM TEST REPORT

FG Holl Company L.L.C

26-17s-15w Barton

9431 E Central Ste 100 Wichita KS 67206+2563

Lang?Bahr Unit #2-26

ATTN: Rene Husted

Job Ticket: 18455

DST#: 3

Test Start: 2013.11.07 @ 22:10:00

GENERAL INFORMATION:

Formation: **Lansing G, H, I**

Deviated: No Whipstock: ft (KB)

Time Tool Opened: 23:25:00

Time Test Ended: 04:49:00

Test Type: Conventional Bottom Hole (Initial)

Tester: Jared Scheck

Unit No: 3320- Great Bend - 4

Interval: 3374.00 ft (KB) To 3450.00 ft (KB) (TVD)

Reference Elevations: 2000.00 ft (KB)

Total Depth: 3450.00 ft (KB) (TVD)

1992.00 ft (CF)

Hole Diameter: 7.88 inches Hole Condition: Fair

KB to GR/CF: 8.00 ft

Serial #: 8159

Press @RunDepth: 278.12 psia @ ft (KB)

Capacity: 50000.00 psia

Start Date: 2013.11.07

End Date: 2013.11.08

Last Calib.: 2013.11.08

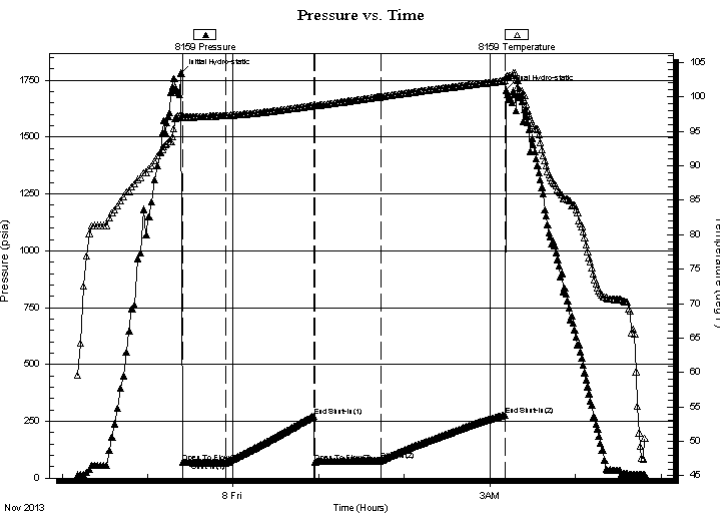
Start Time: 22:11:00

End Time: 04:48:30

Time On Btm: 2013.11.07 @ 23:23:30

Time Off Btm: 2013.11.08 @ 03:11:30

TEST COMMENT: 1st Opening 30 Minutes-Weak blow built 7 1/2 inches into water in 30 minutes
 1st Shut-in 60 Minutes-No blow back
 2nd Opening 45 Minutes-Fair blow built bottom of bucket in 13 minutes
 2nd Shut-in 90 Minutes-No blow back



PRESSURE SUMMARY

Time (Min.)	Pressure (psia)	Temp (deg F)	Annotation
0	1781.12	97.36	Initial Hydro-static
1	69.32	97.13	Open To Flow (1)
32	68.20	97.28	Shut-In(1)
93	272.68	98.73	End Shut-In(1)
94	71.35	98.70	Open To Flow (2)
140	77.41	100.01	Shut-In(2)
227	278.12	102.33	End Shut-In(2)
228	1707.27	102.94	Final Hydro-static

Recovery

Length (ft)	Description	Volume (bbl)
35.00	spot oil cut mud 1%oil 99%mud	0.49
0.00	145 gas in pipe	0.00

Gas Rates

	Choke (inches)	Pressure (psia)	Gas Rate (Mcf/d)



DRILL STEM TEST REPORT

FG Holl Company L.L.C

26-17s-15w Barton

9431 E Central Ste 100 Wichita KS 67206+2563

Lang?Bahr Unit #2-26

ATTN: Rene Husted

Job Ticket: 18455

DST#: 3

Test Start: 2013.11.07 @ 22:10:00

GENERAL INFORMATION:

Formation: **Lansing G, H, I**

Deviated: No Whipstock: ft (KB)

Time Tool Opened: 23:25:00

Time Test Ended: 04:49:00

Test Type: Conventional Bottom Hole (Initial)

Tester: Jared Scheck

Unit No: 3320- Great Bend - 4

Interval: 3374.00 ft (KB) To 3450.00 ft (KB) (TVD)

Reference Elevations: 2000.00 ft (KB)

Total Depth: 3450.00 ft (KB) (TVD)

1992.00 ft (CF)

Hole Diameter: 7.88 inches Hole Condition: Fair

KB to GR/CF: 8.00 ft

Serial #: 6731

Press @ RunDepth: 77.67 psia @ ft (KB)

Capacity: 5000.00 psia

Start Date: 2013.11.07

End Date: 2013.11.08

Last Calib.: 2013.11.08

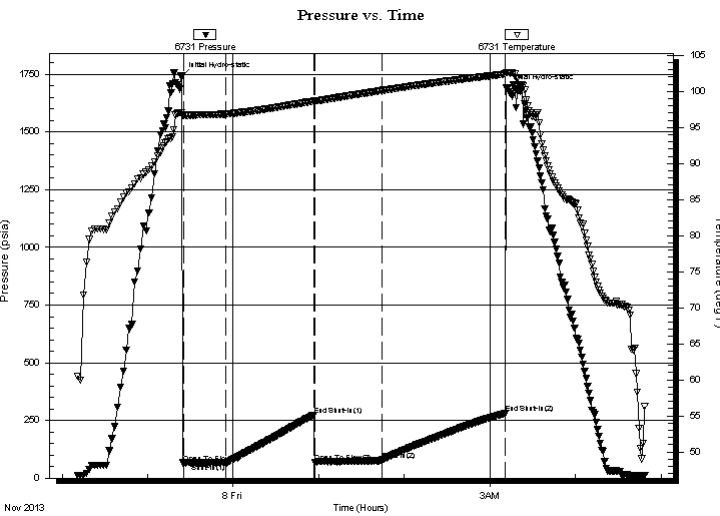
Start Time: 22:11:00

End Time: 04:49:00

Time On Btm: 2013.11.07 @ 23:24:00

Time Off Btm: 2013.11.08 @ 03:11:30

TEST COMMENT: 1st Opening 30 Minutes-Weak blow built 7 1/2 inches into water in 30 minutes
 1st Shut-in 60 Minutes-No blow back
 2nd Opening 45 Minutes-Fair blow built bottom of bucket in 13 minutes
 2nd Shut-in 90 Minutes-No blow back



PRESSURE SUMMARY

Time (Min.)	Pressure (psia)	Temp (deg F)	Annotation
0	1738.46	97.04	Initial Hydro-static
1	65.83	96.65	Open To Flow (1)
31	65.48	96.86	Shut-In(1)
93	273.14	98.64	End Shut-In(1)
94	67.42	98.63	Open To Flow (2)
140	77.67	100.10	Shut-In(2)
227	279.64	102.38	End Shut-In(2)
228	1690.17	102.62	Final Hydro-static

Recovery

Length (ft)	Description	Volume (bbl)
35.00	spot oil cut mud 1%oil 99%mud	0.49
0.00	145 gas in pipe	0.00

Gas Rates

Choke (inches)	Pressure (psia)	Gas Rate (Mcf/d)



DRILL STEM TEST REPORT

Prepared For: **FG Holl Company L.L.C**

9431 E Central Ste 100 Wichita KS
67206+2563

ATTN: Rene Husted

Lang?Bahr Unit #2-26

26-17s-15w Barton

Start Date: 2013.11.07 @ 22:10:00

End Date: 2013.11.08 @ 04:49:00

Job Ticket #: 18455 DST #: 3

Superior Testers Enterprises LLC
PO Box 138 Great Bend KS 67530
1-800-792-6902

Printed: 2013.11.08 @ 05:38:17