



**TRILOBITE TESTING, INC.**

# DRILL STEM TEST REPORT

Culbreath Oil & Gas Company Inc.

**20-10s-31w Thomas,KS**

1532 S. Peoria Ave.  
Tulsa, OK 74120

**OstmeyerBixenman120A**

ATTN: Pat Deenihan

Job Ticket: 55653

**DST#: 6**

Test Start: 2013.11.27 @ 08:32:00

## GENERAL INFORMATION:

Formation: **Myrick Ft. Scott**

Deviated: No Whipstock: ft (KB)

Time Tool Opened: 10:10:30

Time Test Ended: 15:56:45

Test Type: Conventional Bottom Hole (Reset)

Tester: Sam Esparza

Unit No: 64

**Interval: 4443.00 ft (KB) To 4510.00 ft (KB) (TVD)**

Reference Elevations: 3022.00 ft (KB)

Total Depth: 4510.00 ft (KB) (TVD)

3014.00 ft (CF)

Hole Diameter: 7.88 inches Hole Condition: Good

KB to GR/CF: 8.00 ft

**Serial #: 8845 Outside**

Press @ Run Depth: 23.42 psig @ 4444.00 ft (KB)

Capacity: 8000.00 psig

Start Date: 2013.11.27 End Date: 2013.11.27

Last Calib.: 2013.11.27

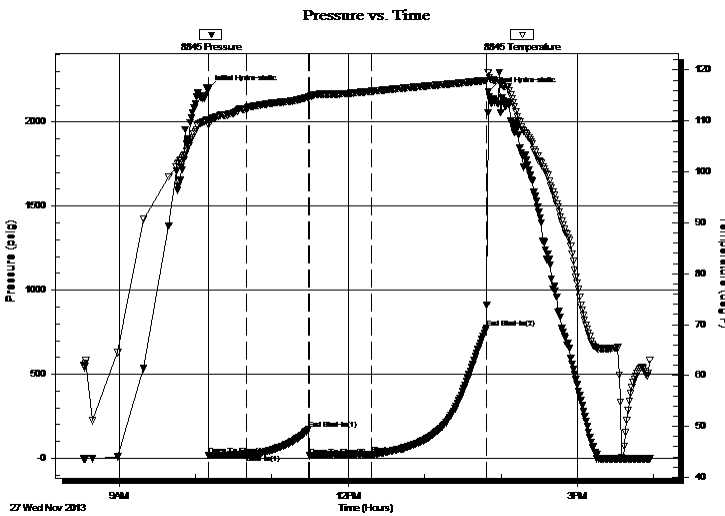
Start Time: 08:32:05 End Time: 15:56:44

Time On Btm: 2013.11.27 @ 10:10:15

Time Off Btm: 2013.11.27 @ 13:50:00

TEST COMMENT: IF: 2" Blow .  
IS: No Return.  
FF: 3 1/2" Blow .  
FS: No Return.

## PRESSURE SUMMARY



Time (Min.)	Pressure (psig)	Temp (deg F)	Annotation
0	2195.12	110.16	Initial Hydro-static
1	16.88	109.25	Open To Flow (1)
30	22.37	112.32	Shut-In(1)
79	175.47	114.70	End Shut-In(1)
80	15.71	114.70	Open To Flow (2)
128	23.42	115.81	Shut-In(2)
219	773.46	117.93	End Shut-In(2)
220	2180.97	119.38	Final Hydro-static

## Recovery

Length (ft)	Description	Volume (bbl)
30.00	Mud ( Oil Spots)	0.42

\* Recovery from multiple tests

## Gas Rates

Choke (inches)	Pressure (psig)	Gas Rate (Mcf/d)



**TRILOBITE  
TESTING, INC.**

# DRILL STEM TEST REPORT

**FLUID SUMMARY**

Culbreath Oil & Gas Company Inc.

**20-10s-31w Thomas,KS**

1532 S. Peoria Ave.  
Tulsa, OK 74120

**OstmeyerBixenman120A**

Job Ticket: 55653

**DST#: 6**

ATTN: Pat Deenihan

Test Start: 2013.11.27 @ 08:32:00

## Mud and Cushion Information

Mud Type: Gel Chem

Cushion Type:

Oil API:

deg API

Mud Weight: 9.00 lb/gal

Cushion Length:

ft

Water Salinity:

ppm

Viscosity: 54.00 sec/qt

Cushion Volume:

bbbl

Water Loss: 8.79 in<sup>3</sup>

Gas Cushion Type:

Resistivity: 0.00 ohm.m

Gas Cushion Pressure:

psig

Salinity: 800.00 ppm

Filter Cake: 1.00 inches

## Recovery Information

Recovery Table

Length ft	Description	Volume bbl
30.00	Mud ( Oil Spots)	0.421

Total Length: 30.00 ft      Total Volume: 0.421 bbl

Num Fluid Samples: 0

Num Gas Bombs: 0

Serial #:

Laboratory Name:

Laboratory Location:

Recovery Comments:

