



DRILL STEM TEST REPORT

Prepared For: **Younger Energy Company**

9415 East Harry Street Suit
403 Wichita Ks.67207

ATTN: Keith Reavis

Jost 1-27

27-21s-15w-Pawnee

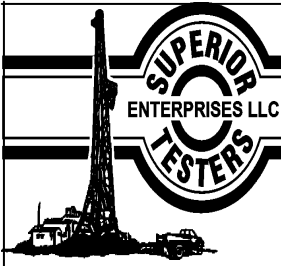
Start Date: 2013.11.23 @ 05:22:00

End Date: 2013.11.23 @ 12:40:00

Job Ticket #: 18464 DST #: 1

Superior Testers Enterprises LLC
PO Box 138 Great Bend KS 67530
1-800-792-6902

Printed: 2013.11.23 @ 13:05:47



DRILL STEM TEST REPORT

Younger Energy Company

27-21s-15w-Pawnee

9415 East Harry Street Suit
403 Wichita Ks.67207

Jost 1-27

Job Ticket: 18464

DST#: 1

ATTN: Keith Reavis

Test Start: 2013.11.23 @ 05:22:00

GENERAL INFORMATION:

Formation: **Viola**
 Deviated: No Whipstock: ft (KB)
 Time Tool Opened: 08:03:00
 Time Test Ended: 12:40:00
 Interval: **3714.00 ft (KB) To 3862.00 ft (KB) (TVD)**
 Total Depth: 3862.00 ft (KB) (TVD)
 Hole Diameter: 7.88 inches Hole Condition: Fair
 Test Type: Conventional Bottom Hole (Initial)
 Tester: Dustin Ellis
 Unit No: 3315-Great Bend-40
 Reference Elevations: 1972.00 ft (KB)
 1961.00 ft (CF)
 KB to GR/CF: 11.00 ft

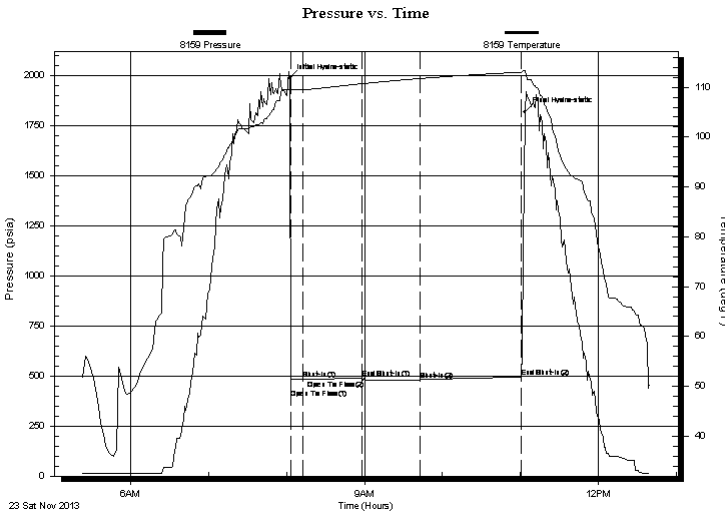
Serial #: 8159

Outside

Press@RunDepth: 478.93 psia @ 3859.87 ft (KB) Capacity: 5000.00 psia
 Start Date: 2013.11.23 End Date: 2013.11.23 Last Calib.: 2013.11.23
 Start Time: 05:22:00 End Time: 12:40:00 Time On Btm: 2013.11.23 @ 08:02:30
 Time Off Btm: 2013.11.23 @ 11:03:30

TEST COMMENT: 1st Open 10 minutes Strong blow built to bottom bucket 8 minutes.
 1st Shut in 45 minutes No blow back.
 2nd Open 45 minutes Strong blow built to bottom bucket instantly.
 2nd Shut in 75 minutes No blow back

PRESSURE SUMMARY



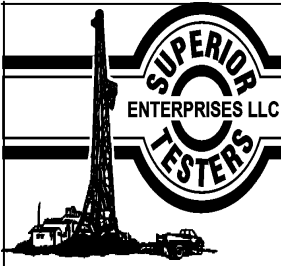
Time (Min.)	Pressure (psia)	Temp (deg F)	Annotation
0	1988.88	109.32	Initial Hydro-static
1	391.22	108.77	Open To Flow (1)
10	485.79	109.52	Shut-In(1)
56	490.09	110.70	End Shut-In(1)
58	481.63	110.75	Open To Flow (2)
100	478.93	111.75	Shut-In(2)
179	494.27	113.03	End Shut-In(2)
181	1820.39	113.38	Final Hydro-static

Recovery

Length (ft)	Description	Volume (bbl)
30.00	Mud 100%	0.42

Gas Rates

Choke (inches)	Pressure (psia)	Gas Rate (Mcf/d)



DRILL STEM TEST REPORT

Younger Energy Company

27-21s-15w-Pawnee

9415 East Harry Street Suit
403 Wichita Ks.67207

Just 1-27

Job Ticket: 18464

DST#: 1

ATTN: Keith Reavis

Test Start: 2013.11.23 @ 05:22:00

GENERAL INFORMATION:

Formation: **Viola**

Deviated: No Whipstock: ft (KB)

Time Tool Opened: 08:03:00

Time Test Ended: 12:40:00

Test Type: Conventional Bottom Hole (Initial)

Tester: Dustin Ellis

Unit No: 3315-Great Bend-40

Interval: 3714.00 ft (KB) To 3862.00 ft (KB) (TVD)

Reference Elevations: 1972.00 ft (KB)

Total Depth: 3862.00 ft (KB) (TVD)

1961.00 ft (CF)

Hole Diameter: 7.88 inches Hole Condition: Fair

KB to GR/CF: 11.00 ft

Serial #: 6731 Inside

Press@RunDepth: 494.67 psia @ 3858.87 ft (KB)

Capacity: 5000.00 psia

Start Date: 2013.11.23

End Date: 2013.11.23

Last Calib.: 2013.11.23

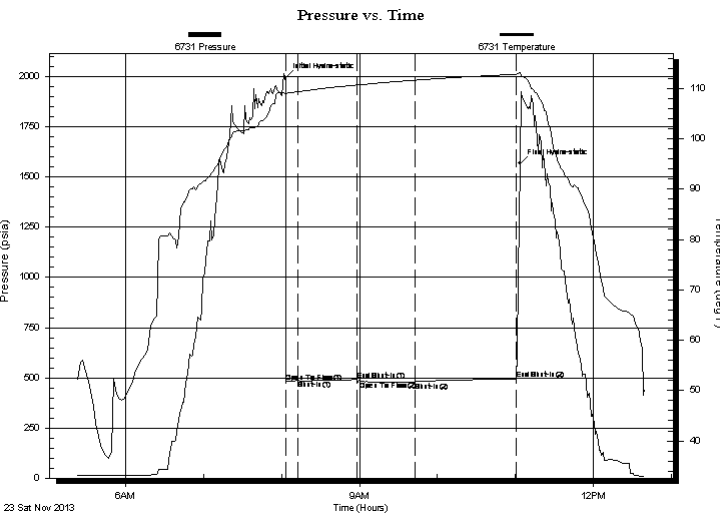
Start Time: 05:22:00

End Time: 12:40:00

Time On Btm: 2013.11.23 @ 08:03:00

Time Off Btm: 2013.11.23 @ 11:03:30

TEST COMMENT: 1st Open 10 minutes Strong blow built to bottom bucket 8 minutes.
1st Shut in 45 minutes No blow back.
2nd Open 45 minutes Strong blow built to bottom bucket instantly.
2nd Shut in 75 minutes No blow back



PRESSURE SUMMARY

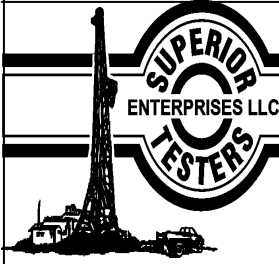
Time (Min.)	Pressure (psia)	Temp (deg F)	Annotation
0	1996.44	108.92	Initial Hydro-static
1	477.51	108.80	Open To Flow (1)
10	486.60	109.33	Shut-In(1)
55	490.67	110.67	End Shut-In(1)
57	481.85	110.72	Open To Flow (2)
100	479.35	111.61	Shut-In(2)
178	494.67	112.81	End Shut-In(2)
181	1567.62	113.16	Final Hydro-static

Recovery

Length (ft)	Description	Volume (bbl)
30.00	Mud 100%	0.42

Gas Rates

Choke (inches)	Pressure (psia)	Gas Rate (Mcf/d)



DRILL STEM TEST REPORT

TOOL DIAGRAM

Younger Energy Company

27-21s-15w-Pawnee

9415 East Harry Street Suit
403 Wichita Ks.67207

Jost 1-27

Job Ticket: 18464

DST#: 1

ATTN: Keith Reavis

Test Start: 2013.11.23 @ 05:22:00

Tool Information

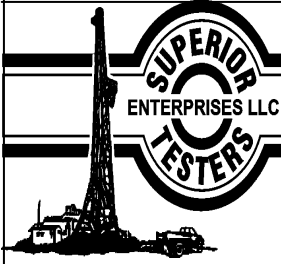
Drill Pipe:	Length: 3693.00 ft	Diameter: 3.80 inches	Volume: 51.80 bbl	Tool Weight: 2000.00 lb
Heavy Wt. Pipe:	Length: 0.00 ft	Diameter: 0.00 inches	Volume: 0.00 bbl	Weight set on Packer: 20000.00 lb
Drill Collar:	Length: 0.00 ft	Diameter: 0.00 inches	Volume: 0.00 bbl	Weight to Pull Loose: 72000.00 lb
			<u>Total Volume: 51.80 bbl</u>	Tool Chased 0.00 ft
Drill Pipe Above KB:	7.00 ft			String Weight: Initial 61000.00 lb
Depth to Top Packer:	3714.00 ft			Final 61000.00 lb
Depth to Bottom Packer:	ft			
Interval between Packers:	148.87 ft			
Tool Length:	176.87 ft			
Number of Packers:	2	Diameter: 6.75 inches		

Tool Comments:

Tool Description

Tool Description	Length (ft)	Serial No.	Position	Depth (ft)	Accum. Lengths
Shut-In Tool	5.00			3691.00	
Hydraulic Tool	5.00			3696.00	
Jars	6.00			3702.00	
Safety Joint	2.00			3704.00	
Packer	5.00			3709.00	28.00 Bottom Of Top Packer
Packer	5.00			3714.00	
Anchor	5.00			3719.00	
Change Over Sub	0.75			3719.75	
Drill Pipe	95.37			3815.12	
Change Over Sub	0.75			3815.87	
Anchor	42.00			3857.87	
Recorder	1.00	6731	Inside	3858.87	
Recorder	1.00	8159	Outside	3859.87	
Bullnose	3.00			3862.87	148.87 Bottom Packers & Anchor

Total Tool Length: 176.87



DRILL STEM TEST REPORT

FLUID SUMMARY

Younger Energy Company

27-21s-15w-Pawnee

9415 East Harry Street Suit
403 Wichita Ks.67207

Jost 1-27

Job Ticket: 18464

DST#: 1

ATTN: Keith Reavis

Test Start: 2013.11.23 @ 05:22:00

Mud and Cushion Information

Mud Type: Gel Chem

Cushion Type:

Oil API:

deg API

Mud Weight: 9.00 lb/gal

Cushion Length: ft

Water Salinity: ppm

Viscosity: 54.00 sec/qt

Cushion Volume: bbl

Water Loss: 7.20 in³

Gas Cushion Type:

Resistivity: ohm.m

Gas Cushion Pressure: psia

Salinity: 5400.00 ppm

Filter Cake: 1.00 inches

Recovery Information

Recovery Table

Length ft	Description	Volume bbl
30.00	Mud 100%	0.421

Total Length: 30.00 ft Total Volume: 0.421 bbl

Num Fluid Samples: 0

Num Gas Bombs: 0

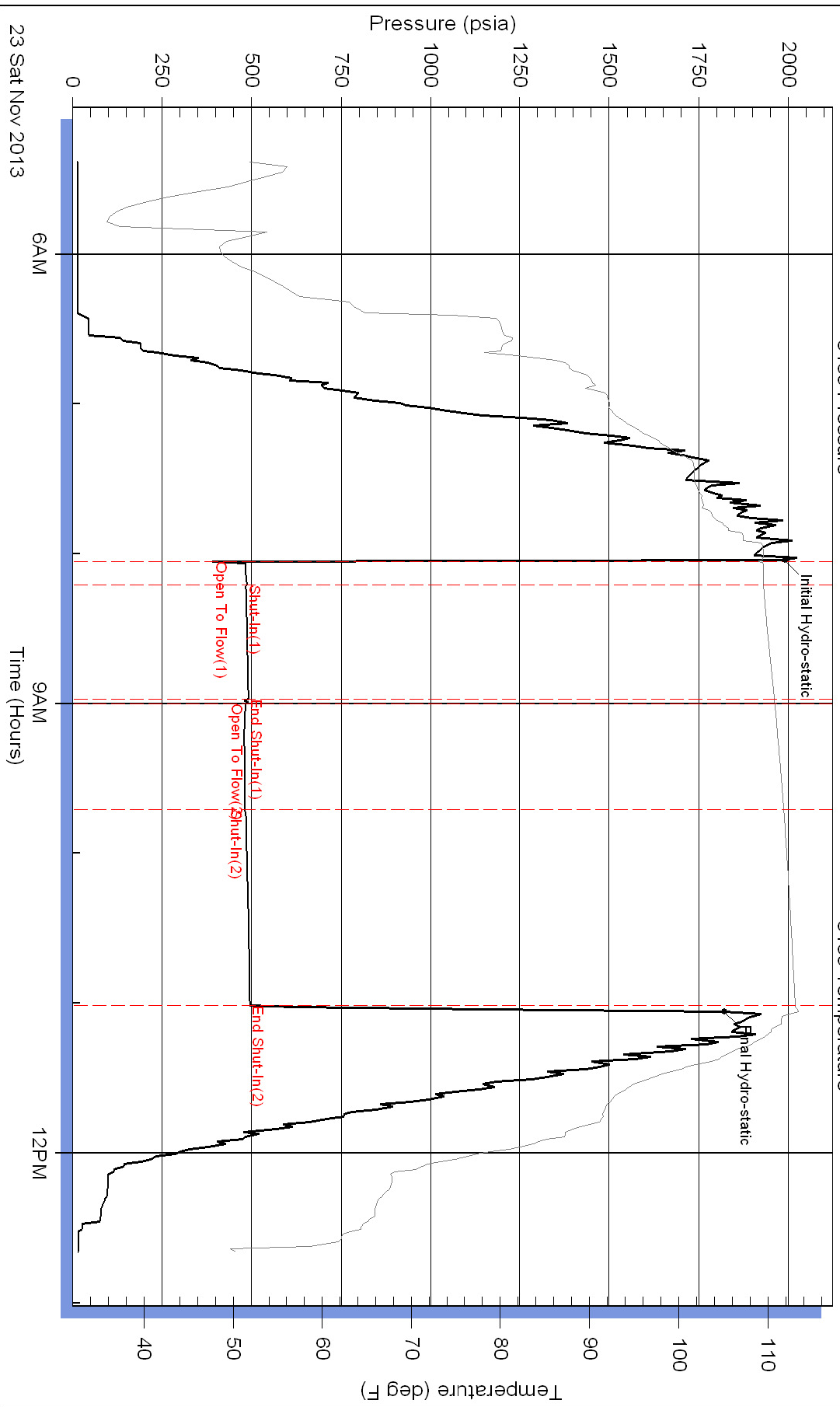
Serial #:

Laboratory Name:

Laboratory Location:

Recovery Comments:

Pressure vs. Time



Pressure vs. Time

