



DRILL STEM TEST REPORT

Prepared For: **DaMar Resources Inc**

PO Box 70
Hays KS 67601-3805

ATTN: Randy Kilian

Romme #1

22-13s-17w Ellis,KS

Start Date: 2013.08.25 @ 02:37:02

End Date: 2013.08.25 @ 10:38:32

Job Ticket #: 041753 DST #: 1

Trilobite Testing, Inc
PO Box 362 Hays, KS 67601
ph: 785-625-4778 fax: 785-625-5620

Printed: 2013.09.04 @ 11:43:59



TRILOBITE TESTING, INC.

DRILL STEM TEST REPORT

DaMar Resources Inc
 PO Box 70
 Hays KS 67601-3805
 ATTN: Randy Kilian

22-13s-17w Ellis,KS

Romme #1

Job Ticket: 041753

DST#: 1

Test Start: 2013.08.25 @ 02:37:02

GENERAL INFORMATION:

Formation: **Toronto - LKC C**

Deviated: No Whipstock: ft (KB)

Time Tool Opened: 04:51:02

Time Test Ended: 10:38:32

Test Type: Conventional Bottom Hole (Initial)

Tester: Jeff Brown

Unit No: 67

Interval: 3252.00 ft (KB) To 3340.00 ft (KB) (TVD)

Reference Elevations: 1998.00 ft (KB)

Total Depth: 3340.00 ft (KB) (TVD)

1991.00 ft (CF)

Hole Diameter: 7.88 inches Hole Condition: Good

KB to GR/CF: 7.00 ft

Serial #: 6625 Outside

Press @ Run Depth: 566.77 psig @ 3322.00 ft (KB)

Capacity: 8000.00 psig

Start Date: 2013.08.25

End Date:

2013.08.25

Last Calib.:

2013.08.25

Start Time: 02:37:03

End Time:

10:36:32

Time On Btm:

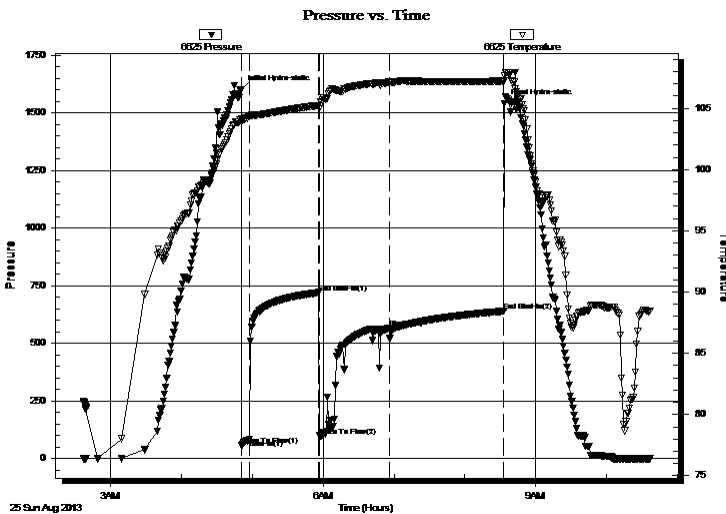
2013.08.25 @ 04:50:32

Time Off Btm:

2013.08.25 @ 08:33:32

TEST COMMENT: IFP=Fair blow built to 8 in
 ISI=Weak surface blow back died out in 12 min
 FFP=Fair blow Built to 9 in
 FSI=Dead no blow back

PRESSURE SUMMARY



Time (Min.)	Pressure (psig)	Temp (deg F)	Annotation
0	1602.59	104.10	Initial Hydro-static
1	55.47	103.88	Open To Flow (1)
7	83.25	104.33	Shut-In(1)
66	719.76	105.22	End Shut-In(1)
66	97.79	104.98	Open To Flow (2)
126	566.77	107.14	Shut-In(2)
223	639.50	107.22	End Shut-In(2)
223	1539.26	107.65	Final Hydro-static

Recovery

Length (ft)	Description	Volume (bbl)
173.00	Mud with oil spots	2.15

Gas Rates

	Choke (inches)	Pressure (psig)	Gas Rate (Mcf/d)



**TRILOBITE
TESTING, INC.**

DRILL STEM TEST REPORT

TOOL DIAGRAM

DaMar Resources Inc

22-13s-17w Ellis,KS

PO Box 70
Hays KS 67601-3805

Romme #1

Job Ticket: 041753

DST#: 1

ATTN: Randy Kilian

Test Start: 2013.08.25 @ 02:37:02

Tool Information

Drill Pipe:	Length: 3221.00 ft	Diameter: 3.80 inches	Volume: 45.18 bbl	Tool Weight: 2000.00 lb
Heavy Wt. Pipe:	Length: 0.00 ft	Diameter: 2.70 inches	Volume: 0.00 bbl	Weight set on Packer: 2000.00 lb
Drill Collar:	Length: 30.00 ft	Diameter: 2.25 inches	Volume: 0.15 bbl	Weight to Pull Loose: 52000.00 lb
			<u>Total Volume: 45.33 bbl</u>	Tool Chased 0.00 ft
Drill Pipe Above KB:	22.00 ft			String Weight: Initial 46000.00 lb
Depth to Top Packer:	3252.00 ft			Final 480000.0 lb
Depth to Bottom Packer:	ft			
Interval between Packers:	88.00 ft			
Tool Length:	111.00 ft			
Number of Packers:	2	Diameter: 6.75 inches		

Tool Comments:

Tool Description

Length (ft) Serial No. Position Depth (ft) Accum. Lengths

Tool Description	Length (ft)	Serial No.	Position	Depth (ft)	Accum. Lengths
Change Over Sub	1.00			3230.00	
Shut In Tool	5.00			3235.00	
Hydraulic tool	5.00			3240.00	
Safety Joint	3.00			3243.00	
Packer	4.00			3247.00	23.00 Bottom Of Top Packer
Packer	5.00			3252.00	
Stubb	1.00			3253.00	
Perforations	4.00			3257.00	
Change Over Sub	1.00			3258.00	
Drill Pipe	63.00			3321.00	
Change Over Sub	1.00			3322.00	
Recorder	0.00	6625	Outside	3322.00	
Recorder	0.00	8679	Inside	3322.00	
Perforations	15.00			3337.00	
Bullnose	3.00			3340.00	88.00 Bottom Packers & Anchor

Total Tool Length: 111.00



**TRILOBITE
TESTING, INC.**

DRILL STEM TEST REPORT

FLUID SUMMARY

DaMar Resources Inc
PO Box 70
Hays KS 67601-3805
ATTN: Randy Kilian

22-13s-17w Ellis,KS
Romme #1
Job Ticket: 041753 **DST#: 1**
Test Start: 2013.08.25 @ 02:37:02

Mud and Cushion Information

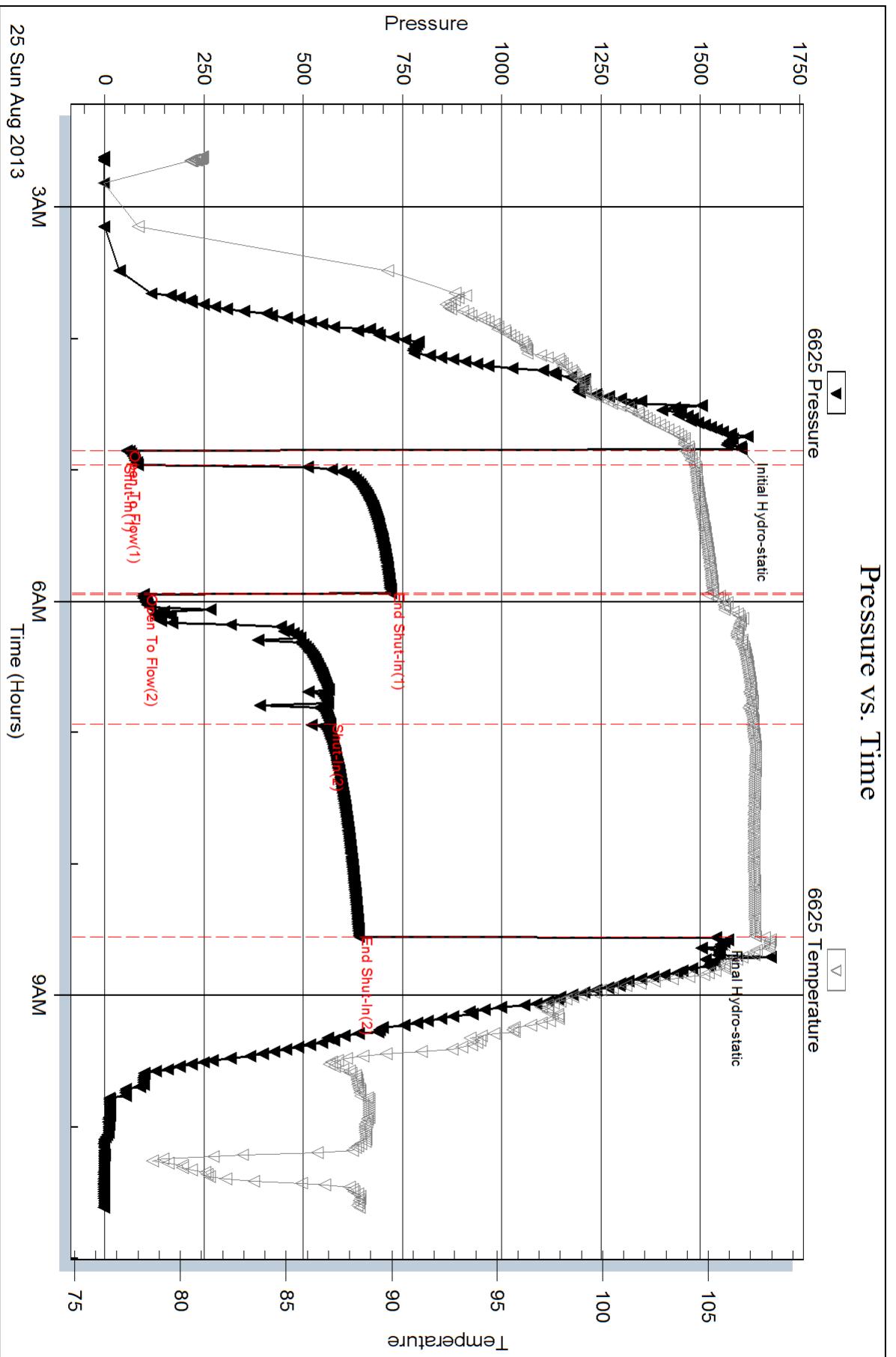
Mud Type: Gel Chem	Cushion Type:	Oil API:	deg API
Mud Weight: 8.00 lb/gal	Cushion Length: ft	Water Salinity:	ppm
Viscosity: 60.00 sec/qt	Cushion Volume: bbl		
Water Loss: 7.98 in ³	Gas Cushion Type:		
Resistivity: ohm.m	Gas Cushion Pressure: psig		
Salinity: 2500.00 ppm			
Filter Cake: inches			

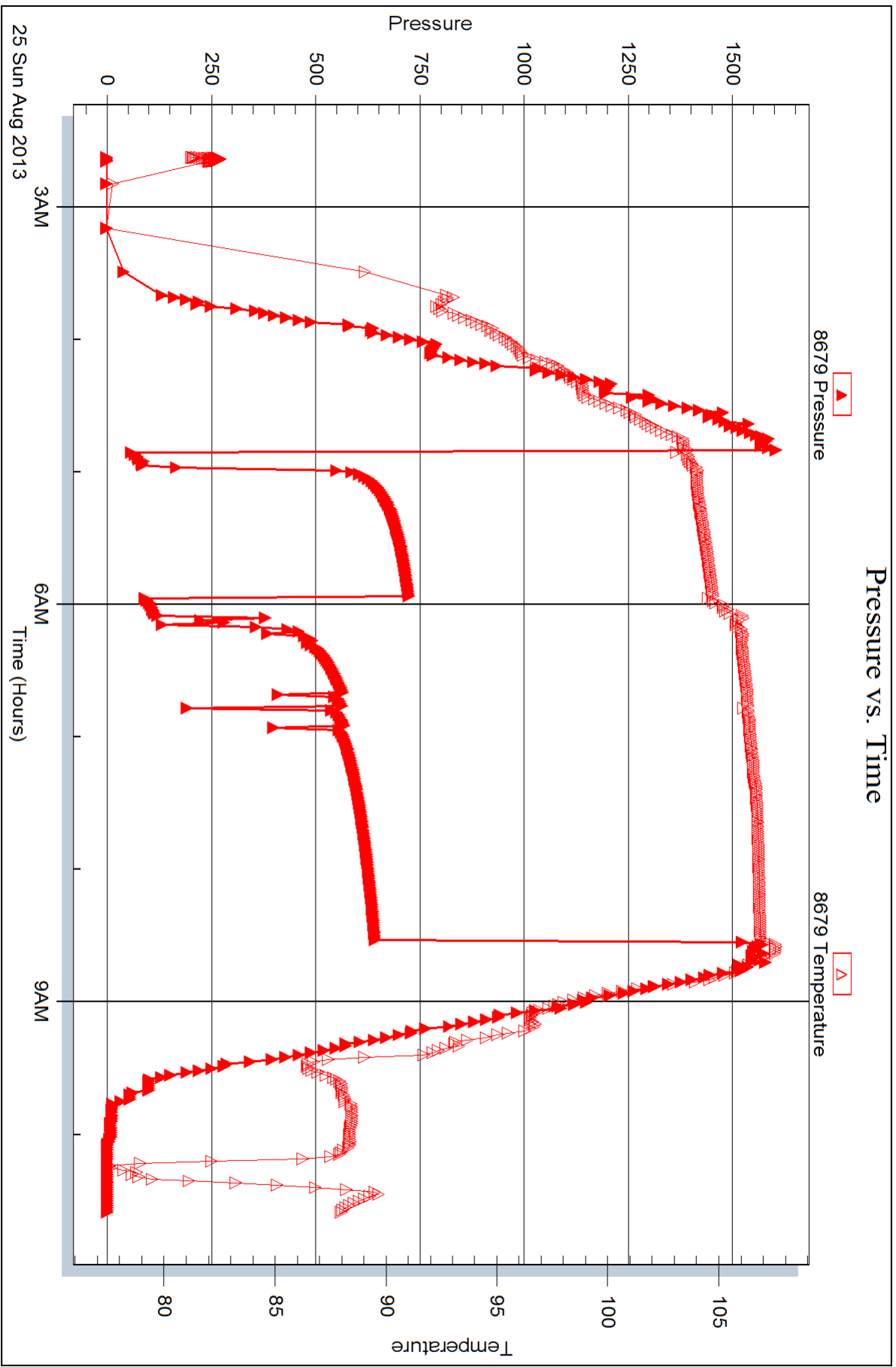
Recovery Information

Recovery Table

Length ft	Description	Volume bbl
173.00	Mud w ith oil spots	2.153

Total Length: 173.00 ft Total Volume: 2.153 bbl
 Num Fluid Samples: 0 Num Gas Bombs: 0 Serial #:
 Laboratory Name: Laboratory Location:
 Recovery Comments:







DRILL STEM TEST REPORT

Prepared For: **DaMar Resources Inc**

PO Box 70
Hays KS 67601-3805

ATTN: Randy Kilian

Romme #1

22-13s-17w Ellis,KS

Start Date: 2013.08.25 @ 18:13:49

End Date: 2013.08.26 @ 01:43:19

Job Ticket #: 041754 DST #: 2

Trilobite Testing, Inc
PO Box 362 Hays, KS 67601
ph: 785-625-4778 fax: 785-625-5620

Printed: 2013.09.04 @ 11:43:24



TRILOBITE TESTING, INC.

DRILL STEM TEST REPORT

DaMar Resources Inc
 PO Box 70
 Hays KS 67601-3805
 ATTN: Randy Kilian

22-13s-17w Ellis,KS

Romme #1

Job Ticket: 041754

DST#: 2

Test Start: 2013.08.25 @ 18:13:49

GENERAL INFORMATION:

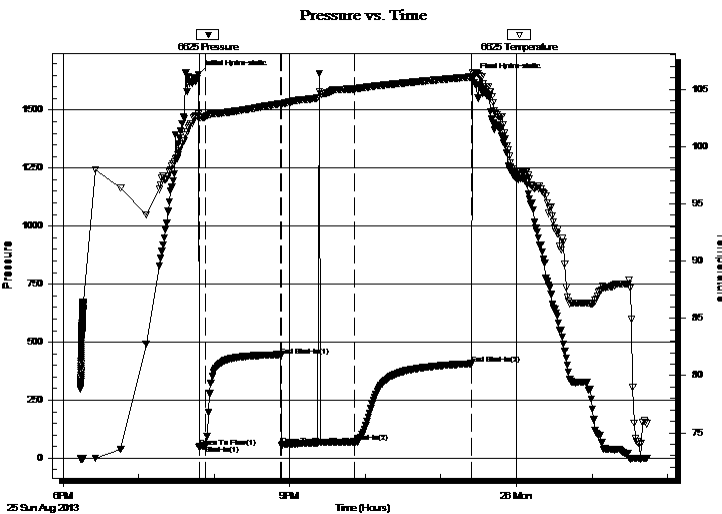
Formation: **LKC-C-G**
 Deviated: No Whipstock: ft (KB)
 Time Tool Opened: 19:47:49
 Time Test Ended: 01:43:19
 Interval: **3310.00 ft (KB) To 3412.00 ft (KB) (TVD)**
 Total Depth: 3412.00 ft (KB) (TVD)
 Hole Diameter: 7.88 inches Hole Condition: Good
 Test Type: Conventional Bottom Hole (Reset)
 Tester: Jeff Brown
 Unit No: 67
 Reference Elevations: 1998.00 ft (KB)
 1991.00 ft (CF)
 KB to GR/CF: 7.00 ft

Serial #: 6625

Outside

Press @ Run Depth: 70.14 psig @ 3380.00 ft (KB) Capacity: 8000.00 psig
 Start Date: 2013.08.25 End Date: 2013.08.26 Last Calib.: 2013.08.26
 Start Time: 18:13:50 End Time: 01:43:19 Time On Btm: 2013.08.25 @ 19:47:19
 Time Off Btm: 2013.08.25 @ 23:25:19

TEST COMMENT: IFP=Weak blow built to 1 in
 ISI=Dead no blow back
 FFP=Weak blow built to 1 in- In 30 min- Flushed tool- Weak blow built to 3/4 in
 FSI=Dead no blow back



PRESSURE SUMMARY

Time (Min.)	Pressure (psig)	Temp (deg F)	Annotation
0	1653.94	102.83	Initial Hydro-static
1	47.34	102.56	Open To Flow (1)
6	54.66	102.62	Shut-In(1)
66	441.66	103.76	End Shut-In(1)
66	57.38	103.74	Open To Flow (2)
124	70.14	105.03	Shut-In(2)
217	407.44	106.09	End Shut-In(2)
218	1638.91	106.48	Final Hydro-static

Recovery

Length (ft)	Description	Volume (bbl)
55.00	Mud w with a scum of oil	0.50

Gas Rates

	Choke (inches)	Pressure (psig)	Gas Rate (Mcf/d)

* Recovery from multiple tests



**TRILOBITE
TESTING, INC.**

DRILL STEM TEST REPORT

TOOL DIAGRAM

DaMar Resources Inc

22-13s-17w Ellis,KS

PO Box 70
Hays KS 67601-3805

Romme #1

Job Ticket: 041754

DST#: 2

ATTN: Randy Kilian

Test Start: 2013.08.25 @ 18:13:49

Tool Information

Drill Pipe:	Length: 3284.00 ft	Diameter: 3.80 inches	Volume: 46.07 bbl	Tool Weight: 2000.00 lb
Heavy Wt. Pipe:	Length: 0.00 ft	Diameter: 2.70 inches	Volume: 0.00 bbl	Weight set on Packer: 20000.00 lb
Drill Collar:	Length: 30.00 ft	Diameter: 2.25 inches	Volume: 0.15 bbl	Weight to Pull Loose: 48000.00 lb
			<u>Total Volume: 46.22 bbl</u>	Tool Chased 0.00 ft
Drill Pipe Above KB:	27.00 ft			String Weight: Initial 44000.00 lb
Depth to Top Packer:	3310.00 ft			Final 44000.00 lb
Depth to Bottom Packer:	ft			
Interval between Packers:	102.00 ft			
Tool Length:	125.00 ft			
Number of Packers:	2	Diameter: 6.75 inches		

Tool Comments:

Tool Description

Length (ft) Serial No. Position Depth (ft) Accum. Lengths

Tool Description	Length (ft)	Serial No.	Position	Depth (ft)	Accum. Lengths
Change Over Sub	1.00			3288.00	
Shut In Tool	5.00			3293.00	
Hydraulic tool	5.00			3298.00	
Safety Joint	3.00			3301.00	
Packer	4.00			3305.00	23.00 Bottom Of Top Packer
Packer	5.00			3310.00	
Stubb	1.00			3311.00	
Perforations	4.00			3315.00	
Change Over Sub	1.00			3316.00	
Drill Pipe	63.00			3379.00	
Change Over Sub	1.00			3380.00	
Recorder	0.00	6625	Outside	3380.00	
Recorder	0.00	8679	Inside	3380.00	
Perforations	29.00			3409.00	
Bullnose	3.00			3412.00	102.00 Bottom Packers & Anchor

Total Tool Length: 125.00



**TRILOBITE
TESTING, INC.**

DRILL STEM TEST REPORT

FLUID SUMMARY

DaMar Resources Inc
PO Box 70
Hays KS 67601-3805
ATTN: Randy Kilian

22-13s-17w Ellis,KS
Romme #1
Job Ticket: 041754 **DST#: 2**
Test Start: 2013.08.25 @ 18:13:49

Mud and Cushion Information

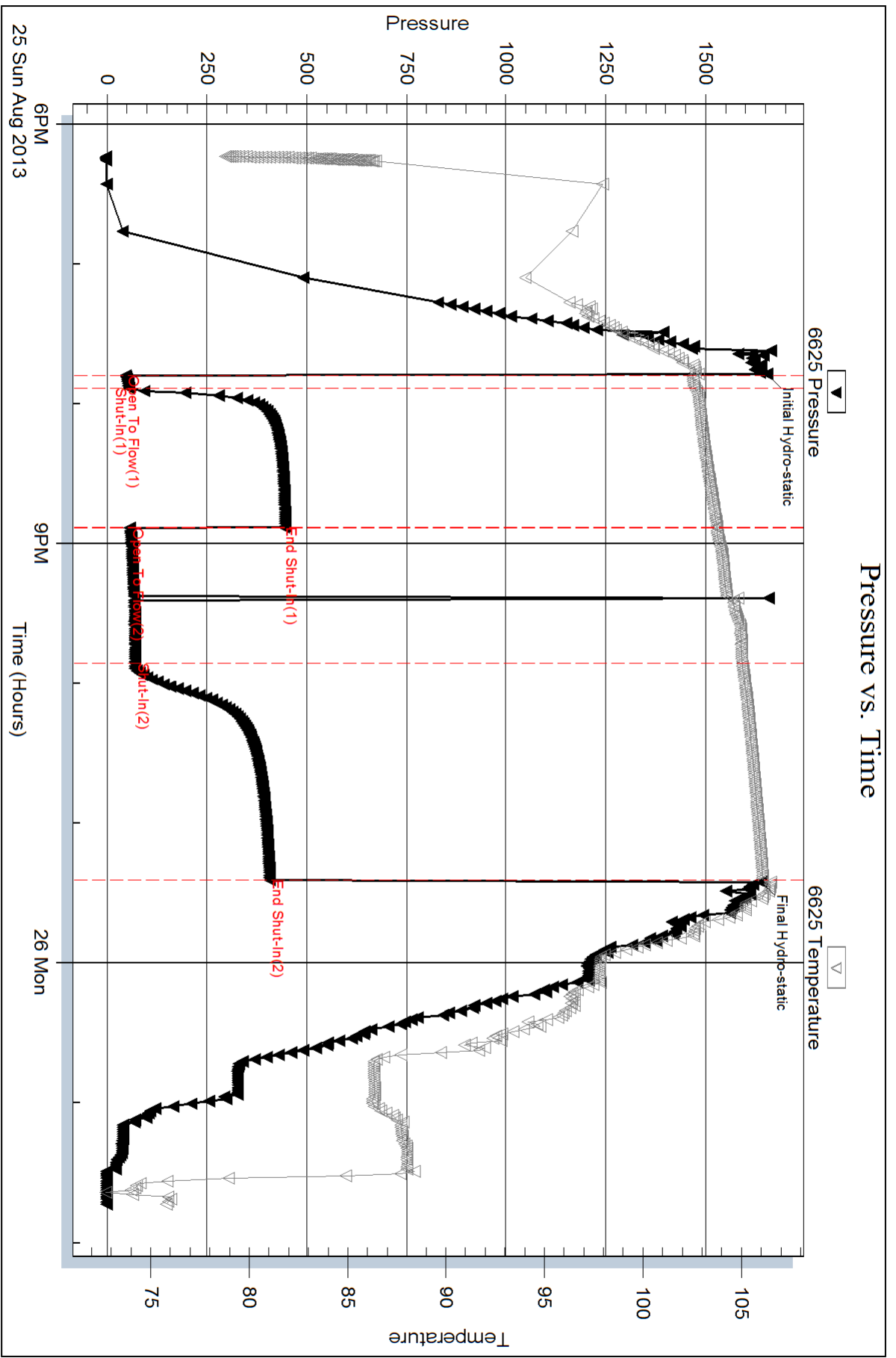
Mud Type: Gel Chem	Cushion Type:	Oil API:	deg API
Mud Weight: 9.00 lb/gal	Cushion Length: ft	Water Salinity:	ppm
Viscosity: 44.00 sec/qt	Cushion Volume: bbl		
Water Loss: 8.78 in ³	Gas Cushion Type:		
Resistivity: ohm.m	Gas Cushion Pressure: psig		
Salinity: 5500.00 ppm			
Filter Cake: inches			

Recovery Information

Recovery Table

Length ft	Description	Volume bbl
55.00	Mud with a scum of oil	0.498

Total Length: 55.00 ft Total Volume: 0.498 bbl
Num Fluid Samples: 0 Num Gas Bombs: 0 Serial #:
Laboratory Name: Laboratory Location:
Recovery Comments:



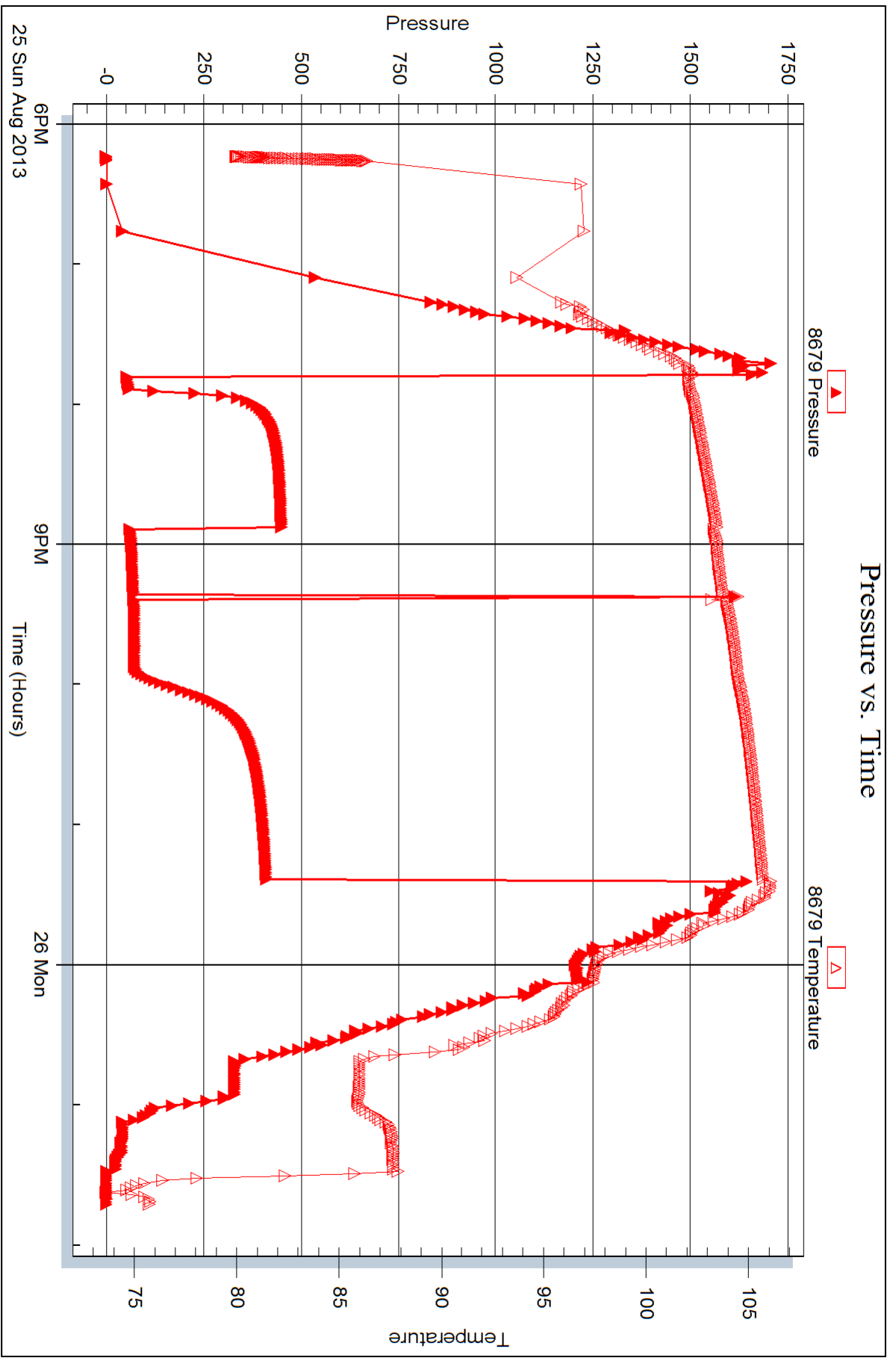
Serial #: 8679

Inside

DaMar Resources Inc

Romme #1

DST Test Number: 2



Trilobite Testing, Inc

Ref. No: 041754

Printed: 2013.09.04 @ 11:43:25



DRILL STEM TEST REPORT

Prepared For: **DaMar Resources Inc**

PO Box 70
Hays KS 67601-3805

ATTN: Randy Kilian

Romme #1

22-13s-17w Ellis,KS

Start Date: 2013.08.26 @ 17:37:25

End Date: 2013.08.27 @ 01:28:25

Job Ticket #: 041755 DST #: 3

Trilobite Testing, Inc
PO Box 362 Hays, KS 67601
ph: 785-625-4778 fax: 785-625-5620

Printed: 2013.09.04 @ 11:42:25



TRILOBITE TESTING, INC.

DRILL STEM TEST REPORT

DaMar Resources Inc
 PO Box 70
 Hays KS 67601-3805
 ATTN: Randy Kilian

22-13s-17w Ellis, KS

Romme #1

Job Ticket: 041755

DST#: 3

Test Start: 2013.08.26 @ 17:37:25

GENERAL INFORMATION:

Formation: **Toronto - LKC B**

Deviated: No Whipstock: ft (KB)

Time Tool Opened: 19:33:55

Time Test Ended: 01:28:25

Test Type: Conventional Straddle (Reset)

Tester: Jeff Brown

Unit No: 67

Interval: 3251.00 ft (KB) To 3336.00 ft (KB) (TVD)

Total Depth: 3412.00 ft (KB) (TVD)

Hole Diameter: 7.88 inches Hole Condition: Good

Reference Elevations: 1998.00 ft (KB)

1991.00 ft (CF)

KB to GR/CF: 7.00 ft

Serial #: 6625 Inside

Press @ Run Depth: 153.51 psig @ 3322.00 ft (KB)

Start Date: 2013.08.26

End Date: 2013.08.27

Start Time: 17:37:26

End Time: 01:23:25

Capacity: 8000.00 psig

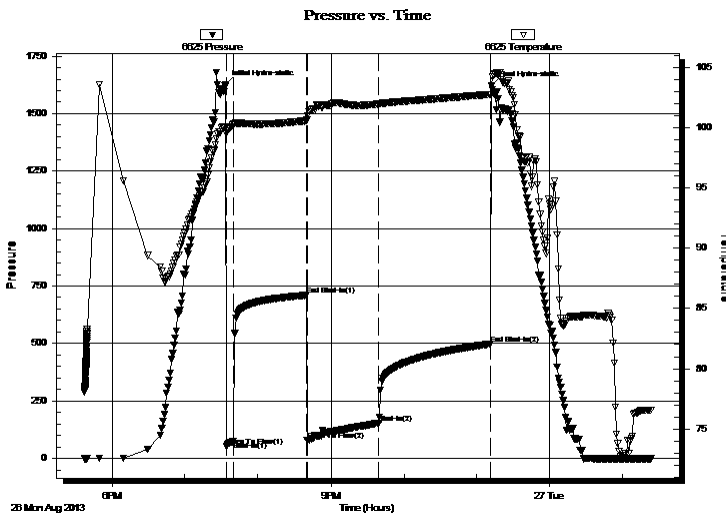
Last Calib.: 2013.08.27

Time On Btm: 2013.08.26 @ 19:33:25

Time Off Btm: 2013.08.26 @ 23:11:55

TEST COMMENT: IFP=Fair blow built to 4 1/2 min
 ISI=Dead no blow back
 FFP=Good blow BOB in 19 min
 FSI=Dead no blow back

PRESSURE SUMMARY



Time (Min.)	Pressure (psig)	Temp (deg F)	Annotation
0	1626.02	100.00	Initial Hydro-static
1	50.94	99.49	Open To Flow (1)
7	73.48	100.31	Shut-In(1)
67	709.80	100.59	End Shut-In(1)
67	77.59	100.68	Open To Flow (2)
126	153.51	101.98	Shut-In(2)
218	497.72	102.77	End Shut-In(2)
219	1622.43	103.47	Final Hydro-static

Recovery

Length (ft)	Description	Volume (bbl)
126.00	GWM With Oil Speckles 5%G 45%M 55%	1.49
104.00	Mud With Oil Speckles	1.46

Gas Rates

Choke (inches)	Pressure (psig)	Gas Rate (Mcf/d)

* Recovery from multiple tests



**TRILOBITE
TESTING, INC.**

DRILL STEM TEST REPORT

TOOL DIAGRAM

DaMar Resources Inc
PO Box 70
Hays KS 67601-3805
ATTN: Randy Kilian

22-13s-17w Ellis,KS
Romme #1
Job Ticket: 041755 **DST#: 3**
Test Start: 2013.08.26 @ 17:37:25

Tool Information

Drill Pipe:	Length: 3221.00 ft	Diameter: 3.80 inches	Volume: 45.18 bbl	Tool Weight: 2200.00 lb
Heavy Wt. Pipe:	Length: 0.00 ft	Diameter: 2.70 inches	Volume: 0.00 bbl	Weight set on Packer: 22000.00 lb
Drill Collar:	Length: 30.00 ft	Diameter: 2.25 inches	Volume: 0.15 bbl	Weight to Pull Loose: 54000.00 lb
			<u>Total Volume: 45.33 bbl</u>	Tool Chased 0.00 ft
Drill Pipe Above KB:	23.00 ft			String Weight: Initial 44000.00 lb
Depth to Top Packer:	3251.00 ft			Final 46000.00 lb
Depth to Bottom Packer:	3336.00 ft			
Interval between Packers:	85.00 ft			
Tool Length:	184.00 ft			
Number of Packers:	2	Diameter: 6.75 inches		

Tool Comments:

Tool Description	Length (ft)	Serial No.	Position	Depth (ft)	Accum. Lengths
-------------------------	--------------------	-------------------	-----------------	-------------------	-----------------------

Change Over Sub	1.00			3229.00	
Shut In Tool	5.00			3234.00	
Hydraulic tool	5.00			3239.00	
Safety Joint	3.00			3242.00	
Packer	4.00			3246.00	23.00 Bottom Of Top Packer
Packer	5.00			3251.00	
Stubb	1.00			3252.00	
Perforations	5.00			3257.00	
Change Over Sub	1.00			3258.00	
Drill Pipe	63.00			3321.00	
Change Over Sub	1.00			3322.00	
Recorder	0.00	6625	Inside	3322.00	
Recorder	0.00	8679	Outside	3322.00	
Perforations	10.00			3332.00	
Blank Off Sub	1.00			3333.00	
Stubb	3.00			3336.00	85.00 Tool Interval
Packer	1.00			3337.00	
Stubb	1.00			3338.00	
Perforations	6.00			3344.00	
Recorder	0.00	8167	Below	3344.00	
Change Over Sub	1.00			3345.00	
Drill Pipe	63.00			3408.00	
Change Over Sub	1.00			3409.00	
Bullnose	3.00			3412.00	76.00 Bottom Packers & Anchor
Total Tool Length:	184.00				



**TRILOBITE
TESTING, INC.**

DRILL STEM TEST REPORT

FLUID SUMMARY

DaMar Resources Inc

22-13s-17w Ellis,KS

PO Box 70
Hays KS 67601-3805

Romme #1

Job Ticket: 041755

DST#: 3

ATTN: Randy Kilian

Test Start: 2013.08.26 @ 17:37:25

Mud and Cushion Information

Mud Type: Gel Chem

Cushion Type:

Oil API:

deg API

Mud Weight: 9.00 lb/gal

Cushion Length:

ft

Water Salinity:

ppm

Viscosity: 56.00 sec/qt

Cushion Volume:

bbbl

Water Loss: 7.98 in³

Gas Cushion Type:

Resistivity: ohm.m

Gas Cushion Pressure:

psig

Salinity: 5000.00 ppm

Filter Cake: inches

Recovery Information

Recovery Table

Length ft	Description	Volume bbl
126.00	GWM With Oil Speckles 5%G 45%M 55%W	1.494
104.00	Mud With Oil Speckles	1.459

Total Length: 230.00 ft Total Volume: 2.953 bbl

Num Fluid Samples: 0

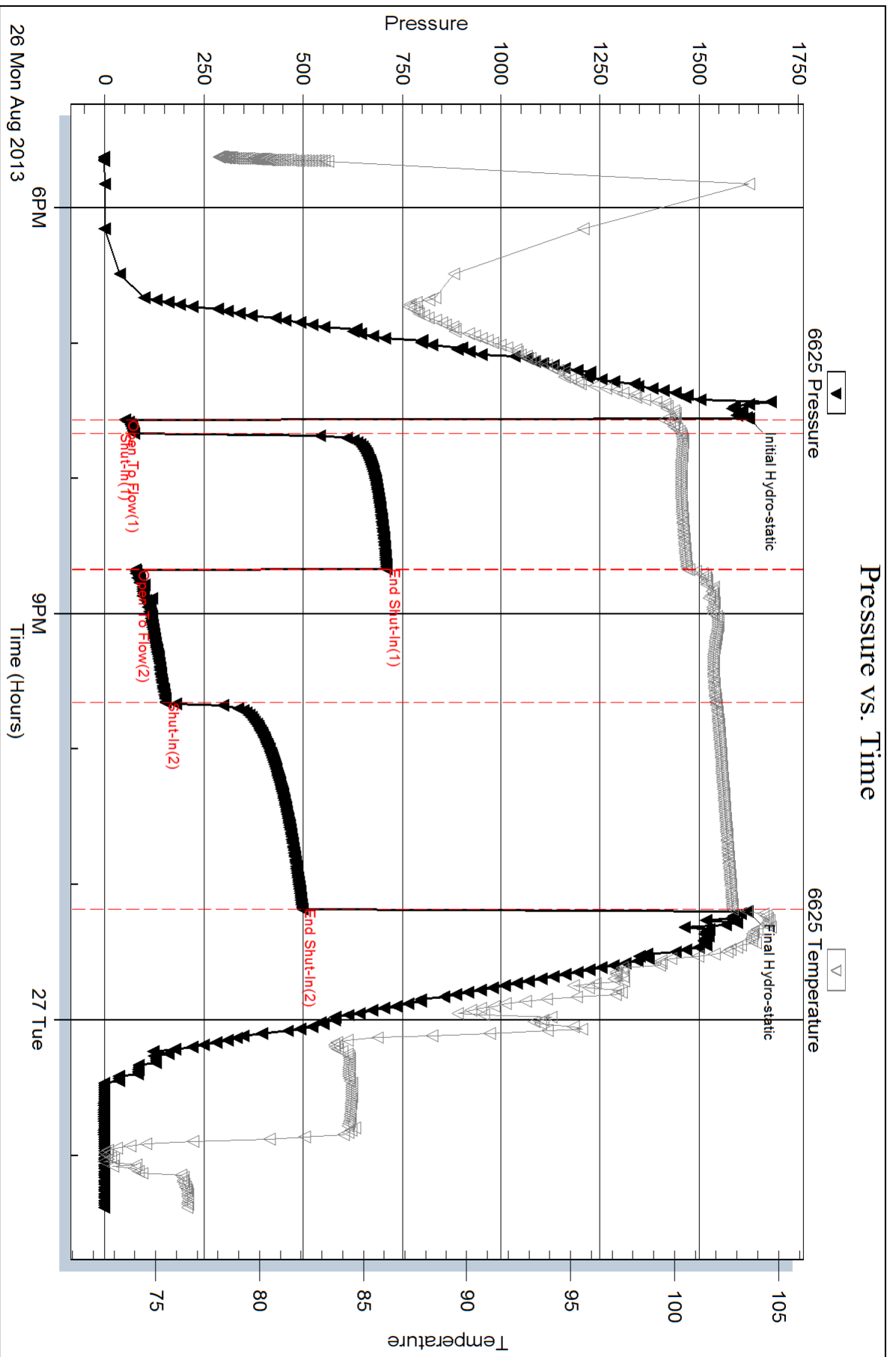
Num Gas Bombs: 0

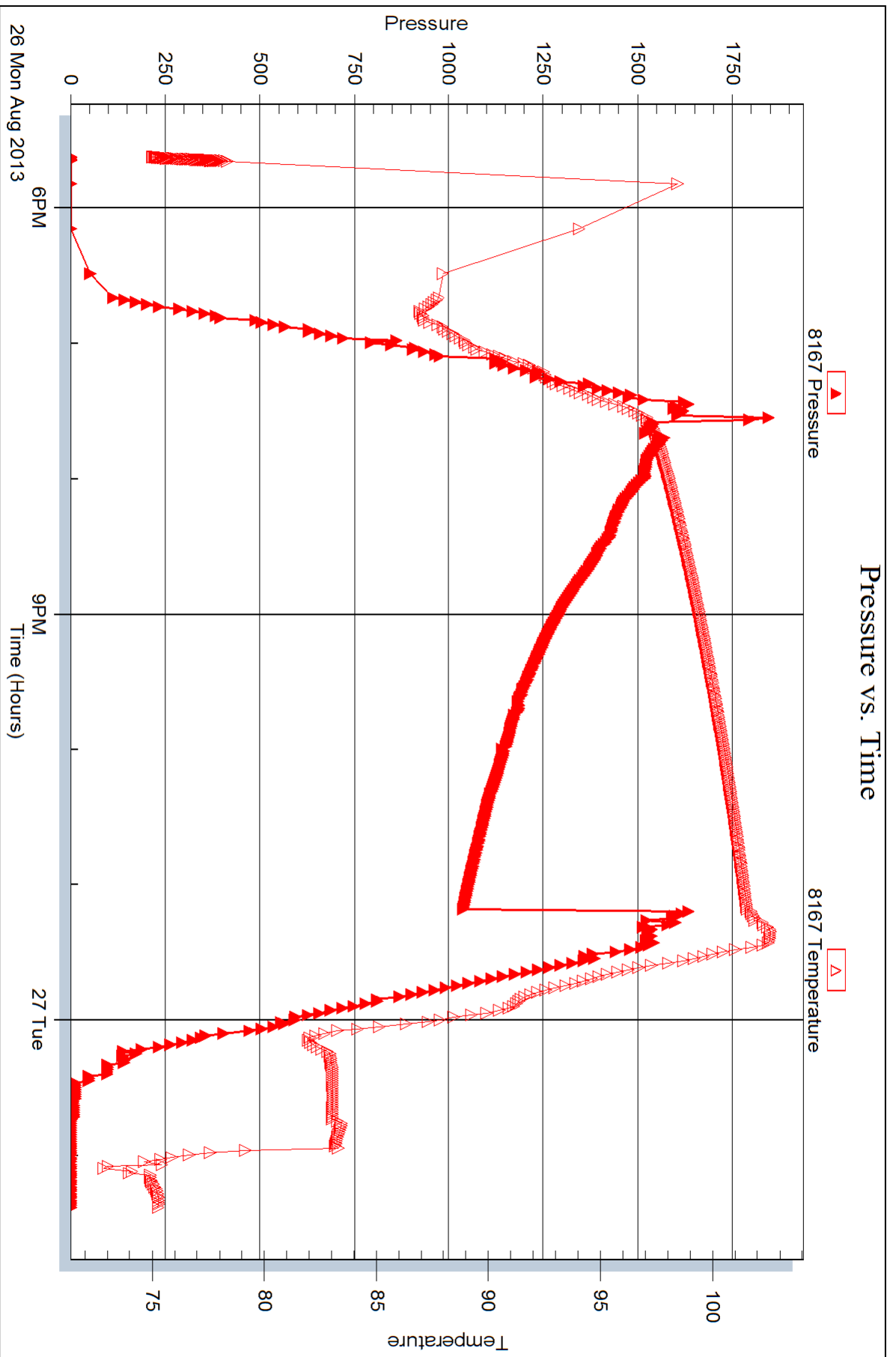
Serial #:

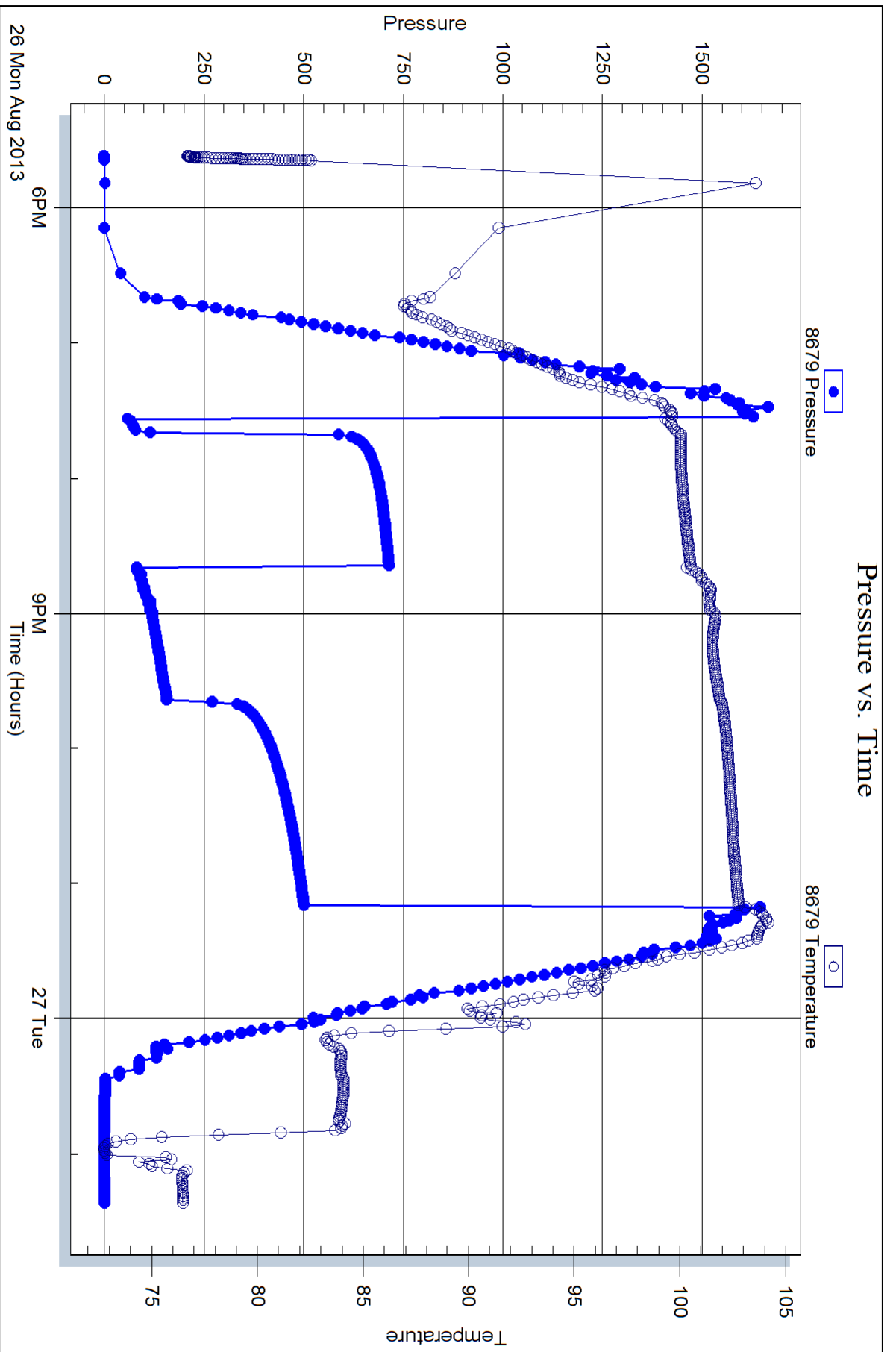
Laboratory Name:

Laboratory Location:

Recovery Comments:









DRILL STEM TEST REPORT

Prepared For: **DaMar Resources Inc**

PO Box 70
Hays KS 67601-3805

ATTN: Randy Kilian

Romme #1

22-13s-17w Ellis,KS

Start Date: 2013.08.27 @ 11:51:33

End Date: 2013.08.27 @ 18:03:03

Job Ticket #: 041757 DST #: 4

Trilobite Testing, Inc
PO Box 362 Hays, KS 67601
ph: 785-625-4778 fax: 785-625-5620

Printed: 2013.09.04 @ 11:41:21

DaMar Resources Inc
22-13s-17w Ellis,KS
Romme #1
DST # 4
LKC-H-L
2013.08.27



TRILOBITE TESTING, INC.

DRILL STEM TEST REPORT

DaMar Resources Inc
 PO Box 70
 Hays KS 67601-3805
 ATTN: Randy Kilian

22-13s-17w Ellis,KS

Romme #1

Job Ticket: 041757

DST#: 4

Test Start: 2013.08.27 @ 11:51:33

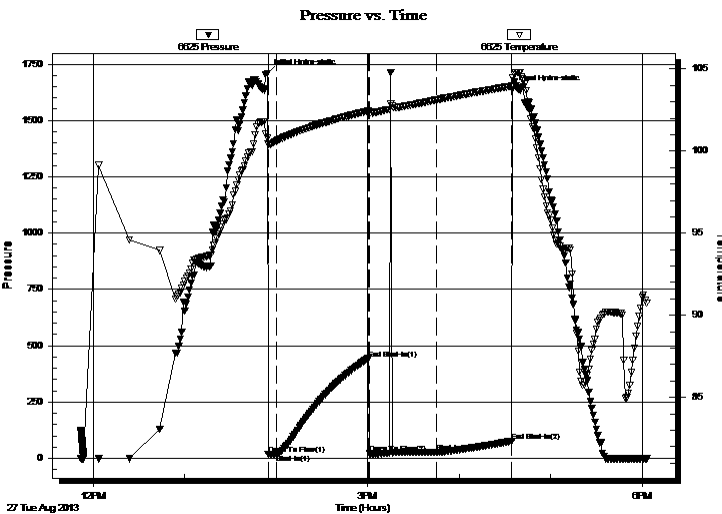
GENERAL INFORMATION:

Formation: **LKC H-L**
 Deviated: No Whipstock: ft (KB)
 Time Tool Opened: 13:54:33
 Time Test Ended: 18:03:03
 Interval: **3422.00 ft (KB) To 3530.00 ft (KB) (TVD)**
 Total Depth: 3530.00 ft (KB) (TVD)
 Hole Diameter: 7.88 inches Hole Condition: Good
 Test Type: Conventional Bottom Hole (Reset)
 Tester: Jeff Brown
 Unit No: 67
 Reference Elevations: 1998.00 ft (KB)
 1991.00 ft (CF)
 KB to GR/CF: 7.00 ft

Serial #: 6625 Outside

Press @ Run Depth: 27.05 psig @ 3522.00 ft (KB) Capacity: 8000.00 psig
 Start Date: 2013.08.27 End Date: 2013.08.27 Last Calib.: 2013.08.27
 Start Time: 11:51:34 End Time: 18:03:03 Time On Btm: 2013.08.27 @ 13:54:03
 Time Off Btm: 2013.08.27 @ 16:35:03

TEST COMMENT: IFP=Weak blow built to 1/4 in
 ISI=Dead no blow back
 FFP=Weak blow died out in 8 min - Flushed tool - Weak surface blow then died
 FSI=Dead no blow back



PRESSURE SUMMARY

Time (Min.)	Pressure (psig)	Temp (deg F)	Annotation
0	1706.68	100.79	Initial Hydro-static
1	17.35	100.45	Open To Flow (1)
6	18.90	100.60	Shut-In(1)
67	442.50	102.44	End Shut-In(1)
67	20.63	102.39	Open To Flow (2)
111	27.05	103.11	Shut-In(2)
161	76.97	103.95	End Shut-In(2)
161	1635.86	104.46	Final Hydro-static

Recovery

Length (ft)	Description	Volume (bbl)
10.00	Mud	0.05

Gas Rates

Choke (inches)	Pressure (psig)	Gas Rate (Mcf/d)

* Recovery from multiple tests



**TRILOBITE
TESTING, INC.**

DRILL STEM TEST REPORT

TOOL DIAGRAM

DaMar Resources Inc

22-13s-17w Ellis,KS

PO Box 70
Hays KS 67601-3805

Romme #1

Job Ticket: 041757

DST#: 4

ATTN: Randy Kilian

Test Start: 2013.08.27 @ 11:51:33

Tool Information

Drill Pipe:	Length: 3378.00 ft	Diameter: 3.80 inches	Volume: 47.38 bbl	Tool Weight: 2000.00 lb
Heavy Wt. Pipe:	Length: 0.00 ft	Diameter: 2.70 inches	Volume: 0.00 bbl	Weight set on Packer: 20000.00 lb
Drill Collar:	Length: 30.00 ft	Diameter: 2.25 inches	Volume: 0.15 bbl	Weight to Pull Loose: 58000.00 lb
			<u>Total Volume: 47.53 bbl</u>	Tool Chased 0.00 ft
Drill Pipe Above KB:	9.00 ft			String Weight: Initial 44000.00 lb
Depth to Top Packer:	3422.00 ft			Final 44000.00 lb
Depth to Bottom Packer:	ft			
Interval between Packers:	108.00 ft			
Tool Length:	131.00 ft			
Number of Packers:	2	Diameter: 6.75 inches		

Tool Comments:

Tool Description	Length (ft)	Serial No.	Position	Depth (ft)	Accum. Lengths
------------------	-------------	------------	----------	------------	----------------

Change Over Sub	1.00			3400.00	
Shut In Tool	5.00			3405.00	
Hydraulic tool	5.00			3410.00	
Safety Joint	3.00			3413.00	
Packer	4.00			3417.00	23.00 Bottom Of Top Packer
Packer	5.00			3422.00	
Stubb	1.00			3423.00	
Perforations	3.00			3426.00	
Change Over Sub	1.00			3427.00	
Drill Pipe	94.00			3521.00	
Change Over Sub	1.00			3522.00	
Recorder	0.00	6625	Outside	3522.00	
Recorder	0.00	8679	Inside	3522.00	
Perforations	5.00			3527.00	
Bullnose	3.00			3530.00	108.00 Bottom Packers & Anchor

Total Tool Length: 131.00



**TRILOBITE
TESTING, INC.**

DRILL STEM TEST REPORT

FLUID SUMMARY

DaMar Resources Inc
PO Box 70
Hays KS 67601-3805
ATTN: Randy Kilian

22-13s-17w Ellis,KS
Romme #1
Job Ticket: 041757 **DST#: 4**
Test Start: 2013.08.27 @ 11:51:33

Mud and Cushion Information

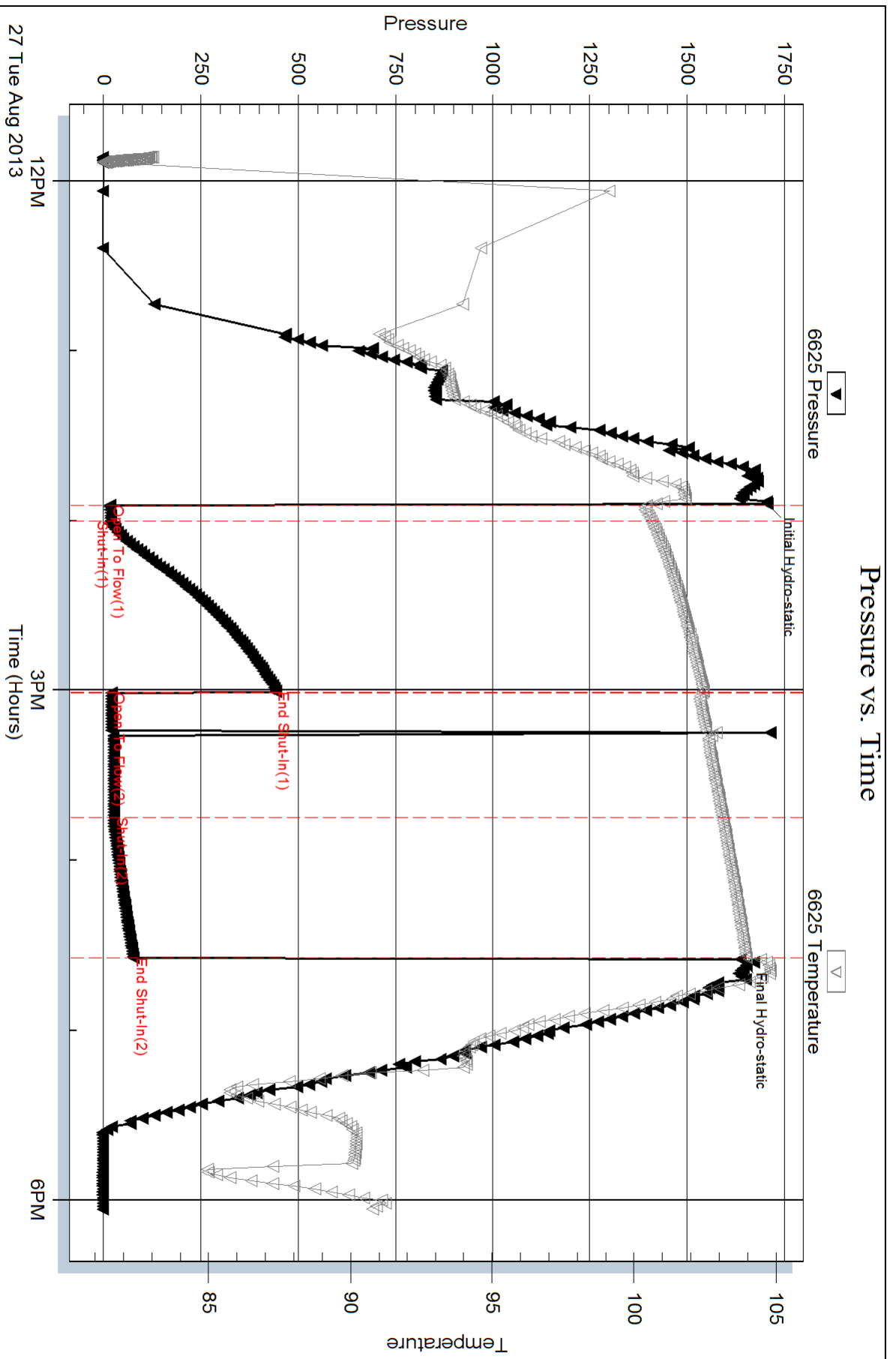
Mud Type: Gel Chem	Cushion Type:	Oil API:	deg API
Mud Weight: 9.00 lb/gal	Cushion Length: ft	Water Salinity:	ppm
Viscosity: 56.00 sec/qt	Cushion Volume: bbl		
Water Loss: 7.98 in ³	Gas Cushion Type:		
Resistivity: ohm.m	Gas Cushion Pressure: psig		
Salinity: 5000.00 ppm			
Filter Cake: inches			

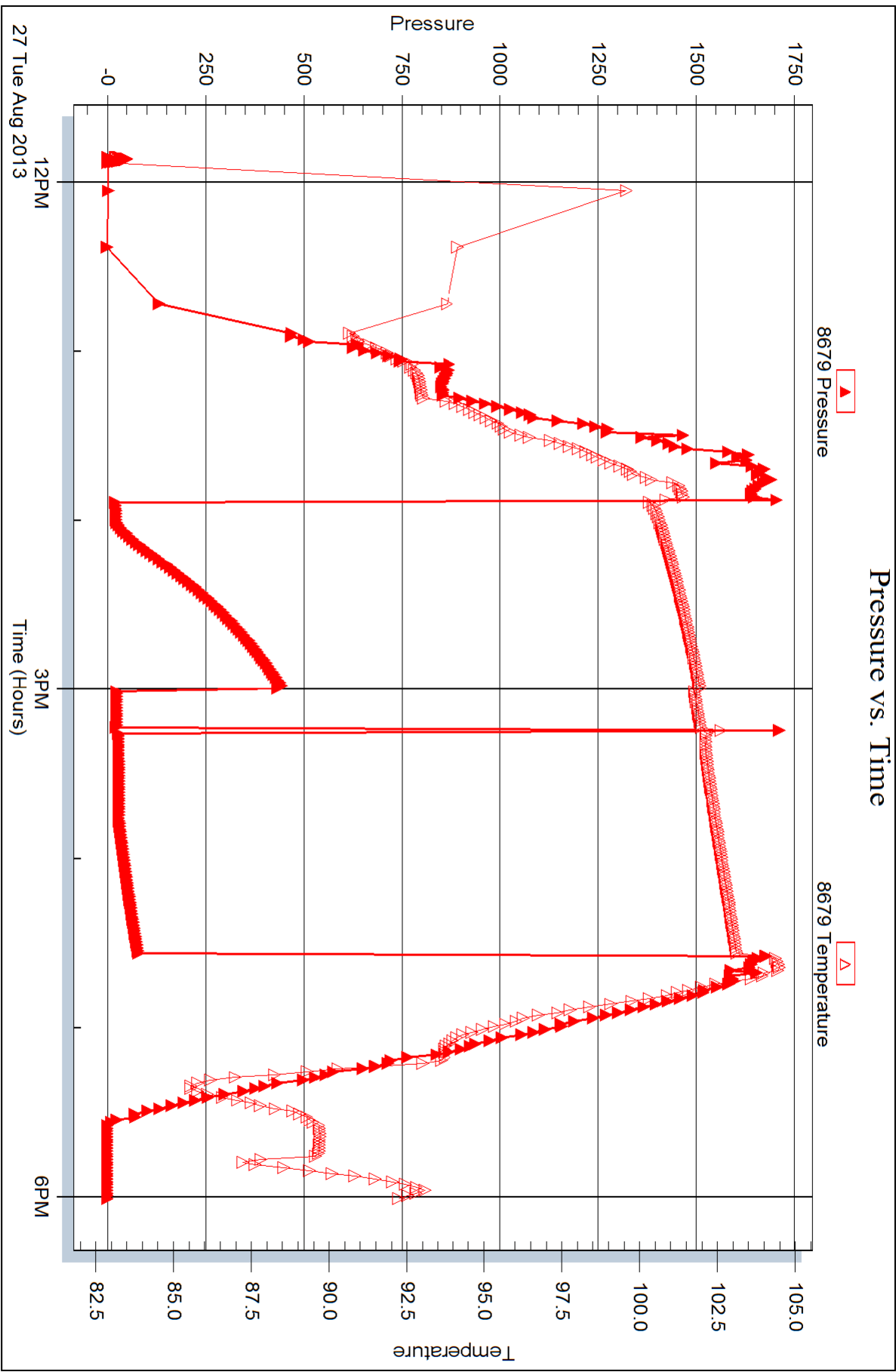
Recovery Information

Recovery Table

Length ft	Description	Volume bbl
10.00	Mud	0.049

Total Length: 10.00 ft Total Volume: 0.049 bbl
 Num Fluid Samples: 0 Num Gas Bombs: 0 Serial #:
 Laboratory Name: Laboratory Location:
 Recovery Comments:







DRILL STEM TEST REPORT

Prepared For: **DaMar Resources Inc**

PO Box 70
Hays KS 67601-3805

ATTN: Randy Kilian

Romme #1

22-13s-17w Ellis,KS

Start Date: 2013.08.28 @ 07:26:19

End Date: 2013.08.28 @ 16:20:19

Job Ticket #: 041758 DST #: 5

Trilobite Testing, Inc

PO Box 362 Hays, KS 67601

ph: 785-625-4778 fax: 785-625-5620

Printed: 2013.09.04 @ 11:39:14



**TRILOBITE
TESTING, INC.**

DRILL STEM TEST REPORT

DaMar Resources Inc
PO Box 70
Hays KS 67601-3805
ATTN: Randy Kilian

22-13s-17w Ellis,KS

Romme #1

Job Ticket: 041758

DST#: 5

Test Start: 2013.08.28 @ 07:26:19

GENERAL INFORMATION:

Formation: **Arbucle**

Deviated: No Whipstock: ft (KB)

Time Tool Opened: 09:06:49

Time Test Ended: 16:20:19

Test Type: Conventional Straddle (Reset)

Tester: Jeff Brown

Unit No: 67

Interval: 3530.00 ft (KB) To 3570.00 ft (KB) (TVD)

Reference Elevations: 1998.00 ft (KB)

Total Depth: 3629.00 ft (KB) (TVD)

1991.00 ft (CF)

Hole Diameter: 7.88 inches Hole Condition: Good

KB to GR/CF: 7.00 ft

Serial #: 6625 Inside

Press @ Run Depth: 670.19 psig @ 3531.00 ft (KB)

Capacity: 8000.00 psig

Start Date: 2013.08.28

End Date:

2013.08.28

Last Calib.:

2013.08.28

Start Time: 07:26:20

End Time:

16:17:19

Time On Btm:

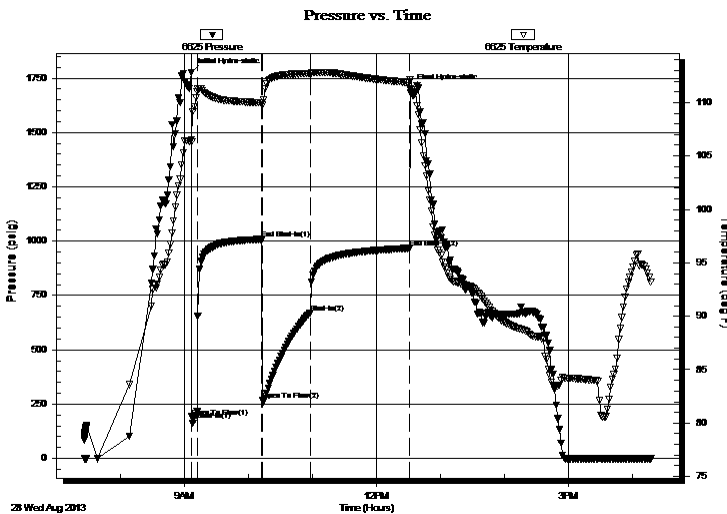
2013.08.28 @ 09:06:19

Time Off Btm:

2013.08.28 @ 12:31:19

TEST COMMENT: IFP=Strong blow BOB in 45 sec
ISI=Good blow back BOB in 24 min
FFP=Strong blow BOB in 45 sec
FSI=Fair blow Built to 8 in died back to 2 in

PRESSURE SUMMARY



Time (Min.)	Pressure (psig)	Temp (deg F)	Annotation
0	1776.50	106.49	Initial Hydro-static
1	191.20	106.33	Open To Flow (1)
6	215.86	111.00	Shut-In(1)
66	1008.59	109.96	End Shut-In(1)
67	269.10	109.74	Open To Flow (2)
112	670.19	112.70	Shut-In(2)
204	967.22	111.86	End Shut-In(2)
205	1700.03	112.17	Final Hydro-static

Recovery

Length (ft)	Description	Volume (bbl)
125.00	MCO 30%M 70%O	1.48
1657.00	Gassy Oil 25%G 75%O	23.24
0.00	720-GIP	0.00

Gas Rates

	Choke (inches)	Pressure (psig)	Gas Rate (Mcf/d)

* Recovery from multiple tests



**TRILOBITE
TESTING, INC.**

DRILL STEM TEST REPORT

TOOL DIAGRAM

DaMar Resources Inc
 PO Box 70
 Hays KS 67601-3805
 ATTN: Randy Kilian

22-13s-17w Ellis,KS
Romme #1
 Job Ticket: 041758 **DST#: 5**
 Test Start: 2013.08.28 @ 07:26:19

Tool Information

Drill Pipe:	Length: 3504.00 ft	Diameter: 3.80 inches	Volume: 49.15 bbl	Tool Weight: 2400.00 lb
Heavy Wt. Pipe:	Length: 0.00 ft	Diameter: 2.70 inches	Volume: 0.00 bbl	Weight set on Packer: 24000.00 lb
Drill Collar:	Length: 30.00 ft	Diameter: 2.25 inches	Volume: 0.15 bbl	Weight to Pull Loose: 56000.00 lb
			<u>Total Volume: 49.30 bbl</u>	Tool Chased 0.00 ft
Drill Pipe Above KB:	32.00 ft			String Weight: Initial 46000.00 lb
Depth to Top Packer:	3530.00 ft			Final 49000.00 lb
Depth to Bottom Packer:	3570.00 ft			
Interval between Packers:	40.00 ft			
Tool Length:	127.00 ft			
Number of Packers:	2	Diameter: 6.75 inches		

Tool Comments:

Tool Description	Length (ft)	Serial No.	Position	Depth (ft)	Accum. Lengths
------------------	-------------	------------	----------	------------	----------------

Change Over Sub	1.00			3503.00	
Shut In Tool	5.00			3508.00	
Hydraulic tool	5.00			3513.00	
Jars	5.00			3518.00	
Safety Joint	3.00			3521.00	
Packer	4.00			3525.00	28.00 Bottom Of Top Packer
Packer	5.00			3530.00	
Stubb	1.00			3531.00	
Recorder	0.00	6625	Inside	3531.00	
Recorder	0.00	8679	Outside	3531.00	
Perforations	35.00			3566.00	
Blank Off Sub	1.00			3567.00	
Stubb	3.00			3570.00	40.00 Tool Interval
Packer	1.00			3571.00	
Stubb	1.00			3572.00	
Recorder	0.00	8167	Below	3572.00	
Perforations	21.00			3593.00	
Change Over Sub	1.00			3594.00	
Drill Pipe	31.00			3625.00	
Change Over Sub	1.00			3626.00	
Bullnose	3.00			3629.00	59.00 Bottom Packers & Anchor

Total Tool Length: 127.00



**TRILOBITE
TESTING, INC.**

DRILL STEM TEST REPORT

FLUID SUMMARY

DaMar Resources Inc
PO Box 70
Hays KS 67601-3805
ATTN: Randy Kilian

22-13s-17w Ellis,KS
Romme #1
Job Ticket: 041758 **DST#: 5**
Test Start: 2013.08.28 @ 07:26:19

Mud and Cushion Information

Mud Type: Gel Chem	Cushion Type:	Oil API: 27 deg API
Mud Weight: 9.00 lb/gal	Cushion Length: ft	Water Salinity: ppm
Viscosity: 52.00 sec/qt	Cushion Volume: bbl	
Water Loss: 8.79 in ³	Gas Cushion Type:	
Resistivity: ohm.m	Gas Cushion Pressure: psig	
Salinity: 6500.00 ppm		
Filter Cake: inches		

Recovery Information

Recovery Table

Length ft	Description	Volume bbl
125.00	MCO 30%M 70%O	1.480
1657.00	Gassy Oil 25%G 75%O	23.243
0.00	720-GIP	0.000

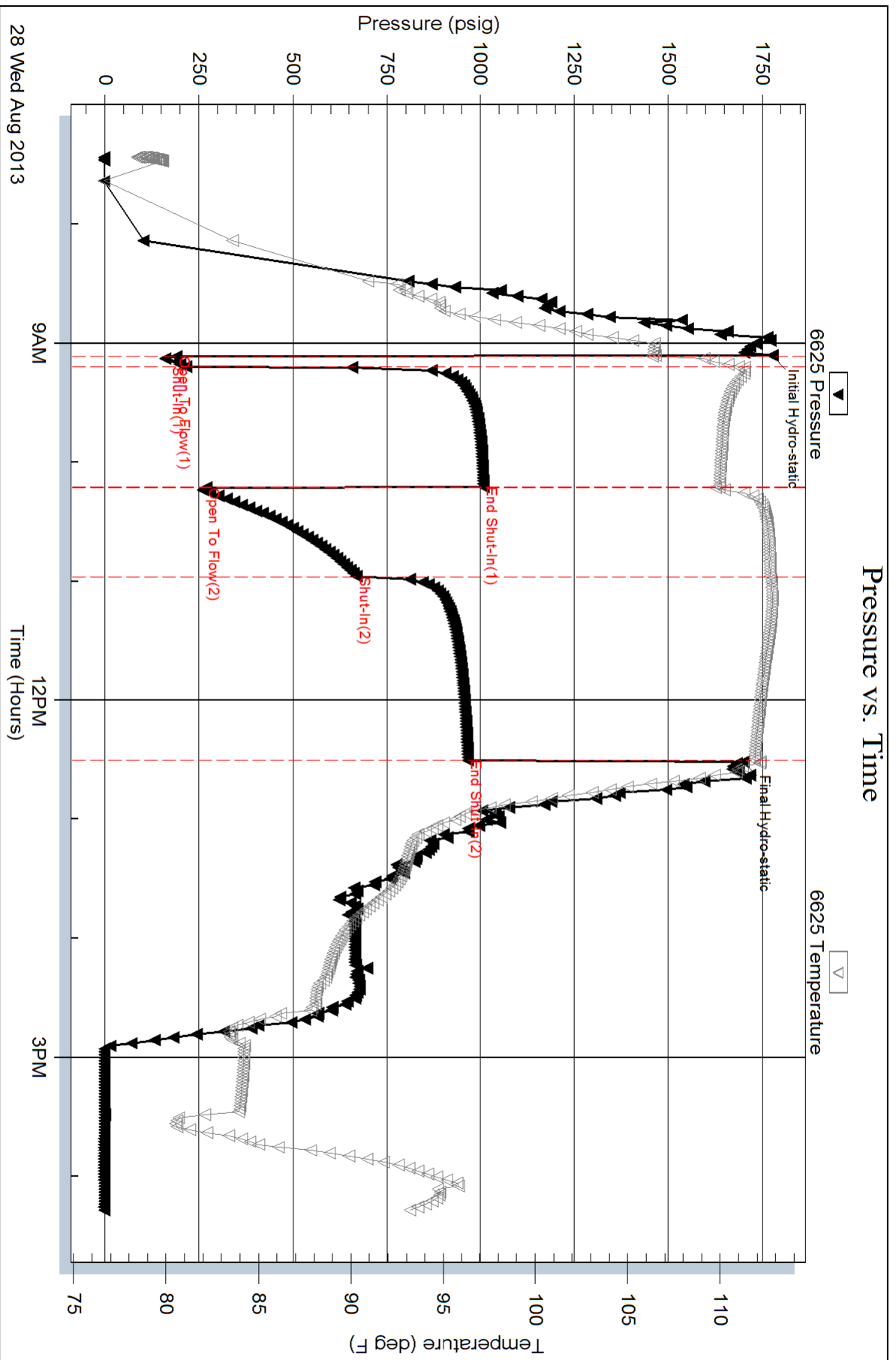
Total Length: 1782.00 ft Total Volume: 24.723 bbl

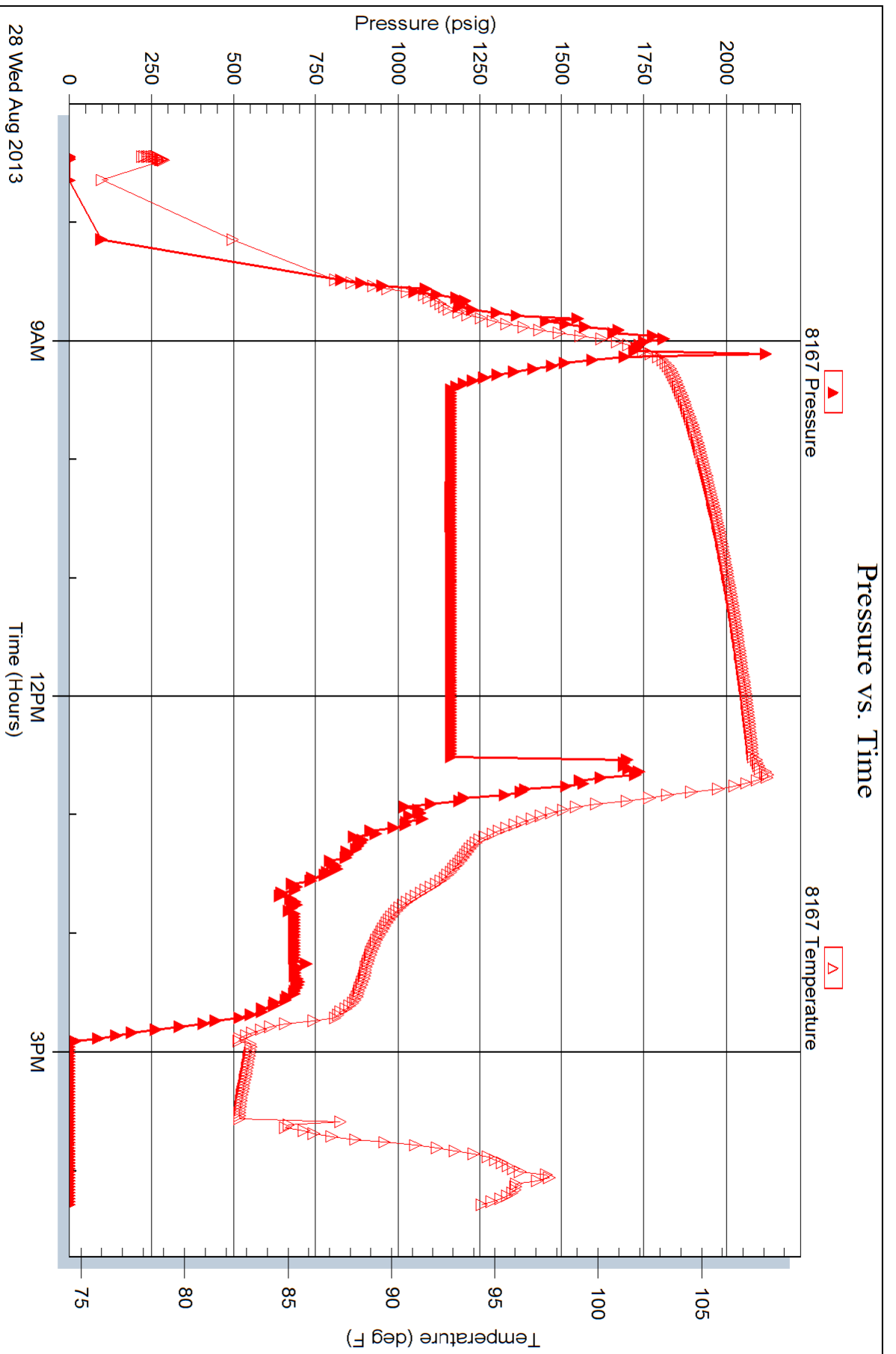
Num Fluid Samples: 0 Num Gas Bombs: 0 Serial #:

Laboratory Name: Laboratory Location:

Recovery Comments:

Pressure vs. Time





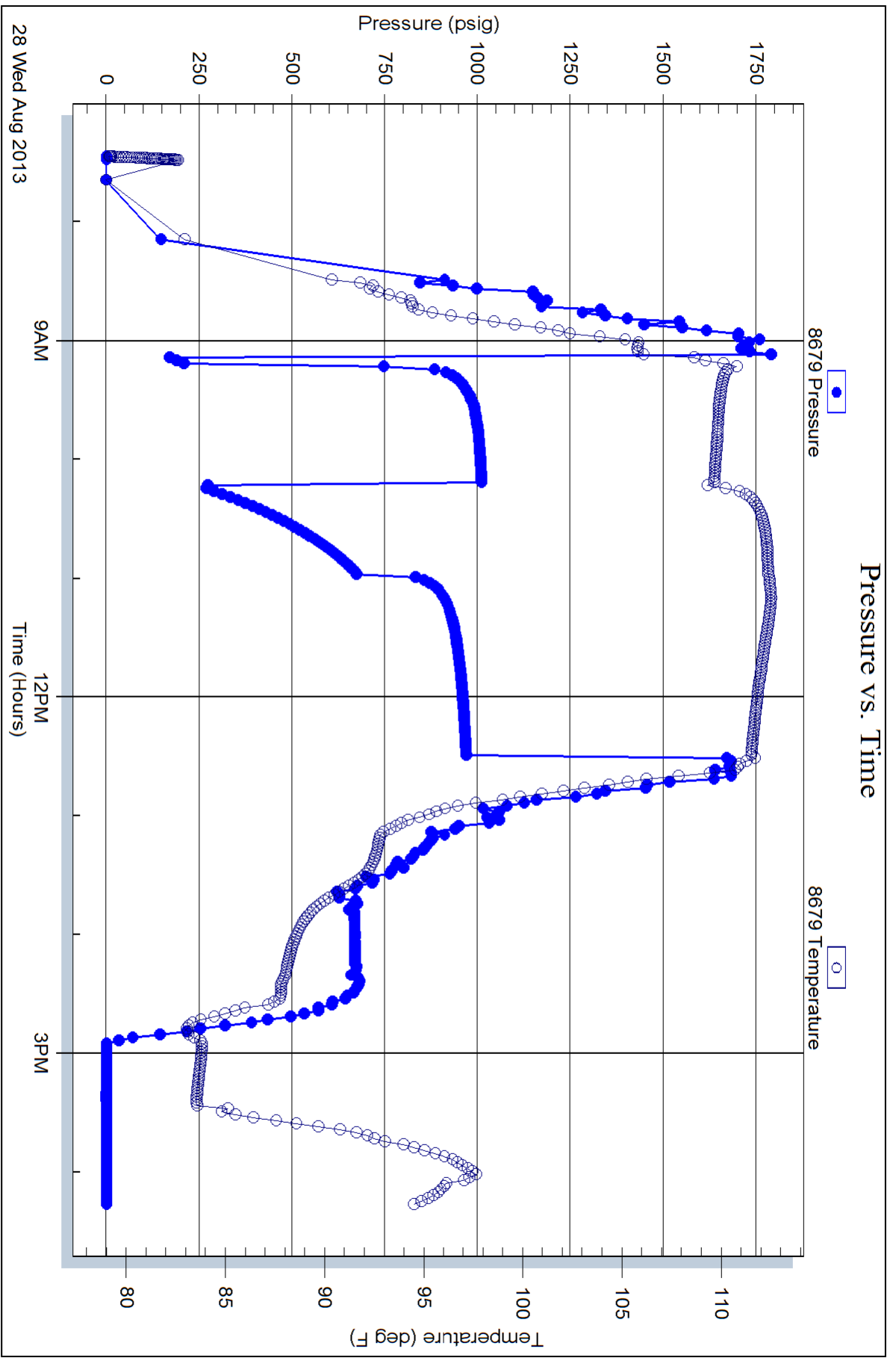
Serial #: 8679

Outside

DaMar Resources Inc

Romme #1

DST Test Number: 5





TRILOBITE TESTING INC.

P.O. Box 1733 • Hays, Kansas 67601

Test Ticket

NO. 041753

Well Name & No. Romme #1 Test No. 1 Date 8-25-13
 Company Damar Resources INC Elevation 1998 KB 1991 GL
 Address PO Box 70 Hays KS 67601 + 3805
 Co. Rep / Geo. Randy Kilian Rig Discovery #2
 Location: Sec. 22 Twp. 13 S Rge. 17 W Co. ELLIS State KS

Interval Tested 3252-3340 Zone Tested Tor - LKC - "C"
 Anchor Length 88 Drill Pipe Run 3221 Mud Wt. 8.5
 Top Packer Depth 3247 Drill Collars Run 30 Vis 600
 Bottom Packer Depth 3252 Wt. Pipe Run 0 WL 8.0
 Total Depth 3340 Chlorides 2500 ppm System LCM 3 #

Blow Description FF-Fair Blow Bu:IT TO 8 IN
ISF-Weak Surface Blow Back died OUT IN 12 min
FF-Fair Blow Bu:IT TO 9 IN
ISF-Dead NO Blow Back

Rec	Feet of	%gas	%oil	%water	%mud
<u>172</u>	<u>Mud with oil spots</u>				
Rec	Feet of	%gas	%oil	%water	%mud
Rec	Feet of	%gas	%oil	%water	%mud
Rec	Feet of	%gas	%oil	%water	%mud
Rec	Feet of	%gas	%oil	%water	%mud

Rec Total 172 BHT Gravity API RW @ °F Chlorides ppm

(A) Initial Hydrostatic 1603 Test 1150 T-On Location 1:40
 (B) First Initial Flow 55 Jars T-Started 2:37
 (C) First Final Flow 83 Safety Joint 75 T-Open 4:52
 (D) Initial Shut-In 720 Circ Sub T-Pulled 8:27
 (E) Second Initial Flow 98 Hourly Standby T-Out 10:38
 (F) Second Final Flow 567 Mileage 12 RT 18.60 Comments
 (G) Final Shut-In 640 Sampler
 (H) Final Hydrostatic 1539 Straddle Ruined Shale Packer
 Shale Packer Ruined Packer
 Extra Packer Extra Copies

Initial Open 5
 Initial Shut-In 60
 Final Flow 60
 Final Shut-In 90

Sub Total 1243.60
 Total 1243.60
 MP/DST Disc't

Approved By _____ Our Representative Jeff Brown

Trilobite Testing Inc. shall not be liable for damaged of any kind of the property or personnel of the one for whom a test is made, or for any loss suffered or sustained, directly or indirectly, through the use of its equipment, or its statements or opinion concerning the results of any test, tools lost or damaged in the hole shall be paid for at cost by the party for whom the test is made.



TRILOBITE TESTING INC.

P.O. Box 1733 • Hays, Kansas 67601

Test Ticket

NO. 041754

Well Name & No. Romme #1 Test No. 2 Date 8-25-13
 Company Damar Resources INC Elevation 1998 KB 1991 GL
 Address Po Box 70 Hays KS 67601 + 3805
 Co. Rep / Geo. Randy Kilian Rig Discovery #2
 Location: Sec. 22 Twp. 13s Rge. 17W Co. ELLIS State KS

Interval Tested 3310-3412 Zone Tested LKC-C-G
 Anchor Length 102 Drill Pipe Run 3284 Mud Wt. 9.1
 Top Packer Depth 3305 Drill Collars Run 30 Vis 44
 Bottom Packer Depth 3310 Wt. Pipe Run 0 WL 8.8
 Total Depth 3412 Chlorides 5500 ppm System LCM 2

Blow Description FP-Weak Blow Built to 1 IN
1st-Dead No Blow Back
FP-Weak Blow Built to 1 IN in 30 min Flushed Tool Weak Blow Built to 3/4 IN
1st-Dead No Blow Back

Rec	Feet of	%gas	%oil	%water	%mud
<u>55</u>	<u>Feet of MUD WITH A Scum of oil</u>				
Rec	Feet of	%gas	%oil	%water	%mud
Rec	Feet of	%gas	%oil	%water	%mud
Rec	Feet of	%gas	%oil	%water	%mud
Rec	Feet of	%gas	%oil	%water	%mud

Rec Total 55 BHT Gravity _____ API RW _____ @ _____ ° F Chlorides _____ ppm

(A) Initial Hydrostatic <u>11654</u>	<input checked="" type="checkbox"/> Test 1150	T-On Location <u>18:07</u>
(B) First Initial Flow <u>47</u>	<input type="checkbox"/> Jars	T-Started <u>18:13</u>
(C) First Final Flow <u>55</u>	<input checked="" type="checkbox"/> Safety Joint 75	T-Open <u>19:46</u>
(D) Initial Shut-In <u>442</u>	<input type="checkbox"/> Circ Sub	T-Pulled <u>23:21</u>
(E) Second Initial Flow <u>57</u>	<input type="checkbox"/> Hourly Standby	T-Out <u>1:43</u>
(F) Second Final Flow <u>70</u>	<input checked="" type="checkbox"/> Mileage 18.60	Comments _____
(G) Final Shut-In <u>407</u>	<input type="checkbox"/> Sampler	<input type="checkbox"/> Ruined Shale Packer
(H) Final Hydrostatic <u>11639</u>	<input type="checkbox"/> Straddle	<input type="checkbox"/> Ruined Packer
Initial Open <u>5</u>	<input type="checkbox"/> Shale Packer	<input type="checkbox"/> Extra Copies
Initial Shut-In <u>600</u>	<input type="checkbox"/> Extra Packer	Sub Total <u>0</u>
Final Flow <u>600 90</u>	<input type="checkbox"/> Extra Recorder	Total <u>1243.60</u>
Final Shut-In _____	<input type="checkbox"/> Day Standby	MP/DST Disc't _____
	<input type="checkbox"/> Accessibility	
	Sub Total <u>1243.60</u>	

Approved By _____ Our Representative Jeff Brown

Trilobite Testing Inc. shall not be liable for damaged of any kind of the property or personnel of the one for whom a test is made, or for any loss suffered or sustained, directly or indirectly, through the use of its equipment, or its statements or opinion concerning the results of any test, tools lost or damaged in the hole shall be paid for at cost by the party for whom the test is made.



TRILOBITE TESTING INC.

P.O. Box 1733 • Hays, Kansas 67601

Test Ticket

NO. 041756

4/10

Well Name & No. Romme #1 Test No. 3 Date 8-26-13
 Company Damar Resources INC Elevation 1998 KB 1991 GL
 Address PO Box 70 Hays KS 67601 + 3805
 Co. Rep / Geo. Randy Kilian Rig Discovery #2
 Location: Sec. 22 Twp. 13S Rge. 17W Co. ELLIS State KS

Interval Tested 3251-3336 Zone Tested Tol-LKC-A-B
 Anchor Length 85' Anchor 76' Tail Drill Pipe Run 3221 Mud Wt. 9.2
 Top Packer Depth 3246 Drill Collars Run 30 Vis 5L
 Bottom Packer Depth 3251 Wt. Pipe Run 0 WL 8.0
 Total Depth 3412 Chlorides 5000 ppm System LCM 1 1/2

Blow Description FP-Fair Blow Built to 4 1/2 IN
ISI-Dead NO Blow Back
FP-Good Blow BOB IN 19 min
FST-Dead NO Blow Back

Rec	Feet of	%gas	%oil	%water	%mud
<u>126</u>	<u>Feet of GMW with oil speckles 5</u>			<u>50%</u>	<u>45%</u>
<u>104</u>	<u>Feet of Mud with oil speckles</u>				
Rec	Feet of	%gas	%oil	%water	%mud
Rec	Feet of	%gas	%oil	%water	%mud

Rec Total 230 BHT 103 Gravity _____ API RW 1163 @ 74.7 °F Chlorides 43,000 ppm
 (A) Initial Hydrostatic 11626 Test 1150 T-On Location 17:15
 (B) First Initial Flow 51 Jars _____ T-Started 17:37
 (C) First Final Flow 73 Safety Joint _____ T-Open 19:35
 (D) Initial Shut-In 710 Circ Sub _____ T-Pulled 23:10
 (E) Second Initial Flow 78 Hourly Standby _____ T-Out 1:28
 (F) Second Final Flow 154 Mileage 18.60 Comments _____
 (G) Final Shut-In 498 Sampler _____
 (H) Final Hydrostatic 11622 Straddle 600 Ruined Shale Packer _____

Initial Open 5 Shale Packer _____ Ruined Packer _____
 Initial Shut-In 60 Extra Packer _____ Extra Copies _____
 Final Flow 400 Extra Recorder _____ Sub Total 0
 Final Shut-In 90 Day Standby _____ Total 1768.60
 Accessibility _____ MP/DST Disc't _____
 Sub Total 1768.60

Approved By _____ Our Representative Jeff Brown

Trilobite Testing Inc. shall not be liable for damaged of any kind of the property or personnel of the one for whom a test is made, or for any loss suffered or sustained, directly or indirectly, through the use of its equipment, or its statements or opinion concerning the results of any test, tools lost or damaged in the hole shall be paid for at cost by the party for whom the test is made.



TRILOBITE TESTING INC.

P.O. Box 1733 • Hays, Kansas 67601

Test Ticket

NO. 041757

Well Name & No. Romme #1 Test No. 4 Date 8-27-13
 Company Damar Resources INC Elevation 1998 KB 1991 GL
 Address PoBox 70 Hays KS 67601 + 3805
 Co. Rep / Geo. Randy Kilian Rig Discovery #2
 Location: Sec. 22 Twp. 13 S Rge. 17 W Co. ELLIS State KS

Interval Tested 3422-3530 Zone Tested LKC-H-L
 Anchor Length 108 Drill Pipe Run 3378 Mud Wt. 9.2
 Top Packer Depth 3417 Drill Collars Run 30 Vis 56
 Bottom Packer Depth 3422 Wt. Pipe Run 0 WL 8.0
 Total Depth 3530 Chlorides 5000 ppm System LCM 1 1/2

Blow Description FF-Weak Blow By IT TO 1/4 IN
IS-Dead NO Blow Back
FF-Weak Blow Died out in 8 min Flushed Tool Weak surface Blow Then Died
IS-Dead No Blow Back

Rec	Feet of	%gas	%oil	%water	%mud
<u>10</u>	<u>MUD</u>				

Rec Total 10 BHT 104 Gravity _____ API RW _____ @ _____ °F Chlorides _____ ppm

(A) Initial Hydrostatic 1707 Test 1150 T-On Location 11:40
 (B) First Initial Flow 17 Jars _____ T-Started 11:51
 (C) First Final Flow 19 Safety Joint _____ T-Open 13:55
 (D) Initial Shut-In 443 Circ Sub _____ T-Pulled 16:30
 (E) Second Initial Flow 21 Hourly Standby _____ T-Out 18:02
 (F) Second Final Flow 27 Mileage 18.60 Comments _____
 (G) Final Shut-In 77 Sampler _____
 (H) Final Hydrostatic 1434 Straddle _____ Ruined Shale Packer _____
 Shale Packer _____ Ruined Packer _____
 Extra Packer _____ Extra Copies _____

Initial Open 5
 Initial Shut-In 200
 Final Flow _____
 Final Shut-In _____
 Sub Total 0 Total 1168.60
 Sub Total 1168.60 MP/DST Disc't _____

Approved By _____ Our Representative Jeff Brown

Trilobite Testing Inc. shall not be liable for damaged of any kind of the property or personnel of the one for whom a test is made, or for any loss suffered or sustained, directly or indirectly, through the use of its equipment, or its statements or opinion concerning the results of any test, tools lost or damaged in the hole shall be paid for at cost by the party for whom the test is made.



TRILOBITE TESTING INC.

P.O. Box 1733 • Hays, Kansas 67601

Test Ticket

NO. 041758

Well Name & No. Romme #1 Test No. 5 Date 8-28-13
 Company Damar Resources INC Elevation 1998 KB 1991 GL
 Address Po Box 70 Hays KS 67601 + 3805
 Co. Rep / Geo. Randy Kilian Rig Discovery #2
 Location: Sec. 22 Twp. 13S Rge. 17W Co. ELLIS State KS

Interval Tested 3530-3570 Zone Tested ArBuckle
 Anchor Length 40' Anchor 59' Tail Drill Pipe Run 3504 Mud Wt. 9.2
 Top Packer Depth 3525 Drill Collars Run 30 Vis 52
 Bottom Packer Depth 3530 Wt. Pipe Run 0 WL 8.8
 Total Depth 3629 Chlorides 4500 ppm System LCM 3

Blow Description FF-Strong Blow BOB IN 45 sec
1st Good Blow back BOB IN 24 min
FF-Strong Blow BOB IN 45 sec
1st Fair Blow Built TO 8 IN DieD Back TO 2 IN

Rec	Feet of	%gas	%oil	%water	%mud
<u>125</u>	<u>MCO</u>	<u>70</u>	<u>70</u>	<u>30</u>	<u>30</u>
<u>1457</u>	<u>Gassy oil</u>	<u>25</u>	<u>75</u>		
<u>720</u>	<u>GIP</u>				

Rec Total 1782 BHT 112 Gravity 27 API RW @ ° F Chlorides ppm

(A) Initial Hydrostatic <u>1777</u>	<input checked="" type="checkbox"/> Test <u>1150</u>	T-On Location <u>6:01/6:57</u>
(B) First Initial Flow <u>191</u>	<input type="checkbox"/> Jars	T-Started <u>7:24</u>
(C) First Final Flow <u>216</u>	<input type="checkbox"/> Safety Joint	T-Open <u>9:07</u>
(D) Initial Shut-In <u>1009</u>	<input checked="" type="checkbox"/> Circ Sub <u>50</u>	T-Pulled <u>12:27</u>
(E) Second Initial Flow <u>269</u>	<input type="checkbox"/> Hourly Standby	T-Out <u>16:20</u>
(F) Second Final Flow <u>470</u>	<input checked="" type="checkbox"/> Mileage <u>18.60</u>	Comments
(G) Final Shut-In <u>967</u>	<input type="checkbox"/> Sampler	
(H) Final Hydrostatic <u>1700</u>	<input checked="" type="checkbox"/> Straddle <u>600</u>	
	<input type="checkbox"/> Shale Packer	<input type="checkbox"/> Ruined Shale Packer
	<input type="checkbox"/> Extra Packer	<input checked="" type="checkbox"/> Ruined Packer <u>320</u>
	<input type="checkbox"/> Extra Recorder	<input type="checkbox"/> Extra Copies
	<input type="checkbox"/> Day Standby	Sub Total <u>0</u>
	<input type="checkbox"/> Accessibility	Total <u>2138.60</u>
	Sub Total <u>1818.60</u>	MP/DST Disc't

Initial Open 5
 Initial Shut-In 60
 Final Flow 45
 Final Shut-In 90

Approved By _____ Our Representative Jeff Brown

Trilobite Testing Inc. shall not be liable for damaged of any kind of the property or personnel of the one for whom a test is made, or for any loss suffered or sustained, directly or indirectly, through the use of its equipment, or its statements or opinion concerning the results of any test, tools lost or damaged in the hole shall be paid for at cost by the party for whom the test is made.