



TRILOBITE TESTING, INC.

DRILL STEM TEST REPORT

Pioneer Resources
 80 Windmill Dr.
 Phillipsburg, Ks 67661
 ATTN: Steve Murphy

25-14s-30w-Gove Co,Ks

Groom #2

Job Ticket: 52980

DST#: 3

Test Start: 2013.10.08 @ 08:10:00

GENERAL INFORMATION:

Formation: **Kansas City " H "**
 Deviated: No Whipstock: ft (KB)
 Time Tool Opened: 10:24:45
 Time Test Ended: 16:11:30
 Interval: **3896.00 ft (KB) To 3936.00 ft (KB) (TVD)**
 Total Depth: 3936.00 ft (KB) (TVD)
 Hole Diameter: 7.88 inches Hole Condition: Poor
 Test Type: Conventional Bottom Hole (Reset)
 Tester: Jace McKinney
 Unit No: 46
 Reference Elevations: 2693.00 ft (KB)
 2684.00 ft (CF)
 KB to GR/CF: 9.00 ft

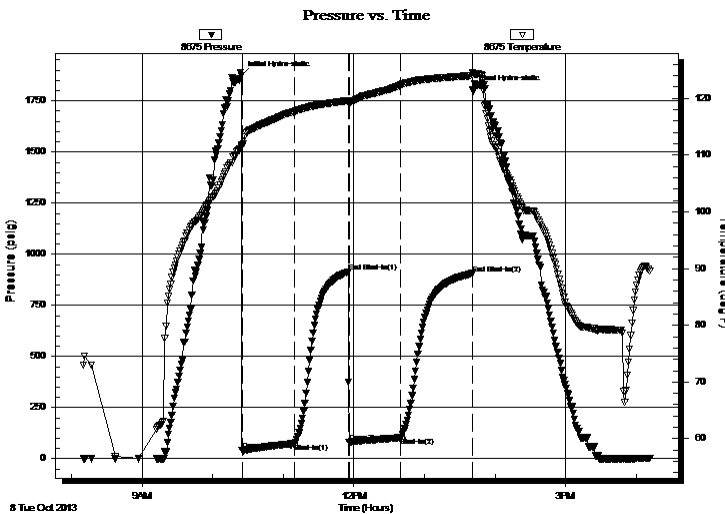
Serial #: 8675

Inside

Press @ Run Depth: 103.19 psig @ 3897.00 ft (KB) Capacity: 8000.00 psig
 Start Date: 2013.10.08 End Date: 2013.10.08 Last Calib.: 2013.10.08
 Start Time: 08:10:15 End Time: 16:11:30 Time On Btm: 2013.10.08 @ 10:24:15
 Time Off Btm: 2013.10.08 @ 13:40:30

TEST COMMENT: B.O.B. in 20 min.
 Bled off for 5 min. No return blow
 B.O.B. in 22 min.
 Bled off for 5 min. Weak return blow

PRESSURE SUMMARY



Time (Min.)	Pressure (psig)	Temp (deg F)	Annotation
0	1873.22	111.74	Initial Hydro-static
1	40.39	111.39	Open To Flow (1)
46	74.55	117.67	Shut-In(1)
91	913.89	119.56	End Shut-In(1)
92	80.81	119.27	Open To Flow (2)
136	103.19	122.29	Shut-In(2)
196	905.70	123.98	End Shut-In(2)
197	1805.53	124.55	Final Hydro-static

Recovery

Length (ft)	Description	Volume (bbl)
0.00	175 Feet Weak Gas In Pipe	0.00
20.00	Clean Oil	0.28
63.00	mco 40%M 60%O	0.88
63.00	gcmo 10%G 40%M 50%O	0.88
63.00	w cgom 5%W 15%G 20%O 60%M	0.88

* Recovery from multiple tests

Gas Rates

Choke (inches)	Pressure (psig)	Gas Rate (Mcf/d)



**TRILOBITE
TESTING, INC.**

DRILL STEM TEST REPORT

FLUID SUMMARY

Pioneer Resources

25-14s-30w-Gove Co,Ks

80 Windmill Dr.
Phillipsburg, Ks 67661

Groom #2

Job Ticket: 52980

DST#: 3

ATTN: Steve Murphy

Test Start: 2013.10.08 @ 08:10:00

Mud and Cushion Information

Mud Type: Gel Chem

Cushion Type:

Oil API:

29 deg API

Mud Weight: 9.00 lb/gal

Cushion Length:

ft

Water Salinity:

ppm

Viscosity: 52.00 sec/qt

Cushion Volume:

bbbl

Water Loss: 7.20 in³

Gas Cushion Type:

Resistivity: ohm.m

Gas Cushion Pressure:

psig

Salinity: 2000.00 ppm

Filter Cake: 1.00 inches

Recovery Information

Recovery Table

Length ft	Description	Volume bbbl
0.00	175 Feet Weak Gas In Pipe	0.000
20.00	Clean Oil	0.281
63.00	mco 40%M 60%O	0.884
63.00	gcmo 10%G 40%M 50%O	0.884
63.00	w cgom 5%W 15%G 20%O 60%M	0.884

Total Length: 209.00 ft Total Volume: 2.933 bbl

Num Fluid Samples: 0

Num Gas Bombs: 0

Serial #:

Laboratory Name:

Laboratory Location:

Recovery Comments: RW: 31 @ 80 F = 29

Pressure vs. Time

