



## DRILL STEM TEST REPORT

Prepared For: **McCoy Petroleum Corp.**

8080 E. Central Ste. 300  
Wichita, KS 67206

ATTN: Dave Williams

### **MAX-NEVA "A" 1-6**

### **6-30s-30w Meade,KS**

Start Date: 2014.01.09 @ 03:14:58

End Date: 2014.01.09 @ 13:33:43

Job Ticket #: 51864                      DST #: 1

Trilobite Testing, Inc  
PO Box 362 Hays, KS 67601  
ph: 785-625-4778 fax: 785-625-5620

Printed: 2014.01.14 @ 07:49:37



**TRILOBITE TESTING, INC**

# DRILL STEM TEST REPORT

McCoy Petroleum Corp.  
 8080 E. Central Ste. 300  
 Wichita, KS 67206  
 ATTN: Dave Williams

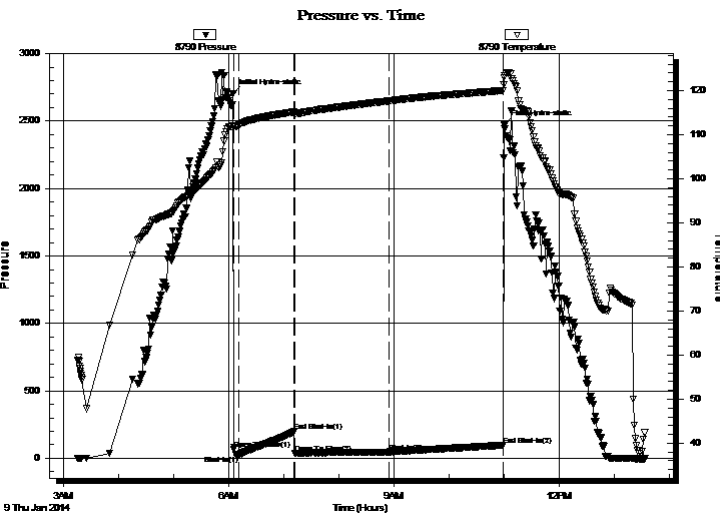
**6-30s-30w Meade, KS**  
**MAX-NEVA "A" 1-6**  
 Job Ticket: 51864 **DST#: 1**  
 Test Start: 2014.01.09 @ 03:14:58

## GENERAL INFORMATION:

Formation: **Morrow**  
 Deviated: No Whipstock: ft (KB)  
 Time Tool Opened: 06:05:28  
 Time Test Ended: 13:33:43  
 Interval: **5210.00 ft (KB) To 5270.00 ft (KB) (TVD)**  
 Total Depth: 5270.00 ft (KB) (TVD)  
 Hole Diameter: 7.88 inches Hole Condition: Fair  
 Test Type: Conventional Bottom Hole (Initial)  
 Tester: Ryan Reynolds  
 Unit No: 48  
 Reference Elevations: 2832.00 ft (KB)  
 2821.00 ft (CF)  
 KB to GR/CF: 11.00 ft

**Serial #: 8790 Inside**  
 Press@RunDepth: 46.71 psig @ 5214.00 ft (KB) Capacity: 8000.00 psig  
 Start Date: 2014.01.09 End Date: 2014.01.09 Last Calib.: 2014.01.09  
 Start Time: 03:15:03 End Time: 13:33:43 Time On Btm: 2014.01.09 @ 06:04:43  
 Time Off Btm: 2014.01.09 @ 11:00:28

TEST COMMENT: IF: Good blow . 1/2" - 7"  
 IS: No blow  
 FF: Fair blow . 1/2" - 4"  
 FS: No blow



## PRESSURE SUMMARY

Time (Min.)	Pressure (psig)	Temp (deg F)	Annotation
0	2701.64	111.97	Initial Hydro-static
1	64.51	111.73	Open To Flow (1)
7	24.13	112.29	Shut-In(1)
67	197.26	115.19	End Shut-In(1)
67	38.90	115.04	Open To Flow (2)
170	46.71	117.68	Shut-In(2)
295	96.58	120.02	End Shut-In(2)
296	2475.96	123.00	Final Hydro-static

## Recovery

Length (ft)	Description	Volume (bbl)
65.00	Drig mud 100% mud	0.32
0.00	235' GIP (VSLI OSpkdM in Hyd. tool)	0.00

## Gas Rates

	Choke (inches)	Pressure (psig)	Gas Rate (m <sup>3</sup> /d)



TRILOBITE  
TESTING, INC

# DRILL STEM TEST REPORT

McCoy Petroleum Corp.  
8080 E. Central Ste. 300  
Wichita, KS 67206  
ATTN: Dave Williams

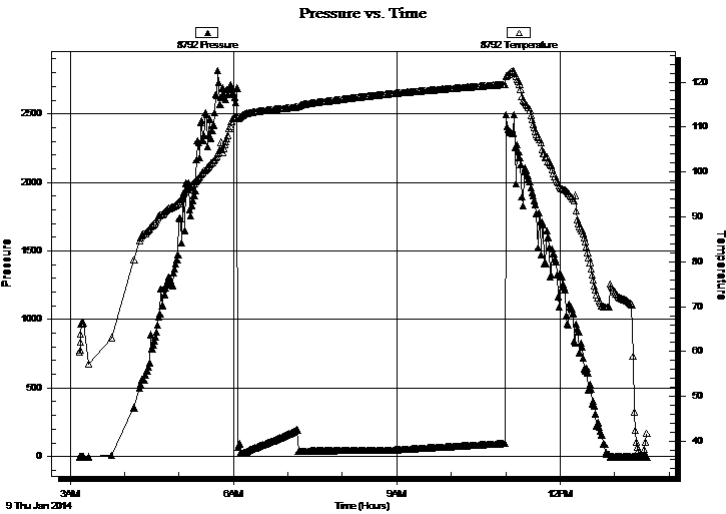
**6-30s-30w Meade, KS**  
**MAX-NEVA "A" 1-6**  
Job Ticket: 51864 **DST#: 1**  
Test Start: 2014.01.09 @ 03:14:58

## GENERAL INFORMATION:

Formation: **Morrow**  
Deviated: No Whipstock: ft (KB)  
Time Tool Opened: 06:05:28  
Time Test Ended: 13:33:43  
Interval: **5210.00 ft (KB) To 5270.00 ft (KB) (TVD)**  
Total Depth: 5270.00 ft (KB) (TVD)  
Hole Diameter: 7.88 inches Hole Condition: Fair  
Test Type: Conventional Bottom Hole (Initial)  
Tester: Ryan Reynolds  
Unit No: 48  
Reference Elevations: 2832.00 ft (KB)  
2821.00 ft (CF)  
KB to GR/CF: 11.00 ft

**Serial #: 8792** **Outside**  
Press@RunDepth: psig @ 5214.00 ft (KB) Capacity: 8000.00 psig  
Start Date: 2014.01.09 End Date: 2014.01.09 Last Calib.: 2014.01.09  
Start Time: 03:10:37 End Time: 13:35:32 Time On Btm:  
Time Off Btm:

TEST COMMENT: IF: Good blow . 1/2" - 7"  
IS: No blow  
FF: Fair blow . 1/2" - 4"  
FS: No blow



## PRESSURE SUMMARY

Time (Min.)	Pressure (psig)	Temp (deg F)	Annotation

## Recovery

Length (ft)	Description	Volume (bbl)
65.00	Drig mud 100% mud	0.32
0.00	235' GIP (VSLI OSpkdM in Hyd. tool)	0.00

## Gas Rates

Choke (inches)	Pressure (psig)	Gas Rate (m <sup>3</sup> /d)



**TRILOBITE  
TESTING, INC**

# DRILL STEM TEST REPORT

**TOOL DIAGRAM**

McCoy Petroleum Corp.

**6-30s-30w Meade, KS**

8080 E. Central Ste. 300  
Wichita, KS 67206

**MAX-NEVA "A" 1-6**

Job Ticket: 51864

**DST#: 1**

ATTN: Dave Williams

Test Start: 2014.01.09 @ 03:14:58

## Tool Information

Drill Pipe:	Length: 4904.00 ft	Diameter: 3.80 inches	Volume: 68.79 bbl	Tool Weight:	2400.00 lb
Heavy Wt. Pipe:	Length: 0.00 ft	Diameter: 0.00 inches	Volume: 0.00 bbl	Weight set on Packer:	25000.00 lb
Drill Collar:	Length: 308.00 ft	Diameter: 2.25 inches	Volume: 1.51 bbl	Weight to Pull Loose:	120000.0 lb
			<u>Total Volume: 70.30 bbl</u>	Tool Chased	0.00 ft
Drill Pipe Above KB:	29.00 ft			String Weight: Initial	91000.00 lb
Depth to Top Packer:	5210.00 ft			Final	98000.00 lb
Depth to Bottom Packer:	ft				
Interval between Packers:	60.00 ft				
Tool Length:	87.00 ft				
Number of Packers:	2	Diameter: 6.75 inches			

Tool Comments:

## Tool Description

Tool Description	Length (ft)	Serial No.	Position	Depth (ft)	Accum. Lengths
Change Over Sub	1.00			5184.00	
Shut In Tool	5.00			5189.00	
Hydraulic tool	5.00			5194.00	
Jars	5.00			5199.00	
Safety Joint	2.00			5201.00	
Packer	5.00			5206.00	27.00 Bottom Of Top Packer
Packer	4.00			5210.00	
Stubb	1.00			5211.00	
Perforations	2.00			5213.00	
Change Over Sub	1.00			5214.00	
Recorder	0.00	8790	Inside	5214.00	
Recorder	0.00	8792	Outside	5214.00	
Drill Pipe	32.00			5246.00	
Change Over Sub	1.00			5247.00	
Perforations	20.00			5267.00	
Bullnose	3.00			5270.00	60.00 Bottom Packers & Anchor
<b>Total Tool Length:</b>	<b>87.00</b>				



**TRILOBITE  
TESTING, INC**

# DRILL STEM TEST REPORT

## FLUID SUMMARY

McCoy Petroleum Corp.  
8080 E. Central Ste. 300  
Wichita, KS 67206  
ATTN: Dave Williams

**6-30s-30w Meade, KS**  
**MAX-NEVA "A" 1-6**  
Job Ticket: 51864      **DST#: 1**  
Test Start: 2014.01.09 @ 03:14:58

### Mud and Cushion Information

Mud Type: Gel Chem	Cushion Type:	Oil API:	deg API
Mud Weight: 9.00 lb/gal	Cushion Length: ft	Water Salinity:	1600 ppm
Viscosity: 55.00 sec/qt	Cushion Volume: bbl		
Water Loss: 7.19 in <sup>3</sup>	Gas Cushion Type:		
Resistivity: ohm.m	Gas Cushion Pressure: psig		
Salinity: 1600.00 ppm			
Filter Cake: 0.02 inches			

### Recovery Information

Recovery Table

Length ft	Description	Volume bbl
65.00	Drig mud 100% mud	0.320
0.00	235' GIP (VSLI OSpkdM in Hyd. tool)	0.000

Total Length: 65.00 ft      Total Volume: 0.320 bbl  
 Num Fluid Samples: 0      Num Gas Bombs: 0      Serial #: none  
 Laboratory Name:      Laboratory Location:  
 Recovery Comments:

Serial #: 8790

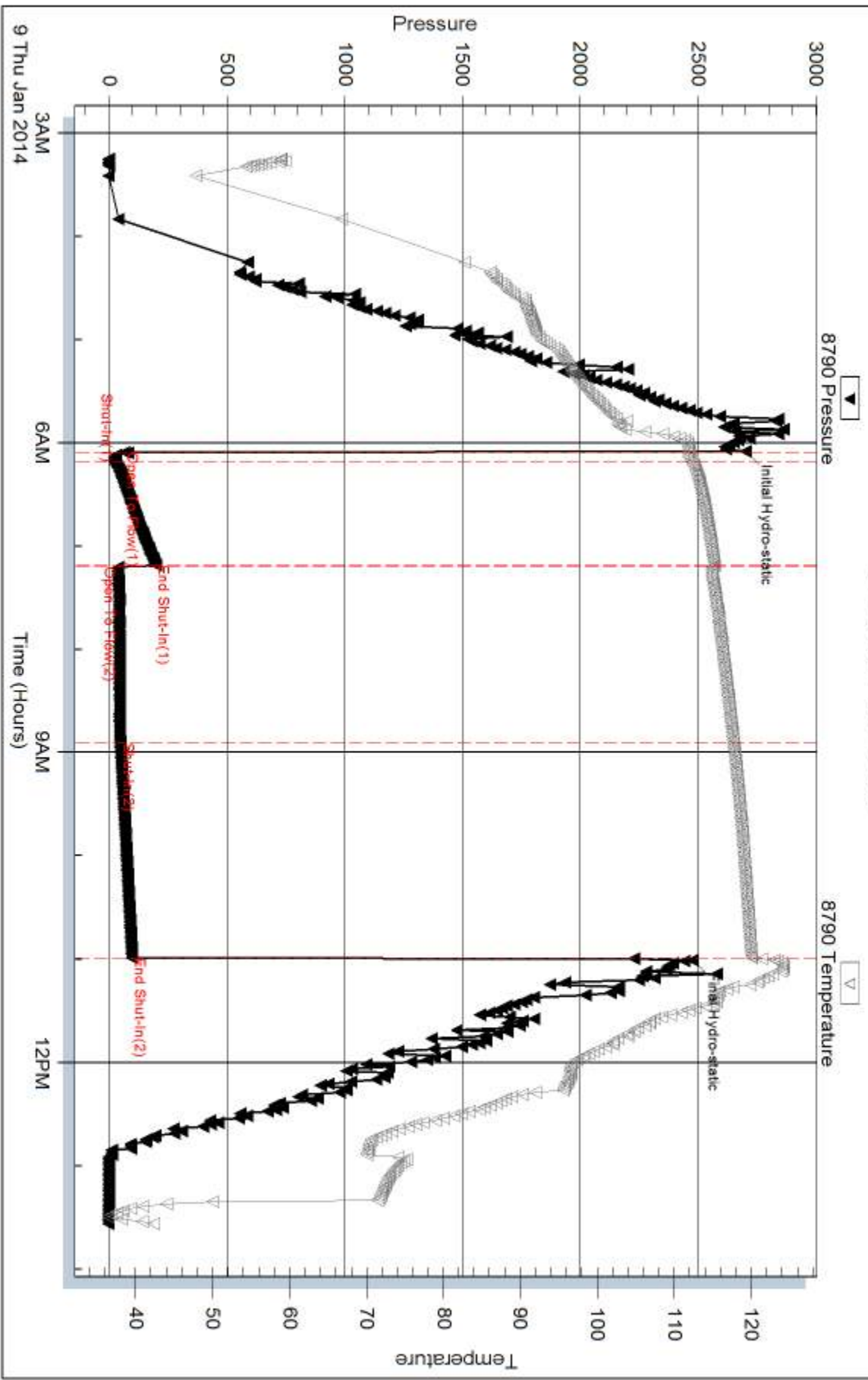
Inside

McCoy Petroleum Corp.

MAX-NEVA "A" 1-6

DST Test Number: 1

### Pressure vs. Time



Trilobite Testing, Inc

Ref. No: 51864

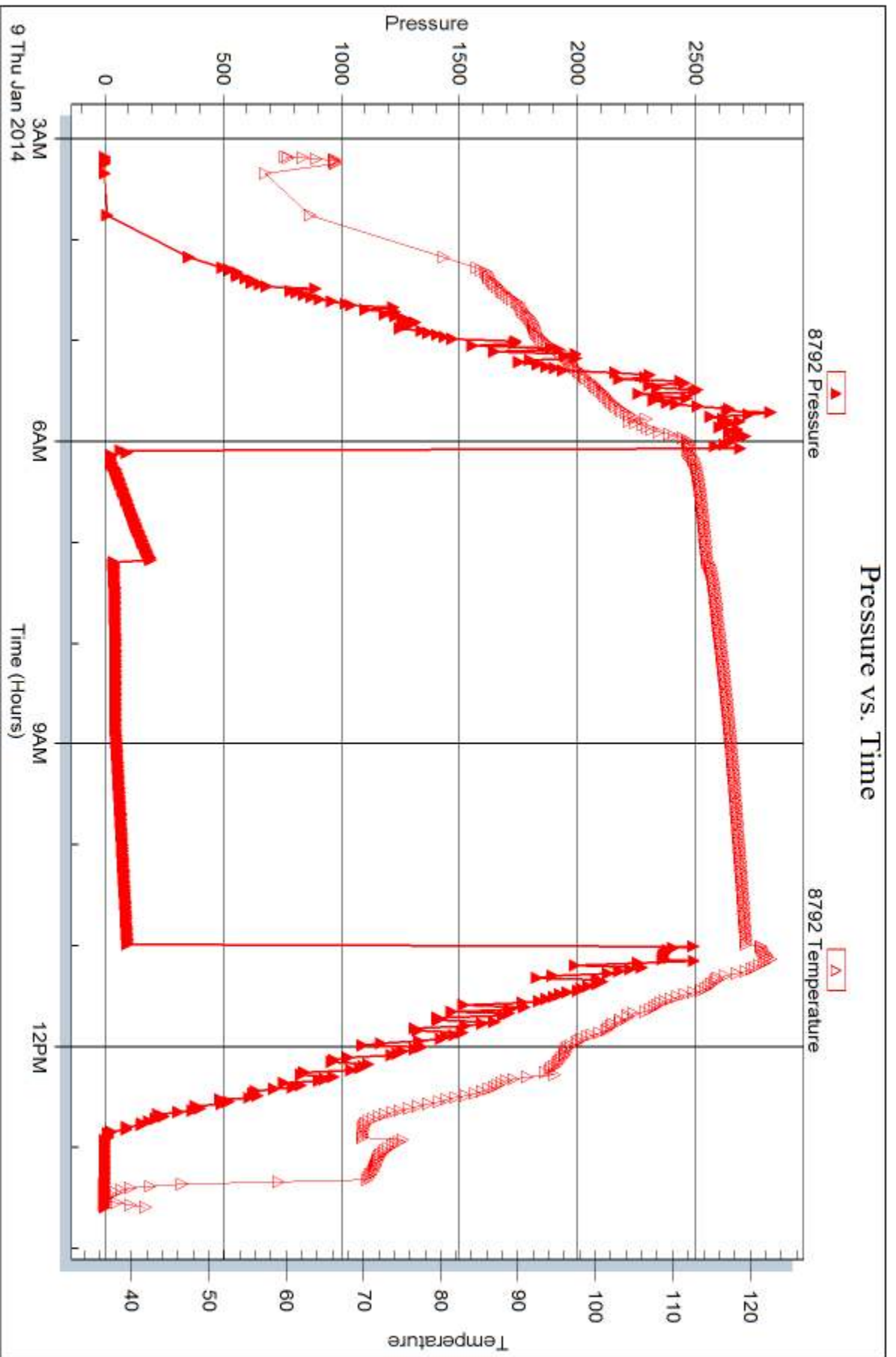
Printed: 2014.01.14 @ 07:49:40

Serial #: 8792

Outside McCoy Petroleum Corp.

MAX-NEVA "A" 1-6

DST Test Number: 1



Trilobite Testing, Inc

Ref. No: 51864

Printed: 2014.01.14 @ 07:49:40



## DRILL STEM TEST REPORT

Prepared For: **McCoy Petroleum Corp.**

8080 E. Central Ste. 300  
Wichita, KS 67206

ATTN: Dave Williams

### **MAX-NEVA "A" 1-6**

### **6-30s-30w Meade,KS**

Start Date: 2014.01.10 @ 00:06:00

End Date: 2014.01.10 @ 10:33:45

Job Ticket #: 51865                      DST #: 2

Trilobite Testing, Inc

PO Box 362 Hays, KS 67601

ph: 785-625-4778 fax: 785-625-5620

Printed: 2014.01.14 @ 07:48:48





**TRILOBITE  
TESTING, INC**

# DRILL STEM TEST REPORT

McCoy Petroleum Corp.  
8080 E. Central Ste. 300  
Wichita, KS 67206  
ATTN: Dave Williams

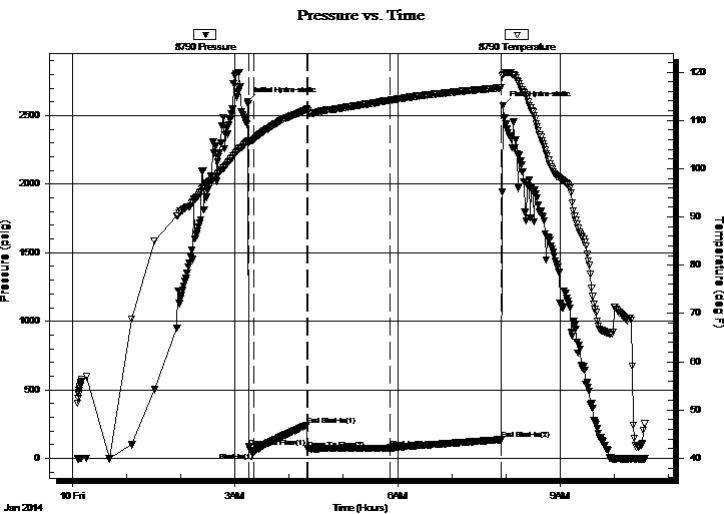
**6-30s-30w Meade, KS**  
**MAX-NEVA "A" 1-6**  
Job Ticket: 51865 **DST#: 2**  
Test Start: 2014.01.10 @ 00:06:00

## GENERAL INFORMATION:

Formation: **Morrow / Chester**  
Deviated: No Whipstock: ft (KB)  
Time Tool Opened: 03:15:45  
Time Test Ended: 10:33:45  
Interval: **5208.00 ft (KB) To 5310.00 ft (KB) (TVD)**  
Total Depth: 5310.00 ft (KB) (TVD)  
Hole Diameter: 7.88 inches Hole Condition: Fair  
Test Type: Conventional Bottom Hole (Reset)  
Tester: Ryan Reynolds  
Unit No: 48  
Reference Elevations: 2832.00 ft (KB)  
2821.00 ft (CF)  
KB to GR/CF: 11.00 ft

**Serial #: 8790 Inside**  
Press@RunDepth: 74.10 psig @ 5212.00 ft (KB) Capacity: 8000.00 psig  
Start Date: 2014.01.10 End Date: 2014.01.10 Last Calib.: 2014.01.10  
Start Time: 00:06:05 End Time: 10:33:45 Time On Btm: 2014.01.10 @ 03:14:30  
Time Off Btm: 2014.01.10 @ 07:57:15

TEST COMMENT: IF: Good blow . surf. - 9"  
IS: No blow  
FF: Fair blow . surf. - 6"  
FS: No blow



## PRESSURE SUMMARY

Time (Min.)	Pressure (psig)	Temp (deg F)	Annotation
0	2599.95	105.73	Initial Hydro-static
2	84.01	105.49	Open To Flow (1)
7	47.12	106.13	Shut-In(1)
66	243.81	112.36	End Shut-In(1)
66	69.20	111.90	Open To Flow (2)
157	74.10	114.13	Shut-In(2)
281	136.83	116.76	End Shut-In(2)
283	2571.99	119.52	Final Hydro-static

## Recovery

Length (ft)	Description	Volume (bbl)
75.00	mud 100% mud	0.37
0.00	300' GIP	0.00

\* Recovery from multiple tests

## Gas Rates

	Choke (inches)	Pressure (psig)	Gas Rate (m <sup>3</sup> /d)



**TRILOBITE TESTING, INC**

# DRILL STEM TEST REPORT

McCoy Petroleum Corp.  
 8080 E. Central Ste. 300  
 Wichita, KS 67206  
 ATTN: Dave Williams

**6-30s-30w Meade, KS**  
**MAX-NEVA "A" 1-6**  
 Job Ticket: 51865 **DST#: 2**  
 Test Start: 2014.01.10 @ 00:06:00

**GENERAL INFORMATION:**

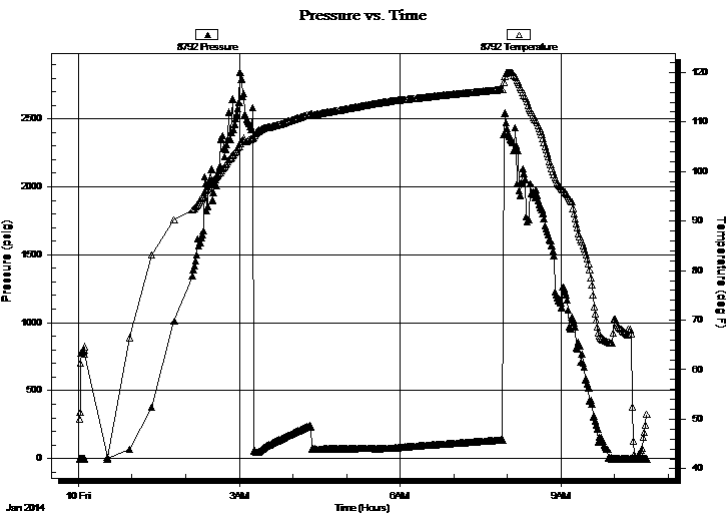
Formation: <b>Morrow / Chester</b>	Test Type: Conventional Bottom Hole (Reset)
Deviated: No Whipstock: ft (KB)	Tester: Ryan Reynolds
Time Tool Opened: 03:15:45	Unit No: 48
Time Test Ended: 10:33:45	Reference Elevations: 2832.00 ft (KB)
<b>Interval: 5208.00 ft (KB) To 5310.00 ft (KB) (TVD)</b>	2821.00 ft (CF)
Total Depth: 5310.00 ft (KB) (TVD)	KB to GR/CF: 11.00 ft
Hole Diameter: 7.88 inches	Hole Condition: Fair

**Serial #: 8792 Outside**

Press@RunDepth: psig @ 5212.00 ft (KB)	Capacity: 8000.00 psig
Start Date: 2014.01.10	End Date: 2014.01.10
Start Time: 00:01:17	End Time: 10:36:15
Last Calib.: 2014.01.10	Time On Btm:
Time Off Btm:	

TEST COMMENT: IF: Good blow . surf. - 9"  
 IS: No blow  
 FF: Fair blow . surf. - 6"  
 FS: No blow

**PRESSURE SUMMARY**



Time (Min.)	Pressure (psig)	Temp (deg F)	Annotation

**Recovery**

Length (ft)	Description	Volume (bbl)
75.00	mud 100% mud	0.37
0.00	300' GIP	0.00

**Gas Rates**

Choke (inches)	Pressure (psig)	Gas Rate (m³/d)

\* Recovery from multiple tests



**TRILOBITE  
TESTING, INC**

# DRILL STEM TEST REPORT

**TOOL DIAGRAM**

McCoy Petroleum Corp.

**6-30s-30w Meade, KS**

8080 E. Central Ste. 300  
Wichita, KS 67206

**MAX-NEVA "A" 1-6**

Job Ticket: 51865

**DST#: 2**

ATTN: Dave Williams

Test Start: 2014.01.10 @ 00:06:00

## Tool Information

Drill Pipe:	Length: 4904.00 ft	Diameter: 3.80 inches	Volume: 68.79 bbl	Tool Weight:	2400.00 lb
Heavy Wt. Pipe:	Length: 0.00 ft	Diameter: 0.00 inches	Volume: 0.00 bbl	Weight set on Packer:	25000.00 lb
Drill Collar:	Length: 308.00 ft	Diameter: 2.25 inches	Volume: 1.51 bbl	Weight to Pull Loose:	116000.0 lb
			<u>Total Volume: 70.30 bbl</u>	Tool Chased	0.00 ft
Drill Pipe Above KB:	31.00 ft			String Weight: Initial	92000.00 lb
Depth to Top Packer:	5208.00 ft			Final	93000.00 lb
Depth to Bottom Packer:	ft				
Interval between Packers:	102.00 ft				
Tool Length:	129.00 ft				
Number of Packers:	2	Diameter: 6.75 inches			
Tool Comments:					

## Tool Description

Tool Description	Length (ft)	Serial No.	Position	Depth (ft)	Accum. Lengths
Change Over Sub	1.00			5182.00	
Shut In Tool	5.00			5187.00	
Hydraulic tool	5.00			5192.00	
Jars	5.00			5197.00	
Safety Joint	2.00			5199.00	
Packer	5.00			5204.00	27.00 Bottom Of Top Packer
Packer	4.00			5208.00	
Stubb	1.00			5209.00	
Perforations	2.00			5211.00	
Change Over Sub	1.00			5212.00	
Recorder	0.00	8790	Inside	5212.00	
Recorder	0.00	8792	Outside	5212.00	
Drill Pipe	63.00			5275.00	
Change Over Sub	1.00			5276.00	
Perforations	31.00			5307.00	
Bullnose	3.00			5310.00	102.00 Bottom Packers & Anchor
<b>Total Tool Length:</b>	<b>129.00</b>				



**TRILOBITE  
TESTING, INC**

# DRILL STEM TEST REPORT

## FLUID SUMMARY

McCoy Petroleum Corp.  
8080 E. Central Ste. 300  
Wichita, KS 67206  
ATTN: Dave Williams

**6-30s-30w Meade, KS**  
**MAX-NEVA "A" 1-6**  
Job Ticket: 51865      **DST#: 2**  
Test Start: 2014.01.10 @ 00:06:00

### Mud and Cushion Information

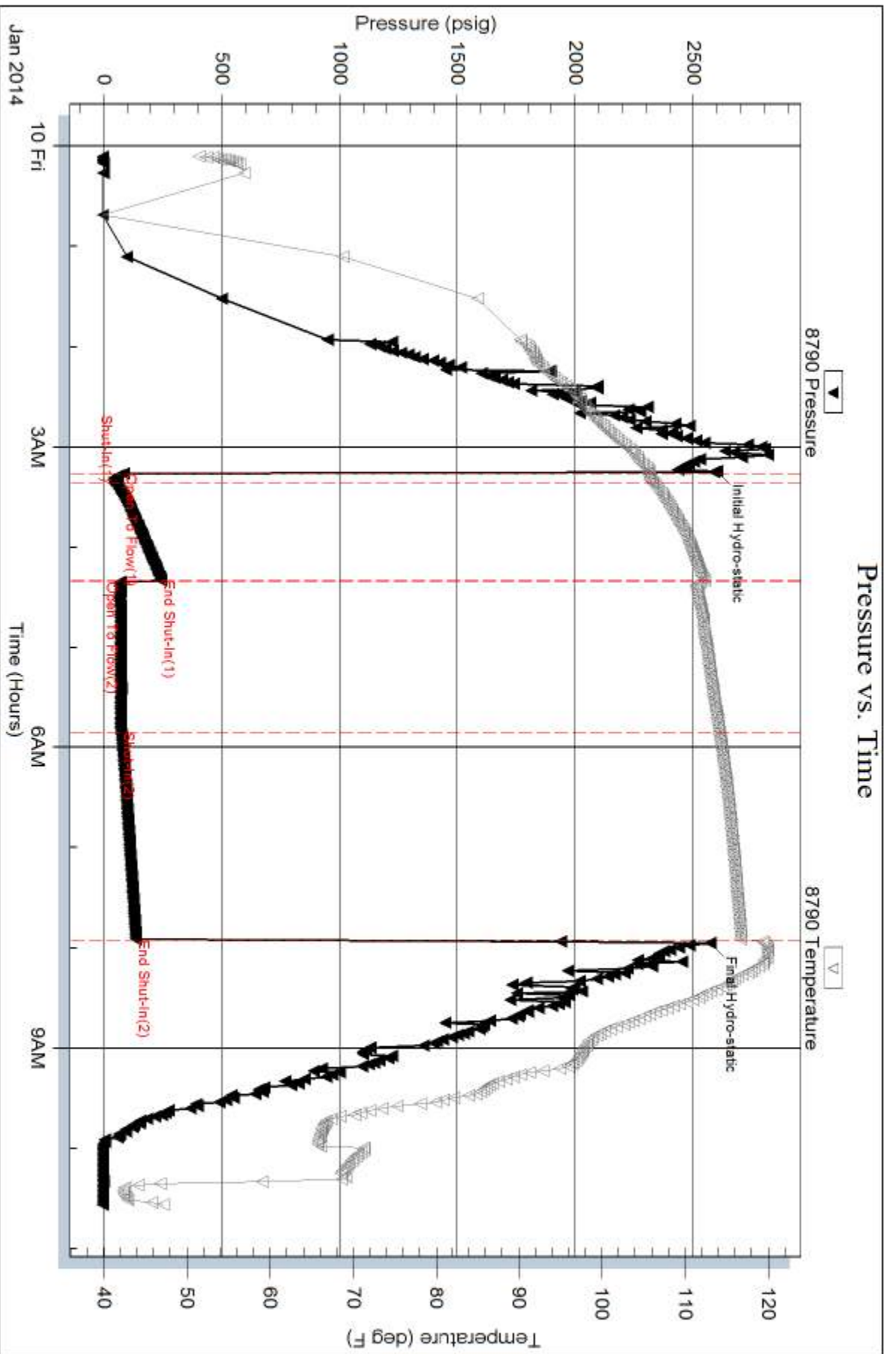
Mud Type: Gel Chem	Cushion Type:	Oil API:	deg API
Mud Weight: 9.00 lb/gal	Cushion Length: ft	Water Salinity:	1600 ppm
Viscosity: 54.00 sec/qt	Cushion Volume: bbl		
Water Loss: 7.99 in <sup>3</sup>	Gas Cushion Type:		
Resistivity: ohm.m	Gas Cushion Pressure: psig		
Salinity: 1600.00 ppm			
Filter Cake: 0.02 inches			

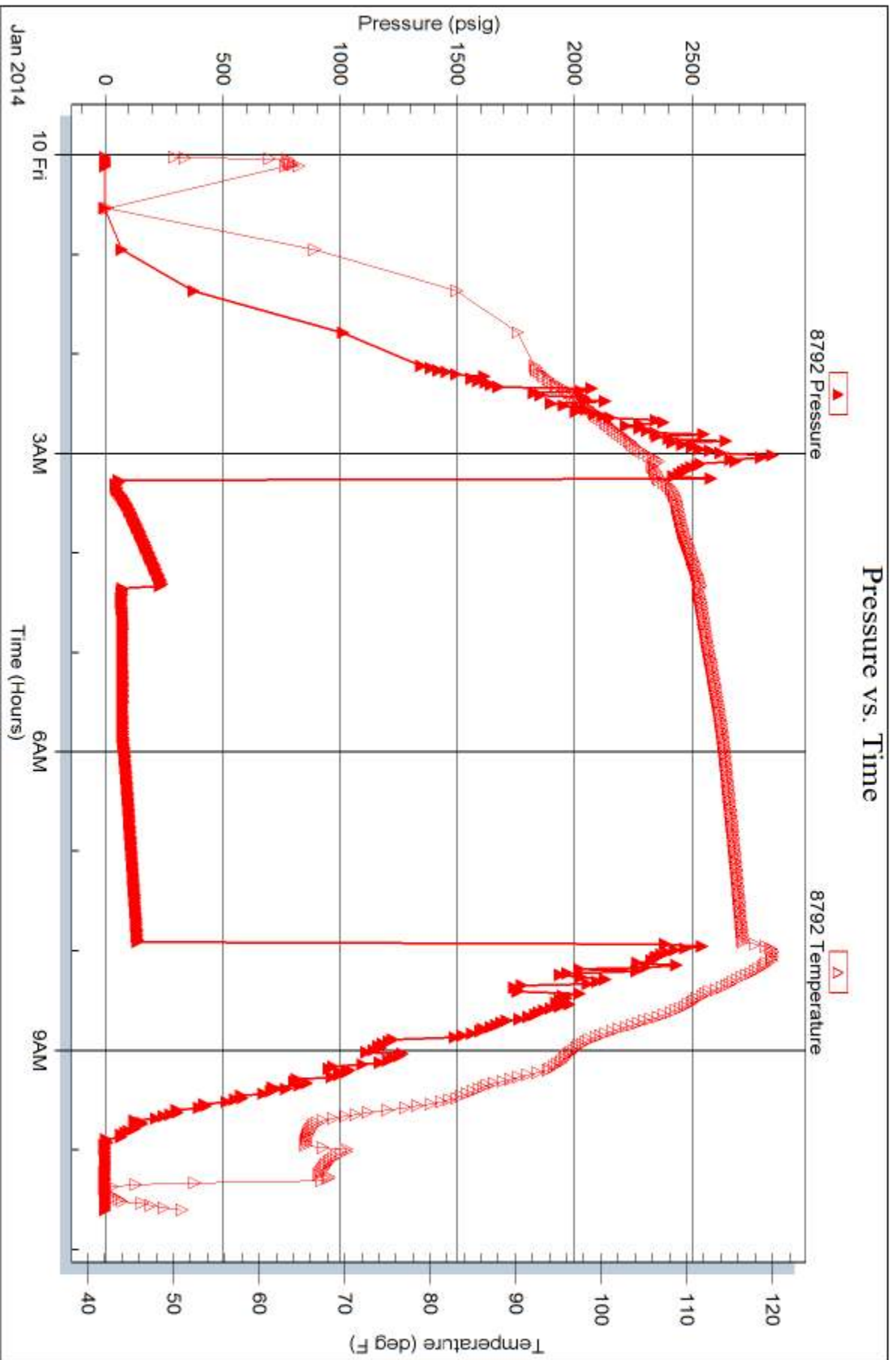
### Recovery Information

Recovery Table

Length ft	Description	Volume bbl
75.00	mud 100% mud	0.369
0.00	300' GIP	0.000

Total Length: 75.00 ft      Total Volume: 0.369 bbl  
 Num Fluid Samples: 0      Num Gas Bombs: 0      Serial #: none  
 Laboratory Name:      Laboratory Location:  
 Recovery Comments:







# TRILOBITE TESTING INC.

1515 Commerce Parkway • Hays, Kansas 67601

## Test Ticket

NO. 51864

4/10

Well Name & No. MAX-NEVA "A" 1-6 Test No. 1 Date 1-9-13  
 Company McCoy Petro. Corp. Elevation 2832 KB 2821 GL  
 Address 8080 E. Central Ste. 300 Wichita, KS 67206  
 Co. Rep / Geo. Dave Williams Rig Sterling # 2  
 Location: Sec. 6 Twp. 30s. Rge. 30w. Co. Menard State KS

Interval Tested 5210-5270 Zone Tested Morrow  
 Anchor Length 60 Drill Pipe Run 4904 Mud Wt. 9.0+  
 Top Packer Depth 5205 Drill Collars Run 308 Vis 55  
 Bottom Packer Depth 5210 Wt. Pipe Run Ø WL 7.2  
 Total Depth 5270 Chlorides 1600 ppm System LCM 4 1/2 #  
 Blow Description IF: Good blow. 1/2" - 7" ISI: No blow.  
FF: Fair blow. 1/2 - 4" FSI: No blow.

Rec	Feet of	%gas	%oil	%water	%mud
235	GIP	100			
65	Dry mud			100	
	(very slight spkdm in hyd. tool)				

Rec Total 300 BHT 123 Gravity N/C API RW ██ @ ██ °F Chlorides 1600 ppm  
 (A) Initial Hydrostatic 2702  Test 1350 T-On Location 0015  
 (B) First Initial Flow 65  Bars 250 T-Started 0315  
 (C) First Final Flow 24  Safety Joint 75 T-Open 0605  
 (D) Initial Shut-In 197  Circ Sub \_\_\_\_\_ T-Pulled 1030  
 (E) Second Initial Flow 39  Hourly Standby 2 hrs. T-Out 1334  
 (F) Second Final Flow 47  Mileage 260 174rt 269.70  
 (G) Final Shut-In 97  Sampler \_\_\_\_\_  
 (H) Final Hydrostatic 2476  Straddle \_\_\_\_\_  
 Shale Packer \_\_\_\_\_  
 Shale Packer \_\_\_\_\_  
 Extra Packer \_\_\_\_\_  
 Extra Recorder \_\_\_\_\_  
 Day Standby \_\_\_\_\_  
 Accessibility \_\_\_\_\_  
 Sub Total 1944.70

Initial Open 5  
 Initial Shut-In 60  
 Final Flow 90  
 Final Shut-In 120

Comments \_\_\_\_\_  
 Ruined Shale Packer \_\_\_\_\_  
 Ruined Packer \_\_\_\_\_  
 Extra Copies \_\_\_\_\_  
 Sub Total 0  
 Total 1944.70  
 MP/DST Disc't \_\_\_\_\_

Approved By Daniel P. Williams Our Representative Ryan Reynolds  
 Trilobite Testing Inc. shall not be liable for damaged of any kind of the property or personnel of the one for whom a test is made, or for any loss suffered or sustained, directly or indirectly, through the use of its equipment, or its statements or opinion concerning the results of any test, tools lost or damaged in the hole shall be paid for at cost by the party for whom the test is made.



# TRILOBITE TESTING INC.

1515 Commerce Parkway • Hays, Kansas 67601

## Test Ticket

NO. 51865

4/10

Well Name & No. MAX-NEVA "A" 1-6 Test No. 2 Date 1-9-13  
 Company McCoy Petro. Corp. Elevation 2832 KB 2821 GL  
 Address 8080 E. Central Ste. 300 Wichita, KS 67206  
 Co. Rep / Geo. Dave Williams Rig Sterling 2  
 Location: Sec. 6 Twp. 30s. Rge. 30w. Co. Meade State KS

Interval Tested 5208-5310 Zone Tested Chester/Marrow  
 Anchor Length 102 Drill Pipe Run 4904 Mud Wt. 9.0+  
 Top Packer Depth 5203 Drill Collars Run 308 Vis 54  
 Bottom Packer Depth 5208 Wt. Pipe Run Ø WL 8.0  
 Total Depth 5310 Chlorides 1600 ppm System LCM 14#  
 Blow Description IF: Good blow surf. - 9" ISI: No Blow.  
FF: Fair blow surf. - 6" FSI: No blow.

Rec	Feet of	%gas	%oil	%water	%mud
<u>300</u>	<u>GIP</u>	<u>100</u>			
<u>75</u>	<u>Mud</u>			<u>100</u>	

Rec Total 375 BHT \_\_\_\_\_ Gravity N/C API RW N/C @ N/C°F Chlorides 1600 ppm  
 (A) Initial Hydrostatic 2600  Test 1350 T-On Location 2330  
 (B) First Initial Flow 84  Jars 250 T-Started 0006  
 (C) First Final Flow 47  Safety Joint 75 T-Open 0315  
 (D) Initial Shut-In 244  Circ Sub \_\_\_\_\_ T-Pulled 0750  
 (E) Second Initial Flow 69  Hourly Standby \_\_\_\_\_ T-Out 1034  
 (F) Second Final Flow 74  Mileage Test P.U. Tools 260 + 260 Comments \_\_\_\_\_  
 (G) Final Shut-In 137  Sampler 539.40 \_\_\_\_\_  
 (H) Final Hydrostatic 2572  Straddle \_\_\_\_\_  Ruined Shale Packer \_\_\_\_\_  
 Shale Packer \_\_\_\_\_  Ruined Packer \_\_\_\_\_  
 Extra Packer \_\_\_\_\_  Extra Copies \_\_\_\_\_  
 Extra Recorder \_\_\_\_\_ Sub Total 800  
 Day Standby P.U. Tools @ 3am Total 12-14 3014.40  
 Accessibility 1d 16.5h MP/DST Disc't \_\_\_\_\_  
 Sub Total 2214.40

Approved By Daniel P. Williams Our Representative Ryan Reynolds  
 TriLOBITE TESTING Inc. shall not be liable for damaged of any kind of the property or personnel of the one for whom a test is made, or for any loss suffered or sustained, directly or indirectly, through the use of its equipment, or its statements or opinion concerning the results of any test, tools lost or damaged in the hole shall be paid for at cost by the party for whom the test is made.