



DRILL STEM TEST REPORT

Prepared For: **RJM Company**

Po Box 256 Claflin Kansas
67525

ATTN: Wyatt

Schneider Farm

7-17s-14w- Barton

Start Date: 2014.01.04 @ 05:56:00

End Date: 2014.01.04 @ 12:19:30

Job Ticket #: 19163 DST #: 2

Superior Testers Enterprises LLC
PO Box 138 Great Bend KS 67530
1-800-792-6902

Printed: 2014.01.04 @ 23:32:45



DRILL STEM TEST REPORT

RJM Company
 Po Box 256 Claflin Kansas
 67525
 ATTN: Wyatt

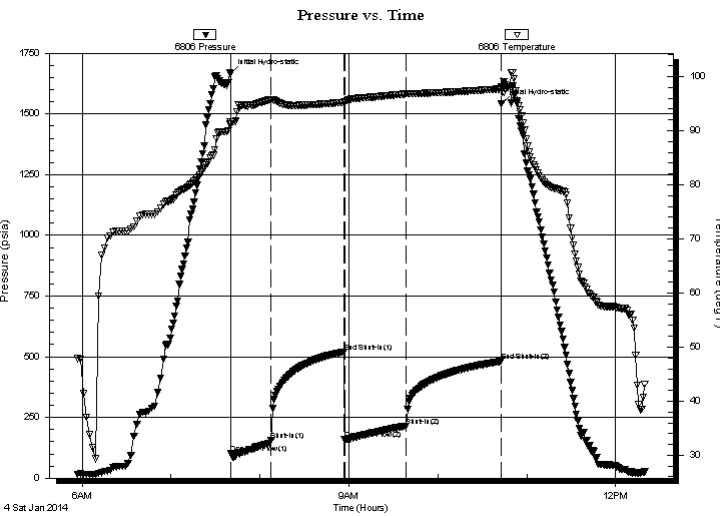
7-17s-14w- Barton
Schneider Farm
 Job Ticket: 19163 **DST#: 2**
 Test Start: 2014.01.04 @ 05:56:00

GENERAL INFORMATION:

Formation: **Lansing H,I,J**
 Deviated: No Whipstock: ft (KB)
 Test Type: Conventional Bottom Hole (Initial)
 Time Tool Opened: 07:40:30 Tester: Dustin Ellis
 Time Test Ended: 12:19:30 Unit No: 3315-Great Bend-45
 Interval: **3304.00 ft (KB) To 3368.00 ft (KB) (TVD)** Reference Elevations: 1947.00 ft (KB)
 Total Depth: 3368.00 ft (KB) (TVD) 1938.00 ft (CF)
 Hole Diameter: 7.88 inches Hole Condition: Fair KB to GR/CF: 9.00 ft

Serial #: 6806 Inside
 Press @ RunDepth: 214.82 psia @ 3364.12 ft (KB) Capacity: 5000.00 psia
 Start Date: 2014.01.04 End Date: 2014.01.04 Last Calib.: 2014.01.04
 Start Time: 05:57:00 End Time: 12:19:30 Time On Btm: 2014.01.04 @ 07:40:00
 Time Off Btm: 2014.01.04 @ 10:43:00

TEST COMMENT: 1st Open 30 minutes Strong building blow built to the bottom of a 5 gallon bucket of water in 12 minutes.
 1st Shut in 45 minutes No blow back.
 2nd Open 45 minutes Good building blow built to bottom bucket 24 minutes.
 2nd Shut in 60 minutes No blow back.



PRESSURE SUMMARY

Time (Min.)	Pressure (psia)	Temp (deg F)	Annotation
0	1666.03	91.61	Initial Hydro-static
1	102.97	91.34	Open To Flow (1)
28	155.53	95.80	Shut-In(1)
77	520.49	95.26	End Shut-In(1)
77	159.98	95.28	Open To Flow (2)
119	214.82	96.81	Shut-In(2)
183	480.85	97.73	End Shut-In(2)
183	1542.40	98.19	Final Hydro-static

Recovery

Length (ft)	Description	Volume (bbl)
180.00	Water ,very lightly oil spotted	2.52
0.00	100%Water	0.00
180.00	Watery mud Mud 40% Water 60%	2.52
0.00	Chlorides 19,000	0.00

Gas Rates

Choke (inches)	Pressure (psia)	Gas Rate (Mcf/d)



DRILL STEM TEST REPORT

TOOL DIAGRAM

RJM Company
 Po Box 256 Claflin Kansas
 67525
 ATTN: Wyatt

7-17s-14w- Barton
Schneider Farm
 Job Ticket: 19163 **DST#: 2**
 Test Start: 2014.01.04 @ 05:56:00

Tool Information

Drill Pipe:	Length: 3308.00 ft	Diameter: 3.80 inches	Volume: 46.40 bbl	Tool Weight:	2000.00 lb
Heavy Wt. Pipe:	Length: 0.00 ft	Diameter: 0.00 inches	Volume: 0.00 bbl	Weight set on Packer:	20000.00 lb
Drill Collar:	Length: 0.00 ft	Diameter: 0.00 inches	Volume: 0.00 bbl	Weight to Pull Loose:	67000.00 lb
			<u>Total Volume: 46.40 bbl</u>	Tool Chased	3.00 ft
Drill Pipe Above KB:	24.00 ft			String Weight: Initial	50000.00 lb
Depth to Top Packer:	3304.00 ft			Final	50000.00 lb
Depth to Bottom Packer:	ft				
Interval between Packers:	64.12 ft				
Tool Length:	84.12 ft				
Number of Packers:	2	Diameter: 6.75 inches			
Tool Comments:					

Tool Description	Length (ft)	Serial No.	Position	Depth (ft)	Accum. Lengths
-------------------------	--------------------	-------------------	-----------------	-------------------	-----------------------

Shut-In Tool	5.00			3289.00	
Hydraulic Tool	5.00			3294.00	
Packer	5.00			3299.00	20.00 Bottom Of Top Packer
Packer	5.00			3304.00	
Anchor	5.00			3309.00	
Change Over Sub	0.75			3309.75	
Drill Pipe	31.62			3341.37	
Change Over Sub	0.75			3342.12	
Anchor	21.00			3363.12	
Recorder	1.00	6806	Inside	3364.12	
Recorder	1.00	8524	Outside	3365.12	
Bull Plug	3.00			3368.12	64.12 Bottom Packers & Anchor

Total Tool Length: 84.12



DRILL STEM TEST REPORT

FLUID SUMMARY

RJM Company

7-17s-14w- Barton

Po Box 256 Claflin Kansas
67525

Schneider Farm

Job Ticket: 19163

DST#: 2

ATTN: Wyatt

Test Start: 2014.01.04 @ 05:56:00

Mud and Cushion Information

Mud Type: Gel Chem
Mud Weight: 9.00 lb/gal
Viscosity: 44.00 sec/qt
Water Loss: 8.79 in³
Resistivity: ohm.m
Salinity: 5000.00 ppm
Filter Cake: 1.00 inches

Cushion Type:
Cushion Length: ft
Cushion Volume: bbl
Gas Cushion Type:
Gas Cushion Pressure: psia

Oil API: deg API
Water Salinity: ppm

Recovery Information

Recovery Table

Length ft	Description	Volume bbl
180.00	Water ,very lightly oil spotted	2.525
0.00	100%Water	0.000
180.00	Watery mud Mud 40% Water 60%	2.525
0.00	Chlorides 19,000	0.000

Total Length: 360.00 ft Total Volume: 5.050 bbl

Num Fluid Samples: 0

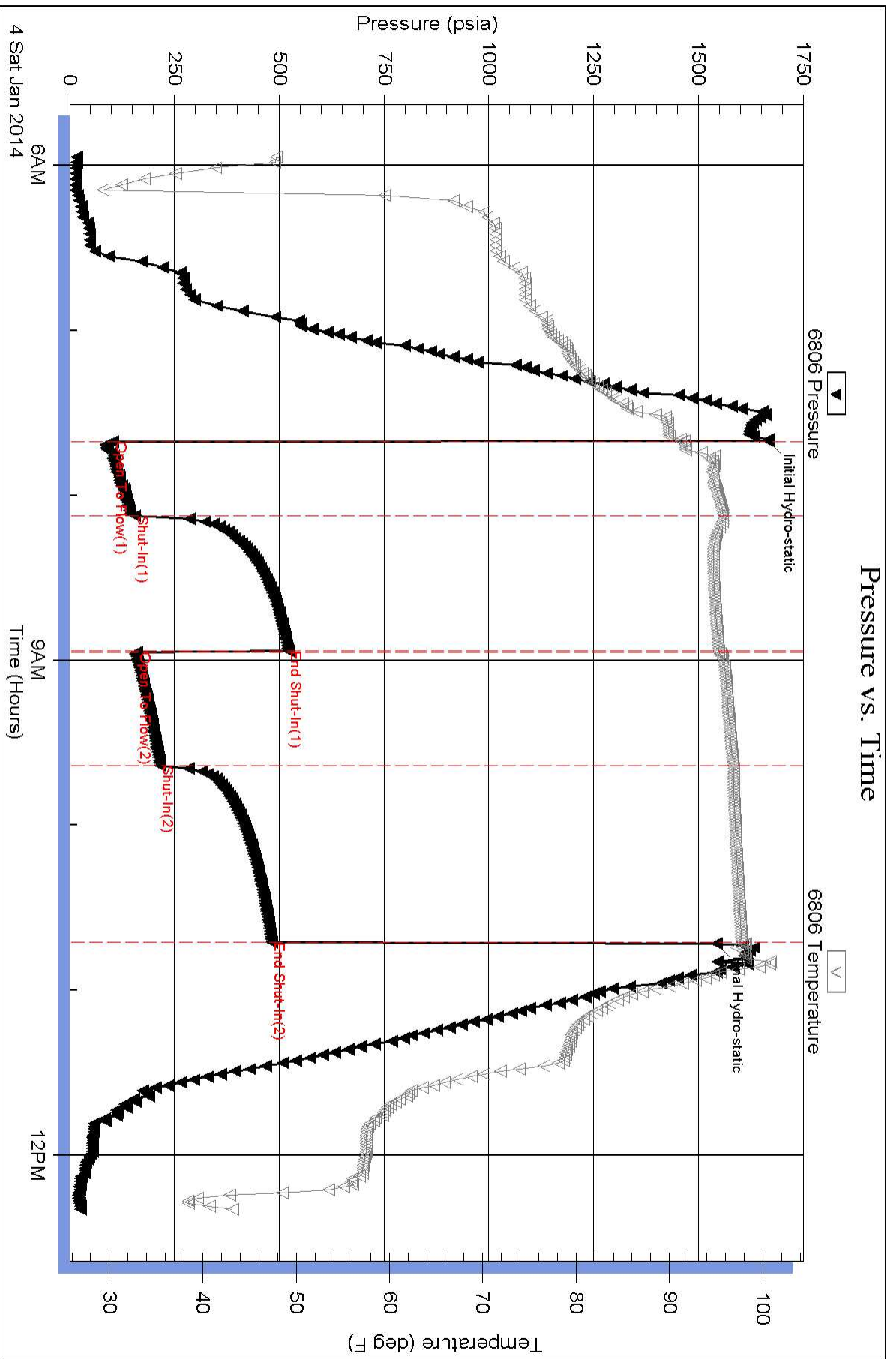
Num Gas Bombs: 0

Serial #:

Laboratory Name:

Laboratory Location:

Recovery Comments:



Pressure vs. Time

