



DRILL STEM TEST REPORT

Prepared For: **RJM Company**

Po Box 256 Claflin Kansas
67525

ATTN: Wyatt

Schneider Farm

7-17s-14w- Barton

Start Date: 2014.01.05 @ 11:31:00

End Date: 2014.01.06 @ 14:30:29

Job Ticket #: 19164 DST #: 3

Superior Testers Enterprises LLC
PO Box 138 Great Bend KS 67530
1-800-792-6902

Printed: 2014.01.05 @ 16:25:17

RJM Company
7-17s-14w- Barton
Schneider Farm
DST # 3
Arbuckle
2014.01.05



DRILL STEM TEST REPORT

RJM Company
 Po Box 256 Claflin Kansas
 67525
 ATTN: Wyatt

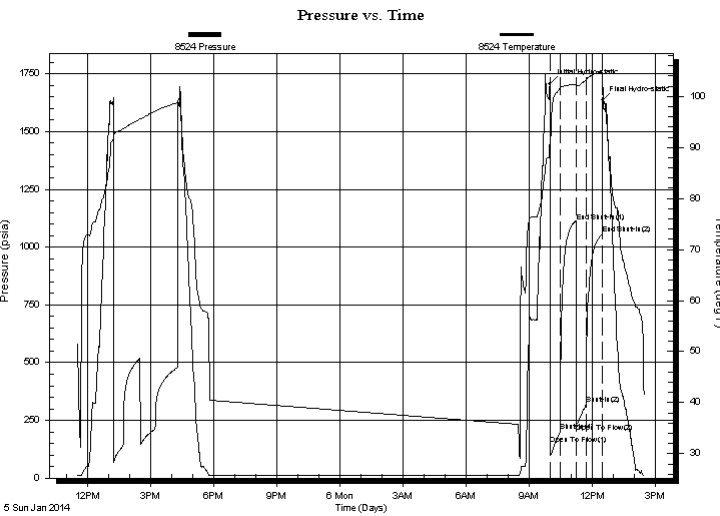
7-17s-14w- Barton
Schneider Farm
 Job Ticket: 19164 **DST#: 3**
 Test Start: 2014.01.05 @ 11:31:00

GENERAL INFORMATION:

Formation: **Arbuckle**
 Deviated: No Whipstock: ft (KB)
 Test Type: Conventional Bottom Hole (Initial)
 Time Tool Opened: 09:59:59 Tester: Dustin Ellis
 Time Test Ended: 14:30:29 Unit No: 3315-Great Bend-45
 Interval: **3384.00 ft (KB) To 3446.00 ft (KB) (TVD)** Reference Elevations: 1947.00 ft (KB)
 Total Depth: 3446.00 ft (KB) (TVD) 1938.00 ft (CF)
 Hole Diameter: 7.88 inches Hole Condition: Fair KB to GR/CF: 9.00 ft

Serial #: 8524 Outside
 Press @ Run Depth: 318.55 psia @ 3443.08 ft (KB) Capacity: 5000.00 psia
 Start Date: 2014.01.05 End Date: 2014.01.06 Last Calib.: 2014.01.05
 Start Time: 11:31:00 End Time: 14:30:29 Time On Btm: 2014.01.06 @ 09:59:29
 Time Off Btm: 2014.01.06 @ 12:29:29

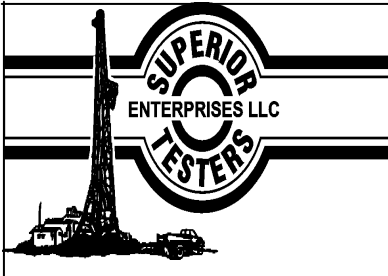
TEST COMMENT: 1st Open 30 minutes Good building blow blew off bottom bucket in 2.5 minutes.
 1st Shut in 45 minutes Yes blow back 10 inches.
 2nd Open 30 minutes Strong building blow blew off the bottom of a 5 gallon bucket of water in 45 sec.
 2nd Shut in 45 minutes Yes blow back 10 inches.



PRESSURE SUMMARY			
Time (Min.)	Pressure (psia)	Temp (deg F)	Annotation
0	1706.01	91.35	Initial Hydro-static
1	145.41	90.98	Open To Flow (1)
29	202.90	101.66	Shut-In(1)
76	1109.63	102.44	End Shut-In(1)
76	235.58	102.22	Open To Flow (2)
104	318.55	103.22	Shut-In(2)
150	1058.10	104.70	End Shut-In(2)
150	1634.45	104.51	Final Hydro-static

Recovery		
Length (ft)	Description	Volume (bbl)
360.00	Clean gassy oil Oil 100%	5.05
370.00	Gassy oil cut mud	5.19
0.00	Oil50% Gas10% Mud40%	0.00
0.00	300Ft. gas in pipe.	0.00
0.00	Gravity of oil 39	0.00

Gas Rates			
	Choke (inches)	Pressure (psia)	Gas Rate (Mcf/d)



DRILL STEM TEST REPORT

TOOL DIAGRAM

RJM Company
 Po Box 256 Claflin Kansas
 67525
 ATTN: Wyatt

7-17s-14w- Barton
Schneider Farm
 Job Ticket: 19164 **DST#: 3**
 Test Start: 2014.01.05 @ 11:31:00

Tool Information

Drill Pipe:	Length: 3372.00 ft	Diameter: 3.80 inches	Volume: 47.30 bbl	Tool Weight: 2000.00 lb
Heavy Wt. Pipe:	Length: 0.00 ft	Diameter: 0.00 inches	Volume: 0.00 bbl	Weight set on Packer: 20000.00 lb
Drill Collar:	Length: 0.00 ft	Diameter: 0.00 inches	Volume: 0.00 bbl	Weight to Pull Loose: 62000.00 lb
			Total Volume: 47.30 bbl	Tool Chased 2.00 ft
Drill Pipe Above KB:	8.00 ft			String Weight: Initial 50000.00 lb
Depth to Top Packer:	3384.00 ft			Final 52000.00 lb
Depth to Bottom Packer:	ft			
Interval between Packers:	62.08 ft			
Tool Length:	82.08 ft			
Number of Packers:	2	Diameter:	6.75 inches	
Tool Comments:				

Tool Description	Length (ft)	Serial No.	Position	Depth (ft)	Accum. Lengths
------------------	-------------	------------	----------	------------	----------------

Shut-In Tool	5.00			3369.00	
Hydraulic Tool	5.00			3374.00	
Packer	5.00			3379.00	20.00 Bottom Of Top Packer
Packer	5.00			3384.00	
Anchor	5.00			3389.00	
Change Over Sub	0.75			3389.75	
Drill Pipe	30.58			3420.33	
Change Over Sub	0.75			3421.08	
Anchor	20.00			3441.08	
Recorder	1.00	6806	Inside	3442.08	
Recorder	1.00	8524	Outside	3443.08	
Bull Plug	3.00			3446.08	62.08 Bottom Packers & Anchor

Total Tool Length: 82.08



DRILL STEM TEST REPORT

FLUID SUMMARY

RJM Company

7-17s-14w- Barton

Po Box 256 Claflin Kansas
67525

Schneider Farm

Job Ticket: 19164

DST#: 3

ATTN: Wyatt

Test Start: 2014.01.05 @ 11:31:00

Mud and Cushion Information

Mud Type: Gel Chem
 Mud Weight: 9.00 lb/gal
 Viscosity: 49.00 sec/qt
 Water Loss: 8.20 in³
 Resistivity: ohm.m
 Salinity: 6000.00 ppm
 Filter Cake: 1.00 inches

Cushion Type:
 Cushion Length: ft
 Cushion Volume: bbl
 Gas Cushion Type:
 Gas Cushion Pressure: psia

Oil API: deg API
 Water Salinity: ppm

Recovery Information

Recovery Table

Length ft	Description	Volume bbl
360.00	Clean gassy oil Oil 100%	5.050
370.00	Gassy oil cut mud	5.190
0.00	Oil50% Gas10% Mud40%	0.000
0.00	300Ft. gas in pipe.	0.000
0.00	Gravity of oil 39	0.000

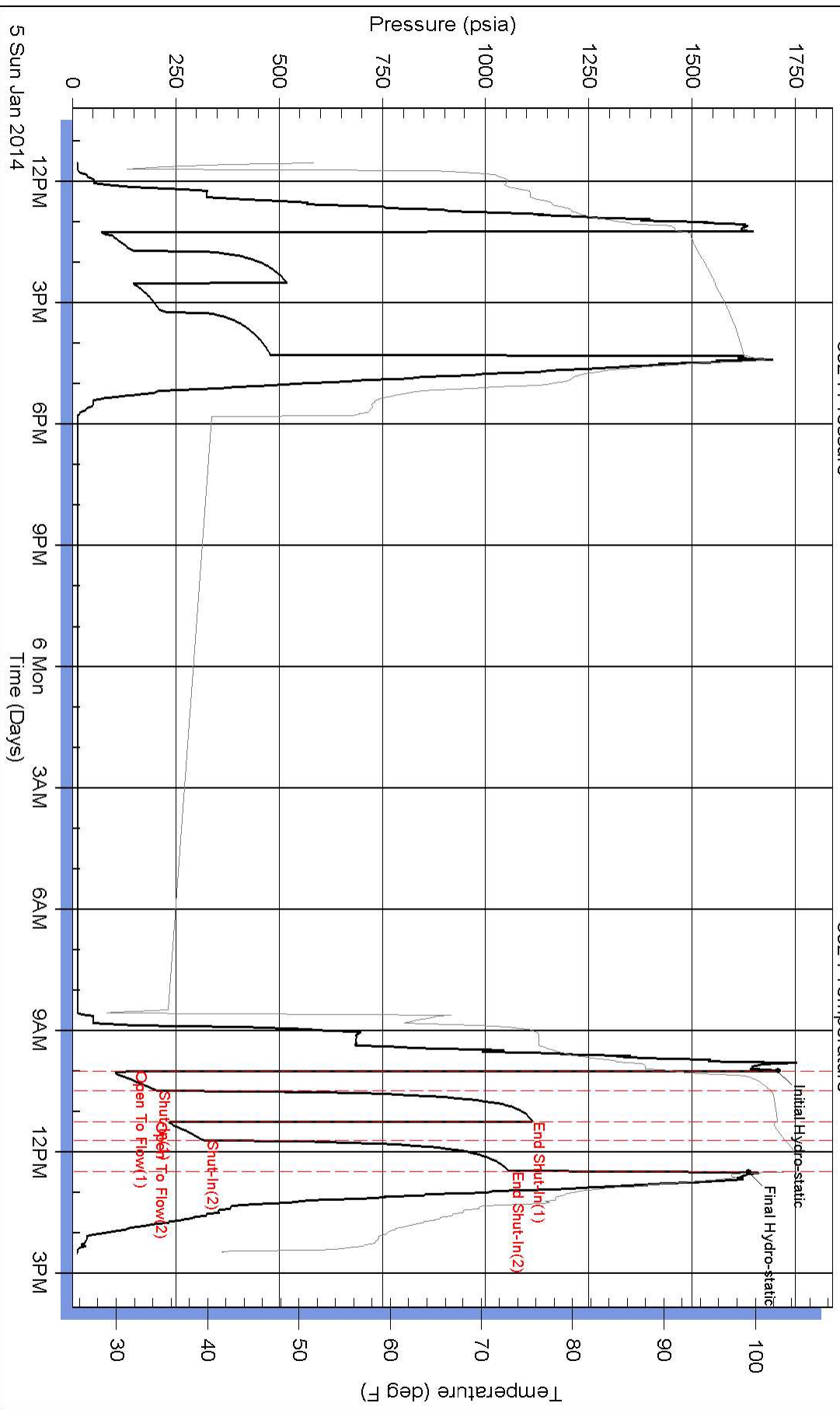
Total Length: 730.00 ft Total Volume: 10.240 bbl

Num Fluid Samples: 0 Num Gas Bombs: 0 Serial #:

Laboratory Name: Laboratory Location:

Recovery Comments:

Pressure vs. Time



Pressure vs. Time

