



DRILL STEM TEST REPORT

Prepared For: **DaMar Resources Inc**

PO Box 70
Hays KS 67601-3805

ATTN: Randy Kilian

Goddard #2

22 9s 23w Graham,KS

Start Date: 2013.09.30 @ 03:47:00

End Date: 2013.09.30 @ 11:55:00

Job Ticket #: 52253 DST #: 1

Trilobite Testing, Inc

PO Box 362 Hays, KS 67601

ph: 785-625-4778 fax: 785-625-5620

Printed: 2013.10.03 @ 13:18:06



**TRILOBITE
TESTING, INC.**

DRILL STEM TEST REPORT

DaMar Resources Inc
PO Box 70
Hays KS 67601-3805
ATTN: Randy Kilian

22 9s 23w Graham, KS

Goddard #2

Job Ticket: 52253

DST#: 1

Test Start: 2013.09.30 @ 03:47:00

GENERAL INFORMATION:

Formation: **LKC " C "**

Deviated: No Whipstock: 2327.00 ft (KB)

Time Tool Opened: 06:29:45

Time Test Ended: 11:55:00

Test Type: Conventional Bottom Hole (Initial)

Tester: Jim Svaty

Unit No: 54

Interval: 3680.00 ft (KB) To 3696.00 ft (KB) (TVD)

Total Depth: 3696.00 ft (KB) (TVD)

Hole Diameter: 7.88 inches Hole Condition: Fair

Reference Elevations: 2327.00 ft (KB)

2322.00 ft (CF)

KB to GR/CF: 5.00 ft

Serial #: 8289 Outside

Press @ Run Depth: 64.05 psig @ 3681.00 ft (KB)

Start Date: 2013.09.30

End Date:

2013.09.30

Start Time: 03:47:02

End Time:

11:54:30

Capacity: 8000.00 psig

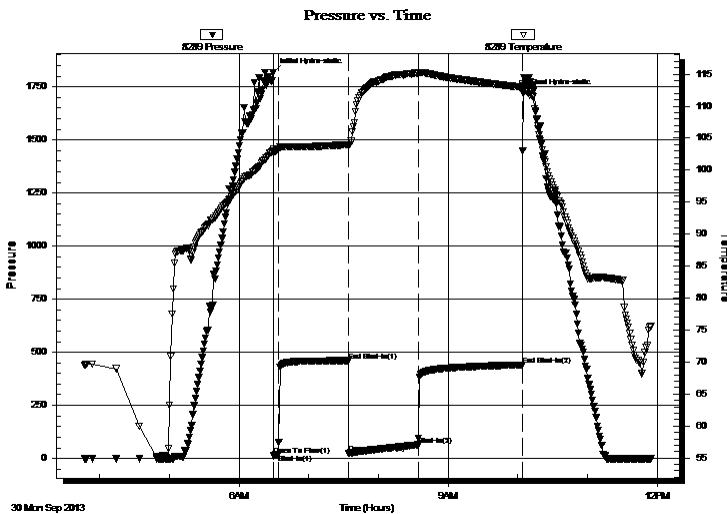
Last Calib.: 2013.09.30

Time On Btm: 2013.09.30 @ 06:29:30

Time Off Btm: 2013.09.30 @ 10:04:30

TEST COMMENT: 5-IFP- Surface Blow Building to 1"
60-ISIP- Weak Surface Blow
60-FFP- Surface Blow Building to 8"
90-FSIP- No Blow

PRESSURE SUMMARY



Time (Min.)	Pressure (psig)	Temp (deg F)	Annotation
0	1817.50	103.32	Initial Hydro-static
1	12.61	102.76	Open To Flow (1)
5	21.07	103.31	Shut-In(1)
65	460.22	104.00	End Shut-In(1)
65	22.69	103.83	Open To Flow (2)
125	64.05	115.19	Shut-In(2)
215	439.88	112.94	End Shut-In(2)
215	1716.60	113.19	Final Hydro-static

Recovery

Length (ft)	Description	Volume (bbl)
110.00	MCW 5% m 95% w	1.27
0.00	10 GIP	0.00

Gas Rates

	Choke (inches)	Pressure (psig)	Gas Rate (Mcf/d)



**TRILOBITE
TESTING, INC.**

DRILL STEM TEST REPORT

TOOL DIAGRAM

DaMar Resources Inc

22 9s 23w Graham,KS

PO Box 70
Hays KS 67601-3805

Goddard #2

Job Ticket: 52253

DST#: 1

ATTN: Randy Kilian

Test Start: 2013.09.30 @ 03:47:00

Tool Information

Drill Pipe:	Length: 3647.00 ft	Diameter: 3.80 inches	Volume: 51.16 bbl	Tool Weight: 2500.00 lb
Heavy Wt. Pipe:	Length: 0.00 ft	Diameter: 2.75 inches	Volume: 0.00 bbl	Weight set on Packer: 25000.00 lb
Drill Collar:	Length: 30.00 ft	Diameter: 2.25 inches	Volume: 0.15 bbl	Weight to Pull Loose: 52000.00 lb
			<u>Total Volume: 51.31 bbl</u>	Tool Chased 0.00 ft
Drill Pipe Above KB:	20.00 ft			String Weight: Initial 48000.00 lb
Depth to Top Packer:	3680.00 ft			Final 48000.00 lb
Depth to Bottom Packer:	ft			
Interval between Packers:	16.00 ft			
Tool Length:	39.00 ft			
Number of Packers:	2	Diameter: 6.75 inches		

Tool Comments:

Tool Description	Length (ft)	Serial No.	Position	Depth (ft)	Accum. Lengths
------------------	-------------	------------	----------	------------	----------------

Change Over Sub	1.00			3658.00	
Shut In Tool	5.00			3663.00	
Hydraulic tool	5.00			3668.00	
Safety Joint	2.00			3670.00	
Packer	5.00			3675.00	23.00 Bottom Of Top Packer
Packer	5.00			3680.00	
Stubb	1.00			3681.00	
Recorder	0.00	8789	Inside	3681.00	
Recorder	0.00	8289	Outside	3681.00	
Perforations	12.00			3693.00	
Bullnose	3.00			3696.00	16.00 Bottom Packers & Anchor

Total Tool Length: 39.00



**TRILOBITE
TESTING, INC.**

DRILL STEM TEST REPORT

FLUID SUMMARY

DaMar Resources Inc
PO Box 70
Hays KS 67601-3805
ATTN: Randy Kilian

22 9s 23w Graham,KS
Goddard #2
Job Ticket: 52253 **DST#: 1**
Test Start: 2013.09.30 @ 03:47:00

Mud and Cushion Information

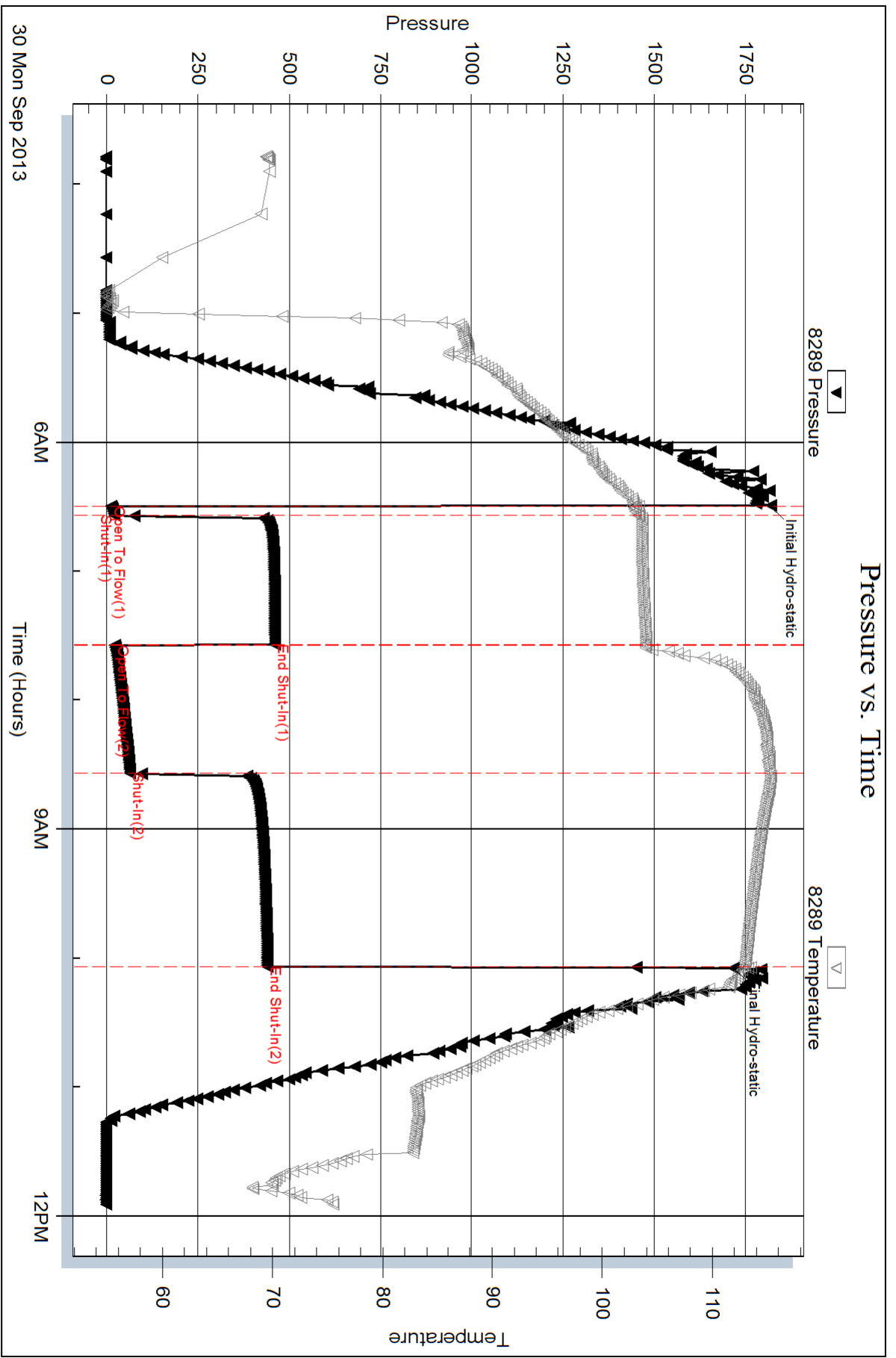
Mud Type: Gel Chem	Cushion Type:	Oil API:	deg API
Mud Weight: 9.00 lb/gal	Cushion Length: ft	Water Salinity:	65000 ppm
Viscosity: 65.00 sec/qt	Cushion Volume: bbl		
Water Loss: 7.14 in ³	Gas Cushion Type:		
Resistivity: ohm.m	Gas Cushion Pressure: psig		
Salinity: 400.00 ppm			
Filter Cake: 2.00 inches			

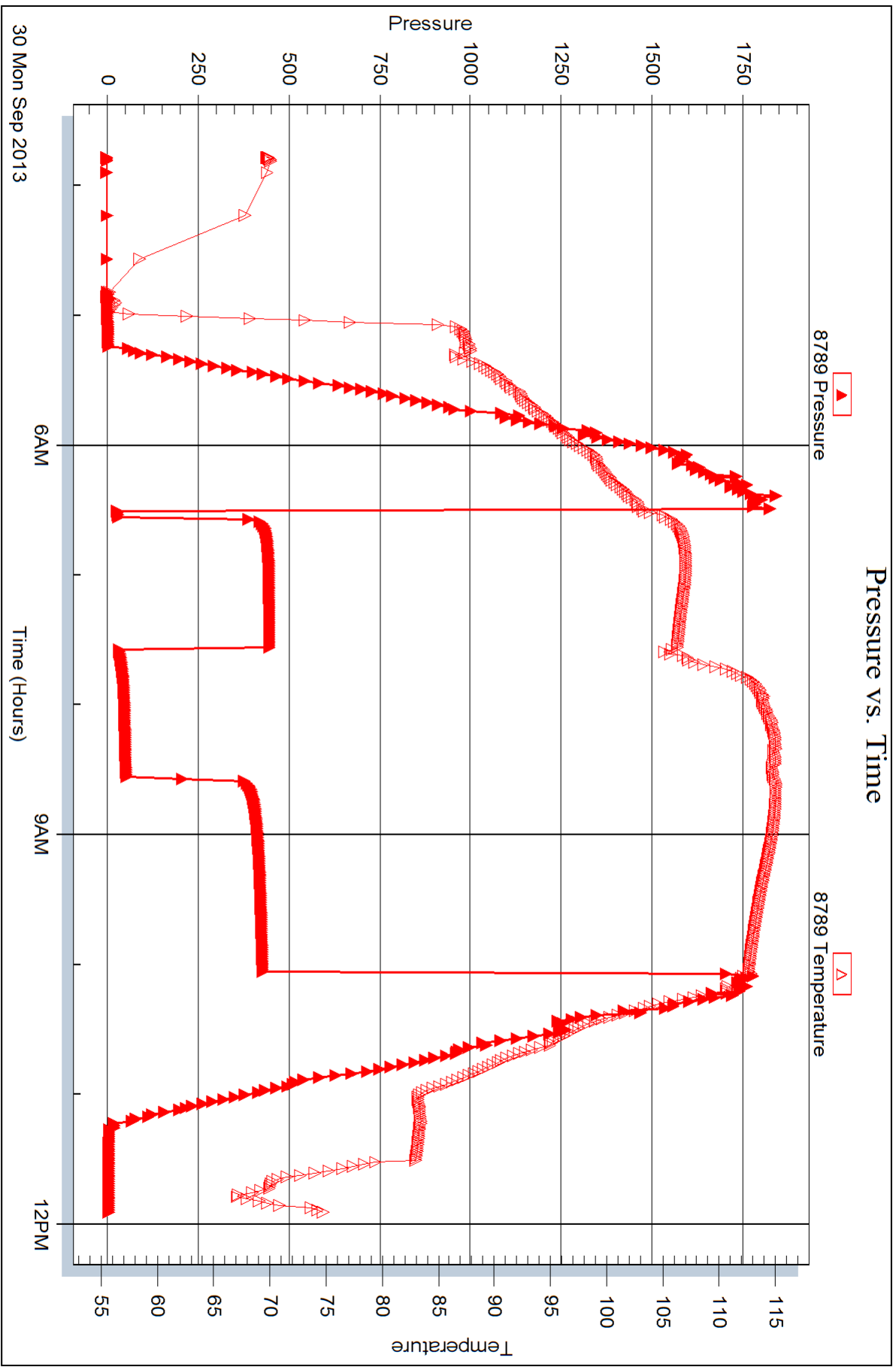
Recovery Information

Recovery Table

Length ft	Description	Volume bbl
110.00	MCW 5% _m 95% _w	1.270
0.00	10 GIP	0.000

Total Length: 110.00 ft Total Volume: 1.270 bbl
 Num Fluid Samples: 0 Num Gas Bombs: 0 Serial #:
 Laboratory Name: Laboratory Location:
 Recovery Comments: .125 @ 72







DRILL STEM TEST REPORT

Prepared For: **DaMar Resources Inc**

PO Box 70
Hays KS 67601-3805

ATTN: Randy Kilian

Goddard #2

22 9s 23w Graham,KS

Start Date: 2013.09.30 @ 18:26:00

End Date: 2013.10.01 @ 01:20:00

Job Ticket #: 52254 DST #: 2

Trilobite Testing, Inc

PO Box 362 Hays, KS 67601

ph: 785-625-4778 fax: 785-625-5620

Printed: 2013.10.03 @ 13:17:29



**TRILOBITE
TESTING, INC.**

DRILL STEM TEST REPORT

DaMar Resources Inc
PO Box 70
Hays KS 67601-3805
ATTN: Randy Kilian

22 9s 23w Graham,KS

Goddard #2

Job Ticket: 52254

DST#: 2

Test Start: 2013.09.30 @ 18:26:00

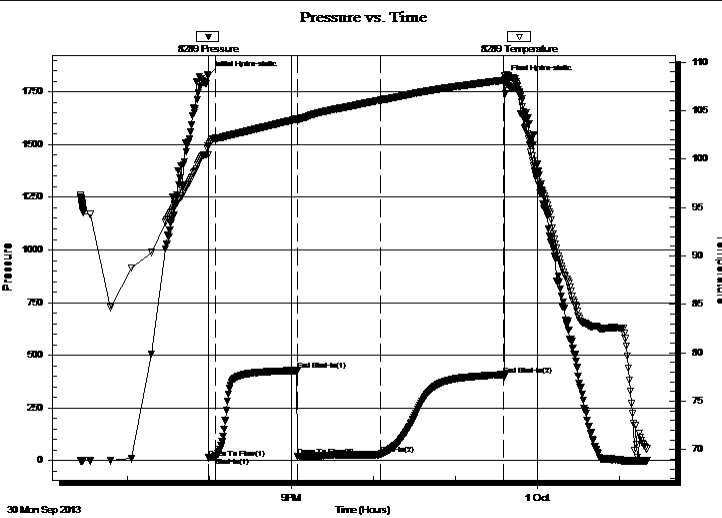
GENERAL INFORMATION:

Formation: **LKC "E"**
 Deviated: No Whipstock: 2327.00 ft (KB)
 Time Tool Opened: 19:59:30
 Time Test Ended: 01:20:00
 Interval: **3720.00 ft (KB) To 3733.00 ft (KB) (TVD)**
 Total Depth: 3733.00 ft (KB) (TVD)
 Hole Diameter: 7.88 inches Hole Condition: Fair
 Test Type: Conventional Bottom Hole (Reset)
 Tester: Jim Svaty
 Unit No: 54
 Reference Elevations: 2327.00 ft (KB)
 2322.00 ft (CF)
 KB to GR/CF: 5.00 ft

Serial #: 8289 Outside

Press @ Run Depth: 27.96 psig @ 3721.00 ft (KB) Capacity: 8000.00 psig
 Start Date: 2013.09.30 End Date: 2013.10.01 Last Calib.: 2013.10.01
 Start Time: 18:26:02 End Time: 01:20:15 Time On Btm: 2013.09.30 @ 19:59:15
 Time Off Btm: 2013.09.30 @ 23:36:00

TEST COMMENT: 5-IFP- Surface Blow
 60-ISIP- No Blow
 60-FFP- Surface Blow Building to 4 1/2"
 90-FSIP- No Blow



PRESSURE SUMMARY

Time (Min.)	Pressure (psig)	Temp (deg F)	Annotation
0	1826.69	101.39	Initial Hydro-static
1	12.26	100.45	Open To Flow (1)
6	16.86	102.14	Shut-In(1)
66	427.14	104.13	End Shut-In(1)
66	20.79	103.91	Open To Flow (2)
126	27.96	106.06	Shut-In(2)
217	407.36	108.12	End Shut-In(2)
217	1809.20	108.63	Final Hydro-static

Recovery

Length (ft)	Description	Volume (bbl)
30.00	MCO 20%o 80% m	0.15
10.00	CO 100%	0.14
0.00	80 GIP	0.00

Gas Rates

	Choke (inches)	Pressure (psig)	Gas Rate (Mcf/d)

* Recovery from multiple tests



**TRILOBITE
TESTING, INC.**

DRILL STEM TEST REPORT

TOOL DIAGRAM

DaMar Resources Inc

22 9s 23w Graham,KS

PO Box 70
Hays KS 67601-3805

Goddard #2

Job Ticket: 52254

DST#: 2

ATTN: Randy Kilian

Test Start: 2013.09.30 @ 18:26:00

Tool Information

Drill Pipe:	Length: 3677.00 ft	Diameter: 3.80 inches	Volume: 51.58 bbl	Tool Weight: 2500.00 lb
Heavy Wt. Pipe:	Length: 0.00 ft	Diameter: 2.75 inches	Volume: 0.00 bbl	Weight set on Packer: 25000.00 lb
Drill Collar:	Length: 30.00 ft	Diameter: 2.25 inches	Volume: 0.15 bbl	Weight to Pull Loose: 54000.00 lb
			<u>Total Volume: 51.73 bbl</u>	Tool Chased 0.00 ft
Drill Pipe Above KB:	10.00 ft			String Weight: Initial 50000.00 lb
Depth to Top Packer:	3720.00 ft			Final 50000.00 lb
Depth to Bottom Packer:	ft			
Interval between Packers:	13.00 ft			
Tool Length:	36.00 ft			
Number of Packers:	2	Diameter: 6.75 inches		

Tool Comments:

Tool Description

Tool Description	Length (ft)	Serial No.	Position	Depth (ft)	Accum. Lengths
Change Over Sub	1.00			3698.00	
Shut In Tool	5.00			3703.00	
Hydraulic tool	5.00			3708.00	
Safety Joint	2.00			3710.00	
Packer	5.00			3715.00	23.00 Bottom Of Top Packer
Packer	5.00			3720.00	
Stubb	1.00			3721.00	
Recorder	0.00	8789	Inside	3721.00	
Recorder	0.00	8289	Outside	3721.00	
Perforations	9.00			3730.00	
Bullnose	3.00			3733.00	13.00 Bottom Packers & Anchor

Total Tool Length: 36.00



**TRILOBITE
TESTING, INC.**

DRILL STEM TEST REPORT

FLUID SUMMARY

DaMar Resources Inc

22 9s 23w Graham,KS

PO Box 70
Hays KS 67601-3805

Goddard #2

Job Ticket: 52254

DST#: 2

ATTN: Randy Kilian

Test Start: 2013.09.30 @ 18:26:00

Mud and Cushion Information

Mud Type: Gel Chem

Cushion Type:

Oil API:

29 deg API

Mud Weight: 9.00 lb/gal

Cushion Length:

ft

Water Salinity:

ppm

Viscosity: 52.00 sec/qt

Cushion Volume:

bbbl

Water Loss: 7.17 in³

Gas Cushion Type:

Resistivity: ohm.m

Gas Cushion Pressure:

psig

Salinity: 500.00 ppm

Filter Cake: 2.00 inches

Recovery Information

Recovery Table

Length ft	Description	Volume bbbl
30.00	MCO 20%o 80%m	0.148
10.00	CO 100%	0.140
0.00	80 GIP	0.000

Total Length: 40.00 ft Total Volume: 0.288 bbl

Num Fluid Samples: 0

Num Gas Bombs: 0

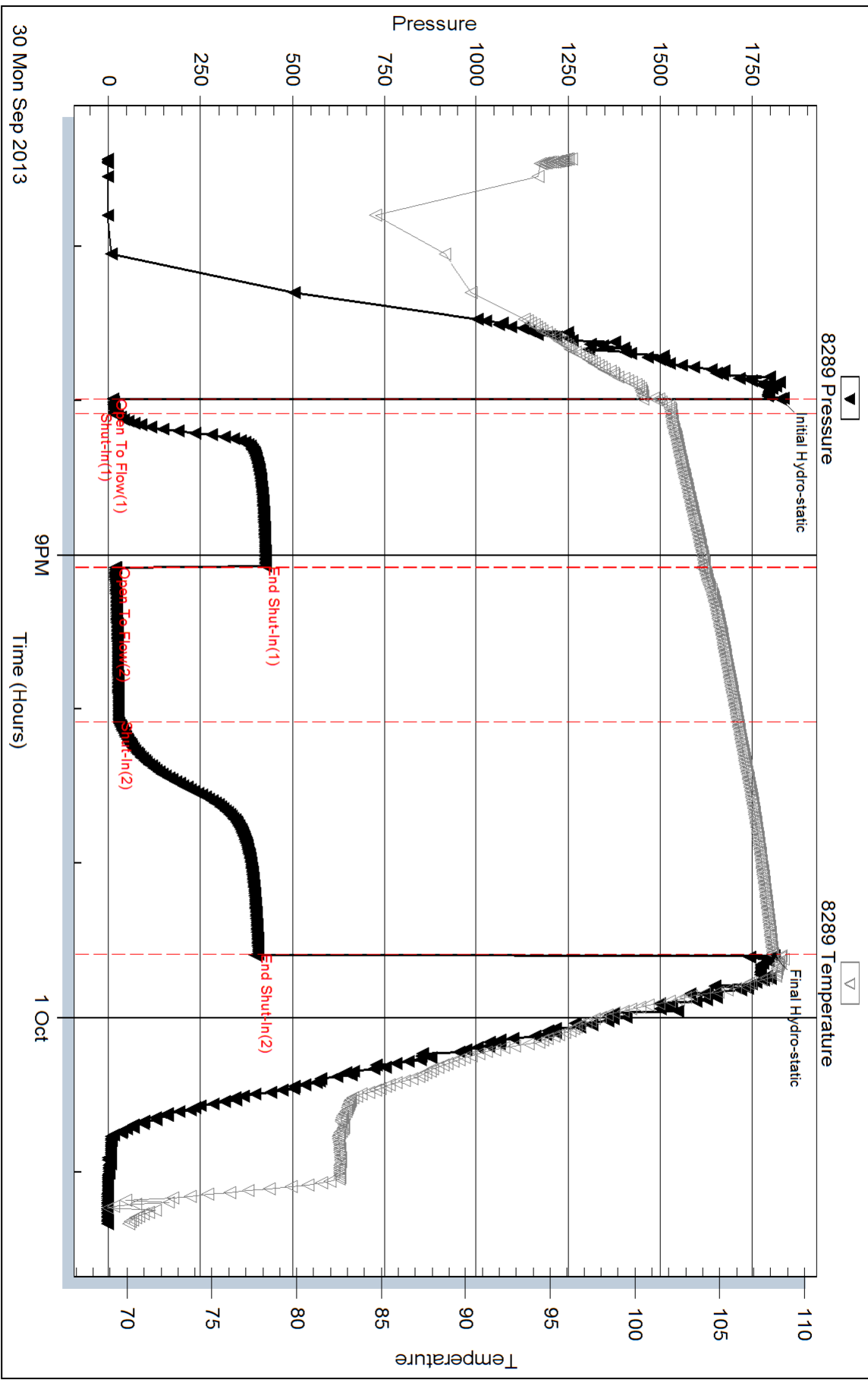
Serial #:

Laboratory Name:

Laboratory Location:

Recovery Comments:

Pressure vs. Time





DRILL STEM TEST REPORT

Prepared For: **DaMar Resources Inc**

PO Box 70
Hays KS 67601-3805

ATTN: Randy Kilian

Goddard #2

22 9s 23w Graham,KS

Start Date: 2013.10.01 @ 19:27:00

End Date: 2013.10.02 @ 02:35:00

Job Ticket #: 52255 DST #: 3

Trilobite Testing, Inc

PO Box 362 Hays, KS 67601

ph: 785-625-4778 fax: 785-625-5620

Printed: 2013.10.03 @ 13:14:16



TRILOBITE TESTING, INC.

DRILL STEM TEST REPORT

DaMar Resources Inc
 PO Box 70
 Hays KS 67601-3805
 ATTN: Randy Kilian

22 9s 23w Graham, KS

Goddard #2

Job Ticket: 52255

DST#: 3

Test Start: 2013.10.01 @ 19:27:00

GENERAL INFORMATION:

Formation: **LKC " E-F "**

Deviated: No Whipstock: 2327.00 ft (KB)

Time Tool Opened: 21:03:30

Time Test Ended: 02:35:00

Test Type: Conventional Straddle (Reset)

Tester: Jim Svaty

Unit No: 54

Interval: 3710.00 ft (KB) To 3760.00 ft (KB) (TVD)

Total Depth: 3897.00 ft (KB) (TVD)

Hole Diameter: 7.88 inches Hole Condition: Fair

Reference Elevations: 2327.00 ft (KB)

2322.00 ft (CF)

KB to GR/CF: 5.00 ft

Serial #: 8289 Outside

Press @ Run Depth: 50.78 psig @ 3718.00 ft (KB)

Start Date: 2013.10.01

End Date:

2013.10.02

Start Time: 19:27:02

End Time:

02:34:30

Capacity: 8000.00 psig

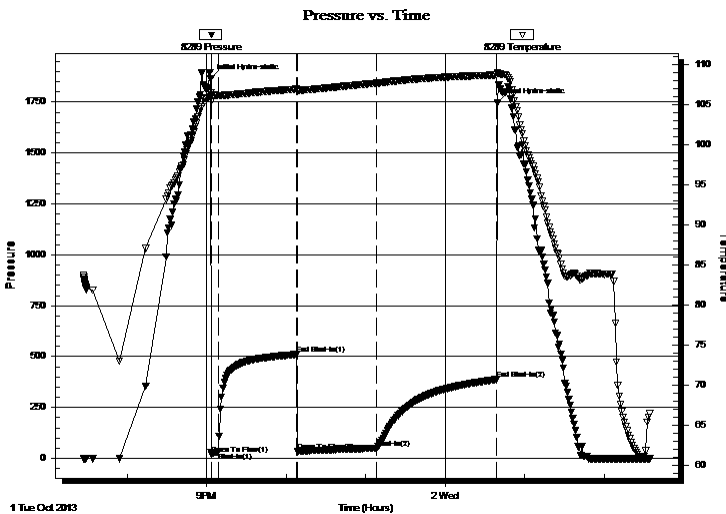
Last Calib.: 2013.10.02

Time On Btm: 2013.10.01 @ 21:03:00

Time Off Btm: 2013.10.02 @ 00:39:15

TEST COMMENT: 5-IFP- Surface Blow Building to 1 1/4"
 60-ISIP- No Blow
 60-FFP- Surface Blow Building to 1"
 90-FSIP- No Blow

PRESSURE SUMMARY



Time (Min.)	Pressure (psig)	Temp (deg F)	Annotation
0	1863.89	106.57	Initial Hydro-static
1	20.49	106.20	Open To Flow (1)
6	32.53	106.14	Shut-In(1)
65	510.12	106.98	End Shut-In(1)
66	35.10	106.78	Open To Flow (2)
126	50.78	107.72	Shut-In(2)
216	387.32	108.75	End Shut-In(2)
217	1744.71	109.07	Final Hydro-static

Recovery

Length (ft)	Description	Volume (bbl)
67.00	OWCM 10%o 10%w 80%m	0.67
3.00	CO 100%	0.04

* Recovery from multiple tests

Gas Rates

Choke (inches)	Pressure (psig)	Gas Rate (Mcf/d)



TRILOBITE TESTING, INC.

DRILL STEM TEST REPORT

DaMar Resources Inc
 PO Box 70
 Hays KS 67601-3805
 ATTN: Randy Kilian

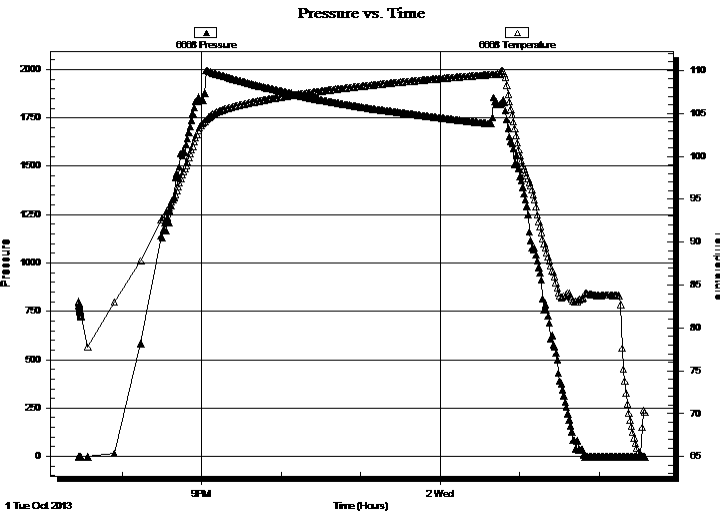
22 9s 23w Graham, KS
Goddard #2
 Job Ticket: 52255 **DST#: 3**
 Test Start: 2013.10.01 @ 19:27:00

GENERAL INFORMATION:

Formation: **LKC " E-F "**
 Deviated: No Whipstock: 2327.00 ft (KB)
 Time Tool Opened: 21:03:30
 Time Test Ended: 02:35:00
Interval: 3710.00 ft (KB) To 3760.00 ft (KB) (TVD)
 Total Depth: 3897.00 ft (KB) (TVD)
 Hole Diameter: 7.88 inches Hole Condition: Fair
 Test Type: Conventional Straddle (Reset)
 Tester: Jim Svaty
 Unit No: 54
 Reference Elevations: 2327.00 ft (KB)
 2322.00 ft (CF)
 KB to GR/CF: 5.00 ft

Serial #: 6668 Below (Straddle)
 Press @ RunDepth: psig @ 3765.00 ft (KB) Capacity: 8000.00 psig
 Start Date: 2013.10.01 End Date: 2013.10.02 Last Calib.: 2013.10.02
 Start Time: 19:27:02 End Time: 02:34:15 Time On Btm:
 Time Off Btm:

TEST COMMENT: 5-IFP- Surface Blow Building to 1 1/4"
 60-ISIP- No Blow
 60-FFP- Surface Blow Building to 1"
 90-FSIP- No Blow



PRESSURE SUMMARY

Time (Min.)	Pressure (psig)	Temp (deg F)	Annotation

Recovery

Length (ft)	Description	Volume (bbl)
67.00	OWCM 10%o 10%w 80%m	0.67
3.00	CO 100%	0.04

* Recovery from multiple tests

Gas Rates

Choke (inches)	Pressure (psig)	Gas Rate (Mcf/d)



**TRILOBITE
TESTING, INC.**

DRILL STEM TEST REPORT

TOOL DIAGRAM

DaMar Resources Inc
 PO Box 70
 Hays KS 67601-3805
 ATTN: Randy Kilian

22 9s 23w Graham,KS
Goddard #2
 Job Ticket: 52255 **DST#: 3**
 Test Start: 2013.10.01 @ 19:27:00

Tool Information

Drill Pipe:	Length: 3674.00 ft	Diameter: 3.80 inches	Volume: 51.54 bbl	Tool Weight: 2500.00 lb
Heavy Wt. Pipe:	Length: 0.00 ft	Diameter: 2.75 inches	Volume: 0.00 bbl	Weight set on Packer: 25000.00 lb
Drill Collar:	Length: 30.00 ft	Diameter: 2.25 inches	Volume: 0.15 bbl	Weight to Pull Loose: 50000.00 lb
			<u>Total Volume: 51.69 bbl</u>	Tool Chased 0.00 ft
Drill Pipe Above KB:	17.00 ft			String Weight: Initial 48000.00 lb
Depth to Top Packer:	3710.00 ft			Final 48000.00 lb
Depth to Bottom Packer:	3760.00 ft			
Interval between Packers:	50.00 ft			
Tool Length:	209.00 ft			
Number of Packers:	2	Diameter: 6.75 inches		

Tool Comments:

Tool Description	Length (ft)	Serial No.	Position	Depth (ft)	Accum. Lengths
-------------------------	--------------------	-------------------	-----------------	-------------------	-----------------------

Change Over Sub	1.00			3688.00	
Shut In Tool	5.00			3693.00	
Hydraulic tool	5.00			3698.00	
Safety Joint	2.00			3700.00	
Packer	5.00			3705.00	23.00 Bottom Of Top Packer
Packer	5.00			3710.00	
Stubb	1.00			3711.00	
Perforations	7.00			3718.00	
Recorder	0.00	8789	Inside	3718.00	
Recorder	0.00	8289	Outside	3718.00	
Change Over Sub	1.00			3719.00	
Blank Spacing	31.00			3750.00	
Change Over Sub	1.00			3751.00	
Perforations	5.00			3756.00	
Blank Off Sub	1.00			3757.00	
Blank Spacing	3.00			3760.00	50.00 Tool Interval
Packer	1.00			3761.00	
Perforations	3.00			3764.00	
Change Over Sub	1.00			3765.00	
Recorder	0.00	6668	Below	3765.00	
Blank Spacing	127.00			3892.00	
Change Over Sub	1.00			3893.00	
Bullnose	3.00			3896.00	136.00 Bottom Packers & Anchor
Total Tool Length:	209.00				



**TRILOBITE
TESTING, INC.**

DRILL STEM TEST REPORT

FLUID SUMMARY

DaMar Resources Inc
PO Box 70
Hays KS 67601-3805
ATTN: Randy Kilian

22 9s 23w Graham,KS
Goddard #2
Job Ticket: 52255 **DST#: 3**
Test Start: 2013.10.01 @ 19:27:00

Mud and Cushion Information

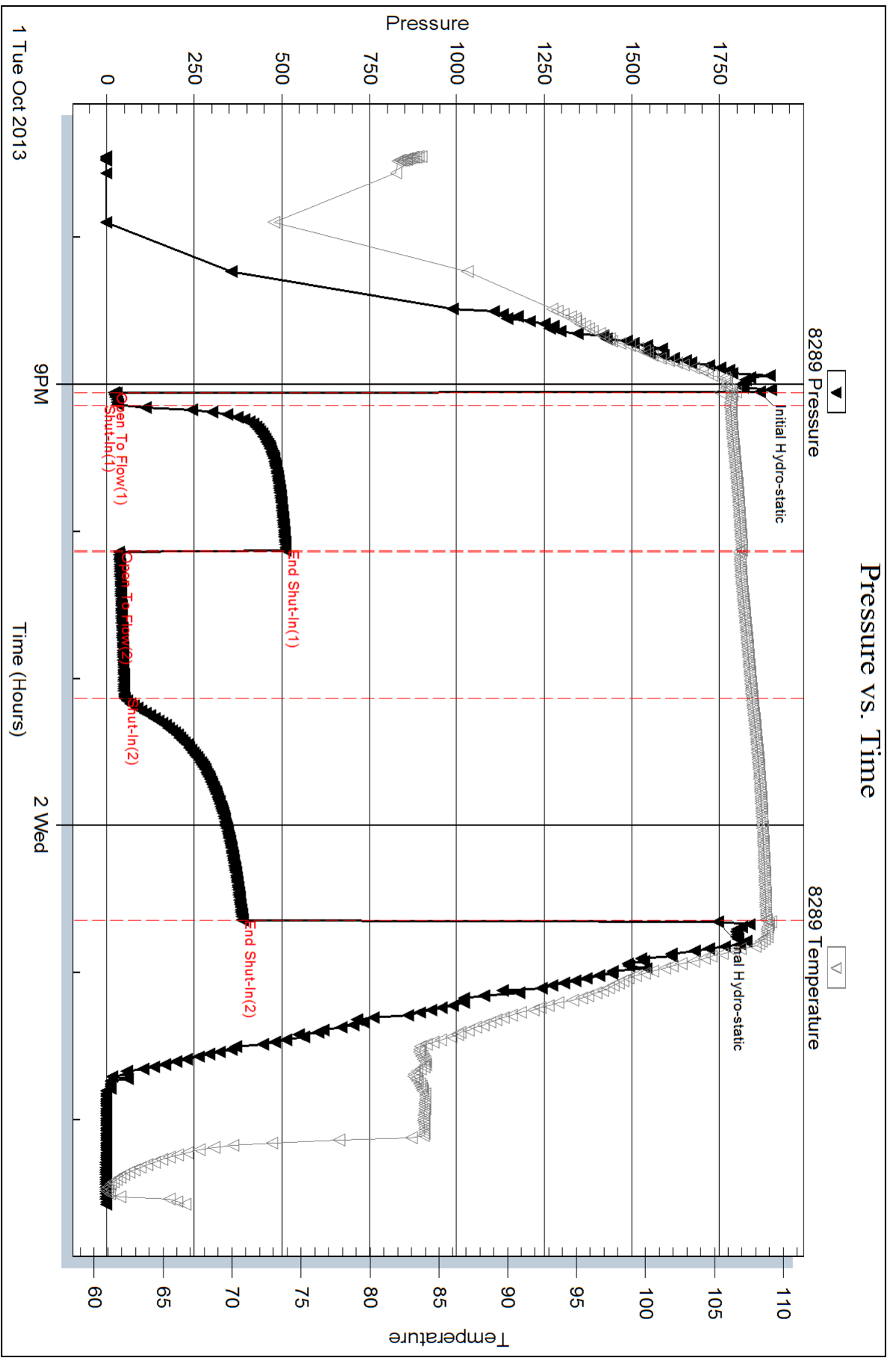
Mud Type: Gel Chem	Cushion Type:	Oil API: 29 deg API
Mud Weight: 9.00 lb/gal	Cushion Length: ft	Water Salinity: ppm
Viscosity: 55.00 sec/qt	Cushion Volume: bbl	
Water Loss: 7.97 in ³	Gas Cushion Type:	
Resistivity: ohm.m	Gas Cushion Pressure: psig	
Salinity: 500.00 ppm		
Filter Cake: 1.50 inches		

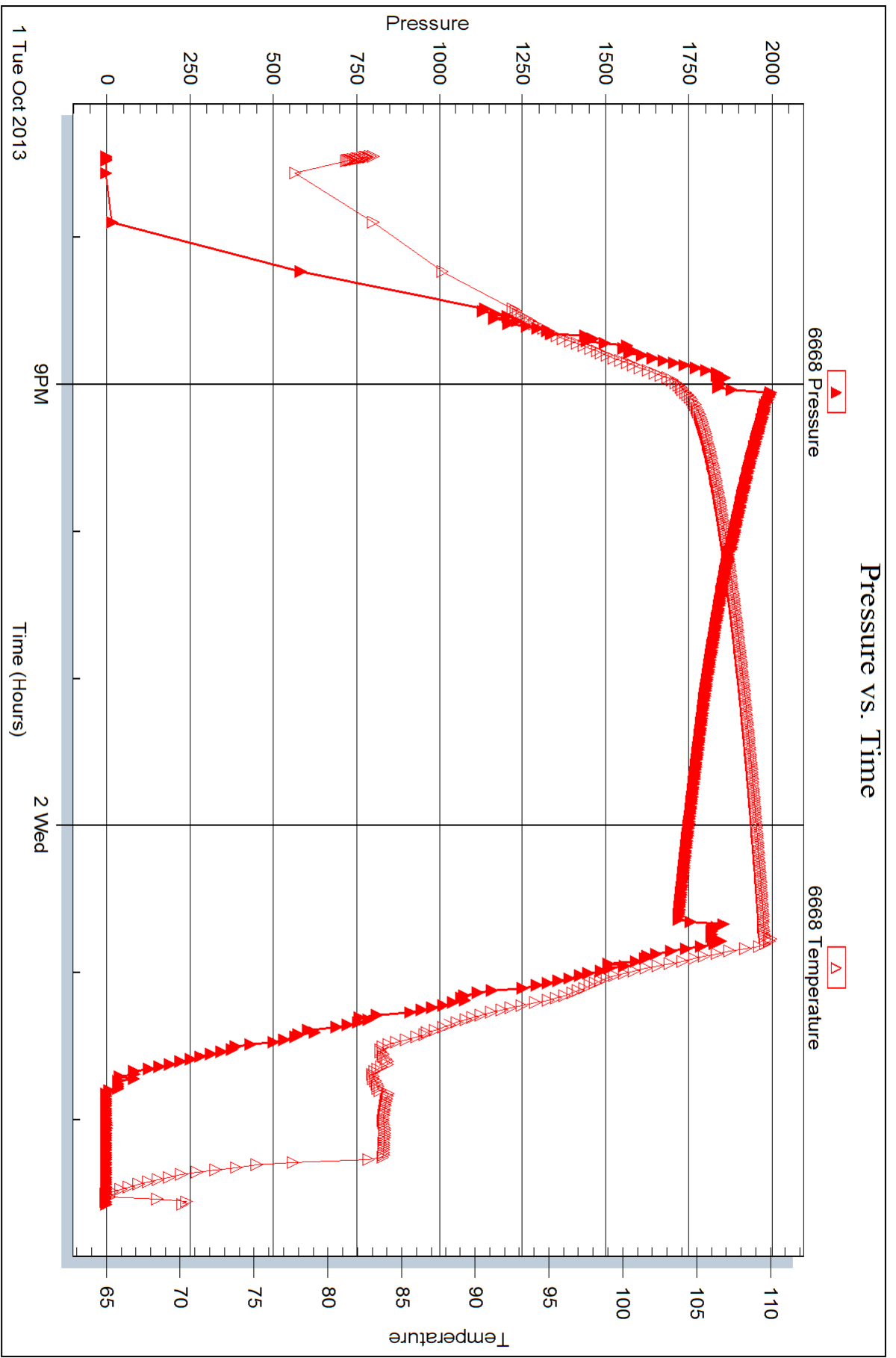
Recovery Information

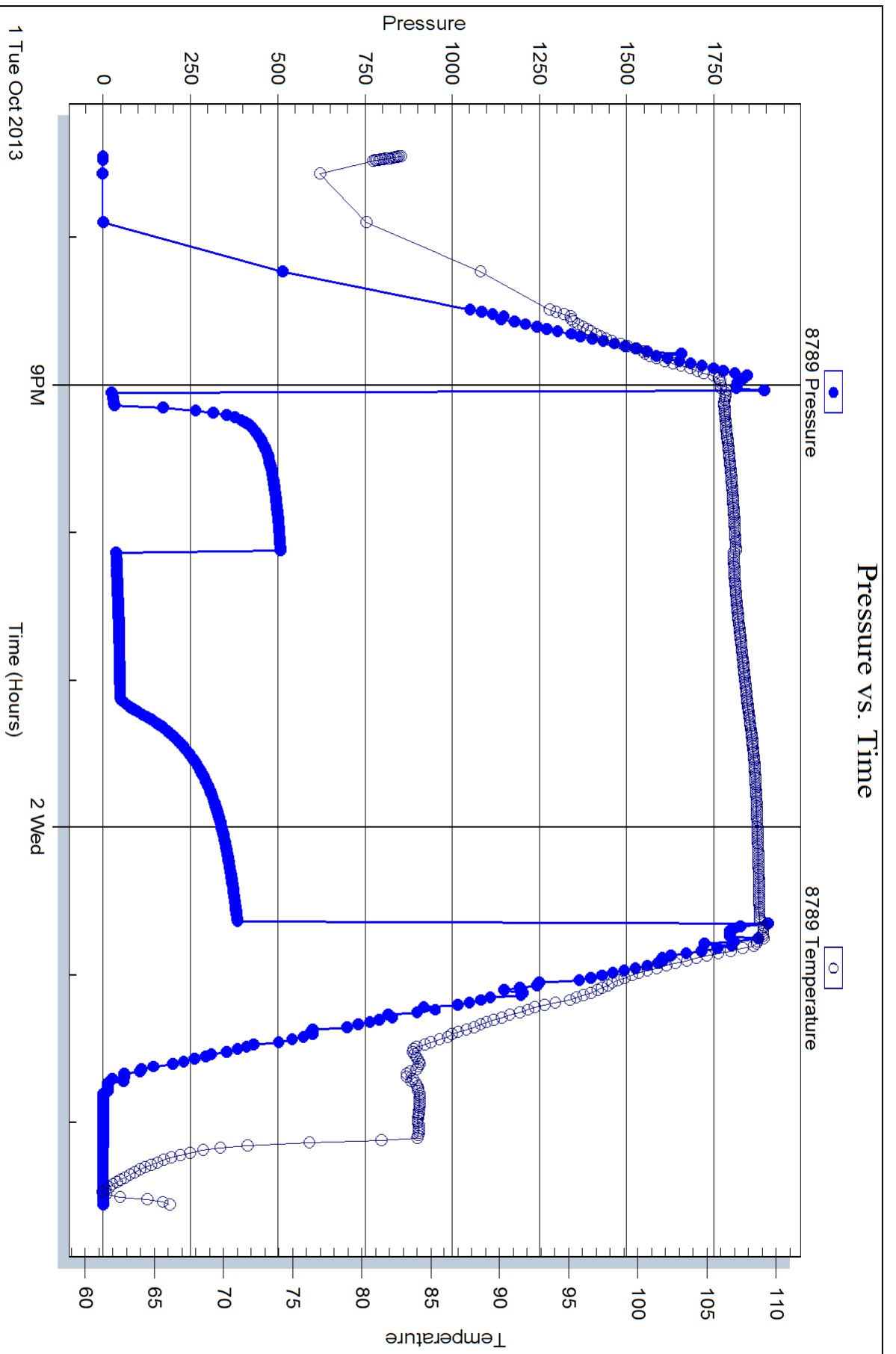
Recovery Table

Length ft	Description	Volume bbl
67.00	OWCM 10%o 10%w 80%m	0.667
3.00	CO 100%	0.042

Total Length: 70.00 ft Total Volume: 0.709 bbl
Num Fluid Samples: 0 Num Gas Bombs: 0 Serial #:
Laboratory Name: Laboratory Location:
Recovery Comments:









DRILL STEM TEST REPORT

Prepared For: **DaMar Resources Inc**

PO Box 70
Hays KS 67601-3805

ATTN: Randy Kilian

Goddard #2

22 9s 23w Graham,KS

Start Date: 2013.10.02 @ 03:05:00

End Date: 2013.10.02 @ 08:54:00

Job Ticket #: 52256 DST #: 4

Trilobite Testing, Inc

PO Box 362 Hays, KS 67601

ph: 785-625-4778 fax: 785-625-5620

Printed: 2013.10.03 @ 13:13:40



**TRILOBITE
TESTING, INC.**

DRILL STEM TEST REPORT

DaMar Resources Inc
PO Box 70
Hays KS 67601-3805
ATTN: Randy Kilian

22 9s 23w Graham, KS

Goddard #2

Job Ticket: 52256

DST#: 4

Test Start: 2013.10.02 @ 03:05:00

GENERAL INFORMATION:

Formation: **LKC " K "**

Deviated: No Whipstock: 2327.00 ft (KB)

Time Tool Opened: 04:56:30

Time Test Ended: 08:54:00

Test Type: Conventional Bottom Hole (Reset)

Tester: Jim Svaty

Unit No: 54

Interval: 3830.00 ft (KB) To 3897.00 ft (KB) (TVD)

Total Depth: 3897.00 ft (KB) (TVD)

Hole Diameter: 7.88 inches Hole Condition: Fair

Reference Elevations: 2327.00 ft (KB)

2322.00 ft (CF)

KB to GR/CF: 5.00 ft

Serial #: 8289 Outside

Press @ RunDepth: 25.83 psig @ 3831.00 ft (KB)

Start Date: 2013.10.02

End Date:

2013.10.02

Start Time: 03:05:02

End Time:

08:54:00

Capacity: 8000.00 psig

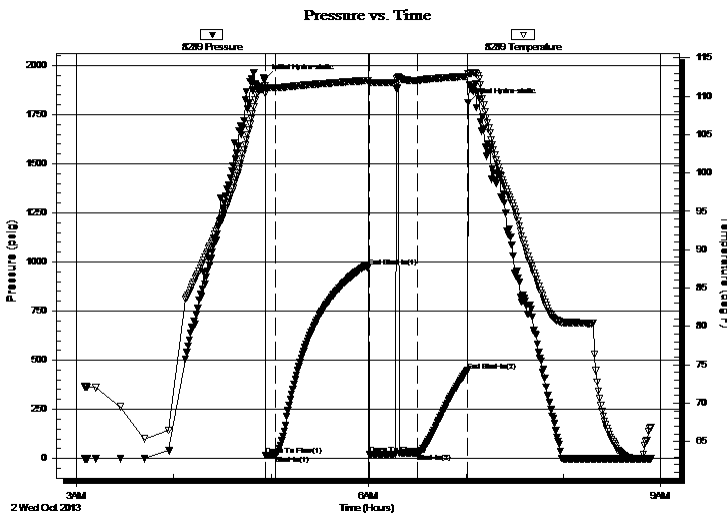
Last Calib.: 2013.10.02

Time On Btm: 2013.10.02 @ 04:56:15

Time Off Btm: 2013.10.02 @ 07:01:15

TEST COMMENT: 5-IFP- Surface Blow
60-ISIP- No Blow
30-FFP- No Blow - Flushed - No Blow
30-FSIP- No Blow

PRESSURE SUMMARY



Time (Min.)	Pressure (psig)	Temp (deg F)	Annotation
0	1933.72	111.38	Initial Hydro-static
1	15.21	110.33	Open To Flow (1)
7	17.43	111.10	Shut-In(1)
64	976.70	112.06	End Shut-In(1)
65	19.12	111.73	Open To Flow (2)
94	25.83	112.06	Shut-In(2)
125	446.70	112.60	End Shut-In(2)
125	1811.12	112.93	Final Hydro-static

Recovery

Length (ft)	Description	Volume (bbl)
5.00	Mud 100% Show of Oil in Tool	0.02

Gas Rates

	Choke (inches)	Pressure (psig)	Gas Rate (Mcf/d)

* Recovery from multiple tests



**TRILOBITE
TESTING, INC.**

DRILL STEM TEST REPORT

TOOL DIAGRAM

DaMar Resources Inc

22 9s 23w Graham,KS

PO Box 70
Hays KS 67601-3805

Goddard #2

Job Ticket: 52256

DST#: 4

ATTN: Randy Kilian

Test Start: 2013.10.02 @ 03:05:00

Tool Information

Drill Pipe:	Length: 3800.00 ft	Diameter: 3.80 inches	Volume: 53.30 bbl	Tool Weight: 2500.00 lb
Heavy Wt. Pipe:	Length: 0.00 ft	Diameter: 2.75 inches	Volume: 0.00 bbl	Weight set on Packer: 25000.00 lb
Drill Collar:	Length: 30.00 ft	Diameter: 2.25 inches	Volume: 0.15 bbl	Weight to Pull Loose: 50000.00 lb
			<u>Total Volume: 53.45 bbl</u>	Tool Chased 0.00 ft
Drill Pipe Above KB:	23.00 ft			String Weight: Initial 48000.00 lb
Depth to Top Packer:	3830.00 ft			Final 48000.00 lb
Depth to Bottom Packer:	ft			
Interval between Packers:	67.00 ft			
Tool Length:	90.00 ft			
Number of Packers:	2	Diameter: 6.75 inches		

Tool Comments:

Tool Description

Tool Description	Length (ft)	Serial No.	Position	Depth (ft)	Accum. Lengths
Change Over Sub	1.00			3808.00	
Shut In Tool	5.00			3813.00	
Hydraulic tool	5.00			3818.00	
Safety Joint	2.00			3820.00	
Packer	5.00			3825.00	23.00 Bottom Of Top Packer
Packer	5.00			3830.00	
Stubb	1.00			3831.00	
Recorder	0.00	8789	Inside	3831.00	
Recorder	0.00	8289	Outside	3831.00	
Perforations	29.00			3860.00	
Change Over Sub	1.00			3861.00	
Blank Spacing	32.00			3893.00	
Change Over Sub	1.00			3894.00	
Bullnose	3.00			3897.00	67.00 Bottom Packers & Anchor

Total Tool Length: 90.00



**TRILOBITE
TESTING, INC.**

DRILL STEM TEST REPORT

FLUID SUMMARY

DaMar Resources Inc

22 9s 23w Graham,KS

PO Box 70
Hays KS 67601-3805

Goddard #2

Job Ticket: 52256

DST#: 4

ATTN: Randy Kilian

Test Start: 2013.10.02 @ 03:05:00

Mud and Cushion Information

Mud Type: Gel Chem

Cushion Type:

Oil API:

deg API

Mud Weight: 9.00 lb/gal

Cushion Length:

ft

Water Salinity:

ppm

Viscosity: 55.00 sec/qt

Cushion Volume:

bbbl

Water Loss: 7.96 in³

Gas Cushion Type:

Resistivity: ohm.m

Gas Cushion Pressure:

psig

Salinity: 500.00 ppm

Filter Cake: 1.50 inches

Recovery Information

Recovery Table

Length ft	Description	Volume bbl
5.00	Mud 100% Show of Oil in Tool	0.025

Total Length: 5.00 ft Total Volume: 0.025 bbl

Num Fluid Samples: 0

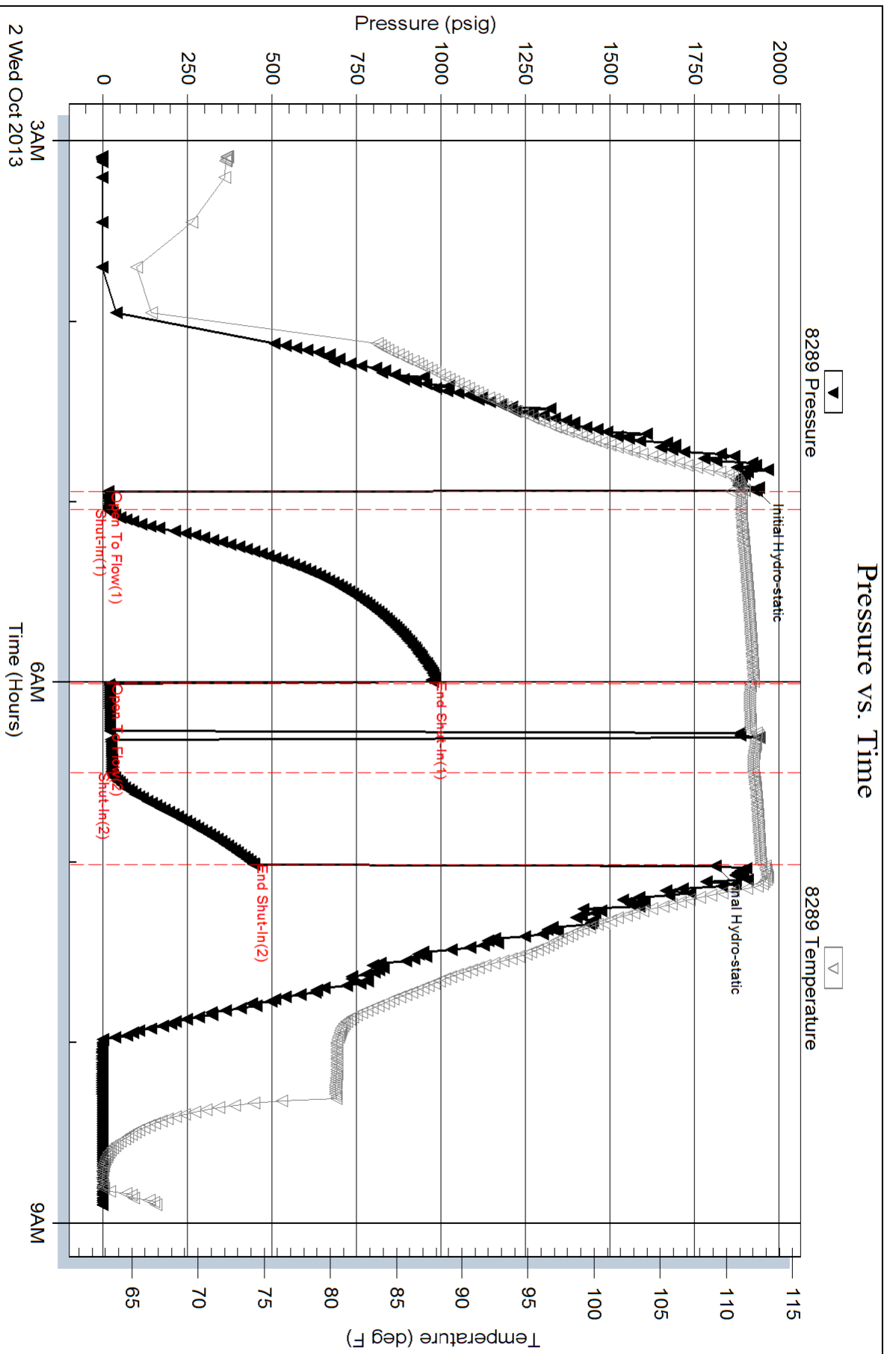
Num Gas Bombs: 0

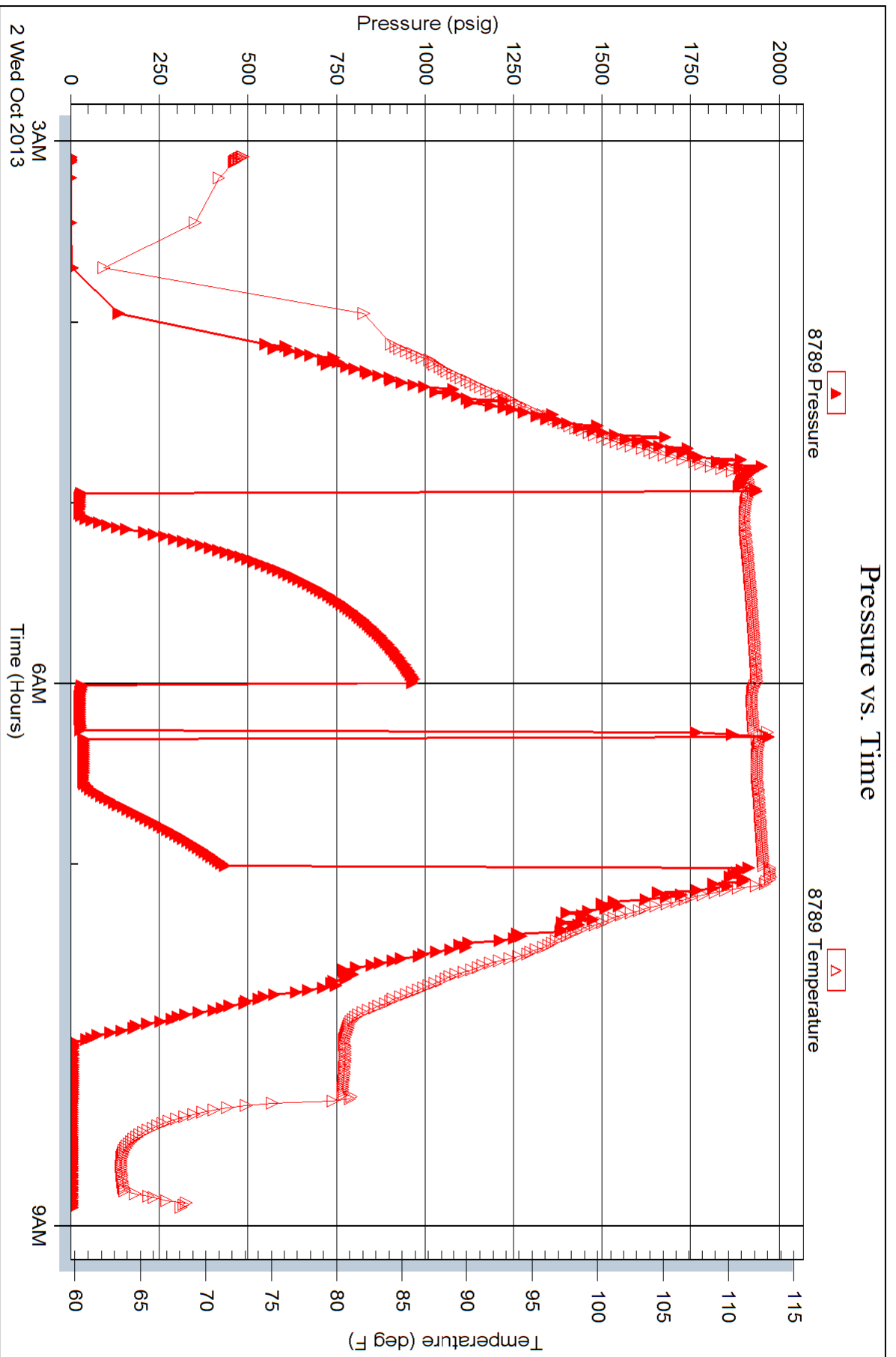
Serial #:

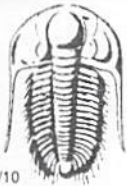
Laboratory Name:

Laboratory Location:

Recovery Comments:







TRILOBITE TESTING INC.

1515 Commerce Parkway • Hays, Kansas 67601

Test Ticket

NO. 52253

Well Name & No. Doddard #2 Test No. 1 Date 9-30-13
 Company DAMAR Resources, Inc. Elevation 2327 KB 2322 GL
 Address 234 W. 11th St Site A. P.O. Box 70 Hays KS. 67601-3805
 Co. Rep / Geo. Randy Kilian Rig Murphy #16
 Location: Sec. 22 Twp. 9S Rge. 23W Co. Graham State KS

Interval Tested 3680-3696 Zone Tested LRC "C"
 Anchor Length 16 Drill Pipe Run 3647 Mud Wt. 8.6
 Top Packer Depth 3675 Drill Collars Run 30 Vis 65
 Bottom Packer Depth 3680 Wt. Pipe Run 0 WL 7.2
 Total Depth 3696 Chlorides 400 ppm System LCM 2

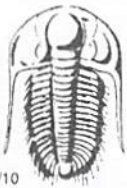
Blow Description IFP - Surface Blow Building to 1 in.
ISIP - ~~no blow~~ Weak Surface Blow
FFP - Surface Blow Building to 8 in.
FSIP - No Blow

Rec	Feet of	%gas	%oil	%water	%mud
<u>110</u>	<u>MCW</u>			<u>95</u>	<u>5</u>
	<u>Show of Oil in Tool</u>				
	<u>10 DIP</u>				

Rec Total 110 BHT 113 Gravity _____ API RW 125 @ 72 °F Chlorides 65000 ppm

(A) Initial Hydrostatic <u>1817</u>	<input checked="" type="checkbox"/> Test <u>1150</u>	T-On Location <u>03:45</u>
(B) First Initial Flow <u>12</u>	<input type="checkbox"/> Jars _____	T-Started <u>03:47</u>
(C) First Final Flow <u>21</u>	<input checked="" type="checkbox"/> Safety Joint <u>75</u>	T-Open <u>06:30</u>
(D) Initial Shut-In <u>460</u>	<input type="checkbox"/> Circ Sub _____	T-Pulled <u>10:05</u>
(E) Second Initial Flow <u>22</u>	<input type="checkbox"/> Hourly Standby _____	T-Out <u>11:55</u>
(F) Second Final Flow <u>64</u>	<input checked="" type="checkbox"/> Mileage <u>105 RT</u> 162.75	Comments _____
(G) Final Shut-In <u>439</u>	<input type="checkbox"/> Sampler _____	
(H) Final Hydrostatic <u>1716</u>	<input type="checkbox"/> Straddle _____	<input type="checkbox"/> Ruined Shale Packer _____
	<input type="checkbox"/> Shale Packer _____	<input type="checkbox"/> Ruined Packer _____
Initial Open <u>5</u>	<input type="checkbox"/> Extra Packer _____	<input type="checkbox"/> Extra Copies _____
Initial Shut-In <u>60</u>	<input type="checkbox"/> Extra Recorder _____	Sub Total <u>0</u>
Final Flow <u>60</u>	<input type="checkbox"/> Day Standby _____	Total <u>1387.75</u>
Final Shut-In <u>90</u>	<input type="checkbox"/> Accessibility _____	MP/DST Disc't _____
	Sub Total <u>1387.75</u>	

Approved By _____ Our Representative [Signature]
 Trilobite Testing Inc. shall not be liable for damaged of any kind of the property or personnel of the one for whom a test is made, or for any loss suffered or sustained, directly or indirectly, through the use of its equipment, or its statements or opinion concerning the results of any test, tools lost or damaged in the hole shall be paid for at cost by the party for whom the test is made.



TRILOBITE TESTING INC.

1515 Commerce Parkway • Hays, Kansas 67601

Test Ticket

NO. 52254

Well Name & No. Haddock #2 Test No. 2 Date 9-30-13
 Company Damar Resources Inc. Elevation 2327 KB 2322 GL
 Address 234 W. 11th St. Ste A. P.O. Box 70 Hays KS 67601-3805
 Co. Rep / Geo. Randy Kilian Rig J. Murfin 16
 Location: Sec. 220 Twp. 9S Rge. 23W Co. Graham State KS

Interval Tested 3720-3733 Zone Tested LKC "E"
 Anchor Length 13 Drill Pipe Run 3677 Mud Wt. 9.1
 Top Packer Depth 3715 Drill Collars Run 30 Vis 52
 Bottom Packer Depth 3720 Wt. Pipe Run 0 WL 7.2
 Total Depth 3733 Chlorides 500 ppm System LCM 2

Blow Description IFP - Surface Blow
ISIP - No Blow
FFP - Surface Blow Building to 4 1/2 in.
FSIP - No Blow

Rec	Feet of	%gas	%oil	%water	%mud
<u>30</u>	<u>OCM</u>	<u>20</u>		<u>80</u>	
<u>10</u>	<u>CO</u>	<u>100</u>			
	<u>80 NIP</u>				

Rec Total 40 BHT 1826 Gravity 29 API RW @ °F Chlorides ppm
 (A) Initial Hydrostatic 1826 Test 1150 T-On Location 18:26
 (B) First Initial Flow 12 Jars T-Started 18:26
 (C) First Final Flow 16 Safety Joint 75 T-Open 20:00
 (D) Initial Shut-In 427 Circ Sub T-Pulled 23:35
 (E) Second Initial Flow 20 Hourly Standby T-Out 01:20
 (F) Second Final Flow 27 Mileage 162.75 Comments
 (G) Final Shut-In 407 Sampler
 (H) Final Hydrostatic 1809 Straddle Ruined Shale Packer
 Shale Packer Ruined Packer
 Extra Packer Extra Copies
 Initial Open 5 Extra Recorder Sub Total 0
 Initial Shut-In 60 Day Standby Total 1387.75
 Final Flow 60 Accessibility MP/DST Disc't
 Final Shut-In 90 Sub Total 1387.75

Approved By _____ Our Representative [Signature]
 Trilobite Testing Inc. shall not be liable for damaged of any kind of the property or personnel of the one for whom a test is made, or for any loss suffered or sustained, directly or indirectly, through the use of its equipment, or its statements or opinion concerning the results of any test, tools lost or damaged in the hole shall be paid for at cost by the party for whom the test is made.



TRILOBITE TESTING INC.

1515 Commerce Parkway • Hays, Kansas 67601

Test Ticket

NO. 52255

Well Name & No. Loddard #2 Test No. 3 Date 10-1-13
 Company DAMAR Resources Inc. Elevation 2327 KB 2322 GL
 Address 234 W. 11th St Ste A P.O. Box 70 Hays KS 67601-3805
 Co. Rep / Geo. Randy Nilian Rig Murfin 16
 Location: Sec. 22 Twp. 9S Rge. 23W Co. Graham State K5

Interval Tested 3710-3760 Zone Tested LKC "E & E"
 Anchor Length 50 (137TP) Drill Pipe Run 3674 Mud Wt. 9.3
 Top Packer Depth 3710 Drill Collars Run 30 Vis 55
 Bottom Packer Depth 3760 Wt. Pipe Run 0 WL 8.0
 Total Depth 3897 Chlorides 500 ppm System LCM 1.5

Blow Description IFP - Surface Blow Building To 1/4 in.
ISIP - No Blow
FFP - Surface Blow Building To 1 in.
FSIP - No Blow

Rec	Feet of	%gas	%oil	%water	%mud
<u>67</u>	<u>OWCm</u>	<u>10</u>	<u>10</u>	<u>80</u>	
<u>3</u>	<u>CO</u>	<u>100</u>			

Rec Total 70 BHT 109 Gravity 29 API RW @ ° F Chlorides ppm
 (A) Initial Hydrostatic 1863 Test 1150 T-On Location 17:20
 (B) First Initial Flow 20 Jars _____ T-Started 19:27
 (C) First Final Flow 32 Safety Joint 75 T-Open 21:04
 (D) Initial Shut-In 510 Circ Sub _____ T-Pulled 00:39
 (E) Second Initial Flow 35 Hourly Standby _____ T-Out 02:35
 (F) Second Final Flow 50 Mileage 162.75 Comments _____
 (G) Final Shut-In 387 Sampler _____
 (H) Final Hydrostatic 1744 Straddle 600 Ruined Shale Packer _____
 Shale Packer _____ Ruined Packer _____
 Extra Packer _____ Extra Copies _____
 Initial Open 5 Extra Recorder _____ Sub Total 0
 Initial Shut-In 60 Day Standby _____ Total 1987.75
 Final Flow 60 Accessibility _____ MP/DST Disc't _____
 Final Shut-In 90 Sub Total 1987.75

Approved By _____ Our Representative [Signature]
 Trilobite Testing Inc. shall not be liable for damaged of any kind of the property or personnel of the one for whom a test is made, or for any loss suffered or sustained, directly or indirectly, through the use of its equipment, or its statements or opinion concerning the results of any test, tools lost or damaged in the hole shall be paid for at cost by the party for whom the test is made.



TRILOBITE TESTING INC.

1515 Commerce Parkway • Hays, Kansas 67601

Test Ticket

NO. 52256

Well Name & No. Loddard #2 Test No. 4 Date 10-2-13
 Company DAMAR Resources Inc. Elevation 2327 KB 2322 GL
 Address 234 W 11th St Ste A. P.O. Box 70 Hays KS 67601-3805
 Co. Rep / Geo. Randy Bilian Rig Murfin 16
 Location: Sec. 22 Twp. 9^s Rge. 23^w Co. Graham State KS

Interval Tested 3830-3897 Zone Tested LRC "K"
 Anchor Length 67 Drill Pipe Run 3800 Mud Wt. 9.3
 Top Packer Depth 3825 Drill Collars Run 30 Vis 55
 Bottom Packer Depth 3830 Wt. Pipe Run 0 WL 8.0
 Total Depth 3897 Chlorides 500 ppm System LCM 1.5

Blow Description IFP - Surface Blow
ISIP - No Blow
FFP - No Blow Flushed No Blow
FSIP - No Blow

Rec	Feet of	%gas	%oil	%water	%mud
<u>5</u>	<u>mud</u>			<u>100</u>	
	<u>Show of Oil</u>				

Rec Total 5 BHT 112 Gravity _____ API RW _____ @ _____ °F Chlorides _____ ppm

(A) Initial Hydrostatic 1933 Test 1150 T-On Location 03:00
 (B) First Initial Flow 15 Jars _____ T-Started 03:05
 (C) First Final Flow 17 Safety Joint 75 T-Open 04:56
 (D) Initial Shut-In 976 Circ Sub _____ T-Pulled 07:01
 (E) Second Initial Flow 19 Hourly Standby _____ T-Out 08:54
 (F) Second Final Flow 25 Mileage 162.75 Comments _____
 (G) Final Shut-In 446 Sampler _____
 (H) Final Hydrostatic 1811 Straddle _____ Ruined Shale Packer _____
 Shale Packer _____ Ruined Packer _____
 Extra Packer _____ Extra Copies _____
 Initial Open 5 Extra Recorder _____ Sub Total 0
 Initial Shut-In 60 Day Standby _____ Total 1387.75
 Final Flow 30 Accessibility _____ MP/DST Disc't _____
 Final Shut-In 30 Sub Total 1387.75

Approved By _____ Our Representative [Signature]
 Trilobite Testing Inc. shall not be liable for damaged of any kind of the property or personnel of the one for whom a test is made, or for any loss suffered or sustained, directly or indirectly, through the use of its equipment, or its statements or opinion concerning the results of any test, tools lost or damaged in the hole shall be paid for at cost by the party for whom the test is made.