



## DRILL STEM TEST REPORT

Prepared For: **Shelby Resources, LLC**

2717 Canal BLVD.  
Suite C  
Hays, Ks 67601

ATTN: Jeremy Schwartz

### **P-W Unit #1-35**

### **35/21s/16w/Pawnee**

Start Date: 2014.01.01 @ 01:50:00

End Date: 2014.01.01 @ 09:36:00

Job Ticket #: 18618                      DST #: 3

Superior Testers Enterprises LLC  
PO Box 138 Great Bend KS 67530  
1-800-792-6902

Printed: 2013.12.31 @ 05:52:16



# DRILL STEM TEST REPORT

Shelby Resources, LLC  
 2717 Canal BLVD.  
 Suite C  
 Hays, Ks 67601  
 ATTN: Jeremy Schwartz

**35/21s/16w/Pawnee**

**P-W Unit #1-35**

Job Ticket: 18618

**DST#: 3**

Test Start: 2014.01.01 @ 01:50:00

## GENERAL INFORMATION:

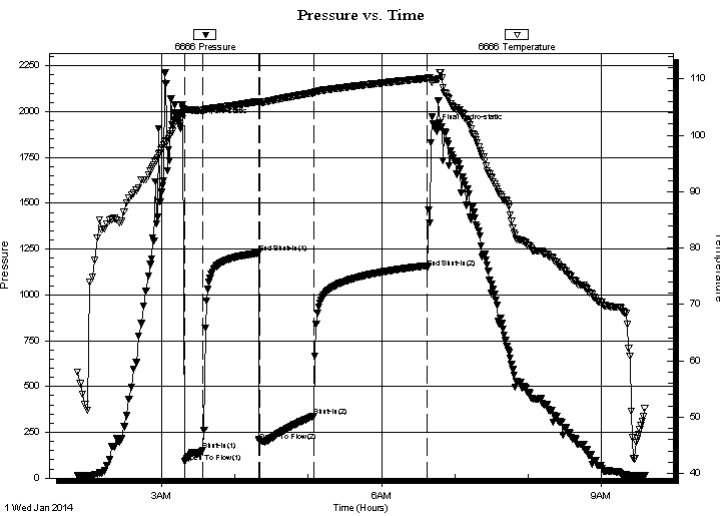
Formation: **Simpson Sand**  
 Deviated: No Whipstock: ft (KB)  
 Time Tool Opened: 03:18:30  
 Time Test Ended: 09:36:00  
 Interval: **3875.00 ft (KB) To 3915.00 ft (KB) (TVD)**  
 Total Depth: 3915.00 ft (KB) (TVD)  
 Hole Diameter: 7.88 inches Hole Condition: Fair  
 Test Type: Conventional Bottom Hole (Initial)  
 Tester: Shane Konzem  
 Unit No: 3330/60/Great Bend  
 Reference Elevations: 1991.00 ft (KB)  
 1978.00 ft (CF)  
 KB to GR/CF: 13.00 ft

## Serial #: 6666

Inside

Press @ Run Depth: 339.45 psia @ 3911.00 ft (KB) Capacity: 5000.00 psia  
 Start Date: 2014.01.01 End Date: 2014.01.01 Last Calib.: 2014.01.01  
 Start Time: 01:51:00 End Time: 09:36:00 Time On Btm: 2014.01.01 @ 03:13:30  
 Time Off Btm: 2014.01.01 @ 06:44:00

**TEST COMMENT:** 1st Open/ 15 Minutes. Strong blow built to bottom of 5 gallon bucket in 1 minute and 50 seconds.  
 1st Shut In/ 45 Minutes. Good blow back built to 11 inches in 5 gallon bucket.  
 2nd Open/ 45 Minutes. Strong blow built to bottom of 5 gallon bucket in 4 minutes.  
 2nd Shut In/ 90 Minutes. Blow back built to bottom of 5 gallon bucket. Gas to surface in 60 minutes.



## PRESSURE SUMMARY

Time (Min.)	Pressure (psia)	Temp (deg F)	Annotation
0	1936.92	103.93	Initial Hydro-static
5	88.79	104.52	Open To Flow (1)
20	151.62	104.42	Shut-In(1)
66	1227.45	106.01	End Shut-In(1)
67	199.59	105.85	Open To Flow (2)
111	339.45	107.55	Shut-In(2)
204	1148.86	110.10	End Shut-In(2)
211	1908.01	109.87	Final Hydro-static

## Recovery

Length (ft)	Description	Volume (bbl)
945.00	100% clean gassy oil	10.26
0.00	Oil gravity was 40 corrected.	0.00

## Gas Rates

Choke (inches)	Pressure (psia)	Gas Rate (Mcf/d)



# DRILL STEM TEST REPORT

Shelby Resources, LLC  
 2717 Canal BLVD.  
 Suite C  
 Hays, Ks 67601  
 ATTN: Jeremy Schwartz

**35/21s/16w/Pawnee**

**P-W Unit #1-35**

Job Ticket: 18618

**DST#: 3**

Test Start: 2014.01.01 @ 01:50:00

## GENERAL INFORMATION:

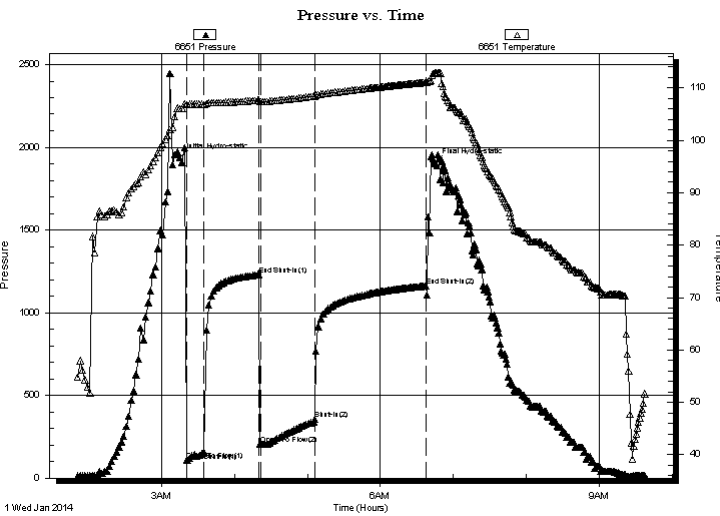
Formation: **Simpson Sand**  
 Deviated: No Whipstock: ft (KB)  
 Time Tool Opened: 03:18:30  
 Time Test Ended: 09:36:00  
 Interval: **3875.00 ft (KB) To 3915.00 ft (KB) (TVD)**  
 Total Depth: 3915.00 ft (KB) (TVD)  
 Hole Diameter: 7.88 inches Hole Condition: Fair  
 Test Type: Conventional Bottom Hole (Initial)  
 Tester: Shane Konzem  
 Unit No: 3330/60/Great Bend  
 Reference Elevations: 1991.00 ft (KB)  
 1978.00 ft (CF)  
 KB to GR/CF: 13.00 ft

## Serial #: 6651

**Outside**

Press @ RunDepth: 1162.06 psia @ 3912.00 ft (KB) Capacity: 5000.00 psia  
 Start Date: 2014.01.01 End Date: 2014.01.01 Last Calib.: 2014.01.01  
 Start Time: 01:51:00 End Time: 09:37:30 Time On Btm: 2014.01.01 @ 03:15:00  
 Time Off Btm: 2014.01.01 @ 06:45:00

**TEST COMMENT:** 1st Open/ 15 Minutes. Strong blow built to bottom of 5 gallon bucket in 1 minute and 50 seconds.  
 1st Shut In/ 45 Minutes. Good blow back built to 11 inches in 5 gallon bucket.  
 2nd Open/ 45 Minutes. Strong blow built to bottom of 5 gallon bucket in 4 minutes.  
 2nd Shut In/ 90 Minutes. Blow back built to bottom of 5 gallon bucket. Gas to surface in 60 minutes.



## PRESSURE SUMMARY

Time (Min.)	Pressure (psia)	Temp (deg F)	Annotation
0	1935.02	106.09	Initial Hydro-static
6	106.57	106.83	Open To Flow (1)
20	156.88	106.86	Shut-In(1)
65	1230.96	107.65	End Shut-In(1)
67	203.81	107.37	Open To Flow (2)
111	356.23	108.44	Shut-In(2)
203	1162.06	111.05	End Shut-In(2)
210	1906.91	112.81	Final Hydro-static

## Recovery

Length (ft)	Description	Volume (bbl)
945.00	100% clean gassy oil	10.26
0.00	Oil gravity was 40 corrected.	0.00

## Gas Rates

Choke (inches)	Pressure (psia)	Gas Rate (Mcf/d)



# DRILL STEM TEST REPORT

TOOL DIAGRAM

Shelby Resources, LLC

**35/21s/16w/Pawnee**

2717 Canal BLVD.  
Suite C  
Hays, Ks 67601  
ATTN: Jeremy Schwartz

**P-W Unit #1-35**

Job Ticket: 18618

**DST#: 3**

Test Start: 2014.01.01 @ 01:50:00

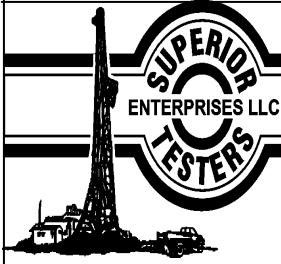
## Tool Information

Drill Pipe:	Length: 3527.00 ft	Diameter: 3.80 inches	Volume: 49.47 bbl	Tool Weight: 2000.00 lb
Heavy Wt. Pipe:	Length: 0.00 ft	Diameter: 0.00 inches	Volume: 0.00 bbl	Weight set on Packer: 20000.00 lb
Drill Collar:	Length: 329.33 ft	Diameter: 2.25 inches	Volume: 1.62 bbl	Weight to Pull Loose: 100000.0 lb
			<u>Total Volume: 51.09 bbl</u>	Tool Chased 0.00 ft
Drill Pipe Above KB:	10.33 ft			String Weight: Initial 76000.00 lb
Depth to Top Packer:	3875.00 ft			Final 80000.00 lb
Depth to Bottom Packer:	ft			
Interval between Packers:	40.00 ft			
Tool Length:	69.00 ft			
Number of Packers:	2	Diameter: 6.75 inches		

Tool Comments:

Tool Description	Length (ft)	Serial No.	Position	Depth (ft)	Accum. Lengths
Change Over Sub	1.00			3847.00	
Shut-In Tool	5.00			3852.00	
Hydroic Tool	5.00			3857.00	
Jars	6.00			3863.00	
Safety Joint	2.00			3865.00	
Packer	5.00			3870.00	29.00 Bottom Of Top Packer
Packer	5.00			3875.00	
Perforations	35.00			3910.00	
Recorder	1.00	6666	Inside	3911.00	
Recorder	1.00	6651	Outside	3912.00	
Bullnose	3.00			3915.00	40.00 Bottom Packers & Anchor

**Total Tool Length: 69.00**



# DRILL STEM TEST REPORT

## FLUID SUMMARY

Shelby Resources, LLC

**35/21s/16w/Pawnee**

2717 Canal BLVD.  
Suite C  
Hays, Ks 67601  
ATTN: Jeremy Schwartz

**P-W Unit #1-35**

Job Ticket: 18618

**DST#: 3**

Test Start: 2014.01.01 @ 01:50:00

### Mud and Cushion Information

Mud Type: Gel Chem  
Mud Weight: 9.00 lb/gal  
Viscosity: 65.00 sec/qt  
Water Loss: 7.98 in<sup>3</sup>  
Resistivity: ohm.m  
Salinity: 3900.00 ppm  
Filter Cake: 1.00 inches

Cushion Type:  
Cushion Length: ft  
Cushion Volume: bbl  
Gas Cushion Type:  
Gas Cushion Pressure: psia

Oil API: deg API  
Water Salinity: ppm

### Recovery Information

Recovery Table

Length ft	Description	Volume bbl
945.00	100% clean gassy oil	10.256
0.00	Oil gravity w as 40 corrected.	0.000

Total Length: 945.00 ft      Total Volume: 10.256 bbl

Num Fluid Samples: 0

Num Gas Bombs: 0

Serial #:

Laboratory Name:

Laboratory Location:

Recovery Comments:

