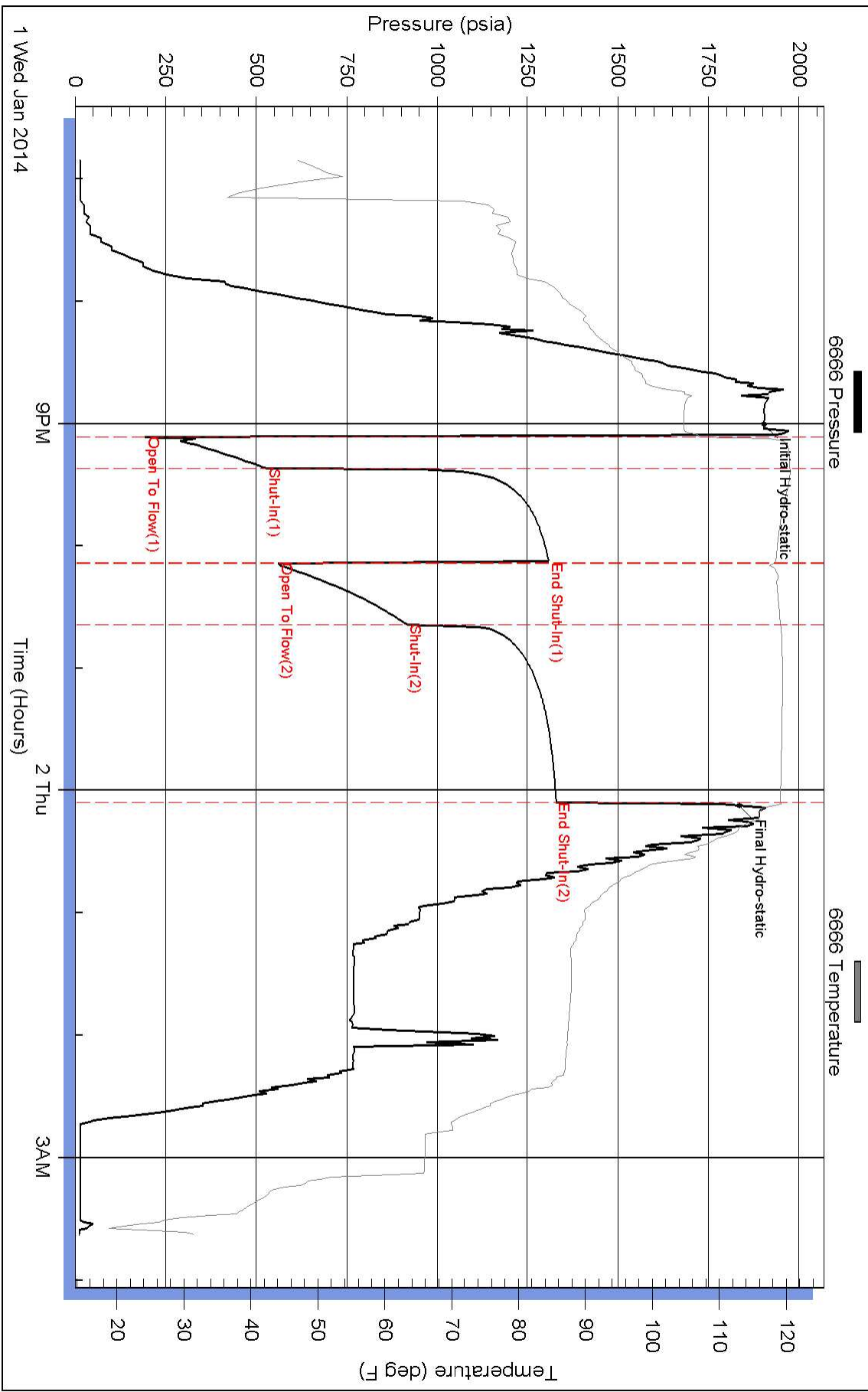


# Pressure vs. Time





# DRILL STEM TEST REPORT

## FLUID SUMMARY

Shelby Resources, LLC

**35/21s/16w/Pawnee**

2717 Canal BLVD.  
Suite C  
Hays, Ks 67601  
ATTN: Jeremy Schwartz

**P-W Unit #1-35**

Job Ticket: 18619

**DST#: 4**

Test Start: 2014.01.01 @ 18:50:00

### Mud and Cushion Information

Mud Type: Gel Chem  
Mud Weight: 9.00 lb/gal  
Viscosity: 62.00 sec/qt  
Water Loss: 8.00 in<sup>3</sup>  
Resistivity: ohm.m  
Salinity: 4000.00 ppm  
Filter Cake: 1.00 inches

Cushion Type:  
Cushion Length: ft  
Cushion Volume: bbl  
Gas Cushion Type:  
Gas Cushion Pressure: psia

Oil API: deg API  
Water Salinity: ppm

### Recovery Information

Recovery Table

Length ft	Description	Volume bbl
1953.00	100% water	24.395
0.00	Chloride recov. 28000 ppm	0.000
0.00	Resist recov. .22 ohms at 40 degrees.	0.000

Total Length: 1953.00 ft      Total Volume: 24.395 bbl

Num Fluid Samples: 0

Num Gas Bombs: 0

Serial #:

Laboratory Name:

Laboratory Location:

Recovery Comments: Reversed fluid at 1575 feet due to presents of H2S gas. Per Tool Pusher.



# DRILL STEM TEST REPORT

**TOOL DIAGRAM**

Shelby Resources, LLC

**35/21s/16w/Pawnee**

2717 Canal BLVD.  
Suite C  
Hays, Ks 67601  
ATTN: Jeremy Schwartz

**P-W Unit #1-35**

Job Ticket: 18619

**DST#: 4**

Test Start: 2014.01.01 @ 18:50:00

## Tool Information

Drill Pipe:	Length: 3567.00 ft	Diameter: 3.80 inches	Volume: 50.04 bbl	Tool Weight: 2000.00 lb
Heavy Wt. Pipe:	Length: 0.00 ft	Diameter: 0.00 inches	Volume: 0.00 bbl	Weight set on Packer: 20000.00 lb
Drill Collar:	Length: 329.33 ft	Diameter: 2.25 inches	Volume: 1.62 bbl	Weight to Pull Loose: 90000.00 lb
			<u>Total Volume: 51.66 bbl</u>	Tool Chased 0.00 ft
Drill Pipe Above KB:	9.33 ft			String Weight: Initial 78000.00 lb
Depth to Top Packer:	3915.00 ft			Final 82000.00 lb
Depth to Bottom Packer:	ft			
Interval between Packers:	43.00 ft			
Tool Length:	71.00 ft			
Number of Packers:	2	Diameter: 6.75 inches		

Tool Comments:

Tool Description	Length (ft)	Serial No.	Position	Depth (ft)	Accum. Lengths
Shut-In Tool	5.00			3892.00	
Hydraulic Tool	5.00			3897.00	
Jars	6.00			3903.00	
Safety Joint	2.00			3905.00	
Packer	5.00			3910.00	28.00 Bottom Of Top Packer
Packer	5.00			3915.00	
Perforations	38.00			3953.00	
Recorder	1.00	6666	Inside	3954.00	
Recorder	1.00	6651	Outside	3955.00	
Bullnose	3.00			3958.00	43.00 Bottom Packers & Anchor
<b>Total Tool Length:</b>	<b>71.00</b>				



# DRILL STEM TEST REPORT

Shelby Resources, LLC  
 2717 Canal BLVD.  
 Suite C  
 Hays, Ks 67601  
 ATTN: Jeremy Schwartz

**35/21s/16w/Pawnee**

**P-W Unit #1-35**

Job Ticket: 18619

**DST#: 4**

Test Start: 2014.01.01 @ 18:50:00

## GENERAL INFORMATION:

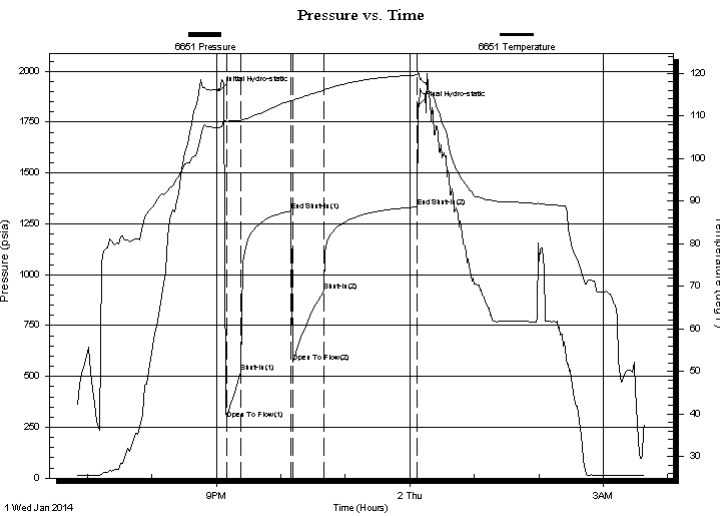
Formation: **Arbuckle**  
 Deviated: No Whipstock: ft (KB)  
 Test Type: Conventional Bottom Hole (Initial)  
 Time Tool Opened: 21:06:30  
 Tester: Shane Konzem  
 Time Test Ended: 03:38:00  
 Unit No: 3330/60/Great Bend  
 Interval: **3915.00 ft (KB) To 3958.00 ft (KB) (TVD)**  
 Reference Elevations: 1991.00 ft (KB)  
 Total Depth: 3958.00 ft (KB) (TVD)  
 1978.00 ft (CF)  
 Hole Diameter: 7.88 inches  
 Hole Condition: Fair  
 KB to GR/CF: 13.00 ft

## Serial #: 6651

**Outside**

Press @ Run Depth: 1333.01 psia @ 3955.00 ft (KB) Capacity: 5000.00 psia  
 Start Date: 2014.01.01 End Date: 2014.01.02 Last Calib.: 2013.12.31  
 Start Time: 18:50:00 End Time: 03:38:30 Time On Btm: 2014.01.01 @ 21:03:00  
 Time Off Btm: 2014.01.02 @ 00:08:00

**TEST COMMENT:** 1st Open/ 15 Minutes. Strong blow built to bottom of 5 gallon bucket in 1 minute and 20 seconds.  
 1st Shut In/ 45 Minutes. No blow back.  
 2nd Open/ 30 Minutes. Strong blow built to bottom of 5 gallon bucket in 2 minutes and 10 seconds.  
 2nd Shut In/ 90 Minutes. No blow back.



## PRESSURE SUMMARY

Time (Min.)	Pressure (psia)	Temp (deg F)	Annotation
0	1905.57	107.38	Initial Hydro-static
7	290.87	108.80	Open To Flow (1)
20	522.70	108.98	Shut-In(1)
66	1312.83	113.64	End Shut-In(1)
68	570.40	113.63	Open To Flow (2)
97	919.43	116.09	Shut-In(2)
184	1333.01	119.69	End Shut-In(2)
185	1832.13	120.27	Final Hydro-static

## Recovery

Length (ft)	Description	Volume (bbl)
1953.00	100% w ater	24.40
0.00	Chloride recov. 28000 ppm	0.00
0.00	Resist recov. .22 ohms at 40 degrees.	0.00

## Gas Rates

	Choke (inches)	Pressure (psia)	Gas Rate (Mcf/d)



# DRILL STEM TEST REPORT

Shelby Resources, LLC  
 2717 Canal BLVD.  
 Suite C  
 Hays, Ks 67601  
 ATTN: Jeremy Schwartz

**35/21s/16w/Pawnee**

**P-W Unit #1-35**

Job Ticket: 18619

**DST#: 4**

Test Start: 2014.01.01 @ 18:50:00

## GENERAL INFORMATION:

Formation: **Arbuckle**  
 Deviated: No Whipstock: ft (KB)  
 Test Type: Conventional Bottom Hole (Initial)  
 Time Tool Opened: 21:06:30  
 Tester: Shane Konzem  
 Time Test Ended: 03:38:00  
 Unit No: 3330/60/Great Bend  
 Interval: **3915.00 ft (KB) To 3958.00 ft (KB) (TVD)**  
 Reference Elevations: 1991.00 ft (KB)  
 Total Depth: 3958.00 ft (KB) (TVD)  
 1978.00 ft (CF)  
 Hole Diameter: 7.88 inches  
 Hole Condition: Fair  
 KB to GR/CF: 13.00 ft

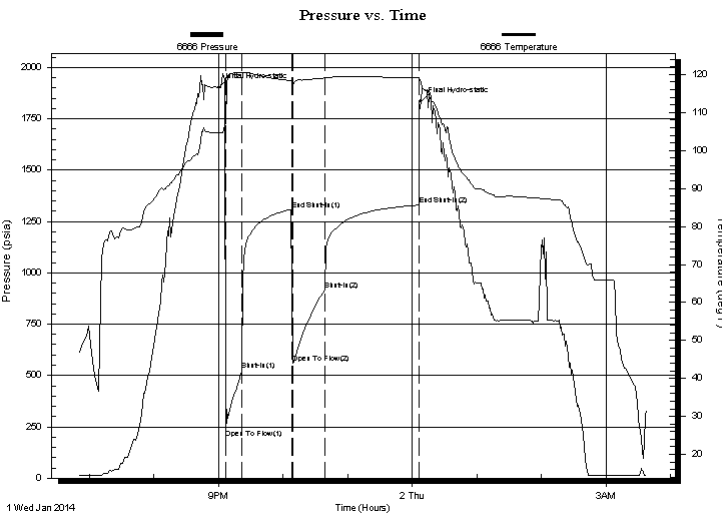
## Serial #: 6666

Inside

Press @ RunDepth: 916.69 psia @ 3954.00 ft (KB) Capacity: 5000.00 psia  
 Start Date: 2014.01.01 End Date: 2014.01.02 Last Calib.: 2014.01.02  
 Start Time: 18:50:00 End Time: 03:38:00 Time On Btm: 2014.01.01 @ 21:00:30  
 Time Off Btm: 2014.01.02 @ 00:07:30

**TEST COMMENT:** 1st Open/ 15 Minutes. Strong blow built to bottom of 5 gallon bucket in 1 minute and 20 seconds.  
 1st Shut In/ 45 Minutes. No blow back.  
 2nd Open/ 30 Minutes. Strong blow built to bottom of 5 gallon bucket in 2 minutes and 10 seconds.  
 2nd Shut In/ 90 Minutes. No blow back.

## PRESSURE SUMMARY



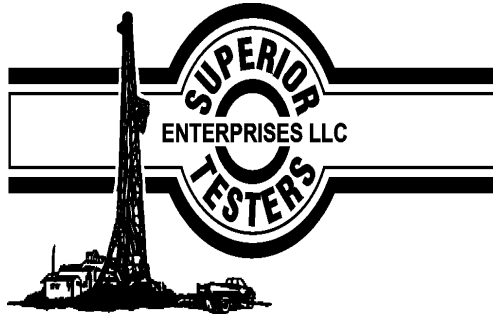
Time (Min.)	Pressure (psia)	Temp (deg F)	Annotation
0	1902.67	104.69	Initial Hydro-static
6	193.30	106.94	Open To Flow (1)
22	528.51	120.42	Shut-In(1)
68	1309.34	118.39	End Shut-In(1)
68	560.85	118.16	Open To Flow (2)
98	916.69	119.07	Shut-In(2)
186	1329.22	119.11	End Shut-In(2)
187	1834.40	118.19	Final Hydro-static

## Recovery

Length (ft)	Description	Volume (bbl)
1953.00	100% w ater	24.40
0.00	Chloride recov. 28000 ppm	0.00
0.00	Resist recov. .22 ohms at 40 degrees.	0.00

## Gas Rates

	Choke (inches)	Pressure (psia)	Gas Rate (Mcf/d)



## DRILL STEM TEST REPORT

Prepared For: **Shelby Resources, LLC**

2717 Canal BLVD.  
Suite C  
Hays, Ks 67601

ATTN: Jeremy Schwartz

### **P-W Unit #1-35**

#### **35/21s/16w/Pawnee**

Start Date: 2014.01.01 @ 18:50:00

End Date: 2014.01.02 @ 03:38:00

Job Ticket #: 18619                      DST #: 4

Superior Testers Enterprises LLC  
PO Box 138 Great Bend KS 67530  
1-800-792-6902

Printed: 2013.12.31 @ 05:47:03