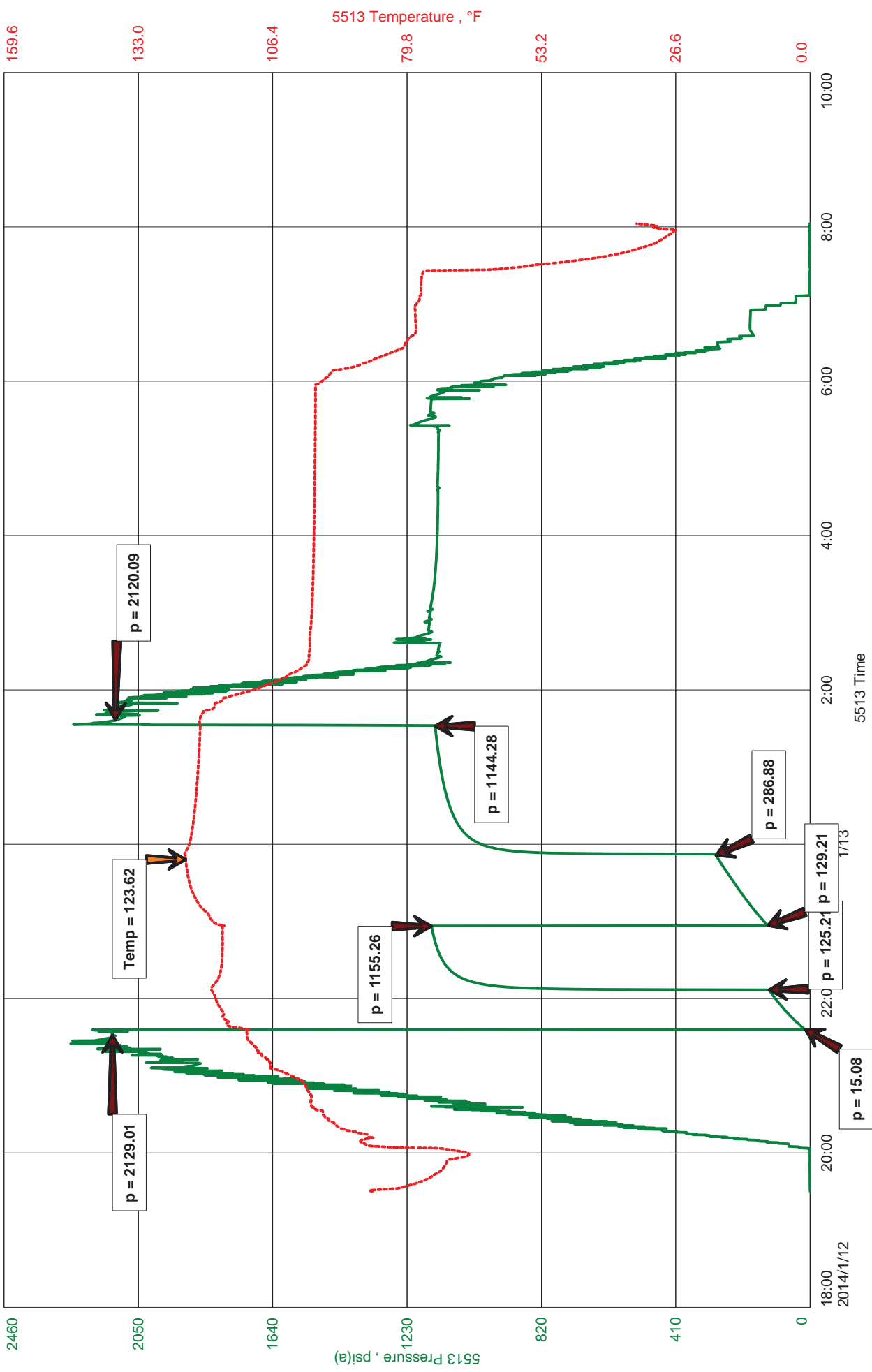


Grand Mesa Operating Company
DST #1 Marmaton 4356-4474
Start Test Date: 2014/01/12
Final Test Date: 2014/01/13

BFF #1-35
Formation: Marmaton
Pool: Wildcat
Job Number: K076

BFF #1-35





JASON MCLEMORE

CELL # 620-617-0527

General Information

Company Name	Grand Mesa Operating Company	Job Number	K076
Contact	James Reilly	Representative	Jason McLemore
Well Name	BFF #1-35	Well Operator	Grand Mesa Operating Company
Unique Well ID	DST #1 Marmaton 4356-4474	Prepared By	Jason McLemore
Surface Location	35-16s-33w Scott	Qualified By	John Goldsmith
Field	Wildcat	Test Unit	#7
Well Type	Vertical		

Test Information

Test Type	Drill Stem Test	Representative	Jason McLemore
Formation	Marmaton	Well Operator	Grand Mesa Operating Company
Well Fluid Type	01 Oil	Report Date	2014/01/13
Test Purpose (AEUB)	Initial Test	Prepared By	Jason McLemore
Start Test Date	2014/01/12	Start Test Time	19:30:00
Final Test Date	2014/01/13	Final Test Time	08:03:00

Test Results

RECOVERED:

165	Muddy Water With Oil Specks, 1% Oil, 94% Water, 5% Mud
420	Muddy Water, 95% Water, 5% Mud

CHLORIDES: 65000
PH: 7
RW: .150 @ 50



DIAMOND TESTING
P.O. Box 157
HOISINGTON, KANSAS 67544
(800) 542-7313
DRILL-STEM TEST TICKET
FILE: bff1dst1

TIME ON: 7:30 PM
TIME OFF: 8:03 AM

Company Grand Mesa Operating Company Lease & Well No. BFF #1-35
Contractor Duke #4 Charge to Grand Mesa Operating Company
Elevation 2979 KB Formation Marmaton Effective Pay _____ Ft. Ticket No. K076
Date 1-12-14 Sec. 35 Twp. 16 S Range 33 W County Scott State KANSAS
Test Approved By John Goldsmith Diamond Representative Jason McLemore

Formation Test No. 1 Interval Tested from 4356 ft. to 4474 ft. Total Depth 4474 ft.
Packer Depth 4351 ft. Size 6 3/4 in. Packer depth _____ ft. Size 6 3/4 in.
Packer Depth 4356 ft. Size 6 3/4 in. Packer depth _____ ft. Size 6 3/4 in.

Depth of Selective Zone Set _____

Top Recorder Depth (Inside) 4337 ft. Recorder Number 5513 Cap. 5000 P.S.I.
Bottom Recorder Depth (Outside) 4338 ft. Recorder Number 5588 Cap. 6000 P.S.I.
Below Straddle Recorder Depth _____ ft. Recorder Number _____ Cap. _____ P.S.I.

Mud Type Chemical Viscosity 60 Drill Collar Length 0 ft. I.D. 2 1/4 in.
Weight 9.2 Water Loss 6.4 cc. Weight Pipe Length 0 ft. I.D. 2 7/8 in.
Chlorides 3500 P.P.M. Drill Pipe Length 4323 ft. I.D. 3 1/2 in.
Jars: Make STERLING Serial Number 6 Test Tool Length 33 ft. Tool Size 3 1/2-IF in.
Did Well Flow? NO Reversed Out NO Anchor Length 118 ft. Size 4 1/2-FH in.
Main Hole Size 7 7/8 Tool Joint Size 4 1/2 XH in. 93' DP in Anchor Surface Choke Size 1 in. Bottom Choke Size 5/8 in.

Blow: 1st Open: Good Blow, BOB in 11 Min., No Blowback
2nd Open: Good Blow, BOB in 13 Min., No Blowback

Recovered 165 ft. of Muddy Water w/Oil Specks, 1% Oil, 95% Water, 5% Mud
Recovered 420 ft. of Muddy Water, 95% Water, 5% Mud
Recovered 585 ft. of Total Fluid

Recovered _____ ft. of _____	Price Job
Recovered _____ ft. of _____	Other Charges
Recovered _____ ft. of _____	Insurance
Remarks: <u>CHLORIDES 65,000</u>	Total
<u>PH: 7</u>	
<u>RW: .150 @ 50</u>	

Time Set Packer(s) 9:37 PM A.M. P.M. Time Started Off Bottom 1:22 AM A.M. P.M. Maximum Temperature 124

Initial Hydrostatic Pressure..... (A) 2129 P.S.I.
Initial Flow Period..... Minutes 30 (B) 15 P.S.I. to (C) 125 P.S.I.
Initial Closed In Period..... Minutes 45 (D) 1155 P.S.I.
Final Flow Period..... Minutes 60 (E) 129 P.S.I. to (F) 287 P.S.I.
Final Closed In Period..... Minutes 90 (G) 1144 P.S.I.
Final Hydrostatic Pressure..... (H) 2120 P.S.I.

Diamond Testing shall not be liable for damages of any kind to the property or personnel of the one for whom a test is made or for any loss suffered or sustained, directly or indirectly, through the use of its equipment, or its statement or opinion concerning the result of any test. Tools lost or damaged in the hole shall be paid for at cost by the party for whom the test is made.