



DRILL STEM TEST REPORT

Prepared For: **Jason Oil Company LLC**

PO Box 701
Russell KS 67665-0701

ATTN: Jim Schoenberger, Ste

Unrein #1

25-20s-20w Pawnee,KS

Start Date: 2013.11.27 @ 17:16:03

End Date: 2013.11.28 @ 00:24:12

Job Ticket #: 55452 DST #: 1

Trilobite Testing, Inc
PO Box 362 Hays, KS 67601
ph: 785-625-4778 fax: 785-625-5620

Printed: 2013.11.29 @ 11:55:59



TRILOBITE TESTING, INC

DRILL STEM TEST REPORT

Jason Oil Company LLC

25-20s-20w Pawnee, KS

PO Box 701
Russell KS 67665-0701

Unrein #1

Job Ticket: 55452

DST#: 1

ATTN: Jim Schoenberger, Ste

Test Start: 2013.11.27 @ 17:16:03

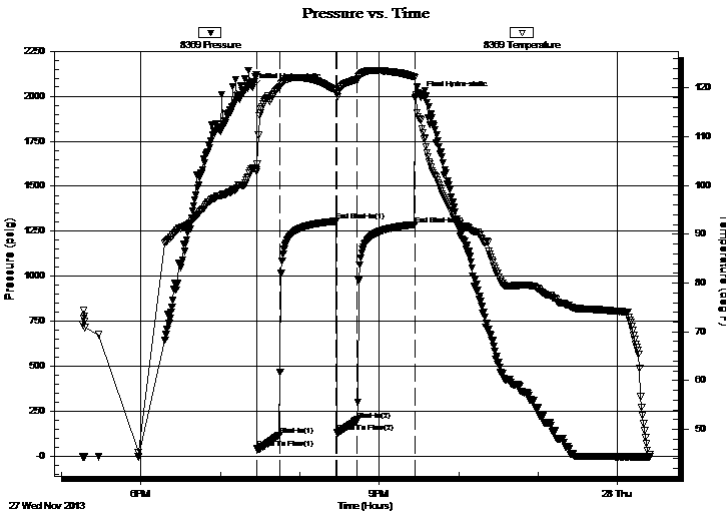
GENERAL INFORMATION:

Formation: **Miss**
 Deviated: No Whipstock: ft (KB)
 Time Tool Opened: 19:27:43
 Time Test Ended: 00:24:12
 Interval: **4268.00 ft (KB) To 4275.00 ft (KB) (TVD)**
 Total Depth: 4275.00 ft (KB) (TVD)
 Hole Diameter: 7.88 inches Hole Condition: Fair
 Test Type: Conventional Bottom Hole (Initial)
 Tester: Ray Schwager
 Unit No: 70
 Reference Elevations: 2211.00 ft (KB)
 2199.00 ft (CF)
 KB to GR/CF: 12.00 ft

Serial #: 8369 Inside
 Press@RunDepth: 204.38 psig @ 4269.00 ft (KB) Capacity: 8000.00 psig
 Start Date: 2013.11.27 End Date: 2013.11.28 Last Calib.: 2013.11.28
 Start Time: 17:16:03 End Time: 00:24:12 Time On Btm: 2013.11.27 @ 19:24:28
 Time Off Btm: 2013.11.27 @ 21:30:58

TEST COMMENT: 15-IFP-strg bl in 1 min
 45-ISIP-strg bl bk
 15-FFP-strg bl thru-out
 45-FSIP-strg bl bk

PRESSURE SUMMARY



Time (Min.)	Pressure (psig)	Temp (deg F)	Annotation
0	2046.13	103.52	Initial Hydro-static
4	46.79	102.83	Open To Flow (1)
21	121.59	120.05	Shut-In(1)
63	1306.72	119.49	End Shut-In(1)
64	133.88	118.85	Open To Flow (2)
79	204.38	121.76	Shut-In(2)
123	1287.99	122.27	End Shut-In(2)
127	2001.63	113.57	Final Hydro-static

Recovery

Length (ft)	Description	Volume (bbl)
0.00	2540'GIP	0.00
795.00	CO	11.15
72.00	HO&GCM 25%G20%O10%W35%M	1.01

Gas Rates

	Choke (inches)	Pressure (psig)	Gas Rate (Mcf/d)



**TRILOBITE
TESTING, INC**

DRILL STEM TEST REPORT

Jason Oil Company LLC

25-20s-20w Pawnee, KS

PO Box 701
Russell KS 67665-0701

Unrein #1

Job Ticket: 55452

DST#: 1

ATTN: Jim Schoenberger, Ste

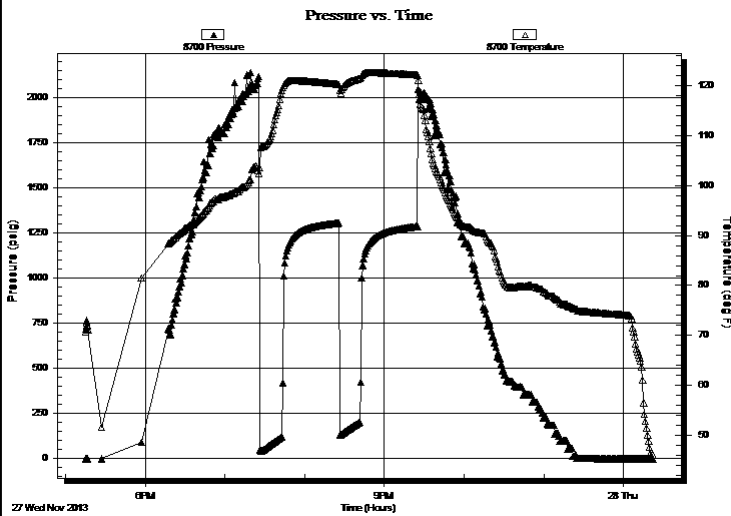
Test Start: 2013.11.27 @ 17:16:03

GENERAL INFORMATION:

Formation: **Miss**
 Deviated: No Whipstock: ft (KB)
 Test Type: Conventional Bottom Hole (Initial)
 Time Tool Opened: 19:27:43 Tester: Ray Schwager
 Time Test Ended: 00:24:12 Unit No: 70
 Interval: **4268.00 ft (KB) To 4275.00 ft (KB) (TVD)** Reference Elevations: 2211.00 ft (KB)
 Total Depth: 4275.00 ft (KB) (TVD) 2199.00 ft (CF)
 Hole Diameter: 7.88 inches Hole Condition: Fair KB to GR/CF: 12.00 ft

Serial #: 8700 Outside
 Press@RunDepth: psig @ 4269.00 ft (KB) Capacity: 8000.00 psig
 Start Date: 2013.11.27 End Date: 2013.11.28 Last Calib.: 2013.11.28
 Start Time: 17:15:10 End Time: 00:21:49 Time On Btm:
 Time Off Btm:

TEST COMMENT: 15-IFP-strg bl in 1 min
 45-ISIP-strg bl bk
 15-FFP-strg bl thru-out
 45-FSIP-strg bl bk



PRESSURE SUMMARY

Time (Min.)	Pressure (psig)	Temp (deg F)	Annotation

Recovery

Length (ft)	Description	Volume (bbl)
0.00	2540'GIP	0.00
795.00	CO	11.15
72.00	HO&GCM 25%G20%O10%W35%M	1.01

Gas Rates

Choke (inches)	Pressure (psig)	Gas Rate (Mcf/d)



**TRILOBITE
TESTING, INC**

DRILL STEM TEST REPORT

TOOL DIAGRAM

Jason Oil Company LLC

25-20s-20w Pawnee,KS

PO Box 701
Russell KS 67665-0701

Unrein #1

Job Ticket: 55452

DST#: 1

ATTN: Jim Schoenberger, Ste

Test Start: 2013.11.27 @ 17:16:03

Tool Information

Drill Pipe:	Length: 4252.00 ft	Diameter: 3.80 inches	Volume: 59.64 bbl	Tool Weight: 2200.00 lb
Heavy Wt. Pipe:	Length: 0.00 ft	Diameter: 0.00 inches	Volume: 0.00 bbl	Weight set on Packer: 25000.00 lb
Drill Collar:	Length: 0.00 ft	Diameter: 0.00 inches	Volume: 0.00 bbl	Weight to Pull Loose: 60000.00 lb
			<u>Total Volume: 59.64 bbl</u>	Tool Chased 0.00 ft
Drill Pipe Above KB:	5.00 ft			String Weight: Initial 46000.00 lb
Depth to Top Packer:	4268.00 ft			Final 47000.00 lb
Depth to Bottom Packer:	ft			
Interval between Packers:	7.00 ft			
Tool Length:	28.00 ft			
Number of Packers:	2	Diameter: 6.75 inches		

Tool Comments:

Tool Description

Tool Description	Length (ft)	Serial No.	Position	Depth (ft)	Accum. Lengths
Change Over Sub	1.00			4248.00	
Shut In Tool	5.00			4253.00	
Hydraulic tool	5.00			4258.00	
Packer	5.00			4263.00	21.00 Bottom Of Top Packer
Packer	5.00			4268.00	
Stubb	1.00			4269.00	
Recorder	0.00	8369	Inside	4269.00	
Recorder	0.00	8700	Outside	4269.00	
Perforations	3.00			4272.00	
Bullnose	3.00			4275.00	7.00 Bottom Packers & Anchor
Total Tool Length:	28.00				



**TRILOBITE
TESTING, INC**

DRILL STEM TEST REPORT

FLUID SUMMARY

Jason Oil Company LLC

25-20s-20w Pawnee,KS

PO Box 701
Russell KS 67665-0701

Unrein #1

Job Ticket: 55452

DST#: 1

ATTN: Jim Schoenberger, Ste

Test Start: 2013.11.27 @ 17:16:03

Mud and Cushion Information

Mud Type: Gel Chem
Mud Weight: 9.00 lb/gal
Viscosity: 52.00 sec/qt
Water Loss: 8.77 in³
Resistivity: ohm.m
Salinity: 7000.00 ppm
Filter Cake: 2.00 inches

Cushion Type:
Cushion Length: ft
Cushion Volume: bbl
Gas Cushion Type:
Gas Cushion Pressure: psig

Oil API: 35 deg API
Water Salinity: ppm

Recovery Information

Recovery Table

Length ft	Description	Volume bbl
0.00	2540'GIP	0.000
795.00	CO	11.152
72.00	HO&GCM 25%G20%O10%W35%M	1.010

Total Length: 867.00 ft Total Volume: 12.162 bbl

Num Fluid Samples: 0

Num Gas Bombs: 0

Serial #:

Laboratory Name:

Laboratory Location:

Recovery Comments:

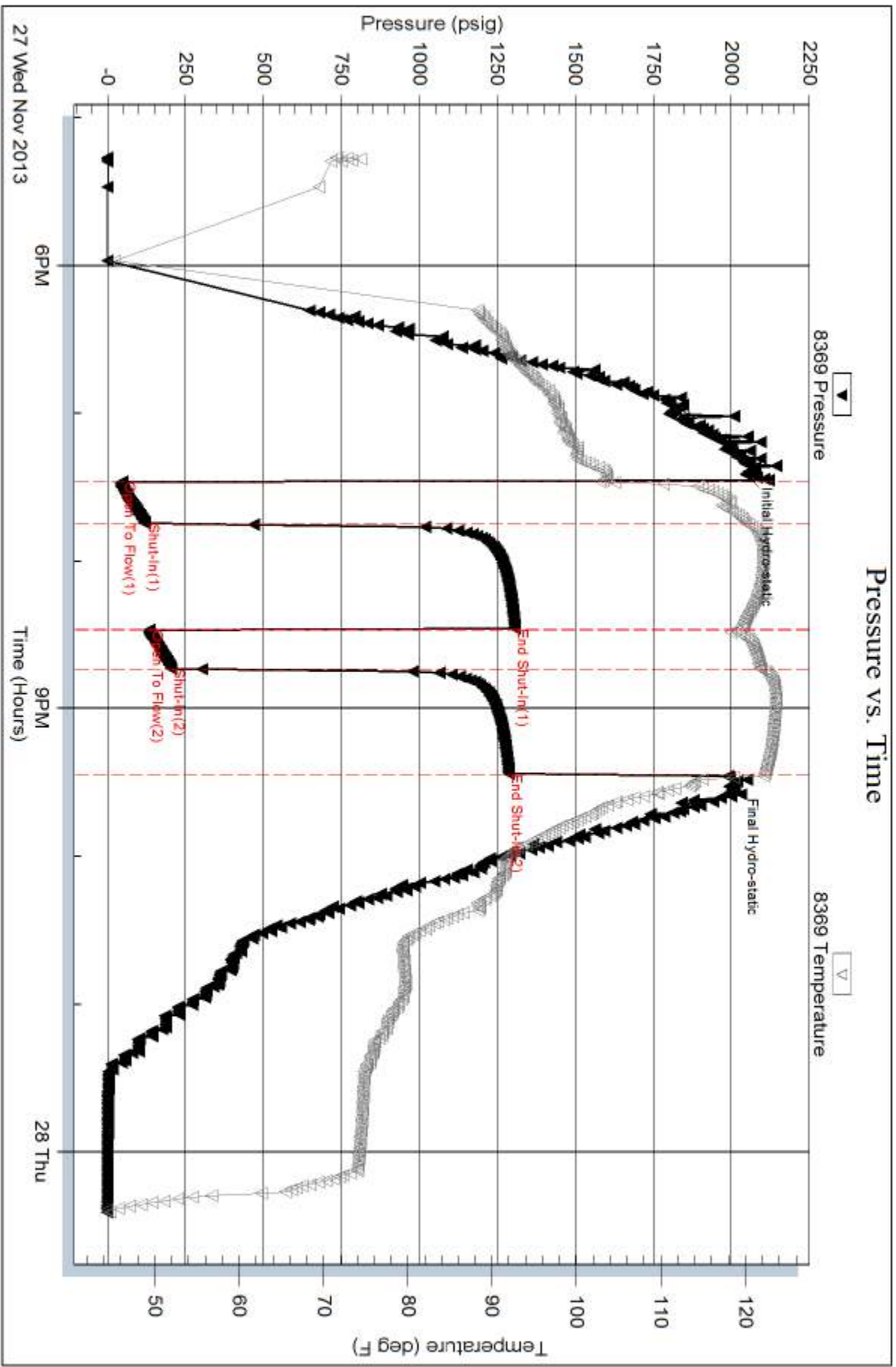
Serial #: 8369

Inside

Jason Oil Company LLC

Unrein #1

DST Test Number: 1



Triobite Testing, Inc

Ref. No: 55452

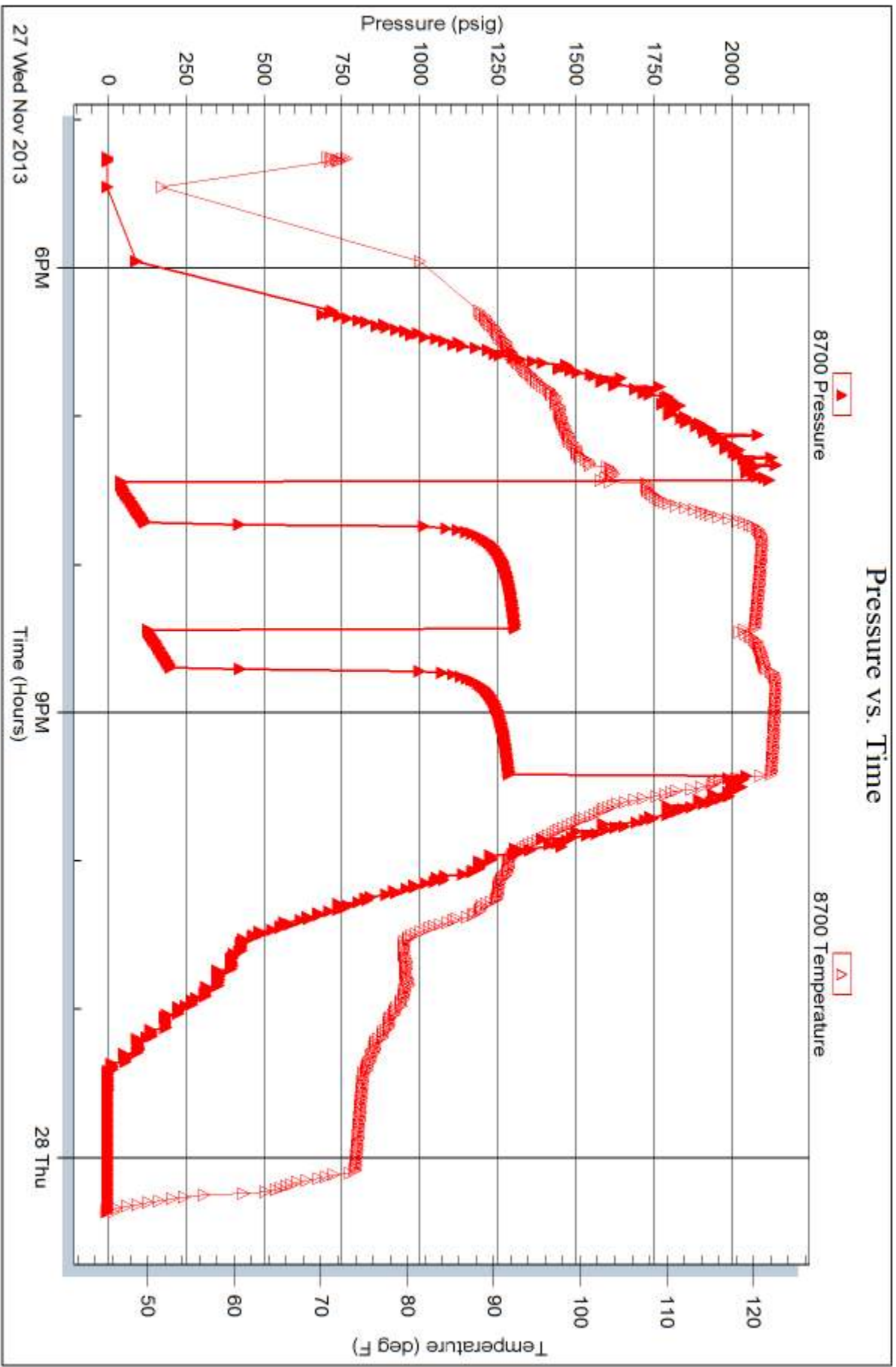
Printed: 2013.11.29 @ 11:56:01

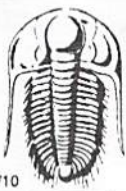
Serial #: 8700

Outside Jason Oil Company LLC

Unrein #1

DST Test Number: 1





TRILOBITE TESTING INC.

1515 Commerce Parkway • Hays, Kansas 67601

Test Ticket

NO. 55452

Well Name & No. Unrein #1 Test No. 1 Date 11-27-13
 Company Jason Oil Company LLC Elevation 2211 KB 2199 GL
 Address P.O. Box 701 Russell, Mo 67665-0701
 Co. Rep / Geo. Steve Reed Rig Southwind rig 70
 Location: Sec. 25 Twp. 20^S Rge. 20^W Co. Pawnee State Ko

Interval Tested 4268-4275 Zone Tested Miss
 Anchor Length 7 Drill Pipe Run 4252 Mud Wt. 9.2
 Top Packer Depth 4263 Drill Collars Run - Vis 52
 Bottom Packer Depth 4268 Wt. Pipe Run - WL 8.8
 Total Depth 4275 Chlorides 7000 ppm System LCM 1#

Blow Description IFP - STRONG BLOW IN 1 MIN
ISTP - STRONG BLOW THRU-OUT
FFP - STRONG BLOW THRU-OUT
KSTP - STRONG BLOW BACK

Rec	Feet of	%gas	%oil	%water	%mud
<u>2540</u>	<u>GIP</u>				
<u>795</u>	<u>CO</u>				
<u>72</u>	<u>HO+GCM</u>	<u>25</u>	<u>20</u>	<u>10</u>	<u>35</u>

Rec Total 867 BHT 122 Gravity 35 API RW - @ - °F Chlorides - ppm

(A) Initial Hydrostatic 2046 Test 1250 T-On Location 1545
 (B) First Initial Flow 46 Jars - T-Started 1715
 (C) First Final Flow 121 Safety Joint - T-Open 1925
 (D) Initial Shut-In 1306 Circ Sub - T-Pulled 2125
 (E) Second Initial Flow 133 Hourly Standby - T-Out 2024
 (F) Second Final Flow 204 Mileage 106 RT 164.30
 (G) Final Shut-In 1288 Sampler -
 (H) Final Hydrostatic 2001 Straddle - Ruined Shale Packer -
 Shale Packer - Ruined Packer -

Initial Open 15 Extra Packer - Extra Copies -
 Initial Shut-In 45 Extra Recorder - Sub Total 0
 Final Flow 15 Day Standby - Total 1414.30
 Final Shut-In 45 Accessibility - MP/DST Disc't -
 Sub Total 1414.30

Approved By _____ Our Representative Ray Schwager *Thank you*

Trilobite Testing Inc. shall not be liable for damaged of any kind of the property or personnel of the one for whom a test is made, or for any loss suffered or sustained, directly or indirectly, through the use of its equipment, or its statements or opinion concerning the results of any test, tools lost or damaged in the hole shall be paid for at cost by the party for whom the test is made.