



DRILL STEM TEST REPORT

Prepared For: **McElvain Energy Inc.**

1050 17 th. St. Ste 2500
Denver CO 80265

ATTN: Chris Mitchell/Jeff

Justus #12-15

12-10s-22w. Graham,KS

Start Date: 2013.11.09 @ 08:41:25

End Date: 2013.11.09 @ 17:55:25

Job Ticket #: 55855 DST #: 1

Trilobite Testing, Inc
PO Box 362 Hays, KS 67601
ph: 785-625-4778 fax: 785-625-5620

Printed: 2013.11.15 @ 10:04:00



**TRILOBITE
TESTING, INC**

DRILL STEM TEST REPORT

McElvain Energy Inc.

12-10s-22w. Graham,KS

1050 17 th. St. Ste 2500
Denver CO 80265

Justus #12-15

Job Ticket: 55855

DST#: 1

ATTN: Chris Mitchell/Jeff

Test Start: 2013.11.09 @ 08:41:25

GENERAL INFORMATION:

Formation: **LKC "A-C"**

Deviated: No Whipstock: ft (KB)

Time Tool Opened: 11:10:25

Time Test Ended: 17:55:25

Test Type: Conventional Bottom Hole (Initial)

Tester: Bob Hamel

Unit No: 67

Interval: 3529.00 ft (KB) To 3598.00 ft (KB) (TVD)

Reference Elevations: 2287.00 ft (KB)

Total Depth: 3598.00 ft (KB) (TVD)

2277.00 ft (CF)

Hole Diameter: 7.88 inches Hole Condition: Fair

KB to GR/CF: 10.00 ft

Serial #: 6625 Inside

Press@RunDepth: 71.94 psig @ 3567.00 ft (KB)

Capacity: 8000.00 psig

Start Date: 2013.11.09

End Date:

2013.11.09

Last Calib.:

2013.11.09

Start Time: 08:41:26

End Time:

17:55:25

Time On Btm:

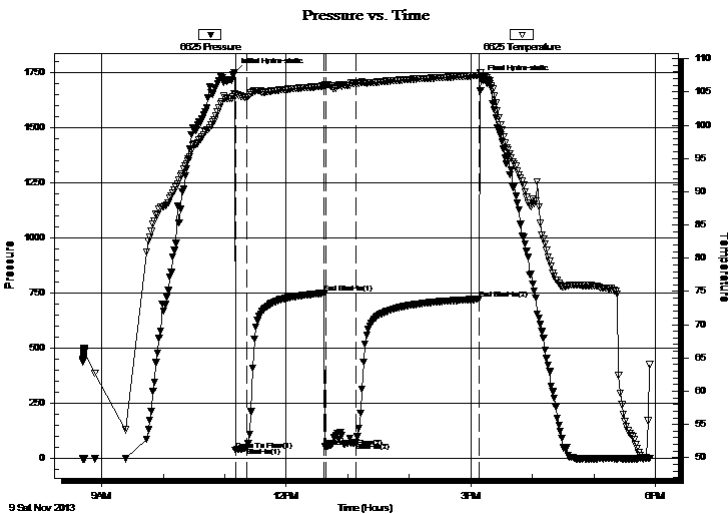
2013.11.09 @ 11:09:25

Time Off Btm:

2013.11.09 @ 15:09:55

TEST COMMENT: I.F. - 10 - Blow built to 1 1/2 "
I.S.I. - 75 - No blow back
F.F. - 30 - Blow built to 6 1/2 "
F.S.I. - 120 - No blow back

PRESSURE SUMMARY



Time (Min.)	Pressure (psig)	Temp (deg F)	Annotation
0	1749.38	104.75	Initial Hydro-static
1	35.62	104.53	Open To Flow (1)
13	48.96	104.21	Shut-In(1)
88	749.03	105.89	End Shut-In(1)
89	51.37	106.09	Open To Flow (2)
119	71.94	106.31	Shut-In(2)
239	721.91	107.50	End Shut-In(2)
241	1717.37	107.95	Final Hydro-static

Recovery

Length (ft)	Description	Volume (bbl)
63.00	H ₂ O,C,M, 20%GAS 20%OIL 60%MUD	0.31
20.00	H ₂ O,C,M, 20% OIL 80% MUD	0.10
0.00	GIP 40'	0.00

Gas Rates

	Choke (inches)	Pressure (psig)	Gas Rate (Mcf/d)



**TRILOBITE
TESTING, INC**

DRILL STEM TEST REPORT

TOOL DIAGRAM

McElvain Energy Inc.

12-10s-22w. Graham,KS

1050 17 th. St. Ste 2500
Denver CO 80265

Justus #12-15

Job Ticket: 55855

DST#: 1

ATTN: Chris Mitchell/Jeff

Test Start: 2013.11.09 @ 08:41:25

Tool Information

Drill Pipe:	Length: 3505.00 ft	Diameter: 2.25 inches	Volume: 17.24 bbl	Tool Weight: 2500.00 lb
Heavy Wt. Pipe:	Length: 0.00 ft	Diameter: 2.70 inches	Volume: 0.00 bbl	Weight set on Packer: 25000.00 lb
Drill Collar:	Length: 0.00 ft	Diameter: 2.25 inches	Volume: 0.00 bbl	Weight to Pull Loose: 60000.00 lb
			<u>Total Volume: 17.24 bbl</u>	Tool Chased 3.00 ft
Drill Pipe Above KB:	10.00 ft			String Weight: Initial 57000.00 lb
Depth to Top Packer:	3529.00 ft			Final 57000.00 lb
Depth to Bottom Packer:	ft			
Interval between Packers:	68.00 ft			
Tool Length:	102.00 ft			
Number of Packers:	2	Diameter: 6.75 inches		

Tool Comments:

Tool Description

Tool Description	Length (ft)	Serial No.	Position	Depth (ft)	Accum. Lengths
Recorder	0.00	8167	Fluid	3495.00	
Stubb	5.00			3500.00	
Shut In Tool	5.00			3505.00	
Sampler	2.00			3507.00	
Hydraulic tool	5.00			3512.00	
Jars	5.00			3517.00	
Safety Joint	3.00			3520.00	
Packer	4.00			3524.00	34.00 Bottom Of Top Packer
Packer	5.00			3529.00	
Stubb	1.00			3530.00	
Perforations	4.00			3534.00	
Change Over Sub	1.00			3535.00	
Drill Pipe	31.00			3566.00	
Change Over Sub	1.00			3567.00	
Recorder	0.00	6625	Inside	3567.00	
Recorder	0.00	8679	Outside	3567.00	
Perforations	27.00			3594.00	
Bullnose	3.00			3597.00	68.00 Bottom Packers & Anchor

Total Tool Length: 102.00



**TRILOBITE
TESTING, INC**

DRILL STEM TEST REPORT

FLUID SUMMARY

McElvain Energy Inc.

12-10s-22w. Graham,KS

1050 17 th. St. Ste 2500
Denver CO 80265

Justus #12-15

Job Ticket: 55855

DST#: 1

ATTN: Chris Mitchell/Jeff

Test Start: 2013.11.09 @ 08:41:25

Mud and Cushion Information

Mud Type: Gel Chem

Cushion Type:

Oil API:

deg API

Mud Weight: 9.00 lb/gal

Cushion Length:

ft

Water Salinity:

ppm

Viscosity: 55.00 sec/qt

Cushion Volume:

bbbl

Water Loss: 5.37 in³

Gas Cushion Type:

Resistivity: ohm.m

Gas Cushion Pressure:

psig

Salinity: 2400.00 ppm

Filter Cake: 2.00 inches

Recovery Information

Recovery Table

Length ft	Description	Volume bbl
63.00	H ₂ O,C,M, 20%GAS 20%OIL 60%MUD	0.310
20.00	H ₂ O,C,M, 20% OIL 80% MUD	0.098
0.00	GIP 40'	0.000

Total Length: 83.00 ft Total Volume: 0.408 bbl

Num Fluid Samples: 0

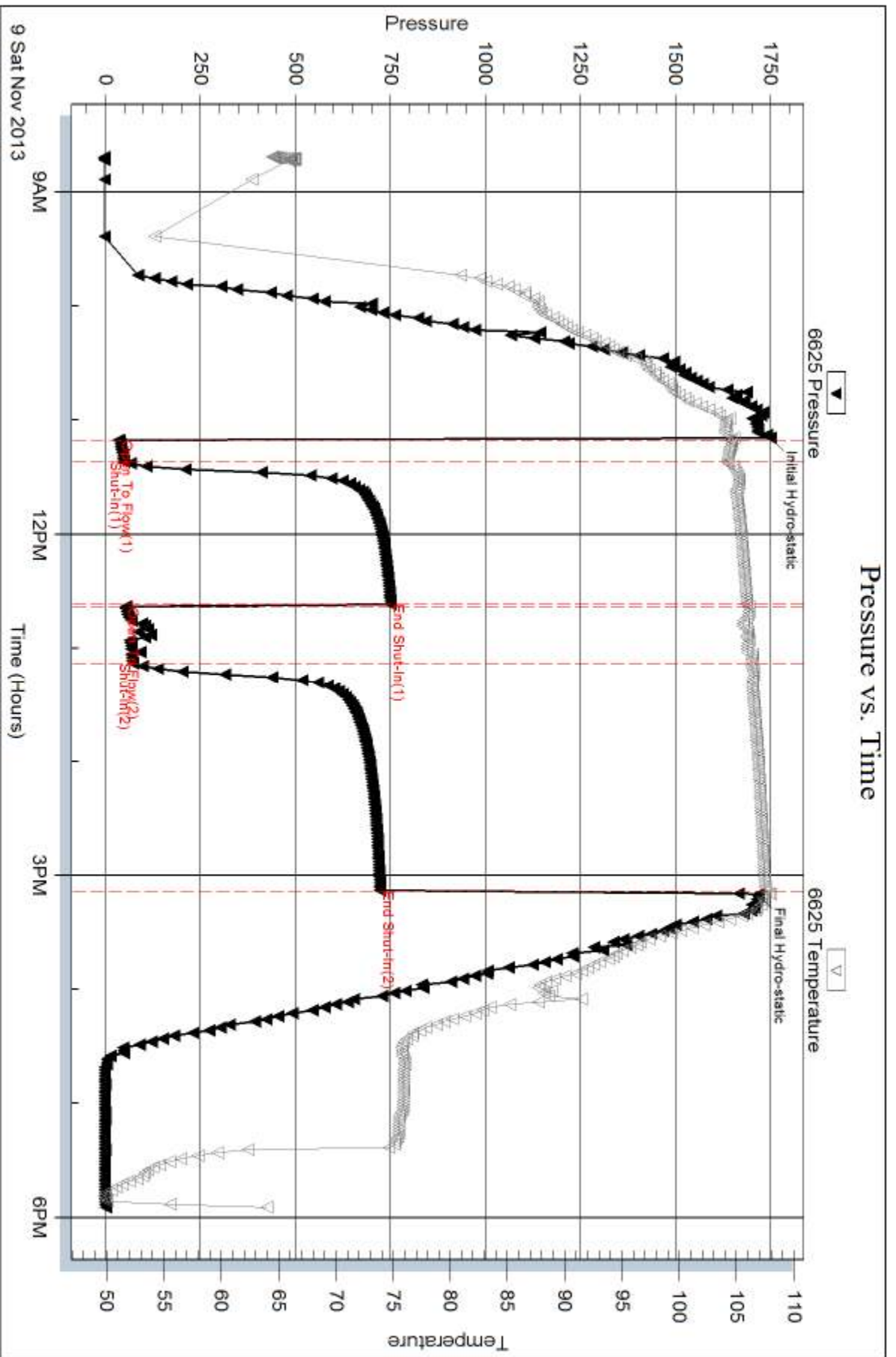
Num Gas Bombs: 0

Serial #:

Laboratory Name:

Laboratory Location:

Recovery Comments: Sampler 400mL oil 1200mL mud 60psi

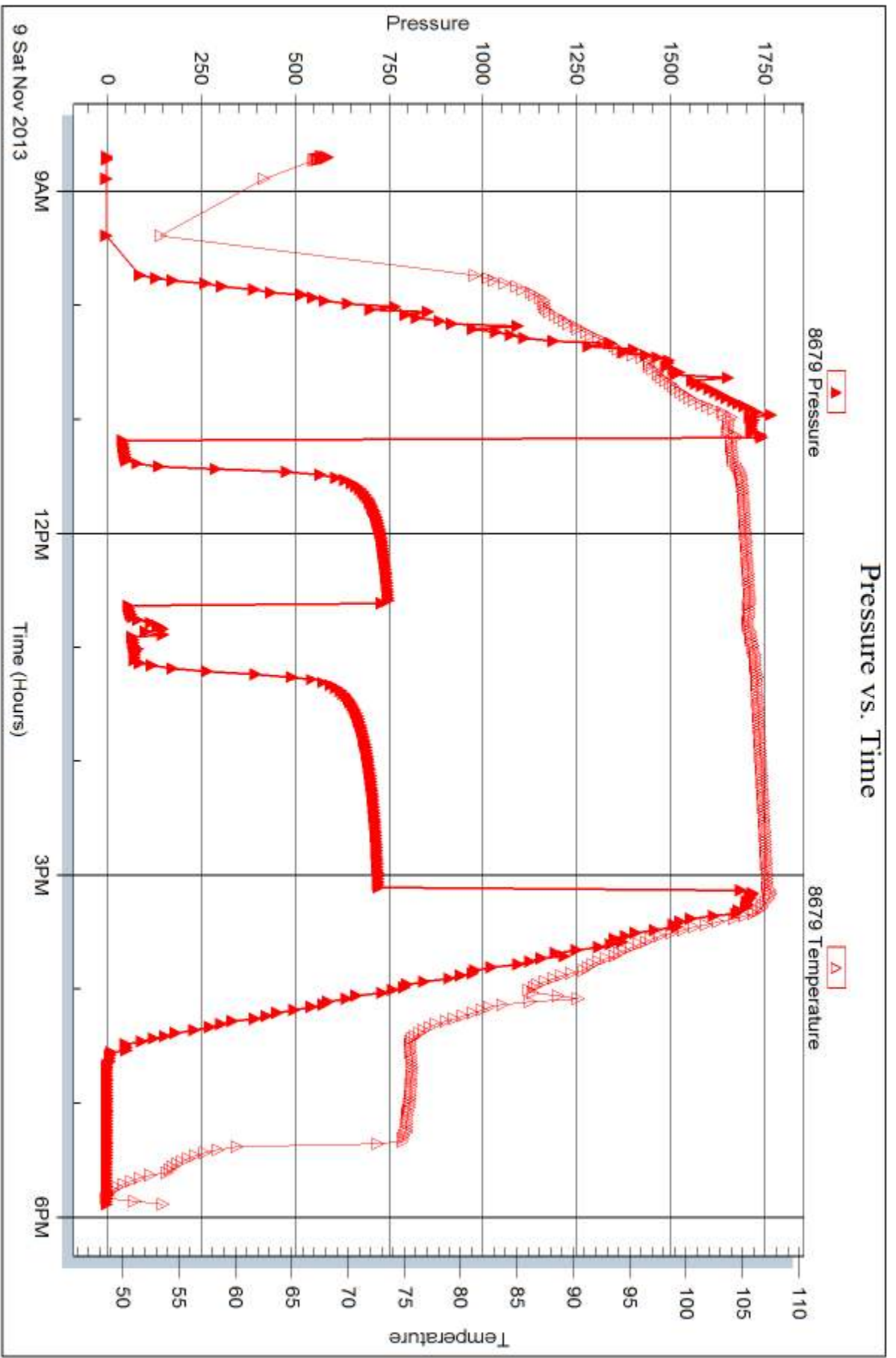


Serial #: 8679

Outside McElvain Energy Inc.

Justus #12-15

DST Test Number: 1





DRILL STEM TEST REPORT

Prepared For: **McElvain Energy Inc.**

1050 17 th. St. Ste 2500
Denver CO 80265

ATTN: Chris Mitchell/Jeff

Justus #12-15

12-10s-22w. Graham,KS

Start Date: 2013.11.10 @ 09:50:00

End Date: 2013.11.10 @ 18:00:15

Job Ticket #: 55856 DST #: 2

Trilobite Testing, Inc

PO Box 362 Hays, KS 67601

ph: 785-625-4778 fax: 785-625-5620

Printed: 2013.11.15 @ 09:20:37



**TRILOBITE
TESTING, INC**

DRILL STEM TEST REPORT

McElvain Energy Inc.

12-10s-22w. Graham,KS

1050 17 th. St. Ste 2500
Denver CO 80265

Justus #12-15

Job Ticket: 55856

DST#: 2

ATTN: Chris Mitchell/Jeff

Test Start: 2013.11.10 @ 09:50:00

GENERAL INFORMATION:

Formation: **LKC "H-I"**

Deviated: No Whipstock: ft (KB)

Time Tool Opened: 11:53:15

Time Test Ended: 18:00:15

Test Type: Conventional Bottom Hole (Reset)

Tester: Bob Hamel

Unit No: 67

Interval: 3660.00 ft (KB) To 3711.00 ft (KB) (TVD)

Reference Elevations: 2287.00 ft (KB)

Total Depth: 3711.00 ft (KB) (TVD)

2277.00 ft (CF)

Hole Diameter: 7.88 inches Hole Condition: Fair

KB to GR/CF: 10.00 ft

Serial #: 6668

Inside

Press@RunDepth: 48.72 psig @ 3698.00 ft (KB)

Capacity: 8000.00 psig

Start Date: 2013.11.10

End Date:

2013.11.10

Last Calib.:

2013.11.10

Start Time: 09:50:02

End Time:

18:00:15

Time On Btm:

2013.11.10 @ 11:52:45

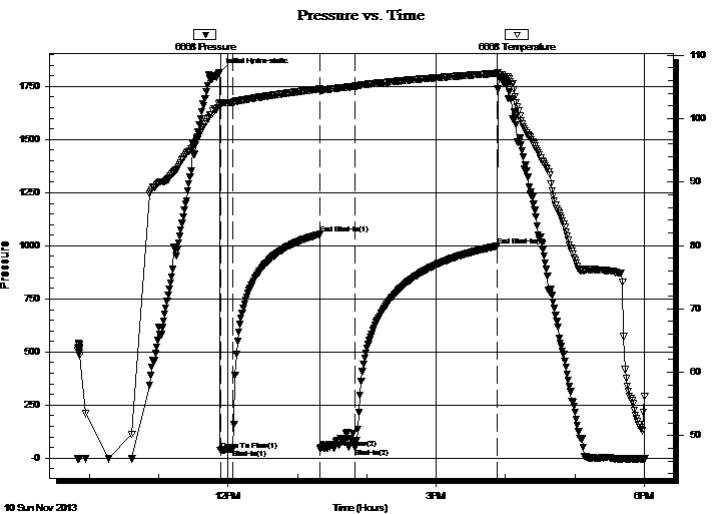
Time Off Btm:

TEST COMMENT: I.F. - 10 - Blow built to 1 1/2 "

I.S.I - 75 - No blow back

F.F. - 30 - Blow started at 7 min built to 1"

F.S.I. - 120 - No blow back



PRESSURE SUMMARY

Time (Min.)	Pressure (psig)	Temp (deg F)	Annotation
0	1816.24	102.50	Initial Hydro-static
1	37.76	101.98	Open To Flow (1)
12	42.14	102.57	Shut-In(1)
87	1054.36	104.66	End Shut-In(1)
87	45.46	104.40	Open To Flow (2)
117	48.72	105.10	Shut-In(2)
240	998.30	107.16	End Shut-In(2)

Recovery

Length (ft)	Description	Volume (bbl)
25.00	OCM 10%OIL 90%MUD	0.12

* Recovery from multiple tests

Gas Rates

Choke (inches)	Pressure (psig)	Gas Rate (Mcf/d)



**TRILOBITE
TESTING, INC**

DRILL STEM TEST REPORT

TOOL DIAGRAM

McElvain Energy Inc.

12-10s-22w. Graham,KS

1050 17 th. St. Ste 2500
Denver CO 80265

Justus #12-15

Job Ticket: 55856

DST#: 2

ATTN: Chris Mitchell/Jeff

Test Start: 2013.11.10 @ 09:50:00

Tool Information

Drill Pipe:	Length: 3636.00 ft	Diameter: 2.25 inches	Volume: 17.88 bbl	Tool Weight: 2500.00 lb
Heavy Wt. Pipe:	Length: 0.00 ft	Diameter: 2.70 inches	Volume: 0.00 bbl	Weight set on Packer: 25000.00 lb
Drill Collar:	Length: 0.00 ft	Diameter: 2.25 inches	Volume: 0.00 bbl	Weight to Pull Loose: 60000.00 lb
			<u>Total Volume: 17.88 bbl</u>	Tool Chased 3.00 ft
Drill Pipe Above KB:	10.00 ft			String Weight: Initial 58000.00 lb
Depth to Top Packer:	3660.00 ft			Final 58000.00 lb
Depth to Bottom Packer:	ft			
Interval between Packers:	51.00 ft			
Tool Length:	85.00 ft			
Number of Packers:	2	Diameter: 6.75 inches		

Tool Comments:

Tool Description	Length (ft)	Serial No.	Position	Depth (ft)	Accum. Lengths
------------------	-------------	------------	----------	------------	----------------

Recorder	0.00	8679	Fluid	3626.00	
Stubb	5.00			3631.00	
Shut In Tool	5.00			3636.00	
Sampler	2.00			3638.00	
Hydraulic tool	5.00			3643.00	
Jars	5.00			3648.00	
Safety Joint	3.00			3651.00	
Packer	4.00			3655.00	34.00 Bottom Of Top Packer
Packer	5.00			3660.00	
Stubb	1.00			3661.00	
Perforations	4.00			3665.00	
Change Over Sub	1.00			3666.00	
Drill Pipe	31.00			3697.00	
Change Over Sub	1.00			3698.00	
Recorder	0.00	6668	Inside	3698.00	
Recorder	0.00	6625	Outside	3698.00	
Perforations	10.00			3708.00	
Bullnose	3.00			3711.00	51.00 Bottom Packers & Anchor

Total Tool Length: 85.00



**TRILOBITE
TESTING, INC**

DRILL STEM TEST REPORT

FLUID SUMMARY

McElvain Energy Inc.

12-10s-22w. Graham,KS

1050 17 th. St. Ste 2500
Denver CO 80265

Justus #12-15

Job Ticket: 55856

DST#: 2

ATTN: Chris Mitchell/Jeff

Test Start: 2013.11.10 @ 09:50:00

Mud and Cushion Information

Mud Type: Gel Chem

Cushion Type:

Oil API:

deg API

Mud Weight: 9.00 lb/gal

Cushion Length:

ft

Water Salinity:

ppm

Viscosity: 56.00 sec/qt

Cushion Volume:

bbbl

Water Loss: 6.38 in³

Gas Cushion Type:

Resistivity: ohm.m

Gas Cushion Pressure:

psig

Salinity: 2400.00 ppm

Filter Cake: 2.00 inches

Recovery Information

Recovery Table

Length ft	Description	Volume bbl
25.00	OCM 10%OIL 90%MUD	0.123

Total Length: 25.00 ft Total Volume: 0.123 bbl

Num Fluid Samples: 0

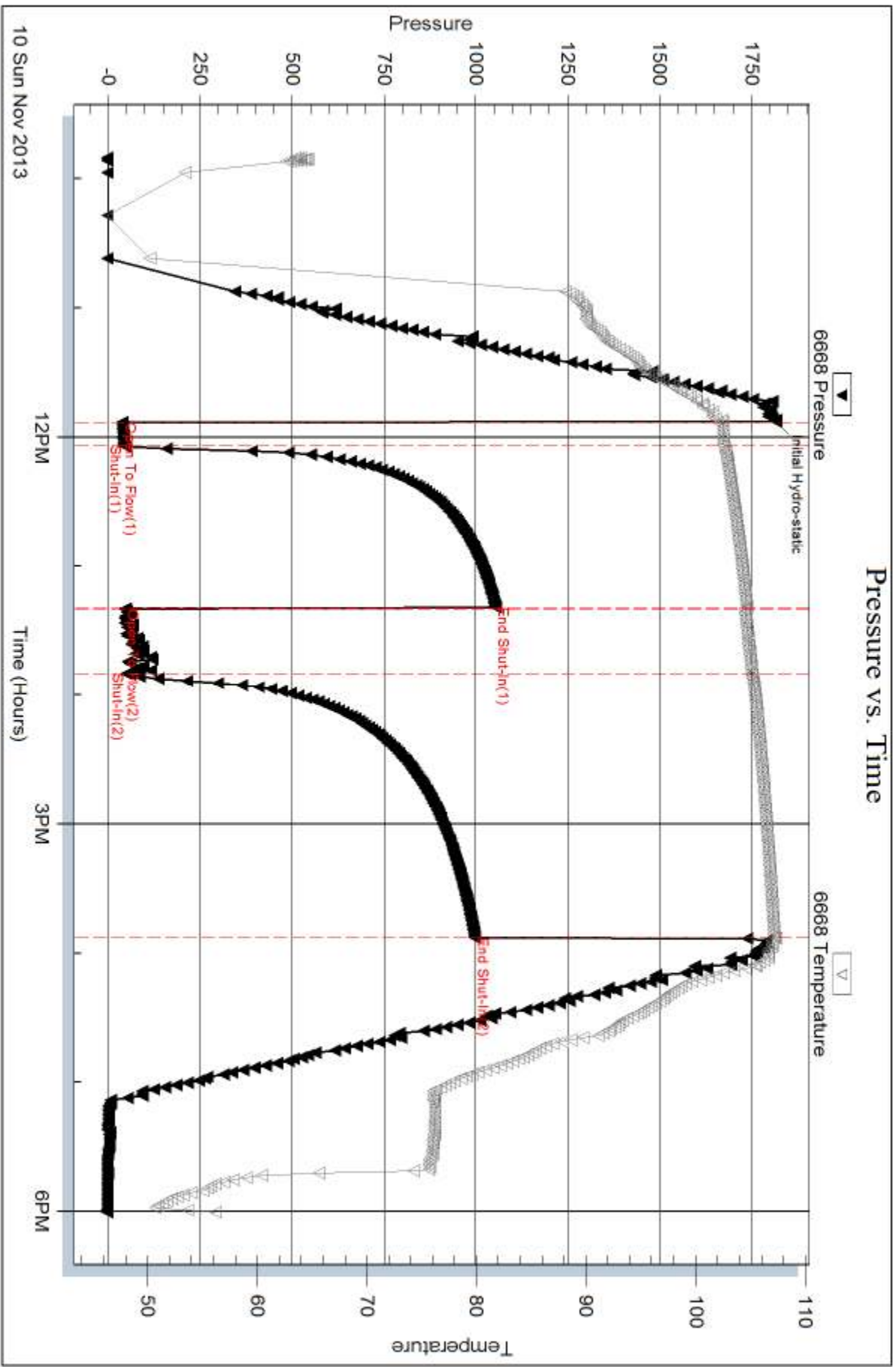
Num Gas Bombs: 0

Serial #:

Laboratory Name:

Laboratory Location:

Recovery Comments: Sampler =.400mL Oil 600mL mud 50psi

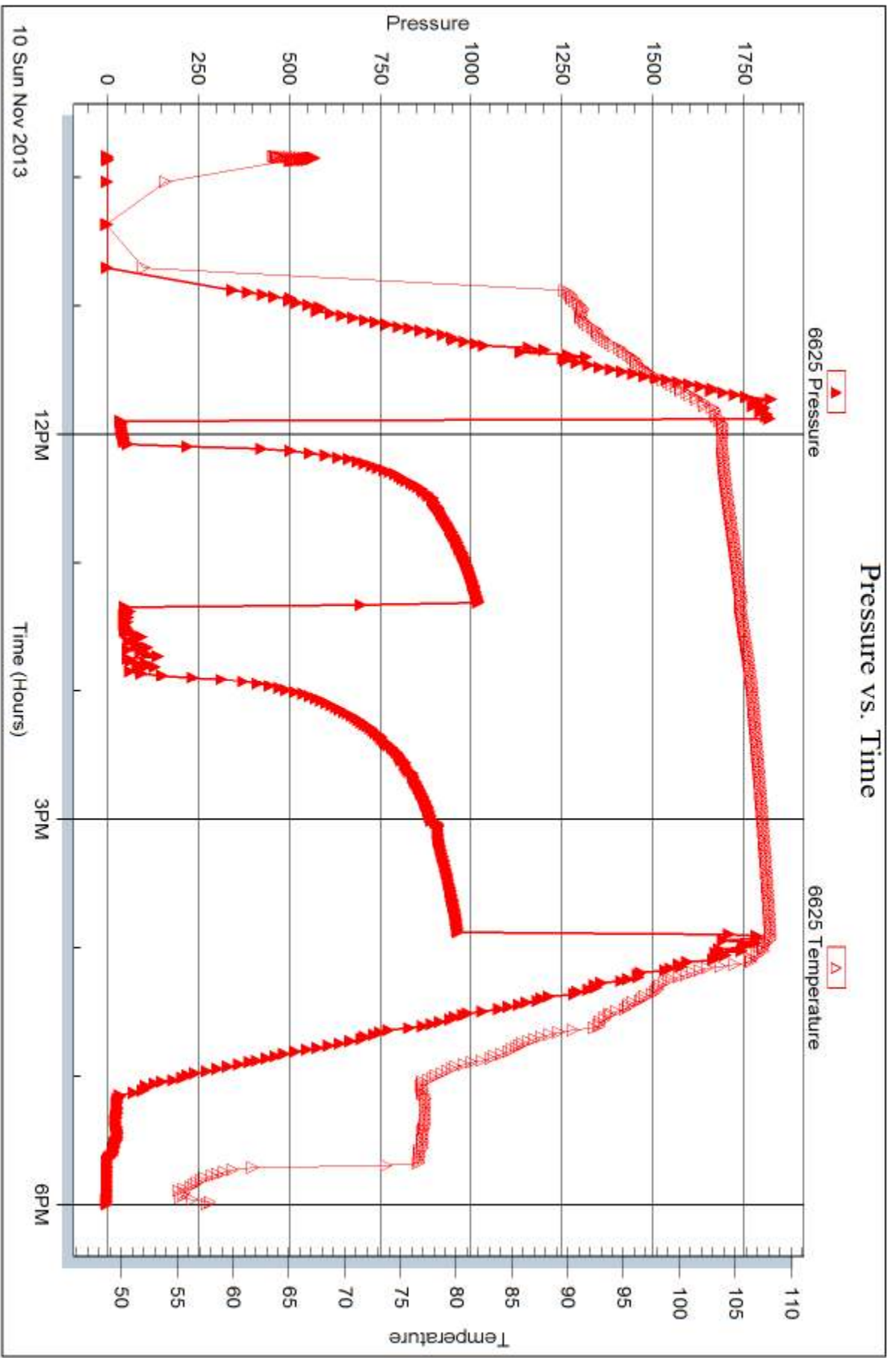


Serial #: 6625

Outside McElvain Energy Inc.

Justus #12-15

DST Test Number: 2



Trikolite Testing, Inc

Ref. No: 55856

Printed: 2013.11.15 @ 09:20:39

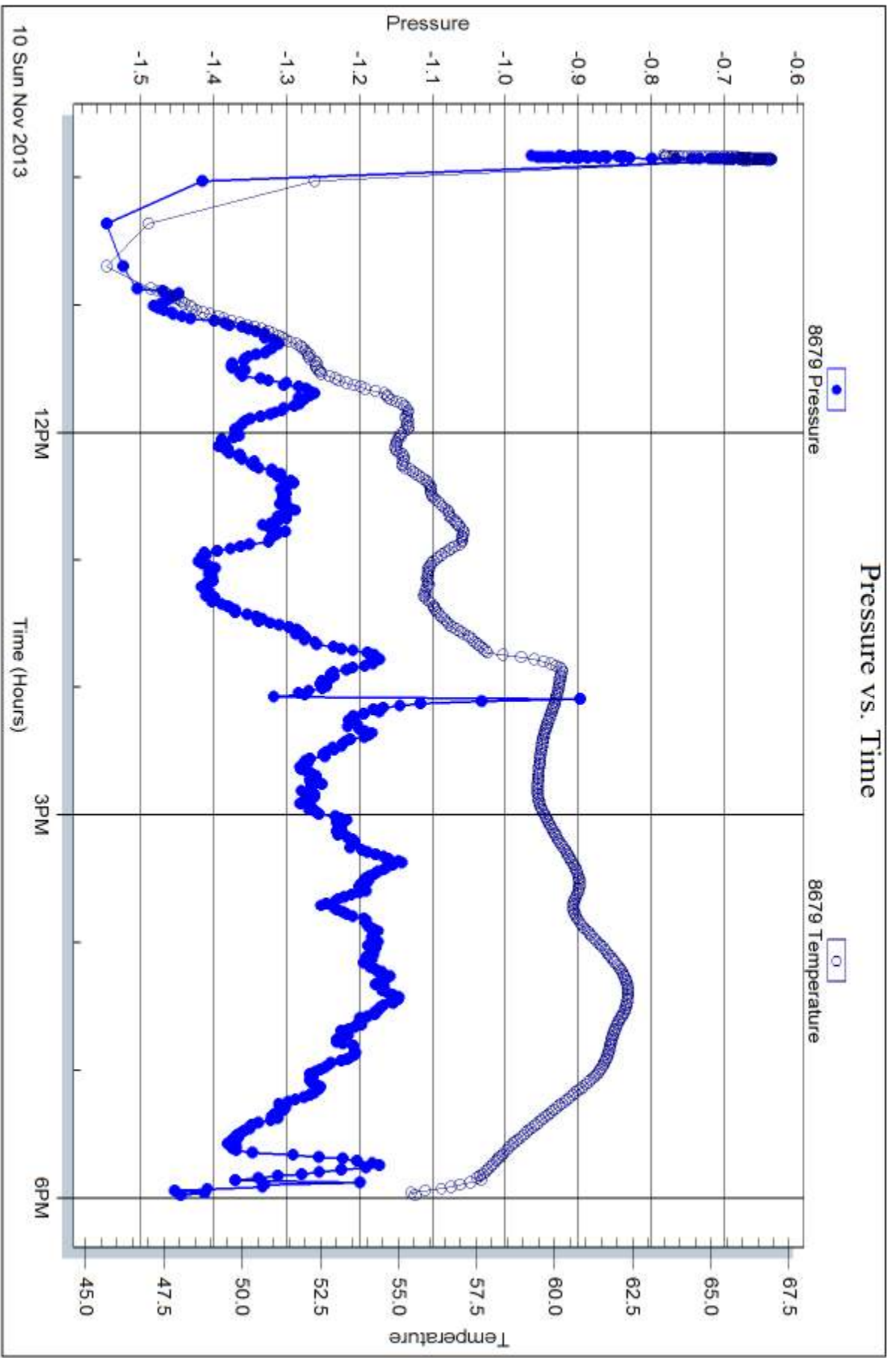
Serial #: 8679

Fluid

McEvain Energy Inc.

Justus #12-15

DST Test Number: 2



Trilobite Testing, Inc

Ref. No: 55856

Printed: 2013.11.15 @ 09:20:39



DRILL STEM TEST REPORT

Prepared For: **McElvain Energy Inc.**

1050 17 th. St. Ste 2500
Denver CO 80265

ATTN: Chris Mitchell/Jeff

Justus #12-15

12-10s-22w. Graham,KS

Start Date: 2013.11.11 @ 02:25:45

End Date: 2013.11.11 @ 10:48:45

Job Ticket #: 039754 DST #: 3

Trilobite Testing, Inc

PO Box 362 Hays, KS 67601

ph: 785-625-4778 fax: 785-625-5620

Printed: 2013.11.15 @ 09:19:43



TRILOBITE TESTING, INC.

DRILL STEM TEST REPORT

McElvain Energy Inc.

12-10s-22w. Graham, KS

1050 17 th. St. Ste 2500
Denver CO 80265

Justus #12-15

Job Ticket: 039754

DST#: 3

ATTN: Chris Mitchell/Jeff

Test Start: 2013.11.11 @ 02:25:45

GENERAL INFORMATION:

Formation: **LKC J-K**

Deviated: No Whipstock: ft (KB)

Time Tool Opened: 05:08:15

Time Test Ended: 10:48:45

Test Type: Conventional Bottom Hole (Reset)

Tester: Jeff Brown

Unit No: 67

Interval: 3707.00 ft (KB) To 3742.00 ft (KB) (TVD)

Reference Elevations: 2287.00 ft (KB)

Total Depth: 3742.00 ft (KB) (TVD)

2277.00 ft (CF)

Hole Diameter: 7.88 inches Hole Condition: Fair

KB to GR/CF: 10.00 ft

Serial #: 6668

Inside

Press@RunDepth: 21.90 psig @ 3712.00 ft (KB)

Capacity: 8000.00 psig

Start Date: 2013.11.11

End Date:

2013.11.11

Last Calib.:

2013.11.11

Start Time:

02:25:47

End Time:

10:46:45

Time On Btm:

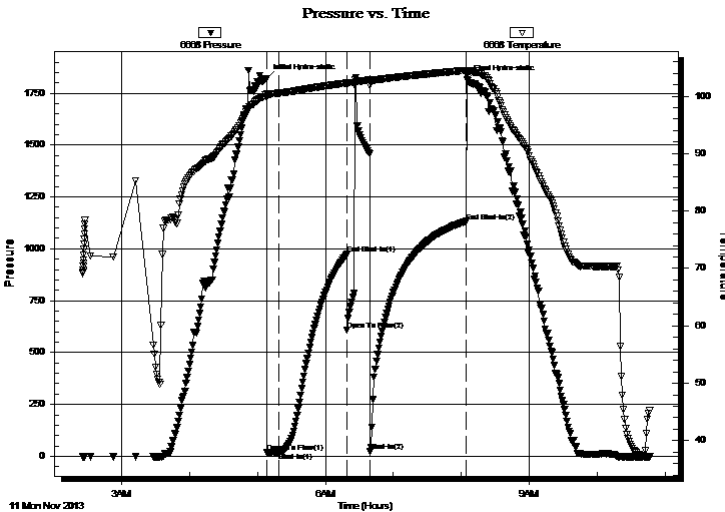
2013.11.11 @ 05:08:00

Time Off Btm:

2013.11.11 @ 08:04:45

TEST COMMENT: IFP=10-min=Weak blow built to 1/2"
IS=60-min=Dead no blow back
FFP=20-min=Dead no blow - Flushed tool - Dead
FS=80-min=Dead no blow back

PRESSURE SUMMARY



Time (Min.)	Pressure (psig)	Temp (deg F)	Annotation
0	1820.00	100.39	Initial Hydro-static
1	18.34	99.69	Open To Flow (1)
11	19.10	100.52	Shut-In(1)
71	973.09	102.28	End Shut-In(1)
71	609.52	102.09	Open To Flow (2)
92	21.90	101.86	Shut-In(2)
176	1132.15	104.49	End Shut-In(2)
177	1814.32	104.48	Final Hydro-static

Recovery

Length (ft)	Description	Volume (bbl)
6.00	Mud with oil spots	0.08

* Recovery from multiple tests

Gas Rates

	Choke (inches)	Pressure (psig)	Gas Rate (Mcf/d)



**TRILOBITE
TESTING, INC**

DRILL STEM TEST REPORT

TOOL DIAGRAM

McElvain Energy Inc.

12-10s-22w. Graham,KS

1050 17 th. St. Ste 2500
Denver CO 80265

Justus #12-15

Job Ticket: 039754

DST#: 3

ATTN: Chris Mitchell/Jeff

Test Start: 2013.11.11 @ 02:25:45

Tool Information

Drill Pipe:	Length: 3690.00 ft	Diameter: 3.80 inches	Volume: 51.76 bbl	Tool Weight: 2500.00 lb
Heavy Wt. Pipe:	Length: 0.00 ft	Diameter: 2.70 inches	Volume: 0.00 bbl	Weight set on Packer: 22000.00 lb
Drill Collar:	Length: 0.00 ft	Diameter: 2.25 inches	Volume: 0.00 bbl	Weight to Pull Loose: 64000.00 lb
			<u>Total Volume: 51.76 bbl</u>	Tool Chased 0.00 ft
Drill Pipe Above KB:	17.00 ft			String Weight: Initial 58000.00 lb
Depth to Top Packer:	3707.00 ft			Final 58000.00 lb
Depth to Bottom Packer:	ft			
Interval between Packers:	35.00 ft			
Tool Length:	69.00 ft			
Number of Packers:	2	Diameter: 6.75 inches		

Tool Comments:

Tool Description	Length (ft)	Serial No.	Position	Depth (ft)	Accum. Lengths
------------------	-------------	------------	----------	------------	----------------

Recorder	0.00	8679	Fluid	3673.00	
Stubb	5.00			3678.00	
Shut In Tool	5.00			3683.00	
Sampler	2.00			3685.00	
Hydraulic tool	5.00			3690.00	
Jars	5.00			3695.00	
Safety Joint	3.00			3698.00	
Packer	4.00			3702.00	34.00 Bottom Of Top Packer
Packer	5.00			3707.00	
Stubb	1.00			3708.00	
Perforations	4.00			3712.00	
Recorder	0.00	6668	Inside	3712.00	
Recorder	0.00	6625	Outside	3712.00	
Perforations	27.00			3739.00	
Bullnose	3.00			3742.00	35.00 Bottom Packers & Anchor

Total Tool Length: 69.00



**TRILOBITE
TESTING, INC**

DRILL STEM TEST REPORT

FLUID SUMMARY

McElvain Energy Inc.

12-10s-22w. Graham,KS

1050 17 th. St. Ste 2500
Denver CO 80265

Justus #12-15

Job Ticket: 039754

DST#: 3

ATTN: Chris Mitchell/Jeff

Test Start: 2013.11.11 @ 02:25:45

Mud and Cushion Information

Mud Type: Gel Chem

Cushion Type:

Oil API:

deg API

Mud Weight: 9.00 lb/gal

Cushion Length:

ft

Water Salinity:

ppm

Viscosity: 55.00 sec/qt

Cushion Volume:

bbbl

Water Loss: 6.78 in³

Gas Cushion Type:

Resistivity: ohm.m

Gas Cushion Pressure:

psig

Salinity: 2600.00 ppm

Filter Cake: 2.00 inches

Recovery Information

Recovery Table

Length ft	Description	Volume bbl
6.00	Mud w ith oil spots	0.084

Total Length: 6.00 ft Total Volume: 0.084 bbl

Num Fluid Samples: 0

Num Gas Bombs: 0

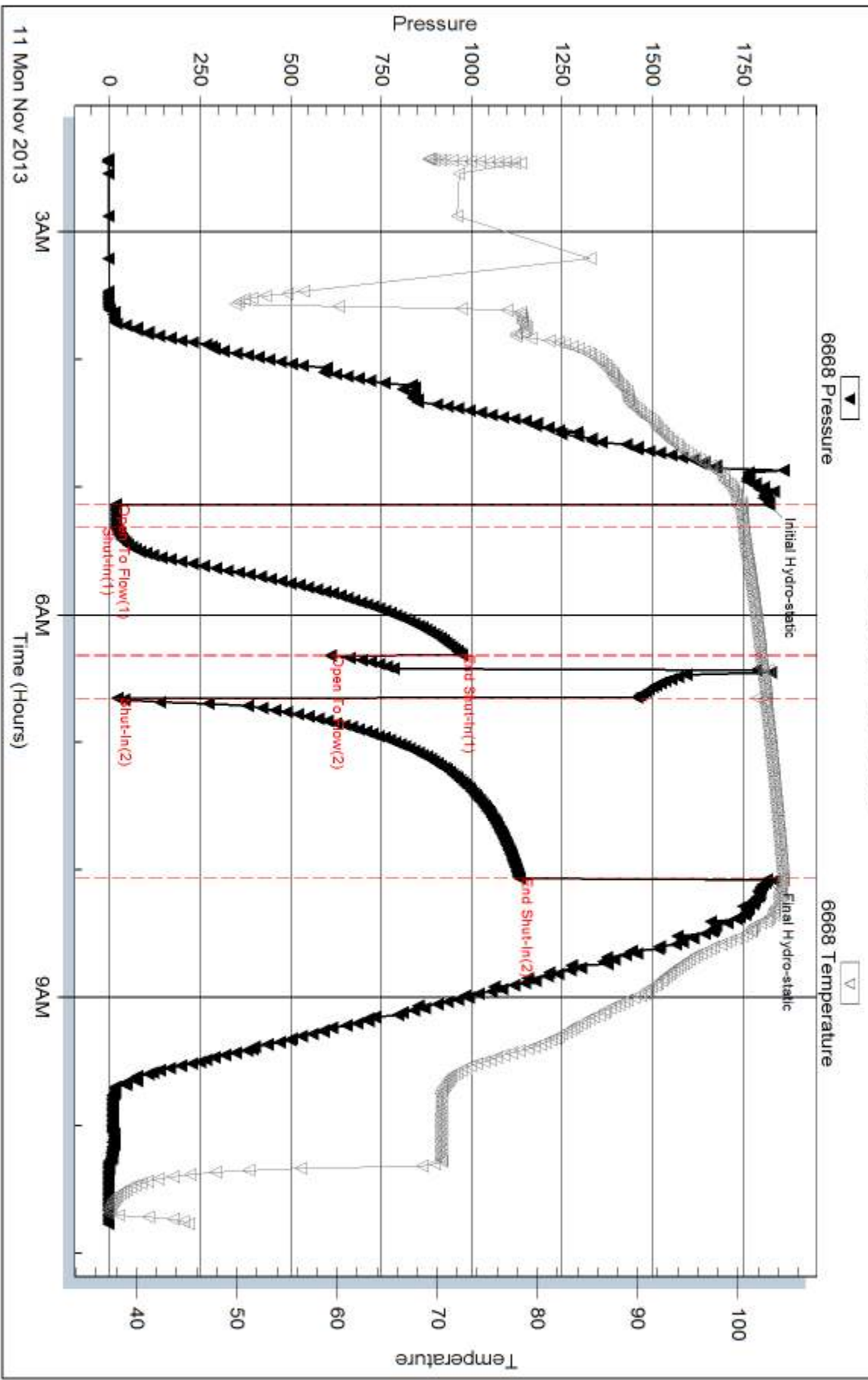
Serial #:

Laboratory Name:

Laboratory Location:

Recovery Comments: 3000 Ml of mud w ith oil spots
30 PSI

Pressure vs. Time



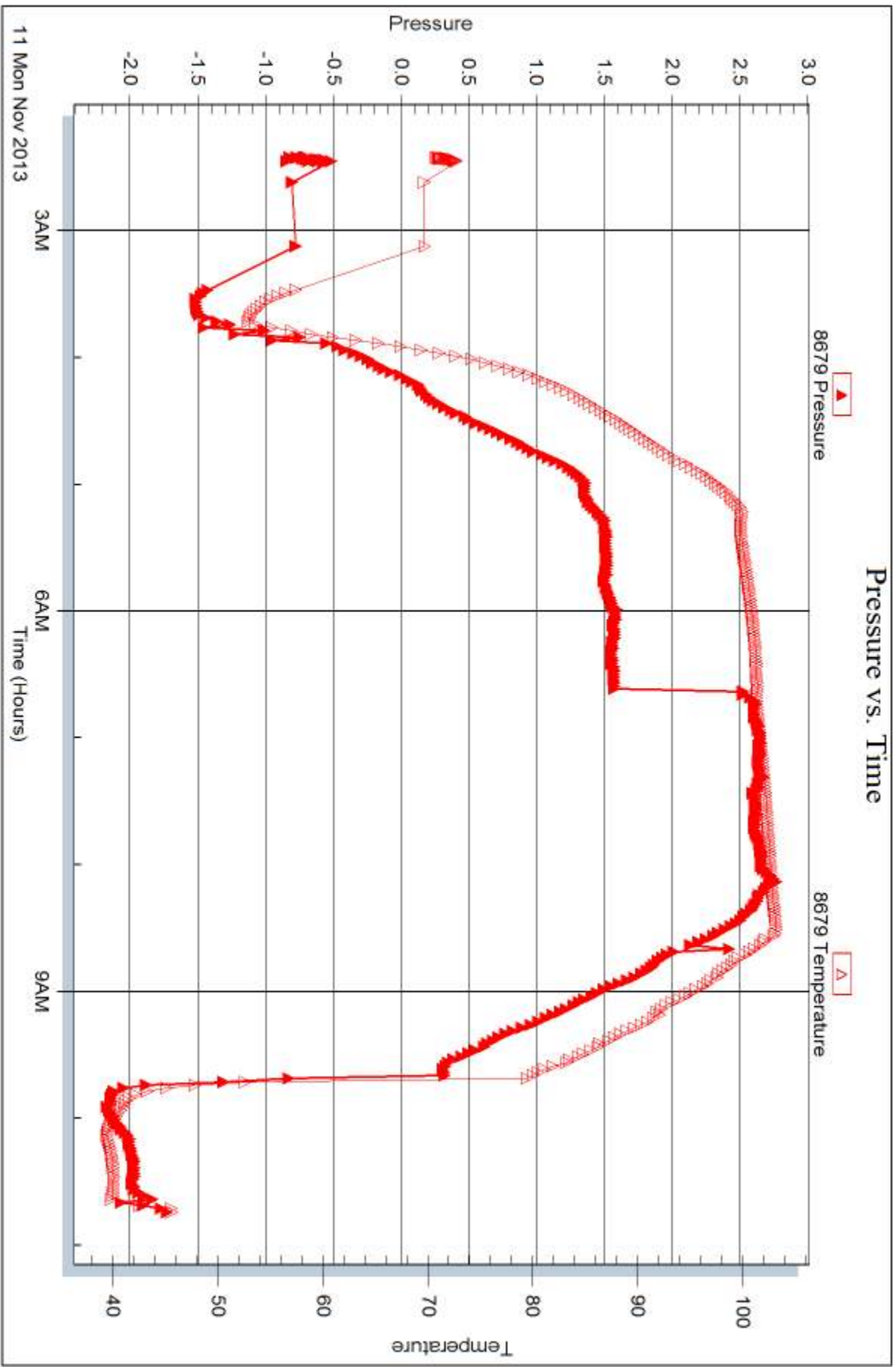
Serial #: 8679

Fluid

McBain Energy Inc.

Justus #12-15

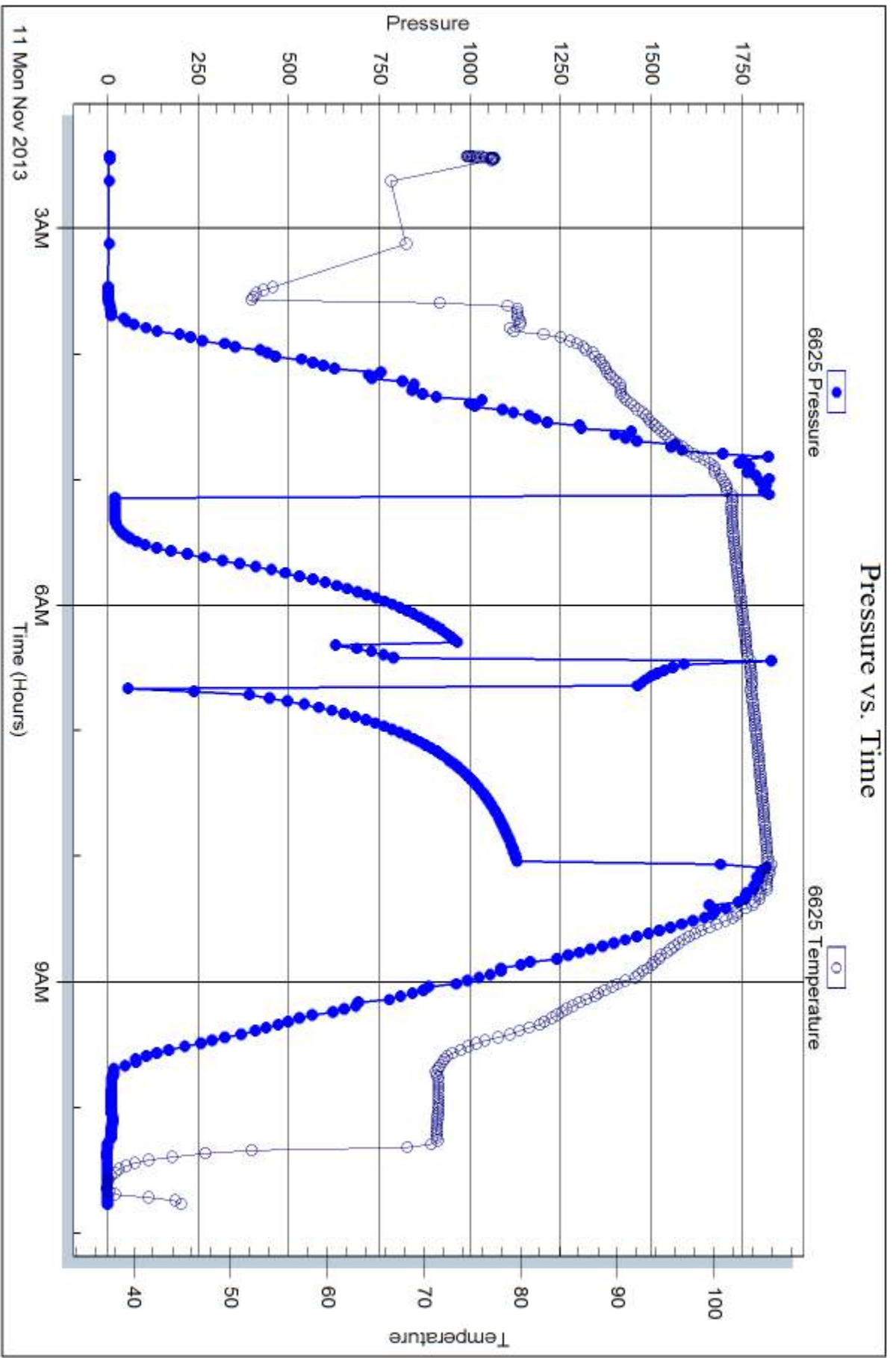
DST Test Number: 3



Trilobite Testing, Inc

Ref. No: 039754

Printed: 2013.11.15 @ 09:19:44





DRILL STEM TEST REPORT

Prepared For: **McElvain Energy Inc.**

1050 17 th. St. Ste 2500
Denver CO 80265

ATTN: Chris Mitchell/Jeff

Justus #12-15

12-10s-22w. Graham,KS

Start Date: 2013.11.12 @ 00:27:07

End Date: 2013.11.12 @ 09:48:37

Job Ticket #: 039755 DST #: 4

Trilobite Testing, Inc
PO Box 362 Hays, KS 67601
ph: 785-625-4778 fax: 785-625-5620

Printed: 2013.11.15 @ 09:19:03



TRILOBITE TESTING, INC

DRILL STEM TEST REPORT

McElvain Energy Inc.

12-10s-22w. Graham, KS

1050 17 th. St. Ste 2500
Denver CO 80265

Justus #12-15

Job Ticket: 039755

DST#: 4

ATTN: Chris Mitchell/Jeff

Test Start: 2013.11.12 @ 00:27:07

GENERAL INFORMATION:

Formation: **Marmaton**

Deviated: No Whipstock: ft (KB)

Time Tool Opened: 03:02:37

Time Test Ended: 09:48:37

Test Type: Conventional Bottom Hole (Reset)

Tester: Jeff Brown

Unit No: 67

Interval: 3824.00 ft (KB) To 3852.00 ft (KB) (TVD)

Reference Elevations: 2287.00 ft (KB)

Total Depth: 3852.00 ft (KB) (TVD)

2277.00 ft (CF)

Hole Diameter: 7.88 inches Hole Condition: Fair

KB to GR/CF: 10.00 ft

Serial #: 6625 Outside

Press@RunDepth: 291.32 psig @ 3828.00 ft (KB)

Capacity: 8000.00 psig

Start Date: 2013.11.12

End Date:

2013.11.12

Last Calib.:

2013.11.12

Start Time: 00:27:08

End Time:

09:41:37

Time On Btm:

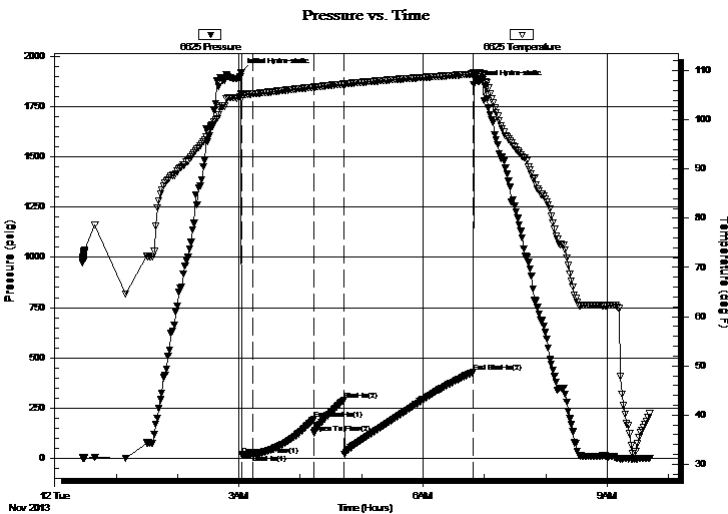
2013.11.12 @ 03:02:07

Time Off Btm:

2013.11.12 @ 06:49:37

TEST COMMENT: IFP=10-min=Weak blow built to 1/2 in
IS=60-min=Dead no blow back
FFP=30-min=Weak surface blow
FS=120-min=Dead no blow back

PRESSURE SUMMARY



Time (Min.)	Pressure (psig)	Temp (deg F)	Annotation
0	1918.92	105.33	Initial Hydro-static
1	18.22	104.48	Open To Flow (1)
12	19.82	105.33	Shut-In(1)
71	195.46	106.68	End Shut-In(1)
72	128.35	106.69	Open To Flow (2)
101	291.32	107.30	Shut-In(2)
227	429.64	109.34	End Shut-In(2)
228	1859.08	109.67	Final Hydro-static

Recovery

Length (ft)	Description	Volume (bbl)
3.00	Mud with oil spots	0.01

* Recovery from multiple tests

Gas Rates

Choke (inches)	Pressure (psig)	Gas Rate (Mcf/d)



TRILOBITE TESTING, INC

DRILL STEM TEST REPORT

McElvain Energy Inc.

12-10s-22w. Graham,KS

1050 17 th. St. Ste 2500
Denver CO 80265

Justus #12-15

Job Ticket: 039755

DST#: 4

ATTN: Chris Mitchell/Jeff

Test Start: 2013.11.12 @ 00:27:07

GENERAL INFORMATION:

Formation: **Marmaton**

Deviated: No Whipstock: ft (KB)

Time Tool Opened: 03:02:37

Time Test Ended: 09:48:37

Test Type: Conventional Bottom Hole (Reset)

Tester: Jeff Brown

Unit No: 67

Interval: 3824.00 ft (KB) To 3852.00 ft (KB) (TVD)

Reference Elevations: 2287.00 ft (KB)

Total Depth: 3852.00 ft (KB) (TVD)

2277.00 ft (CF)

Hole Diameter: 7.88 inches Hole Condition: Fair

KB to GR/CF: 10.00 ft

Serial #: 8679 Fluid

Press@RunDepth: psig @ 3790.00 ft (KB)

Capacity: 8000.00 psig

Start Date: 2013.11.12

End Date:

2013.11.12

Last Calib.:

2013.11.12

Start Time: 00:27:09

End Time:

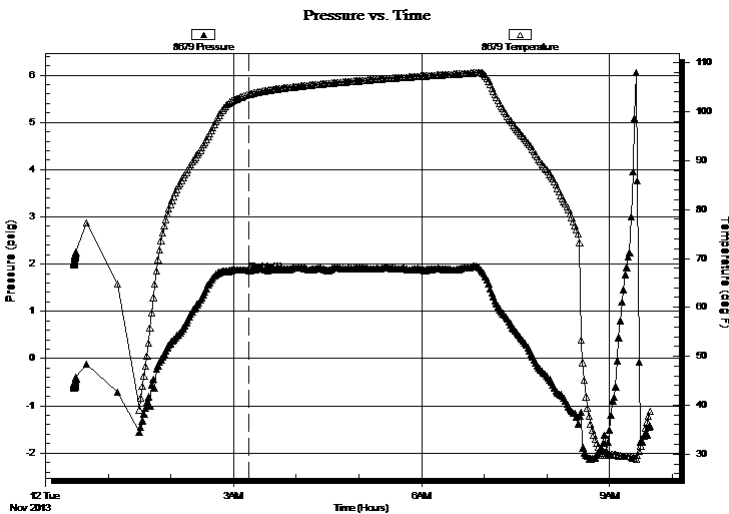
09:39:38

Time On Btm:

Time Off Btm:

TEST COMMENT: IFP=10-min=Weak blow built to 1/2 in
IS=60-min=Dead no blow back
FFP=30-min=Weak surface blow
FS=120-min=Dead no blow back

PRESSURE SUMMARY



Time (Min.)	Pressure (psig)	Temp (deg F)	Annotation
0	1.87	103.50	Shut-In(1)

Recovery

Length (ft)	Description	Volume (bbl)
3.00	Mud w ith oil spots	0.01

Gas Rates

Choke (inches)	Pressure (psig)	Gas Rate (Mcf/d)

* Recovery from multiple tests



**TRILOBITE
TESTING, INC**

DRILL STEM TEST REPORT

TOOL DIAGRAM

McElvain Energy Inc.

12-10s-22w. Graham,KS

1050 17 th. St. Ste 2500
Denver CO 80265

Justus #12-15

Job Ticket: 039755

DST#: 4

ATTN: Chris Mitchell/Jeff

Test Start: 2013.11.12 @ 00:27:07

Tool Information

Drill Pipe:	Length: 3805.00 ft	Diameter: 2.25 inches	Volume: 18.71 bbl	Tool Weight:	2500.00 lb
Heavy Wt. Pipe:	Length: 0.00 ft	Diameter: 2.70 inches	Volume: 0.00 bbl	Weight set on Packer:	2200.00 lb
Drill Collar:	Length: 0.00 ft	Diameter: 2.25 inches	Volume: 0.00 bbl	Weight to Pull Loose:	65000.00 lb
			<u>Total Volume: 18.71 bbl</u>	Tool Chased	0.00 ft
Drill Pipe Above KB:	15.00 ft			String Weight: Initial	58000.00 lb
Depth to Top Packer:	3824.00 ft			Final	59000.00 lb
Depth to Bottom Packer:	ft				
Interval between Packers:	28.00 ft				
Tool Length:	62.00 ft				
Number of Packers:	2	Diameter: 6.75 inches			

Tool Comments:

Tool Description	Length (ft)	Serial No.	Position	Depth (ft)	Accum. Lengths
------------------	-------------	------------	----------	------------	----------------

Recorder	0.00	8679	Fluid	3790.00	
Stubb	5.00			3795.00	
Shut In Tool	5.00			3800.00	
Sampler	2.00			3802.00	
Hydraulic tool	5.00			3807.00	
Jars	5.00			3812.00	
Safety Joint	3.00			3815.00	
Packer	4.00			3819.00	34.00 Bottom Of Top Packer
Packer	5.00			3824.00	
Stubb	1.00			3825.00	
Perforations	3.00			3828.00	
Recorder	0.00	6668	Inside	3828.00	
Recorder	0.00	6625	Outside	3828.00	
Perforations	20.00			3848.00	
Bullnose	4.00			3852.00	28.00 Bottom Packers & Anchor

Total Tool Length: 62.00



**TRILOBITE
TESTING, INC**

DRILL STEM TEST REPORT

FLUID SUMMARY

McElvain Energy Inc.

12-10s-22w. Graham,KS

1050 17 th. St. Ste 2500
Denver CO 80265

Justus #12-15

Job Ticket: 039755

DST#: 4

ATTN: Chris Mitchell/Jeff

Test Start: 2013.11.12 @ 00:27:07

Mud and Cushion Information

Mud Type: Gel Chem

Cushion Type:

Oil API:

deg API

Mud Weight: 9.00 lb/gal

Cushion Length:

ft

Water Salinity:

ppm

Viscosity: 52.00 sec/qt

Cushion Volume:

bbbl

Water Loss: 7.19 in³

Gas Cushion Type:

Resistivity: ohm.m

Gas Cushion Pressure:

psig

Salinity: 2300.00 ppm

Filter Cake: inches

Recovery Information

Recovery Table

Length ft	Description	Volume bbl
3.00	Mud w ith oil spots	0.015

Total Length: 3.00 ft Total Volume: 0.015 bbl

Num Fluid Samples: 0

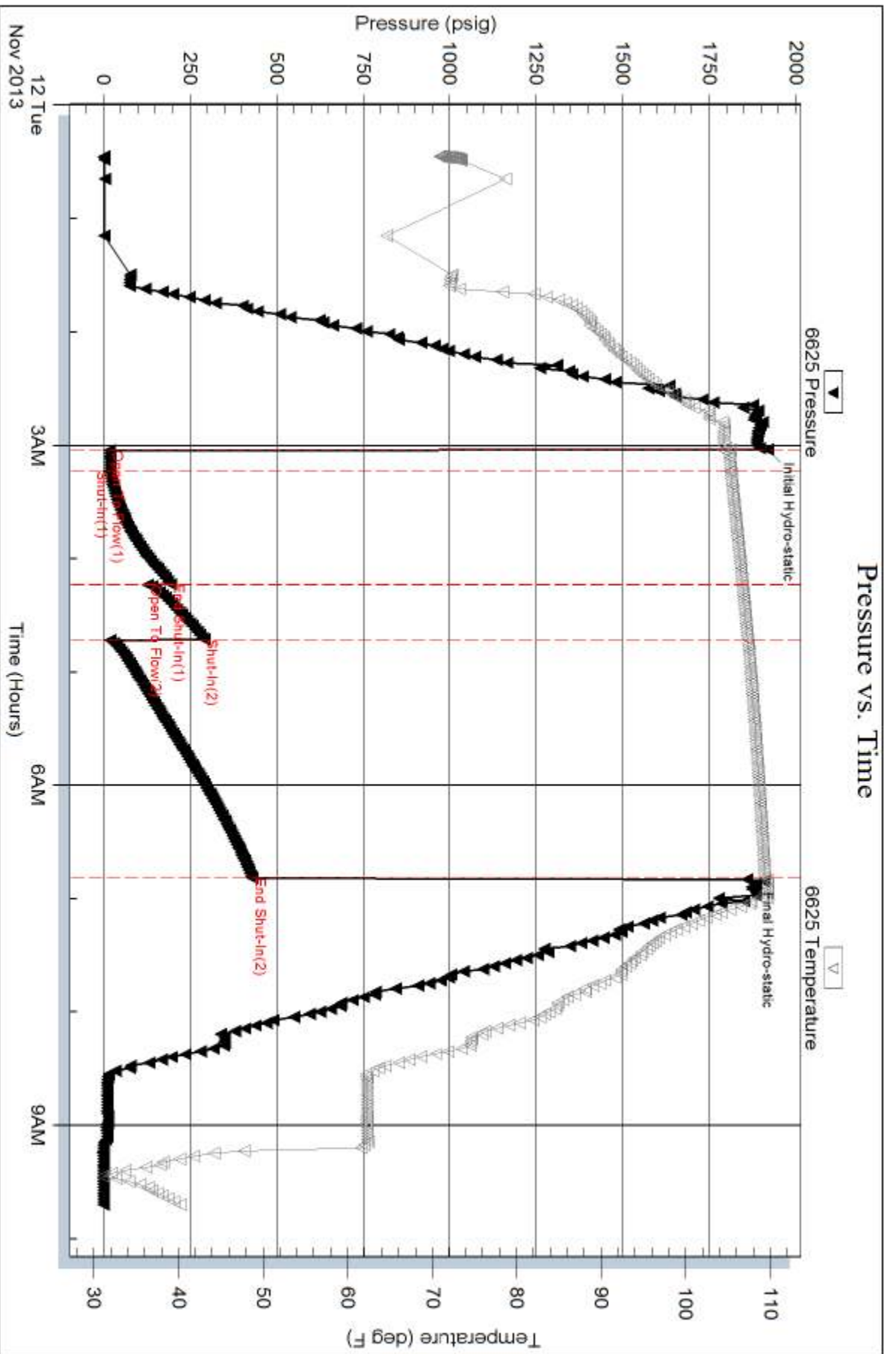
Num Gas Bombs: 0

Serial #:

Laboratory Name:

Laboratory Location:

Recovery Comments: 3000 ML of Mud w ith oil spots
40 PSI



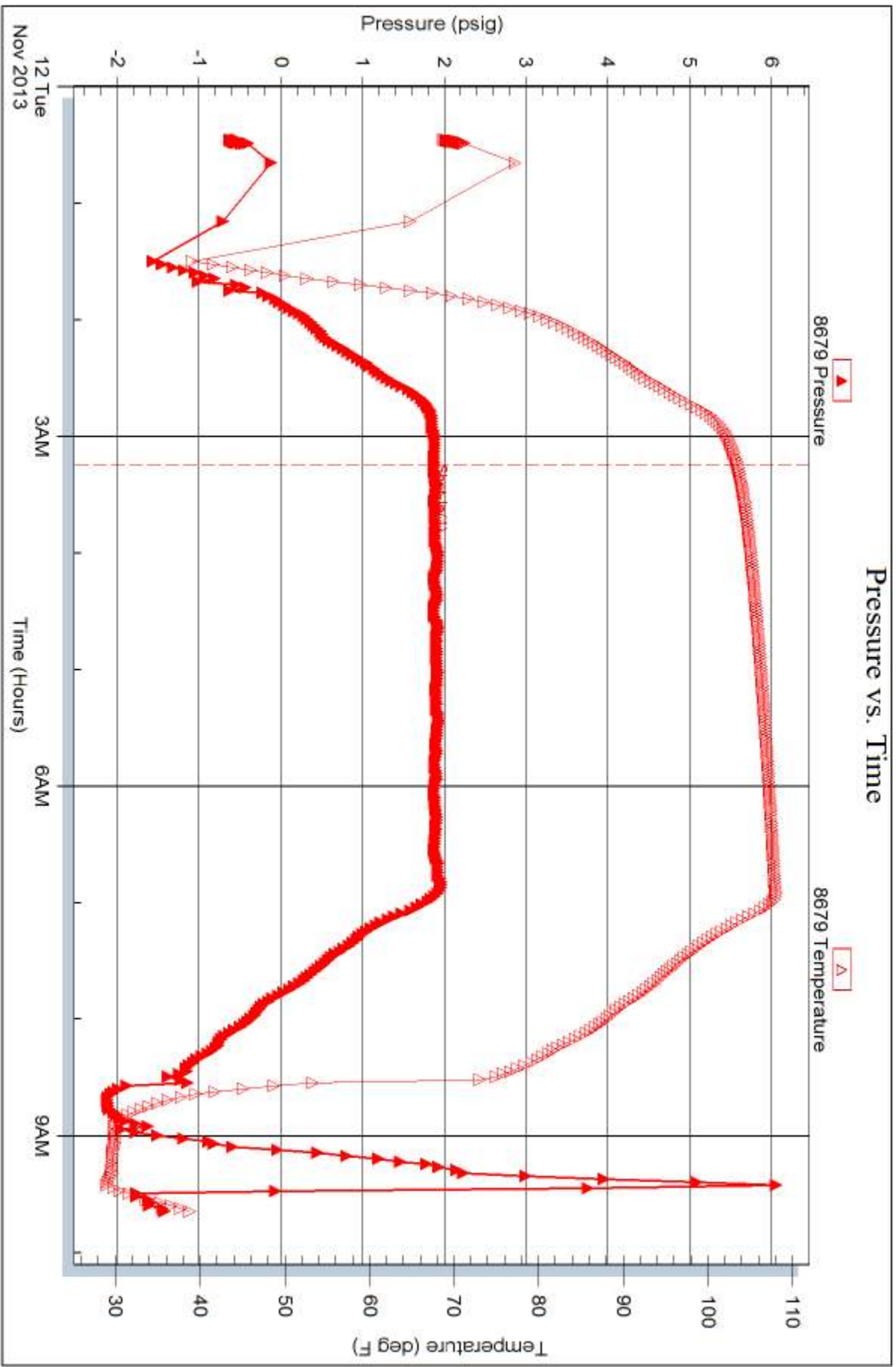
Serial #: 8679

Fluid

McBvain Energy Inc.

Justus #12-15

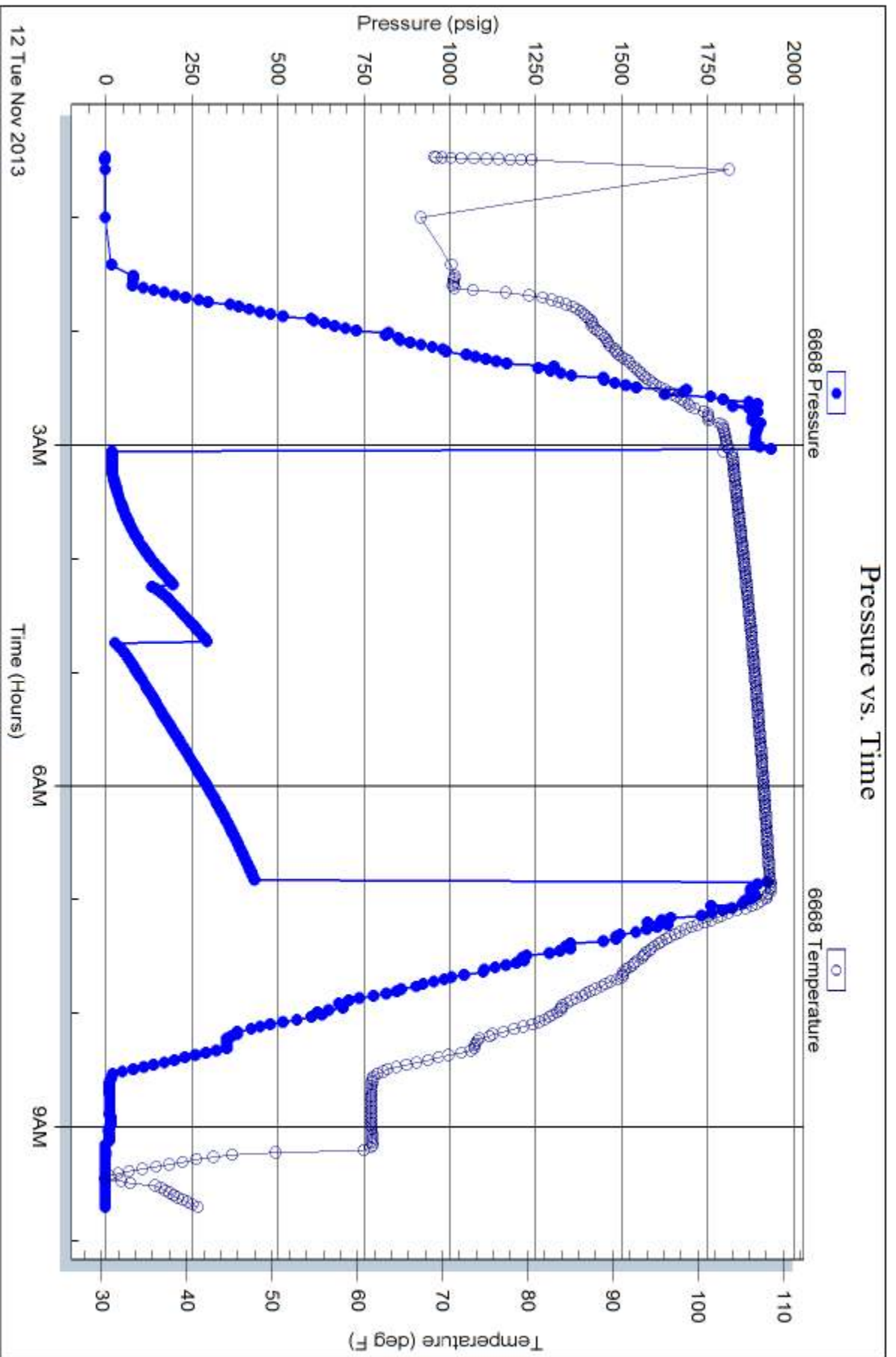
DST Test Number: 4



Tribble Testing, Inc

Ref. No: 039755

Printed: 2013.11.15 @ 09:19:05





TRILOBITE TESTING INC.

1515 Commerce Parkway • Hays, Kansas 67601

Test Ticket

NO. **55855**

Well Name & No. Justus #12-15 Test No. 1 Date 11-9-2013
 Company McElvain Energy INC. Elevation 2287 KB 2277 GL
 Address 1050 17th St. Suite 2500 Denver CO, 80265
 Co. Rep / Geo. Chris Mitchell / Jeff Beindel Rig Val Energy Rig #6
 Location: Sec. 12 Twp. 10-5 Rge. 22-W Co. Graham State KS.

Interval Tested 3529-3598 Zone Tested Lans. "A+C"
 Anchor Length 69' Drill Pipe Run 3505 Mud Wt. 9.0
 Top Packer Depth 3524 Drill Collars Run --- Vis 55
 Bottom Packer Depth 3529 Wt. Pipe Run --- WL 5.4
 Total Depth 3598 Chlorides 2,400 ppm System LCM 1

Blow Description I.F.-10-1/4 INT. Blow Built to (1 1/2" in 10 min.)

I.S.I-75- No B.B.

F.F.-30- 1/4 INT. Blow Built to (6 1/2" in 30 min.)

F.S.I-120- No B.B.

Rec	Feet of	%gas	%oil	%water	%mud
<u>20</u>	<u>GIP 40'</u>	<u>100</u>			
<u>20</u>	<u>HOCM</u>		<u>20</u>		<u>80</u>
<u>63</u>	<u>HGOCM</u>	<u>20</u>	<u>20</u>		<u>60</u>

Rec Total 83 BHT 107 Gravity --- API RW --- @ --- °F Chlorides --- ppm

- (A) Initial Hydrostatic 1,750
- (B) First Initial Flow 36
- (C) First Final Flow 49
- (D) Initial Shut-In 749
- (E) Second Initial Flow 51
- (F) Second Final Flow 72
- (G) Final Shut-In 722
- (H) Final Hydrostatic 1,717

- Test 1150
- Jars 250
- Safety Joint 75
- Circ Sub
- Hourly Standby
- Mileage 96 Rt. 148.80
- Sampler 250
- Straddle
- Shale Packer 250
- Extra Packer
- Extra Recorder
- Day Standby
- Accessibility
- Sub Total 2123.80

T-On Location 06:45:00
 T-Started 08:35:00
 T-Open 11:13:00
 T-Pulled 15:08:00
 T-Out 19:02:00

Comments "thank-you"

- Ruined Shale Packer
- Ruined Packer
- Extra Copies
- Sub Total 0
- Total 2123.80
- MP/DST Disc't

Initial Open 10
 Initial Shut-In 75
 Final Flow 30
 Final Shut-In 120

Approved By _____ Our Representative Bob Horn

TriLOBITE TESTING INC. shall not be liable for damaged of any kind of the property or personnel of the one for whom a test is made, or for any loss suffered or sustained, directly or indirectly, through the use of its equipment, or its statements or opinion concerning the results of any test, tools lost or damaged in the hole shall be paid for at cost by the party for whom the test is made.



TRILOBITE TESTING, INC.

P.O. Box 362 • Hays, Kansas 67601

FLUID SAMPLER DATA

Ticket No. SS855 Date 11-9-2013
 Company Name Mc Elvain Energy TNE
 Lease Latus #12-15 Test No. 1
 County Graham Sec. 12 Twp. 10-S Rng. 22-W

SAMPLER RECOVERY

Gas _____ ML
 Oil 400 ML
 Mud 1200 ML
 Water _____ ML
 Other _____ ML
 Pressure 60 ML
 Total 1600 ML

PIT MUD ANALYSIS

Chlorides 2,400 ppm.
 Resistivity — ohms @ — F
 Viscosity 55
 Mud Weight 9.0
 Filtrate 5.4
 Other _____
1600 ML Holm 3080 708M

SAMPLER ANALYSIS

Resistivity _____ ohms @ _____ F
 Chlorides _____ ppm.
 Gravity _____ corrected @60F

PIPE RECOVERY

TOP
 Resistivity _____ ohms @ _____ F
 Chlorides _____ ppm.
MIDDLE
 Resistivity _____ ohms @ _____ F
 Chlorides _____ ppm.
BOTTOM
 Resistivity _____ ohms @ _____ F
 Chlorides _____ ppm.



TRILOBITE TESTING INC.

1515 Commerce Parkway • Hays, Kansas 67601

Test Ticket

NO. **55856**

Well Name & No. Justus #12-15 Test No. 2 Date 11-10-2013
 Company McElvain Energy INC. Elevation 2287 KB 2277 GL
 Address 1050 17th St, Suite 2500 Denver CO. 80265
 Co. Rep / Geo. Chris Mitchell / Jeff Reindel Rig Val Energy Rig #6
 Location: Sec. 12 Twp. 10-S Rge. 22-W Co. Graham State KS.

Interval Tested 3660-3711 Zone Tested hans "H-I"
 Anchor Length 51 Drill Pipe Run 3,636 Mud Wt. 9.3
 Top Packer Depth 3655 Drill Collars Run — Vis 56
 Bottom Packer Depth 3660 Wt. Pipe Run — WL 6.4
 Total Depth 3711 Chlorides 2,400 ppm System LCM 1

Blow Description I.F-10-1/4 INT. Blow Built to (1 1/2 in 10 Min.)
I.S.I-75- No B.B.
F.F.-30- No INT. Blow Built to (1 in 30 min.)
F.S.I-120- No B.B.

Rec	Feet of	%gas	%oil	%water	%mud
<u>25</u>	<u>OCM</u>	<u>10</u>		<u>90</u>	
Rec	Feet of	%gas	%oil	%water	%mud
Rec	Feet of	%gas	%oil	%water	%mud
Rec	Feet of	%gas	%oil	%water	%mud
Rec	Feet of	%gas	%oil	%water	%mud

Rec Total 25 BHT 107 Gravity _____ API RW _____ @ _____ °F Chlorides _____ ppm

(A) Initial Hydrostatic 1,876 Test 1150 T-On Location 09:15:00
 (B) First Initial Flow 38 Jars 250 T-Started 09:50:00
 (C) First Final Flow 42 Safety Joint 75 T-Open 11:53:00
 (D) Initial Shut-In 1,054 Circ Sub _____ T-Pulled 15:48:00
 (E) Second Initial Flow 45 Hourly Standby _____ T-Out 18:00:00
 (F) Second Final Flow 49 Mileage 148.80 Comments _____
 (G) Final Shut-In 998 Sampler 250 "thank-you"
 (H) Final Hydrostatic 1,799 Straddle _____ Ruined Shale Packer _____
 Shale Packer 250 Ruined Packer _____

Initial Open 10 Extra Packer _____ Extra Copies _____
 Initial Shut-In 75 Extra Recorder _____ Sub Total 0
 Final Flow 30 Day Standby _____ Total 2123.80
 Final Shut-In 120 Accessibility _____ MP/DST Disc't _____
 Sub Total 2123.80

Approved By _____ Our Representative Butt

Trilobite Testing Inc. shall not be liable for damaged of any kind of the property or personnel of the one for whom a test is made, or for any loss suffered or sustained, directly or indirectly, through the use of its equipment, or its statements or opinion concerning the results of any test, tools lost or damaged in the hole shall be paid for at cost by the party for whom the test is made.



TRILOBITE TESTING, INC.

P.O. Box 362 • Hays, Kansas 67601

FLUID SAMPLER DATA

Ticket No. SS856 Date 11-10-2013
 Company Name Mc Elvain Energy INC.
 Lease Justus #12-15 Test No. 2
 County Graham Sec. 12 Twp. 10-S Rng. 22-W

SAMPLER RECOVERY

Gas _____ ML
 Oil 400 ML
 Mud 600 ML
 Water _____ ML
 Other D,C,M. 15% O 85% M ML
 Pressure 50 ML
 Total 1,000 M.L ML

PIT MUD ANALYSIS

Chlorides 2,400 ppm.
 Resistivity — ohms @ — F
 Viscosity 56
 Mud Weight 9.3
 Filtrate 6.4
 Other _____

SAMPLER ANALYSIS

Resistivity _____ ohms @ _____ F
 Chlorides _____ ppm.
 Gravity _____ corrected @60F

PIPE RECOVERY

TOP
 Resistivity _____ ohms @ _____ F
 Chlorides _____ ppm.
MIDDLE
 Resistivity _____ ohms @ _____ F
 Chlorides _____ ppm.
BOTTOM
 Resistivity _____ ohms @ _____ F
 Chlorides _____ ppm.



TRILOBITE TESTING INC.

P.O. Box 1733 • Hays, Kansas 67601

Test Ticket

NO. 039754

4/10

Well Name & No. JUSTUS #12-15 Test No. 3 Date 11-11-13
 Company McELVain Energy INC Elevation 2287 KB 2277 GL
 Address 1050 17th ST Suite 2500 Denver Co. 80205
 Co. Rep / Geo. Chris Mitchell Rig VAL #6
 Location: Sec. 12 Twp. 10 S Rge. 22 W Co. Graham State KS

Interval Tested 3707-3742 Zone Tested Lansing J & K
 Anchor Length 35' Drill Pipe Run 3290 Mud Wt. 9.4
 Top Packer Depth 3702 Drill Collars Run 0 Vis 55
 Bottom Packer Depth 3707 Wt. Pipe Run 0 WL 6.8
 Total Depth 3742 Chlorides 2600 ppm System LCM 1

Blow Description FF-Weak Blow Built To 1/2 IN
ISI-Dead No Blow Back
FF-Dead - Flushed Tool - Dead
ISI-Dead No Blow Back

Rec	Feet of	%gas	%oil	%water	%mud
<u>6</u>	<u>Mud with oil spots</u>			<u>100%</u>	
Rec	Feet of	%gas	%oil	%water	%mud
Rec	Feet of	%gas	%oil	%water	%mud
Rec	Feet of	%gas	%oil	%water	%mud

Rec Total 6 BHT 104 Gravity _____ API RW _____ @ _____ °F Chlorides _____ ppm

(A) Initial Hydrostatic <u>1820</u>	<input checked="" type="checkbox"/> Test 1150	T-On Location <u>2:05</u>
(B) First Initial Flow <u>18</u>	<input checked="" type="checkbox"/> Jars 250	T-Started <u>2:25</u>
(C) First Final Flow <u>19</u>	<input checked="" type="checkbox"/> Safety Joint 75	T-Open <u>5:09</u>
(D) Initial Shut-In <u>973</u>	<input type="checkbox"/> Circ Sub	T-Pulled <u>7:59</u>
(E) Second Initial Flow <u>610</u>	<input type="checkbox"/> Hourly Standby	T-Out <u>10:48</u>
(F) Second Final Flow <u>22</u>	<input checked="" type="checkbox"/> Mileage 148.80	Comments <u>3000 ML of mud with</u>
(G) Final Shut-In <u>1132</u>	<input checked="" type="checkbox"/> Sampler 250	<u>0.1 spots - 30 PSI</u>
(H) Final Hydrostatic <u>1814</u>	<input type="checkbox"/> Straddle	<input type="checkbox"/> Ruined Shale Packer
Initial Open <u>10</u>	<input type="checkbox"/> Shale Packer	<input type="checkbox"/> Ruined Packer
Initial Shut-In <u>600</u>	<input type="checkbox"/> Extra Packer	<input type="checkbox"/> Extra Copies
Final Flow <u>20</u>	<input checked="" type="checkbox"/> Extra Recorder 200	Sub Total <u>0</u>
Final Shut-In <u>80</u>	<input type="checkbox"/> Day Standby	Total <u>2073.80</u>
	<input type="checkbox"/> Accessibility	MP/DST Disc't _____
	Sub Total <u>2073.80</u>	

Approved By _____ Our Representative Jeff Brown

Trilobite Testing Inc. shall not be liable for damaged of any kind of the property or personnel of the one for whom a test is made, or for any loss suffered or sustained, directly or indirectly, through the use of its equipment, or its statements or opinion concerning the results of any test, tools lost or damaged in the hole shall be paid for at cost by the party for whom the test is made.



TRILOBITE TESTING INC.

P.O. Box 1733 • Hays, Kansas 67601

Test Ticket

NO. 039755

Well Name & No. JUSTUS #12-15 Test No. 4 Date 11-11-13
 Company McELVain Energy INC Elevation 2287 KB 2277 GL
 Address 1050 17th ST Suite 2500 Denver Co 80265
 Co. Rep / Geo. Chris Mitchell Rig Val #4
 Location: Sec. 12 Twp. 10S Rge. 22W Co. Graham State KS

Interval Tested 3824-3852 Zone Tested Marmaton
 Anchor Length 28 Drill Pipe Run 3805 Mud Wt. 9.3
 Top Packer Depth 3819 Drill Collars Run 0 Vis 52
 Bottom Packer Depth 3824 Wt. Pipe Run 0 WL 7.2
 Total Depth 3852 Chlorides 2300 ppm System LCM 2300

Blow Description FP-Weak Blow Built to 1/2 IN
1st-Dead No Blow Back
FP-Weak Surface Blow
1st-Dead No Blow Back

Rec	Feet of	%gas	%oil	%water	%mud
<u>3</u>	<u>Mud with oil SPOT'S</u>				
Rec	Feet of	%gas	%oil	%water	%mud
Rec	Feet of	%gas	%oil	%water	%mud
Rec	Feet of	%gas	%oil	%water	%mud
Rec	Feet of	%gas	%oil	%water	%mud

Rec Total 3 BHT 109 Gravity _____ API RW _____ @ _____ °F Chlorides _____ ppm

(A) Initial Hydrostatic 1919
 (B) First Initial Flow 18
 (C) First Final Flow 20
 (D) Initial Shut-In 195
 (E) Second Initial Flow 128
 (F) Second Final Flow 291
 (G) Final Shut-In 430
 (H) Final Hydrostatic 1859

Test 1150
 Jars 250
 Safety Joint 75
 Circ Sub
 Hourly Standby
 Mileage 297.60
 Sampler 250
 Straddle
 Shale Packer
 Extra Packer
 Extra Recorder 200
 Day Standby
 Accessibility
 Sub Total 2222.60

T-On Location 23:20
 T-Started 00:27
 T-Open 3:03
 T-Pulled 8:43
 T-Out 9:48

Comments 3000 ML of Mud with Oil SPOTS - 40 PSI
 Ruined Shale Packer
 Ruined Packer Loaded Tool
 Extra Copies @ 7.24 on
 Sub Total 0 11-13-13
 Total 222.60
 MP/DST Disc't _____

Initial Open 10
 Initial Shut-In 60
 Final Flow 30
 Final Shut-In 120

Approved By _____ Our Representative Jeff Brown

TriLOBite Testing Inc. shall not be liable for damaged of any kind of the property or personnel of the one for whom a test is made, or for any loss suffered or sustained, directly or indirectly, through the use of its equipment, or its statements or opinion concerning the results of any test, tools lost or damaged in the hole shall be paid for at cost by the party for whom the test is made.