



DRILL STEM TEST REPORT

Prepared For: **American Warrior Inc**

PO Box 399
Garden City KS 67846

ATTN: Jason Alm

EHT #1-17

7-18s-21w Ness,KS

Start Date: 2013.12.09 @ 01:20:49

End Date: 2013.12.09 @ 07:45:19

Job Ticket #: 55847 DST #: 1

Trilobite Testing, Inc
PO Box 362 Hays, KS 67601
ph: 785-625-4778 fax: 785-625-5620

Printed: 2013.12.11 @ 15:27:14



**TRILOBITE
TESTING, INC**

DRILL STEM TEST REPORT

American Warrior Inc
PO Box 399
Garden City KS 67846
ATTN: Jason Alm

7-18s-21w Ness, KS

EHT #1-17

Job Ticket: 55847

DST#: 1

Test Start: 2013.12.09 @ 01:20:49

GENERAL INFORMATION:

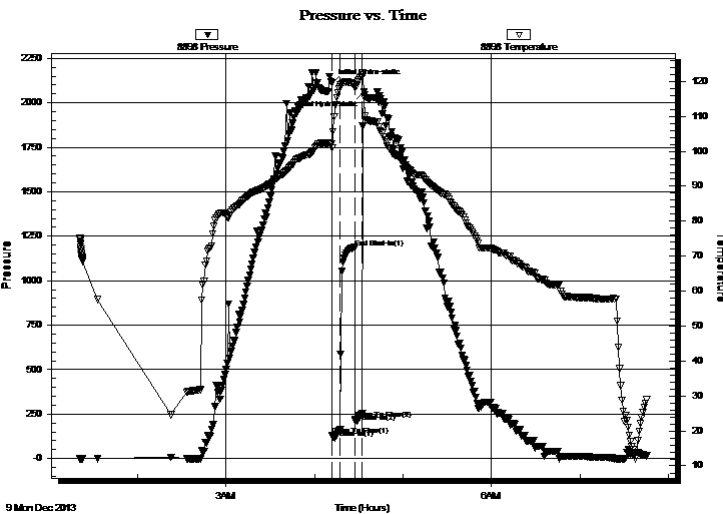
Formation: **Cher. "A" Sand**
 Deviated: No Whipstock: ft (KB)
 Time Tool Opened: 04:11:59
 Time Test Ended: 07:45:19
 Interval: **4207.00 ft (KB) To 4240.00 ft (KB) (TVD)**
 Total Depth: 4240.00 ft (KB) (TVD)
 Hole Diameter: 7.88 inches Hole Condition: Good
 Test Type: Conventional Bottom Hole (Initial)
 Tester: Tate Lang
 Unit No: 49
 Reference Elevations: 2203.00 ft (KB)
 2197.00 ft (CF)
 KB to GR/CF: 6.00 ft

Serial #: 8898

Outside

Press@RunDepth: 164.79 psig @ 4208.00 ft (KB)
 Start Date: 2013.12.09 End Date: 2013.12.09
 Start Time: 01:20:50 End Time: 07:45:19
 Capacity: 8000.00 psig
 Last Calib.: 2013.12.09
 Time On Btm: 2013.12.09 @ 04:11:49
 Time Off Btm: 2013.12.09 @ 04:33:29

TEST COMMENT: B.O.B. In 1 min
 Strong surface blow back built to 7"
 B.O.B. In 1 min
 pulled it



PRESSURE SUMMARY

Time (Min.)	Pressure (psig)	Temp (deg F)	Annotation
0	2110.33	102.21	Initial Hydro-static
1	128.66	100.94	Open To Flow (1)
6	164.79	118.57	Shut-In(1)
16	1185.70	119.02	End Shut-In(1)
16	219.30	118.46	Open To Flow (2)
21	254.26	121.37	Shut-In(2)
22	2060.46	115.70	Final Hydro-static

Recovery

Length (ft)	Description	Volume (bbl)
117.00	5%G 20%O 75%M	0.58
62.00	10%G 40%O 50%M	0.87
496.00	25%G 75%O	6.96
10.00	50%G 50%O	0.14
0.00	670 GIP	0.00

Gas Rates

	Choke (inches)	Pressure (psig)	Gas Rate (Mcf/d)



**TRILOBITE
TESTING, INC.**

DRILL STEM TEST REPORT

American Warrior Inc
PO Box 399
Garden City KS 67846
ATTN: Jason Alm

7-18s-21w Ness,KS

EHT #1-17

Job Ticket: 55847

DST#: 1

Test Start: 2013.12.09 @ 01:20:49

GENERAL INFORMATION:

Formation: **Cher. "A" Sand**

Deviated: No Whipstock: ft (KB)

Time Tool Opened: 04:11:59

Time Test Ended: 07:45:19

Interval: 4207.00 ft (KB) To 4240.00 ft (KB) (TVD)

Total Depth: 4240.00 ft (KB) (TVD)

Hole Diameter: 7.88 inches Hole Condition: Good

Test Type: Conventional Bottom Hole (Initial)

Tester: Tate Lang

Unit No: 49

Reference Elevations: 2203.00 ft (KB)

2197.00 ft (CF)

KB to GR/CF: 6.00 ft

Serial #: 8897

Inside

Press@RunDepth: psig @ 4208.00 ft (KB)

Start Date: 2013.12.09

End Date:

2013.12.09

Start Time: 01:20:45

End Time:

07:45:24

Capacity: 8000.00 psig

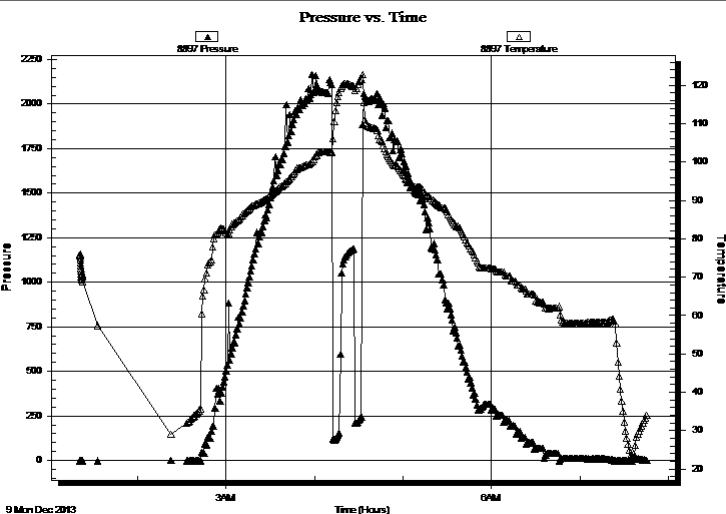
Last Calib.:

2013.12.09

Time On Btm:

Time Off Btm:

TEST COMMENT: B.O.B. In 1 min
Strong surface blow back built to 7"
B.O.B. In 1 min
pulled it



PRESSURE SUMMARY

Time (Min.)	Pressure (psig)	Temp (deg F)	Annotation

Recovery

Length (ft)	Description	Volume (bbl)
117.00	5%G 20%O 75%M	0.58
62.00	10%G 40%O 50%M	0.87
496.00	25%G 75%O	6.96
10.00	50%G 50%O	0.14
0.00	670 GIP	0.00

Gas Rates

	Choke (inches)	Pressure (psig)	Gas Rate (Mcf/d)



**TRILOBITE
TESTING, INC**

DRILL STEM TEST REPORT

TOOL DIAGRAM

American Warrior Inc
PO Box 399
Garden City KS 67846
ATTN: Jason Alm

7-18s-21w Ness,KS
EHT #1-17
Job Ticket: 55847 **DST#: 1**
Test Start: 2013.12.09 @ 01:20:49

Tool Information

Drill Pipe:	Length: 4069.00 ft	Diameter: 3.80 inches	Volume: 57.08 bbl	Tool Weight: 2200.00 lb
Heavy Wt. Pipe:	Length: 0.00 ft	Diameter: 0.00 inches	Volume: 0.00 bbl	Weight set on Packer: 25000.00 lb
Drill Collar:	Length: 117.00 ft	Diameter: 2.25 inches	Volume: 0.58 bbl	Weight to Pull Loose: 80000.00 lb
		Total Volume: 57.66 bbl		Tool Chased 0.00 ft
Drill Pipe Above KB:	6.00 ft			String Weight: Initial 62000.00 lb
Depth to Top Packer:	4207.00 ft			Final 62000.00 lb
Depth to Bottom Packer:	ft			
Interval between Packers:	33.00 ft			
Tool Length:	60.00 ft			
Number of Packers:	2	Diameter: 6.75 inches		

Tool Comments:

Tool Description	Length (ft)	Serial No.	Position	Depth (ft)	Accum. Lengths
------------------	-------------	------------	----------	------------	----------------

Shut In Tool	5.00			4185.00	
Hydraulic tool	5.00			4190.00	
Jars	5.00			4195.00	
Safety Joint	2.00			4197.00	
Packer	5.00			4202.00	27.00 Bottom Of Top Packer
Packer	5.00			4207.00	
Stubb	1.00			4208.00	
Recorder	0.00	8897	Inside	4208.00	
Recorder	0.00	8898	Outside	4208.00	
Perforations	29.00			4237.00	
Bullnose	3.00			4240.00	33.00 Bottom Packers & Anchor

Total Tool Length: 60.00



**TRILOBITE
TESTING, INC**

DRILL STEM TEST REPORT

FLUID SUMMARY

American Warrior Inc
PO Box 399
Garden City KS 67846
ATTN: Jason Alm

7-18s-21w Ness,KS
EHT #1-17
Job Ticket: 55847 **DST#: 1**
Test Start: 2013.12.09 @ 01:20:49

Mud and Cushion Information

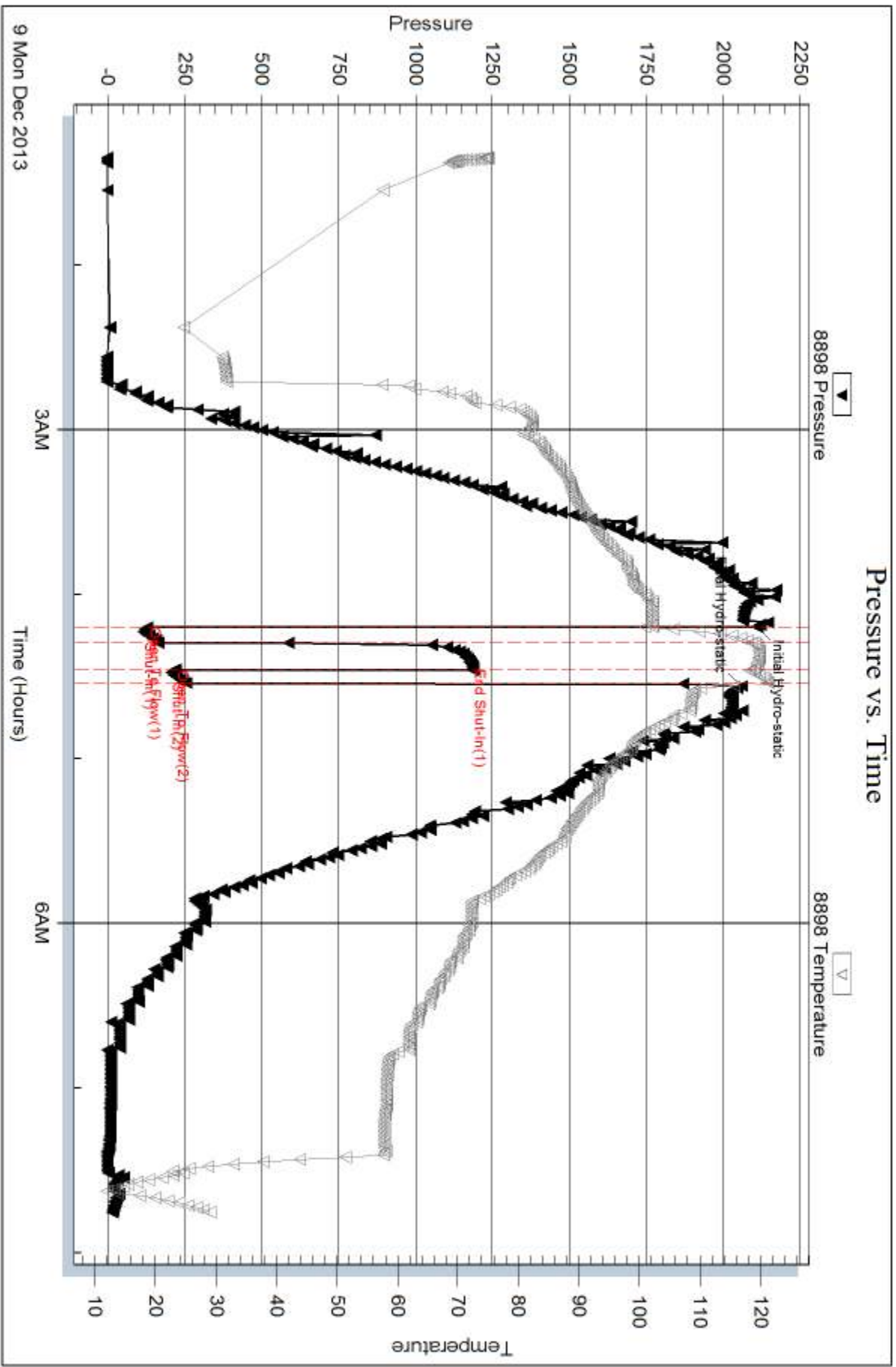
Mud Type: Gel Chem	Cushion Type:	Oil API: 35 deg API
Mud Weight: 9.00 lb/gal	Cushion Length: ft	Water Salinity: ppm
Viscosity: 59.00 sec/qt	Cushion Volume: bbl	
Water Loss: 7.19 in ³	Gas Cushion Type:	
Resistivity: ohm.m	Gas Cushion Pressure: psig	
Salinity: 4200.00 ppm		
Filter Cake: 1.00 inches		

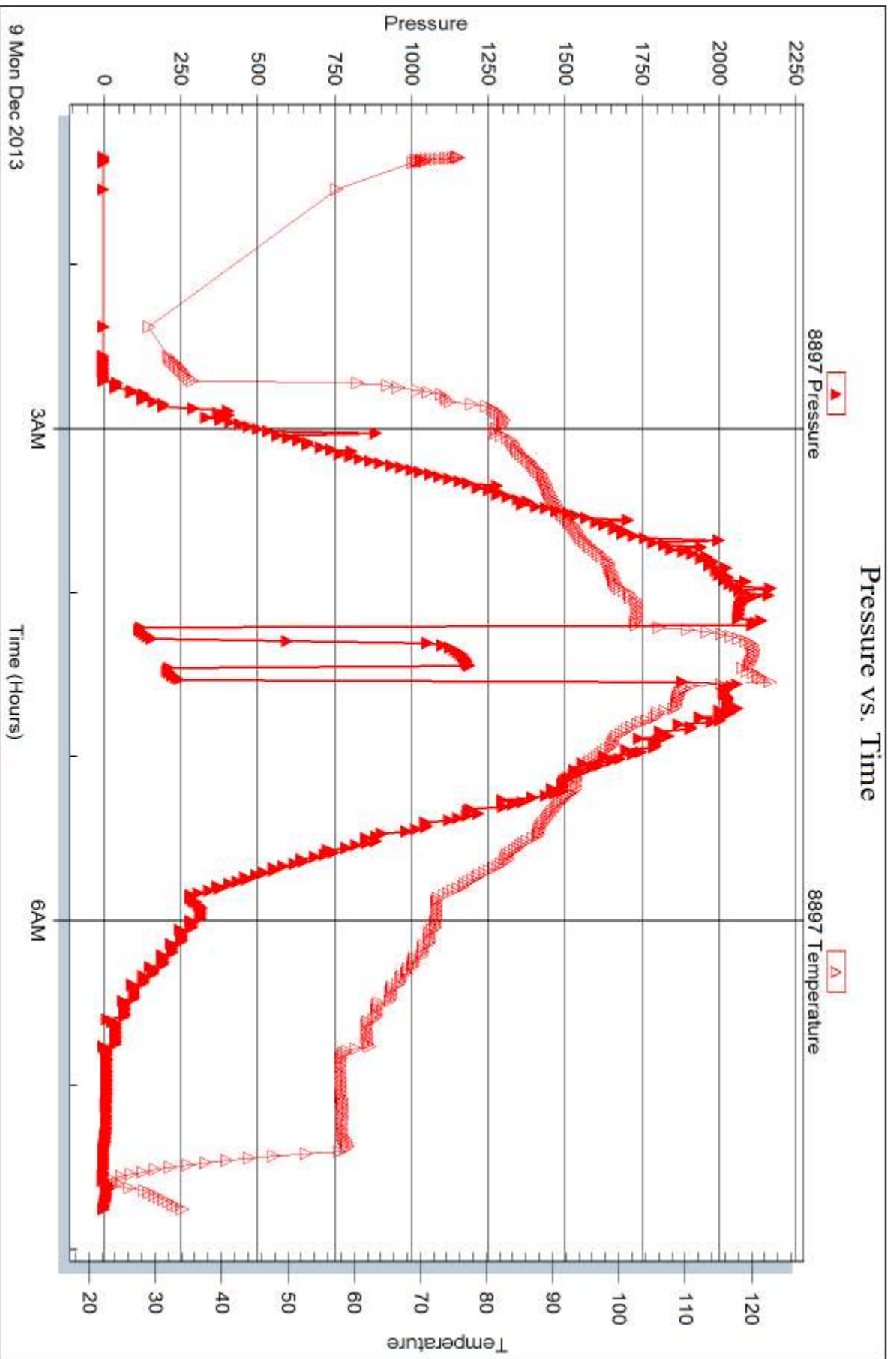
Recovery Information

Recovery Table

Length ft	Description	Volume bbl
117.00	5%G 20%O 75%M	0.575
62.00	10%G 40%O 50%M	0.870
496.00	25%G 75%O	6.958
10.00	50%G 50%O	0.140
0.00	670 GIP	0.000

Total Length: 685.00 ft Total Volume: 8.543 bbl
Num Fluid Samples: 0 Num Gas Bombs: 0 Serial #:
Laboratory Name: Laboratory Location:
Recovery Comments:







DRILL STEM TEST REPORT

Prepared For: **American Warrior Inc**

PO Box 399
Garden City KS 67846

ATTN: Jason Alm

EHT #1-17

7-18s-21w Ness,KS

Start Date: 2013.12.09 @ 18:40:49

End Date: 2013.12.10 @ 02:10:28

Job Ticket #: 55848 DST #: 2

Trilobite Testing, Inc
PO Box 362 Hays, KS 67601
ph: 785-625-4778 fax: 785-625-5620

Printed: 2013.12.11 @ 15:26:24



TRILOBITE TESTING, INC

DRILL STEM TEST REPORT

American Warrior Inc
 PO Box 399
 Garden City KS 67846
 ATTN: Jason Alm

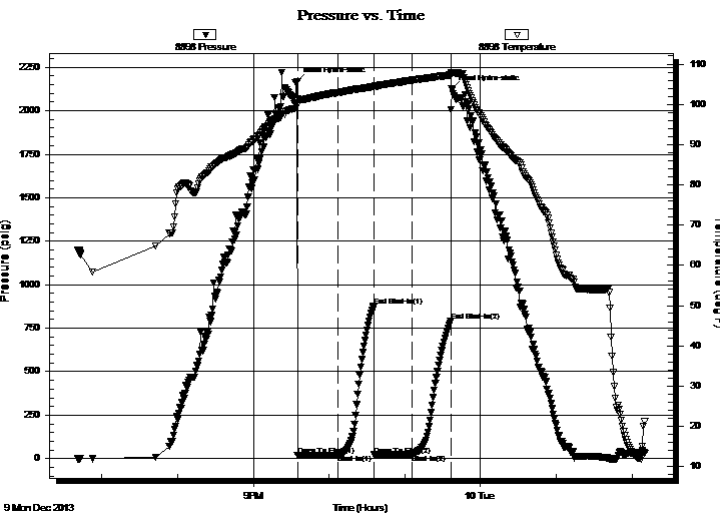
7-18s-21w Ness, KS
EHT #1-17
 Job Ticket: 55848 **DST#: 2**
 Test Start: 2013.12.09 @ 18:40:49

GENERAL INFORMATION:

Formation: **Miss.**
 Deviated: No Whipstock: ft (KB)
 Time Tool Opened: 21:34:59
 Time Test Ended: 02:10:28
 Interval: **4294.00 ft (KB) To 4308.00 ft (KB) (TVD)**
 Total Depth: 4308.00 ft (KB) (TVD)
 Hole Diameter: 7.88 inches Hole Condition: Good
 Test Type: Conventional Bottom Hole (Reset)
 Tester: Tate Lang
 Unit No: 49
 Reference Elevations: 2203.00 ft (KB)
 2197.00 ft (CF)
 KB to GR/CF: 6.00 ft

Serial #: 8898 Outside
 Press@RunDepth: 24.64 psig @ 4295.00 ft (KB) Capacity: 8000.00 psig
 Start Date: 2013.12.09 End Date: 2013.12.10 Last Calib.: 2013.12.10
 Start Time: 18:40:50 End Time: 02:10:29 Time On Btm: 2013.12.09 @ 21:34:49
 Time Off Btm: 2013.12.09 @ 23:37:09

TEST COMMENT: Weak surface blow built to 2"
 Dead noblow back
 Weak surface blow built to 1/4"
 Dead no blow back



PRESSURE SUMMARY

Time (Min.)	Pressure (psig)	Temp (deg F)	Annotation
0	2167.71	101.28	Initial Hydro-static
1	16.86	100.06	Open To Flow (1)
33	22.36	102.90	Shut-In(1)
61	876.57	104.38	End Shut-In(1)
61	20.95	104.24	Open To Flow (2)
92	24.64	106.00	Shut-In(2)
122	789.40	107.28	End Shut-In(2)
123	2125.08	107.84	Final Hydro-static

Recovery

Length (ft)	Description	Volume (bbl)
5.00	100%M With oil spots	0.02

* Recovery from multiple tests

Gas Rates

Choke (inches)	Pressure (psig)	Gas Rate (Mcf/d)



**TRILOBITE
TESTING, INC**

DRILL STEM TEST REPORT

TOOL DIAGRAM

American Warrior Inc
PO Box 399
Garden City KS 67846
ATTN: Jason Alm

7-18s-21w Ness, KS
EHT #1-17
Job Ticket: 55848 **DST#: 2**
Test Start: 2013.12.09 @ 18:40:49

Tool Information

Drill Pipe:	Length: 4160.00 ft	Diameter: 3.80 inches	Volume: 58.35 bbl	Tool Weight:	2200.00 lb
Heavy Wt. Pipe:	Length: 0.00 ft	Diameter: 0.00 inches	Volume: 0.00 bbl	Weight set on Packer:	25000.00 lb
Drill Collar:	Length: 117.00 ft	Diameter: 2.25 inches	Volume: 0.58 bbl	Weight to Pull Loose:	70000.00 lb
			<u>Total Volume: 58.93 bbl</u>	Tool Chased	0.00 ft
Drill Pipe Above KB:	10.00 ft			String Weight: Initial	62000.00 lb
Depth to Top Packer:	4294.00 ft			Final	62000.00 lb
Depth to Bottom Packer:	ft				
Interval between Packers:	14.00 ft				
Tool Length:	41.00 ft				
Number of Packers:	2	Diameter: 6.75 inches			

Tool Comments:

Tool Description	Length (ft)	Serial No.	Position	Depth (ft)	Accum. Lengths
-------------------------	--------------------	-------------------	-----------------	-------------------	-----------------------

Shut In Tool	5.00			4272.00	
Hydraulic tool	5.00			4277.00	
Jars	5.00			4282.00	
Safety Joint	2.00			4284.00	
Packer	5.00			4289.00	27.00 Bottom Of Top Packer
Packer	5.00			4294.00	
Stubb	1.00			4295.00	
Recorder	0.00	8897	Inside	4295.00	
Recorder	0.00	8898	Outside	4295.00	
Perforations	10.00			4305.00	
Bullnose	3.00			4308.00	14.00 Bottom Packers & Anchor

Total Tool Length: 41.00



**TRILOBITE
TESTING, INC**

DRILL STEM TEST REPORT

FLUID SUMMARY

American Warrior Inc

7-18s-21w Ness,KS

PO Box 399
Garden City KS 67846

EHT #1-17

Job Ticket: 55848

DST#: 2

ATTN: Jason Alm

Test Start: 2013.12.09 @ 18:40:49

Mud and Cushion Information

Mud Type: Gel Chem

Cushion Type:

Oil API:

deg API

Mud Weight: 9.00 lb/gal

Cushion Length: ft

Water Salinity: ppm

Viscosity: 51.00 sec/qt

Cushion Volume: bbl

Water Loss: 8.79 in³

Gas Cushion Type:

Resistivity: ohm.m

Gas Cushion Pressure: psig

Salinity: 6700.00 ppm

Filter Cake: 1.00 inches

Recovery Information

Recovery Table

Length ft	Description	Volume bbl
5.00	100%M With oil spots	0.025

Total Length: 5.00 ft Total Volume: 0.025 bbl

Num Fluid Samples: 0

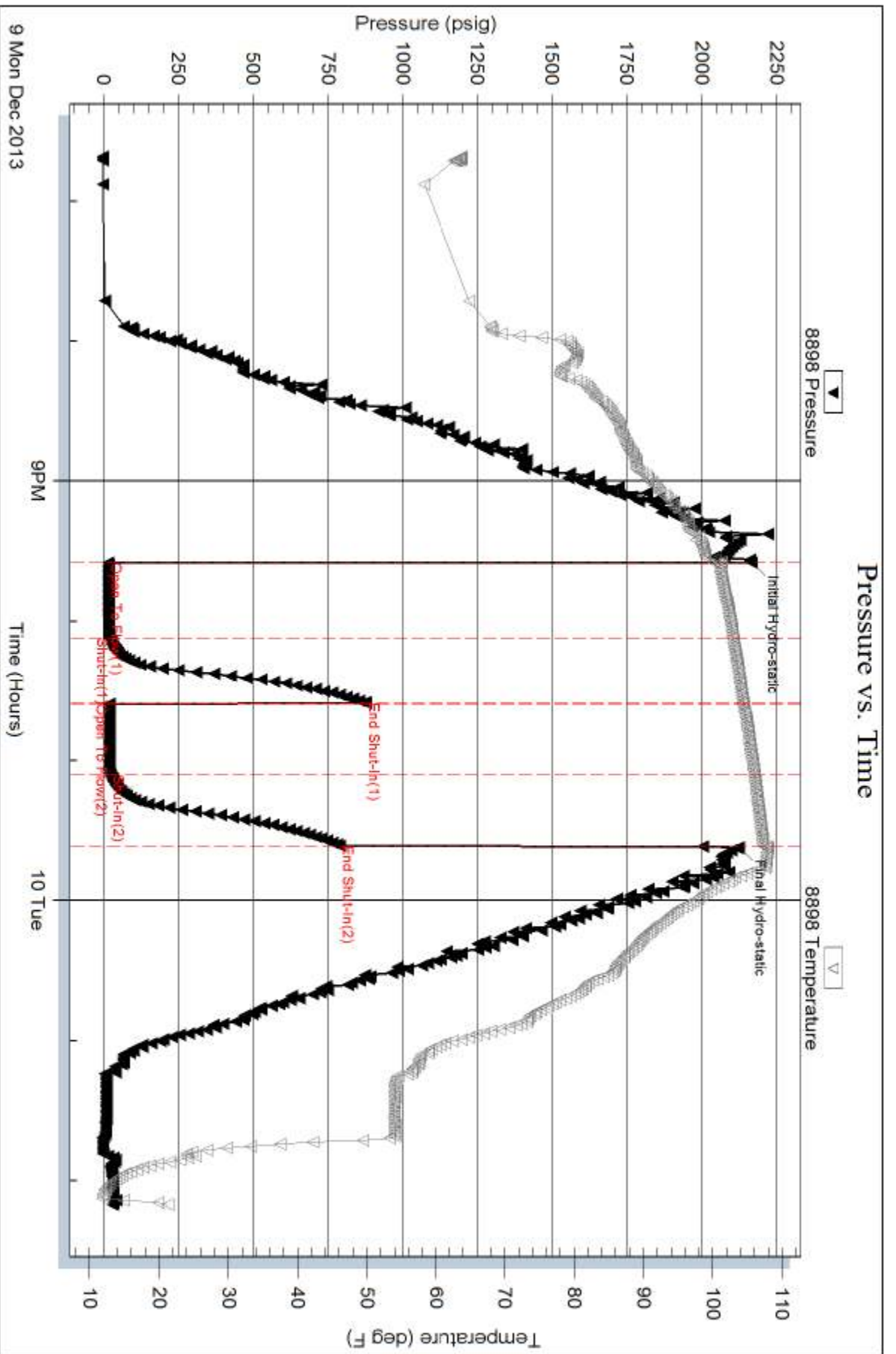
Num Gas Bombs: 0

Serial #:

Laboratory Name:

Laboratory Location:

Recovery Comments:



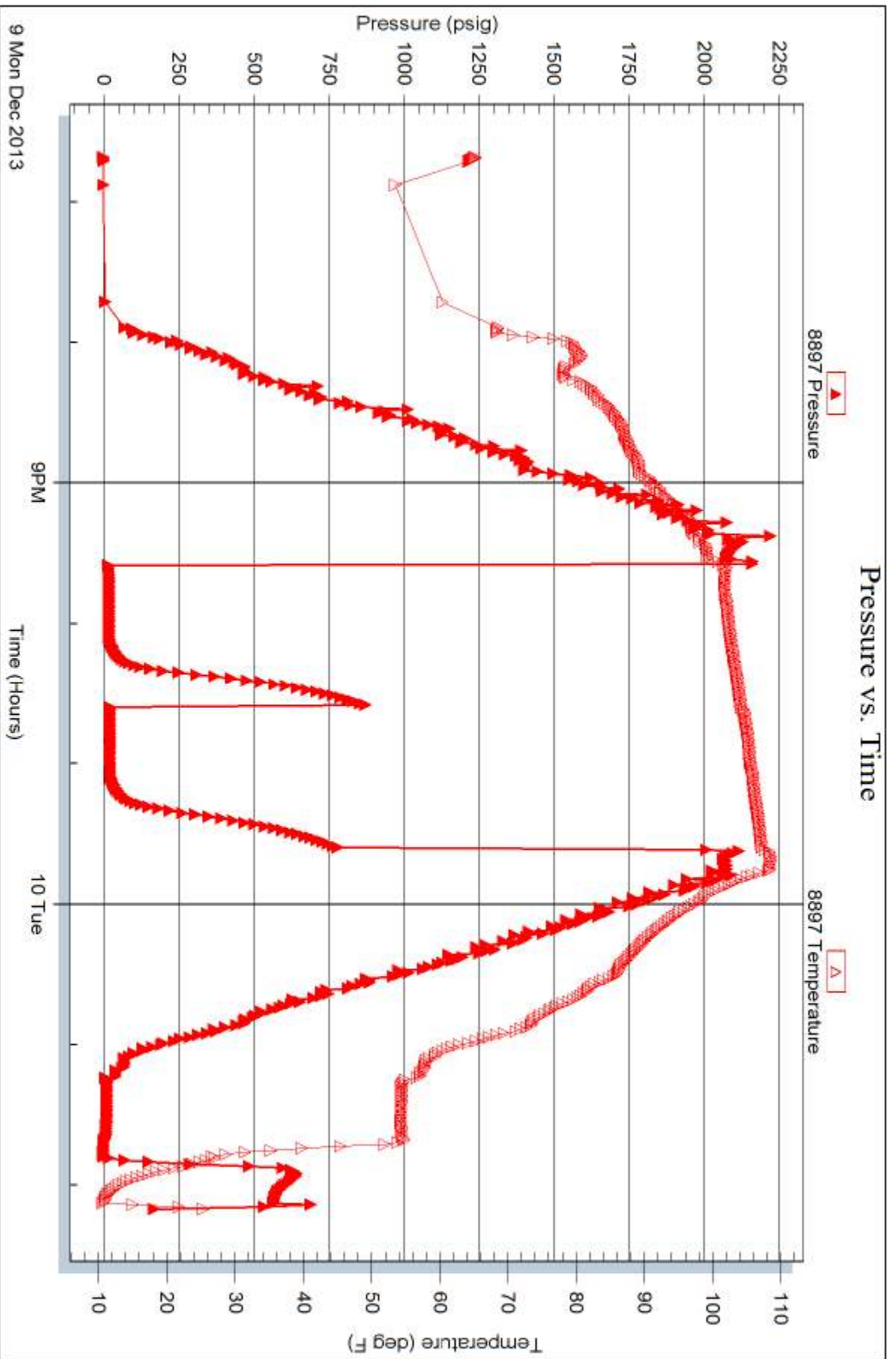
Serial #: 8897

Inside

American Warrior Inc

EHT #1-17

DST Test Number: 2



Tribble Testing, Inc

Ref. No: 55848

Printed: 2013.12.11 @ 15:26:27

Test Ticket

NO. 55847

Day • Hays, Kansas 67601

Test No. 1 Date 12-8-13/12-9
 Elevation 2203 KB 21917 GL
 Co. Rep / Geo. Jason Alm Rig Petromark #1
 Location: Sec. 17 Twp. 18 S Rge. 21 W Co. Wess State KS

Interval Tested 4207 4240 Zone Tested Char. "A" Sand
 Anchor Length 33 Drill Pipe Run 4069 Mud Wt. 9.4
 Top Packer Depth 4203 Drill Collars Run 117 Vis 59
 Bottom Packer Depth 4207 Wt. Pipe Run 0 WL 7.2
 Total Depth 4240 Chlorides 42000 ppm System LCM 0

Blow Description B.O.B. IN 1 min
Strong surface blow to 7 in
B.O.B. IN 1 min
Pull it

Rec	Feet of	%gas	%oil	%water	%mud
<u>10</u>	<u>60</u>	<u>50</u>	<u>50</u>		
<u>496</u>	<u>60</u>	<u>25</u>	<u>75</u>		
<u>62</u>	<u>60 CM</u>	<u>16</u>	<u>40</u>		<u>50</u>
<u>117</u>	<u>60 CM</u>	<u>5</u>	<u>25</u>		<u>75</u>
<u>0</u>	<u>670 GIP</u>	<u>100</u>			

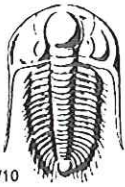
Rec Total 685 BHT 115 Gravity 36 API RW @ _____ °F Chlorides _____ ppm

(A) Initial Hydrostatic 210 Test 1250 T-On Location 23140
 (B) First Initial Flow 129 Jars 250 T-Started 01120
 (C) First Final Flow 165 Safety Joint 75 T-Open 04112
 (D) Initial Shut-In 1186 Circ Sub _____ T-Pulled 04132
 (E) Second Initial Flow 219 Hourly Standby _____ T-Out 07145
 (F) Second Final Flow 254 Mileage 110 R/T 170.50 Comments _____
 (G) Final Shut-In N/A Sampler _____
 (H) Final Hydrostatic 2060 Straddle _____
 Shale Packer _____
 Ruined Shale Packer _____
 Ruined Packer _____
 Extra Packer _____
 Extra Copies _____

Initial Open 5
 Initial Shut-In 10
 Final Flow 5
 Final Shut-In pull it
 Sub Total 0
 Total 1745.50
 MP/DST Disc't _____

Approved By _____ Our Representative [Signature]

Trilobite Testing Inc. shall not be liable for damaged of any kind of the property or personnel of the one for whom a test is made, or for any loss suffered or sustained, directly or indirectly, through the use of its equipment, or its statements or opinion concerning the results of any test, tools lost or damaged in the hole shall be paid for at cost by the party for whom the test is made.



TRILOBITE TESTING INC.

1515 Commerce Parkway • Hays, Kansas 67601

Test Ticket

NO. 55848

Well Name & No. FHT # 1-17 Test No. 2 Date 12-9-13
 Company American Warrior Inc Elevation 2203 KB 2197 GL
 Address 3118 Cummings Rd Garden City 67846
 Co. Rep / Geo. Jason Alm Rig Petromark #1
 Location: Sec. 17 Twp. 18S Rge. 2W Co. Ness State KS

Interval Tested 4294 4308 Zone Tested Miss.
 Anchor Length 14 Drill Pipe Run 4160 Mud Wt. 9.2
 Top Packer Depth 4290 Drill Collars Run 117 Vis 51
 Bottom Packer Depth 4294 Wt. Pipe Run 0 WL 8.8
 Total Depth 4308 Chlorides 6700 ppm System LCM 0

Blow Description Weak surface blow built to 2in
Deal w/ blow back
Weak surface blow built to 1/4in
Deal w/ blow back

Rec	Feet of	%gas	%oil	%water	%mud
Rec	Feet of	%gas	%oil	%water	%mud
Rec <u>5</u>	Feet of <u>Mud w/oil spots</u>	%gas	%oil	%water	%mud
Rec	Feet of	%gas	%oil	%water	%mud
Rec	Feet of	%gas	%oil	%water	%mud

Rec Total 5 BHT 107 Gravity _____ API RW _____ @ _____ °F Chlorides _____ ppm

(A) Initial Hydrostatic <u>2168</u>	<input checked="" type="checkbox"/> Test <u>1250</u>	T-On Location <u>17:35</u>
(B) First Initial Flow <u>17</u>	<input checked="" type="checkbox"/> Jars <u>250</u>	T-Started <u>18:40</u>
(C) First Final Flow <u>22</u>	<input checked="" type="checkbox"/> Safety Joint <u>75</u>	T-Open <u>21:35</u>
(D) Initial Shut-In <u>87</u>	<input type="checkbox"/> Circ Sub _____	T-Pulled <u>23:38</u>
(E) Second Initial Flow <u>21</u>	<input type="checkbox"/> Hourly Standby _____	T-Out <u>02:10</u>
(F) Second Final Flow <u>25</u>	<input checked="" type="checkbox"/> Mileage <u>170.50</u> <u>110 R/H</u>	Comments <u>989d</u>
(G) Final Shut-In <u>789</u>	<input type="checkbox"/> Sampler _____	<u>AP to test</u>
(H) Final Hydrostatic <u>2125</u>	<input type="checkbox"/> Straddle _____	<input type="checkbox"/> Ruined Shale Packer _____

Initial Open 30
 Initial Shut-In 30
 Final Flow 30
 Final Shut-In 30

Shale Packer _____
 Extra Packer _____
 Extra Recorder _____
 Day Standby _____
 Accessibility _____

Sub Total 1745.50

Sub Total 1745.50

MP/DST Disc't _____

Approved By _____ Our Representative [Signature]

Trilobite Testing Inc. shall not be liable for damaged of any kind of the property or personnel of the one for whom a test is made, or for any loss suffered or sustained, directly or indirectly, through the use of its equipment, or its statements or opinion concerning the results of any test, tools lost or damaged in the hole shall be paid for at cost by the party for whom the test is made.